

Industrial LED Lighting

PATLITE®



Aluminum LED Light Bars (CWK, CLK series)

These rust-free aluminum body light bars are designed to be bracket mounted. LED module lenses are clear and provide bright daylight white light. The super slim design is ideal for tight spaces. Up to IP69K options available.



Polycarbonate LED Light Bars (CLA, CWF series)

These lightweight polycarbonate LED light bars are designed to be bracket mounted. LED module lenses are clear and provide bright daylight white light. The super slim and lightweight design is ideal for tight spaces. Up to IP69K options available.



LED Signal Tower (HSST series)

An all-in-one package for controlling LR5 signal lights. Available red, amber, and green lights with clear lenses. Designed for indoor, upright installation. IP54 rated.

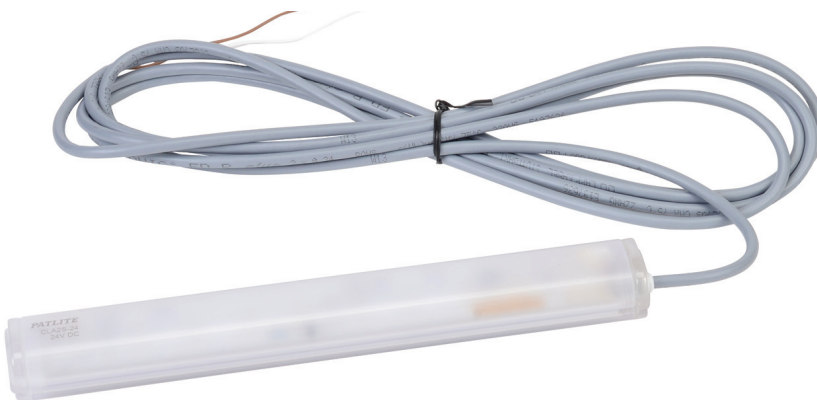
Accessories



PATLITE® CLA Series LED Light Bars

Features

- Bright, long-lasting LEDs
- Daylight color, up to 650lx illuminance
- Meets IP66/67/69K standards
- Works in temperatures from -40°C to +60°C [-40°F to +140°F]
- Suitable for food, beverage, and pharmaceutical applications
- Three lengths available – 200, 300, and 600mm [7.9, 11.8, and 23.6 inches]
- Constructed of shock-resistant polycarbonate resin



CLA2S-24-CD-30

CLA Series Light Bars						
Part Number	Price	Description	Light Color	Body Material	Light Length (mm [in])	Cable Length
CLA2S-24-CD-30		LED light bar, bracket mount, pigtail connector. Mounting bracket included.	Daylight white	Polycarbonate	200 [7.9]	3m [9.8 ft]
CLA3S-24-CD-30					300 [11.8]	
CLA6S-24-CD-30					600 [23.6]	

CLA Series Accessories		
Part Number	Price	Description
SZ-310AR		Replacement rear bracket (polycarbonate) for CLA series light bars
SZ-310ARM		Magnetic rear bracket (polycarbonate) for CLA series light bars
SZ-310ASB		Side bracket for CLA series light bars



SZ-310AR



SZ-310ARM



SZ-310ASB

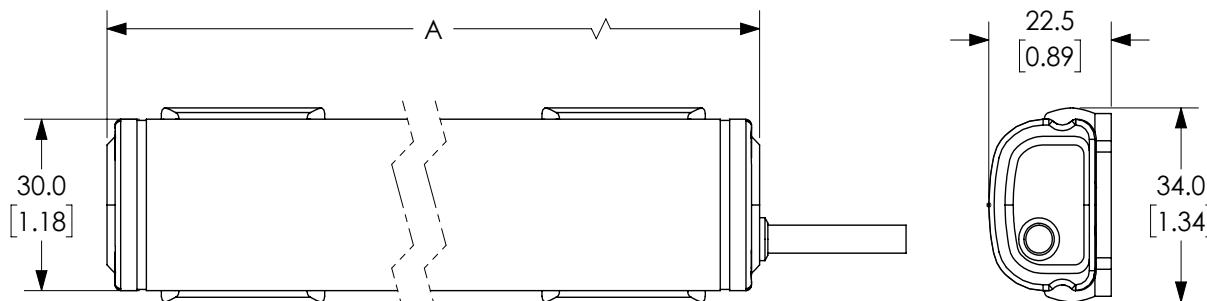
PATLITE® CLA Series LED Light Bars

Specifications

CLA Series Light Bars Technical Specifications				
Model		CLA2S-24-CD-30	CLA3S-24-CD-30	CLA6S-24-CD-30
Luminous Color		Daylight white		
Color Temperature		6800K		
Illuminance (@24VDC)	0.5 m	270lx	400lx	650lx
	1.0 m	70lx	105lx	200lx
Luminous Flux		125lm	360lm	690lm
Rated Voltage		24VDC (polarized)		
Operating Voltage Range		24VDC \pm 10%		
Rated Current Consumption		208mA \pm 10%	240mA \pm 10%	480mA \pm 10%
Rated Power Consumption		5.0 W	5.7 W	11.6 W
Operating Ambient Temperature		-40°C to +60°C [-40°F to +140°F]		
Operating Ambient Humidity		Less than 90% (no condensation)		
Mounting Location		Indoors		
Mounting Direction		All directions		
Protection Rating		IP66/67 (IEC 60529) / 69K (DIN 40050 part 9) (except cable terminal)		
Insulation Resistance		More than 5M Ω at 500VDC between the terminals and the chassis		
Withstanding Voltage		500VAC applied for 1 minute between terminals and chassis without breaking insulation		
Vibration Resistance		19.6 m/s ² (30Hz, back and forth: 2h, right to left: 2h, up and down: 2h)		
Weight		130g [4.6 oz] \pm 10%	180g [6.3 oz] \pm 10%	340g [12.0 oz] \pm 10%
Agency Approvals		UL 2108, CSA-C22.2 No. 250.0 EMC Directive (EN 55011, EN 61000-6-2) RoHS Directive (EN 50581) Conforms to CE requirements UL Listed (E306141)		

To obtain the most current agency approval information, see the Agency Approval Checklist section on the specific part number's web page.

Dimensions mm [in]



Please see our website www.AutomationDirect.com for complete engineering drawings.

Dimensions	
Model	A
CLA2S-24-CD-30	224 [8.82]
CLA3S-24-CD-30	324 [12.76]
CLA6S-24-CD-30	624 [24.57]

PATLITE® CWK Series LED Light Bars

Features

- Unique lens design ensures optimal light distribution
- Daylight color, up to 1500lx illuminance
- Compact design with high resistance to debris and fluids
- Meets IP66/67 standards
- Designed to operate in temperatures from -10°C to +50°C [+14°F to +122°F]
- Three lengths available – 200, 300, and 600mm [7.9, 11.8, and 23.6 inches]
- Constructed of tempered glass and aluminum



CWK2S-24-CD

CWK Series Light Bars						
Part Number	Price	Description	Light Color	Body Material	Light Length (mm [in])	Cable Length
<u>CWK2S-24-CD</u>		LED light bar, bracket mount, pigtail connector. Mounting bracket included.	Daylight white	Aluminum	200 [7.9]	3m [9.8 ft]
<u>CWK3S-24-CD</u>					300 [11.8]	
<u>CWK6S-24-CD</u>					600 [23.6]	

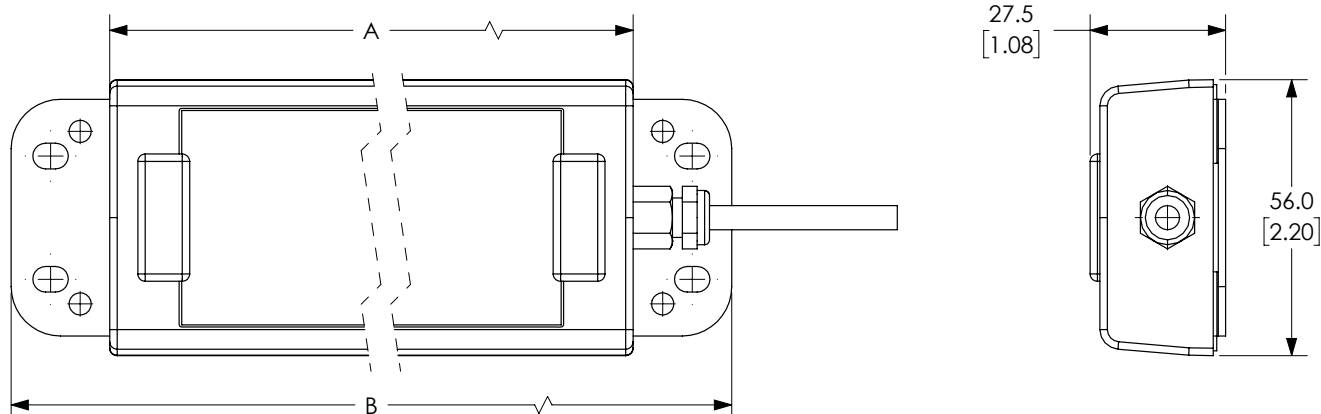
Specifications

CWK Series Light Bars Technical Specifications				
Model		CWK2S-24-CD	CWK3S-24-CD	CWK6S-24-CD
Luminous Color		Daylight white		
Color Temperature		6500K		
Illuminance (@24VDC)	1.0 m	600lx	850lx	1500lx
Luminous Flux		800lm	1200lm	2400lm
Rated Voltage		24VDC (polarized)		
Operating Voltage Range		24VDC ± 10%		
Rated Current Consumption		360mA ± 10%	480mA ± 10%	960mA ± 10%
Rated Power Consumption		8.64 W	11.52 W	23.04 W
Operating Ambient Temperature		-10°C to +50°C [+14°F to +122°F]		
Operating Ambient Humidity		Less than 90% (no condensation)		
Mounting Location		Indoors		
Mounting Direction		All directions		
Protection Rating		IP66/67 (JIS C0920)		
Insulation Resistance		More than 5MΩ at 500VDC		
Withstanding Voltage		500VAC applied for 1 minute between terminals and chassis		
Vibration Resistance		20.0 m/s ² (30Hz)		
Weight		600g [21.2 oz]	750g [26.5 oz]	1230g [43.4 oz]
Agency Approvals		Conforms to CE requirements: EN 55015, EN61000-6-2 RoHS Directive (2011/65/EU) UL Listed (E306141)		

To obtain the most current agency approval information, see the Agency Approval Checklist section on the specific part number's web page.

PATLITE® CWK Series LED Light Bars

Dimensions mm [in]



Please see our website www.AutomationDirect.com for complete engineering drawings.

Dimensions		
Model	A	B
CWK2S-24-CD	250 [9.84]	290 [11.41]
CWK3S-24-CD	350 [13.78]	390 [15.35]
CWK6S-24-CD	650 [25.59]	690 [27.17]

PATLITE® CLK Series LED Light Bars

Features

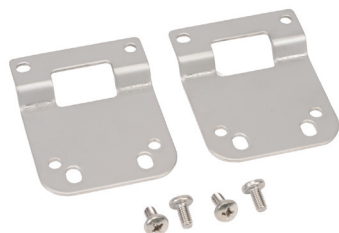
- Unique lens design ensures optimal light distribution
- Daylight color, up to 2100lx illuminance
- Meets IP66/67/69K standards
- Designed to operate in temperatures from -40°C to +60°C [-40°F to +140°F]
- Three lengths available – 200, 300, and 600mm [7.9, 11.8, and 23.6 inches]
- Can be daisy-chained using M12 connectors
- Constructed of tempered glass and aluminum



CLK3CL-24AG-CD

CLK Series Light Bars						
Part Number	Price	Description	Light Color	Body Material	Length (mm [in])	Cable Length
<u>CLK3C-24AG-CD</u>		LED light bar, bracket mount, 4-pin M12 quick-disconnect connector. Mounting bracket included.	Daylight white	Aluminum	300 [11.8]	n/a
<u>CLK6C-24AG-CD</u>					600 [23.6]	
<u>CLK3CL-24AG-CD</u>		LED light bar, bracket mount. 4-pin M12 female and 4-pin M12 male connectors. Mounting bracket included.			300 [11.8]	
<u>CLK6CL-24AG-CD</u>					600 [23.6]	

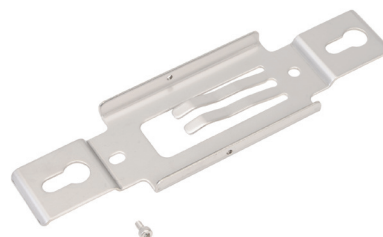
CLK Series Accessories		
Part Number	Price	Description
<u>CLK-001</u>		Replacement rear bracket (aluminum) for CLK series light bars.
<u>SZ-320KS</u>		Adjustable angle wall bracket (aluminum) for CLK series light bars.
<u>L85130002-F1</u>		Sliding bracket for CLK series light bars.



CLK-001



SZ-320KS



L85130002-F1

PATLITE® CLK Series LED Light Bars

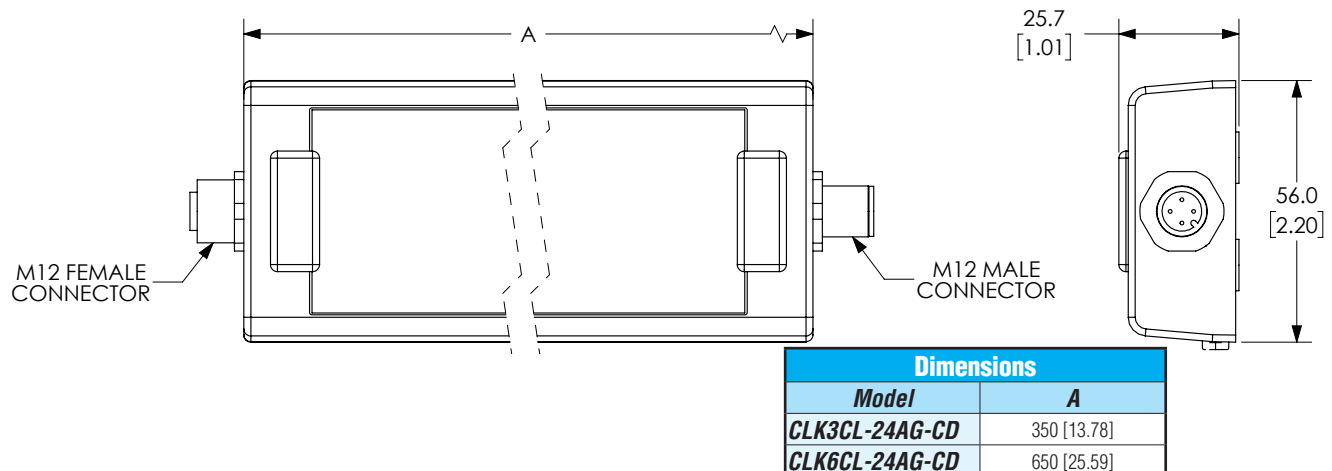
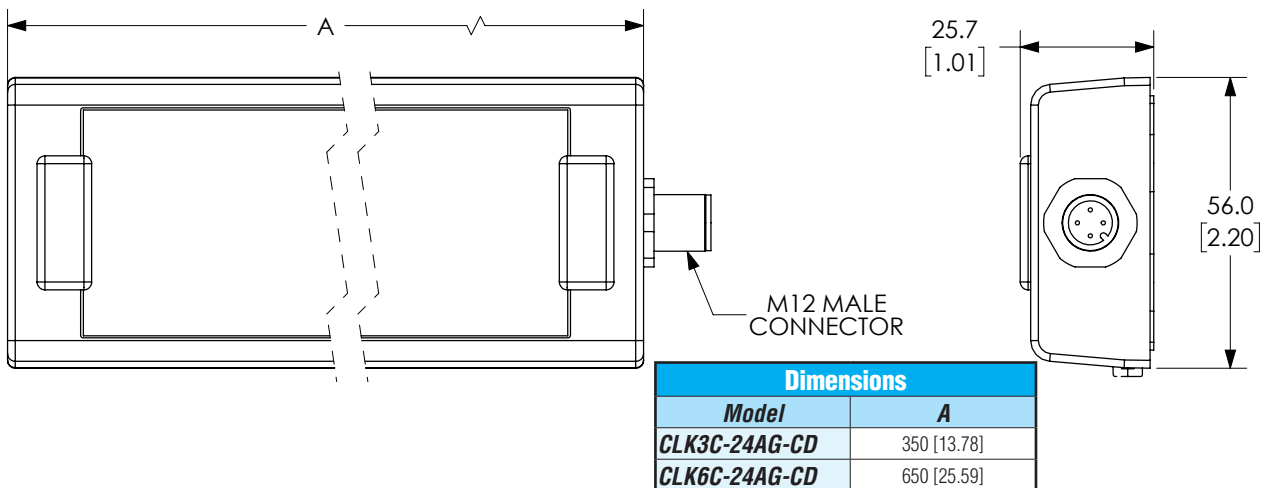
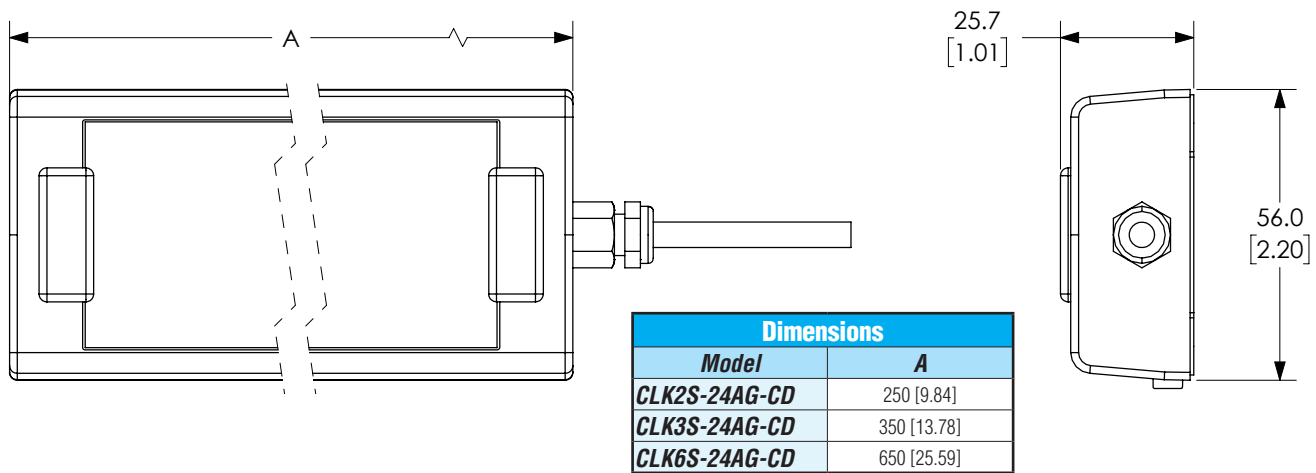
Specifications

CLK Series Light Bars Technical Specifications					
Model		CLK3C-24AG-CD	CLK6C-24AG-CD	CLK3CL-24AG-CD	CLK6CL-24AG-CD
Luminous Color		Daylight white			
Color Temperature		6500K			
Illuminance (@24VDC)	1.0 m	1200lx	2100lx	1200lx	2100lx
	2.0 m	300lx	580lx	300lx	580lx
Luminous Flux		1300lm	2600lm	1300lm	2600lm
Rated Voltage		24VDC (polarized)			
Operating Voltage Range		24VDC \pm 10%			
Rated Current Consumption		522mA \pm 10%	1044mA \pm 10%	522mA \pm 10%	1044mA \pm 10%
Rated Power Consumption		12.5 W	25W	12.5 W	25W
Operating Ambient Temperature		-40°C to +60°C [-40°F to +140°F]			
Operating Ambient Humidity		Less than 90% (no condensation)			
Mounting Location		Indoors			
Mounting Direction		All directions			
Protection Rating		IP66/67 (JIS C0920) / 69K (DIN 40050 part 9)			
Insulation Resistance		More than 5M Ω at 500VDC between terminals and chassis			
Withstanding Voltage		500VAC applied for 1 minute between terminals and chassis			
Vibration Resistance		19.6 m/s ² (JIS C 0911-1984)			
Weight (g [oz])		600 [21.2]	1070 [37.7]	600 [21.2]	1070 [37.7]
Agency Approvals		UL 2108, CSA-C22.2 No. 250.0 EMC Directive (EN 55015, EN 61000-6-2) RoHS Directive (EN 50581) Conforms to CE requirements UL Recognized (E306141)			

To obtain the most current agency approval information, see the Agency Approval Checklist section on the specific part number's web page.

PATLITE® CLK Series LED Light Bars

Dimensions mm [in]



Please see our website www.AutomationDirect.com for complete engineering drawings.

PATLITE® CWF Series LED Light Bars

Features

- Both AC and DC versions available
- Daylight color, up to 445lx illuminance
- Includes on/off switch for light control
- Meets IP20 standards
- AC versions designed to operate in temperatures from -20°C to +50°C [-4°F to +122°F]
- DC versions designed to operate in temperatures from -25°C to +60°C [-13°F to +140°F]
- Three lengths available – 300, 600, and 900mm [11.8, 23.6, and 35.4 inches]
- Constructed of polycarbonate and aluminum

**CWF3S-M2U-CD**

CWF Series Light Bars						
Part Number	Price	Description	Light Color	Body Material	Length (mm [in])	Cable Length
<u>CWF3S-M2U-CD</u>		LED light bar with on/off switch, bracket mount, pigtail connector, AC input. Mounting bracket included.	Daylight white	Polycarbonate/Aluminum	300 [11.8]	3m [9.8 ft]
<u>CWF6S-M2U-CD</u>					600 [23.6]	
<u>CWF9S-M2U-CD</u>					900 [35.4]	
<u>CWF3S-24-CD</u>		LED light bar with on/off switch, bracket mount, pigtail connector, DC input. Mounting bracket included.			300 [11.8]	
<u>CWF6S-24-CD</u>					600 [23.6]	

CWF Series Accessories		
Part Number	Price	Description
<u>CWF-001</u>		Swivel bracket (aluminum) for CWF series light bars
<u>CWF-002</u>		Magnet for CWF series light bars
<u>ZM0000028-F1</u>		Replacement rear bracket (nickel plated steel) for CWF series light bars

**CWF-001****CWF-002****ZM0000028-F1**

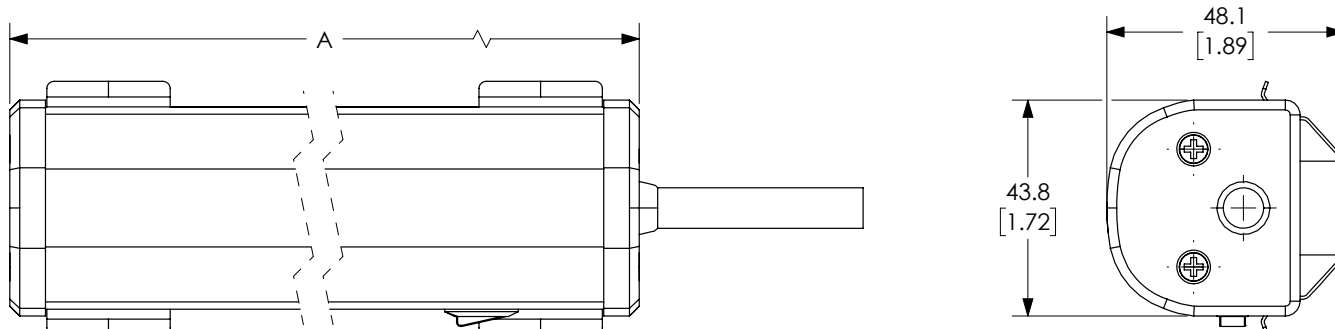
PATLITE® CWF Series LED Light Bars

Specifications

CWF Series Light Bars Technical Specifications						
Model		CWF3S-M2U-CD	CWF6S-M2U-CD	CWF9S-M2U-CD	CWF3S-24-CD	CWF6S-24-CD
Luminous Color		Daylight white				
Color Temperature		5700K				
Illuminance (@24VDC)	1.0 m	150lx	320lx	445lx	165lx	320lx
Luminous Flux		500lm	1000lm	1500lm	500lm	1000lm
Rated Voltage		100-240VAC (50/60Hz)			24VDC (polarized)	
Operating Voltage Range		100-240VAC ± 10%			24VDC ± 10%	
Rated Current Consumption		0.06 A	0.13 A	0.17 A	-	-
Rated Power Consumption		5W	10W	15W	5W	10W
Operating Ambient Temperature		-20°C to +50°C [-4°F to +122°F]			-25°C to +60°C [-13°F to +140°F]	
Operating Ambient Humidity		Less than 90% (no condensation)				
Mounting Location		Indoors				
Mounting Direction		All directions				
Protection Rating		IP20				
Insulation Resistance		More than 5MΩ at 500VDC between live part and non-current carrying metallic part				
Withstanding Voltage		1500VAC applied for 1 minute between live part and non-current carrying metallic part			500VAC applied for 1 minute between live part and non-current carrying metallic part	
Weight (g [oz])		530 [18.7]	680 [24.0]	840 [29.6]	420 [14.8]	570 [20.1]
Agency Approvals		UL 1598, CSA C22.2 No. 250.0 FCC Part 15 Subpart B Class A			UL 1598, CSA C22.2 No. 250.0 EMC Directive (EN 61000-6-4, EN 6100-6-2) FCC Part 15 Subpart B Class A	

To obtain the most current agency approval information, see the Agency Approval Checklist section on the specific part number's web page.

Dimensions mm [in]



Please see our website www.AutomationDirect.com for complete engineering drawings.

Dimensions	
Model	A
CWF3S-M2U-CD	300 [11.81]
CWF6S-M2U-CD	600 [23.62]
CWF9S-M2U-CD	900 [35.43]
CWF3S-24-CD	300 [11.81]
CWF6S-24-CD	600 [23.62]

PATLITE® HSST Series Signal Towers

Features

- Low-cost kit for controlling LR5 signal tower manually
- Three-tier light with red, amber, and green light modules
- Includes 3-button switch box and power adapter
- Tower meets IP54 standards
- Designed to operate in temperatures from 0°C to +40°C [+32°F to +104°F]
- Tower is 219mm [8.6 in] long with 50mm [2.0 in] diameter lights

**LR5-E-RZ****HSST-3M2-RYG**

HSST Series Signal Towers							
Part Number	Price	Description	Light Color	Lens Color	Body Color	Light Tower Length	Diameter
HSST-3M2-RYG		Manual signal tower station kit, 3 tiers, permanent LED light function.	Red, Amber, Green	Clear	Off-white	219mm [8.6 inches]	50mm

HSST Series Accessories		
Part Number	Price	Description
LR5-E-RZ		50mm LED module, red with clear lens
LR5-E-YZ		50mm LED module, amber with clear lens
LR5-E-GZ		50mm LED module, green with clear lens
<u>B32310071-7F1</u>		Replacement head cover for HSST series
<u>T16000002-F1</u>		Replacement 3-button switch box for HSST series
<u>T13300128-F1</u>		Replacement power supply for HSST series

**B32310071-7F1****T16000002-F1****T13300128-F1**

PATLITE® HSST Series Signal Towers

Specifications

HSST Series Signal Towers Technical Specifications		
Model		HSST-3M2-RYG
Rated Voltage		AC adapter input: 100-240VAC (50/60Hz) Output: 24VDC
Operating Voltage Range		100-240VAC \pm 10%
Rated Power Consumption (Max)		4W
Operating Ambient Temperature		0°C to +40°C [+32°F to +104°F]
Operating Ambient Humidity		Less than 90% (no condensation)
Mounting Location		Indoors
Mounting Direction		Upright (recommended)
Protection Rating		Switch Box: IP20 Signal Tower: IP54
Insulation Resistance		More than 5M Ω at 500VDC between power input lead and chassis
Withstanding Voltage		1500VAC applied for 1 minute between live part and non-current carrying metallic part
Weight (g [oz])	Signal Tower (Short Pole)	360 [12.7]
	Signal Tower (Long Pole)	470 [16.6]
	Bracket	330 [11.6]
	Switch Box	70 [2.5]
	AC Adaptor	140 [4.9]
	Fitting Plate	50 [1.8]
Agency Approvals		RoHS Directive (EN 50581) FCC Part 15 Subpart B Class A UL 48, CSA C22.2 No. 207 UL Listed (File E310210)

To obtain the most current agency approval information, see the Agency Approval Checklist section on the specific part number's web page.

Dimensions mm [in]

