

PATLITE® Industrial LED Lighting



Aluminum LED Light Bars (CWK, CLK series)

These rust-free aluminum body light bars are designed to be bracket mounted. LED module lenses are clear and provide bright daylight white light. The super slim design is ideal for tight spaces. Up to IP69K options available.



Polycarbonate LED Light Bars (CLA, CWF series)

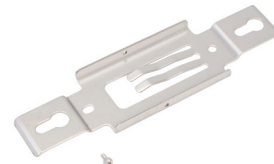
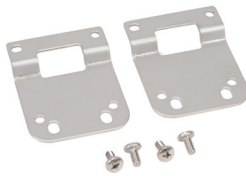
These lightweight polycarbonate LED light bars are designed to be bracket mounted. LED module lenses are clear and provide bright daylight white light. The super slim and lightweight design is ideal for tight spaces. Up to IP69K options available.



LED Signal Tower (HSST series)

An all-in-one package for controlling LR5 signal lights. Available red, amber, and green lights with clear lenses. Designed for indoor, upright installation. IP54 rated.

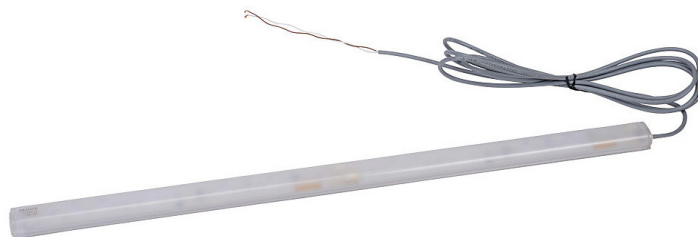
Accessories



PATLITE® CLA Series LED Light Bars

Features

- Bright, long-lasting LEDs
- Daylight color, up to 650lx illuminance
- Meets IP66/67/69K standards
- Works in temperatures from -40 to +60°C [-40 to +140°F]
- Suitable for food, beverage, and pharmaceutical applications
- Constructed of shock-resistant polycarbonate resin



CLA6S-24-CD-30

CLA Series Light Bars							
Part Number	Price	Drawing Link	Description	Light Color	Body Material	Light Length (mm [in])	Cable Length m [ft]
<u>CLA6S-24-CD-30</u>	Retired	PDF	LED light bar, bracket mount, pigtail connector. Mounting bracket included.	Daylight white	Polycarbonate	600 [23.6]	3 [9.8]

CLA Series Accessories			
Part Number	Price	Drawing Link	Description
<u>SZ-310AR</u>	Retired	PDF	Replacement rear bracket (polycarbonate) for CLA series light bars
<u>SZ-310ARM</u>	Retired	PDF	Magnetic rear bracket (polycarbonate) for CLA series light bars
<u>SZ-310ASB</u>	Retired	PDF	Side bracket for CLA series light bars



SZ-310AR



SZ-310ARM



SZ-310ASB

PATLITE® CLA Series LED Light Bars

Specifications

CLA Series Light Bars Technical Specifications		
Model		<u>CLA6S-24-CD-30</u>
Luminous Color		Daylight white
Color Temperature		6800K
Illuminance (@24VDC)	0.5 m	650lx
	1.0 m	200lx
Luminous Flux		690lm
Rated Voltage		24VDC (polarized)
Operating Voltage Range		24VDC \pm 10%
Rated Current Consumption		480mA \pm 10%
Rated Power Consumption		11.6 W
Operating Ambient Temperature		-40 to +60°C [-40 to +140°F]
Operating Ambient Humidity		Less than 90% (no condensation)
Mounting Location		Indoors
Mounting Direction		All directions
Protection Rating		IP66/67 (IEC 60529) / 69K (DIN 40050 part 9) (except cable terminal)
Insulation Resistance		More than 5M Ω at 500VDC between the terminals and the chassis
Withstanding Voltage		500VAC applied for 1 minute between terminals and chassis without breaking insulation
Vibration Resistance		19.6 m/s ² (30Hz, back and forth: 2h, right to left: 2h, up and down: 2h)
Weight		340g [12.0 oz] \pm 10%
Agency Approvals *		UL 2108, CSA-C22.2 No. 250.0 EMC Directive (EN 55011, EN 61000-6-2) RoHS Directive (EN 50581) Conforms to CE requirements UL Listed (E306141)

* To obtain the most current agency approval information, see the Agency Approval Checklist section on the specific part number's web page.

PATLITE® CWK Series LED Light Bars

Features

- Unique lens design ensures optimal light distribution
- Daylight color, up to 1500lx illuminance
- Compact design with high resistance to debris and fluids
- Meets IP66/67 standards
- Designed to operate in temperatures from -10 to +50°C [+14 to +122°F]
- Three lengths available – 200, 300, and 600mm [7.9, 11.8, and 23.6 inches]
- Constructed of tempered glass and aluminum



CWK2S-24-CD

CWK Series Light Bars							
Part Number	Price	Drawing Link	Description	Light Color	Body Material	Light Length (mm [in])	Cable Length m [ft]
CWK2S-24-CD	<---->	PDF	LED light bar, bracket mount, pigtail connector. Mounting bracket included.	Daylight white	Aluminum	200 [7.9]	3 [9.8]
CWK3S-24-CD	<---->	PDF				300 [11.8]	
CWK6S-24-CD	<---->	PDF				600 [23.6]	

Specifications

CWK Series Light Bars Technical Specifications				
Part Number	CWK2S-24-CD		CWK3S-24-CD	CWK6S-24-CD
Luminous Color	Daylight white			
Color Temperature	6500K			
Illuminance (@24VDC)	1.0 m	600lx	850lx	1500lx
Luminous Flux		800lm	1200lm	2400lm
Rated Voltage	24VDC (polarized)			
Operating Voltage Range	24VDC ± 10%			
Rated Current Consumption		360mA ± 10%	480mA ± 10%	960mA ± 10%
Rated Power Consumption		8.64 W	11.52 W	23.04 W
Operating Ambient Temperature	-10°C to +50°C [+14°F to +122°F]			
Operating Ambient Humidity	Less than 90% (no condensation)			
Mounting Location	Indoors			
Mounting Direction	All directions			
Protection Rating	IP66/67 (JIS C0920)			
Insulation Resistance	More than 5MΩ at 500VDC			
Withstanding Voltage	500VAC applied for 1 minute between terminals and chassis			
Vibration Resistance	20.0 m/s ² (30Hz)			
Weight		600g [21.2 oz]	750g [26.5 oz]	1230g [43.4 oz]
Agency Approvals *	Conforms to CE requirements: EN 55015, EN61000-6-2 RoHS Directive (2011/65/EU) UL Listed (E306141)			

* To obtain the most current agency approval information, see the Agency Approval Checklist section on the specific part number's web page.

PATLITE® CLK Series LED Light Bars

Features

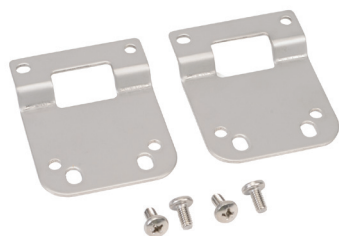
- Unique lens design ensures optimal light distribution
- Daylight color, up to 2100lx illuminance
- Meets IP66/67/69K standards
- Designed to operate in temperatures from -40 to +60°C [-40 to +140°F]
- Three lengths available – 200, 300, and 600mm [7.9, 11.8, and 23.6 inches]
- Can be daisy-chained using M12 connectors
- Constructed of tempered glass and aluminum



CLK3CL-24AG-CD

CLK Series Light Bars							
Part Number	Price	Drawing Link	Description	Light Color	Body Material	Length (mm [in])	Cable Length
CLK3C-24AG-CD	<----->	PDF	LED light bar, bracket mount, 4-pin M12 quick-disconnect connector. Mounting bracket included.	Daylight white	Aluminum	300 [11.8]	N/A
CLK6C-24AG-CD	<----->	PDF				600 [23.6]	
CLK3CL-24AG-CD	<----->	PDF	LED light bar, bracket mount. 4-pin M12 female and 4-pin M12 male connectors. Mounting bracket included.			300 [11.8]	
CLK6CL-24AG-CD	<----->	PDF				600 [23.6]	

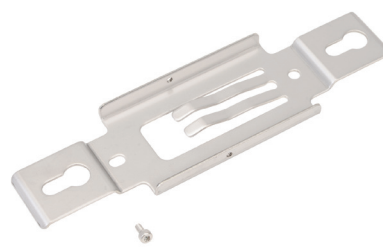
CLK Series Accessories			
Part Number	Price	Drawing Link	Description
<u>CLK-001</u>	<----->	<u>PDF</u>	Replacement rear bracket (aluminum) for CLK series light bars.
<u>SZ-320KS</u>	<----->	<u>PDF</u>	Adjustable angle wall bracket (aluminum) for CLK series light bars.
<u>L85130002-F1</u>	<----->	N/A	Sliding bracket for CLK series light bars.



CLK-001



SZ-320KS



L85130002-F1

PATLITE® CLK Series LED Light Bars

Specifications

CLK Series Light Bars Technical Specifications					
Part Number		CLK3C-24AG-CD	CLK6C-24AG-CD	CLK3CL-24AG-CD	CLK6CL-24AG-CD
Luminous Color		Daylight white			
Color Temperature		6500K			
Illuminance (@24VDC)	1.0 m	1200lx	2100lx	1200lx	2100lx
	2.0 m	300lx	580lx	300lx	580lx
Luminous Flux		1300lm	2600lm	1300lm	2600lm
Rated Voltage		24VDC (polarized)			
Operating Voltage Range		24VDC \pm 10%			
Rated Current Consumption		522mA \pm 10%	1044mA \pm 10%	522mA \pm 10%	1044mA \pm 10%
Rated Power Consumption		12.5 W	25W	12.5 W	25W
Operating Ambient Temperature		-40 to +60°C [-40 to +140°F]			
Operating Ambient Humidity		Less than 90% (no condensation)			
Mounting Location		Indoors			
Mounting Direction		All directions			
Protection Rating		IP66/67 (JIS C0920) / 69K (DIN 40050 part 9)			
Insulation Resistance		More than 5M Ω at 500VDC between terminals and chassis			
Withstanding Voltage		500VAC applied for 1 minute between terminals and chassis			
Vibration Resistance		19.6 m/s ² (JIS C 0911-1984)			
Weight (g [oz])		600 [21.2]	1070 [37.7]	600 [21.2]	1070 [37.7]
Agency Approvals *		UL 2108, CSA-C22.2 No. 250.0 EMC Directive (EN 55015, EN 61000-6-2) RoHS Directive (EN 50581) Conforms to CE requirements UL Recognized (E306141)			

* To obtain the most current agency approval information, see the Agency Approval Checklist section on the specific part number's web page.

PATLITE® CWF Series LED Light Bars

Features

- Both AC and DC versions available
- Daylight color, up to 445lx illuminance
- Includes on/off switch for light control
- Meets IP20 standards
- AC versions designed to operate in temperatures from -20 to +50°C [-4 to +122°F]
- DC versions designed to operate in temperatures from -25 to +60°C [-13 to +140°F]
- Three lengths available – 300, 600, and 900mm [11.8, 23.6, and 35.4 inches]
- Constructed of polycarbonate and aluminum



CWF3S-M2U-CD

CWF Series Light Bars							
Part Number	Price	Drawing Link	Description	Light Color	Body Material	Length (mm [in])	Cable Length m [ft]
CWF3S-M2U-CD	<----->	PDF	LED light bar with on/off switch, bracket mount, pigtail connector, AC input. Mounting bracket included.	Daylight white	Polycarbonate/ Aluminum	300 [11.8]	3 [9.8]
CWF6S-M2U-CD	<----->	PDF				600 [23.6]	
CWF9S-M2U-CD	<----->	PDF				900 [35.4]	
CWF3S-24-CD	<----->	PDF	LED light bar with on/off switch, bracket mount, pigtail connector, DC input. Mounting bracket included.			300 [11.8]	
CWF6S-24-CD	<----->	PDF				600 [23.6]	

CWF Series Accessories			
Part Number	Price	Drawing Link	Description
<u>CWF-001</u>	<----->	PDF	Swivel bracket (aluminum) for CWF series light bars
<u>CWF-002</u>	<----->	PDF	Magnet for CWF series light bars
<u>ZM0000028-F1</u>	<----->	N/A	Replacement rear bracket (nickel plated steel) for CWF series light bars



CWF-001



CWF-002



ZM0000028-F1

PATLITE® CWF Series LED Light Bars

Specifications

CWF Series Light Bars Technical Specifications						
Model		CWF3S-M2U-CD	CWF6S-M2U-CD	CWF9S-M2U-CD	CWF3S-24-CD	CWF6S-24-CD
Luminous Color		Daylight white				
Color Temperature		5700K				
Illuminance (@24VDC)	1.0 m	150lx	320lx	445lx	165lx	320lx
Luminous Flux		500lm	1000lm	1500lm	500lm	1000lm
Rated Voltage		100-240VAC (50/60Hz)			24VDC (polarized)	
Operating Voltage Range		100-240VAC ± 10%			24VDC ± 10%	
Rated Current Consumption		0.06 A	0.13 A	0.17 A	-	-
Rated Power Consumption		5W	10W	15W	5W	10W
Operating Ambient Temperature		-20°C to +50°C [-4°F to +122°F]			-25°C to +60°C [-13°F to +140°F]	
Operating Ambient Humidity		Less than 90% (no condensation)				
Mounting Location		Indoors				
Mounting Direction		All directions				
Protection Rating		IP20				
Insulation Resistance		More than 5MΩ at 500VDC between live part and non-current carrying metallic part				
Withstanding Voltage		1500VAC applied for 1 minute between live part and non-current carrying metallic part			500VAC applied for 1 minute between live part and non-current carrying metallic part	
Weight (g [oz])		530 [18.7]	680 [24.0]	840 [29.6]	420 [14.8]	570 [20.1]
Agency Approvals *		UL 1598, CSA C22.2 No. 250.0 FCC Part 15 Subpart B Class A			UL 1598, CSA C22.2 No. 250.0 EMC Directive (EN 61000-6-4, EN 6100-6-2) FCC Part 15 Subpart B Class A	

* To obtain the most current agency approval information, see the Agency Approval Checklist section on the specific part number's web page.

PATLITE® HSST Series Signal Towers

Features

- Low-cost kit for controlling LR5 signal tower manually
- Three-tier light with red, amber, and green light modules
- Includes 3-button switch box and power adapter
- Tower meets IP54 standards
- Designed to operate in temperatures from 0 to +40°C [+32 to +104°F]
- Tower is 219mm [8.6 in] long with 50mm [2.0 in] diameter lights



LR5-E-RZ



HSST-3M2-RYG

HSST Series Signal Towers								
Part Number	Price	Drawing Link	Description	Light Color	Lens Color	Body Color	Light Tower Length mm [in]	Diameter
<u>HSST-3M2-RYG</u>	<----->	PDF	Manual signal tower station kit, 3 tiers, permanent LED light function.	Red, Amber, Green	Clear	Off-white	219 [8.6]	50mm

HSST Series Accessories		
Part Number	Price	Description
<u>LR5-E-RZ</u>	<----->	Patlite LED light element, 50mm diameter, red, permanent or flashing (60 fpm +/- 3 fpm) light function, 24 VDC, clear lens. For use with HSST series manual signal tower station kit.
<u>LR5-E-YZ</u>	<----->	Patlite LED light element, 50mm diameter, yellow, permanent or flashing (60 fpm +/- 3 fpm) light function, 24 VDC, clear lens. For use with HSST series manual signal tower station kit.
<u>LR5-E-GZ</u>	<----->	Patlite LED light element, 50mm diameter, green, permanent or flashing (60 fpm +/- 3 fpm) light function, 24 VDC, clear lens. For use with HSST series manual signal tower station kit.
<u>B32310071-7F1</u>	<----->	Patlite head cover, replacement. For use with HSST series manual signal tower station kit.
<u>T16000002-F1</u>	<----->	Patlite 3-button switch box, replacement. For use with HSST series manual signal tower station kit.
<u>T13300128-F1</u>	<----->	Patlite power supply, replacement. For use with HSST series manual signal tower station kit.



B32310071-7F1



T16000002-F1



T13300128-F1

PATLITE® HSST Series Signal Towers

Specifications

HSST Series Signal Towers Technical Specifications		
Part Number		<u>HSST-3M2-RYG</u>
Rated Voltage		AC adapter input: 100-240VAC (50/60Hz) Output: 24VDC
Operating Voltage Range		100-240VAC \pm 10%
Rated Power Consumption (Max)		4W
Operating Ambient Temperature		0 to +40°C [+32 to +104°F]
Operating Ambient Humidity		Less than 90% (no condensation)
Mounting Location		Indoors
Mounting Direction		Upright (recommended)
Protection Rating		Switch Box: IP20 Signal Tower: IP54
Insulation Resistance		More than 5M Ω at 500VDC between power input lead and chassis
Withstanding Voltage		1500VAC applied for 1 minute between live part and non-current carrying metallic part
Weight (g [oz])	Signal Tower (Short Pole)	360 [12.7]
	Signal Tower (Long Pole)	470 [16.6]
	Bracket	330 [11.6]
	Switch Box	70 [2.5]
	AC Adapter	140 [4.9]
	Fitting Plate	50 [1.8]
Agency Approvals *		RoHS Directive (EN 50581) FCC Part 15 Subpart B Class A UL 48, CSA C22.2 No. 207 UL Listed (File E310210)

* To obtain the most current agency approval information, see the Agency Approval Checklist section on the specific part number's web page.