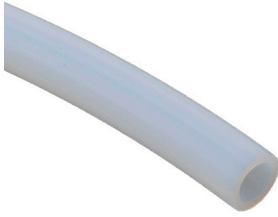




# PTFE Pneumatic Tubing



NITRA PTFE tubing is made from the highest quality, 100% virgin raw materials and has a hardness specification of Shore D 55. PTFE tubing is an excellent choice for many high heat applications. It has exceptional resistance to degradation

of mechanical properties under severe conditions. NITRA PTFE tubing does not support combustion and has very good dielectric properties. NITRA PTFE is ideal for use with NITRA stainless steelpush-to-connect fittings.

## Features

- Inch and metric sizes available
- Natural color
- 100 foot package sizes
- Shore D 55 hardness
- High working pressure and temperature/chemical resistance
- Made in USA

| PTFE 1/4 in. x 1/8 in. Tubing Specifications |              |                                      |                             |                          |  |
|--|--------------|--------------------------------------|-----------------------------|--------------------------|--|
| <i>Outside Diameter (in.)</i>                | 0.250        | <i>Working Pressure (psi) @ 70°F</i> | 372                         | <i>Temp. Range</i>       | -454°F to +500°F<br>(-270°C to +260°C) |
| <i>Inside Diameter (in.)</i>                 | 0.125        | <i>Burst Pressure (psi)</i>          | 1488                        | <i>Hardness</i>          | Shore D 55                             |
| <i>Wall Thickness (in.)</i>                  | 0.063        | <i>Vacuum Rating</i>                 | To 28" Hg                   | <i>Bend Radius (in.)</i> | 1.18                                   |
| 100 ft. Package Length                       |              |                                      |                             |                          |  |
| <i>Part Number</i>                           | <i>Price</i> | <i>Color</i>                         | <i>Package Weight (lbs)</i> |                          |  |
| <b><u>PT14-18NAT100</u></b>                  |              | Natural                              |                             |                          | 2.29                                   |

| PTFE 1/4 in. x 5/32 in. Tubing Specifications |              |                                      |                             |                          |  |
|---|--------------|--------------------------------------|-----------------------------|--------------------------|--|
| <i>Outside Diameter (in.)</i>                 | 0.250        | <i>Working Pressure (psi) @ 70°F</i> | 275                         | <i>Temp. Range</i>       | -454°F to +500°F<br>(-270°C to +260°C) |
| <i>Inside Diameter (in.)</i>                  | 0.156        | <i>Burst Pressure (psi)</i>          | 1100                        | <i>Hardness</i>          | Shore D 55                             |
| <i>Wall Thickness (in.)</i>                   | 0.047        | <i>Vacuum Rating</i>                 | To 28" Hg                   | <i>Bend Radius (in.)</i> | 1.97                                   |
| 100 ft. Package Length                        |              |                                      |                             |                          |  |
| <i>Part Number</i>                            | <i>Price</i> | <i>Color</i>                         | <i>Package Weight (lbs)</i> |                          |  |
| <b><u>PT14-532NAT100</u></b>                  |              | Natural                              |                             |                          | 2.02                                   |

| PTFE 1/4 in. x 3/16 in. Tubing Specifications |              |                                      |                             |                          |  |
|---|--------------|--------------------------------------|-----------------------------|--------------------------|--|
| <i>Outside Diameter (in.)</i>                 | 0.250        | <i>Working Pressure (psi) @ 70°F</i> | 174                         | <i>Temp. Range</i>       | -454°F to +500°F<br>(-270°C to +260°C) |
| <i>Inside Diameter (in.)</i>                  | 0.188        | <i>Burst Pressure (psi)</i>          | 696                         | <i>Hardness</i>          | Shore D 55                             |
| <i>Wall Thickness (in.)</i>                   | 0.031        | <i>Vacuum Rating</i>                 | To 28" Hg                   | <i>Bend Radius (in.)</i> | 2.56                                   |
| 100 ft. Package Length                        |              |                                      |                             |                          |  |
| <i>Part Number</i>                            | <i>Price</i> | <i>Color</i>                         | <i>Package Weight (lbs)</i> |                          |  |
| <b><u>PT14-316NAT100</u></b>                  |              | Natural                              |                             |                          | 1.75                                   |



# PTFE Pneumatic Tubing

| PTFE 3/8 in. x 1/4 in. Tubing Specifications |              |                                      |                             |                          |  |
|--|--------------|--------------------------------------|-----------------------------|--------------------------|--|
| <i>Outside Diameter (in.)</i>                | 0.375        | <i>Working Pressure (psi) @ 70°F</i> | 240                         | <i>Temp. Range</i>       | -454°F to +500°F<br>(-270°C to +260°C) |
| <i>Inside Diameter (in.)</i>                 | 0.250        | <i>Burst Pressure (psi)</i>          | 960                         | <i>Hardness</i>          | Shore D 55                             |
| <i>Wall Thickness (in.)</i>                  | 0.063        | <i>Vacuum Rating</i>                 | To 28" Hg                   | <i>Bend Radius (in.)</i> | 4.33                                   |
| 100 ft. Package Length                       |              |                                      |                             |                          |  |
| <i>Part Number</i>                           | <i>Price</i> | <i>Color</i>                         | <i>Package Weight (lbs)</i> |                          |  |
| <u>PT38NAT100</u>                            |              | Natural                              | 5.84                        |                          |  |

| PTFE 4 mm x 2.5 mm Tubing Specifications |              |                                      |                             |                         |  |
|--|--------------|--------------------------------------|-----------------------------|-------------------------|--|
| <i>Outside Diameter (mm)</i>             | 4.0          | <i>Working Pressure (psi) @ 70°F</i> | 292                         | <i>Temp. Range</i>      | -454°F to +500°F<br>(-270°C to +260°C) |
| <i>Inside Diameter (mm)</i>              | 2.5          | <i>Burst Pressure (psi)</i>          | 1168                        | <i>Hardness</i>         | Shore D 55                             |
| <i>Wall Thickness (mm)</i>               | 0.75         | <i>Vacuum Rating</i>                 | To 28" Hg                   | <i>Bend Radius (mm)</i> | 25.0                                   |
| 100 ft. Package Length                   |              |                                      |                             |                         |  |
| <i>Part Number</i>                       | <i>Price</i> | <i>Color</i>                         | <i>Package Weight (lbs)</i> |                         |  |
| <u>PT4MNAT100</u>                        |              | Natural                              | 1.51                        |                         |  |

| PTFE 6 mm x 4 mm Tubing Specifications |              |                                      |                             |                         |  |
|--|--------------|--------------------------------------|-----------------------------|-------------------------|--|
| <i>Outside Diameter (mm)</i>           | 6.0          | <i>Working Pressure (psi) @ 70°F</i> | 275                         | <i>Temp. Range</i>      | -454°F to +500°F<br>(-270°C to +260°C) |
| <i>Inside Diameter (mm)</i>            | 4.0          | <i>Burst Pressure (psi)</i>          | 1100                        | <i>Hardness</i>         | Shore D 55                             |
| <i>Wall Thickness (mm)</i>             | 1.0          | <i>Vacuum Rating</i>                 | To 28" Hg                   | <i>Bend Radius (mm)</i> | 40.0                                   |
| 100 ft. Package Length                 |              |                                      |                             |                         |  |
| <i>Part Number</i>                     | <i>Price</i> | <i>Color</i>                         | <i>Package Weight (lbs)</i> |                         |  |
| <u>PT6MNAT100</u>                      |              | Natural                              | 2.29                        |                         |  |



# PTFE Pneumatic Tubing

| PTFE 8 mm x 6 mm Tubing Specifications |              |                                      |                             |                         |  |
|--|--------------|--------------------------------------|-----------------------------|-------------------------|--|
| <b>Outside Diameter (mm)</b>           | 8.0          | <b>Working Pressure (psi) @ 70°F</b> | 138                         | <b>Temp. Range</b>      | -454°F to +500°F<br>(-270°C to +260°C) |
| <b>Inside Diameter (mm)</b>            | 6.0          | <b>Burst Pressure (psi)</b>          | 552                         | <b>Hardness</b>         | Shore D 70                             |
| <b>Wall Thickness (mm)</b>             | 1.0          | <b>Vacuum Rating</b>                 | To 28" Hg                   | <b>Bend Radius (mm)</b> | 60.0                                   |
| 100 ft. Package Length                 |              |                                      |                             |                         |  |
| <b>Part Number</b>                     | <b>Price</b> | <b>Color</b>                         | <b>Package Weight (lbs)</b> |                         |  |
| <b><u>PT8MNAT100</u></b>               |              | Natural                              | 3.20                        |                         |  |

| PTFE 10 mm x 8 mm Tubing Specifications |              |                                      |                             |                         |  |
|---|--------------|--------------------------------------|-----------------------------|-------------------------|--|
| <b>Outside Diameter (mm)</b>            | 10.0         | <b>Working Pressure (psi) @ 70°F</b> | 112                         | <b>Temp. Range</b>      | -454°F to +500°F<br>(-270°C to +260°C) |
| <b>Inside Diameter (mm)</b>             | 8.0          | <b>Burst Pressure (psi)</b>          | 448                         | <b>Hardness</b>         | Shore D 70                             |
| <b>Wall Thickness (mm)</b>              | 1.0          | <b>Vacuum Rating</b>                 | To 28" Hg                   | <b>Bend Radius (mm)</b> | 100.0                                  |
| 100 ft. Package Length                  |              |                                      |                             |                         |  |
| <b>Part Number</b>                      | <b>Price</b> | <b>Color</b>                         | <b>Package Weight (lbs)</b> |                         |  |
| <b><u>PT10MNAT100</u></b>               |              | Natural                              | 4.13                        |                         |  |

## NITRA Pneumatic Tubing Accessories

| Pneumatic Tubing Cutter |   |         |                      |       |
|-------------------------|---|---------|----------------------|-------|
| Part Number             | Description   | Pcs/Pkg | Package Weight (lbs) | Price |
| <b><u>TC-12</u></b>     | NITRA pneumatic tubing cutter for use with 1/8 to 1/2 inch and 4 to 12 mm outside diameter flexible plastic tubing. | 1       | 0.1                  |       |



**TC-12**