



SLV Series Pneumatic Lockout Valves Accessories

Features

- Silencers (mufflers) are aluminum construction
- High flow rates needed for safety lockout valves
- Pressure indicator pops out when pressure of 5 psi or more is present



HVM-34N



SLV-PU

Note: HVM series exhaust silencers have a maximum pressure of 250 psi (17 bar).

NITRA SLV Series Pneumatic Lockout Valve Accessories			
Part No.	Description	Price	Weight (lbs)
<u>HVM-18N</u>	NITRA pneumatic exhaust silencer, aluminum, cylindrical, Cv=2, 1/8 in male NPT		0.1
<u>HVM-34N-H</u>	NITRA pneumatic exhaust silencer, aluminum, cylindrical, Cv=13.5, 3/4 in male NPT		0.6
<u>HVM-1N</u>	NITRA pneumatic exhaust silencer, aluminum, cylindrical, Cv=16.7, 1 in male NPT		0.6
<u>HVM-114N</u>	NITRA pneumatic exhaust silencer, aluminum, cylindrical, Cv=17.4, 1-1/4 in male NPT		0.6
<u>SLV-PU</u>	NITRA pneumatic pop up pressure indicator, 5 psi, 1/8 in male NPT		0.1

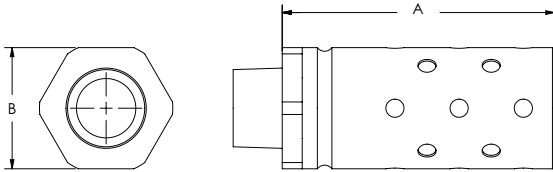


SLV Series Pneumatic Lockout Valves Accessories

Nitra High Volume Silencers (Mufflers)

Dimensions

inches [mm]

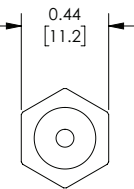
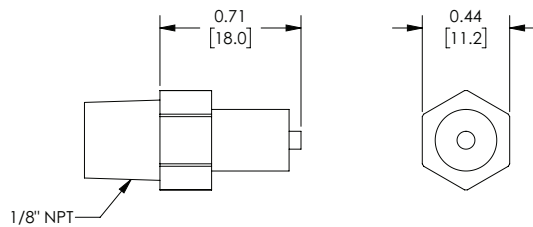


Muller Dimensions		
Part #	A	B
HVM-18N	1.6 [40.64]	0.8 [20.32]
HVM-34N	2.9 [73.66]	1.3 [33.02]
HVM-34N-H	4.5 [114.30]	2.0 [50.80]
HVM-1N	4.5 [114.30]	2.0 [50.80]
HVM-114N	4.5 [114.30]	2.0 [50.80]

Nitra Pop Up Pressure Indicator

Dimensions

inches [mm]



See our website www.AutomationDirect.com for complete Engineering drawings.