



Pneumatic Modular Air Pilot Valves – BVS Series

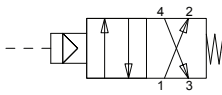
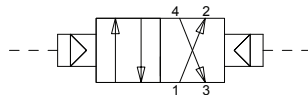
**BVS Single Air Pilot****BVS Double Air Pilot**

NITRA pneumatic BVS series modular piloted valves are body ported 4-port (4-way) valves. Models are single pilot, spring return or double pilot operated.

Features

- Body ported 4-port (4-way) spool valves
- 1/4" or 6mm push-to-connect inlet/outlet ports
- 5/32" (4mm) push-to-connect pilot ports
- Flow coefficient (Cv) 0.8
- 2-position
- 2-year warranty

Valve Symbols

**Diagram A****Diagram B**

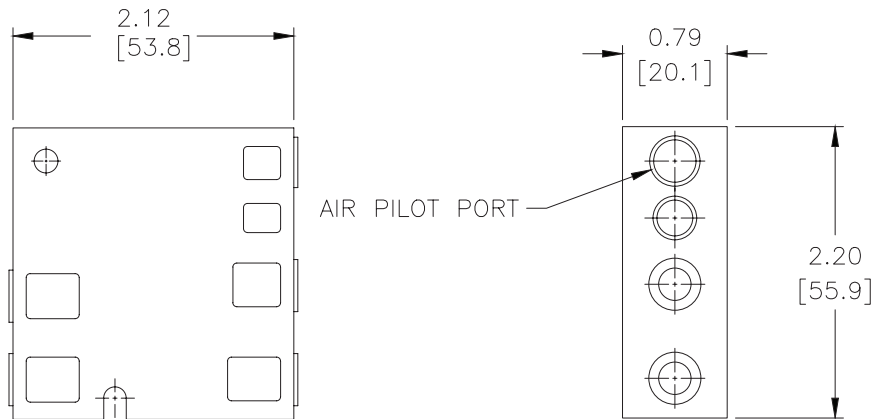
BVS 4-Way Air Pilot Specifications				
Models	<u>BVS-425-1P</u>	<u>BVS-46M-1P</u>	<u>BVS-425-2P</u>	<u>BVS-46M-2P</u>
Price				
Weight (lbs)	0.13			
Acting	Spool (2-Position), spring return		Spool (2-Position), double air pilot	
Diagram	A		B	
Port Size	(1) 1/4" inlet (2) 1/4" outlet (1) 1/4" exhaust (1) 5/32" (4mm) pilot	(1) 6mm inlet (2) 6mm outlet (1) 6mm exhaust (1) 5/32" (4mm) pilot	(1) 1/4" inlet (2) 1/4" outlet (1) 1/4" exhaust (2) 5/32" (4mm) pilot	(1) 6mm inlet (2) 6mm outlet (1) 6mm exhaust (2) 5/32" (4mm) pilot
Orifice Size	0.2" [5.0 mm] (Cv = 0.8)			
Fluid	Air or Inert Gas (to be filtered by 40μ filter element)			
Min. / Max. Pressure	30psi (2bar) - 120psi (8.3 bar)			
Vacuum	Air pilot models can be used in vacuum applications with external air signal to pilot ports.			
Body	Glass Reinforced Thermoplastic			
Expected Life	20,000,000 cycles at max 3 cycles/second			
Temperature - Operation and Storage	0~120°F (-18~49°C)			
Lubrication	Not Required			
Protection	IP 65			



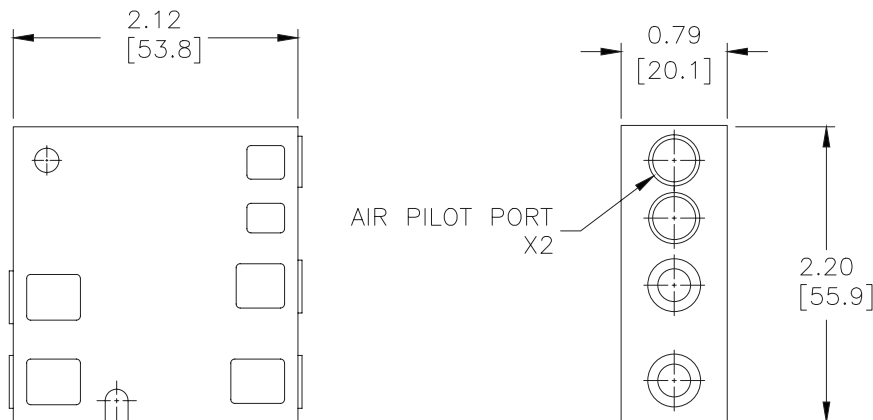
Pneumatic Modular Air Pilot Valves – BVS Series

Dimensions

inches [mm]



BVS Single Air Pilot



BVS Double Air Pilot

See our website www.AutomationDirect.com for
complete Engineering drawings.



Manifolds for Modular Solenoid Valves

– BVM-4 Series



BVM - 2-Station



BVM - 3-Station



BVM - 4-Station

NITRA pneumatic BVM-4 series modular manifolds simplify the mounting of BVS-4 series solenoid valves. Made of sturdy glass reinforced thermoplastic with DIN rail mounting clips included, they are available in 2, 3 and 4-station models. Push-to-connect inlet and outlet ports allow quick and easy tubing connections.

Features

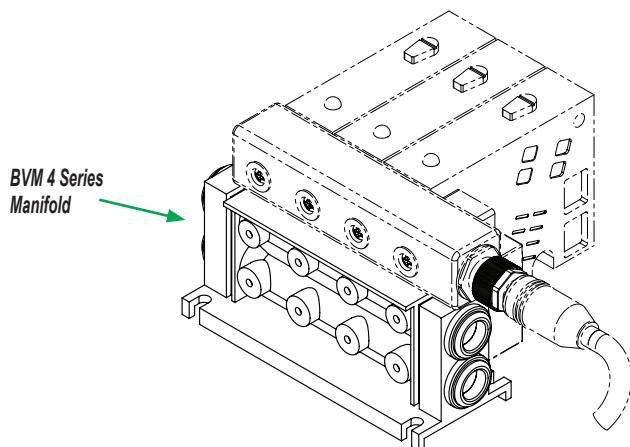
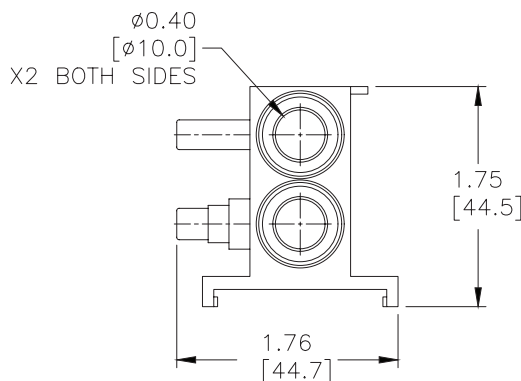
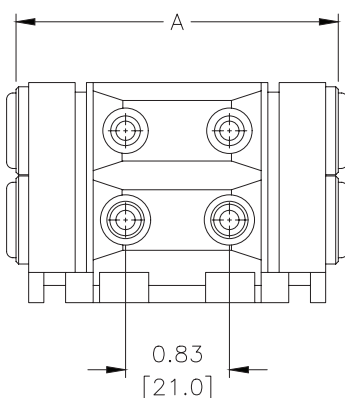
- No tools required to install/remove valves
- 2, 3 or 4-station manifolds available
- 3/8" or 10mm tube inlets and outlets
- 35 mm DIN rail mounting clips included
- 2-year warranty

BVM Series Manifolds						
Part No.	Stations	Inlet	Outlet	Dimension "A" in [mm]	Price	Weight (lbs)
BVM-4225	2	3/8"	3/8"	2.71 [68.9]		0.3
BVM-426M	2	10mm	10mm			0.3
BVM-4325	3	3/8"	3/8"	3.54 [89.9]		0.3
BVM-436M	3	10mm	10mm			0.3
BVM-4425	4	3/8"	3/8"	4.37 [110.9]		0.3
BVM-446M	4	10mm	10mm			0.3

Dimensions

inches [mm]

2-Station Manifold



See our website www.AutomationDirect.com for complete Engineering drawings.