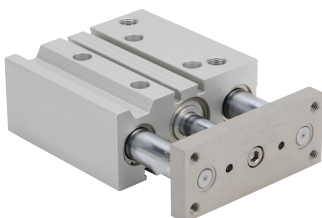




# E-Series Dual Guide Rod Cylinders

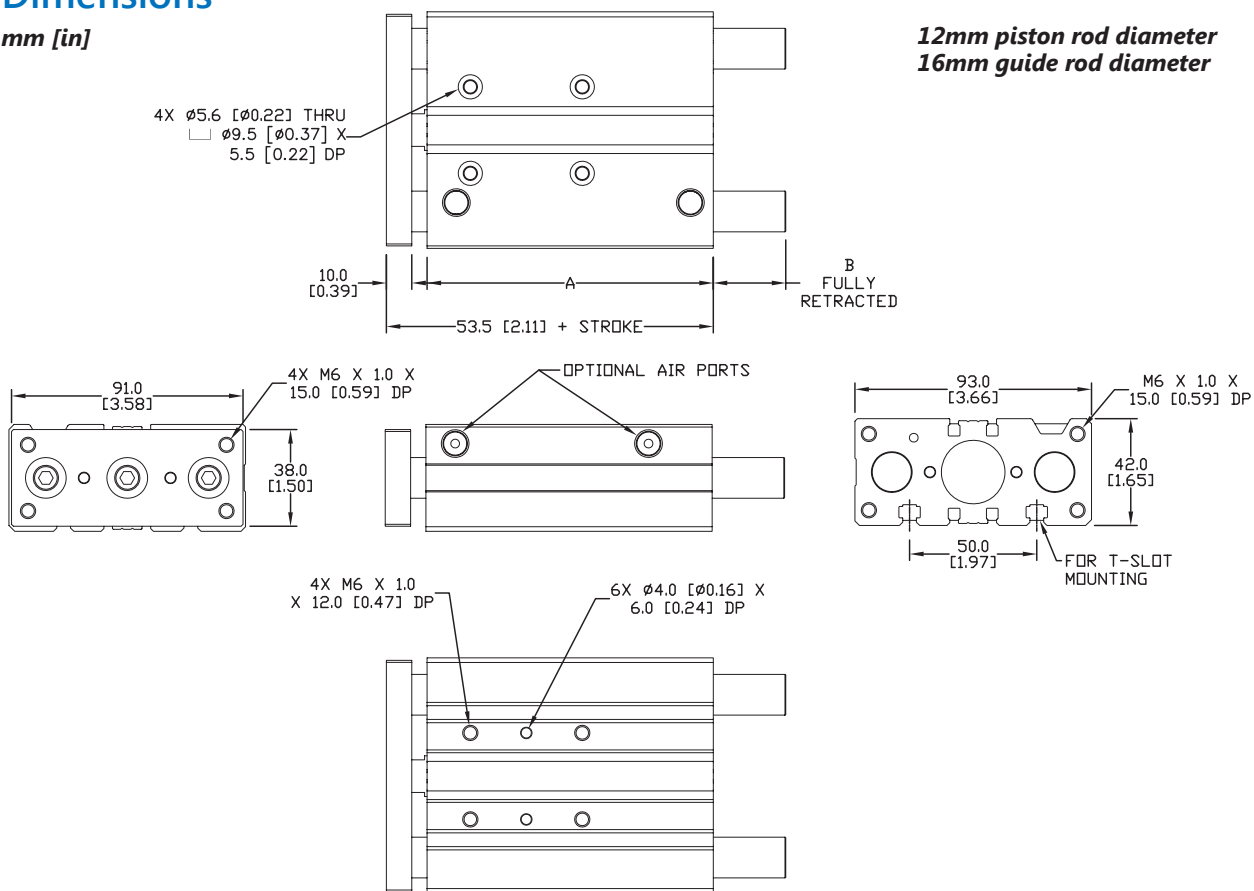
## 25mm Bore, Double Acting



25mm Bore E-Series Dual Guide Rod Cylinders - Double Acting					
Part Number	Stroke Length (mm)	"A" (mm [in])	"B" (mm [in])	Weight (lbs)	Price
<a href="#">E25M030MD-M</a>	30	67.5 [2.66]	-1.5 [-0.06]	2.4	
<a href="#">E25M040MD-M</a>	40	77.5 [3.05]	-1.5 [-0.06]	2.7	
<a href="#">E25M100MD-M</a>	100	137.5 [5.41]	28.5 [1.12]	4.5	
<a href="#">E25M125MD-M</a>	125	162.5 [6.40]	51.0 [2.01]	5.3	
<a href="#">E25M150MD-M</a>	150	187.5 [7.38]	51.0 [2.01]	5.8	
<a href="#">E25M175MD-M</a>	175	212.5 [8.37]	51.0 [2.01]	6.5	
<a href="#">E25M200MD-M</a>	200	237.5 [9.35]	51.0 [2.01]	7.1	

### Dimensions

mm [in]



E25MXXMD-M

See our website [www.AutomationDirect.com](http://www.AutomationDirect.com) for complete Engineering drawings.



# E-Series Dual Guide Rod Cylinders - Load and Torque Ratings

Cylinder Max Side Load Ratings (lbs)													
Bore Size (mm)	Stroke (mm)												
	10	20	25	30	40	50	75	100	125	150	175	200	250
12	9.9	7.4	6.5	5.9	9.2	8.1	5.9	5.0	4.3	3.8	-	-	-
16	15	11	9.5	8.3	14	13	8.3	7.2	6.1	5.4	5.0	4.5	-
20	-	18	14	13	28	25	20	17	15	13	12	11	9.5
25	-	21	20	17	32	29	23	19	20	18	16	15	12
32	-	-	46	43	40	37	41	35	32	29	26	24	20
40	-	-	46	43	40	37	41	35	32	29	26	24	20
50	-	-	67	64	60	55	61	54	49	44	40	37	32
63	-	-	67	64	60	55	61	54	49	44	40	37	32

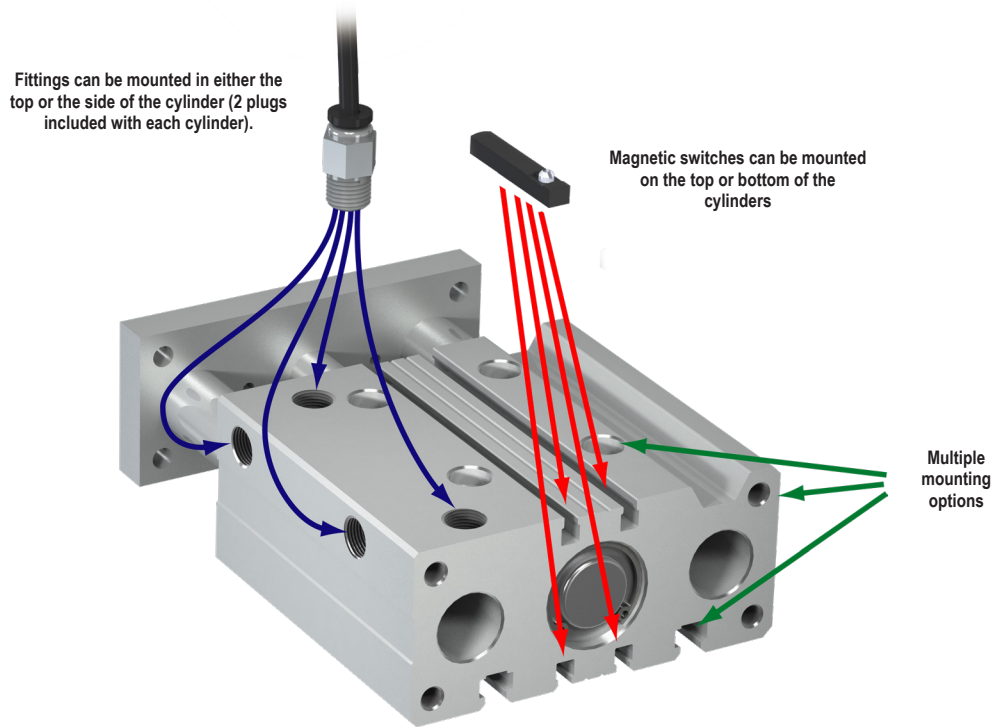
Conversion: 1 lb = 4.45 N

Cylinder Max Torque Ratings (in-lb)													
Bore Size (mm)	Stroke (mm)												
	10	20	25	30	40	50	75	100	125	150	175	200	250
12	7.97	6.99	6.28	5.75	6.82	6.37	4.43	3.19	2.74	2.39	-	-	-
16	10.7	9.20	8.32	7.79	10.89	9.82	6.11	5.13	4.43	3.89	3.54	3.19	-
20	-	13.9	12.6	11.6	21.2	19.0	16.6	14.4	12.7	11.3	10.3	9.38	7.97
25	-	21.2	19.6	17.8	32.4	29.7	26.2	22.7	20.0	17.9	16.2	14.8	12.6
32	-	-	56.2	53.1	50.7	45.4	50.4	44.0	39.1	35.2	32.0	29.3	25.1
40	-	-	62.0	58.4	54.1	50.1	55.5	48.5	43.1	38.8	35.2	32.3	27.7
50	-	-	115	112	97.4	95.6	106	93.8	84.1	76.1	69.6	64.1	55.2
63	-	-	130	120	114	107	119	105	94.7	85.8	78.4	72.2	62.3

Conversion: 1 in-lb = 0.113 N-m



# E-Series Dual Guide Rod Cylinders



NITRA pneumatic guided actuator with dual guide rods, bronze bushings, extruded aluminum housing and switch mounting tracks.

- Mild steel tooling plate
- Nitrile / Buna-N O-rings

- Eight bore sizes
- Interchangeable with other popular brands
- Work with 4 mm square T-slot cylinder switches
- Chrome plated stainless steel guide rods



E-Series Dual Guide Rod Cylinder Specifications								
Bore Size (mm)	12	16	20	25	32	40	50	63
Action	Double acting							
Fluid	Air (clean/dry)							
Temperature Range	23 to 158 °F (-5 to +70 °C)							
Pressure Range	18-142 psi (1.2-10 bar)							
Proof Pressure	213 psi (15 bar)							
Lubrication	Not required							
Cushion Type	Urethane Bumper							
Non-Rotate Tolerance	±0.10°		±0.09°		±0.08°		±0.06°	
Port Size	M5x0.8		1/8-NPT				1/4-NPT	
Extend Force @ 100 psi (lbs)	17.5	31.2	48.7	76.1	124.7	194.8	304.3	483.2
Retract Force @ 100 psi (lbs)	9.7	19.0	31.2	44.9	76.0	146.1	255.6	434.5



# CPS Series Cylinder Position Switches

Position Switch Cross Reference Chart			
NITRA Switch Type	Cylinder Brand (may fit some of these cylinders)	Photo Example	Groove Illustration
<b>CPS CPSF</b>	NITRA A-Series NITRA D-Series NITRA F-Series Metal Work ISO-6432		
<b>CPS9C</b>	DE-STA-CO Robohand SMC Compact Air Bimba Fabco		
<b>CPS9D</b>	NITRA L-Series Fabco Numatics Rotomation		
<b>CPS9E</b>	NITRA L-Series Fabco Numatics Rotomation		
<b>CPS9F</b>	NITRA G-Series Fabco Festo Numatics Rotomation Metal Work Dual Rod		
<b>CPS9H</b>	NITRA E-Series NITRA H-Series		
<b>CPS9M</b>	Norgren		
<b>CPS9Q</b>	NITRA L-Series NITRA G-Series Parker Fabco Festo Numatics Rotomation Metal Work Dual Rod		