



Pneumatic A-Series Direction Control Solenoid Valves - Accessories



AVC1-12D



AVC2-12D

Pneumatic A-Series Directional Control Solenoid Valve Series Accessories			
Part No.	Price	Description	Weight (lb)
<u>AVC1-12D</u>		NITRA solenoid coil, 12 VDC, 2.5 W. For use with AVS-31 and AVS-51 series valves.	0.1
<u>AVC1-24D</u>		NITRA solenoid coil, 24 VDC, 2.5 W. For use with AVS-31 and AVS-51 series valves.	0.1
<u>AVC1-24A</u>		NITRA solenoid coil, 24 VAC, 4.0 VA. For use with AVS-31 and AVS-51 series valves.	0.1
<u>AVC1-120A</u>		NITRA solenoid coil, 120 VAC, 3.5 VA. For use with AVS-31 and AVS-51 series valves.	0.1
<u>AVC2-12D</u>		NITRA solenoid coil, 12 VDC, 3W. For use with AVP-31, AVS-32, AVS-33, AVS-52, AVS-53, AVS-54 series valves and ASD series soft starters.	0.2
<u>AVC2-24D</u>		NITRA solenoid coil, 24 VDC, 3W. For use with AVP-31, AVS-32, AVS-33, AVS-52, AVS-53, AVS-54 series valves and ASD series soft starters.	0.2
<u>AVC2-24A</u>		NITRA solenoid coil, 24 VAC, 5 VA. For use with AVP-31, AVS-32, AVS-33, AVS-52, AVS-53, AVS-54 series valves and ASD series soft starters.	0.2
<u>AVC2-120A</u>		NITRA solenoid coil, 120 VAC, 4.5 VA. For use with AVP-31, AVS-32, AVS-33, AVS-52, AVS-53, AVS-54 series valves and ASD series soft starters.	0.2
<u>AVP-31BKT</u>		NITRA individual mounting bracket, plated steel. For use with AVP-31 directional control valves.	0.1
<u>AVP-31KIT</u>		NITRA stacking screws, for use with AVP-31 directional control valves. One kit is required for each additional AVP-31 valve added to the stack.	0.1

Dimensions

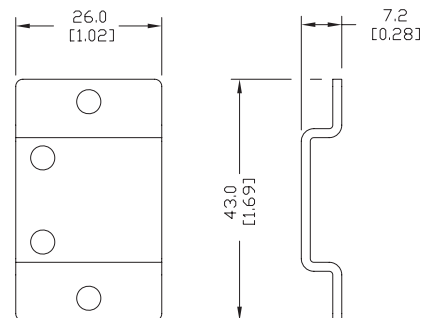
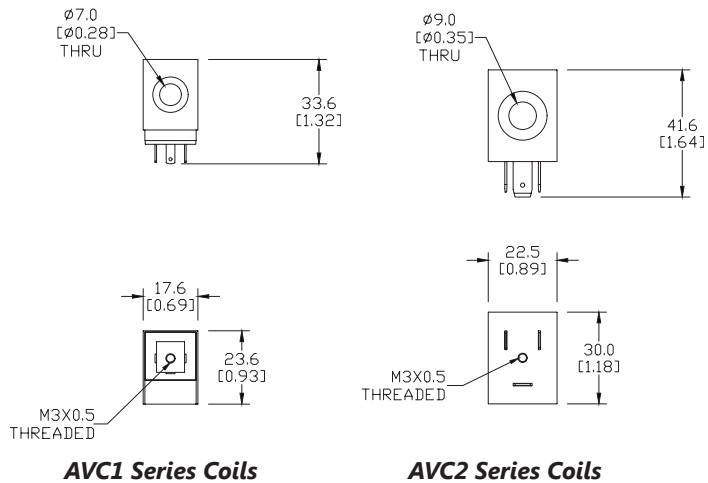
mm [inches]



AVP-31BKT



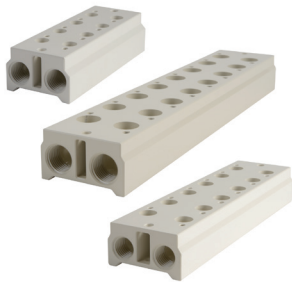
AVP-31KIT



See our website www.AutomationDirect.com for complete Engineering drawings.



Pneumatic Directional Control Solenoid Valve Manifolds and Accessories



AM-3 Series Manifolds



AM-31BP

Pneumatic Directional Control Solenoid Valve Series Accessories			
Part No.	Price	Description	Weight (lb)
<u>AM-312</u>		NITRA pneumatic valve manifold, aluminum, 2 stations, (2) 1/4 in FNPT inlet port(s), (2) 1/4 in FNPT exhaust port(s). For use with AVS-31 series.	0.2
<u>AM-314</u>		NITRA pneumatic valve manifold, aluminum, 4 stations, (2) 1/4 in FNPT inlet port(s), (2) 1/4 in FNPT exhaust port(s). For use with AVS-31 series.	0.3
<u>AM-316</u>		NITRA pneumatic valve manifold, aluminum, 6 stations, (2) 1/4 in FNPT inlet port(s), (2) 1/4 in FNPT exhaust port(s). For use with AVS-31 series.	0.4
<u>AM-318</u>		NITRA pneumatic valve manifold, aluminum, 8 stations, (2) 1/4 in FNPT inlet port(s), (2) 1/4 in FNPT exhaust port(s). For use with AVS-31 series.	0.5
<u>AM-31BP</u>		NITRA blanking plate, plated steel. For use with AM-31 series manifolds.	0.1
<u>AM-322</u>		NITRA pneumatic valve manifold, aluminum, 2 stations, (2) 1/4 in FNPT inlet port(s), (2) 1/4 in FNPT exhaust port(s). For use with AVS-32 series.	0.2
<u>AM-324</u>		NITRA pneumatic valve manifold, aluminum, 4 stations, (2) 1/4 in FNPT inlet port(s), (2) 1/4 in FNPT exhaust port(s). For use with AVS-32 series.	0.4
<u>AM-326</u>		NITRA pneumatic valve manifold, aluminum, 6 stations, (2) 1/4 in FNPT inlet port(s), (2) 1/4 in FNPT exhaust port(s). For use with AVS-32 series.	0.5
<u>AM-328</u>		NITRA pneumatic valve manifold, aluminum, 8 stations, (2) 1/4 in FNPT inlet port(s), (2) 1/4 in FNPT exhaust port(s). For use with AVS-32 series.	0.7
<u>AM-32BP</u>		NITRA blanking plate, plated steel. For use with AM-32 series manifolds.	0.1
<u>AM-332</u>		NITRA pneumatic valve manifold, aluminum, 2 stations, (2) 3/8 in FNPT inlet port(s), (2) 3/8 in FNPT exhaust port(s). For use with AVS-33 series.	0.4
<u>AM-334</u>		NITRA pneumatic valve manifold, aluminum, 4 stations, (2) 3/8 in FNPT inlet port(s), (2) 3/8 in FNPT exhaust port(s). For use with AVS-33 series.	0.6
<u>AM-336</u>		NITRA pneumatic valve manifold, aluminum, 6 stations, (2) 3/8 in FNPT inlet port(s), (2) 3/8 in FNPT exhaust port(s). For use with AVS-33 series.	0.9
<u>AM-338</u>		NITRA pneumatic valve manifold, aluminum, 8 stations, (2) 3/8 in FNPT inlet port(s), (2) 3/8 in FNPT exhaust port(s). For use with AVS-33 series.	1.1
<u>AM-33BP</u>		NITRA blanking plate, plated steel. For use with AM-33 series manifolds.	0.1
<u>AM-512</u>		NITRA pneumatic valve manifold, aluminum, 2 stations, (2) 1/4 in FNPT inlet port(s), (4) 1/4 in FNPT exhaust port(s). For use with AVS-51 series.	0.4
<u>AM-514</u>		NITRA pneumatic valve manifold, aluminum, 4 stations, (2) 1/4 in FNPT inlet port(s), (4) 1/4 in FNPT exhaust port(s). For use with AVS-51 series.	0.6
<u>AM-516</u>		NITRA pneumatic valve manifold, aluminum, 6 stations, (2) 1/4 in FNPT inlet port(s), (4) 1/4 in FNPT exhaust port(s). For use with AVS-51 series.	0.8
<u>AM-518</u>		NITRA pneumatic valve manifold, aluminum, 8 stations, (2) 1/4 in FNPT inlet port(s), (4) 1/4 in FNPT exhaust port(s). For use with AVS-51 series.	1.1
<u>AM-51BP</u>		NITRA blanking plate, plated steel. For use with AM-51 series manifolds.	0.1
<u>AM-522</u>		NITRA pneumatic valve manifold, aluminum, 2 stations, (2) 1/4 in FNPT inlet port(s), (4) 1/4 in FNPT exhaust port(s). For use with AVS-52 series.	0.5
<u>AM-524</u>		NITRA pneumatic valve manifold, aluminum, 4 stations, (2) 1/4 in FNPT inlet port(s), (4) 1/4 in FNPT exhaust port(s). For use with AVS-52 series.	0.9
<u>AM-526</u>		NITRA pneumatic valve manifold, aluminum, 6 stations, (2) 1/4 in FNPT inlet port(s), (4) 1/4 in FNPT exhaust port(s). For use with AVS-52 series.	1.2
<u>AM-528</u>		NITRA pneumatic valve manifold, aluminum, 8 stations, (2) 1/4 in FNPT inlet port(s), (4) 1/4 in FNPT exhaust port(s). For use with AVS-52 series.	1.5
<u>AM-52BP</u>		NITRA blanking plate, plated steel. For use with AM-52 series manifolds.	0.1



Pneumatic Directional Control Solenoid Valve Manifolds and Accessories



AM-5 Series Manifolds



AM-31GS

Pneumatic Directional Control Solenoid Valve Series Accessories Continued			
Part No.	Price	Description	Weight (lb)
<u>AM-532</u>		NITRA pneumatic valve manifold, aluminum, 2 stations, (2) 3/8 in FNPT inlet port(s), (4) 3/8 in FNPT exhaust port(s). For use with AVS-53 series.	0.8
<u>AM-534</u>		NITRA pneumatic valve manifold, aluminum, 4 stations, (2) 3/8 in FNPT inlet port(s), (4) 3/8 in FNPT exhaust port(s). For use with AVS-53 series.	1.4
<u>AM-536</u>		NITRA pneumatic valve manifold, aluminum, 6 stations, (2) 3/8 in FNPT inlet port(s), (4) 3/8 in FNPT exhaust port(s). For use with AVS-53 series.	1.9
<u>AM-538</u>		NITRA pneumatic valve manifold, aluminum, 8 stations, (2) 3/8 in FNPT inlet port(s), (4) 3/8 in FNPT exhaust port(s). For use with AVS-53 series.	2.5
<u>AM-53BP</u>		NITRA blanking plate, plated steel. For use with AM-53 series manifolds.	0.1
<u>AM-542</u>		NITRA pneumatic valve manifold, aluminum, 2 stations, (2) 1/2 in FNPT inlet port(s), (4) 1/2 in FNPT exhaust port(s). For use with AVS-54 series.	1.7
<u>AM-544</u>		NITRA pneumatic valve manifold, aluminum, 4 stations, (2) 1/2 in FNPT inlet port(s), (4) 1/2 in FNPT exhaust port(s). For use with AVS-54 series.	2.8
<u>AM-546</u>		NITRA pneumatic valve manifold, aluminum, 6 stations, (2) 1/2 in FNPT inlet port(s), (4) 1/2 in FNPT exhaust port(s). For use with AVS-54 series.	4.0
<u>AM-548</u>		NITRA pneumatic valve manifold, aluminum, 8 stations, (2) 1/2 in FNPT inlet port(s), (4) 1/2 in FNPT exhaust port(s). For use with AVS-54 series.	5.2
<u>AM-54BP</u>		NITRA blanking plate, plated steel. For use with AM-54 series manifolds.	0.1
<u>AM-31GS</u>		NITRA manifold mounting set, for use with AM-31 series manifolds.	0.1
<u>AM-32GS</u>		NITRA manifold mounting set, for use with AM-32 series manifolds.	0.1
<u>AM-33GS</u>		NITRA manifold mounting set, for use with AM-33 series manifolds.	0.1
<u>AM-51GS</u>		NITRA manifold mounting set, for use with AM-51 series manifolds.	0.1
<u>AM-52GS</u>		NITRA manifold mounting set, for use with AM-52 series manifolds.	0.1
<u>AM-53GS</u>		NITRA manifold mounting set, for use with AM-53 series manifolds.	0.1
<u>AM-54GS</u>		NITRA manifold mounting set, for use with AM-54 series manifolds.	0.1

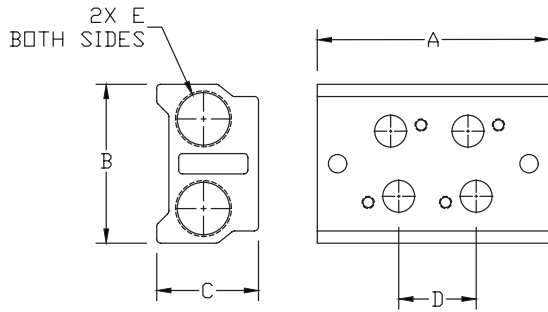


Pneumatic Directional Control Solenoid Valve Manifolds and Accessories

Dimensions

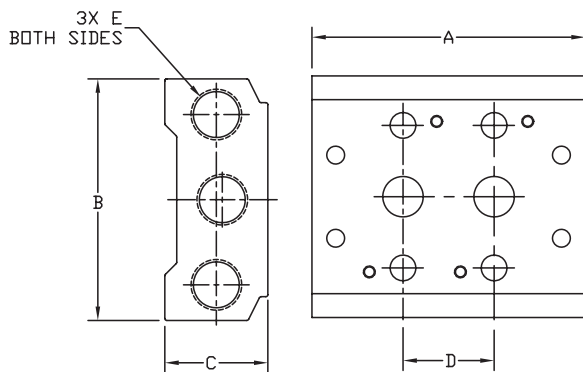
mm [inches]

AM 3x Series Manifolds



MANIFOLD DIMENSIONS					
PART NO.	A	B	C	D	E
AM-312	57.0 [2.24]	39.0 [1.54]	25.0 [0.98]	19.0 [0.75]	1/4 NPT
AM-314	95.0 [3.74]			3X 19.0 [0.75]	
AM-316	133.0 [5.24]			5X 19.0 [0.75]	
AM-318	171.0 [6.73]			7X 19.0 [0.75]	
AM-322	69.0 [2.72]	45.0 [1.77]	25.0 [0.98]	23.0 [0.91]	
AM-324	115.0 [4.53]			3X 23.0 [0.91]	
AM-326	161.0 [6.34]			5X 23.0 [0.91]	
AM-328	207.0 [8.15]			7X 23.0 [0.91]	
AM-332	82.0 [3.23]	52.0 [2.05]	29.0 [1.14]	28.0 [1.10]	3/8 NPT
AM-334	138.0 [5.46]			3X 28.0 [1.10]	
AM-336	194.0 [7.64]			5X 28.0 [1.10]	
AM-338	250.0 [9.84]			7X 28.0 [1.10]	

AM 5x Series Manifolds



MANIFOLD DIMENSIONS					
PART NO.	A	B	C	D	E
AM-512	57.0 [2.24]	58.0 [2.28]	25.0 [0.98]	19.0 [0.75]*	1/4 NPT
AM-514	95.0 [3.74]			3X 19.0 [0.75]*	
AM-516	133.0 [5.24]			5X 19.0 [0.75]*	
AM-518	171.0 [6.73]			7X 19.0 [0.75]*	
AM-522	69.0 [2.72]	61.0 [2.40]	26.0 [1.02]	23.0 [0.91]	
AM-524	115.0 [4.53]			3X 23.0 [0.91]	
AM-526	161.0 [6.34]			5X 23.0 [0.91]	
AM-528	207.0 [8.15]			7X 23.0 [0.91]	
AM-532	82.0 [3.23]	75.0 [2.95]	30.0 [1.19]	28.0 [1.10]	3/8 NPT
AM-534	138.0 [5.46]			3X 28.0 [1.10]	
AM-536	194.0 [7.64]			5X 28.0 [1.10]	
AM-538	250.0 [9.84]			7X 28.0 [1.10]	
AM-542	98.0 [3.86]	104.0 [4.09]	38.0 [1.50]	35.0 [1.38]	
AM-544	168.0 [6.61]			3X 35.0 [1.38]	
AM-546	238.0 [9.37]			5X 35.0 [1.38]	
AM-548	308.0 [12.13]			7X 35.0 [1.38]	

* Exhaust holes have 1mm offset from spacing centerline.

See our website www.AutomationDirect.com for complete Engineering drawings.

Solenoid Valve Cables and Connectors

These high quality connectors and over-molded cables help reduce wiring time. The lower voltage models, 24 V or 110 V AC/DC, include built-in surge suppression, Yellow LED indicator and are rated for connecting with electronics. The 230 V AC/DC models are rated for straight wired products. All models are available in five sizes based on DIN 43650.



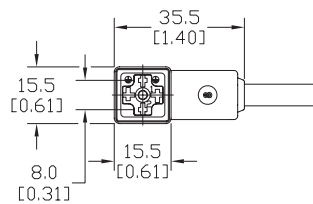
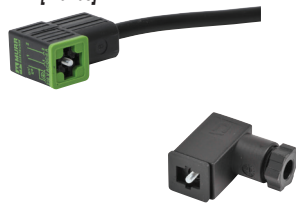
Features

- 8 mm, 9.4 mm, 10 mm, 11 mm and 18 mm square DIN styles
- Fits most popular solenoid valves and sensors
- Suppression and LED indication available in 24 V or 110 V AC/DC models
- PVC jacketed cables in 1, 3 or 5 meter lengths on select connectors
- Field wireable connectors on select models
- Polarity insensitive (follow solenoid, sensor, or other devices wiring diagram)



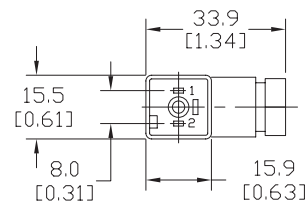
8mm Connectors

Dimensions shown
mm [inches]



Height = 25mm [0.98in]

Connector with Cable



Height = 26mm [1.02]

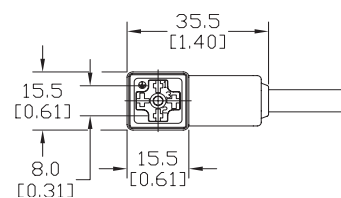
Field Wireable Connector

8mm (3-pole) Connectors (per DIN 43650 Form C)												
Part No.	Price	Voltage (AC/DC)	Current Rating	IP Rating	Wire Size	Cable Dia. (in.)	LED	Surge Protection	Wiring Figure	Screw Size/Torque	Weight (lbs)	Agency Approval
SC8-LS24-3		24 ±20%	max 4 A	67	18 AWG	0.23	yes	zener diode (D-Z DO-15 47V 2 W)	1	m2.5-0.45 x 25 mm / 0.4 Nm (3.5 in lb)	0.40	CSA (080128-0-000)
SC8-LS24-5	0.65											
SC8-LS110-3		110 ±10%	max 6 A	65	Solid 12 AWG Stranded 14 AWG w/Ferrule 16 AWG	field wireable gland size 0.20 to 0.24	no	none	7	m2.5-0.45 x 25 mm / 0.5 Nm (4.4 in lb)	0.41	
SC8-LS110-5	0.63											
SC8-3		230	max 6 A	67	18 AWG	0.23	no	none	2	m2.5-0.45 x 25 mm / 0.5 Nm (4.4 in lb)	0.39	none
SC8-0	9								0.10			
SC8-1	2								0.10			
SC8-5											0.68	

Last digit in part number denotes cable length in meters, a 0 indicates field termination.

8mm Transmitter Connector

Dimensions shown
mm [inches]



Height = 25mm [0.98in]

Connector with Cable

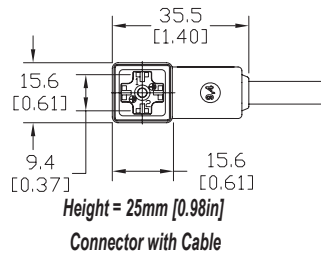
8mm (4-pole) Connectors (per DIN 43650 Form C)												
Part No.	Price	Voltage (AC/DC)	Current Rating	IP Rating	Wire Size	Cable Dia. (in.)	LED	Surge Protection	Wiring Figure	Screw Size/Torque	Weight (lbs)	Agency Approval
SC8-5T		230	max 6 A	67	18 AWG	0.26	yes	none	8	m3-0.5 x 42 mm / 0.5 Nm (4.4 in lb)	0.80	CSA (080128-0-000)

Last numeric digit in part number denotes cable length in meters, a 0 indicates field termination.

Solenoid Valve Cables and Connectors

9.4mm Connectors

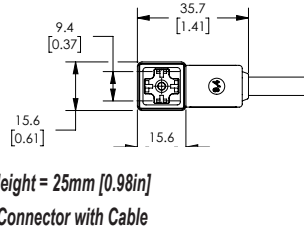
Dimensions shown
mm [inches]



9.4mm (3-pole) Connectors (DIN Style, Form C Industrial)												
Part No.	Price	Voltage (AC/DC)	Current Rating	IP Rating	Wire Size	Cable Dia. (in.)	LED	Surge Protection	Wiring Figure	Screw Size/Torque	Weight (lbs)	Agency Approval
SC9-LS24-3		24 ±20%	max 4 A	67	18 AWG	0.23	yes	zener diode (D-Z DO-15 47V 2 W)	1	m3-0.5 x 26 mm / 0.4 Nm (3.5 in lb)	0.40	CSA (080128-0-000)
SC9-LS24-5								zener diode (D-Z DO-41 ZY200 2 W)	7		0.64	
SC9-LS110-3		110 ±10%	max 6 A	67	18 AWG	no	none	2	m3-0.5 x 26 mm / 0.5 Nm (4.4 in lb)	0.40	none	
SC9-LS110-5										0.64		
SC9-3		230	max 6 A	67	18 AWG	no	none	2	m3-0.5 x 26 mm / 0.5 Nm (4.4 in lb)	0.40	none	
SC9-5										0.64		

9.4mm Connectors

Dimensions shown
mm [inches]

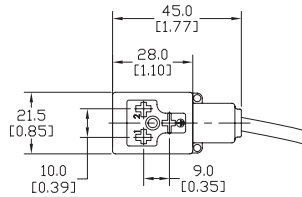


9.4mm (4-pole) Connectors (DIN Style, Form C Industrial)													
Part No.	Price	Voltage (AC/DC)	Current Rating	IP Rating	Wire Size	Cable Dia.	Cable Length	LED	Surge Protection	Wiring Figure	Screw Size/Torque	Weight (lbs)	Agency Approval
7000-94141-6270300		230 VAC/VDC	max 6 A	IP67	18 AWG	5.6-6.2 mm	9.8ft/3m	no	none	8	m3-0.5 x 26 mm / 0.4 Nm (3.5 in lb)	0.50	CSA (080128-0-000)/ RoHS
7000-94141-6270500							16.4ft/5m					0.79	

Solenoid Valve Cables and Connectors

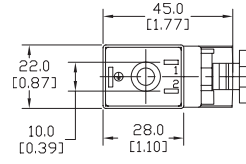
10mm Connectors

Dimensions shown
mm [inches]



Height = 30mm [1.18in]

Connector with Cable



Height = 41mm [1.61in]

Field Wireable Connector

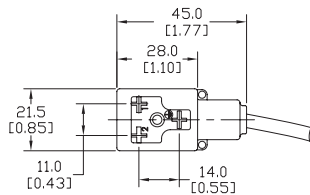
10mm (3-pole) Connectors (per DIN 43650 Form B)

Part No.	Price	Voltage (AC/DC)	Current Rating	IP Rating	Wire Size	Cable Dia. (in.)	LED	Surge Protection	Wiring Figure	Screw Size/Torque	Weight (lbs)	Agency Approval			
SC10-LS24-3		24 ±20%	max 4 A	67	18 AWG	0.23	yes	zener diode (D-Z DO-15 47V 2 W)	10	m3-0.5 x 30 mm / 0.4 Nm (3.5 in lb)	0.43	CSA (080128-0-000)			
SC10-LS24-5															0.68
SC10-LS110-3		110 ±10%	max 4 A												0.43
SC10-LS110-5															0.68
SC10-3		230	max 10 A	65	Solid 12 AWG Stranded 14 AWG w/Ferrule 16 AWG	field wireable gland size 0.24 to 0.32	no	none	3		0.43	none			
SC10-5															
SC10-LS24-0		24 ±20%	max 4 A	65	Solid 12 AWG Stranded 14 AWG w/Ferrule 16 AWG	field wireable gland size 0.24 to 0.32	yes	zener diode (D-Z DO-15 47V 2 W)	4	m3-0.5 x 42 mm / 0.5 Nm (4.4 in lb)	0.07	none			
SC10-LS110-0		110 ±10%	max 1 A										mov (SIOV S10 K130)	5	0.07

Last digit in part number denotes cable length in meters, a 0 indicates field termination.

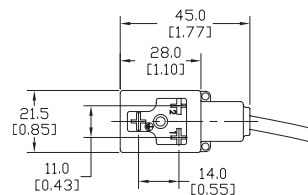
11mm Connectors

Dimensions shown
mm [inches]



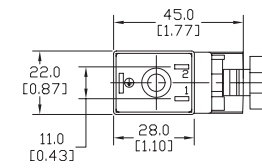
Height = 30mm [1.18in]

Connector with Cable



Height = 30mm [1.18in]

Reverse Connector with Cable



Height = 41mm [1.61in]

Field Wireable Connector

11mm (3-pole) Connectors (DIN Style, Form B Industrial)

Part No.	Price	Voltage (AC/DC)	Current Rating	IP Rating	Wire Size	Cable Dia. (in.)	LED	Surge Protection	Wiring Figure	Screw Size/Torque	Weight (lbs)	Agency Approval				
SC11-LS24-3		24 ±20%	max 4 A	67	18 AWG	0.23	yes	zener diode (D-Z DO-15 47V 2 W)	10	m3-0.5 x 30 mm / 0.4 Nm (3.5 in lb)	0.44	CSA (080128-0-000)				
SC11-LS24-5																0.67
SC11-LS110-3		110 ±10%	max 4 A													0.44
SC11-LS110-5																0.67
SC11-LS24-3R		24 ±20%	max 4 A	65	Solid 12 AWG Stranded 14 AWG w/Ferrule 16 AWG	field wireable gland size 0.24 to 0.32	no	none	10		0.44	none				
SC11-LS24-5R																0.67
SC11-LS110-3R		110 ±10%	max 4 A													0.44
SC11-LS110-5R																0.67
SC11-3		230	max 10 A	65	Solid 12 AWG Stranded 14 AWG w/Ferrule 16 AWG	field wireable gland size 0.24 to 0.32	no	none	3		0.44	none				
SC11-5																0.67
SC11-LS24-0		24 ±20%	max 4 A	65	Solid 12 AWG Stranded 14 AWG w/Ferrule 16 AWG	field wireable gland size 0.24 to 0.32	yes	zener diode (D-Z DO-15 47V 2 W)	4	m3-0.5 x 42 mm / 0.5 Nm (4.4 in lb)	0.07	none				
SC11-LS110-0		110 ±10%	max 1 A										mov (SIOV S10 K130)	5	0.07	
SC11-0		230	max 10 A										no	none	9	0.07

Last numeric digit in part number denotes cable length in meters, a 0 indicates field termination.

Solenoid Valve Cables and Connectors Wiring Diagrams

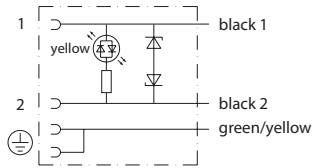


Figure No. 1

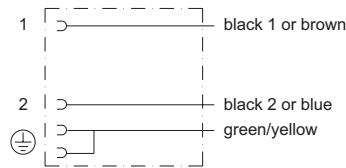


Figure No. 2

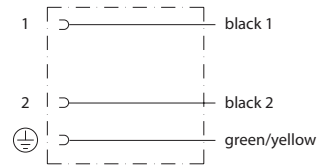


Figure No. 3

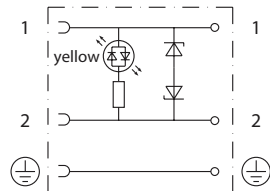


Figure No. 4

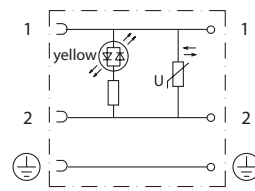


Figure No. 5

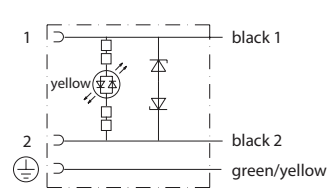


Figure No. 6

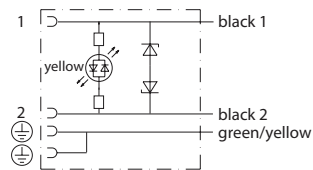


Figure No. 7

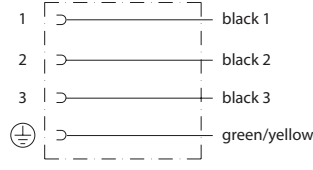


Figure No. 8

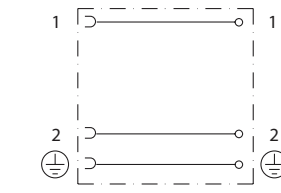


Figure No. 9

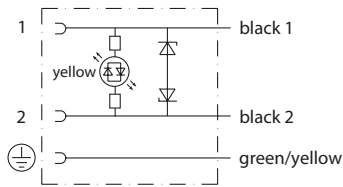


Figure No. 10



Exhaust Silencers

NITRA™ exhaust silencers are available in three styles and nine popular NPT and BSPT sizes. Add these to the exhaust ports of NITRA directional control solenoid valves to reduce noise.

Features

- Inch and metric sizes available
- Bronze cone and flat styles
- Plastic cylindrical
- Maximum pressure = 150 psi (10 bar)



SBC Series

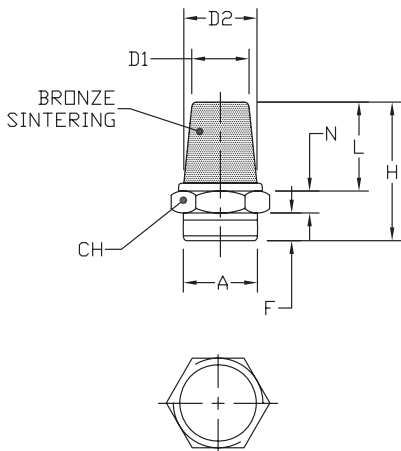


SBF Series



SPL Series

SBC Silencers

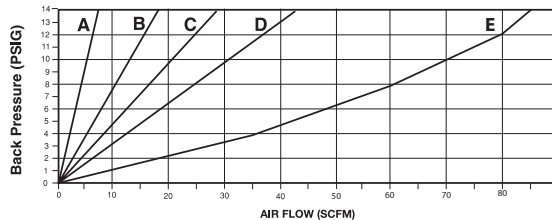


NITRA™ Bronze Cone Silencers											
Inch Sizes - dimensions in inches [mm]											
Part No.	Price	A	CH	D1	D2	F	H	L	N	Package Weight (lb)	Qty. per pack
SBC-18N		MNPT 1/8	0.47 [12.0]	0.32 [8.0]	0.28 [7.0]	0.24 [6.0]	0.94 [24.0]	0.55 [14.0]	0.16 [4.0]	0.01	2
SBC-14N		MNPT 1/4	0.63 [16.0]	0.47 [12.0]	0.40 [10.0]	0.32 [8.0]	1.18 [30.0]	0.71 [18.0]	0.16 [4.0]	0.01	
SBC-38N		MNPT 3/8	0.71 [18.0]	0.55 [14.0]	0.39 [11.0]	0.35 [9.0]	1.38 [35.0]	0.83 [21.0]	0.197 [5.0]	0.05	
SBC-12N		MNPT 1/2	0.94 [24.0]	0.75 [19.0]	0.59 [15.0]	0.40 [10.0]	1.73 [44.0]	1.10 [28.0]	0.24 [6.0]	0.15	
Metric Sizes - dimensions in inches [mm]											
SBC-M5		M5	0.31 [8.0]	0.20 [5.0]	0.16 [4.0]	0.20 [5.0]	0.79 [20.0]	0.47 [12.0]	0.12 [3.0]	0.01	2
SBC-18R		R 1/8	0.47 [12.0]	0.32 [8.0]	0.28 [7.0]	0.24 [6.0]	0.94 [24.0]	0.55 [14.0]	0.16 [4.0]	0.01	
SBC-14R		R 1/4	0.63 [16.0]	0.47 [12.0]	0.40 [10.0]	0.32 [8.0]	1.18 [30.0]	0.71 [18.0]	0.16 [4.0]	0.01	
SBC-38R		R 3/8	0.71 [18.0]	0.55 [14.0]	0.39 [11.0]	0.35 [9.0]	1.38 [35.0]	0.83 [21.0]	0.197 [5.0]	0.05	
SBC-12R		R 1/2	0.94 [24.0]	0.75 [19.0]	0.59 [15.0]	0.40 [10.0]	1.73 [44.0]	1.10 [28.0]	0.24 [6.0]	0.15	

Flow Characteristics

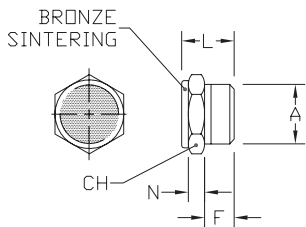
Bronze Cone Silencers

- A: SBC-M5
- B: SBC-18N; SBC-18R
- C: SBC-14N; SBC-14R
- D: SBC-38N; SBC-38R
- E: SBC-12N; SBC-12R



Noise Elimination = > 20db
 Filtered Element = 40 micron

SBF Silencers



NITRA™ Bronze Flat Silencers									
Inch Sizes - dimensions in inches [mm]									
Part No.	Price	A	CH	F	L	N	Package Weight (lb)	Qty. per pack	
SBF-18N		MNPT 1/8	0.47 [12.0]	0.24 [6.0]	0.47 [12.0]	0.16 [4.0]	0.01	2	
SBF-14N		MNPT 1/4	0.67 [17.0]	0.32 [8.0]	0.59 [15.0]	0.16 [4.0]	0.01		
SBF-38N		MNPT 3/8	0.75 [19.0]	0.35 [9.0]	0.67 [17.0]	0.20 [5.0]	0.05		
SBF-12N		MNPT 1/2	0.94 [24.0]	0.40 [10.0]	0.71 [18.0]	0.24 [6.0]	0.15		
Metric Sizes - dimensions in inches [mm]									
SBF-M5		M5	0.31 [8.0]	0.20 [5.0]	0.35 [9.0]	0.12 [3.0]	0.01	2	
SBF-18R		R 1/8	0.47 [12.0]	0.24 [6.0]	0.47 [12.0]	0.16 [4.0]	0.01		
SBF-14R		R 1/4	0.67 [17.0]	0.32 [8.0]	0.59 [15.0]	0.16 [4.0]	0.01		
SBF-38R		R 3/8	0.75 [19.0]	0.35 [9.0]	0.67 [17.0]	0.20 [5.0]	0.05		
SBF-12R		R 1/2	0.94 [24.0]	0.40 [10.0]	0.71 [18.0]	0.24 [6.0]	0.15		

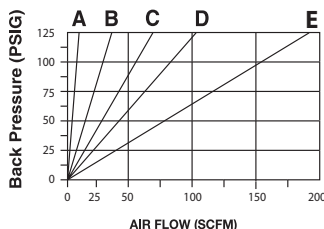


Exhaust Silencers

Flow Characteristics

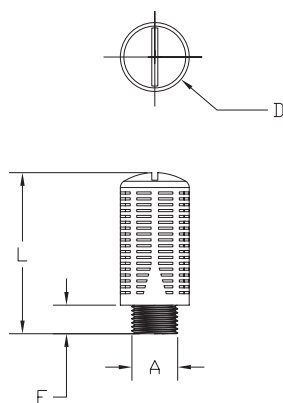
Bronze Flat Silencers

- A: SBF-M5
- B: SBF-18N; SBF-18R
- C: SBF-14N; SBF-14R
- D: SBF-28N; SBF-38R
- E: SBF-12N; SBF-12R



Noise Elimination = > 30db
 Filtered Element = 40 micron

SPL Silencers



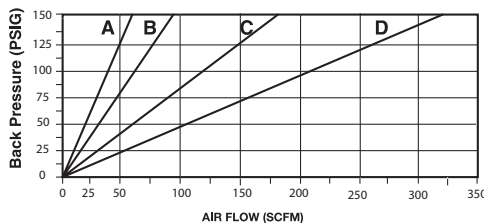
Note: SPL series plastic exhaust silencers have a maximum pressure of 80 PSI (5.5 bar).

NITRA™ Plastic Exhaust Silencers							
Inch Sizes - dimensions in inches [mm]							
Part No.	Price	A	D	L	F	Package Weight (lbs)	Qty. per pack
SPL-18N		MNPT 1/8	0.55 [13.8]	1.28 [32.4]	0.33 [8.3]	0.02	2
SPL-14N		MNPT 1/4	0.68 [17.3]	1.68 [42.5]	0.39 [9.9]	0.03	
SPL-38N		MNPT 3/8	0.87 [22.0]	2.10 [53.4]	0.40 [10.0]	0.06	
SPL-12N		MNPT 1/2	1.00 [25.4]	2.66 [67.6]	0.44 [11.1]	0.08	
Metric Sizes - dimensions in inches [mm]							
SPL-18R		R 1/8	0.60 [15.2]	1.33 [33.7]	0.24 [6.1]	0.02	2
SPL-14R		R 1/4	0.60 [18.8]	1.60 [40.6]	0.31 [7.7]	0.03	
SPL-38R		R 3/8	0.94 [24.0]	2.20 [55.9]	0.39 [9.9]	0.06	
SPL-12R		R 1/2	0.94 [24.0]	2.20 [55.9]	0.39 [9.9]	0.08	

Flow Characteristics

Plastic Silencers

- A: SPL-18N; SPL-18R
- B: SPL-14N; SPL-14R
- C: SPL-38N; SPL-38R
- D: SPL-12N; SPL-12R



Noise Elimination = > 30db
 Filtered Element = 40 micron