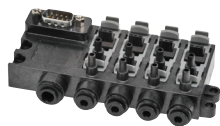




# Manifolds for Modular Solenoid Valves – BVM-3 Series



**BVM - 4-Station**

NITRA pneumatic BVM-3 series modular manifolds simplify the mounting and wiring of BVS-3 series solenoid valves\*. Made of sturdy glass reinforced thermoplastic with DIN rail mounting clips included, they are available in 4 and 8-station models. Push-to-connect inlet and out connections and a 9-pin D-sub connector allow quick and easy tubing and wiring.

## Features

- No tools required to install/remove valves
- 2, 3, 4 or 8-station manifolds available
- 6mm or 1/4" tube inlets
- 35 mm DIN rail mounting clips included
- 9-pin D-sub connector for easy wiring
- 2-year warranty



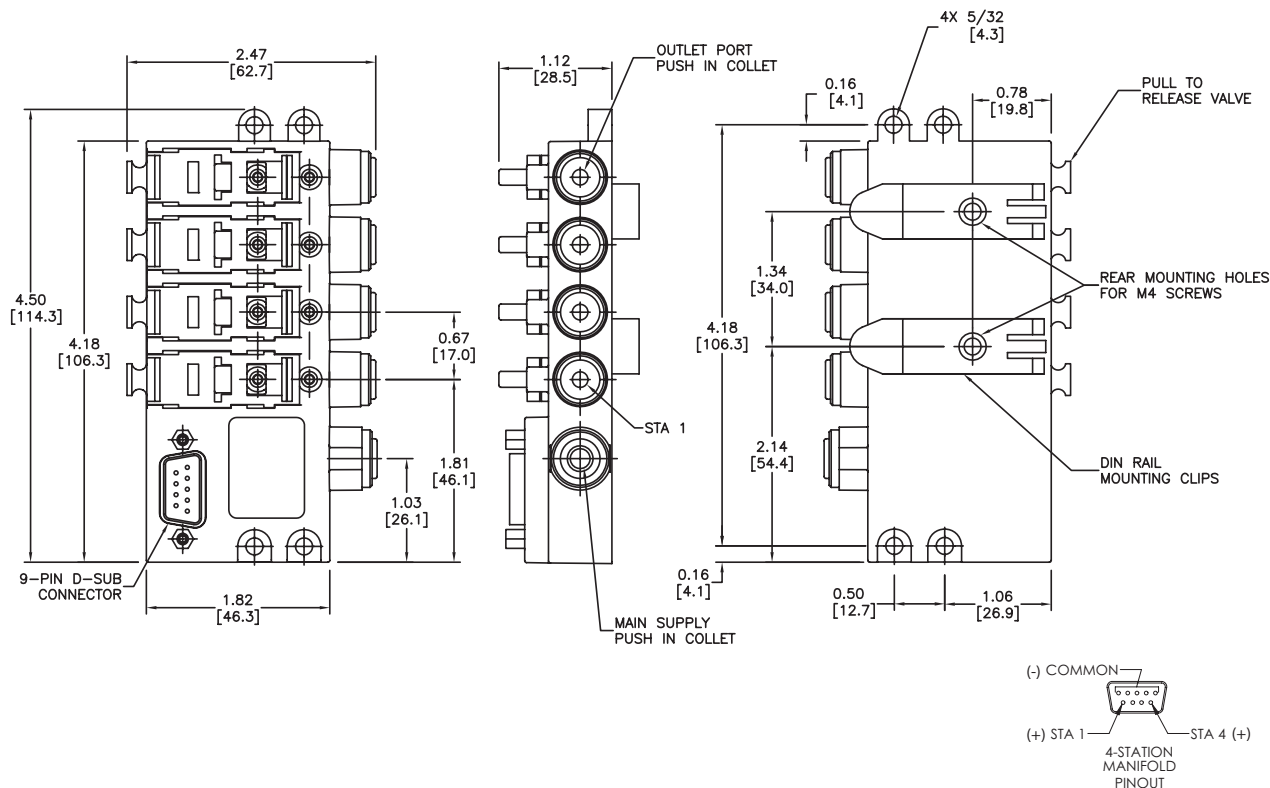
BVM Series Manifolds						
Part No.	Stations	Inlet	Outlet	Connection	Price	Weight (lbs)
<b>BVM-346M</b>	4	6 mm	5/32" (4 mm)	9-pin D-sub		0.3

\* Works with BVS series valves with flying leads ONLY. Does not accept DIN connector valves

## Dimensions

inches [mm]

### 4-Station Manifold



See our website [www.AutomationDirect.com](http://www.AutomationDirect.com) for complete Engineering drawings.

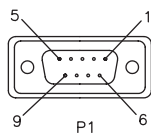


# Pneumatic Directional Control Solenoid Valves – BVS Series - Accessories

## Accessories

BVM Series Manifold Accessories			
Part No.	Description	Price	Weight (lbs)
<a href="#">ZL-DB9F-CBL-2P</a>	ZIPLink pigtail cable with 9-pin D-sub female connector, 28 AWG, 2.0 meter (6.6 ft) length		0.3
<a href="#">ZL-DB9F-CBL-5P</a>	ZIPLink pigtail cable with 9-pin D-sub female connector, 28 AWG, 5.0 meter (16.4 ft) length		0.5

### ZL-DB9F-CBL-xP Pinout



pin out

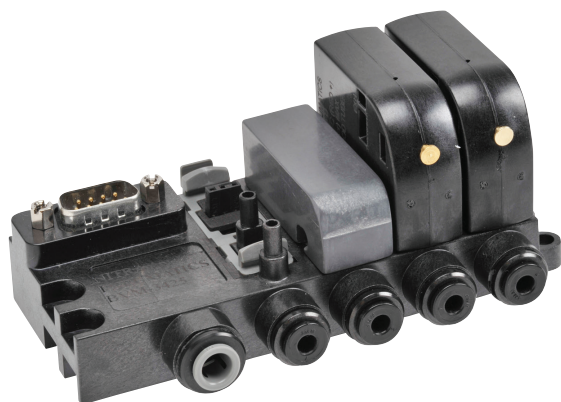
P1	P2	for BVM Series 4-station man	for BVM Series 8-station man
1	black	N/A	station 4
2	brown	N/A	station 3
3	red	N/A	station 2
4	orange	N/A	station 1
5	yellow	common	common
6	green	station 1	station 5
7	blue	station 2	station 6
8	violet	station 3	station 7
9	grey	station 4	station 8



**ZL-DB9F-CBL-xP**



See solenoid valve cables and connectors section



Above photo shows an assembled BVM Series manifold with BVS Series Solenoids and BVM blanking plug

Note: Manifold must have a BVS valve (flying leads ONLY)