

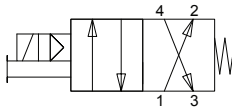


Pneumatic Directional Control Solenoid Valves – BVS-4 Series



BVS Series Solenoid with Leads

Valve Symbol



NITRA pneumatic BVS-4 series modular solenoid valves are body ported 4-port (4-way) spool valve models have removable flying leads or DIN Form C connector. Units are only DIN rail mountable when used with BVM series manifolds.

Features

- Body ported, 4-port (4-way) spool valves
- 1/4" (6mm) push-to-connect ports
- Flow coefficients (Cv) 0.8
- 2-position, single solenoid spring return
- 12 VDC, 24 VDC, 24 VAC or 120 VAC solenoid coils with LED status indication & surge suppression diode
- Flying leads or DIN Form C connection
- Lever manual operator - latching
- 2-year warranty



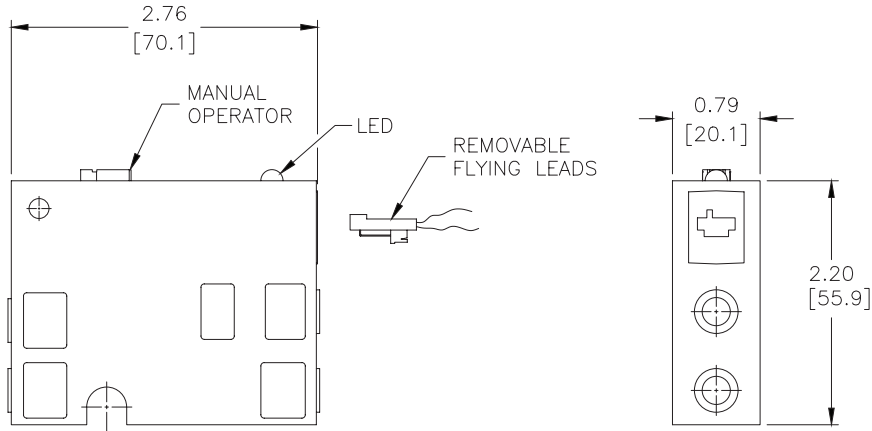
BVS (4-port, 2-position) 4 Series Specifications	
Models	BVS-4251-24A
Price	
Weight (lbs)	0.2
Acting	Spool (2-Position)
Port Size	1/4" Push-to-Connect
Orifice Size	0.2" [5.0 mm] (Cv = 0.8)
Fluid	Air or Inert Gas (to be filtered by 40 μ filter element)
Min. / Max. Pressure	30 psi (2 bar) - 120 psi (8.3 bar)
Vacuum	Air pilot models can be used in vacuum applications with external air signal to pilot ports.
Body	Glass Reinforced Thermoplastic
Voltage	24 VAC
Inrush Power	1.4 VA
Continuous ON Power	1.2 VA
Expected Life	20,000,000 cycles at max 3 cycles/second
Wiring	Removable 18" Flying Leads
Response Time	0.016 sec
Temperature - Operation and Storage	0 to 120 °F (-18 to +49 °C)
Lubrication	Not Required
Protection	IP 65



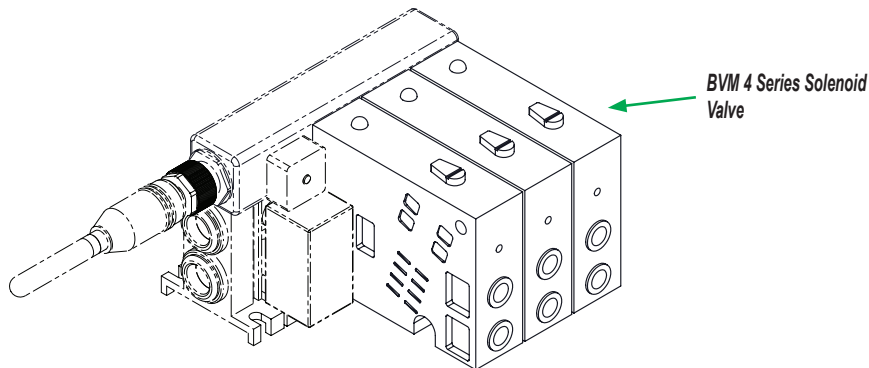
Pneumatic Directional Control Solenoid Valves – BVS-4 Series

Dimensions

inches [mm]



BVS 4 Series w/Removable Leads



See our website www.AutomationDirect.com for complete Engineering drawings.