

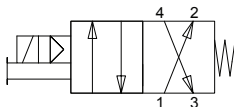


Pneumatic Directional Control Solenoid Valves – BVS-4 Series



BVS Series Solenoid with Leads

Valve Symbol



NITRA pneumatic BVS-4 series modular solenoid valves are body ported 4-port (4-way) spool valve models have removable flying leads or DIN Form C connector. Units are only DIN rail mountable when used with BVM series manifolds.

Features

- Body ported, 4-port (4-way) spool valves
- 1/4" (6mm) push-to-connect ports
- Flow coefficients (Cv) 0.8
- 2-position, single solenoid spring return
- 12VDC, 24VDC, 24VAC or 120VAC solenoid coils with LED status indication & surge suppression diode
- Flying leads or DIN Form C connection
- Lever manual operator - latching
- 2-year warranty



BVS (4-port, 2-position) 4 Series Specifications	
Models	BVS-4251-24A
Price	
Weight (lbs)	0.2
Acting	Spool (2-Position)
Port Size	1/4" Push-to-Connect
Orifice Size	0.2" [5.0 mm] (Cv = 0.8)
Fluid	Air or Inert Gas (to be filtered by 40µ filter element)
Min. / Max. Pressure	30psi (2bar) - 120psi (8.3 bar)
Vacuum	Air pilot models can be used in vacuum applications with external air signal to pilot ports.
Body	Glass Reinforced Thermoplastic
Voltage	24VAC
Inrush Power	1.4 VA
Continuous ON Power	1.2 VA
Expected Life	20,000,000 cycles at max 3 cycles/second
Wiring	Removable 18" Flying Leads
Response Time	0.016 sec
Temperature - Operation and Storage	0~120°F (-18~49°C)
Lubrication	Not Required
Protection	IP 65



Pneumatic Directional Control Solenoid Valves – BVS-4 Series

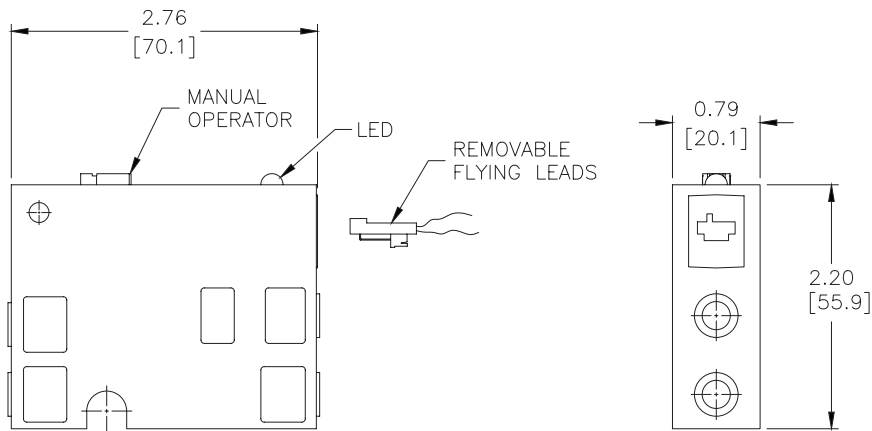
BVS (4-port, 2-position) 4 Series Specifications		
Models	BVS-46M2-12D	BVS-46M2-24A
Price		
Weight (lbs)	0.2	
Acting	Spool (2-Position)	
Port Size	6mm Push-to-Connect	
Orifice Size	0.2" [5.0 mm] (Cv = 0.8)	
Fluid	Air or Inert Gas (to be filtered by 40µ filter element)	
Min. / Max. Pressure	30psi (2bar) - 120psi (8.3 bar)	
Vacuum	Air pilot models can be used in vacuum applications with external air signal to pilot ports.	
Body	Glass Reinforced Thermoplastic	
Voltage	12VDC	24VAC
Inrush Power	1.6 W	1.4 VA
Continuous ON Power	1.3 W	1.2 VA
Expected Life	20,000,000 cycles at max 3 cycles/second	
Wiring	DIN 43650 Form C	DIN 43650 Form C
Response Time	0.016 sec	
Temperature - Operation and Storage	0~120°F (-18~49°C)	
Lubrication	Not Required	
Protection	IP 65	



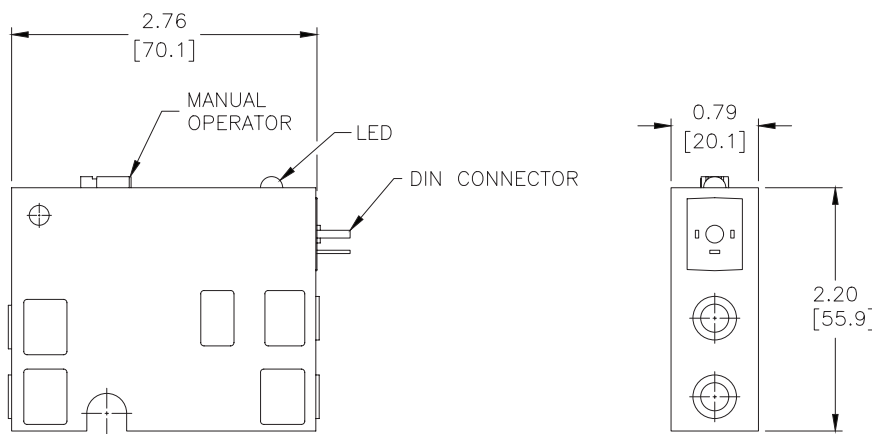
Pneumatic Directional Control Solenoid Valves – BVS-4 Series

Dimensions

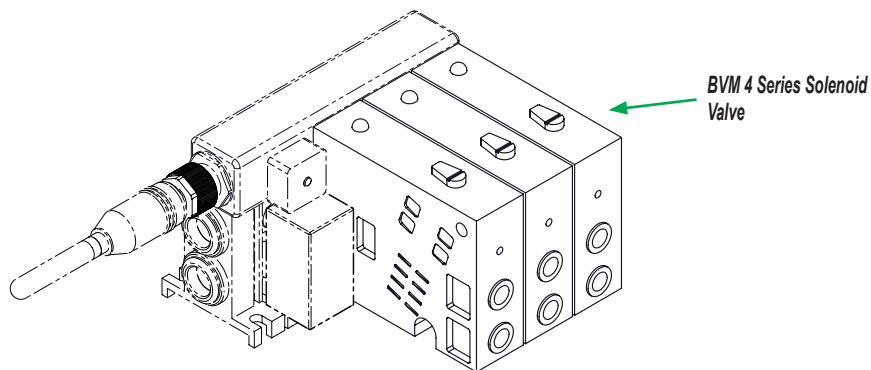
inches [mm]



BVS 4 Series w/Removable Leads



BVS 4 Series w/DIN 43650 Form C



See our website www.AutomationDirect.com for complete Engineering drawings.



Manifolds for Modular Solenoid Valves – BVM-4 Series



BVM - 2-Station



BVM - 3-Station



BVM - 4-Station

NITRA pneumatic BVM-4 series modular manifolds simplify the mounting of BVS-4 series solenoid valves. Made of sturdy glass reinforced thermoplastic with DIN rail mounting clips included, they are available in 2, 3 and 4-station models. Push-to-connect inlet and outlet ports allow quick and easy tubing connections.

Features

- No tools required to install/remove valves
- 2, 3 or 4-station manifolds available
- 3/8" or 10mm tube inlets and outlets
- 35 mm DIN rail mounting clips included
- 2-year warranty

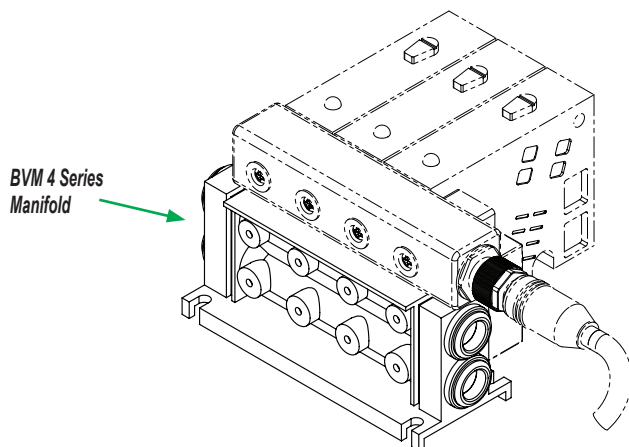
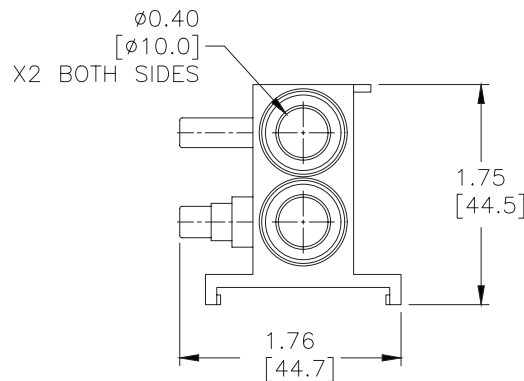
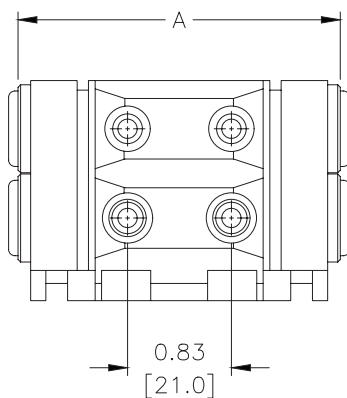


BVM Series Manifolds						
Part No.	Stations	Inlet	Outlet	Dimension "A" in [mm]	Price	Weight (lbs)
BVM-426M	2	10mm	10mm	2.71 [68.9]		0.3
BVM-436M	3	10mm	10mm	3.54 [89.9]		0.3
BVM-446M	4	10mm	10mm	4.37 [110.9]		0.3

Dimensions

inches [mm]

2-Station Manifold



See our website www.AutomationDirect.com for complete Engineering drawings.