

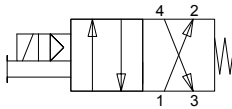


# Pneumatic Directional Control Solenoid Valves – BVS-4 Series



**BVS Series Solenoid with Leads**

**Valve Symbol**



NITRA pneumatic BVS-4 series modular solenoid valves are body ported 4-port (4-way) spool valve models have removable flying leads or DIN Form C connector. Units are only DIN rail mountable when used with BVM series manifolds.

## Features

- Body ported, 4-port (4-way) spool valves
- 1/4" (6mm) push-to-connect ports
- Flow coefficients (Cv) 0.8
- 2-position, single solenoid spring return
- 12VDC, 24VDC, 24VAC or 120VAC solenoid coils with LED status indication & surge suppression diode
- Flying leads or DIN Form C connection
- Lever manual operator - latching
- 2-year warranty

## BVS (4-port, 2-position) 4 Series Specifications

Models	<b><i>BVS-4251-24D</i></b>	<b><i>BVS-4251-24A</i></b>
<b>Price</b>	Retired	Retired
<b>Weight (lbs)</b>	0.2	
<b>Acting</b>	Spool (2-Position)	
<b>Port Size</b>	1/4" Push-to-Connect	
<b>Orifice Size</b>	0.2" [5.0 mm] (Cv = 0.8)	
<b>Fluid</b>	Air or Inert Gas (to be filtered by 40µ filter element)	
<b>Min. / Max. Pressure</b>	30psi (2bar) - 120psi (8.3 bar)	
<b>Vacuum</b>	Air pilot models can be used in vacuum applications with external air signal to pilot ports.	
<b>Body</b>	Glass Reinforced Thermoplastic	
<b>Voltage</b>	24VDC	24VAC
<b>Inrush Power</b>	1.4 W	1.4 VA
<b>Continuous ON Power</b>	1.2 W	1.2 VA
<b>Expected Life</b>	20,000,000 cycles at max 3 cycles/second	
<b>Wiring</b>	Removable 18" Flying Leads	Removable 18" Flying Leads
<b>Response Time</b>	0.016 sec	
<b>Temperature - Operation and Storage</b>	0~120°F (-18~49°C)	
<b>Lubrication</b>	Not Required	
<b>Protection</b>	IP 65	



# Pneumatic Directional Control Solenoid Valves – BVS-4 Series

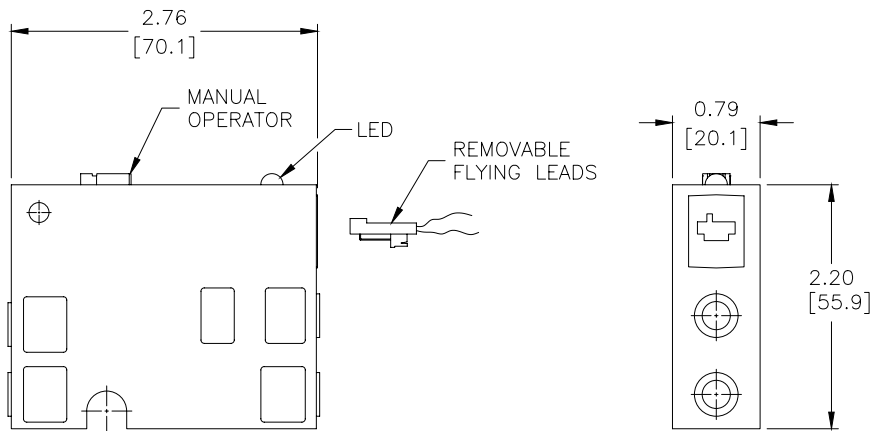
<b>BVS (4-port, 2-position) 4 Series Specifications</b>					
<b>Models</b>	<b>BVS-46M1-12D</b>	<b>BVS-46M2-12D</b>	<b>BVS-46M2-24A</b>	<b>BVS-46M1-120A</b>	<b>BVS-46M2-120A</b>
<b>Price</b>	Retired	\$41.00	\$43.00	Retired	\$57.00
<b>Weight (lbs)</b>	0.2				
<b>Acting</b>	Spool (2-Position)				
<b>Port Size</b>	6mm Push-to-Connect				
<b>Orifice Size</b>	0.2" [5.0 mm] (Cv = 0.8)				
<b>Fluid</b>	Air or Inert Gas (to be filtered by 40µ filter element)				
<b>Min. / Max. Pressure</b>	30psi (2bar) - 120psi (8.3 bar)				
<b>Vacuum</b>	Air pilot models can be used in vacuum applications with external air signal to pilot ports.				
<b>Body</b>	Glass Reinforced Thermoplastic				
<b>Voltage</b>	12VDC		24VAC	120VAC	
<b>Inrush Power</b>	1.6 W		1.4 VA	1.7 VA	
<b>Continuous ON Power</b>	1.3 W		1.2 VA	1.5 VA	
<b>Expected Life</b>	20,000,000 cycles at max 3 cycles/second				
<b>Wiring</b>	Removable 18" Flying Leads	DIN 43650 Form C	DIN 43650 Form C	Removable 18" Flying Leads	DIN 43650 Form C
<b>Response Time</b>	0.016 sec				
<b>Temperature - Operation and Storage</b>	0~120°F (-18~49°C)				
<b>Lubrication</b>	Not Required				
<b>Protection</b>	IP 65				



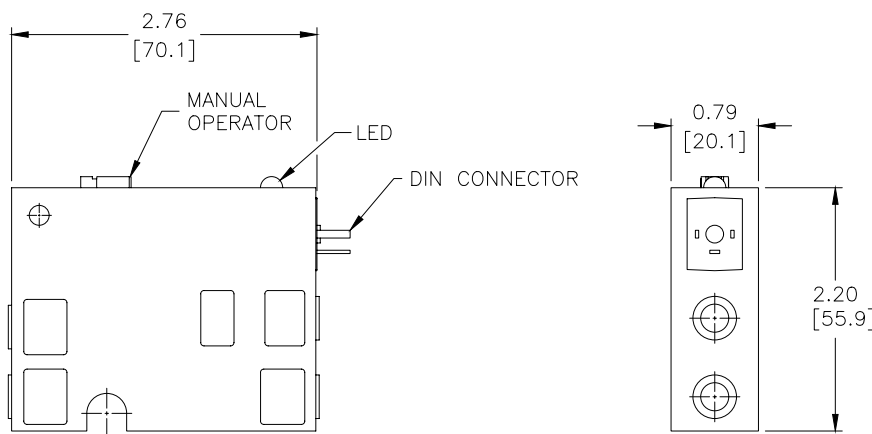
# Pneumatic Directional Control Solenoid Valves – BVS-4 Series

## Dimensions

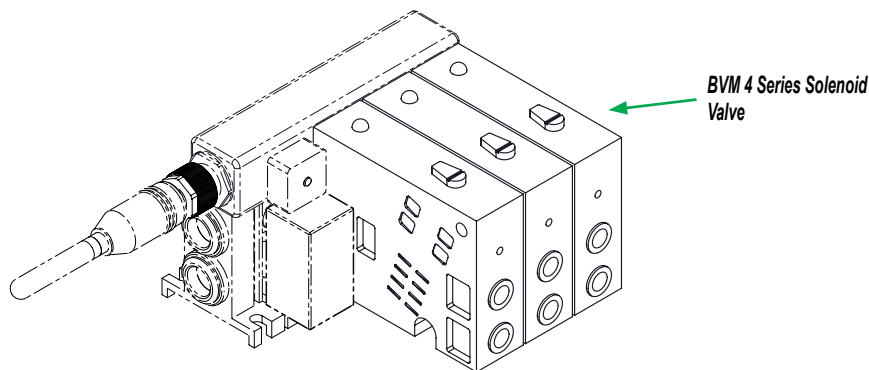
inches [mm]



**BVS 4 Series w/Removable Leads**



**BVS 4 Series w/DIN 43650 Form C**



See our website [www.AutomationDirect.com](http://www.AutomationDirect.com) for complete Engineering drawings.



# Manifolds for Modular Solenoid Valves – BVM-4 Series



**BVM - 2-Station**



**BVM - 3-Station**



**BVM - 4-Station**

NITRA pneumatic BVM-4 series modular manifolds simplify the mounting of BVS-4 series solenoid valves. Made of sturdy glass reinforced thermoplastic with DIN rail mounting clips included, they are available in 2, 3 and 4-station models. Push-to-connect inlet and outlet ports allow quick and easy tubing connections.

## Features

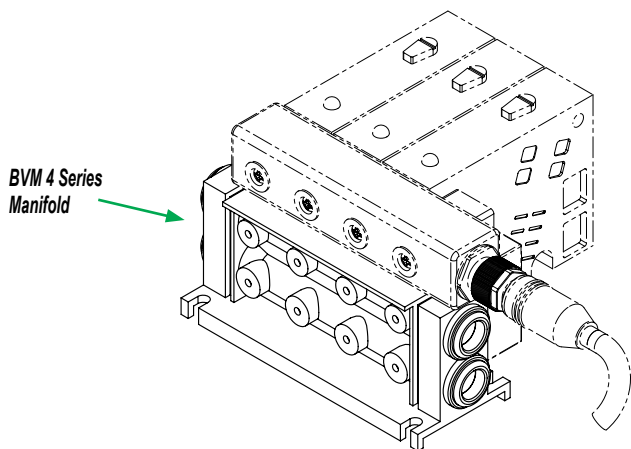
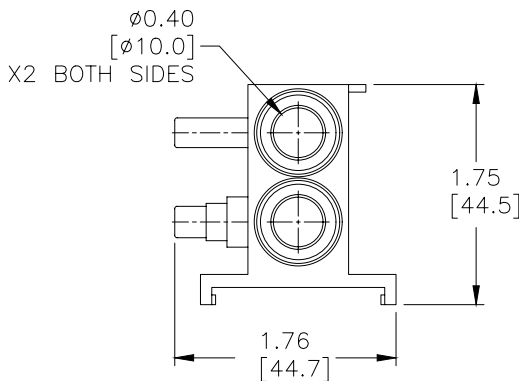
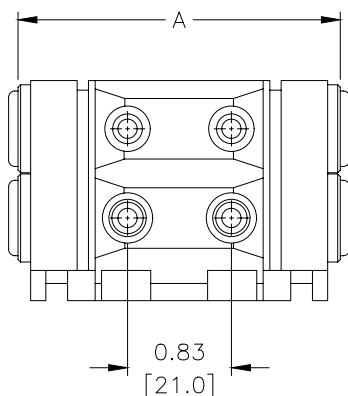
- No tools required to install/remove valves
- 2, 3 or 4-station manifolds available
- 3/8" or 10mm tube inlets and outlets
- 35 mm DIN rail mounting clips included
- 2-year warranty

BVM Series Manifolds						
Part No.	Stations	Inlet	Outlet	Dimension "A" in [mm]	Price	Weight (lbs)
<b>BVM-4225</b>	2	3/8"	3/8"	2.71 [68.9]	\$25.50	0.3
<b>BVM-426M</b>	2	10mm	10mm		\$18.50	0.3
<b>BVM-4325</b>	3	3/8"	3/8"	3.54 [89.9]	\$28.00	0.3
<b>BVM-436M</b>	3	10mm	10mm		\$20.00	0.3
<b>BVM-4425</b>	4	3/8"	3/8"	4.37 [110.9]	\$30.00	0.3
<b>BVM-446M</b>	4	10mm	10mm		\$20.50	0.3

## Dimensions

inches [mm]

### 2-Station Manifold



See our website [www.AutomationDirect.com](http://www.AutomationDirect.com) for complete Engineering drawings.



# BVS-4 Series Control Distribution Blocks



Part No. **BVPS-4**

NITRA pneumatic control distribution blocks are a convenient way to connect a bank of valves to a controller. Replace a bundle of solenoid cables with one 5-pole M12 cable. Each block matches up with a manifold of two to four stations.

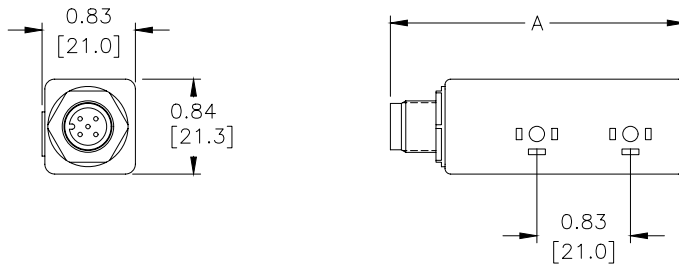
## Features

- Single 5-pole M12 wiring connection
- IP 65 rating
- 2 to 4 stations

BVS-4 Series Control Distribution Blocks				
Part No.	Description	Dimension "A" in [mm]	Price	Weight (lbs)
<b>BVPS-2</b>	NITRA control distribution block, AC/DC, 2 stations, M12 connector. For use with BVS-4 series valves.	2.60 [66.0]	\$51.00	0.2
<b>BVPS-3</b>	NITRA control distribution block, AC/DC, 3 stations, M12 connector. For use with BVS-4 series valves.	3.43 [87.0]	\$77.00	0.3
<b>BVPS-4</b>	NITRA control distribution block, AC/DC, 4 stations, M12 connector. For use with BVS-4 series valves.	4.25 [108.0]	\$102.00	0.3

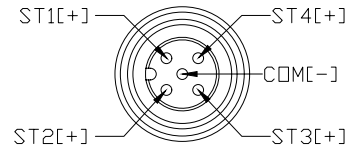
## Dimensions

inches [mm]

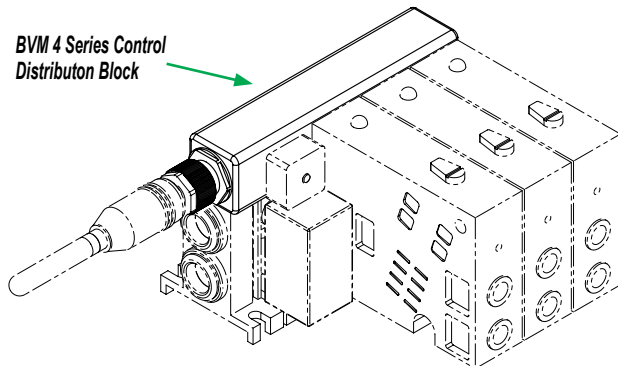


## Wiring

BVPS WIRING DIAGRAM



BVM 4 Series Control Distribution Block



For the BVS-4 Control Distribution Block use one of the following cable part numbers:

- 7000-12241-2150300
- 7000-12361-2150300
- 7000-12241-2150500
- 7000-12361-2150500
- 7000-12241-2151000
- 7000-12361-2151000

For further details see the wiring-solutions section of our catalog or our website [www.AutomationDirect.com](http://www.AutomationDirect.com)

See our website [www.AutomationDirect.com](http://www.AutomationDirect.com) for complete Engineering drawings.



# BVS-4 Series Control Distribution Blocks

## BVS-4 Series Control Distribution Blocks Accessories

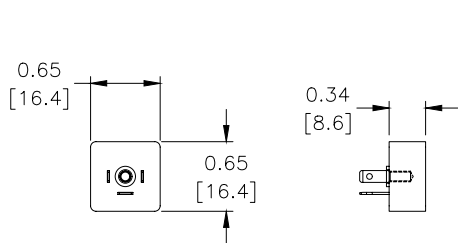


**BVPS-BP**

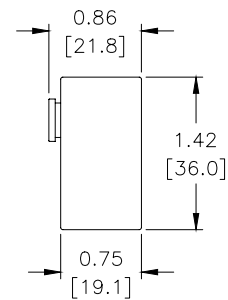
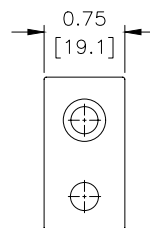
AVPS Series Control Distribution Blocks Accessories			
Part No.	Description	Price	Weight (lbs)
<b>BVPS-BP</b>	NITRA blanking plug, for use with BVPS series control distribution blocks.	\$14.00	0.1
<b>BVM-4BP2</b>	NITRA blanking plug, fiberglass reinforced plastic. For use with BVM-4x6M manifolds.	\$16.00	0.1

## Dimensions

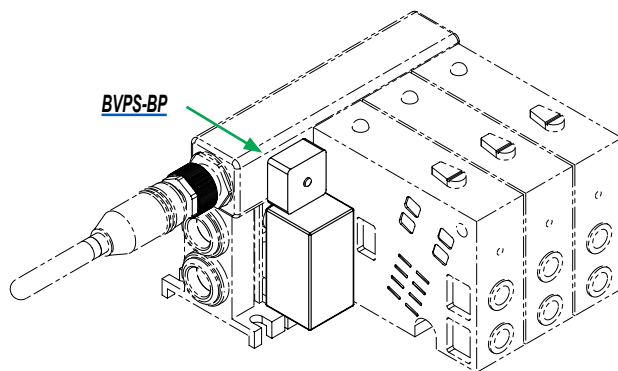
inches [mm]



Part No. **BVPS-BP**



Part No. **BVM-4BPx**



See our website [www.AutomationDirect.com](http://www.AutomationDirect.com) for complete Engineering drawings.