

NEMA 3, 4, 4X, and 12 Stainless Steel Freestanding Single-Door with 3-Point Handle



Applications

Designed to house electrical and electronic controls, terminals, and instruments in areas that are regularly hosed down or are otherwise very wet. Enclosures are also suitable for outdoor applications.



Construction

- Bodies and doors fabricated from 12-gauge 304 stainless steel
- Continuously-welded seams ground smooth
- "Uni-strut" mounting channels are welded horizontally to interior body sides (top, bottom and center)
- Optional swing, half, full, and rack panels can be mounted anywhere along "uni-strut" channel
- Rolled lip around three sides of door and along top of enclosure's opening excludes liquids and contaminants from entering
- 3-point 316L SS padlocking handle
- Heavy gauge continuous hinge
- Pull hinge pin to remove doors
- Removable print pocket is provided
- Heavy-duty removable lifting eyes
- Doors are sealed with poured-in-place polyurethane gasket
- Grounding provisions provided
- Uses WAL3_SS series handles

Finish

- Smooth-grained stainless steel finish

Listings

- UL 5083, 4, 4X, and 12 [UL File E64791]
- NEMA/EEMAC 3, 4, 4X, and 12



Note: For current listings, please see www.automationdirect.com

Shipping Schedule

Same day 1 - 5 days 1 - 7 days 1 - 15 days 1 - 20 days

Color indicates shipping lead time in business days.

NEMA 3, 4, 4X, and 12 Stainless Steel Freestanding Single-Door Enclosures with 3-Point Handle

Part Number	Price	Enclosure SizeHxWxD
WA602418SSFSN43PT	—	60.12 x 24.12 x 19.23 [1527 x 613 x 488]
WA603624SSFSN43PT	—	60.13 x 36.12 x 25.23 [1527 x 917 x 641]
WA722418SSFSN43PT	Retired	72.12 x 24.13 x 19.23 [1832 x 613 x 488]
WA722424SSFSN43PT	—	72.13 x 24.13 x 25.23 [1832 x 613 x 641]
WA723018SSFSN43PT	—	72.13 x 30.13 x 19.23 [1832 x 765 x 488]
WA723024SSFSN43PT	Retired	72.13 x 30.12 x 25.23 [1832 x 765 x 641]
WA723618SSFSN43PT	—	72.12 x 36.12 x 19.23 [1832 x 917 x 488]
WA723624SSFSN43PT	—	72.13 x 36.12 x 25.23 [1832 x 917 x 641]
WA723630SSFSN43PT	Retired	72.13 x 36.12 x 31.23 [1832 x 917 x 793]
WA723636SSFSN43PT	—	72.12 x 36.12 x 37.23 [1832 x 917 x 946]
WA902420SSFSN43PT	Retired	90.13 x 24.12 x 21.23 [2289 x 613 x 539]
WA903620SSFSN43PT	—	90.13 x 36.12 x 21.23 [2289 x 917 x 539]
WA903624SSFSN43PT	—	90.13 x 36.12 x 25.23 [2289 x 917 x 641]
WA903636SSFSN43PT	Retired	90.13 x 36.12 x 37.23 [2289 x 917 x 946]

Notes: Subpanels must be ordered separately.
Dimensions in inches [millimeters];
Letters in table correspond to letters on dimensional drawings.

NEMA 3, 4, 4X, and 12 Stainless Steel Freestanding Single-Door with 3-Point Handle



Shipping Schedule

Same day 1 - 5 days 1 - 7 days 1 - 15 days 1 - 20 days

Color indicates shipping lead time in business days.

Standard Subpanels

Enclosures	Full Height		Half Height	
	Painted Steel	Galvanized	Painted Steel	Galvanized
WA602418SSFSN43PT	WA60P24F1	WA60P24F1G	WA60P24F2	WA60P24F2G
WA603624SSFSN43PT	WA60P36F1	WA60P36F1G	WA60P36F2	WA60P36F2G
WA722418SSFSN43PT	WA72P24F1	WA72P24F1G	WA72P24F2	WA72P24F2G
WA722424SSFSN43PT	WA72P24F1	WA72P24F1G	WA72P24F2	WA72P24F2G
WA723018SSFSN43PT	WA72P30F1	WA72P30F1G	WA72P30F2	WA72P30F2G
WA723024SSFSN43PT	WA72P30F1	WA72P30F1G	WA72P30F2	WA72P30F2G
WA723618SSFSN43PT	WA72P36F1	WA72P36F1G	WA72P36F2	WA72P36F2G
WA723624SSFSN43PT	WA72P36F1	WA72P36F1G	WA72P36F2	WA72P36F2G
WA723630SSFSN43PT	WA72P36F1	WA72P36F1G	WA72P36F2	WA72P36F2G
WA723636SSFSN43PT	WA72P36F1	WA72P36F1G	WA72P36F2	WA72P36F2G
WA902420SSFSN43PT	WA90P24F1	WA90P24F1G	WA90P24F2	WA90P24F2G
WA903620SSFSN43PT	WA90P36F1	WA90P36F1G	WA90P36F2	WA90P36F2G
WA903624SSFSN43PT	WA90P36F1	WA90P36F1G	WA90P36F2	WA90P36F2G
WA903636SSFSN43PT	WA90P36F1	WA90P36F1G	WA90P36F2	WA90P36F2G

Swing-Out Panels

Enclosures	Full Height		Half Height	
	Painted Steel	Galvanized	Painted Steel	Galvanized
WA602418SSFSN43PT	WA60SP24F3	WA60SP24F3G	WA60SP24F4	WA60SP24F4G
WA603624SSFSN43PT	WA60SP36F3	WA60SP36F3G	WA60SP36F4	WA60SP36F4G
WA722418SSFSN43PT	WA72SP24F3	WA72SP24F3G	WA72SP24F4	WA72SP24F4G
WA722424SSFSN43PT	WA72SP24F3	WA72SP24F3G	WA72SP24F4	WA72SP24F4G
WA723018SSFSN43PT	WA72SP30F3	WA72SP30F3G	WA72SP30F4	WA72SP30F4G
WA723024SSFSN43PT	WA72SP30F3	WA72SP30F3G	WA72SP30F4	WA72SP30F4G
WA723618SSFSN43PT	WA72SP36F3	WA72SP36F3G	WA72SP36F4	WA72SP36F4G
WA723624SSFSN43PT	WA72SP36F3	WA72SP36F3G	WA72SP36F4	WA72SP36F4G
WA723630SSFSN43PT	WA72SP36F3	WA72SP36F3G	WA72SP36F4	WA72SP36F4G
WA723636SSFSN43PT	WA72SP36F3	WA72SP36F3G	WA72SP36F4	WA72SP36F4G
WA902420SSFSN43PT	—	—	—	—
WA903620SSFSN43PT	WA90SP36F3	WA90SP36F3G	WA90SP36F4	WA90SP36F4G
WA903624SSFSN43PT	WA90SP36F3	WA90SP36F3G	WA90SP36F4	WA90SP36F4G
WA903636SSFSN43PT	WA90SP36F3	WA90SP36F3G	WA90SP36F4	WA90SP36F4G

NEMA 3, 4, 4X, and 12 Stainless Steel Freestanding Single-Door with 3-Point Handle



Shipping Schedule

Same day 1 - 5 days 1 - 7 days 1 - 15 days 1 - 20 days

Color indicates shipping lead time in business days.

Side-Mount Panels for NEMA 3, 4, 4X, and 12 SS Freestanding Single-Door Enclosures with 3-Point Handle

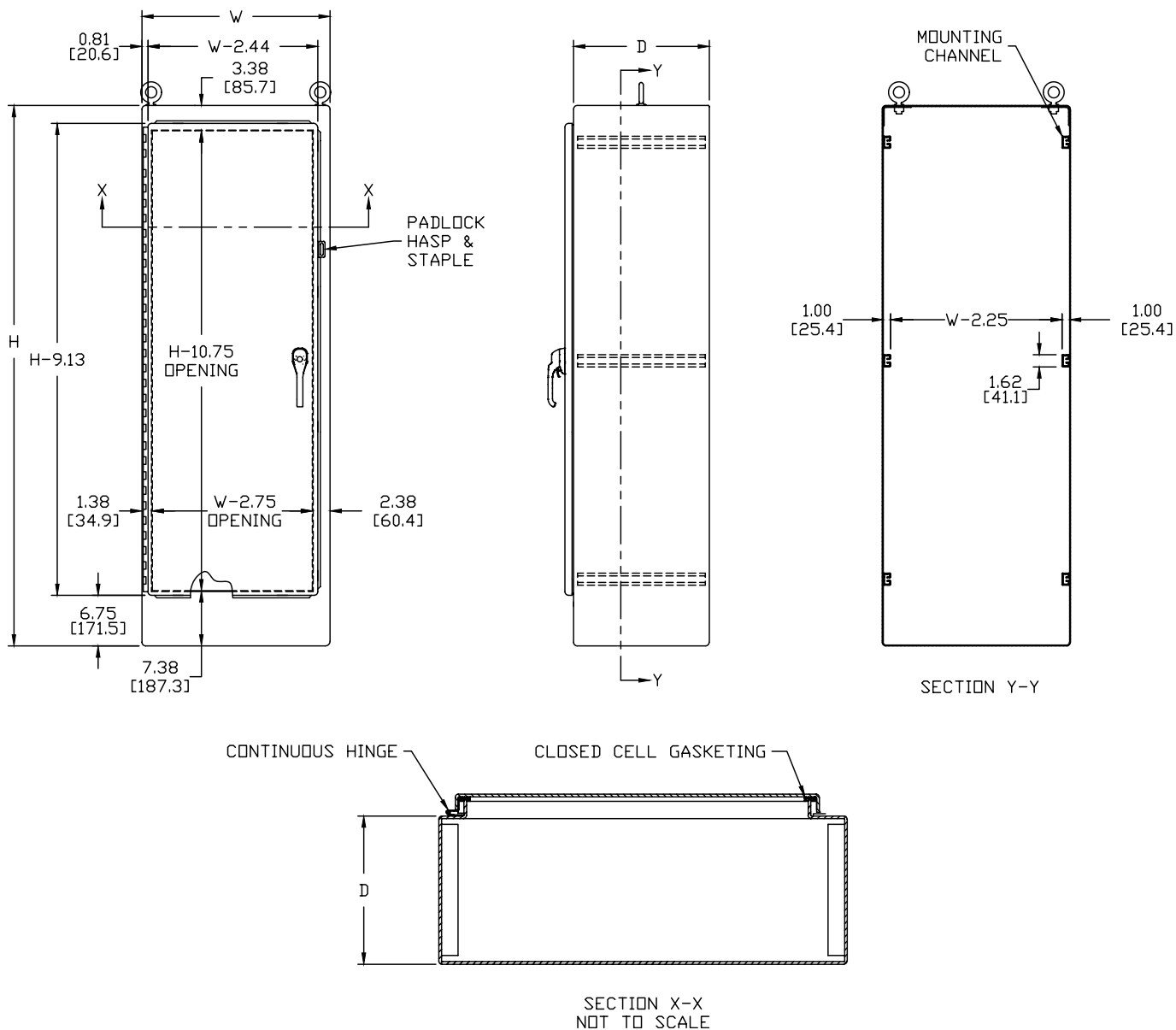
Enclosures	Painted Steel		Galvanized	
WA602418SSFSN43PT	WA60SMP14		WA60SMP14G	
WA603624SSFSN43PT	WA60SMP14		WA60SMP14G	
WA722418SSFSN43PT	WA72SMP14		WA72SMP14G	
WA722424SSFSN43PT	WA72SMP14	WA72SMP20	WA72SMP14G	WA72SMP20G
WA723018SSFSN43PT	WA72SMP14		WA72SMP14G	
WA723024SSFSN43PT	WA72SMP14	WA72SMP20	WA72SMP14G	WA72SMP20G
WA723618SSFSN43PT	WA72SMP14		WA72SMP14G	
WA723624SSFSN43PT	WA72SMP14	WA72SMP20	WA72SMP14G	WA72SMP20G
WA723630SSFSN43PT	WA72SMP14	WA72SMP20	WA72SMP14G	WA72SMP20G
WA723636SSFSN43PT	WA72SMP14	WA72SMP20	WA72SMP14G	
WA902420SSFSN43PT	WA90SMP14		WA90SMP14G	
WA903620SSFSN43PT	WA90SMP14		WA90SMP14G	
WA903624SSFSN43PT	WA90SMP14	WA90SMP20	WA90SMP14G	WA90SMP20G
WA903636SSFSN43PT	WA90SMP14	WA90SMP20	WA90SMP14G	WA90SMP20G

Enclosures	Swing-Out Rack	Center Post Support
WA602418SSFSN43PT	—	—
WA603624SSFSN43PT	—	—
WA722418SSFSN43PT	—	—
WA722424SSFSN43PT	—	—
WA723018SSFSN43PT	WA7236SOF19	—
WA723024SSFSN43PT	WA7236SOF19	—
WA723618SSFSN43PT	WA7236SOF19	—
WA723624SSFSN43PT	WA7236SOF19	—
WA723630SSFSN43PT	WA7236SOF19	—
WA723636SSFSN43PT	WA7236SOF19	—
WA902420SSFSN43PT	—	—
WA903620SSFSN43PT	WA9036SOF19	—
WA903624SSFSN43PT	WA9036SOF19	—
WA903636SSFSN43PT	WA9036SOF19	—

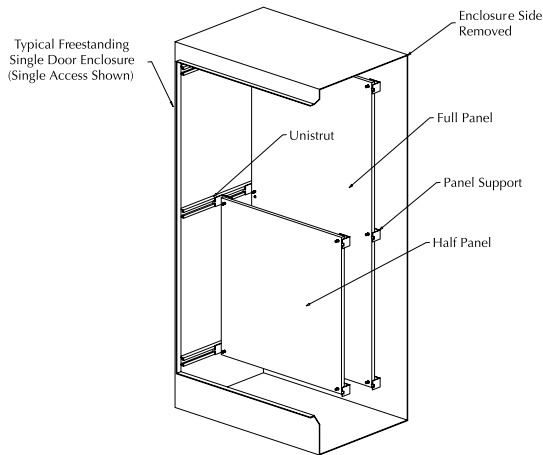
NEMA 3, 4, 4X, and 12 Stainless Steel Freestanding Single-Door with 3-Point Handle



Dimensions



WA-F1/F2 Panels for Single-Door Freestanding Enclosures



Description

- Panels for single-door single-access and single-door dual-access, freestanding NEMA 12, and freestanding NEMA 4 enclosures
- Can be positioned anywhere along horizontal depth-wise mounting channels
- Half-height panels can be located in the upper or lower portion of the enclosure
- Mounting hardware is furnished with each panel
- Painted steel subpanels are painted white polyester powder over phosphatized surfaces
- Galvanized subpanels have a conductive finish (no paint)
- May be used in two-door enclosures along with other freestanding accessories

Shipping Schedule

Same day 1 - 5 days 1 - 7 days 1 - 15 days 1 - 20 days

Color indicates shipping lead time in business days.

Painted Steel	Price	Galvanized	Price	Steel Gauge	Panel Size HxW	Subpanel Type
<u>WA60P24F1</u>	—	<u>WA60P24F1G</u>	Retired	12	48.00 x 20.00 [1219 x 508]	Full
<u>WA60P24F2</u>	—	<u>WA60P24F2G</u>	Retired	10	24.88 x 20.00 [632 x 508]	Half
<u>WA60P36F1</u>	—	<u>WA60P36F1G</u>	—	12	48.00 x 32.00 [1219 x 813]	Full
<u>WA60P36F2</u>	—	<u>WA60P36F2G</u>	—	12	24.88 x 32.00 [632 x 813]	Half
<u>WA72P24F1</u>	—	<u>WA72P24F1G</u>	—	12	60.00 x 20.00 [1524 x 508]	Full
<u>WA72P24F2</u>	Retired	<u>WA72P24F2G</u>	Retired	12	30.88 x 20.00 [784 x 508]	Half
<u>WA72P30F1</u>	—	<u>WA72P30F1G</u>	—	12	60.00 x 26.00 [1524 x 660]	Full
<u>WA72P30F2</u>	Retired	<u>WA72P30F2G</u>	Retired	10	30.88 x 26.00 [784 x 660]	Half
<u>WA72P36F1</u>	—	<u>WA72P36F1G</u>	—	12	60.00 x 32.00 [1524 x 813]	Full
<u>WA72P36F2</u>	Retired	<u>WA72P36F2G</u>	Retired	12	30.88 x 32.00 [784 x 813]	Half
<u>WA90P24F1</u>	—	<u>WA90P24F1G</u>	—	12	78.00 x 20.00 [1981 x 508]	Full
<u>WA90P24F2</u>	Retired	<u>WA90P24F2G</u>	Retired	10	39.88 x 20.00 [1013 x 508]	Half
<u>WA90P36F1</u>	—	<u>WA90P36F1G</u>	—	12	78.00 x 32.00 [1981 x 813]	Full
<u>WA90P36F2</u>	Retired	<u>WA90P36F2G</u>	Retired	10	39.88 x 32.00 [1013 x 813]	Half

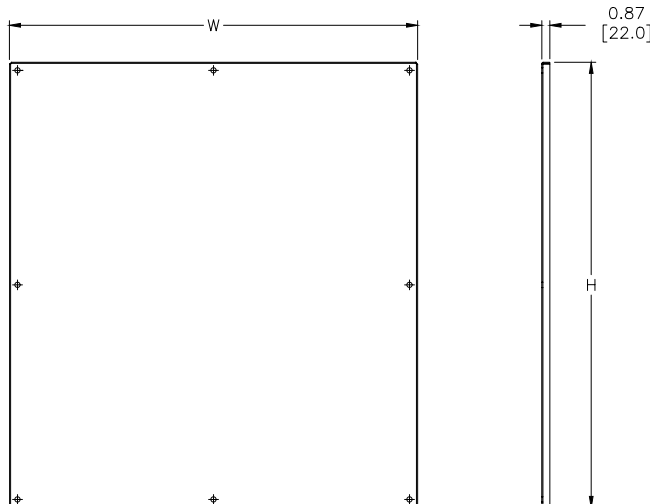
Notes: Dimensions in inches [millimeters].

Letters in table correspond to letters on dimensional drawing.

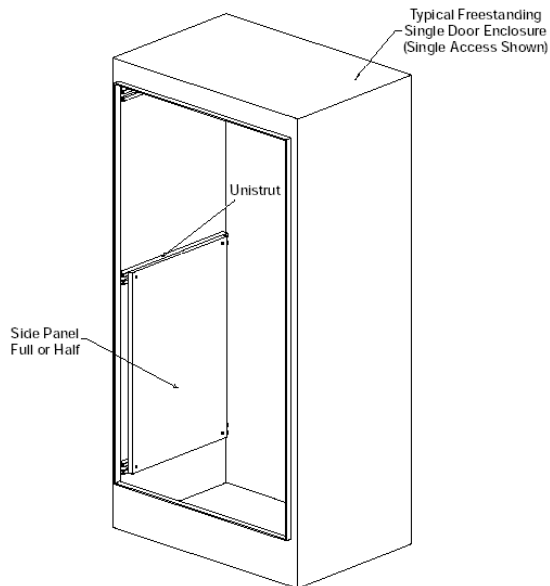
If used in a two-door enclosure, a center panel support must be ordered.

Suffix F1= full panel, F2 = half panel

Dimensions



WA-SMP Series Side-Mount Panels for Freestanding Enclosures



Description

- Panels for freestanding NEMA 4 and freestanding NEMA 12 enclosures
- Panels are fabricated from 12-gauge steel
- They provide extra mounting space on the sides of the enclosure
- Mounting hardware is furnished with each panel
- Painted steel subpanels are painted white polyester powder over phosphatized surfaces
- Galvanized subpanels have a conductive finish (no paint)
- Panels attach securely to mounting channels

Shipping Schedule

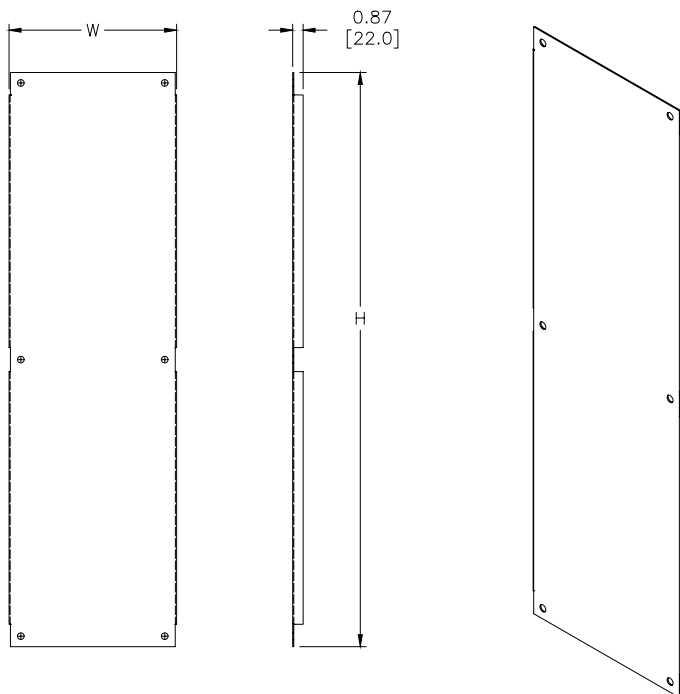
Same day 1 - 5 days 1 - 7 days 1 - 15 days 1 - 20 days

Color indicates shipping lead time in business days.

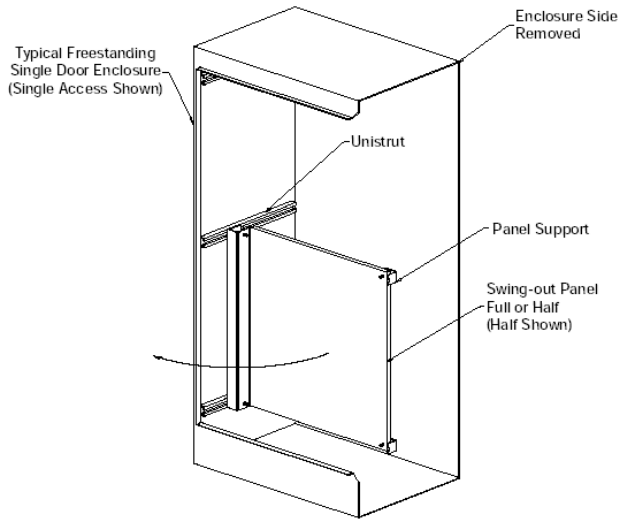
Painted Steel	Price	Galvanized	Price	Panel Size AxB
WA60SMP14	Retired	WA60SMP14G	Retired	48.00 x 14.00 [1219 x 356]
WA72SMP14	—	WA72SMP14G	Retired	60.00 x 14.00 [1524 x 356]
WA72SMP20	—	WA72SMP20G	Retired	60.00 x 20.00 [1524 x 508]
WA90SMP14	Retired	WA90SMP14G	Retired	78.00 x 14.00 [1981 x 356]
WA90SMP20	Retired	WA90SMP20G	Retired	78.00 x 20.00 [1981 x 508]

Note: Dimensions in inches [millimeters].

Dimensions



WASP-F3/F4 Series Accessory Swing-Out Panels For Freestanding Enclosures



Description

- Panels for freestanding NEMA 12 enclosures and freestanding NEMA 4 enclosures
- Full-height and half-height swing-out panels are available
- Half-height panels can be located in the upper or lower portion of the enclosure
- Mounting can be on either side of the enclosure
- Painted steel subpanels are painted white polyester powder over phosphatized surfaces
- Galvanized subpanels have a conductive finish (no paint)
- May be used in two-door enclosures along with other freestanding accessories
- Fabricated from 12-gauge steel
- Mounting hardware is furnished with each panel

Shipping Schedule

Same day 1 - 5 days 1 - 7 days 1 - 15 days 1 - 20 days

Color indicates shipping lead time in business days.

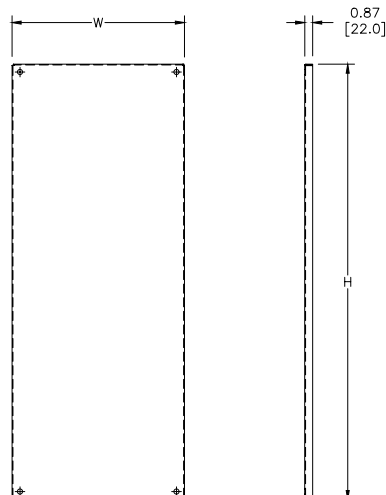
Painted Steel	Price	Galvanized	Price	Panel Size AxB	Subpanel Type
<u>WA60SP24F3</u>	Retired	<u>WA60SP24F3G</u>	Retired	48.00 x 19.00 [1219 x 483]	Full
<u>WA60SP24F4</u>	Retired	<u>WA60SP24F4G</u>	Retired	24.88 x 19.00 [632 x 483]	Half
<u>WA60SP36F3</u>	Retired	<u>WA60SP36F3G</u>	Retired	48.00 x 31.00 [1219 x 787]	Full
<u>WA60SP36F4</u>	Retired	<u>WA60SP36F4G</u>	Retired	24.88 x 31.00 [632 x 787]	Half
<u>WA72SP24F3</u>	Retired	<u>WA72SP24F3G</u>	Retired	60.00 x 19.00 [1524 x 483]	Full
<u>WA72SP24F4</u>	Retired	<u>WA72SP24F4G</u>	Retired	30.88 x 19.00 [784 x 483]	Half
<u>WA72SP30F3</u>	Retired	<u>WA72SP30F3G</u>	Retired	60.00 x 25.00 [1524 x 635]	Full
<u>WA72SP30F4</u>	Retired	<u>WA72SP30F4G</u>	Retired	30.88 x 25.00 [784 x 635]	Half
<u>WA72SP36F3</u>	Retired	<u>WA72SP36F3G</u>	Retired	60.00 x 31.00 [1524 x 787]	Full
<u>WA72SP36F4</u>	Retired	<u>WA72SP36F4G</u>	Retired	30.88 x 31.00 [784 x 787]	Half
<u>WA90SP36F3</u>	Retired	<u>WA90SP36F3G</u>	Retired	78.00 x 31.00 [1981 x 787]	Full
<u>WA90SP36F4</u>	Retired	<u>WA90SP36F4G</u>	Retired	39.88 x 31.00 [1013 x 787]	Half

Notes: Dimensions in inches [millimeters].

If used in a two-door enclosure, a center panel support must be ordered.

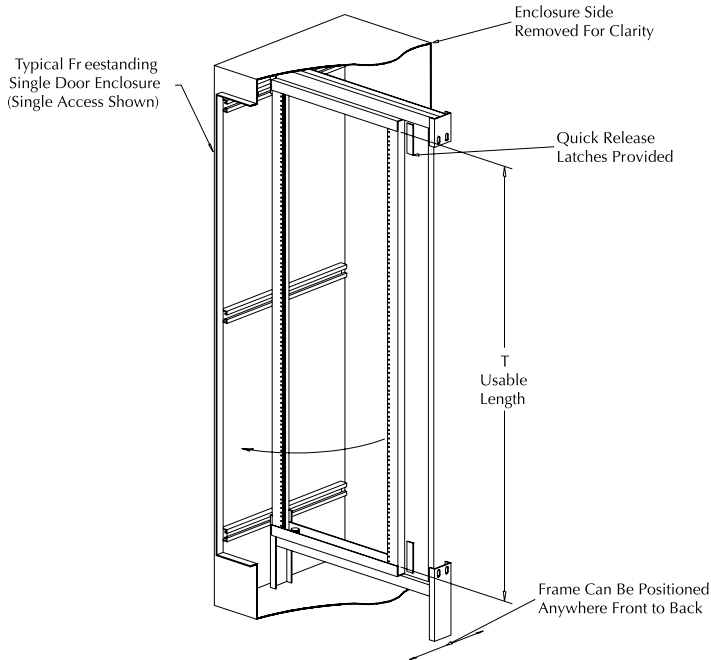
Suffix F3 =full panel, F4 =half panel

Dimensions



Enclosure Accessories – Rack Mounting

Swing-Out Rack Mounting Frames for Freestanding Enclosures



Fabricated from 10-gauge steel, these swing-out rack mounting frames are available for mounting 19 in [483 mm] rack-mounted equipment. Mounting holes are tapped with #10-32 threads spaced per E.I.A. standard.

Frames are painted with white polyester powder.

Note: If used in a two-door enclosure, a center panel support must be ordered.

Shipping Schedule

Same day	1 - 5 days	1 - 7 days	1 - 10 days	1 - 15 days	1 - 20 days
----------	------------	------------	-------------	-------------	-------------

Color indicates shipping lead time in business days.

Mounting Frames	Price	Fits Enclosure HxW	Usable Angle Length "T"	Wt. [lb]
WA7230SOF19	Retired	72 x 30 [1829 x 762]	57.88 [1470]	61
WA7236SOF19	Retired	72x36 [1829x914]	57.88 [1470]	73
WA9036SOF19	Retired	90x36 [2286x914]	75.38 [1915]	87

Note: Dimensions in inches [millimeters].

Rack Mounting Angles for Ultimate Series

Rack mounting angles allow the installation of 19 in [483 mm] rack equipment in 24-inch wide NEMA 412 enclosures. "L" shaped thru-hole angles may be fixed to the enclosure flange, or used in combination with the Adjustable Depth Mounting Kits. Thru-hole diameters are 0.281in [7.14mm]. Brackets are fabricated from 14-gauge galvanized steel. Mounting hardware and two angles are provided.



Note: W1032N clip nuts must be purchased separately.

Rack Mounting Angles	Price	For Enclosure Height in [mm]	Wt. [lb]
HFWRA20C	Retired	20 [508]	3
HFWRA24C	Retired	24 [609]	
HFWRA30C	Retired	30 [762]	
HFWRA36C	Retired	36 [914]	4
HFWRA48C	Retired	48 [1219]	7

Console Rack Angles

Angle brackets for mounting 19 in [483 mm] rack equipment in the WC14B console.



Rack Mounting Angle For Wall-Mounts

Designed for mounting 19 in [483 mm] rack mounted equipment in 24-inch wide NEMA 12, NEMA 4 and NEMA 412 wall-mount enclosures. Small holes are tapped # 10-32. Sealing washers are also provided to maintain original NEMA rating after installation.

Console Rack Angle	Price	Description	Wt. [lb]
WC14R	Retired	Wiegmann enclosure rack angle, white polyester powder finish, for WC14B enclosure. For use on WC series consoles but provides standard rack hole spacing for only WC14B. Includes mounting hardware. Package of 2.	11

Rack Mounting Angle	Price	For Enclosure Height in [mm]	Description	Wt. [lb]
WARAK24	Retired	24 [609]	Enclosure rack mounting angle, white polyester powder finish. Includes mounting hardware. Package of 2.	8
WARAK30	Retired	30 [762]		10
WARAK36	Retired	36 [914]		12

Enclosure Accessories – Rack Mounting



Rack Mounting For Freestanding Enclosures

Type RP Angles

Full or half-length rack angles for installing rack-mounted equipment in freestanding NEMA 12 enclosures

- 10-gauge steel
- If used in two-door enclosures a center panel support must be ordered
- White polyester powder
- Package of 2 angles includes mounting hardware

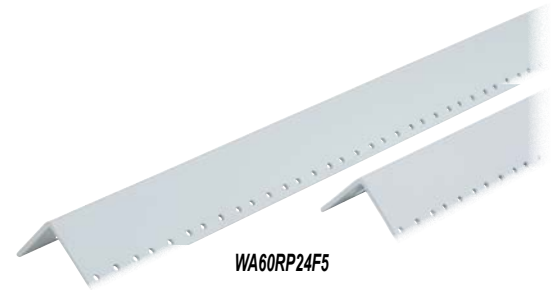
Shipping Schedule

Same day 1 - 5 days 1 - 7 days 1-10 days 1 - 15 days 1 - 20 days

Color indicates shipping lead time in business days.

Rack Mounting Angles	Price	Fits Enclosure Size (HxW) in [mm]	Length	Wt. [lb]
WA60RP24F5	Retired	60x24 [1524X610]	49.00 [1244]	15
WA60RP24F6	Retired		26.25 [667]	8
WA72RP24F5	Retired	90x24 [2286x610]	61.25 [1556]	19
WA72RP24F6	Retired		31.50 [800]	10
WA90RP24F5	Retired	90x24 [228.60x60.96cm]	78.75 [2000]	24
WA90RP24F6	Retired		40.25 [1022]	14

Note: Dimensions in inches [millimeters].



WA60RP24F5

Type RA Channel

U-shaped channel for installing 19 in [483 mm] rack-mounted equipment in all freestanding NEMA 12 and NEMA 4 enclosures:

- Through holes (7/32-inch diameter) are provided and require a W1032N clip nut (must be ordered separately)
- Mounted on unistrut within the enclosure
- Adjustable
- If used in two-door enclosures, a center panel support must be ordered
- White polyester powder finish



WA60RA19TH

Rack Mounting Channel	Price	Fits Enclosure Size (HxW) in [mm]	Length in [mm]	Wt. [lb]
WA60RA19TH	Retired	60 x 24 [1524 x 610]	49.00 [1245]	14
WA72RA19TH	Retired	72 x 24 [1829 x 610]	61.25 [1556]	18
WA90RA19TH	Retired	90 x 24 [2286 x 610]	78.78 [2001]	23

Note: Dimensions in inches [millimeters].