

NEMA 12 Single-Door Wall Mount Flanged Disconnect with Handle SDN12_PL Series



SDN12_PL Series

Enclosure Shipping Schedule			
Same day	1 - 7 days	1 - 10 days	15 days
Color indicates shipping lead time in business days.			

Applications

Designed to house the following:

- **AutomationDirect.com** NEMA 1/12 Flexible shaft handle for Molded Case Circuit Breakers (MCCBs). Series F_S03C flex handle mechanisms are available in four sizes to actuate all AutomationDirect MCCBs from 15 Amps up to 600 Amps. See Circuit Protection section for more information on MCCBs.
- **Allen-Bradley** Bulletin 1494V disconnect switches with flange-mounted variable depth operating mechanisms and Bulletin 1494V flange-mounted variable depth operating mechanisms for circuit breakers *These enclosures will not accept Allen-Bradley Bulletin 1494F disconnect devices or Bulletin 1494D circuit breaker operators.*
- **ABB Controls** flange-mounted variable depth operating mechanisms for disconnect switches and circuit breakers
- **Cutler-Hammer/Westinghouse** Type C361 flange-mounted variable depth operating mechanisms with disconnect switches and Type C371 flange-mounted variable depth operating mechanisms for circuit breakers; also Flex Shaft™ handle mechanisms for circuit breakers
- **Fuji Electric** NEMA 12 flexible shaft handle for Molded Case Circuit Breakers (MCCBs). Series BW9F flex handle mechanisms are available in four sizes to actuate all Fuji Electric MCCBs from 15 Amps to 800 Amps. See the Circuit Protection section for more information on the MCCBs.
- **General Electric** Type STDA flange handles and variable depth operating mechanisms for disconnect switches and circuit breakers; also Spectra Flex™ cable operators for circuit breakers
- **I-T-E** Max-Flex flange-mounted variable depth operating handle for disconnect switches and circuit breakers as well as some fixed depth operators for disconnect switches
- **Square D** Class 9422 disconnect switches with flange-mounted variable depth operating mechanisms or cable Industry Standards mechanisms, and Class 9422 flange-mounted variable depth operating mechanisms or cable mechanisms for circuit breakers
These enclosures will not accept Square D Class 9422 bracket-mounted disconnect devices, Class 9422TG1, or TG2 devices.

Construction

- 1/4 gauge steel bodies and doors
- Plasma welded seams
- Rolled lip around all sides of opening keeps out liquids and contaminants
- Remove doors easily by pulling continuous hinge pin
- Polyurethane poured-in-place gasket
- External mounting feet
- Collar studs for mounting optional subpanel
- Ground stud in door
- Print pocket
- Instructions provided for locating and installing disconnect switches, circuit breakers and operating mechanisms
- Enclosures available with or without padlocking, defeater handle and latching system

Finish

- ANSI 61 gray polyester powder inside and out over phosphatized surfaces
- Optional subpanels are white polyester powder over phosphatized surfaces

Listings

- UL 508, Types 12 & 13, UL File E64791
- CSA Certified, Type 12, CSA File LL66078
- NEMA/EEMAC Types 12 & 13
- JIC EL-1-71



Note:

- Disconnect switch or circuit breakers, operating handle, operating mechanism must be ordered separately.
- **Operator adapter plates are not required with this enclosure series.**
- 4 1/2" Handle and latching hardware are included on models ending in PL.
- Make sure the disconnect device you are using will fit the enclosure size you choose.



NEMA 12 Single-Door Wall Mount Flanged Disconnect SDN12 Series



SDN12 Series

Applications

Designed to house the following:

- **AutomationDirect.com** NEMA 1/12 Flexible shaft handle for Molded Case Circuit Breakers (MCCBs). Series F_S03C flex handle mechanisms are available in four sizes to actuate all AutomationDirect MCCBs from 15 Amps up to 600 Amps. See Circuit Protection section for more information on MCCBs and safety door hardware.
- **Allen-Bradley** Bulletin 1494V disconnect switches with flange-mounted variable depth operating mechanisms and Bulletin 1494V flange-mounted variable depth operating mechanisms for circuit breakers *These enclosures will not accept Allen-Bradley bulletin 1494F disconnect devices or Bulletin 1494D circuit breaker operators.*
- **ABB Controls** flange-mounted variable depth operating mechanisms for disconnect switches and circuit breakers



- **Cutler-Hammer/Westinghouse** Type C361 flange-mounted variable depth operating mechanisms with disconnect switches and Type C371 flange-mounted variable depth operating mechanisms for circuit breakers; also Flex Shaft™ handle mechanisms for circuit breakers
- **Fuji Electric** NEMA 12 flexible shaft handle for Molded Case Circuit Breakers (MCCBs). Series BW9F flex handle mechanisms are available in four sizes to actuate all Fuji Electric MCCBs from 15 Amps to 800 Amps. See the Circuit Protection section for more information on the MCCBs.
- **General Electric** Type STDA flange handles and variable depth operating mechanisms for disconnect switches and circuit breakers; also, Spectra Flex™ cable operators for circuit breakers
- **I-T-E** Max-Flex flange-mounted variable depth operating handle for disconnect switches and circuit breakers as well as some fixed depth operators for disconnect switches
- **Square D** Class 9422 disconnect switches with flange-mounted variable depth operating mechanisms or cable mechanisms and Class 9422 flange-mounted variable depth operating mechanisms or cable mechanisms for circuit breakers *These enclosures will not accept Square D Class 9422 bracket-mounted disconnect devices, Class 9422TG1, or TG2 devices.*
- Remove doors easily by pulling continuous hinge pin
- Polyurethane poured-in-place gasket
- External mounting feet
- Collar studs for mounting optional subpanel
- Grounding provisions provided
- Holes in body and door for mounting operating handle, operating mechanism, and door closing mechanism
- Guide brackets and interlock door catch welded to inside of door
- Cover latch bar for door hardware
- Print pocket
- Enclosures under 40" high require 2-point door hardware
- Enclosures 40" high and larger require 3-point door hardware
- Instructions to locate and install disconnect switches, circuit breakers, and operating mechanisms provided

Finish

- ANSI 61 gray polyester powder inside and out over phosphatized surfaces
- Optional subpanels are white polyester powder over phosphatized surfaces

Listings

- UL 508, Types 12 & 13, UL File E64791
- CSA Certified, Type 12, CSA File LL66078
- * NEMA/EEMAC Types 12 & 13
- JIC EL-1-71

Construction

- 14 gauge steel bodies and doors
- Plasma welded seams
- Rolled lip around all sides of opening keeps out liquids and contaminants

Part Number	Price	Box/Door Gauge	Enclosure Size HxWxD	Subpanel Part Number	Price	Subpanel Size AxB	Stiffener		Latch Type
							Door	Body	
SDN12202108	\$326.00	14/14	20x21x08 (508x543x206)	NP2020	\$31.50	17x17 (432x432)	No	No	2-point
SDN12202110	\$354.00	14/14	20x21x10 (508x543x257)	NP2020	\$31.50	17x17 (432x432)	No	No	
SDN12242108	\$360.00	14/14	24x21x08 (610x543x206)	NP2420	\$42.50	21x17 (533x432)	No	No	
SDN12242110	\$381.00	14/14	24x21x10 (610x543x257)	NP2420	\$42.50	21x17 (533x432)	No	No	
SDN12242508	\$379.00	14/14	24x25x08 (610x645x206)	NP2424	\$44.00	21x21 (533x533)	No	No	
SDN12242510	\$410.00	14/14	24x25x10 (610x645x257)	NP2424	\$44.00	21x21 (533x533)	No	No	
SDN12302108	\$398.00	14/14	30x21x08 (762x543x206)	NP3020	\$56.00	27x17 (686x432)	No	No	
SDN12302110	\$421.00	14/14	30x21x10 (762x543x257)	NP3020	\$56.00	27x17 (686x432)	No	No	
SDN12302508	\$421.00	14/14	30x25x08 (762x645x206)	NP3024	\$54.00	27x21 (686x533)	No	No	
SDN12302510	\$443.00	14/14	30x25x10 (762x645x257)	NP3024	\$54.00	27x21 (686x533)	No	No	
SDN12302612	\$480.00	14/14	30x26x12 (762x645x308)	NP3024	\$54.00	27x21 (686x533)	No	No	
SDN12362508	\$460.00	14/14	36x25x08 (914x645x206)	NP3624	\$71.00	33x21 (838x533)	No	No	
SDN12362510	\$502.00	14/14	36x25x10 (914x645x257)	NP3624	\$71.00	33x21 (838x533)	No	No	
SDN12363108	\$519.00	14/14	36x31x08 (914x797x206)	NP3630	\$93.00	33x27 (838x686)	No	Yes	
SDN12363110	\$548.00	14/14	36x31x10 (914x797x257)	NP3630	\$93.00	33x27 (838x686)	No	Yes	
SDN12363116	\$654.00	14/14	36x31x16 (914x797x410)	NP3630	\$93.00	33x27 (838x686)	No	Yes	
SDN12363212	\$577.00	14/14	36x32x12 (914x797x308)	NP3630	\$93.00	33x27 (838x686)	No	Yes	
SDN12423108	\$567.00	14/14	42x31x08 (1067x797x206)	NP4230	\$118.00	39x27 (991x686)	Yes	Yes	3-point
SDN12423110	\$600.00	14/14	42x31x10 (1067x797x257)	NP4230	\$118.00	39x27 (991x686)	Yes	Yes	
SDN12423212	\$649.00	14/14	42x32x12 (1067x797x308)	NP4230	\$118.00	39x27 (991x686)	Yes	Yes	
SDN12423708	\$653.00	14/14	42x37x08 (1067x949x206)	NP4236	\$141.00	39x33 (991x838)	Yes	Yes	
SDN12423710	\$667.00	14/14	42x37x10 (1067x949x257)	NP4236	\$141.00	39x33 (991x838)	Yes	Yes	
SDN12423812	\$702.00	14/14	42x38x12 (1067x949x308)	NP4236	\$141.00	39x33 (991x838)	Yes	Yes	

Note: Subpanels must be ordered separately. Dimensions in inches (millimeters)

- Company Information
- Terminal Blocks
- Power Distribution Blocks
- Wiring Accessories
- ZIPLink Connection System
- Multi-wire Connectors
- Sensor Cables and Connectors
- M12 Junction Blocks
- Panel Interface Connectors
- Wiring Duct
- Cable Ties
- Wire
- Flexible Cord
- Multi-conductor Flex Cable
- Data Cables
- Wire Management Products
- Power Supplies
- DC Converters
- Transformers and Filters
- Circuit Protection
- Tools
- Test Equipment
- Enclosures
- Enclosure Climate Control
- Safety: Electrical Components
- Safety: Protective Wear
- Terms and Conditions

NEMA 12 Single-Door Wall Mount Flanged Disconnect SDN12 Series



Part Number	Price	Box/Door Gauge	Enclosure Size HxWxD	Subpanel Part Number	Price	Subpanel Size AxB	Stiffener		Latch Type
							Door	Body	
SDN12483708 **	\$711.00	14/14	48x37x08 (1219x949x206)	NP4836	\$156.00	45x33 (1143x838)	Yes	Yes	3-point
SDN12483710 **	\$727.00	14/14	48x37x10 (1219x949x257)	NP4836	\$156.00	45x33 (1143x838)	Yes	Yes	
SDN12483812 **	\$764.00	14/14	48x38x12 (1219x949x308)	NP4836	\$156.00	45x33 (1143x838)	Yes	Yes	
SDN12483816 **	\$839.00	14/14	48x38x16 (1219x949x410)	NP4836	\$156.00	45x33 (1143x838)	Yes	Yes	
SDN12603710 **	\$850.00	14/14	60x37x10 (1524x949x257)	NP6036	\$193.00	57x33 (1448x838)	Yes	Yes	
SDN12603808 **	\$830.00	14/14	60x38x08 (1524x949x207)	NP6036	\$193.00	57x33 (1448x838)	Yes	Yes	
SDN12603812 **	\$891.00	14/14	60x38x12 (1524x949x308)	NP6036	\$193.00	57x33 (1448x838)	Yes	Yes	
SDN12603812A 1**	\$917.00	14/14	60x38x12 (1524x949x308)	NP6036	\$193.00	57x33 (1448x838)	Yes	Yes	
SDN12603816**	\$975.00	14/14	60x38x16 (1524x949x410)	NP6036	\$193.00	57x33 (1448x838)	Yes	Yes	

Note: Subpanels must be ordered separately. Dimensions in inches (millimeters). **These enclosures have a closed-cell neoprene gasket, not poured-in-place.

Note 1: Enclosure catalog number SDN12603812A will receive only 400 amp and 600 amp Allen-Bradley 1494V disconnect switches and I-T-E Siemens 800 amp and 1200 amp circuit breakers. The 400 amp and 600 amp Allen-Bradley disconnect switch will not fit any other size enclosure from the SDN12 family. Blank Adapter plates will not fit catalog number SDN12603812A.

Note 2: Enclosures 12" and 16" deep can be modified to accept I-T-E Siemens 800 amp and 1200 amp circuit breakers. (When using an I-T-E Siemens circuit breaker and an enclosure with an "H" dimension of 30", 36" or 42", verify the amount of wire bend space required for both the line and load sides.)

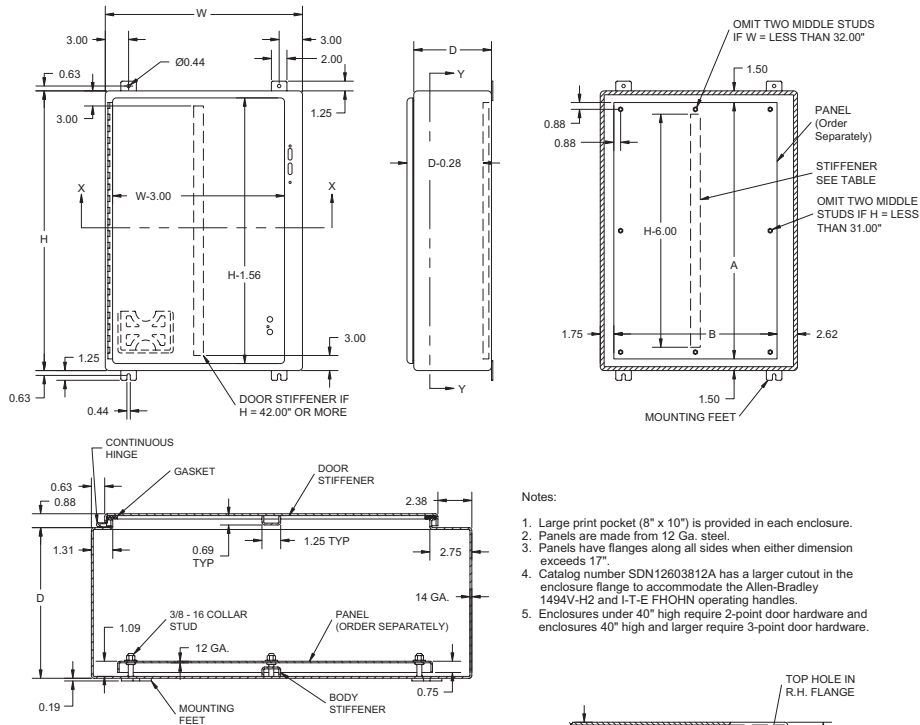
Note: • Disconnect switch or circuit breakers, operating handle, operating mechanism, and door hardware must be ordered separately.

• Operator adapter plates are not required with this enclosure series.

• Make sure the disconnect device you are using will fit the enclosure size you choose.

Enclosure Shipping Schedule			
Same day	1 - 7 days	1 - 10 days	15 days
Color indicates shipping lead time in business days.			

Dimensions

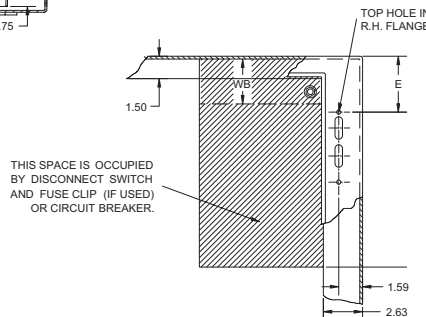


Notes:

1. Large print pocket (8" x 10") is provided in each enclosure.
2. Panels are made from 12 Ga. steel.
3. Panels have flanges along all sides when either dimension exceeds 17".
4. Catalog number SDN12603812A has a larger cutout in the enclosure flange to accommodate the Allen-Bradley 1494V-H2 and I-T-E FHOHN operating handles.
5. Enclosures under 40" high require 2-point door hardware and enclosures 40" high and larger require 3-point door hardware.

Note:
 E = 4.75 when D = 8.00
 E = 7.09 when D = 10.00
 E = 11.62 when D = 12.00 or 16.00
 E = 18.38 for SDN12603812A
 WB = Wiring Space

Refer to National Electrical Code 1996 article 430-10(b) for wiring space required for line side conductors to be connected to disconnect. Verify your application to determine if wiring space is adequate.



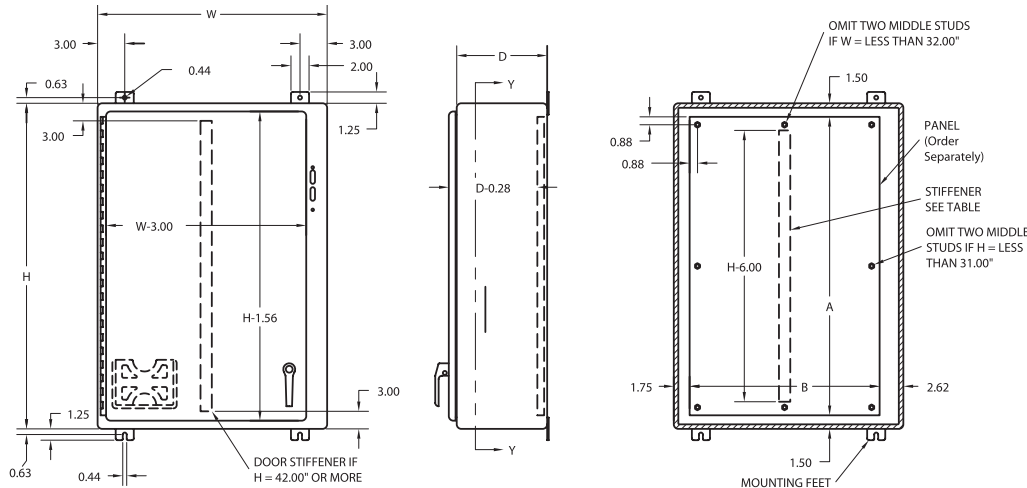
NEMA 12 Single-Door Wall Mount Flanged Disconnect with Handle SDN12 PL Series

Part Number	Price	Box/Door Gauge	Enclosure Size HxWxD	Subpanel Part Number	Price	Subpanel Size AxB	Stiffener	
							Door	Body
SDN12202108PL	\$371.00	14/14	20x21x08 (508x543x206)	NP2020	\$31.50	17x17 (432x432)	No	No
SDN12202110PL	\$388.00	14/14	20x21x10 (508x543x257)	NP2020	\$31.50	17x17 (432x432)	No	No
SDN12242108PL	\$394.00	14/14	24x21x08 (610x543x206)	NP2420	\$42.50	21x17 (533x432)	No	No
SDN12242110PL	\$411.00	14/14	24x21x10 (610x543x257)	NP2420	\$42.50	21x17 (533x432)	No	No
SDN12242508PL	\$420.00	14/14	24x25x08 (610x645x206)	NP2424	\$44.00	21x21 (533x533)	No	No
SDN12242510PL	\$439.00	14/14	24x25x10 (610x645x257)	NP2424	\$44.00	21x21 (533x533)	No	No
SDN12302108PL	\$428.00	14/14	30x21x08 (762x543x206)	NP3020	\$56.00	27x17 (686x432)	No	No
SDN12302110PL	\$448.00	14/14	30x21x10 (762x543x257)	NP3020	\$56.00	27x17 (686x432)	No	No
SDN12302508PL	\$459.00	14/14	30x25x08 (762x645x206)	NP3024	\$54.00	27x21 (686x533)	No	No
SDN12302510PL	\$480.00	14/14	30x25x10 (762x645x257)	NP3024	\$54.00	27x21 (686x533)	No	No
SDN12302612PL	\$502.00	14/14	30x26x12 (762x645x308)	NP3024	\$54.00	27x21 (686x533)	No	No
SDN12362508PL	\$482.00	14/14	36x25x08 (914x645x206)	NP3624	\$71.00	33x21 (838x533)	No	No
SDN12362510PL	\$521.00	14/14	36x25x10 (914x645x257)	NP3624	\$71.00	33x21 (838x533)	No	No
SDN12363108PL	\$550.00	14/14	36x31x08 (914x797x206)	NP3630	\$93.00	33x27 (838x686)	No	Yes
SDN12363110PL	\$577.00	14/14	36x31x10 (914x797x257)	NP3630	\$93.00	33x27 (838x686)	No	Yes
SDN12363116PL	\$658.00	14/14	36x31x16 (914x797x410)	NP3630	\$93.00	33x27 (838x686)	No	Yes
SDN12363212PL	\$603.00	14/14	36x32x12 (914x797x308)	NP3630	\$93.00	33x27 (838x686)	No	Yes
SDN12423108PL	\$596.00	14/14	42x31x08 (1067x797x206)	NP4230	\$118.00	39x27 (991x686)	Yes	Yes
SDN12423110PL	\$624.00	14/14	42x31x10 (1067x797x257)	NP4230	\$118.00	39x27 (991x686)	Yes	Yes
SDN12423212PL	\$655.00	14/14	42x32x12 (1067x797x308)	NP4230	\$118.00	39x27 (991x686)	Yes	Yes
SDN12423708PL	\$657.00	14/14	42x37x08 (1067x949x206)	NP4236	\$141.00	39x33 (991x838)	Yes	Yes
SDN12423710PL	\$688.00	14/14	42x37x10 (1067x949x257)	NP4236	\$141.00	39x33 (991x838)	Yes	Yes
SDN12423812PL	\$720.00	14/14	42x38x12 (1067x949x308)	NP4236	\$141.00	39x33 (991x838)	Yes	Yes
SDN12483708PL **	\$711.00	14/14	48x37x08 (1219x949x206)	NP4836	\$156.00	45x33 (1143x838)	Yes	Yes
SDN12483710PL **	\$744.00	14/14	48x37x10 (1219x949x257)	NP4836	\$156.00	45x33 (1143x838)	Yes	Yes
SDN12483812PL **	\$780.00	14/14	48x38x12 (1219x949x308)	NP4836	\$156.00	45x33 (1143x838)	Yes	Yes
SDN12483816PL **	\$848.00	14/14	48x38x16 (1219x949x410)	NP4836	\$156.00	45x33 (1143x838)	Yes	Yes
SDN12603710PL **	\$858.00	14/14	60x37x10 (1524x949x257)	NP6036	\$193.00	57x33 (1448x838)	Yes	Yes
SDN12603808PL **	\$817.00	14/14	60x38x08 (1524x949x207)	NP6036	\$193.00	57x33 (1448x838)	Yes	Yes
SDN12603812PL **	\$895.00	14/14	60x38x12 (1524x949x308)	NP6036	\$193.00	57x33 (1448x838)	Yes	Yes
SDN12603816PL **	\$973.00	14/14	60x38x16 (1524x949x410)	NP6036	\$193.00	57x33 (1448x838)	Yes	Yes

Note: Subpanels must be ordered separately. Dimensions in inches (millimeters). **These enclosures have a closed-cell neoprene gasket, not poured-in-place.

Note: Enclosures 12" and 16" deep can be modified to accept I-T-E Siemens 800 amp and 1200 amp circuit breakers. (When using an I-T-E Siemens circuit breaker and an enclosure with an "H" dimension of 30", 36" or 42", verify the amount of wire bend space required for both the line and load sides.)

Dimensions



Notes:

1. Large print pocket (8" x 10") is provided in each enclosure.
2. Panels are made from 12 Ga. steel.
3. Panels have flanges along all sides when either dimension exceeds 17".
4. Enclosures under 40" high have 2-point door hardware and enclosures 40" high and larger have 3-point door hardware.
5. The handle includes a zinc diecast padlocking defeater handle and all latching hardware is installed on disconnect enclosures ending in PL. Order separately for other disconnect enclosures.

Company Information

Terminal Blocks

Power Distribution Blocks

Wiring Accessories

ZIPLink Connection System

Multi-wire Connectors

Sensor Cables and Connectors

M12 Junction Blocks

Panel Interface Connectors

Wiring Duct

Cable Ties

Wire

Flexible Cord

Multi-conductor Flex Cable

Data Cables

Wire Management Products

Power Supplies

DC Converters

Transformers and Filters

Circuit Protection

Tools

Test Equipment

Enclosures

Enclosure Control

Safety: Electrical Components

Safety: Protective Wear

Terms and Conditions

Enclosures Subpanels



Enclosures for Electrical/Electronic Equipment

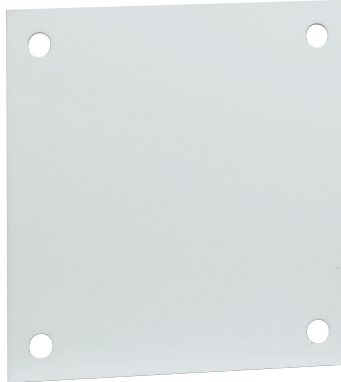
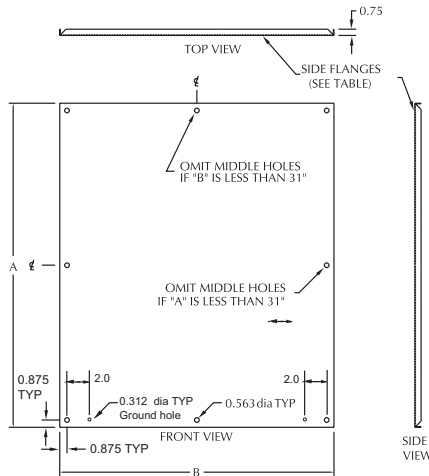
Subpanels for NEMA 1, 12, 4 and 4X wall mount enclosures and WC9 NEMA 12 operator consoles

- 12 gauge steel
- Subpanels with any side over 17" have 3/4" flange on all sides
- Subpanels are painted white polyester powder

Panels listed fit the following enclosures:

- NEMA 1 large (NIC)
- NEMA 12 large (JIC)
- NEMA 12 single door wall mount
- NEMA 12 two door wall mount
- NEMA 12 single door flush wall mount
- NEMA 4 (N) and 4X (SSN) single door wall mount
- NEMA 12 operator consoles (WC9)

NOTE: Use NPxxxx subpanels in NEMA 1, NEMA 4 and 4X, and NEMA 12 enclosures only. Do NOT use NPxxxx subpanels in NEMA 4/12 enclosures with a C suffix.



Enclosure Shipping Schedule		
Same day	1 - 7 days	1 - 10 days
Color indicates shipping lead time in business days		

Part Number	Price	Enclosure Size HxW	Subpanel Size AxB
NP1212	\$15.00	12x12 (305x305)	9x9 (229x229)
NP1224	\$29.50	12x24 (305x610)	9x21 (229x533)
NP1612	\$19.00	16x12 (406x305)	13x9 (330x229)
NP1616	\$24.50	16x16 (406x406)	13x13 (330x330)
NP2012	\$28.00	20x12 (508x305)	17x9 (432x229)
NP2016	\$24.50	20x16 (508x406)	17x13 (432x330)
NP2020	\$31.50	20x20 (508x508)	17x17 (432x432)
NP2412	Use NP1224		21x9 (533x229)
NP2416	\$35.50	24x16 (610x406)	21x13 (533x330)
NP2420	\$42.50	24x20 (610x508)	21x17 (533x432)
NP2424	\$44.00	24x24 (610x610)	21x21 (533x533)
NP3016	\$46.50	30x16 (762x406)	27x13 (686x330)
NP3020	\$56.00	30x20 (762x508)	27x17 (686x432)
NP3024	\$54.00	30x24 (762x610)	27x21 (686x533)
NP3030	\$92.00	30x30 (762x762)	27x27 (686x686)
NP3624	\$71.00	36x24 (914x610)	33x21 (838x533)
NP3630	\$93.00	36x30 (914x762)	33x27 (838x686)
NP3636	\$109.00	36x36 (914x914)	33x33 (838x838)
NP4024	\$93.00	40x24 (1016x610)	37x21 (940x533)
NP4224	\$89.00	42x24 (1067x610)	39x21 (991x533)
NP4230	\$118.00	42x30 (1067x762)	39x27 (991x686)
NP4236	\$141.00	42x36 (1067x914)	39x33 (991x838)
NP4824	\$102.00	48x24 (1219x610)	45x21 (1143x533)
NP4830	\$133.00	48x30 (1219x762)	45x27 (1143x686)
NP4836	\$156.00	48x36 (1219x914)	45x33 (1143x838)
NP6030	\$165.00	60x30 (1527x762)	57x27 (1448x686)
NP6036	\$193.00	60x36 (1527x914)	57x33 (1448x838)
NP7230	\$189.00	72x30 (1832x762)	69x27 (1753x686)
NP7236	\$231.00	72x36 (1832x914)	69x33 (1753x838)

Note: Dimensions in inches (millimeters); letters in table correspond to letters on dimensional drawing.

Company Information

Terminal Blocks

Power Distribution Blocks

Wiring Accessories

ZIPLink Connection System

Multi-wire Connectors

Sensor Cables and Connectors

M12 Junction Blocks

Panel Interface Connectors

Wiring Duct

Cable Ties

Wire

Flexible Cord

Multi-conductor Flex Cable

Data Cables

Wire Management Products

Power Supplies

DC Converters

Transformers and Filters

Circuit Protection

Tools

Test Equipment

Enclosures

Enclosure Climate Control

Safety: Electrical Components

Safety: Protective Wear

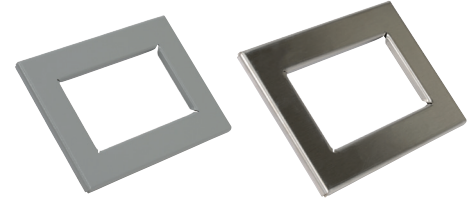
Terms and Conditions

Enclosure Accessories - Window Kits



Window Kits

Window kits are easily installed by making a cutout in the enclosure and attaching the window and frame in place. All necessary hardware is included. Kits are fully gasketed to maintain a NEMA 12/ NEMA 13 oil-tight seal.



WAPWK0503NF

WAPWK0503SS

Enclosure Shipping Schedule
1 -10 days
Color indicates shipping lead time in business days.

Window Kit	Price	Description	Material	Window Size in [mm]	Frame Size in [mm]	Required Cutout Size in [mm]	Weight [lb]
WAPWK0503NF	\$103.00	Hubbell-Wiegmann enclosure window kit, 5 x 3 inch Makrolon polycarbonate window, 7.5 x 5.5 inch frame, ANSI 61 gray powder coat finish. For indoor use on NEMA 12 enclosures. Includes integral closed-cell gasket and mounting hardware.	Steel	5.00x3.00 [127x76]	7.50x5.50 [191x140]	6.69x4.69 [170x119]	2.2
WAPWK0503SS	\$167.00	Hubbell-Wiegmann enclosure window kit, 5 x 3 inch Makrolon polycarbonate window, 7.5 x 5.5 inch frame, 304 stainless steel with grained finish. For indoor use on NEMA 12 and NEMA 13 enclosures. Includes integral closed-cell gasket and mounting hardware.	Stainless Steel				
WAPWK0905NF	\$125.00	Hubbell-Wiegmann enclosure window kit, 9 x 5.5 inch Makrolon polycarbonate window, 11.5 x 8 inch frame, ANSI 61 gray powder coat finish. For indoor use on NEMA 12 enclosures. Includes integral closed-cell gasket and mounting hardware.	Steel	9.00x5.50 [229x140]	11.50x8.00 [292x203]	10.69x7.19 [272x183]	3.1
WAPWK0905SS	\$201.00	Hubbell-Wiegmann enclosure window kit, 9 x 5.5 inch Makrolon polycarbonate window, 11.5 x 8 inch frame, 304 stainless steel with grained finish. For indoor use on NEMA 12 and NEMA 13 enclosures. Includes integral closed-cell gasket and mounting hardware.	Stainless Steel				
WAPWK1308NF	\$158.00	Hubbell-Wiegmann enclosure window kit, 13 x 8 inch Makrolon polycarbonate window, 15.5 x 10.5 inch frame, ANSI 61 gray powder coat finish. For indoor use on NEMA 12 enclosures. Includes integral closed-cell gasket and mounting hardware.	Steel	13.00x8.00 [330x203]	15.50x10.50 [394x267]	14.69x9.69 [373x170]	4.4
WAPWK1308SS	\$255.00	Hubbell-Wiegmann enclosure window kit, 13 x 8 inch Makrolon polycarbonate window, 15.5 x 10.5 inch frame, 304 stainless steel with grained finish. For indoor use on NEMA 12 and NEMA 13 enclosures. Includes integral closed-cell gasket and mounting hardware.	Stainless Steel				
WAPWK1705NF	\$142.00	Hubbell-Wiegmann enclosure window kit, 17 x 5.5 inch Makrolon polycarbonate window, 19.5 x 8 inch frame, ANSI 61 gray powder coat finish. For indoor use on NEMA 12 enclosures. Includes integral closed-cell gasket and mounting hardware.	Steel	17.00x5.50 [432x140]	19.50x8.00 [495x203]	18.69x7.19 [475x183]	6.8
WAPWK1711NF	\$217.00	Hubbell-Wiegmann enclosure window kit, 17 x 11 inch Makrolon polycarbonate window, 19.5 x 13.5 inch frame, ANSI 61 gray powder coat finish. For indoor use on NEMA 12 enclosures. Includes integral closed-cell gasket and mounting hardware.	Steel	17.00x11.00 [432x279]	19.50x13.50 [495x343]	18.69x12.69 [475x322]	
WAPWK1711SS	\$336.00	Hubbell-Wiegmann enclosure window kit, 17 x 11 inch Makrolon polycarbonate window, 19.5 x 13.5 inch frame, 304 stainless steel with grained finish. For indoor use on NEMA 12 and NEMA 13 enclosures. Includes integral closed-cell gasket and mounting hardware.	Stainless Steel				8.2
WAPWK2315NF	\$269.00	Hubbell-Wiegmann enclosure window kit, 23 x 15 inch Makrolon polycarbonate window, 25.5 x 17.5 inch frame, ANSI 61 gray powder coat finish. For indoor use on NEMA 12 enclosures. Includes integral closed-cell gasket and mounting hardware.	Steel	23.00x15.00 [584x381]	25.50x17.50 [648x445]	24.69x16.69 [627x424]	
WAPWK2315SS	\$434.00	Hubbell-Wiegmann enclosure window kit, 23 x 15 inch Makrolon polycarbonate window, 25.5 x 17.5 inch frame, 304 stainless steel with grained finish. For indoor use on NEMA 12 and NEMA 13 enclosures. Includes integral closed-cell gasket and mounting hardware.	Stainless Steel				10.9
WAPWK2919NF	\$399.00	Hubbell-Wiegmann enclosure window kit, 29 x 19 inch Makrolon polycarbonate window, 31.5 x 21.5 inch frame, ANSI 61 gray powder coat finish. For indoor use on NEMA 12 enclosures. Includes integral closed-cell gasket and mounting hardware.	Steel	29.00x19.00 [737x483]	31.50x21.50 [800x546]	30.69x20.69 [780x526]	
WAPWK3523NF	\$527.00	Hubbell-Wiegmann enclosure window kit, 35 x 23 inch Makrolon polycarbonate window, 37.5 x 25.5 inch frame, ANSI 61 gray powder coat finish. For indoor use on NEMA 12 enclosures. Includes integral closed-cell gasket and mounting hardware.	Steel	35.00x23.00 [889x584]	37.50x25.50 [953x648]	36.69x24.69 [932x627]	