

XRI® 4N1 General Purpose, 3-Phase, Totally Enclosed Motors

C-Face Footed (Rigid and Removable Base)



marathon[®]
Motors

Features

- Meets or exceeds all NEMA Premium efficiencies, except as noted
 - Ball bearings, mechanically locked on shaft end
 - 1.15 Service factor, except as noted
 - Class F insulation, except as noted
 - Rated 60/50 hertz, 190/380 or 380 volt, at next lower horsepower, as noted
 - Rolled steel 56-145T frame motors except brake kits. See Accessories section.
 - UL recognized, CSA certified and CE mark
- 4N1 Motor features include:
- CR200 corona-resistant magnet wire
 - Bolt-on, removable rigid base
 - Suitable for horizontal and vertical mounting
 - Will accept drip cover kits (available from Marathon)

Applications

Typical uses include machine tools, conveyors, packaging machines, batching machines, food and beverage equipment, pumps and fans.

Motor Shipping Schedule *

Same or one day * **Up to 7 days** Up to 10 days

Color indicates shipping lead time in business days. Check stock status online.

* Certain heavy and oversized items can be shipped only via LTL. Check our website for current shipping method constraints by part number.

Motor Specifications – XRI 4N1 General Purpose, 3-Phase, Totally Enclosed Motors

Part Number*	Price	HP	Base RPM	Volts	Encl.	NEMA Design	NEMA Frame	Model No.	F.L. Amps	Weight (lb)*	Footnotes
D390		1/3	3600	208-230 / 460	TENV	B	56C	056T34T5303	1.6-1.8 / 0.9	20	4N1 Motor NOT NEMA Premium
G580		1/3	1800	208-230 / 460				056T17T5305	1.8-1.6 / 0.8	20	
K703		1/3	1800	575				056T17T5316	0.64	20	
D391		1/2	3600	208-230 / 460	TEFC			056T34F5301	2-2.2/1.1	22	
K704		1/2	3600	575				056T34F5348	0.9	22	
G581		1/2	1800	208-230 / 460				056T17F5321	2.3-2.4/1.2	24	
K705		1/2	1800	575				056T17F5336	0.95	23	
D392		3/4	3600	208-230 / 460				056T34F5302	3-3.2 / 1.6	23	
K706		3/4	3600	575				056T34F5349	1.3	23	
G582		3/4	1800	208-230 / 460				056T17F5322	2.9-3 / 1.5	40	
K707		3/4	1800	575				056T17F5337	1.2	24	

* Refer to the Motor Shipping Schedule table for shipping information.
 Certain heavy and oversized items can be shipped only via LTL. Check our website for current shipping method constraints by part number.
 Footnotes: The following part numbers are 4N1 motors; they are NOT NEMA Premium: D390, G580, K703, D391, K704, G581, K705, D392, K706, G582, and K707.
 Notes: Please review the AutomationDirect Terms & Conditions for warranty and service on this product. Warranty service can be arranged through numerous Marathon Electric service centers. See list of service centers on our website at www.automationdirect.com.
 (table continued next page)

XRI® 4N1 General Purpose, 3-Phase, Totally Enclosed Motors

C-Face Footed (Rigid and Removable Base)

(table continued from previous page)

Motor Specifications – XRI 4N1 General Purpose, 3-Phase, Totally Enclosed Motors													
Part Number*	Price	HP	Base RPM	Volts	Encl.	NEMA Design	NEMA Frame	Model No.	F.L. Amps	Weight (lb)*	Footnotes		
D393A		1	3600	230 / 460**	TEFC	B	56C	056T34F99008	3.0-1.5	26	**Motors rated 230/460 are suitable for 208V @ 60Hz 4N1 Motor		
K708A		1	3600	575	TEFC	B	56C	056T34F99010	1.2	24			
G583A		1	1800	230 / 460**			56HC	056T17F15639	3.3 / 1.65	42			
K709A		1	1800	575			56HC	056T17F15642	1.3	42			
D394A		1-1/2	3600	230 / 460			56C	056T34F99017	3.15	48			
K721A		1-1/2	3600	575			56C	056T34F99020	1.6	37			
G584A		1-1/2	1800	230 / 460**			56HC	056T17F15641	4.6 / 2.3	45			
K722A		1-1/2	1800	575			56HC	056T17F15645	1.85	45			
D395A		2	3600	230 / 460**			56HC	056T34F99012	5 / 2.5	45			
K723A		2	3600	575			56HC	056T34F99015	2.0	48			
G585A		2	1800	230 / 460**			56HC	056T17F15640	6.0/3.0	48			
K724A		2	1800	575			56HC	056T17F15644	2.4	48			
D396A		3	3600	230 / 460**			TEFC	A	56HC	056T34F99014		7.6 / 3.8	52
K725A		3	3600	575					56HC	056T34F15593		3.05	46
G590A		3	1800	230 / 460					182TC	182TTFW16045		7.8 / 3.9	83
C382B		3	1800	230 / 460**					182TC	182TTFW16030		7.8 / 3.9	75
C383B		3	1800	575					182TC	182TTFW16027		3.2	75
C385B		5	3600	230 / 460**					184TC	184TTFW16006		12.0/6.0	85
C386B		5	1800	230 / 460					184TC	184TTFW16027		12.6 / 6.3	87
C387B		5	1800	575					184TC	184TTFW16029		5.1	87
C389B		7-1/2	3600	208-230 / 460					213TCV	213TTFW16008		19.7-18.6/9.3	100
C390B		7-1/2	1800	208-230 / 460	213TC	213TTFW16035			20.8-19.6/9.8	146			
C391B		7-1/2	1800	575	213TCV	213TTFW16036			7.9	157			
C392B		10	3600	208-230 / 460	215TC	215TTFW16005			25.9-23.6 / 11.8	139			
C393B		10	1800	208-230 / 460	215TC	215TTFW16041	28-26.4/13.2	189					

* Refer to the Motor Shipping Schedule table for shipping information.
 Certain heavy and oversized items can be shipped only via LTL. Check our website for current shipping method constraints by part number.
 Footnotes: The following part numbers are 4N1 motors; they are NOT NEMA Premium: D390, G580, K703, D391, K704, G581, K705, D392, K706, G582, and K707.
 Notes: Please review the AutomationDirect Terms & Conditions for warranty and service on this product. Warranty service can be arranged through numerous Marathon Electric service centers. See list of service centers on our website at www.automationdirect.com.

XRI® 4N1 General Purpose, 3-Phase, Totally Enclosed Motors

C-Face Footed (Rigid and Removable Base)

Performance Data - XRI 4N1 General Purpose, 3-Phase, Totally Enclosed Motors											
Part Number	HP	F.L. RPM	Current (Amps)			Torque (lb-ft)			F.L. Effic. %	F.L. Power Factor	Rotor Inertia (lb-ft ²)
			No Load	Full Load	Locked Rotor	Full Load	Locked Rotor	Break-down			
D390	1/3	3450	0.7	0.9	8.0	0.5	2.5	3.8	65	56	0.022
G580	1/3	1725	0.5	0.8	5.0	1.0	4.3	5.3	68	61.9	0.04
K703	1/3	1725	0.4	0.64	4.0	1.0	4.3	5.3	68	61.9	0.04
D391	1/2	3450	0.7	1.1	8.0	0.76	3.0	3.8	66	69.7	0.02
K704	1/2	3450	0.5	0.9	6.4	0.76	3.0	3.8	66	69.7	0.02
G581	1/2	1725	0.9	1.2	7.0	1.5	6.2	7.2	72	53	0.05
K705	1/2	1725	0.7	0.95	5.6	1.5	6.2	7.2	72.1	53.3	0.05
D392	3/4	3450	1	1.6	11.5	1.14	4.0	5.6	74	69.1	0.023
K706	3/4	3450	0.8	1.3	9.2	1.14	4.0	5.6	74	69.1	0.023
G582	3/4	1725	1	1.5	9.8	2.28	8.2	10	75.5	66.3	0.07
K707	3/4	1725	0.8	1.2	7.8	2.28	8.2	10	75.5	66.3	0.07
D393A	1	3485	0.75	1.5	1.50	1.50	3.2	4.8	78.5	79.1	0.02
K708A	1	3450	0.6	1.2	8.0	1.50	3.2	4.8	78.5	79.1	0.023
G583A	1	1725	1.15	1.65	17	3.0	13.7	16.8	85.5	68	0.12
K709A	1	1725	0.9	1.3	13.6	3.0	13.7	16.8	85.5	68	0.12
D394A	1-1/2	3515	0.9	1.5	19.4	2.20	7.3	9.6	84	83.5	0.05
K721A	1-1/2	3450	0.7	1.6	15.5	2.2	7.3	9.6	84	83.5	0.045
G548A	1-1/2	1725	1.5	2.3	24	4.5	21.2	26	86.5	71	0.14
K722A	1-1/2	1725	1.2	1.85	19.2	4.5	21.2	26	86.5	71	0.14
D395A	2	3500	1.0	2.5	21.7	3.0	9.5	12.2	85.5	86	0.07
K723A	2	3450	0.8	2.0	17.4	3.0	9.5	12.2	85.5	86	0.065
G585A	2	1725	1.9	3.0	30.5	6.0	24.5	33.2	86.5	71	0.14
K724A	2	1725	1.5	2.4	24.4	6.0	24.5	33.2	86.5	71	0.14
D396A	3	3450	1.7	3.8	36.9	4.5	17.29	22.7	87.5	84	0.045
K725A	3	3450	1.4	3.05	29.5	4.5	17.29	22.7	87.5	84	0.045
G590A	3	1770	1.9	3.9	33.5	8.9	22.5	36	89.5	80.5	0.38
C382B	3	1770	1.9	3.9	33.5	8.9	22.5	36	89.5	80.5	0.38
C383B	3	1760	1.5	3.2	27	8.9	22	35.2	89.5	80.5	0.38
C385B	5	3495	1.7	6.0	46	7.5	16	26	89.5	89.3	0.3
C386B	5	1760	2.4	6.3	49	14.9	30.1	50.2	88.5	83	0.485
C387B	5	1760	1.92	5.1	39.2	14.9	30.1	50.2	89.5	83.1	0.485
C389B	7-1/2	3525	4.1	9.3	63	11.2	19.3	33	89.5	84.6	0.55
C390B	7-1/2	1765	4.9	9.8	67.5	22.3	52.9	75	91.7	78.3	0.85
C391B	7-1/2	1765	3.9	7.9	54.0	22.3	52.9	75	91.7	78.3	0.85
C392B	10	3525	4.4	11.8	79.5	14.9	27.7	47.1	90.2	87.9	0.55
C393B	10	1760	7.2	13.2	81	29.9	76	90	91.7	77.5	1.1

XRI® 4N1 General Purpose, 3-Phase, Totally Enclosed Motors

C-Face Footed (Rigid and Removable Base)

Dimensions

in [mm]

Figure 1 - Part #: D390, G580, K703

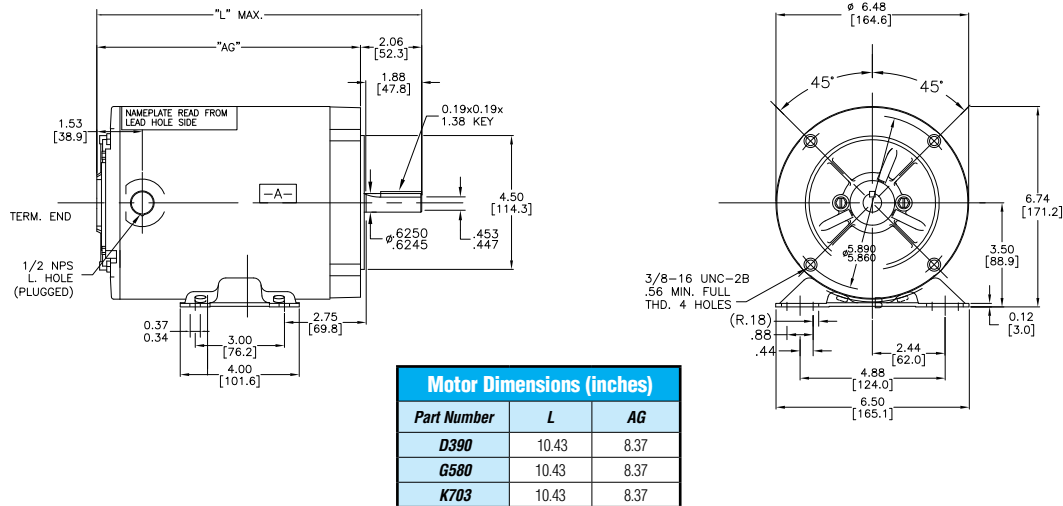
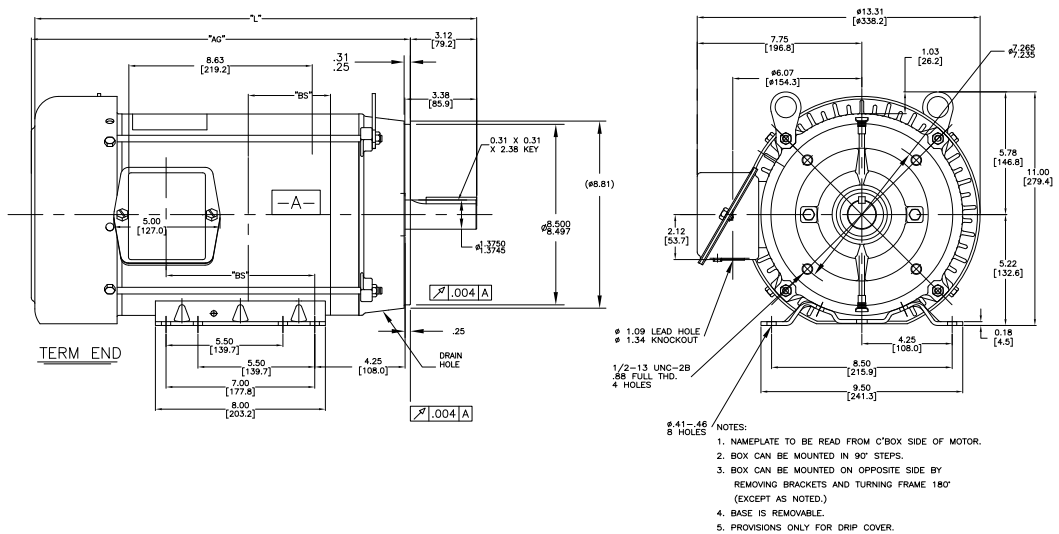


Figure 2 - Part #: C389B, C390B, C391B, C392B, C393B



Motor Dimensions (inches)			
Part Number	L	AG	BS
C389B	19.47	16.36	5.43
C390B	19.47	18.35	5.43
C391B	19.47	18.35	5.43
C392B	20.97	17.85	6.93
C393B	20.97	17.85	6.93

See our website: www.AutomationDirect.com for complete engineering drawings.

XRI® 4N1 General Purpose, 3-Phase, Totally Enclosed Motors

C-Face Footed (Rigid and Removable Base)

Dimensions

in [mm]

See our website: www.AutomationDirect.com for complete engineering drawings.

Figure 3 – G590A, C382B, C383B, C385B, C386B, C387B

Motor Dimensions (inches)		
Part Number	L	AD
G590A	14.47	4.87
C382B	14.47	4.87
C383B	14.97	5.37
C385B	14.97	5.37
C386B	14.97	5.37
C387B	14.97	5.37

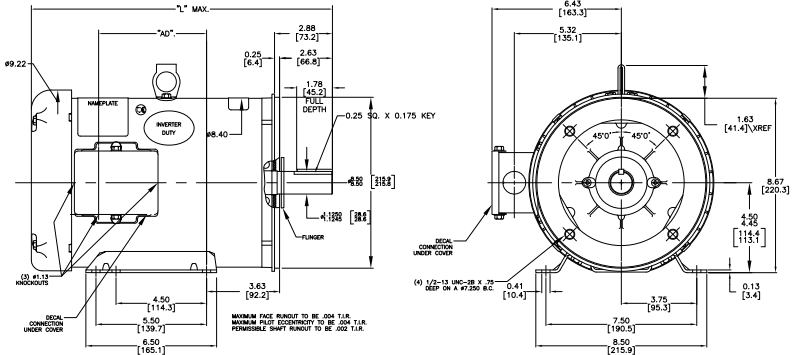
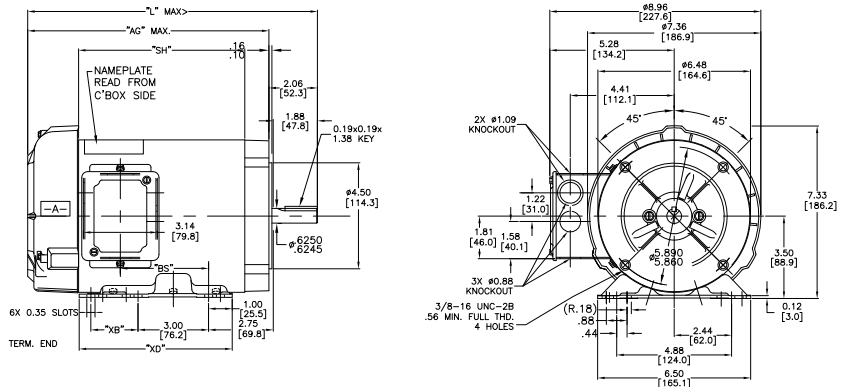


Figure 4 -

- D391, K704,
- G581, K705,
- D392, K706,
- G582, K707,
- D393A, K708A,
- G583A, K709A,
- D394A, K721A,
- G584A, K722A,
- D395A, K723A,
- G585A, K724A,
- D396A, K725A



Motor Dimensions (inches)						
Part Number	L	AG	SH	BS	XB	XD
D391	11.81	9.75	N/A	3.25	N/A*	4.0
K704	11.81	9.75	N/A	3.25	N/A*	4.0
G581	11.81	9.75	N/A	3.25	N/A*	4.0
K705	11.81	9.75	N/A	3.25	N/A*	4.0
D392	11.81	9.75	N/A	3.25	N/A*	4.0
K706	11.81	9.75	N/A	3.25	N/A*	4.0
G582	11.81	9.75	N/A	3.25	N/A*	4.0
K707	11.81	9.75	N/A	3.25	N/A*	4.0
D393A	11.81	9.75	N/A	3.25	N/A*	4.0
K708A	11.81	9.75	N/A	3.25	N/A*	4.0
G583A	14.15	12.09	8.65	4.95	2.00	6.50
K709A	14.15	12.09	8.65	5.25	2.00	6.50
D394A	13.31	11.25	N/A	4.75	N/A*	4.0
K721A	13.31	11.25	N/A*	4.75	N/A*	4.0
G584A	14.65	12.59	9.15	5.75	2.00	6.50
K722A	14.65	12.59	9.15	5.75	2.00	6.50
D395A	14.81	12.75	N/A	5.75	2.00	6.50
K723A	14.81	12.75	N/A	5.75	2.00	6.50
G585A	15.15	13.09	9.65	6.25	2.00	6.50
K724A	15.15	13.09	9.65	6.25	2.00	6.50
D396A	14.81	12.75	N/A	5.75	2.00	6.50
K725A	14.81	12.75	N/A	5.75	2.00	6.50

*4-Hole Foot, "XB" Does Not Apply