

NEMA Premium[®] Efficiency XRI[®] Series Inverter Duty Motors



Features

- Meets or exceeds NEMA Premium efficiencies
- Inverter duty
- Suitable for use with ALS (across-the-line starting) or IGBT (AC drive)
- 10:1 variable torque and constant torque on VFD with 1.0 service factor
- 1.15 service factor on sinewave; 1.0 service factor on IGBT power
- Class F insulation
- Continuous duty at 40° C ambient
- Rolled steel construction with C-face rigid base mounting
- F3 conduit box location
- Utilizes ball bearings
- Electrically reversible
- UL Recognized, CSA Certified, and CE Mark
- Three-year warranty (through Marathon Electric)

Applications

- Typical uses include gear reducers, pumps, machine tools, and other direct-coupled equipment installed in damp, dusty, or dirty environments where long life and ultra-high efficiency is desired.

Motor Shipping Schedule *

Same or one day * Up to 7 days Up to 10 days

Color indicates shipping lead time in business days. Check stock status online.

* Certain heavy and oversized items can be shipped only via LTL. Check our website for current shipping method constraints by part number.

208–230/460V Motor Specifications

Part Number*	Price	HP	Base RPM	Volts	Enclosure	NEMA Frame	Model No.	F.L. Amps	Weight (lb)*	Drawing Links
E2000		1	3600	208–230 / 460	TEFC	56C	056T34F5940	3.0–2.8 / 1.4	28	PDF
E2001A			1800			143TC	143TTFR16053	3.3–3.3 / 1.65	48	PDF
E2002		1200	145TC			145TTFR6078	3.8–3.8 / 1.9	42	PDF	
E2004A		1-1/2	1800			145TC	145TTFR16331	4.7–4.6 / 2.3	50	PDF
E2007A		2	1800			145TC	145TTFR16329	6.2–6.0 / 3.0	65	PDF

* Refer to the Motor Shipping Schedule table for shipping information.

Certain heavy and oversized items can be shipped only via LTL. Check our web site for current shipping method constraints by part number.

† These specifications are for the Marathon motor currently being sold. Marathon manufactured a previous version of this Part Number (that had a different model #), and that version had some different specifications. For detailed information on the previous motor, please refer to the “Previous Marathon Model Numbers” table on the next page, or click on the previous motor’s specification at www.AutomationDirect.com/Retired-Products.

Notes: Please review the AutomationDirect Terms & Conditions for warranty and service on this product.

Warranty service can be arranged through numerous Marathon Electric service centers.

See list of service centers on our Web site at www.automationdirect.com.

NEMA Premium[®] Efficiency XRI[®] Series Inverter Duty Motors

Performance Data

Performance Data (460 Volt)															
Part Number	HP	NEMA Design	F.L. RPM	Min RPM	Current (Amps)			Torque (lb-ft)			Max CHP RPM*	Max Safe RPM	F.L. Effic. (%)	F.L. Power Factor	Rotor Inertia (lb-ft ²)
					No Load	Full Load	Locked Rotor	Full Load	Locked Rotor	Break-down					
<u>E2000</u>	1	B	3490	349	0.7	1.4	10	1.5	3.6	5.1	5235	7200	80	84	0.04
<u>E2001A</u>		A	1765	177	1.2	1.7	17	3.0	13.7	16.8	1765	4000	85.5	68	0.12
<u>E2002</u>				1170	117	1.3	1.9	10	4.5	13.5	15.8	1755	5400	82.5	60
<u>E2004A</u>	1-1/2	B	1755	176	1.5	2.3	24	4.5	21.2	26	1755	4000	86.5	71	0.14
<u>E2007A</u>	2		1760	176	1.9	3.0	30.5	6.0	24.5	33.2	1760	4000	86.5	71	0.14

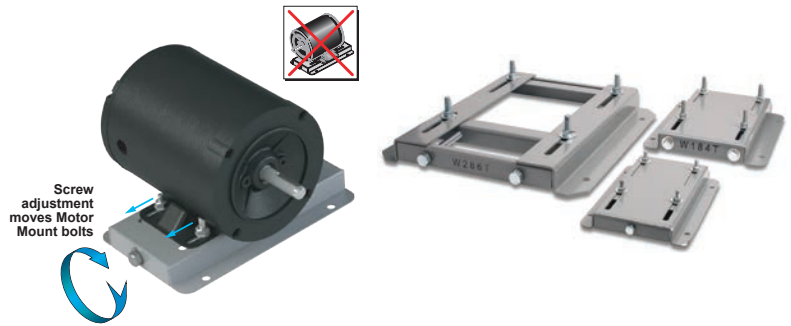
* Maximum Constant HP RPM is for direct coupled loads.

† These specifications are for the Marathon motor currently being sold. Marathon manufactured a previous version of this Part Number (that had a different model #), and that version had some different specifications. For detailed information on the previous motor, please refer to the "Previous Marathon Model Numbers" table below, or click on the previous motor's specification at www.AutomationDirect.com/Retired-Products.

STABLE™ Motor Slide Bases

Mounting Slide Bases for 56 to 449T NEMA Motors Features

- Allows adjustment of motor mounting position
- Slide direction is perpendicular to motor shaft
- Double adjusting screws for frames 182T-449T
- Manufactured to precise dimensional standards
- Dimensionally interchangeable with existing major makes
- Heavy-duty steel construction
- Painted with oven-baked primer for better adhesion of customer's paint
- All "D" bolts (motor mounting bolts) are fixed to the exact motor foot pattern
- All "D" bolts are welded into position to prevent spinning and dropping from slots
- Nuts and washers are provided for securing the motor to the slide base



STABLE Motor Slide Bases for 3-Phase Motors

Part Number (MTA-BASE-xxx)	Price	Fits Frame Type	Product Wt. (lb)	Fits Motor					Drawing Links				
				IronHorse	Leeson®	WEG (Part number ending in...)	Marathon						
					WashGuard®		microMAX, Max +, Black Max, Blue Max, SyMAX	XRI GP & NEMA Premium, Jet Pump		Globetrotter			
W56		56*	2.8	MTPM-P3x-1x18									
				MTPM-P5x-1x18									
				MTPM-P7x-1x18									
				MTPM-0xx-1x18									
				MTPM-1xx-1x18									
				MTR(2)(P)-xxx-xxxxx*									
				MTRJ(P)-xxx-xxxxx									
				MTSN-P33-3BD18									
				MTSN-P33-3BD18R									
				MTSN-P33-3BD36	112427.00								
				MTSP-P33-3BD18	112428.00								
				MTSP-P33-3BD18R	112429.00								
				MTSP-P33-3BD36	112430.00								
				MTSP-P33-3BD36R	113019.00								
				MTSN-P50-3BD18	113023.00								
				MTSN-P50-3BD18R	113473.00								
				MTSN-P50-3BD36	113586.00								
				MTSP-P50-3BD12	113590.00								
				MTSP-P50-3BD18	113591.00								
				MTSP-P50-3BD18R	113649.00								
				MTSP-P50-3BD36	116644.00								
				MTSP-P50-3BD36R	116645.00								
				MTSN-P75-3BD18	119468.00								
				MTSN-P75-3BD18R	119469.00								
				MTSN-P75-3BD36	119471.00								
				MTSP-P75-3BD12	119475.00								
				MTSP-P75-3BD18	119476.00								
				MTSP-P75-3BD18R	119478.00								
				MTSP-P75-3BD36	119480.00								
				MTSP-P75-3BD36R	119482.00								
				MTSN-001-3BD18	119483.00								
				MTSN-001-3BD18R	191202.00								
				MTSN-001-3BD36	191204.00								
				MTSP-001-3BD18	191205.00								
				MTSP-001-3BD18R	191206.00								
				MTSP-001-3BD36	191207.00								
				MTSP-001-3BD36R	191208.00								
				MTSN-1P5-3BD18	191560.00								
				MTSN-1P5-3BD18R	191561.00								
				MTSN-1P5-3BD36	191562.00								
				MTSP-1P5-3BD18	191563.00								
				MTSP-1P5-3BD18R	191564.00								
				MTSP-1P5-3BD36	191569.00								
				MTSP-1P5-3BD36R									
				MTSN-002-3BD18									
				MTSN-002-3BD18R									
				MTSN-002-3BD36									
				MTSP-002-3BD18									
				MTSP-002-3BD18R									
				MTSP-002-3BD36									
MTSP-002-3BD36R													

* IronHorse MTR2 56HC motors have double-punched bases to fit on slide base MTA-BASE-W56.

STABLE™ Motor Slide Bases

STABLE Motor Slide Bases for 3-Phase Motors										
Part Number (MTA-BASE-xxx)	Price	Fits Frame Type	Product Wt. (lb)	Fits Motor						Drawing Links
				IronHorse	Leeson®	WEG (Part number ending in...)	Marathon			
					WashGuard®		microMAX, Max+, Black Max, Blue Max, SyMAX	XRI GP & NEMA Premium, Jet Pump	Globetrotter	
<u>W143T</u>		143T/TC	4.6	MTCP2-001-3BD18(C) MTCP2-1P5-3BD36 MTSN-1P5-3BD36-14 MTSP-1P5-3BD36-14 MTSP-1P5-3BD36R-14	191487.00 191565.00		Y536(-A772)	E2001A	-	PDF
<u>W145T</u>		145T/TC	5.1	MTCP2-001-3BD12 MTCP2-1P5-3BD18(C) MTCP2-002-3BD18(C) MTCP2-002-3BD36 MTSP-001-3BD12 MTSN-1P5-3BD18-14 MTSN-1P5-3BD18R-14 MTSP-1P5-3BD18-14 MTSP-1P5-3BD18R-14 MTSN-002-3BD18-14 MTSN-002-3BD18R-14 MTSN-002-3BD36-14 MTSP-002-3BD18-14 MTSP-002-3BD18R-14 MTSP-002-3BD36-14 MTSP-002-3BD36R-14	121866.00 121868.00 121870.00 122182.00 122184.00 122185.00 191490.00 191491.00 191570.00	(...)145T-S (...)145TC-S	Y366 Y368 Y284 Y285 Y537 Y538(-A772) Y551(-A772)	E2002 E2004A E2007A	-	PDF
<u>W182T</u>		182T/TC	9.2	MTCP2-1P5-3BD12 MTCP2-003-3BD18(C) MTCP2-003-3BD36 MTSP-1P5-3BD12 MTSN-003-3BD18-18 MTSN-003-3BD36-18 MTSP-003-3BD18-18 MTSP-003-3BD36-18	132196.00 132198.00		Y1999 Y286A Y541A(-A772)	-	GT0010A GT1010A	PDF
<u>W184T</u>		184T/TC	10	MTCP2-002-3BD12 MTCP2-005-3BD18(C) MTCP2-005-3BD36 MTF-00x-1C18 MTSP-002-3BD12 MTSP-005-3BD18 MTSP-005-3BD36	132197.00 132200.00 132201.00 132440.00		Y1372 Y540(-A772) Y543A(-A772) SY067	-	GT0013A GT1013A GT1210A GT1212A GT1213A	PDF
<u>W213T</u>		213T/TC	13	MTCP2-003-3BD12 MTCP2-7P5-3BD18(C) MTCP2-7P5-3BD36 MTSP-003-3BD12 MTSP-7P5-3BD18	140819.00 140822.00 141266.00		Y994 Y542(-A772) Y545(-A772) SY068	-	GT0016A GT1016A GT1216A	PDF
<u>W215T</u>		215T/TC	15	MTCP2-005-3BD12 MTCP2-010-3BD18(C) MTCP2-010-3BD36 MTSP-005-3BD12 MTSP-010-3BD18	140820.00 140821.00		Y996 Y544(-A772) Y547(-A772) SY069	-	GT0019A GT1019A GT1218A GT1219A	PDF
<u>W254T</u>		254T/TC	18	MTCP2-7P5-3BD12 MTCP2-015-3BD18(C) MTCP2-015-3BD36 MTSP-015-3BD18	-		Y546(-A772) Y549(-A772)	-	GT0059 GT1022A GT1222A	PDF
<u>W256T</u>		256T/TC	19	MTCP2-010-3BD12 MTCP2-020-3BD18(C) MTCP2-020-3BD36 MTSP-020-3BD18	-		Y548(-A772)	-	GT0062 GT1025A GT1225A	PDF
<u>W284T</u>		284T/TC	20	MTCP2-015-3BD12 MTCP2-025-3BD18(C)	-		-	-	GT0065 GT1028A	PDF
<u>W286T</u>		286T/TC	21	MTCP2-020-3BD12 MTCP2-030-3BD18(C)	-		-	-	GT0067 GT1031A	PDF

* IronHorse MTR2 56HC motors have double-punched bases to fit on slide base [MTA-BASE-W56](#).

STABLE™ Motor Slide Bases

STABLE Motor Slide Bases for 3-Phase Motors										
Part Number (MTA-BASE- xxx)	Price	Fits Frame Type	Product Wt. (lb)	Fits Motor						Drawing Links
				IronHorse	Leeson®	WEG (Part number ending in...)	Marathon			
					WashGuard®		microMAX, Max+, Black Max, Blue Max, SyMAX	XRI GP & NEMA Premium, Jet Pump	Globetrotter	
W324T		324T/ TC	30	MTCP2-040-3BD18(C)	-		Y571(-A774) Y513(-A775)	-	GT0073 GT1034A	PDF
W326T		326T/ TC	31	MTCP2-050-3BD18(C)	-		Y572(-A774) Y514(-A775)	-	GT0077 GT1037A	PDF
W364T		364T/ TC	43	MTCP2-060-3BD18(C)	-		Y573(-A774) Y515(-A775)	-	GT1040A	PDF
W365T		365T/ TC	43	MTCP2-075-3BD18(C)	-		Y574(-A774) Y516(-A775)	-	GT1043A	PDF
W404T		404T/ TC	58	-	-		-	-	-	PDF
W405T		405T/ TC	60	MTCP2-100-3BD18(C)	-		Y575(-A774) Y517(-A775)	-	GT1046A	PDF
W444T		444T	63	MTCP2-125-3BD18	-		-	-	-	PDF
W445T		445T	65	MTCP2-150-3BD18	-		-	-	-	PDF
W447T		447T	89	MTCP2-200-3BD18	-		-	-	-	PDF
W449T		449T	94	MTCP2-250-3D18 MTCP2-300-3D18	-		-	-	-	PDF

* IronHorse MTR2 56HC motors have double-punched bases to fit on slide base [MTA-BASE-W56](#).

STABLE™ Motor Slide Bases

Mounting Slide Bases for 56 to 215T NEMA Motors Features

STABLE Motor Slide Bases for 1-phase Motors									
Part Number	Price	Fits Frame Type	Product Wt. (lb)	Fits Motor					
				IronHorse	Leeson®	Marathon			
					Washguard®	Marathon DP GP (NEMA Service Factor)	Marathon DP Air Compressor	Fan & Blower	Marathon TE GP 4-in-1
MTA-BASE-W56		56*	2.8	MTR2-xxx-1AB18 MTR2-xxx-1AB36 MTPM-xxx-1L18 MTPM-xxx-1M18	112431.00	G915A C167A C187A E261A E268A	D010	C216	G570
	112527.00				C1153			D311	
	112528.00				C1155			G571	
	112529.00				B319			D312	
	113583.00				D118			G572	
	114311.00				C1158			D313	
	114313.00				C235			G573	
	114317.00				D115			D314	
	191475.00				C1160			G574	
	191477.00				C1161			D315	
	191479.00				B352			G575	
								D316	
	MTA-BASE-W143T							143T / TC	4.6
MTA-BASE-W145T		145TC / TC	5.1	-	-	I127	-	-	-
MTA-BASE-W182T		182T / TC	9.2	-	-	-	-	-	-
MTA-BASE-W184T		184 / TC	10	MTF-00x-1C18	-	-	-	-	-
MTA-BASE-W213T		213T / TC	13	-	-	-	-	-	-
MTA-BASE-W215T		215T T TC	15	-	-	-	-	-	-

* IronHorse MTR2 56HC motors have double-punched bases to fit on slide base [MTA-BASE-W56](#).