

# General Purpose, Single-Phase (NEMA Service Factor) Drip-proof Motors



*Rigid Base*



*C-Face Footed (Rigid Base)*



## Rigid Base and C-Face Footed (Rigid Base)

### Rigid Base Features

- Heavy gauge steel frame and base
- Ball bearings (except as noted)
- Economical capacitor start designs
- Service factor, as noted
- UL recognized and CSA certified

### C-Face Footed (Rigid Base) Features

- Ball bearings, mechanically locked on shaft end
- NEMA service factors
- Heavy gauge steel frame and base
- Capacitor start, capacitor run design for higher efficiency
- UL recognized and CSA certified

### Applications

- Typical uses include machine tools, conveyors, packaging machines, batching machines, food and beverage equipment, pumps, and fans

#### Motor Shipping Schedule \*

Same or one day \*

Up to 7 days

Up to 10 days

Color indicates shipping lead time in business days. Check stock status online.

\* Certain heavy and oversized items can be shipped only via LTL. Check our website for current shipping method constraints by part number.

# General Purpose, Single-Phase (NEMA Service Factor) Drip-proof Motors

Rigid Base

Motor Specifications – General Purpose, Single Phase (NEMA Service Factor), Rigid Base, Drip-proof Motors											
Part Number*	Price	HP	Base RPM	Volts	Service Factor	Encl.	NEMA Design	NEMA Frame	Model No.	Weight (lb)*	Notes
<a href="#">4354</a>		1/4	1800	115	1.35	DP	N/A**	48	5KH39QN9538	13	–
<a href="#">4362</a>			1800	115			N/A**	48	5KH39QN9686X	13	Auto Overload
<a href="#">C147A</a>			1800	115 / 230			N	48	048B17D11005	17	Suitable for 208VAC @ 60Hz
<a href="#">C158A</a>		1/3	1800	115 / 230	1.35 @ 60Hz 1.0 @ 50Hz		N	56	056B17D11019	21	
<a href="#">G1098A</a>		1/2	3600	115 / 230	1.25		N	48	048B34D11003	20	
<a href="#">C167A</a>			1800	115 / 230			N	56	056B17D11018	23	
<a href="#">G915A</a>		3/4	3600	115 / 230			N	56	056B34D11019	25	
<a href="#">C175A</a>			1800	115 / 230			B	56	056B17D15545	42	
<a href="#">C179A</a>		1	3600	115 / 230			B	56	056B34D11014	30	
<a href="#">C188A</a>		1	1800	115 / 208-230			B	143T	143C17DRR40001A1	31	–
<a href="#">G937A</a>		1-1/2	3600	115 / 230	1.15		N	56	056B34D11012	35	Suitable for 208VAC @ 60Hz
<a href="#">C191</a>		1-1/2	1800	115 / 208-230			N/A**	145T	5KCR49SN0065	35	N/A**
<a href="#">C185A</a>		1-1/2	1800	115 / 230		B	56H	056B17D15548	45	Suitable for 208VAC @ 60Hz	
<a href="#">C187A</a>		2	3600	115 / 230		N/A**	56	056B34D11011	38	Suitable for 208VAC @ 60Hz	
<a href="#">C193A</a>		2	1800	115 / 230		N/A**	56HZ***	056B17D15555	50	Suitable for 208VAC @ 60Hz	
<a href="#">I127</a>		2	1800	115 / 208-230		L	145T	145TBDR5337	48	Manual Overload	
<a href="#">C194</a>		3	3600	115 / 230		N/A**	145T	5KCR48TN8062	38	N/A**	
<a href="#">I113A</a>		3	1800	115 / 208-230		N	184T	184TCDW7026	78		

\* Refer to the Motor Shipping Schedule table for shipping information.  
 Certain heavy and oversized items can be shipped only via LTL. Check our website for current shipping method constraints by part number.  
 \*\* Data not available from manufacturer.  
 \*\*\* Base of 56HZ frame motors has holes and slots to match NEMA 56, 56H, 143T, and 145T mounting dimensions.  
 Note: Please review the AutomationDirect Terms & Conditions for warranty and service for this product. Warranty service can be arranged through numerous Marathon Electric service centers. See list of service centers on our website at [www.automationdirect.com](http://www.automationdirect.com)

# General Purpose, Single-Phase (NEMA Service Factor) Drip-proof Motors

## C-Face Footed (Rigid Base)

Motor Specifications – General Purpose, Single Phase (NEMA Service Factor), C-Face Footed (Rigid Base), Drip-proof Motors											
Part Number*	Price	HP	Base RPM	Volts	Service Factor	Encl.	NEMA Design	NEMA Frame	Model No.	Weight (lb)*	Notes
<b>E261A</b>		1/2	1800	100 - 120 / 200 - 240	1.25	DP	N/A**	56C	056B17D11029	25	Auto Overload
<b>E268A</b>		3/4		100 - 120 / 200 - 240						056B17DRR70008A1	35
<b>EG277A</b>		1		100 / 240 & 100 - 120 / 200 - 240	1.15		N		056B17DRR70019A1	35	Manual Overload

\* Refer to the Motor Shipping Schedule table for shipping information.  
 Certain heavy and oversized items can be shipped only via LTL. Check our website for current shipping method constraints by part number.  
 \*\*Data not available from manufacturer.  
 Note: Please review the AutomationDirect Terms & Conditions for warranty and service for this product. Warranty service can be arranged through numerous Marathon Electric service centers. See list of service centers on our website at [www.automationdirect.com](http://www.automationdirect.com)

# General Purpose, Single-Phase (NEMA Service Factor) Drip-proof Motors

Rigid Base

## Performance Data - General Purpose, Single-Phase (NEMA Service Factor) Drip-proof Motors

Part Number	HP	F.L. RPM	Current @ 115V/230V (Amps)			Torque (lb-ft)			F.L. Effic. %	F.L. Power Factor	Rotor Inertia (lb-ft <sup>2</sup> )
			No Load 230V	Full Load 115/230V	Locked Rotor	Full Load	Locked Rotor	Break-down			
<a href="#">4354</a>	1/4	1725	4.54	5.1	30.2 / 15.1	0.75	1.20	2.02	57.5	59.5	0.0546
<a href="#">4362</a>	1/4	1725	4.54	5.1	30.2 / 15.1	0.75	1.20	2.02	52.5	59.5	0.0546
<a href="#">C147A</a>	1/4	1745	0.5	2.4 / 1.2	21.4 / 10.7	0.75	2.54	1.94	68.5	92.7	0.0413
<a href="#">C158A</a>	1/3	1725	1.2	3.8 / 1.9	28.4 / 14.2	1.00	3.63	2.72	72.4	79	0.0497
<a href="#">G1098A</a>	1/2	3450	0.6	4.4 / 2.2	42.3 / 21.2	0.76	2.08	2.13	72.4	98	0.0218
<a href="#">C167A</a>	1/2	1725	0.9	4.6 / 2.3	35.4 / 17.7	1.53	4.73	3.78	76.2	91.6	0.0609
<a href="#">E261A</a>	1/2	1725	0.9	4.4 / 2.2	33.9 / 17	24.4	75.6	60.4	76.2	91.6	0.0609
<a href="#">G915A</a>	3/4	3450	1.4	7.2 / 3.6	57.5 / 28.8	1.14	3.38	3.19	76.2	89.2	0.0255
<a href="#">C175A</a>	3/4	1725	1.0	6.0 / 3.3	61.2 / 30.6	3.00	9.50	8.27	81.8	97.2	0.0748
<a href="#">E268A</a>	3/4	1725	1.3	8.8 / 4.4	60.4 / 30.2	2.28	8.61	7.24	81.8	88	0.0309
<a href="#">C179A</a>	1	3450	0.9	8.8 / 4.4	50 / 25	1.50	3.6	4.5	80.4	99	0.0321
<a href="#">C188A</a>	1	1725	4.7	13.4 / 6.7	77.1 / 38.6	3.01	9.14	7.58	72	67.8	0.0884
<a href="#">EG277A</a>	1	1725	1.1	8.8 / 4.4	68.4 / 34.2	3.00	8.94	7.99	82.6	96	0.0309
<a href="#">G937A</a>	1-1/2	3450	2.7	13.6 / 6.8	112 / 56	2.25	4.56	8.25	81.5	93.4	0.0369
<a href="#">C191</a>	1-1/2	1725	6.0	18.2 / 9.1	50.6	4.53	11.99	11.60	72	76.5	0.1015
<a href="#">C185A</a>	1-1/2	1725	1.7	12.6 / 6.3	97.4 / 48.7	4.50	13.13	11.88	82.5	94.3	0.1491
<a href="#">C187A</a>	2	3450	3.2	17.8 / 8.9	84.6 / 42.3	2.22	4.67	4.94	82.9	91.9	0.0394
<a href="#">C193A</a>	2	1725	3.7	17.6 / 8.8	130 / 65	6.00	17.63	17.94	84.5	90.2	0.1696
<a href="#">I127</a>	2	1740	3.9	18.8 / 9.4	127 / 63.5	6.02	15.90	14.90	81.5	86.1	0.1546
<a href="#">C194</a>	3	3450	8.4	29.4 / 14.7	181.2 / 90.6	4.50	8.2	10.9	77	82	0.0530
<a href="#">I113A</a>	3	1745	19.4/9.7	34 / 16.8	181.2 / 90.6	9.00	24.60	18.40	75.5	76	0.3625

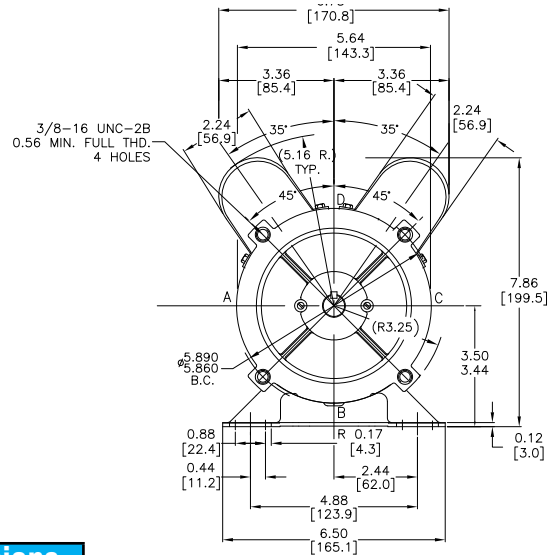
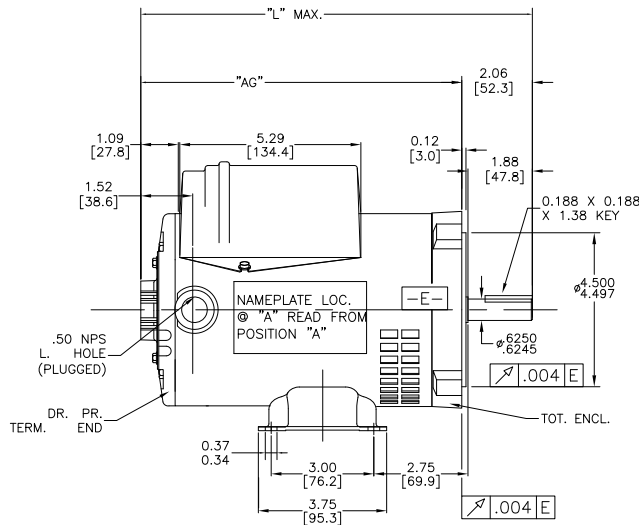
\* Maximum Constant HP RPM is for direct-coupled loads.

# General Purpose, Single-Phase (NEMA Service Factor) Drip-proof Motors

## C-Face Footed (Rigid Base)

**Dimensions**  
in [mm]

**Figure 1 – E261A**



Motor Dimensions (inches)		
Part Number	L	AG
E261A	11.44	9.38

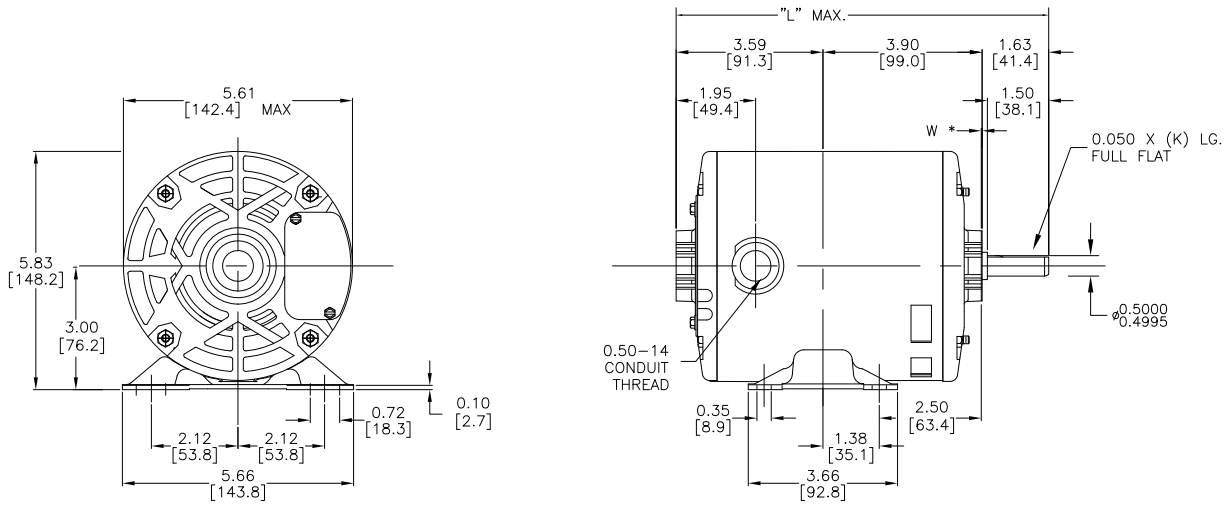
See our website: [www.AutomationDirect.com](http://www.AutomationDirect.com) for complete engineering drawings.

# General Purpose, Single-Phase (NEMA Service Factor) Drip-proof Motors

Rigid Base

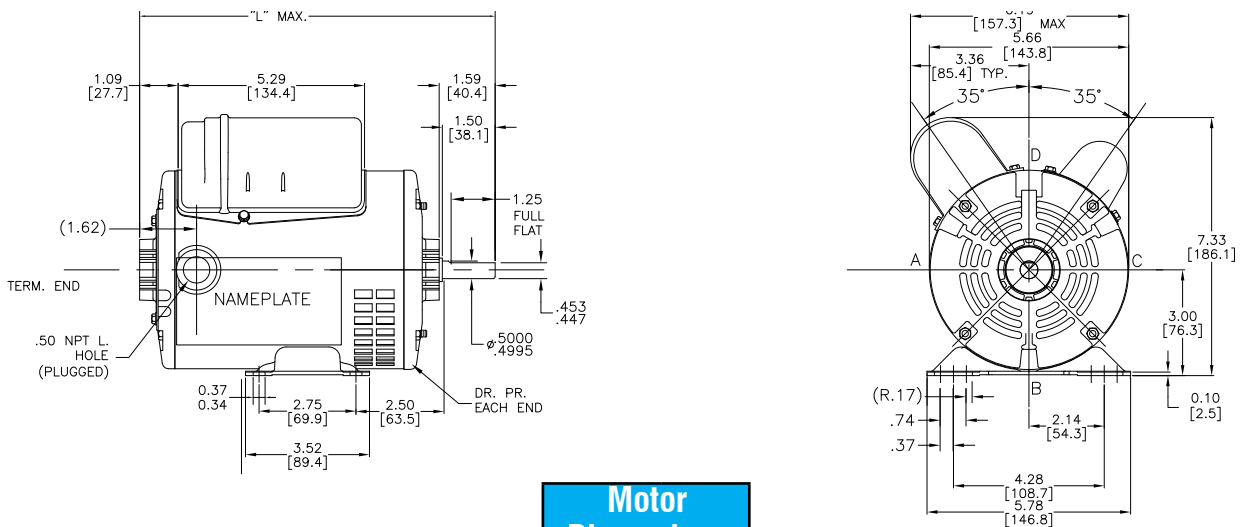
**Dimensions**  
in [mm]

**Figure 2 – 4354, 4362**



Motor Dimensions (inches)	
Part Number	L
4354	8.94
4362	8.94

**Figure 3 – C147A, G1098A**



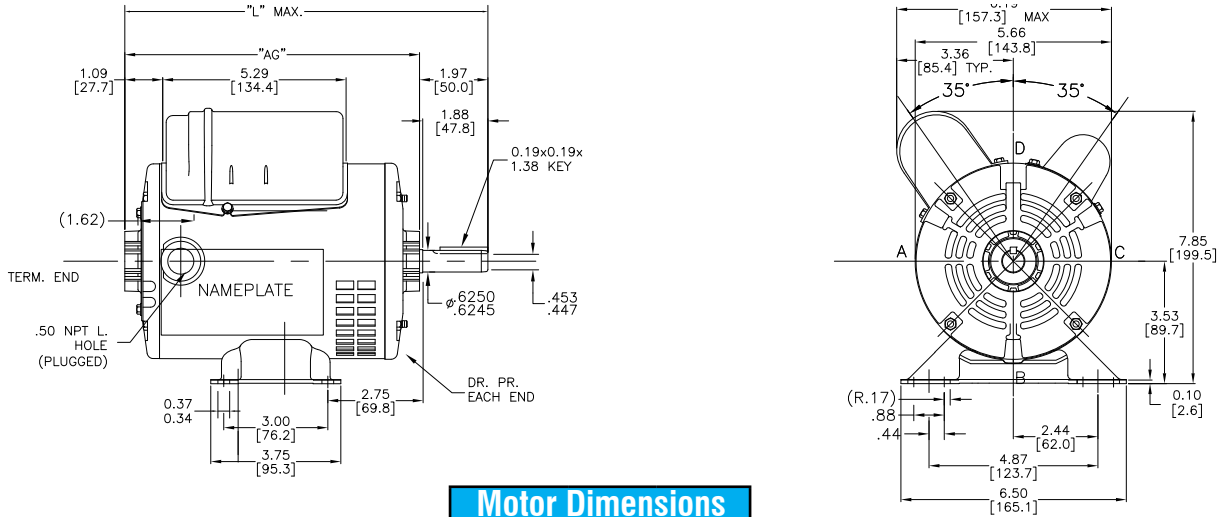
Motor Dimensions (inches)	
Part Number	L
C147A	10.34
G1098	10.59

# General Purpose, Single-Phase (NEMA Service Factor) Drip-proof Motors

**Dimensions**  
in [mm]

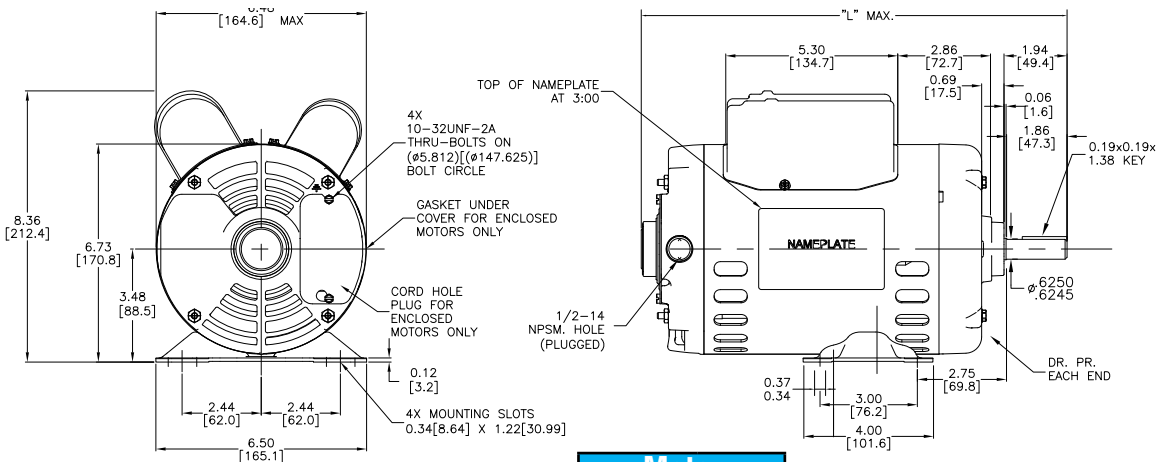
**Rigid Base**

**Figure 4 – C158A, C167A, G915A**



Motor Dimensions (inches)		
Part Number	L	AG
C158A	10.72	8.75
C167A	11.47	9.50
C915A	11.47	9.50

**Figure 5 – C175A, C179A, C185A, C187A, G937A**



Motor Dimensions (inches)	
Part Number	L
C175A	13.13
C179A	12.33
C185A	13.65
C187A	12.94
C937A	12.75

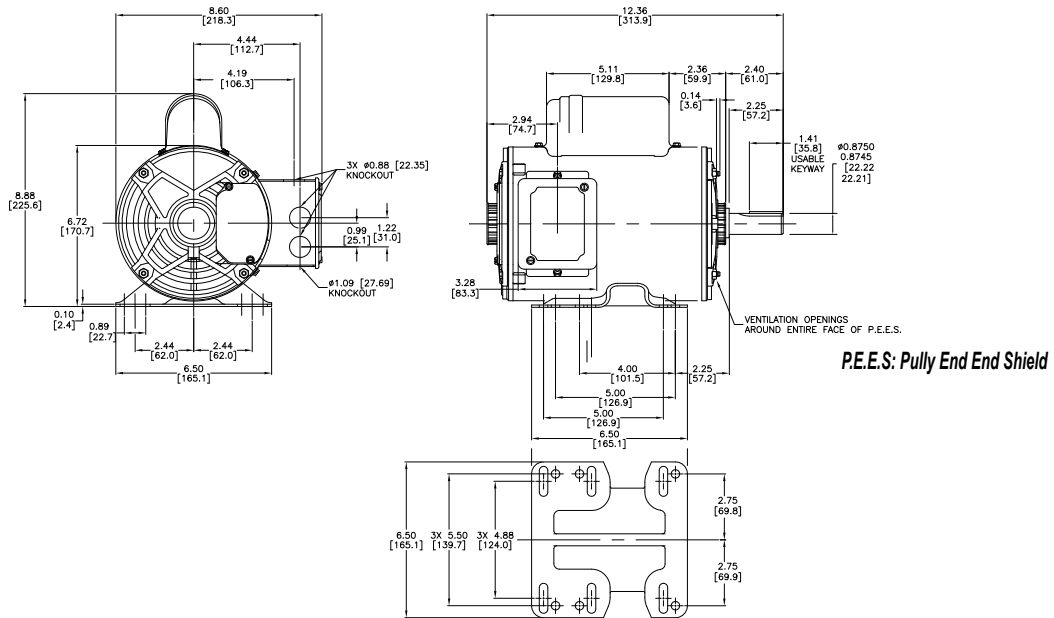
See our website: [www.AutomationDirect.com](http://www.AutomationDirect.com) for complete engineering drawings.

# General Purpose, Single-Phase (NEMA Service Factor) Drip-proof Motors

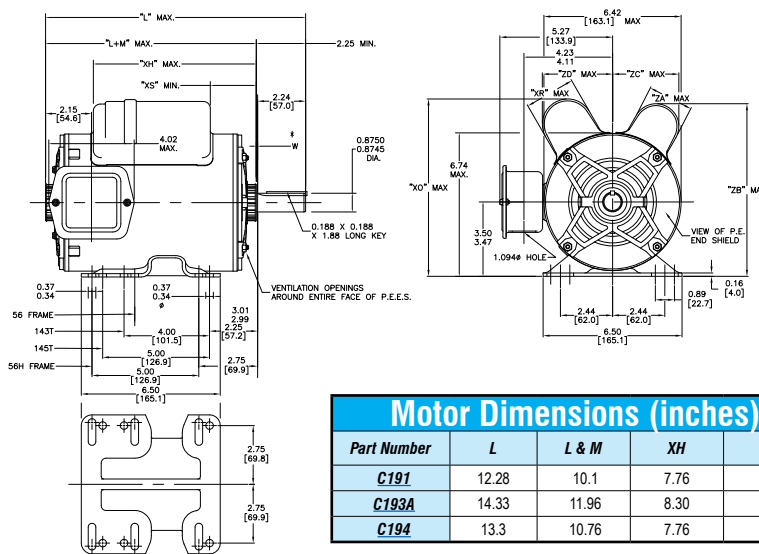
## Rigid Base

**Dimensions**  
in [mm]

**Figure 6 – C188A**



**Figure 7 – C191, C193A, C194**



See our website: [www.AutomationDirect.com](http://www.AutomationDirect.com) for complete engineering drawings.

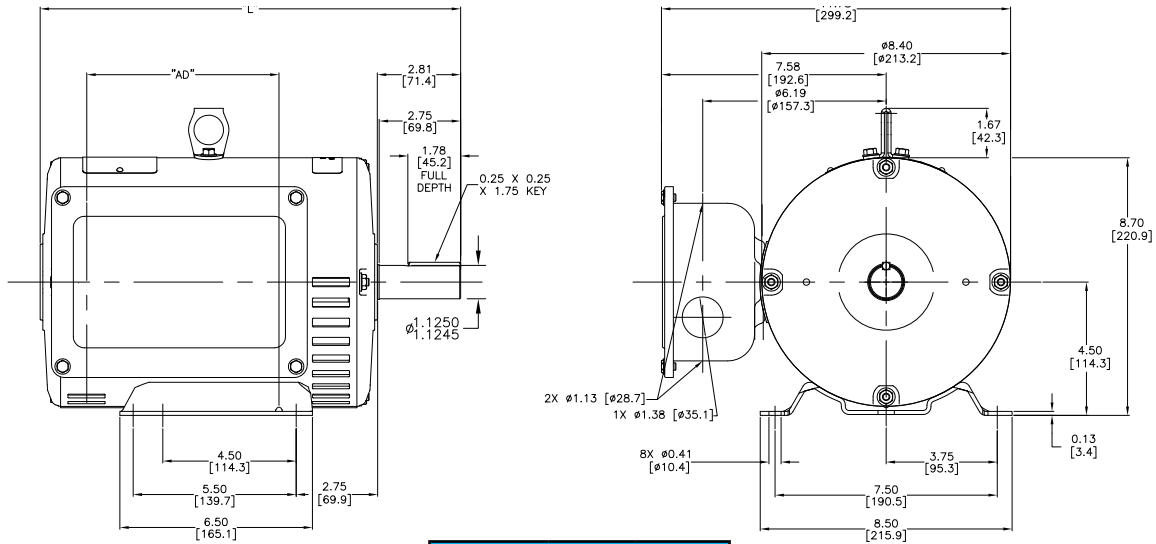


# General Purpose, Single-Phase (NEMA Service Factor) Drip-proof Motors

Rigid Base

**Dimensions**  
in [mm]

**Figure 8 – I113A**



Motor Dimensions (inches)		
Part Number	L	AD
I113A	14.21	5.88

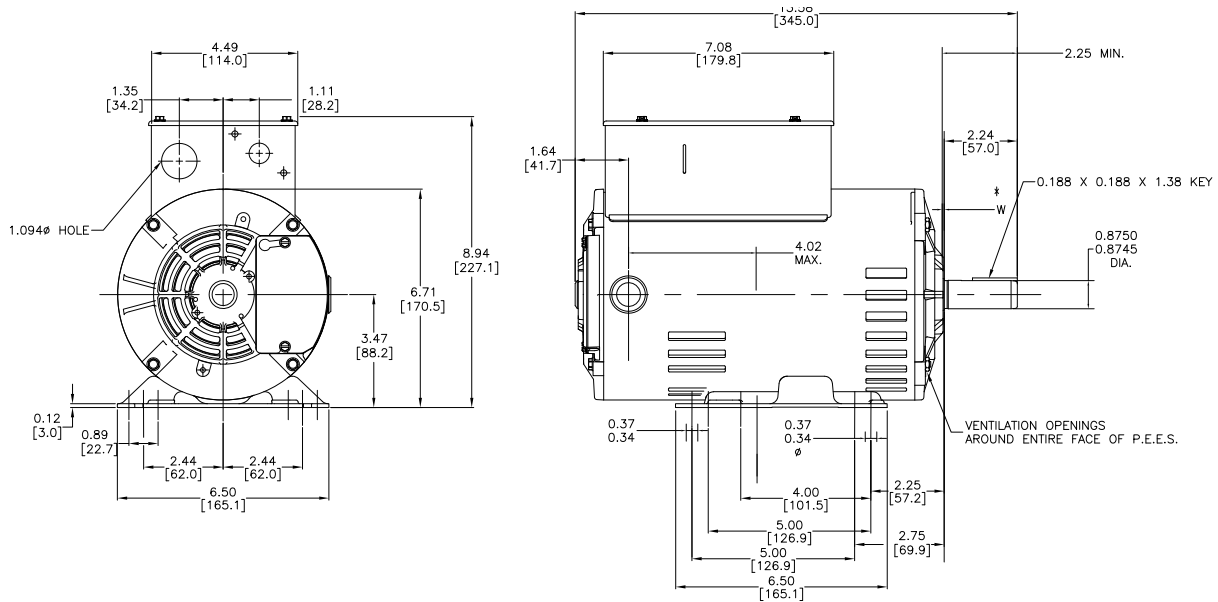
See our website: [www.AutomationDirect.com](http://www.AutomationDirect.com) for complete engineering drawings.

# General Purpose, Single-Phase (NEMA Service Factor) Drip-proof Motors

Rigid Base

**Dimensions**  
in [mm]

**Figure 9 – I127 Dimensions**



See our website: [www.AutomationDirect.com](http://www.AutomationDirect.com) for complete engineering drawings.

