

# General Purpose, Single-Phase (NEMA Service Factor) Drip-proof Motors

## Rigid Base and C-Face Footed (Rigid Base)



**Rigid Base**



**C-Face Footed (Rigid Base)**



### Rigid Base Features

- Heavy gauge steel frame and base
- Ball bearings (except as noted)
- Economical capacitor start designs
- Service factor, as noted
- UL recognized and CSA certified

### C-Face Footed (Rigid Base) Features

- Ball bearings, mechanically locked on shaft end
- NEMA service factors
- Heavy gauge steel frame and base
- Capacitor start, capacitor run design for higher efficiency
- UL recognized and CSA certified

### Applications

Typical uses include machine tools, conveyors, packaging machines, batching machines, food and beverage equipment, pumps, and fans

Motor Shipping Schedule *		
Same or one day *	Up to 7 days	Up to 10 days
Color indicates shipping lead time in business days. Check stock status online. * Certain heavy and oversized items can be shipped only via LTL. Check our website for current shipping method constraints by part number.		

# General Purpose, Single-Phase (NEMA Service Factor) Drip-proof Motors

Rigid Base

Motor Specifications – General Purpose, Single Phase (NEMA Service Factor), Rigid Base, Drip-proof Motors											
Part Number*	Price	HP	Base RPM	Volts	Service Factor	Encl.	NEMA Design	NEMA Frame	Model No.	Weight (lb)*	Notes
4354		1/4	1800	115	1.35	DP	N/A**	48	5KH39QN9538	13	–
4362			1800	115			N/A**	48	5KH39QN9686X	13	Auto Overload
C147A			1800	115 / 230			N	48	048B17D11005	17	Suitable for 208VAC @ 60Hz
C158A		1/3	1800	115 / 230	1.35 @ 60Hz 1.0 @ 50Hz	N	56	056B17D11019	21		
G1098A		1/2	3600	115 / 230	1.25	N	48	048B34D11003	20		
C167A			1800	115 / 230		N	56	056B17D11018	23		
G915A		3/4	3600	115 / 230		N	56	056B34D11019	25		
C175A			1800	115 / 230		B	56	056B17D15545	42		
C179A		1	3600	115 / 230		B	56	056B34D11014	30		
C188A		1	1800	115 / 208-230		B	143T	143C17DRR40001A1	31	–	
G937A		1-1/2	3600	115 / 230		N	56	056B34D11012	35	Suitable for 208VAC @ 60Hz	
C191		1-1/2	1800	115 / 208-230		N/A**	145T	5KCR49SN0065	35	N/A**	
C185A		1-1/2	1800	115 / 230		B	56H	056B17D15548	45	Suitable for 208VAC @ 60Hz	
I102		2	3600	115 / 208-230		L	145T	145TBDR5302	35	N/A**	
C187A		2	3600	115 / 230	N/A**	56	056B34D11011	38	Suitable for 208VAC @ 60Hz		
C193A		2	1800	115 / 230	N/A**	56HZ***	056B17D15555	50	Suitable for 208VAC @ 60Hz		
I127		2	1800	115 / 208-230	L	145T	145TBDR5337	48	Manual Overload		
I103A		3	3600	115 / 208-230	L	182T	182TCDW7001	62	N/A**		
C194		3	3600	115 / 230	N/A**	145T	5KCR48TN8062	38			
I113A		3	1800	115 / 208-230	N	184T	184TCDW7026	78			
I104A		5	3600	208-230	N/A**	184T	184TBDW17008	79			
I114A		5	1800	208-230	N/A**	184T	184TBDW7026	82			
I108A		7-1/2	3600	208-230	L	184T	184TBDW7001	103			
I105		7-1/2	3600	208-230	L	213T	213TCDW7001	102	1.0 S.F. @ 208VAC		
I115		7-1/2	1800	208-230	L	215T	215TBDW7026	115	N/A*		
I106		10	3600	208-230	L	215T	215TCDW17002	193			
I116		10	1800	208-230	L	215T	215TBDW7028	140			

\* Refer to the Motor Shipping Schedule table for shipping information.  
 Certain heavy and oversized items can be shipped only via LTL. Check our website for current shipping method constraints by part number.  
 \*\* Data not available from manufacturer.  
 \*\*\* Base of 56HZ frame motors has holes and slots to match NEMA 56, 56H, 143T, and 145T mounting dimensions.  
 Note: Please review the AutomationDirect Terms & Conditions for warranty and service for this product. Warranty service can be arranged through numerous Marathon Electric service centers. See list of service centers on our website at [www.automationdirect.com](http://www.automationdirect.com)

# General Purpose, Single-Phase (NEMA Service Factor) Drip-proof Motors

C-Face Footed (Rigid Base)

Motor Specifications – General Purpose, Single Phase (NEMA Service Factor), C-Face Footed (Rigid Base), Drip-proof Motors											
Part Number*	Price	HP	Base RPM	Volts	Service Factor	Encl.	NEMA Design	NEMA Frame	Model No.	Weight (lb)*	Notes
<b>K235A</b>		1/3	1800	115 / 230	1.35	DP	L	56C	056B17D11035	21	Suitable for 208V @ 60Hz
<b>E261A</b>		1/2		100 - 120 / 200 - 240	1.25		N/A**		056B17D11029	25	Auto Overload
<b>E270A</b>		3/4		100 - 120 / 200 - 240			056B17DRC70002A1		25	Auto Overload	
<b>E268A</b>		3/4			100 / 240 & 100 - 120 / 200 - 240		1.15		N	056B17DRR70008A1	35
<b>EG277A</b>		1		115 / 230	056B17DRR70019A1				35	Manual Overload	
<b>C1269A</b>		2		3600	115 / 230		N/A**		L56C	056B34D15537	31

\* Refer to the Motor Shipping Schedule table for shipping information.  
 Certain heavy and oversized items can be shipped only via LTL. Check our website for current shipping method constraints by part number.  
 \*\*Data not available from manufacturer.  
 Note: Please review the AutomationDirect Terms & Conditions for warranty and service for this product. Warranty service can be arranged through numerous Marathon Electric service centers. See list of service centers on our website at [www.automationdirect.com](http://www.automationdirect.com)

# General Purpose, Single-Phase (NEMA Service Factor) Drip-proof Motors

Rigid Base

Performance Data - General Purpose, Single-Phase (NEMA Service Factor) Drip-proof Motors											
Part Number	HP	F.L. RPM	Current @ 115V/230V (Amps)			Torque (lb-ft)			F.L. Effic. %	F.L. Power Factor	Rotor Inertia (lb.-ft <sup>2</sup> )
			No Load 230V	Full Load 115/230V	Locked Rotor	Full Load	Locked Rotor	Break-down			
4354	1/4	1725	4.54	5.1	30.2 / 15.1	0.75	1.20	2.02	57.5	59.5	0.0546
4362	1/4	1725	4.54	5.1	30.2 / 15.1	0.75	1.20	2.02	52.5	59.5	0.0546
C147A	1/4	1745	0.5	2.4 / 1.2	21.4 / 10.7	0.75	2.54	1.94	68.5	92.7	0.0413
K235A	1/3	1725	1.2	3.8 / 1.9	28.4 / 14.2	16	58	43.5	72.4	79	0.0496
C158A	1/3	1725	1.2	3.8 / 1.9	28.4 / 14.2	1.00	3.63	2.72	72.4	79	0.0497
G1098A	1/2	3450	0.6	4.4 / 2.2	42.3 / 21.2	0.76	2.08	2.13	72.4	98	0.0218
C167A	1/2	1725	0.9	4.6 / 2.3	35.4 / 17.7	1.53	4.73	3.78	76.2	91.6	0.0609
E261A	1/2	1725	0.9	4.4 / 2.2	33.9 / 17	24.4	75.6	60.4	76.2	91.6	0.0609
G915A	3/4	3450	1.4	7.2 / 3.6	57.5 / 28.8	1.14	3.38	3.19	76.2	89.2	0.0255
C175A	3/4	1725	1.0	6.0 / 3.3	61.2 / 30.6	3.00	9.50	8.27	81.8	97.2	0.0748
E270A	3/4	1725	1.3	6.2 / 3.1	63 / 31.5	2.28	8.61	7.24	81.8	91	0.0309
E268A	3/4	1725	1.3	8.8 / 4.4	60.4 / 30.2	2.28	8.61	7.24	81.8	88	0.0309
C179A	1	3450	0.9	8.8 / 4.4	50 / 25	1.50	3.6	4.5	80.4	99	0.0321
C188A	1	1725	4.7	13.4 / 6.7	77.1 / 38.6	3.01	9.14	7.58	72	67.8	0.0884
EG277A	1	1725	1.1	8.8 / 4.4	68.4 / 34.2	3.00	8.94	7.99	82.6	96	0.0309
G937A	1-1/2	3450	2.7	13.6 / 6.8	112 / 56	2.25	4.56	8.25	81.5	93.4	0.0369
C191	1-1/2	1725	6.0	18.2 / 9.1	50.6	4.53	11.99	11.60	72	76.5	0.1015
C185A	1-1/2	1725	1.7	12.6 / 6.3	97.4 / 48.7	4.50	13.13	11.88	82.5	94.3	0.1491
I102	2	3500	3.5	19.1 / 9.5	117 / 58.5	3.01	6.53	6.18	78.5	86.5	0.0581
C187A	2	3450	3.2	17.8 / 8.9	84.6 / 42.3	2.22	4.67	4.94	82.9	91.9	0.0394
C1269A	2	3450	3.7	17.8 / 8.9	151.8 / 70.9	3.0	5.13	9.63	82.9	90	0.0247
C193A	2	1725	3.7	17.6 / 8.8	130 / 65	6.00	17.63	17.94	84.5	90.2	0.1696
I127	2	1740	3.9	18.8 / 9.4	127 / 63.5	6.02	15.90	14.90	81.5	86.1	0.1546
I103A	3	3500	8.6	32 / 16.1	159.8 / 79.9	4.50	7.30	10.50	75.5	80	0.1184
C194	3	3450	8.4	29.4 / 14.7	181.2 / 90.6	4.50	8.2	10.9	77	82	0.0530
I113A	3	1745	19.4/9.7	34 / 16.8	181.2 / 90.6	9.00	24.60	18.40	75.5	76	0.3625
I104A	5	3500	6.9	24-22	141	7.50	19.00	19.20	80	92	0.1552
I114A	5	1740	5.9	23-21	138	15.00	41.10	32.50	83	94	0.4422
I108A	7-1/2	3515	7.6	34-31	235	11.17	26.00	30.00	82.5	93.5	0.2277
I105	7-1/2	3470	16.6	40-37	173	11.30	15.60	23.20	78.5	82.5	0.3672
I115	7-1/2	1735	14	37.5 / 34.5	20.00	22.50	45.00	51.50	84	85.5	0.7371
I106	10	3495	20.4	50-46	254	15.00	20.00	40.00	82.5	83.5	0.4748
I116	10	1730	14	49-44	260	30.10	47.40	67.50	82.5	89	0.9768

\* Maximum Constant HP RPM is for direct-coupled loads.

# General Purpose, Single-Phase (NEMA Service Factor) Drip-proof Motors

## C-Face Footed (Rigid Base)

### Dimensions

in [mm]

Figure 1 – C1269A

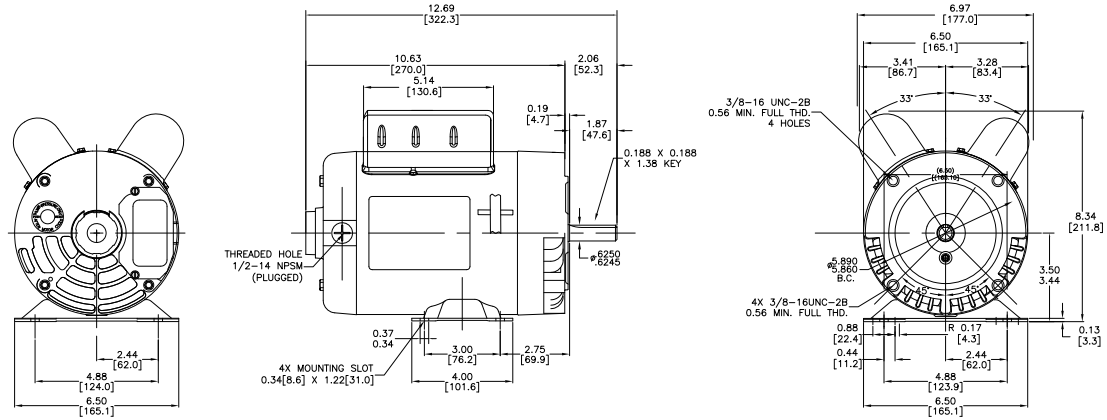
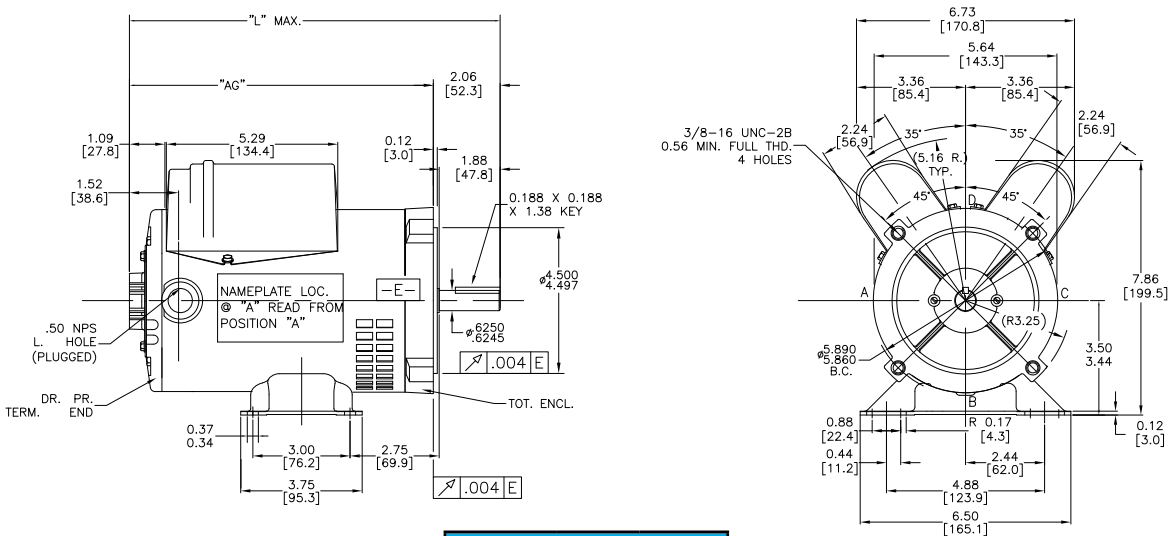


Figure 2 – K235A, E261A



Motor Dimensions (inches)		
Part Number	L	AG
K235A	10.94	8.88
E261A	11.44	9.38

See our website: [www.AutomationDirect.com](http://www.AutomationDirect.com) for complete engineering drawings.

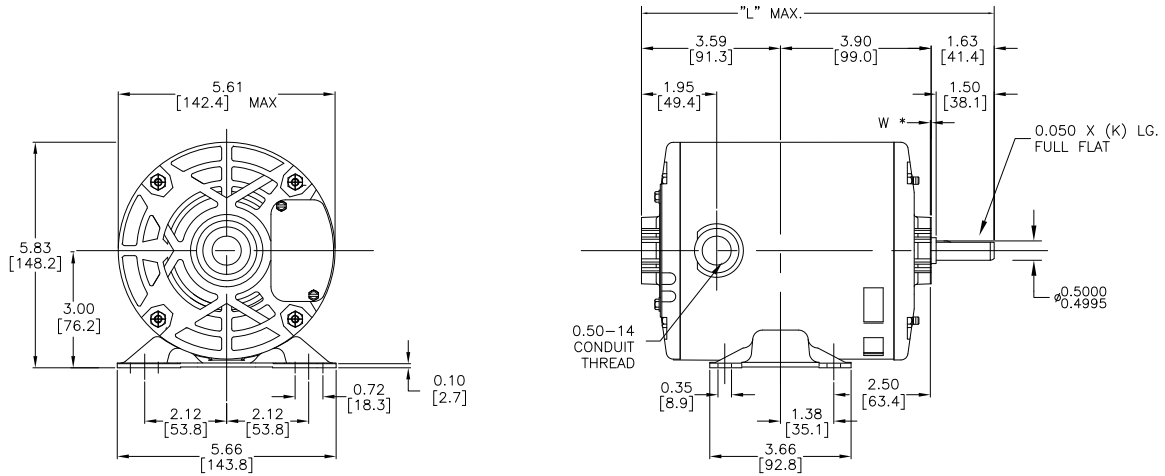
# General Purpose, Single-Phase (NEMA Service Factor) Drip-proof Motors

Rigid Base

## Dimensions

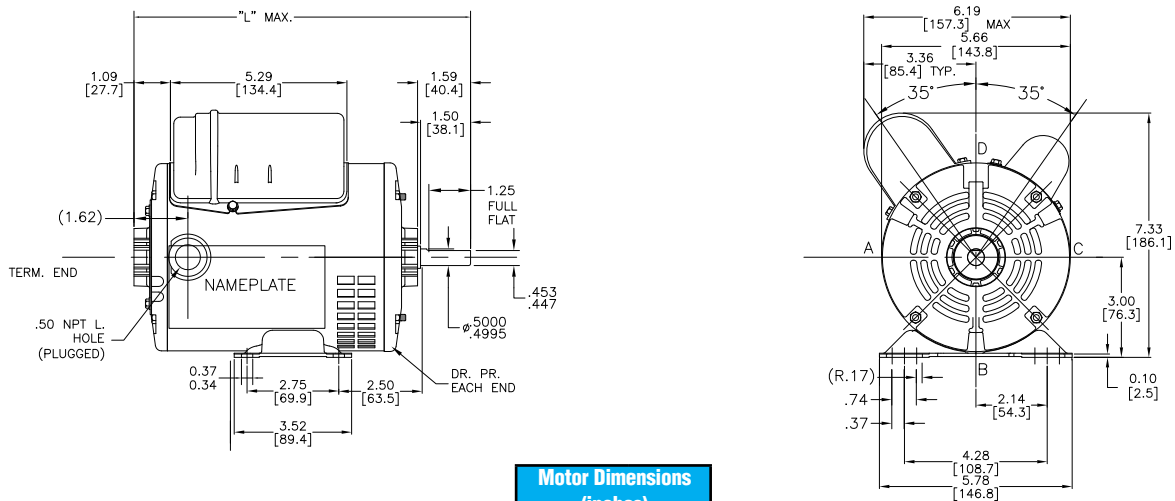
in [mm]

Figure 3 – 4354, 4362



Motor Dimensions (inches)	
Part Number	L
4354	8.94
4362	8.94

Figure 4 – C147A, G1098A



Motor Dimensions (inches)	
Part Number	L
C147A	10.34
G1098	10.59

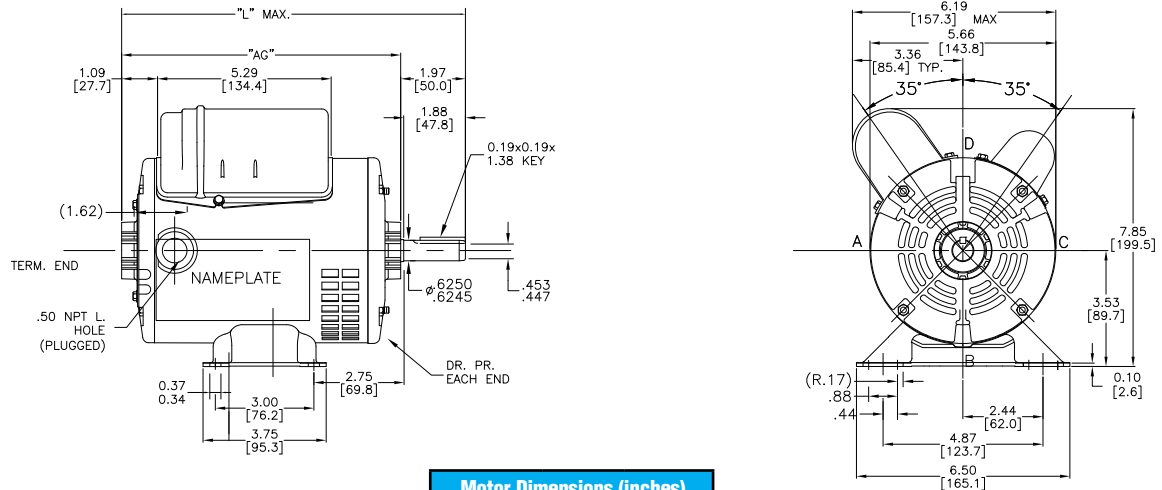
# General Purpose, Single-Phase (NEMA Service Factor) Drip-proof Motors

Rigid Base

## Dimensions

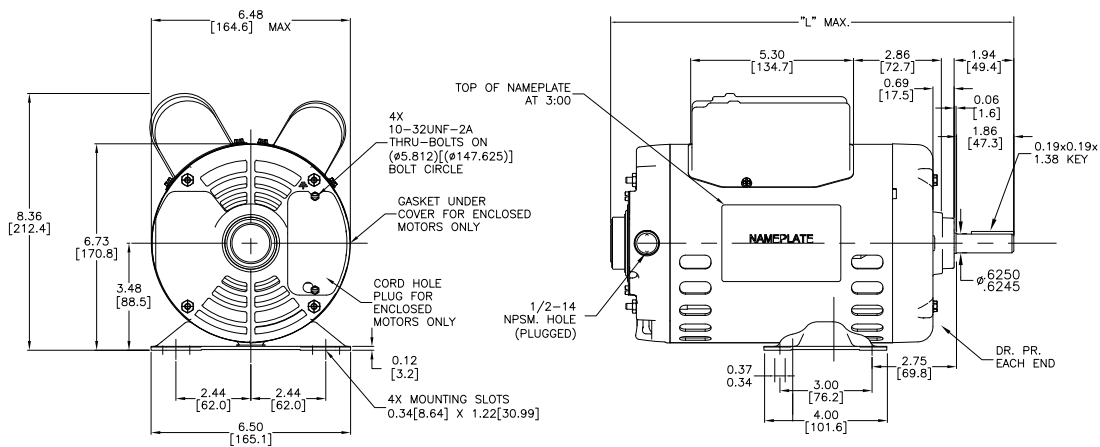
in [mm]

Figure 5 – C158A, C167A, G915A



Motor Dimensions (inches)		
Part Number	L	AG
C158A	10.72	8.75
C167A	11.47	9.50
C915A	11.47	9.50

Figure 6 – C175A, C179A, C185A, C187A, G937A



Motor Dimensions (inches)	
Part Number	L
C175A	13.13
C179A	12.33
C185A	13.65
C187A	12.94
C937A	12.75

See our website: [www.AutomationDirect.com](http://www.AutomationDirect.com) for complete engineering drawings.

# General Purpose, Single-Phase (NEMA Service Factor) Drip-proof Motors

Rigid Base

## Dimensions

in [mm]

Figure 7 – C188A

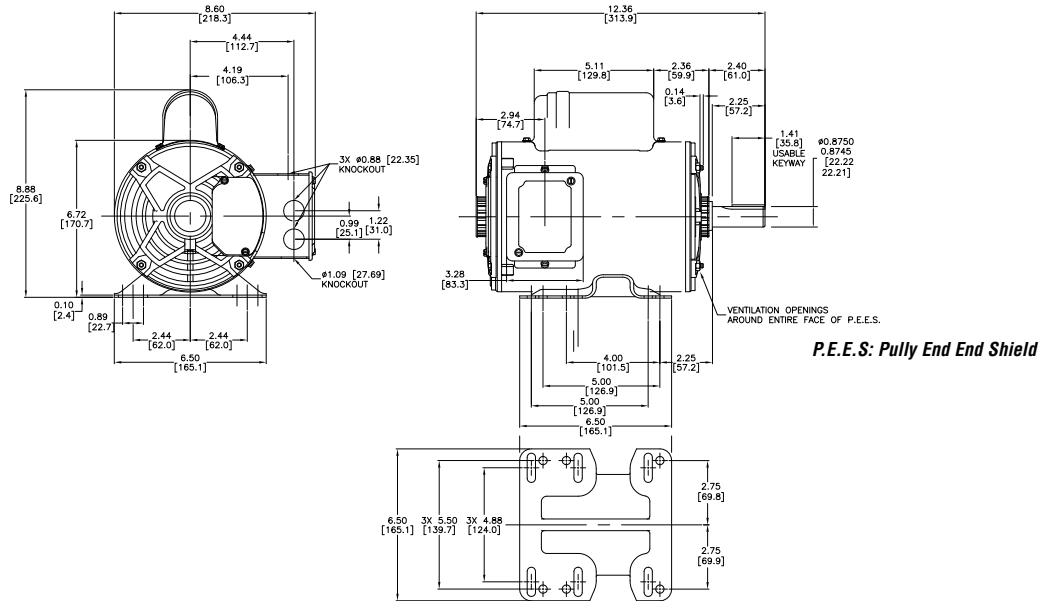
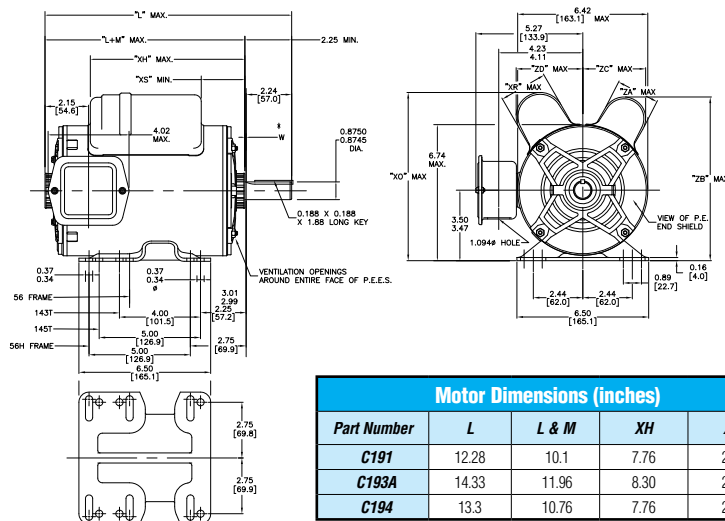


Figure 8 – C191, C193A, C194



Motor Dimensions (inches)				
Part Number	L	L & M	XH	XS
C191	12.28	10.1	7.76	2.01
C193A	14.33	11.96	8.30	2.61
C194	13.3	10.76	7.76	2.01

See our website: [www.AutomationDirect.com](http://www.AutomationDirect.com) for complete engineering drawings.



# General Purpose, Single-Phase (NEMA Service Factor) Drip-proof Motors

Rigid Base

## Dimensions

in [mm]

Figure 9 – I102

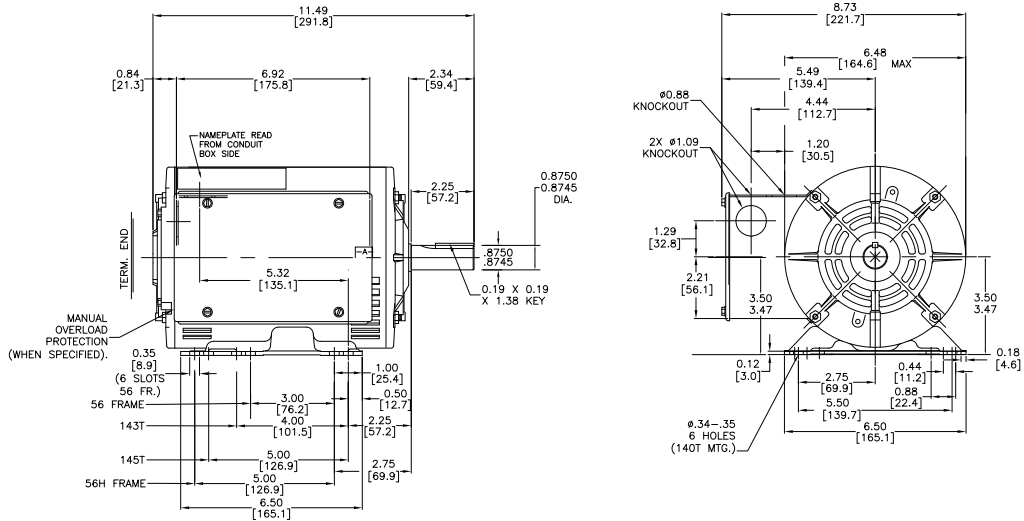
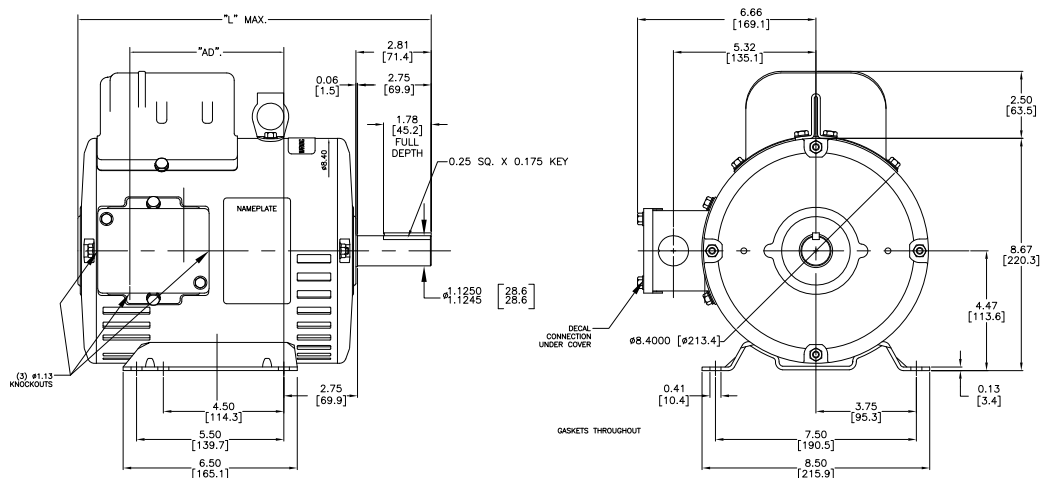


Figure 10 – I103A, I104A, I108A



Motor Dimensions (inches)		
Part Number	L	AD
I103A	13.68	6.25
I104A	14.68	7.25
I108A	16.69	8.00

See our website: [www.AutomationDirect.com](http://www.AutomationDirect.com) for complete engineering drawings.

# General Purpose, Single-Phase (NEMA Service Factor) Drip-proof Motors

Rigid Base

## Dimensions

in [mm]

Figure 11 – I105, I106, I115

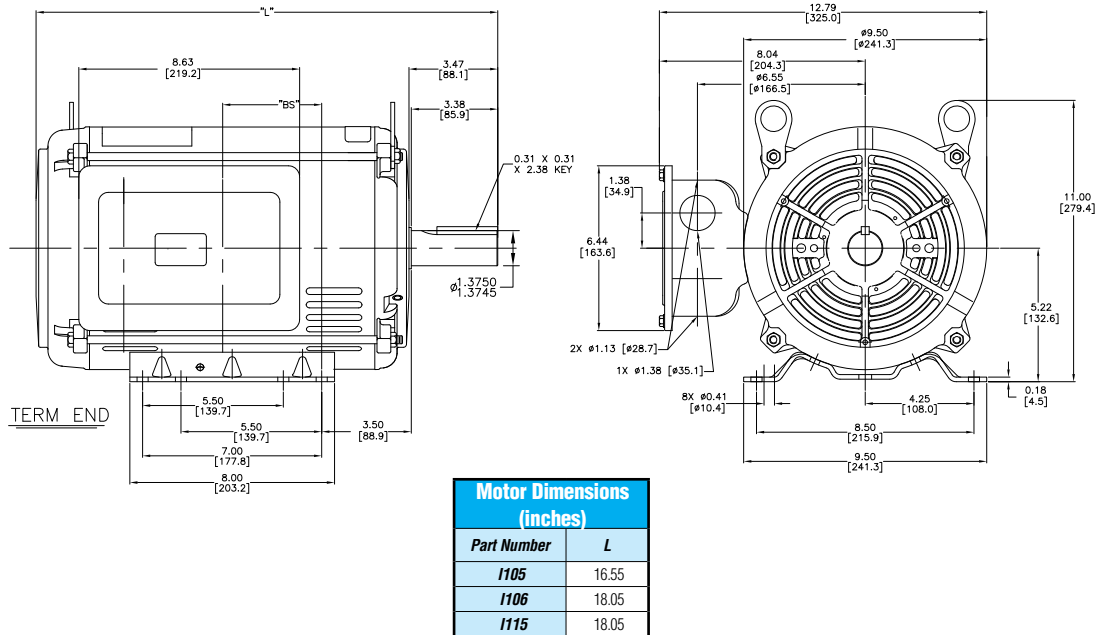
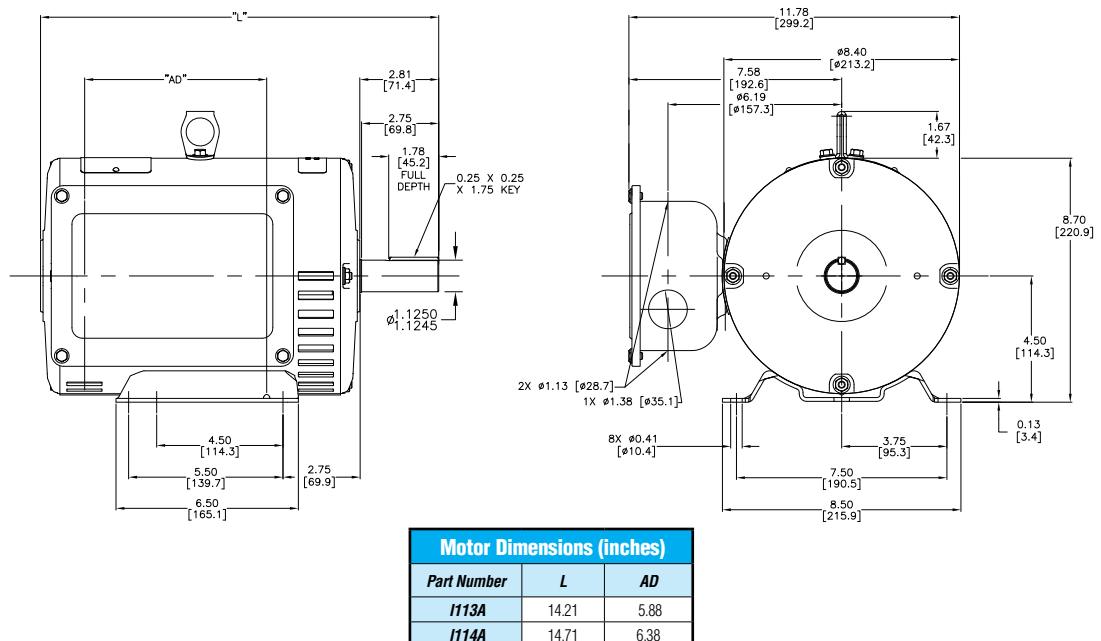


Figure 12 – I113A, I114A



See our website: [www.AutomationDirect.com](http://www.AutomationDirect.com) for complete engineering drawings.

# General Purpose, Single-Phase (NEMA Service Factor) Drip-proof Motors

Rigid Base

## Dimensions

in [mm]

Figure 13 – I116

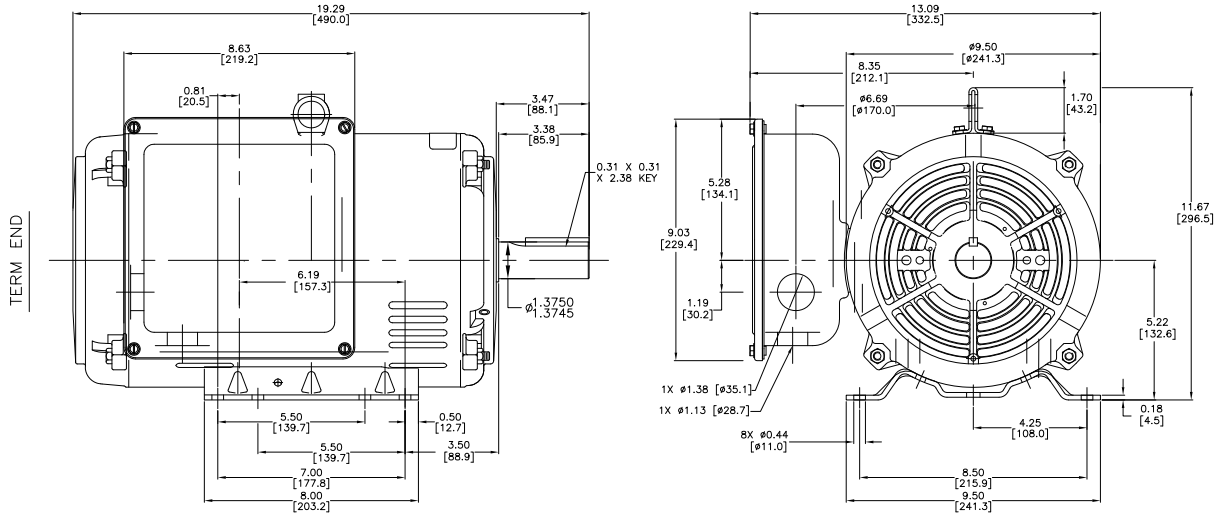
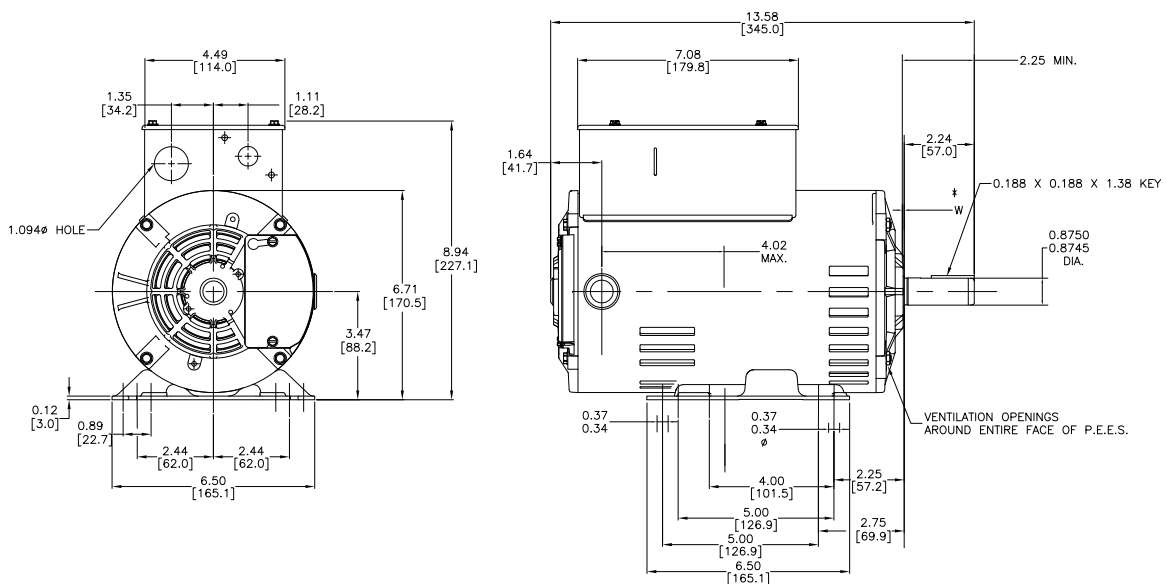


Figure 12 – I127 Dimensions



See our website: [www.AutomationDirect.com](http://www.AutomationDirect.com) for complete engineering drawings.

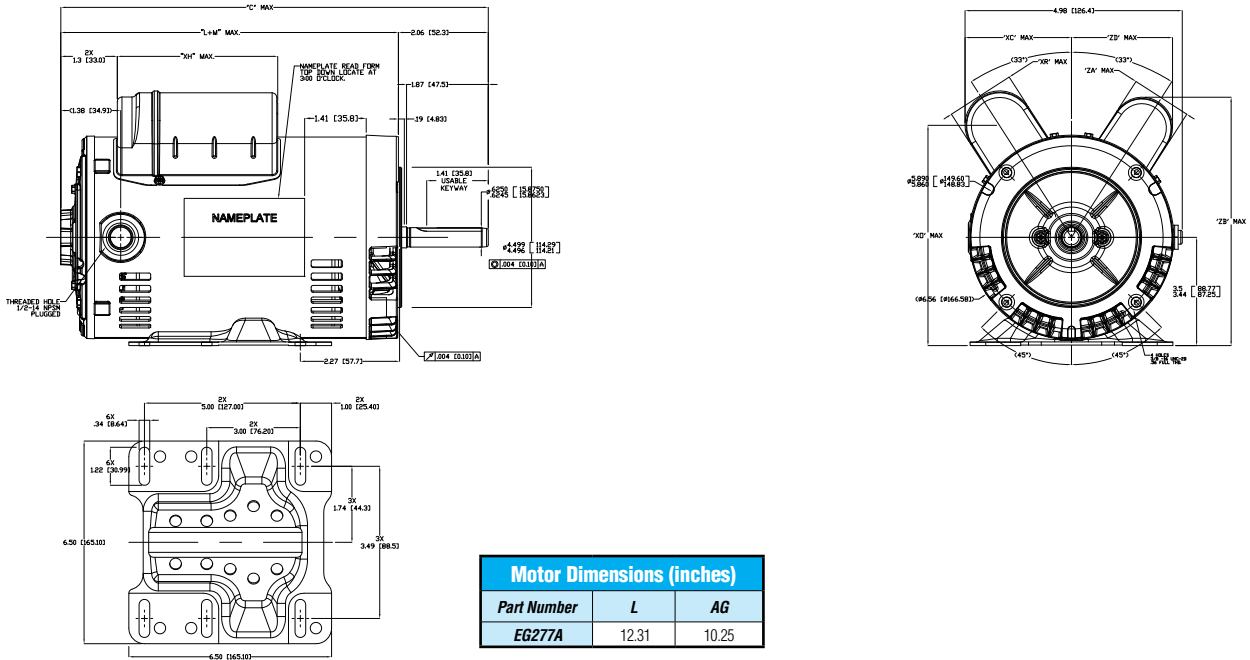
# General Purpose, Single-Phase (NEMA Service Factor) Drip-proof Motors

## C-Face Footed (Rigid Base)

### Dimensions

in [mm]

Figure 15 – EG277A



See our website: [www.AutomationDirect.com](http://www.AutomationDirect.com) for complete engineering drawings.