

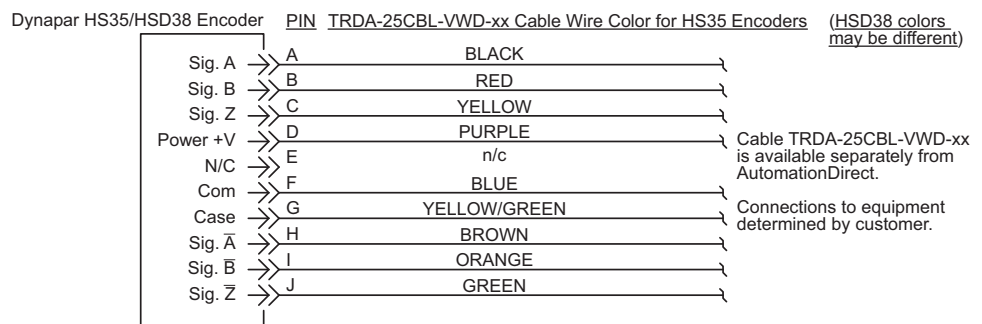
Blue Max[®] 2000 Vector Duty Motor Accessories

Motor Accessories		
Part Number	Price	Description *
A774		Encoder kit, replacement, for Blue Max TEFC encoder motors. Dynapar HS35 encoder, 5–26 VDC input, Line Driver output, 1024 pulses per revolution, 1-in bore.
A775		Encoder kit, replacement, for Blue Max TEBC encoder motors. Dynapar HSD38 encoder, 5–26 VDC input, Line Driver output, 1024 pulses per revolution. 1-in bore.

* Replacement/spare encoder kit for Blue Max Y5xx-A774 and Y5xx-A775 motors; can also be field installed on Blue Max Y5xx motors; select appropriate encoder kit per motor fan type (TEFC or TEBC).

Encoder Connector Pinout

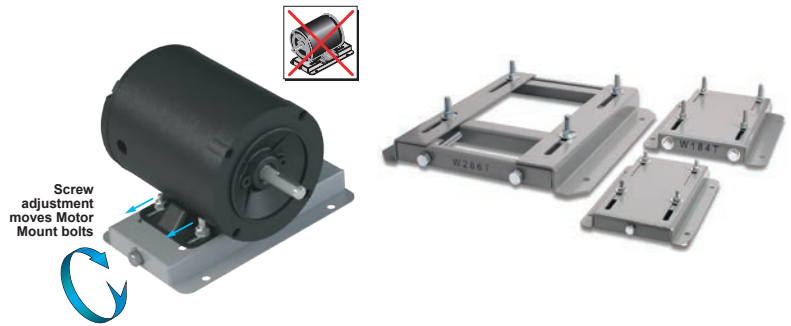
Note: A mating connector is supplied loose for the customer's wiring on encoder equipped TEFC motors and a mating connector pre-wired to a cable and pigtailed in a conduit box on encoder equipped TEBC motors.
 Prewired cables TRDA-25CBL-VWD-xx (10, 20, & 30 ft) and replacement MS connectors TRDA-25CON-VWD are available from AutomationDirect.



STABLE™ Motor Slide Bases

Mounting Slide Bases for 56 to 449T NEMA Motors Features

- Allows adjustment of motor mounting position
- Slide direction is perpendicular to motor shaft
- Double adjusting screws for frames 182T-449T
- Manufactured to precise dimensional standards
- Dimensionally interchangeable with existing major makes
- Heavy-duty steel construction
- Painted with oven-baked primer for better adhesion of customer's paint
- All "D" bolts (motor mounting bolts) are fixed to the exact motor foot pattern
- All "D" bolts are welded into position to prevent spinning and dropping from slots
- Nuts and washers are provided for securing the motor to the slide base



STABLE Motor Slide Bases for 3-Phase Motors

Part Number (MTA-BASE-xxx)	Price	Fits Frame Type	Product Wt. (lb)	Fits Motor					Drawing Links			
				IronHorse	Leeson®	WEG (Part number ending in...)	Marathon					
					WashGuard®		microMAX, Max +, Black Max, Blue Max, SyMAX	XRI GP & NEMA Premium, Jet Pump		Globetrotter		
W56		56*	2.8	MTPM-P3x-1x18							PDF	
				MTPM-P5x-1x18								
				MTPM-P7x-1x18								
				MTPM-0xx-1x18								
				MTPM-1xx-1x18								
				MTR(2)(P)-xxx-xxxxx*								
				MTRJ(P)-xxx-xxxxx								
				MTSN-P33-3BD18								
				MTSN-P33-3BD18R								
				MTSN-P33-3BD36	112427.00							
				MTSP-P33-3BD18	112428.00							
				MTSP-P33-3BD18R	112429.00							
				MTSP-P33-3BD18R	112430.00							
				MTSP-P33-3BD36	113019.00							
				MTSP-P33-3BD36R	113023.00							
				MTSN-P50-3BD18	113473.00							
				MTSN-P50-3BD18R	113586.00							
				MTSN-P50-3BD36	113590.00							
				MTSP-P50-3BD12	113591.00							
				MTSP-P50-3BD18	113649.00							
				MTSP-P50-3BD18R	116644.00							
				MTSP-P50-3BD36	116645.00							
				MTSP-P50-3BD36R	119468.00							
				MTSN-P75-3BD18	119469.00							
				MTSN-P75-3BD18R	119471.00							
				MTSN-P75-3BD36	119475.00							
				MTSP-P75-3BD12	119476.00			(...)56-S				
				MTSP-P75-3BD18	119478.00			(...)56C-S				
				MTSP-P75-3BD18R	119480.00							
				MTSP-P75-3BD36	119482.00							
				MTSP-P75-3BD36R	119483.00							
				MTSN-001-3BD18	191202.00							
				MTSN-001-3BD18R	191204.00							
				MTSN-001-3BD36	191205.00							
				MTSP-001-3BD18	191206.00							
				MTSP-001-3BD18R	191207.00							
				MTSP-001-3BD36	191208.00							
				MTSP-001-3BD36R	191560.00							
				MTSN-1P5-3BD18	191561.00							
				MTSN-1P5-3BD18R	191562.00							
				MTSN-1P5-3BD36	191563.00							
				MTSP-1P5-3BD18	191564.00							
				MTSP-1P5-3BD18R	191569.00							
				MTSP-1P5-3BD36								
				MTSP-1P5-3BD36R								
				MTSN-002-3BD18								
				MTSN-002-3BD18R								
				MTSN-002-3BD36								
				MTSP-002-3BD18								
				MTSP-002-3BD18R								
MTSP-002-3BD36												
MTSP-002-3BD36R												

* IronHorse MTR2 56HC motors have double-punched bases to fit on slide base MTA-BASE-W56.

STABLE™ Motor Slide Bases

STABLE Motor Slide Bases for 3-Phase Motors										
Part Number (MTA-BASE- xxx)	Price	Fits Frame Type	Product Wt. (lb)	Fits Motor						Drawing Links
				IronHorse	Leeson®	WEG (Part number ending in...)	Marathon			
					WashGuard®		microMAX, Max+, Black Max, Blue Max, SyMAX	XRI GP & NEMA Premium, Jet Pump	Globetrotter	
<u>W143T</u>		143T/ TC	4.6	MTCP2-001-3BD18(C) MTCP2-1P5-3BD36 MTSN-1P5-3BD36-14 MTSP-1P5-3BD36-14 MTSP-1P5-3BD36R-14	191487.00 191565.00		Y536(-A772)	E2001A	-	PDF
<u>W145T</u>		145T/ TC	5.1	MTCP2-001-3BD12 MTCP2-1P5-3BD18(C) MTCP2-002-3BD18(C) MTCP2-002-3BD36 MTSP-001-3BD12 MTSN-1P5-3BD18-14 MTSN-1P5-3BD18R-14 MTSP-1P5-3BD18-14 MTSP-1P5-3BD18R-14 MTSN-002-3BD18-14 MTSN-002-3BD18R-14 MTSN-002-3BD36-14 MTSP-002-3BD18-14 MTSP-002-3BD18R-14 MTSP-002-3BD36-14 MTSP-002-3BD36R-14	121866.00 121868.00 121870.00 122182.00 122184.00 122185.00 191490.00 191491.00 191570.00	(...) 145T-S (...) 145TC-S	Y366 Y368 Y284 Y285 Y537 Y538(-A772) Y551(-A772)	E2002 E2004A E2007A	-	PDF
<u>W182T</u>		182T/ TC	9.2	MTCP2-1P5-3BD12 MTCP2-003-3BD18(C) MTCP2-003-3BD36 MTSP-1P5-3BD12 MTSN-003-3BD18-18 MTSN-003-3BD36-18 MTSP-003-3BD18-18 MTSP-003-3BD36-18	132196.00 132198.00		Y1999 Y286A Y541A(-A772)	-	GT0010A GT1010A	PDF
<u>W184T</u>		184T/ TC	10	MTCP2-002-3BD12 MTCP2-005-3BD18(C) MTCP2-005-3BD36 MTF-00x-1C18 MTSP-002-3BD12 MTSP-005-3BD18 MTSP-005-3BD36	132197.00 132200.00 132201.00 132440.00		Y1372 Y540(-A772) Y543A(-A772) SY067	-	GT0013A GT1013A GT1210A GT1212A GT1213A	PDF
<u>W213T</u>		213T/ TC	13	MTCP2-003-3BD12 MTCP2-7P5-3BD18(C) MTCP2-7P5-3BD36 MTSP-003-3BD12 MTSP-7P5-3BD18	140819.00 140822.00 141266.00		Y994 Y542(-A772) Y545(-A772) SY068	-	GT0016A GT1016A GT1216A	PDF
<u>W215T</u>		215T/ TC	15	MTCP2-005-3BD12 MTCP2-010-3BD18(C) MTCP2-010-3BD36 MTSP-005-3BD12 MTSP-010-3BD18	140820.00 140821.00		Y996 Y544(-A772) Y547(-A772) SY069	-	GT0019A GT1019A GT1218A GT1219A	PDF
<u>W254T</u>		254T/ TC	18	MTCP2-7P5-3BD12 MTCP2-015-3BD18(C) MTCP2-015-3BD36 MTSP-015-3BD18	-		Y546(-A772) Y549(-A772)	-	GT0059 GT1022A GT1222A	PDF
<u>W256T</u>		256T/ TC	19	MTCP2-010-3BD12 MTCP2-020-3BD18(C) MTCP2-020-3BD36 MTSP-020-3BD18	-		Y548(-A772)	-	GT0062 GT1025A GT1225A	PDF
<u>W284T</u>		284T/ TC	20	MTCP2-015-3BD12 MTCP2-025-3BD18(C)	-		-	-	GT0065 GT1028A	PDF
<u>W286T</u>		286T/ TC	21	MTCP2-020-3BD12 MTCP2-030-3BD18(C)	-		-	-	GT0067 GT1031A	PDF

* IronHorse MTR2 56HC motors have double-punched bases to fit on slide base [MTA-BASE-W56](#).

STABLE™ Motor Slide Bases

STABLE Motor Slide Bases for 3-Phase Motors										
Part Number (MTA-BASE- xxx)	Price	Fits Frame Type	Product Wt. (lb)	Fits Motor						Drawing Links
				IronHorse	Leeson®	WEG (Part number ending in...)	Marathon			
					WashGuard®		microMAX, Max+, Black Max, Blue Max, SyMAX	XRI GP & NEMA Premium, Jet Pump	Globetrotter	
W324T		324T/ TC	30	MTCP2-040-3BD18(C)	-		Y571(-A774) Y513(-A775)	-	GT0073 GT1034A	PDF
W326T		326T/ TC	31	MTCP2-050-3BD18(C)	-		Y572(-A774) Y514(-A775)	-	GT0077 GT1037A	PDF
W364T		364T/ TC	43	MTCP2-060-3BD18(C)	-		Y573(-A774) Y515(-A775)	-	GT1040A	PDF
W365T		365T/ TC	43	MTCP2-075-3BD18(C)	-		Y574(-A774) Y516(-A775)	-	GT1043A	PDF
W404T		404T/ TC	58	-	-		-	-	-	PDF
W405T		405T/ TC	60	MTCP2-100-3BD18(C)	-		Y575(-A774) Y517(-A775)	-	GT1046A	PDF
W444T		444T	63	MTCP2-125-3BD18	-		-	-	-	PDF
W445T		445T	65	MTCP2-150-3BD18	-		-	-	-	PDF
W447T		447T	89	MTCP2-200-3BD18	-		-	-	-	PDF
W449T		449T	94	MTCP2-250-3D18 MTCP2-300-3D18	-		-	-	-	PDF

* IronHorse MTR2 56HC motors have double-punched bases to fit on slide base [MTA-BASE-W56](#).

STABLE™ Motor Slide Bases

Mounting Slide Bases for 56 to 215T NEMA Motors Features

STABLE Motor Slide Bases for 1-phase Motors									
Part Number	Price	Fits Frame Type	Product Wt. (lb)	Fits Motor					
				IronHorse	Leeson®		Marathon		
					Washguard®	Marathon DP GP (NEMA Service Factor)	Marathon DP Air Compressor	Fan & Blower	Marathon TE GP 4-in-1
<u>MTA-BASE-W56</u>		56*	2.8	MTR2-xxx-1AB18 MTR2-xxx-1AB36 MTPM-xxx-1L18 MTPM-xxx-1M18	112431.00	G915A C167A C187A E261A E268A	D010	C216	G570
	112527.00				C1153			D311	
	112528.00				C1155			G571	
	112529.00				B319			D312	
	113583.00				D118			G572	
	114311.00				C1158			D313	
	114313.00				C235			G573	
	114317.00				D115			D314	
	191475.00				C1160			G574	
	191477.00				C1161			D315	
	191479.00				B352			G575	
								D316	
	<u>MTA-BASE-W143T</u>							143T / TC	4.6
<u>MTA-BASE-W145T</u>		145TC / TC	5.1	-	-	I127	-	-	-
<u>MTA-BASE-W182T</u>		182T / TC	9.2	-	-	-	-	-	-
<u>MTA-BASE-W184T</u>		184 / TC	10	MTF-00x-1C18	-	-	-	-	-
<u>MTA-BASE-W213T</u>		213T / TC	13	-	-	-	-	-	-
<u>MTA-BASE-W215T</u>		215T T TC	15	-	-	-	-	-	-

* IronHorse MTR2 56HC motors have double-punched bases to fit on slide base [MTA-BASE-W56](#).