

# Connection Cables Sensor and Signal

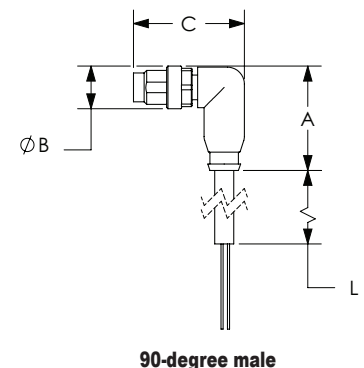
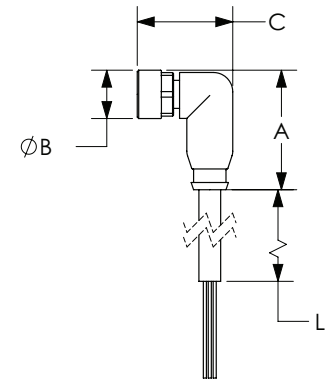
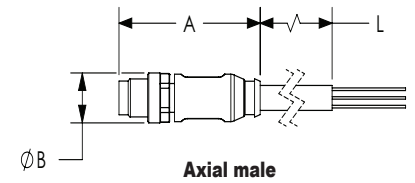
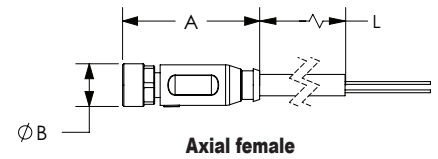
## M8 A-coded Cable to Pigtail

### Features

- Industry-standard axial and 90-degree M8 screw-lock connectors with open leads
- Cables listed can be used with patch cables
- 1.5m [4.9ft], 2m [6.5ft], 5m [16.4ft], 7m [23ft], and 10m [32.8ft] cable lengths
- PVC (polyvinyl chloride) jacketed cable for general use and chemical washdown applications, ex. food & beverage industry
- PUR (polyurethane) jacketed cable for applications with exposure to oil and dynamic applications requiring more flexibility
- PP (polypropylene) wire insulation for low temperature applications



### Dimensions



M8 A-coded Cable to Pigtail										
Part Number	Price	Number of Wires	Connector	Cable Jacket/ Wire Insulation Material	Jacket Color	Dimensions				
						A	B	C	L	
						mm			m [ft]	
<a href="#">CD08-0A-020-A1</a>		3	Axial female	PVC/PVC	Gray	32	10	-	2	
<a href="#">CD08-0A-020-C1</a>			90-degree female			25	10	20	[6.5]	
<a href="#">CD08-0A-050-A1</a>			Axial female		Black	32	10	-	5	
<a href="#">CD08-0A-050-C1</a>			90-degree female			25	10	20		[16.4]
<a href="#">CD08-0C-050-A1-A</a>			Axial female	PUR/PP	32	10	-	5		
<a href="#">CD08-0C-050-C1-A</a>			90-degree female	PUR/PP	25	10	20		[16.4]	
<a href="#">CD08-0A-070-A1</a>			Axial female	PVC/PVC	Gray	32	10	-	7	
<a href="#">CD08-0A-070-C1</a>			90-degree female			25	10	20	[23]	
<a href="#">7000-08001-0200200</a>			Axial male	PUR/PVC	Yellow	39	10	-	2	
<a href="#">7000-08001-0300200</a>			Axial male	PUR/PP		39	10	-		[6.5]
<a href="#">7000-08021-0300200</a>			90-degree male	PUR/PP		25	10	26		5
<a href="#">7000-08001-0300500</a>			Axial male	PUR/PP		39	10	-		
<a href="#">7000-08021-0300500</a>			90-degree male	PUR/PP	25	10	26	10		
<a href="#">7000-08001-0301000</a>			Axial male	PUR/PP	39	10	-		[32.8]	
<a href="#">7000-08021-0301000</a>			90-degree male	PUR/PP	25	10	26	2		
<a href="#">7000-08001-2100200</a>			Axial male	PVC/PVC	Gray	39	10		-	[6.5]
<a href="#">7000-08021-2100200</a>			90-degree male			25	10	26	5	
<a href="#">7000-08001-2100500</a>			Axial male			39	10	-		[16.4]
<a href="#">7000-08021-2100500</a>			90-degree male			25	10	26	10	
<a href="#">7000-08001-2101000</a>			Axial male	39	10	-	[32.8]			
<a href="#">7000-08021-2101000</a>		90-degree male	PUR/PP	Yellow	32	10	-	2		
<a href="#">7000-08041-0300200</a>		90-degree female	PUR/PP		25	10	20	[6.5]		
<a href="#">7000-08041-0300500</a>		Axial female	PUR/PP		32	10	-	5		
<a href="#">7000-08081-0300500</a>		90-degree female	PUR/PP		25	10	20	[16.4]		

Continued on next page.

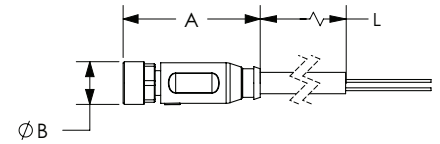
See our website: [www.AutomationDirect.com](http://www.AutomationDirect.com) for complete engineering drawings.

# Connection Cables Sensor and Signal

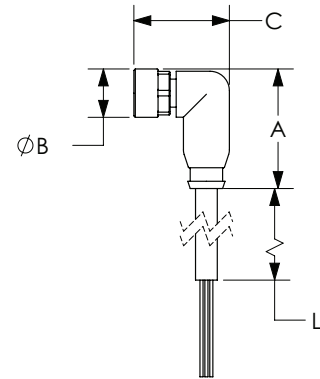
## M8 A-coded Cable to Pigtail (continued)

M8 A-coded Cable to Pigtail											
Part Number	Price	Number of Wires	Connector	Cable Jacket/Wire Insulation Material	Jacket Color	Dimensions					
						A	B	C	L		
						mm			m [ft]		
<a href="#">7000-08041-0300700</a>		3	Axial female	PUR/PP	Yellow	32	10	-	7		
<a href="#">7000-08081-0300700</a>			90-degree female	PUR/PP		25	10	20	[22.9]		
<a href="#">7000-08041-2100500</a>			Axial female	PVC/PVC	Gray	32	10	-	5		
<a href="#">7000-08081-2100500</a>			90-degree female			25	10	20	[16.4]		
<a href="#">7000-08061-0310200</a>		4	Axial female	PUR/PP	Yellow	32	10	-	2		
<a href="#">7000-08101-0310200</a>			90-degree female	PUR/PP		25	10	20	[6.5]		
<a href="#">7000-08061-0310500</a>			Axial female	PUR/PP	Yellow	32	10	-	5		
<a href="#">7000-08101-0310500</a>			90-degree female	PUR/PP		25	10	20	[16.4]		
<a href="#">7000-08061-0311000</a>			Axial female	PUR/PP	Yellow	32	10	-	10		
<a href="#">7000-08101-0311000</a>			90-degree female	PUR/PP		25	10	20	[32.8]		
<a href="#">CD08-0G-020-A1</a>			4	Axial female	PVC/PVC	Black	32	10	-	2	
<a href="#">CD08-0W-020-C1</a>				90-degree female			25	10	20	[6.5]	
<a href="#">CD08-0G-050-A1</a>				Axial female		Black	32	10	-	5	
<a href="#">CD08-0W-050-C1</a>				90-degree female			25	10	20	[16.4]	
<a href="#">CD08-0G-100-A1</a>		Axial female		Black		32	10	-	10		
<a href="#">CD08-0W-100-C1</a>		90-degree female				25	10	20	[32.8]		
<a href="#">7000-08061-2110200</a>		4		Axial female		PVC/PVC	Gray	32	10	-	2
<a href="#">7000-08101-2110200</a>				90-degree female				25	10	20	[6.5]
<a href="#">7000-08061-2110500</a>				Axial female			Gray	32	10	-	5
<a href="#">7000-08101-2110500</a>				90-degree female				25	10	20	[16.4]
<a href="#">7000-08061-2111000</a>			Axial female	Gray	32		10	-	10		
<a href="#">7000-08101-2111000</a>			90-degree female		25		10	20	[32.8]		
<a href="#">7000-08941-6950150</a>		5	Axial female	PUR/PP	Black	34	10	-	1.5		
<a href="#">7000-08951-6950150</a>			90-degree female			28	10	21	[4.9]		
<a href="#">7000-08941-6950500</a>			Axial female			Black	34	10	-	5	
<a href="#">7000-08951-6950500</a>			90-degree female				28	10	21	[16.4]	
<a href="#">7000-08941-6951000</a>			Axial female			Black	34	10	-	10	
<a href="#">7000-08951-6951000</a>			90-degree female				28	10	21	[32.8]	

### Dimensions



**Axial female**



**90-degree female**

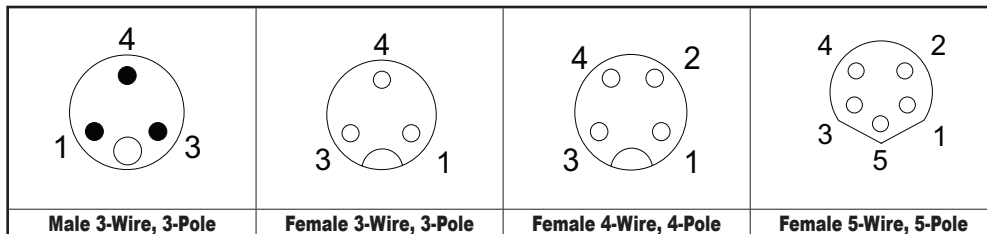
See our website: [www.AutomationDirect.com](http://www.AutomationDirect.com) for complete engineering drawings.

# Connection Cables Sensor and Signal

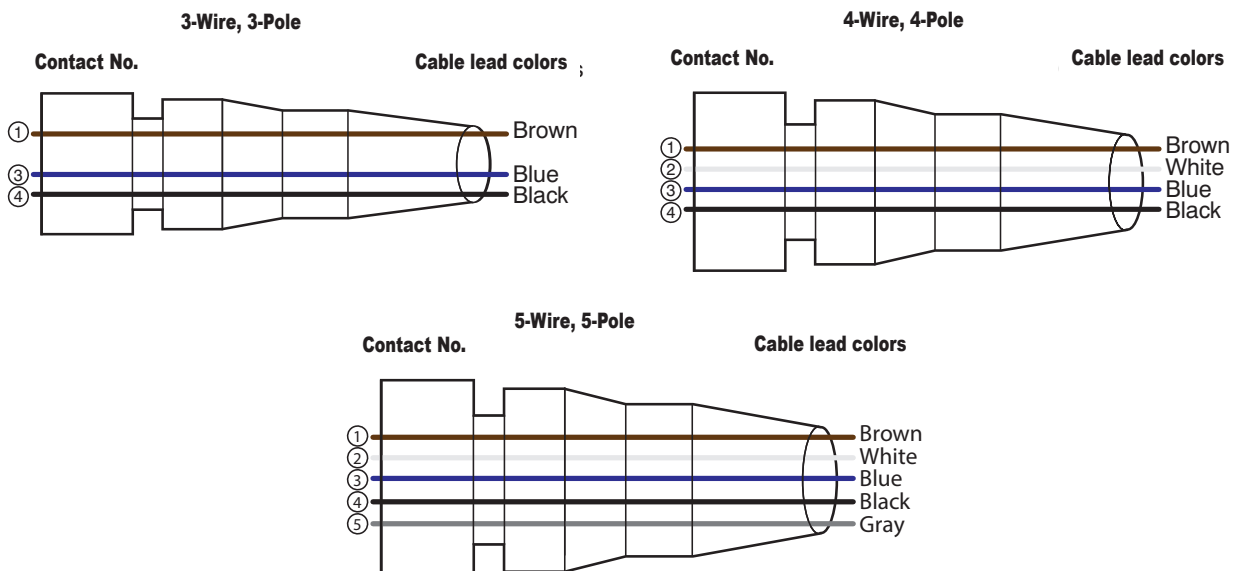
Specifications					
Model	CD08 Series		7000 Series		
Type	3-Wire, 3-Pole	4-Wire, 4-Pole	3-Wire, 3-Pole	4-Wire, 4-Pole	5-Wire, 5-Pole
Max Voltage	50 VAC / 60 VDC				30 VAC/VDC
Max Voltage - UL Rating	N/A		30 VAC/VDC		
Max Current Per Contact	4A			3A	
Protection Degree	IP65 / IP66K / IP67			IP67	
Nut Material	Male threads are nickel-plated brass Female threads are nickel-plated die-cast zinc				
Cable Jacket/Wire Insulation Material	PUR-PVC/PVC, PVC/PVC, PUR/PVC, or PUR/PP			PUR/PP	
Contacts Material	Copper Alloy				
Tightening Torque	≤ 0.4 N·m [≤ 0.34 ft-lb]				
Conductors Cross Section	0.25mm <sup>2</sup> [24 AWG]				
Outer Cable Diameter Ø For PUR/PVC or PVC/PVC or PUR-PVC/PVC	3-Wire 4.5mm [0.18in] / 4-Wire 4.8mm [0.19in]				
Outer Cable Diameter Ø For PUR/PP	3-Wire 4.1mm [0.16in] / 4-Wire 4.5mm [0.18in]			5-Wire 4.7mm [0.19in]	
Temperature Range - Stationary Use	PUR-PVC/PVC, PVC/PVC and PUR/PVC -30 to +80 °C [-22 to +176 °F]; PUR/PP -40 to +80 °C [-40 to +176 °F]				
Temperature Range - Flexible Use	PUR-PVC/PVC, PVC/PVC and PUR/PVC -5 to +80 °C [+23 to +176 °F]; PUR/PP -25 to +80 °C [-13 to +176 °F]				
Min Bend Radius	Stationary use: 5 x cable diameter Flexible use: 10 x cable diameter				
Approvals*	CE, cCSAus		cULus, CE, UKCA, cCSAus		cURus

\*To obtain the most current agency approval information, see the Agency Compliance & Certifications Checklist section on the specific part number's web page.

## Contact Diagrams



## Wiring Diagrams





# Field-Wireable Connectors - Sensor and Signal

## M8 A-coded Insulation Displacement Connector (IDC)

### Features

- IDC (insulation displacement connection) allows quick termination without stripping conductors
- Various cable gauges and diameters accepted
- IP67 rated once properly assembled



**7000-08331-0000000**

M8 A-coded Insulation Displacement Connector (IDC)						
Part Number	Price	Number of Wires, Pins	Connection Type	Conductor Size	Outside Cable Ø	Drawing Link
<a href="#">7000-08325-0000000</a>		3-Wire, 3-Pin	Axial male with male threads	24–20 AWG [0.25–0.5mm <sup>2</sup> ]	2.5–5.0mm [0.098–0.19in]	<a href="#">PDF</a>
<a href="#">7000-08331-0000000</a>			Axial female with female threads	26–22 AWG [0.14–0.34mm <sup>2</sup> ]	2.5–5.1 mm [0.098–0.20in]	<a href="#">PDF</a>
<a href="#">7000-08371-0000000</a>		4-Wire, 4-Pin	Axial male with male threads			
<a href="#">7000-08351-0000000</a>		4-Wire, 4-Pin	Axial female with female threads			<a href="#">PDF</a>

Specifications			
<b>Coding</b>	A-coded		
<b>Model</b>	08325	08331, 08371	08351, 08391
<b>Max Voltage</b>	48 VAC / 60 VDC		32 VAC/VDC
<b>Max Current per Contact</b>	4A		
<b>Temperature Range</b>	-25 to +80 °C [-13 to +176 °F]		-25 to +85 °C [-13 to +185 °F]
<b>Protection Degree</b>	IP65 IP67		IP67
<b>Housing Material</b>	Nylon		Polyamide (PA)
<b>Locking Material</b>	Zinc die-cast		Zinc die-cast, nickel-plated
<b>Weight</b>	0.02 lbs	0.01 lbs	0.03 lbs
<b>Approvals*</b>	CE, UR		cURus

\* To obtain the most current agency approval information, see the Agency Compliance & Certifications Checklist section on the specific part number's web page.

### Pin Assignments

LEGEND	
■	MALE PIN ON CONNECTOR
○	FEMALE PIN ON CONNECTOR
(	FIELD CONNECTION TERMINAL

