



MTR, MTR2, MTRJ Series AC Motor Accessories – 1-Phase

56C/56HC Frame TEFC Motors – 1-phase – 0.33 to 2 hp – Motor Accessories

Start Capacitors

1-phase motors use capacitors to provide starting torque when power is first applied to the motor. AutomationDirect offers *spare/replacement* starting capacitors for our 1-phase IronHorse motors.

Run Capacitors

In addition to the start capacitors and centrifugal switches, IronHorse 1-1/2 and 2 hp 1-phase motors also have run capacitors which allow the motors to develop higher running torque, greater efficiency, and improved power factor. We offer *spare/replacement* run capacitors for 1-phase IronHorse motors.

Centrifugal Switches

The start capacitors are no longer needed once the motors begin turning, so they are then taken out of the circuit by a centrifugal switch. We also offer *spare/replacement* switches for our motors.

Stationary Switches

MTR2 series motors have a separate stationary switch that works with the centrifugal switch; both switches are required.

(MTR series motors have only the one centrifugal switch.)



Start Capacitor
[MTA-CAP-02](#) **Run Capacitor**
[MTA-CAP-06](#)



Junction Box
[MTAR-JBOX-56](#)



Junction Box
[MTA2-JBOX-56](#)



Fan
[MTA2-FAN-56](#)



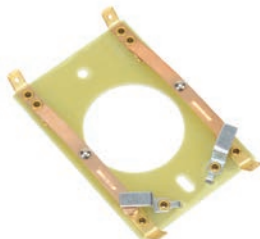
Centrifugal Switch [MTA-CSW-01](#)



Fan Shroud
[MTAR-SHROUD-56](#)



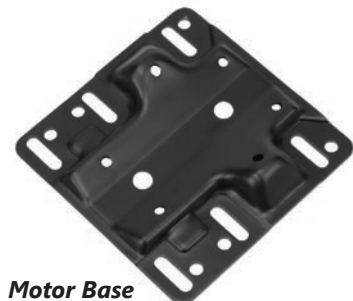
Fan Shroud
[MTA2-SHROUD-56](#)



Stationary Switch
[MTA-CSW-04](#)



Motor Base
[MTAR-BASE-56](#)



Motor Base
[MTA2-BASE-56](#)



AC Motor Accessories – 1-Phase

56C/56HC Frame TEFC Motors – 1-phase – 0.33 to 2 hp – Motor Accessories

MTR Series 1-phase Motor Spare/Replacement Parts (NOT for MTR2 Motors)*							
Part Number	Price	Accessory Type	Capacitance (µF)	Rated Voltage	Dimension Height x Ø (in [mm])	Applicable MTR Motor Number	MTR Motor HP : RPM
MTA-CAP-01		start capacitor	200	165	3.15 x 1.65 [80.0 x 41.9]	MTR-P33-1AB18	1/3 : 1800
MTA-CAP-02		start capacitor	250			MTR-P50-1AB18	1/2 : 1800
MTA-CAP-03		start capacitor	300			MTR-P75-1AB18	3/4 : 1800
MTA-CAP-08		start capacitor	400			MTR-001-1AB18	1 : 1800
MTAR-BASE-56		motor base	n/a	n/a	n/a	MTR-xxx-1ABxx	all
MTAR-JBOX-56		junction box					
MTAR-SHROUD-56		fan shroud					

* These accessories are spare/replacement components only for MTR series IronHorse motors.
Accessories for MTR series motors are not compatible with MTR2 series motors.

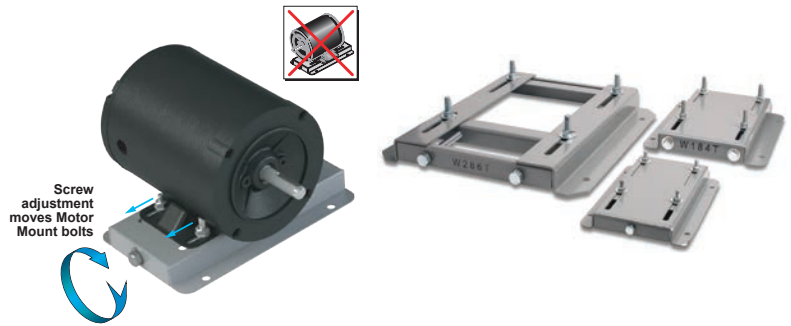
MTR2 Series 1-phase Motor Spare/Replacement Parts (NOT for MTR Motors)*							
Part Number	Price	Accessory Type	Capacitance (µF)	Rated Voltage	Dimension Height x Ø (in [mm])	Applicable MTR2/MTRJ Motor Number	MTR2/MTRJ Motor HP : RPM
MTA-CAP-10		start capacitor	200	165	2.80 x 1.46 [71.1 x 37.1]	MTR2-P33-1AB36	1/3 : 3600
MTA-CAP-11		start capacitor	300			MTRJ-001-1AB36J	1 : 3600
MTA-CAP-12		start capacitor	400			MTR2-P33-1AB18	1/3 : 1800
MTA-CAP-13		start capacitor	500			MTR2-P50-1AB36	1/2 : 3600
MTA-CAP-14		run capacitor	40	250	3.38 x 1.81 [85.9 x 46.0]	MTRJ-1P5-1AB36J	1 1/2 : 3600
MTA-CAP-15		start capacitor	800	165	4.41 x 1.85 [112.0 x 47.0]	MTR2-002-1AB36J	2 : 3600
MTA-CAP-22		start capacitor	900	165	4.375 x 1.8125 [111.1 x 46.0]	MTRJ-002-1AB36J	2 : 3600
MTA-CAP-31		start capacitor	150	165	3.39 x 1.85 [86.1 x 47.0]	MTR2-1P5-1AB18	1-1/2 : 1800
MTA-CSW-03		centrifugal switch	n/a	125	n/a	MTR2-P50-1AB18	1/2 : 1800
MTA-CSW-04		stationary switch				MTR2-P75-1AB36	3/4 : 3600
MTA-CSW-08		centrifugal switch				MTRJ-002-1AB36J	2 : 3600
MTA2-BASE-56		motor base		n/a	n/a	MTR2-001-1AB18	3/4 : 1800
MTA2-FAN-56		fan	n/a	n/a	n/a	MTR2-001-1AB18	1 : 1800
MTA2-JBOX-56		junction box				MTR2-001-1AB36	1 : 3600
MTA2-SHROUD-56		fan shroud				MTR2-001-1AB36	1 : 3600
						MTRJ-P33-1AB36J	1/3 : 3600
					MTRJ-P50-1AB36J	1/2 : 3600	
					MTRJ-P75-1AB36J	3/4 : 3600	
					MTR2-xxx-1AB36	all 3600 rpm	
					MTR2-xxx-1ABxx	all	
					MTR2-xxx-1AB18	all 1800 rpm	
					MTR2-xxx-1ABxx	all	
					MTRJ-xxx-1ABxx	all	

* These accessories are spare/replacement components only for MTR2 series IronHorse motors.
Accessories for MTR2 series motors are not compatible with MTR series motors.

STABLE™ Motor Slide Bases

Mounting Slide Bases for 56 to 449T NEMA Motors Features

- Allows adjustment of motor mounting position
- Slide direction is perpendicular to motor shaft
- Double adjusting screws for frames 182T-449T
- Manufactured to precise dimensional standards
- Dimensionally interchangeable with existing major makes
- Heavy-duty steel construction
- Painted with oven-baked primer for better adhesion of customer's paint
- All "D" bolts (motor mounting bolts) are fixed to the exact motor foot pattern
- All "D" bolts are welded into position to prevent spinning and dropping from slots
- Nuts and washers are provided for securing the motor to the slide base



STABLE Motor Slide Bases for 3-Phase Motors

Part Number (MTA-BASE-xxx)	Price	Fits Frame Type	Product Wt. (lb)	Fits Motor					Drawing Links			
				IronHorse	Leeson®	WEG (Part number ending in...)	Marathon					
					WashGuard®		microMAX, Max +, Black Max, Blue Max, SyMAX	XRI GP & NEMA Premium, Jet Pump		Globetrotter		
W56		56*	2.8	MTPM-P3x-1x18							PDF	
				MTPM-P5x-1x18								
				MTPM-P7x-1x18								
				MTPM-0xx-1x18								
				MTPM-1xx-1x18								
				MTR(2)(P)-xxx-xxxxx*								
				MTRJ(P)-xxx-xxxxx								
				MTSN-P33-3BD18								
				MTSN-P33-3BD18R								
				MTSN-P33-3BD36	112427.00							
				MTSP-P33-3BD18	112428.00							
				MTSP-P33-3BD18R	112429.00							
				MTSP-P33-3BD18R	112430.00							
				MTSP-P33-3BD36	113019.00							
				MTSP-P33-3BD36R	113023.00							
				MTSN-P50-3BD18	113473.00							
				MTSN-P50-3BD18R	113586.00							
				MTSN-P50-3BD36	113590.00							
				MTSP-P50-3BD12	113591.00							
				MTSP-P50-3BD18	113649.00				Y500			
				MTSP-P50-3BD18R	116644.00				Y502			
				MTSP-P50-3BD36	116645.00				Y360	E2000		
				MTSP-P50-3BD36R	119468.00				Y362	K705		
				MTSN-P75-3BD18	119469.00				Y364	G582		
				MTSN-P75-3BD18R	119471.00				Y280	K707		
				MTSN-P75-3BD36	119475.00				Y281	D393A		
				MTSP-P75-3BD12	119476.00			(...)56-S	Y282	D394A		
				MTSP-P75-3BD18	119478.00			(...)56C-S	Y592(-A772)	K721A		
				MTSP-P75-3BD18R	119480.00				Y534(-A772)	G584A		
				MTSP-P75-3BD36	119482.00				Y535(-A772)	D395A		
				MTSP-P75-3BD36R	119483.00				SY001	G585A		
				MTSN-001-3BD18	191202.00				SY003	J066A		
				MTSN-001-3BD18R	191204.00				SY004			
				MTSN-001-3BD36	191205.00				SY005			
				MTSP-001-3BD18	191206.00							
				MTSP-001-3BD18R	191207.00							
				MTSP-001-3BD36	191208.00							
				MTSP-001-3BD36R	191560.00							
				MTSN-1P5-3BD18	191561.00							
				MTSN-1P5-3BD18R	191562.00							
				MTSN-1P5-3BD36	191563.00							
				MTSP-1P5-3BD18	191564.00							
				MTSP-1P5-3BD18R	191569.00							
				MTSP-1P5-3BD36								
				MTSP-1P5-3BD36R								
				MTSN-002-3BD18								
				MTSN-002-3BD18R								
				MTSN-002-3BD36								
				MTSP-002-3BD18								
				MTSP-002-3BD18R								
MTSP-002-3BD36												
MTSP-002-3BD36R												

* IronHorse MTR2 56HC motors have double-punched bases to fit on slide base MTA-BASE-W56.

STABLE™ Motor Slide Bases

STABLE Motor Slide Bases for 3-Phase Motors										
Part Number (MTA-BASE- xxx)	Price	Fits Frame Type	Product Wt. (lb)	Fits Motor						Drawing Links
				IronHorse	Leeson®	WEG (Part number ending in...)	Marathon			
					WashGuard®		microMAX, Max+, Black Max, Blue Max, SyMAX	XRI GP & NEMA Premium, Jet Pump	Globetrotter	
W143T		143T/ TC	4.6	MTCP2-001-3BD18(C) MTCP2-1P5-3BD36 MTSN-1P5-3BD36-14 MTSP-1P5-3BD36-14 MTSP-1P5-3BD36R-14	191487.00 191565.00		Y536(-A772)	E2001A	-	PDF
W145T		145T/ TC	5.1	MTCP2-001-3BD12 MTCP2-1P5-3BD18(C) MTCP2-002-3BD18(C) MTCP2-002-3BD36 MTSP-001-3BD12 MTSN-1P5-3BD18-14 MTSN-1P5-3BD18R-14 MTSP-1P5-3BD18-14 MTSP-1P5-3BD18R-14 MTSN-002-3BD18-14 MTSN-002-3BD18R-14 MTSN-002-3BD36-14 MTSP-002-3BD18-14 MTSP-002-3BD18R-14 MTSP-002-3BD36-14 MTSP-002-3BD36R-14	121866.00 121868.00 121870.00 122182.00 122184.00 122185.00 191490.00 191491.00 191570.00	(...) 145T-S (...) 145TC-S	Y366 Y368 Y284 Y285 Y537 Y538(-A772) Y551(-A772)	E2002 E2004A E2007A	-	PDF
W182T		182T/ TC	9.2	MTCP2-1P5-3BD12 MTCP2-003-3BD18(C) MTCP2-003-3BD36 MTSP-1P5-3BD12 MTSN-003-3BD18-18 MTSN-003-3BD36-18 MTSP-003-3BD18-18 MTSP-003-3BD36-18	132196.00 132198.00		Y1999 Y286A Y541A(-A772)	-	GT0010A GT1010A	PDF
W184T		184T/ TC	10	MTCP2-002-3BD12 MTCP2-005-3BD18(C) MTCP2-005-3BD36 MTF-00x-1C18 MTSP-002-3BD12 MTSP-005-3BD18 MTSP-005-3BD36	132197.00 132200.00 132201.00 132440.00		Y1372 Y540(-A772) Y543A(-A772) SY067	-	GT0013A GT1013A GT1210A GT1212A GT1213A	PDF
W213T		213T/ TC	13	MTCP2-003-3BD12 MTCP2-7P5-3BD18(C) MTCP2-7P5-3BD36 MTSP-003-3BD12 MTSP-7P5-3BD18	140819.00 140822.00 141266.00		Y994 Y542(-A772) Y545(-A772) SY068	-	GT0016A GT1016A GT1216A	PDF
W215T		215T/ TC	15	MTCP2-005-3BD12 MTCP2-010-3BD18(C) MTCP2-010-3BD36 MTSP-005-3BD12 MTSP-010-3BD18	140820.00 140821.00		Y996 Y544(-A772) Y547(-A772) SY069	-	GT0019A GT1019A GT1218A GT1219A	PDF
W254T		254T/ TC	18	MTCP2-7P5-3BD12 MTCP2-015-3BD18(C) MTCP2-015-3BD36 MTSP-015-3BD18	-		Y546(-A772) Y549(-A772)	-	GT0059 GT1022A GT1222A	PDF
W256T		256T/ TC	19	MTCP2-010-3BD12 MTCP2-020-3BD18(C) MTCP2-020-3BD36 MTSP-020-3BD18	-		Y548(-A772)	-	GT0062 GT1025A GT1225A	PDF
W284T		284T/ TC	20	MTCP2-015-3BD12 MTCP2-025-3BD18(C)	-		-	-	GT0065 GT1028A	PDF
W286T		286T/ TC	21	MTCP2-020-3BD12 MTCP2-030-3BD18(C)	-		-	-	GT0067 GT1031A	PDF

* IronHorse MTR2 56HC motors have double-punched bases to fit on slide base [MTA-BASE-W56](#).

STABLE™ Motor Slide Bases

STABLE Motor Slide Bases for 3-Phase Motors										
Part Number (MTA-BASE- xxx)	Price	Fits Frame Type	Product Wt. (lb)	Fits Motor						Drawing Links
				IronHorse	Leeson®	WEG (Part number ending in...)	Marathon			
					WashGuard®		microMAX, Max+, Black Max, Blue Max, SyMAX	XRI GP & NEMA Premium, Jet Pump	Globetrotter	
W324T		324T/ TC	30	MTCP2-040-3BD18(C)	-		Y571(-A774) Y513(-A775)	-	GT0073 GT1034A	PDF
W326T		326T/ TC	31	MTCP2-050-3BD18(C)	-		Y572(-A774) Y514(-A775)	-	GT0077 GT1037A	PDF
W364T		364T/ TC	43	MTCP2-060-3BD18(C)	-		Y573(-A774) Y515(-A775)	-	GT1040A	PDF
W365T		365T/ TC	43	MTCP2-075-3BD18(C)	-		Y574(-A774) Y516(-A775)	-	GT1043A	PDF
W404T		404T/ TC	58	-	-		-	-	-	PDF
W405T		405T/ TC	60	MTCP2-100-3BD18(C)	-		Y575(-A774) Y517(-A775)	-	GT1046A	PDF
W444T		444T	63	MTCP2-125-3BD18	-		-	-	-	PDF
W445T		445T	65	MTCP2-150-3BD18	-		-	-	-	PDF
W447T		447T	89	MTCP2-200-3BD18	-		-	-	-	PDF
W449T		449T	94	MTCP2-250-3D18 MTCP2-300-3D18	-		-	-	-	PDF

* IronHorse MTR2 56HC motors have double-punched bases to fit on slide base [MTA-BASE-W56](#).

STABLE™ Motor Slide Bases

Mounting Slide Bases for 56 to 215T NEMA Motors Features

STABLE Motor Slide Bases for 1-phase Motors										
Part Number	Price	Fits Frame Type	Product Wt. (lb)	Fits Motor						
				IronHorse	Leeson®		Marathon			
					Washguard®	Marathon DP GP (NEMA Service Factor)	Marathon DP Air Compressor	Fan & Blower	Marathon TE GP 4-in-1	
MTA-BASE-W56		56*	2.8	MTR2-xxx-1AB18 MTR2-xxx-1AB36 MTPM-xxx-1L18 MTPM-xxx-1M18	112431.00	G915A C167A C187A E261A E268A	D010	C216	G570	
					112527.00			C1153	D311	
					112528.00			C1155	G571	
					112529.00			B319	D312	
					113583.00			D118	G572	
					114311.00			C1158	D313	
					114313.00			C235	G573	
					114317.00			D115	D314	
					191475.00			C1160	G574	
					191477.00			C1161	D315	
					191479.00			B352	G575	
									D316	
					MTA-BASE-W143T				143T / TC	4.6
MTA-BASE-W145T		145TC / TC	5.1	-	-	I127	-	-	-	
MTA-BASE-W182T		182T / TC	9.2	-	-	-	-	-	-	
MTA-BASE-W184T		184 / TC	10	MTF-00x-1C18	-	-	-	-	-	
MTA-BASE-W213T		213T / TC	13	-	-	-	-	-	-	
MTA-BASE-W215T		215T T TC	15	-	-	-	-	-	-	

* IronHorse MTR2 56HC motors have double-punched bases to fit on slide base [MTA-BASE-W56](#).