

GSD Series DC Drives Accessories

GSDA Accessories for GSD Series DC Drives – Selection & Specifications

GSDA Accessories for GSD Series DC Drives			
Model	Price	Description	For Use With
<u>GSDA-5K</u>	<--->	IronHorse GSD series speed potentiometer kit, replacement, output up to input voltage, 5k ohm, 0.5W. For use with all GSD series DC drives. Includes potentiometer, knob, 0-100% dial and mounting hardware.	GSD - all
<u>GSDA-ACCDEC-4</u>	<--->	IronHorse GSD4 series acceleration/deceleration module, for use with GSD4 series DC drives.	GSD4-xxx-xC
<u>GSDA-AI-A</u>	<--->	IronHorse GSD series analog input module, 1-channel, current, isolated, input current signal range(s) of 4-20 mA.	GSD4-24x-xC (open-frame) GSD5-240-10C (open-frame) GSD6 (open-frame)
<u>GSDA-AI-A8</u>	<--->	IronHorse GSD8 series relay/analog combo module, Analog Input: 1-channel, current, Analog Output: 1-channel, current, Discrete Output: 1-point, relay, (1) Form C (SPDT) relay. For use with multiple GSD8 series DC drives.	All GSD8 drives except GSD8-240-5C
<u>GSDA-AI-V4</u>	<--->	IronHorse GSD4 series analog input module, 1-channel, current/voltage, isolated, input current signal range(s) of 4-20 mA, input voltage signal range(s) of 0-5 VDC, 0-250 VDC.	GSD4-240-xC (240V open-frame)
<u>GSDA-AI-V4A</u>	<--->	IronHorse GSD4A series analog input module, 1-channel, current/voltage, isolated, input current signal range(s) of 4-20 mA, input voltage signal range(s) of 0-5 VDC, 0-250 VDC.	All GSD4A drives
<u>GSDA-AI-V5</u>	<--->	IronHorse GSD5 series analog input module, 1-channel, current/voltage, isolated, input current signal range(s) of 4-20 mA, input voltage signal range(s) of 0-5 VDC, 0-250 VDC.	GSD5-240-10C (open-frame)
<u>GSDA-CM-8</u>	<--->	IronHorse GSD8 series communication module, ASCII, 1 port, (1) RS-232/RS-485 (RJ45) port(s). For use with IronHorse GSD8-240-5C-D and GSD8-240-10C-D DC drives.	All GSD8 drives except GSD8-240-5C
<u>GSDA-DP</u>	<--->	IronHorse GSD series digital potentiometer, 120/240 VAC input, bipolar/unipolar, NEMA 4X, aluminum housing. For use with multiple AC and DC drives.	GSD1, GSD4(A), GSD5, GSD6, GSD7
<u>GSDA-DP-D</u>	<--->	IronHorse GSD series PID digital potentiometer, 120/240 VAC input, voltage, NEMA 4X, IP67, aluminum housing. For use with multiple AC and DC drives.	GSD1 - all, GSD3-24A-xxx (12-24V), GSD4 - all, GSD5 - all, GSD6 - all, GSD7 - all
<u>GSDA-DP-S</u>	<--->	IronHorse signal conditioner, isolated, current, voltage or PWM input, current, voltage or PWM output, 120/240 VAC operating voltage, IP67, 1/8 DIN mount, screw terminals.	GSD1 - all, GSD3-24A-xxx (12-24V), GSD4 - all, GSD5 - all, GSD6 - all, GSD7 - all
<u>GSDA-MREV</u>	<--->	IronHorse GSD series manual reverse switch, 10A, field installable, screw terminals. For use with all GSD series DC drives.	GSD3 - all GSD4/4A - all GSD5 - all GSD8 - all
<u>GSDA-HTSNK-4</u>	<--->	IronHorse GSD series heatsink, for use with GSD4 series DC drives.	GSD4-24x-xC (open-frame)
<u>GSDA-HTSNK-4A</u>	<--->	IronHorse GSD4A series heatsink, for use with IronHorse GSD4A-240-2C and GSD4A-240-6C DC drives.	All GSD4A drives
<u>GSDA-PU2E</u>	<--->	IronHorse encoder, 5-24 VDC, NPN open collector output, 1/10/20 ppr, 61mm diameter body, NEMA 12, IP52, 6ft cable length, pigtail. For use with GSD8 series DC drives. Mounting hardware and (3) magnets included.	All GSD8 drives, GSDA-DP-D, GSD4A drive with GSDA-RTU-4A
<u>GSDA-PU2R</u>	<--->	IronHorse encoder, 5-24 VDC, NPN open collector output, 1/10/20 ppr, 61mm diameter body, NEMA 3R, IP14, 6ft cable length, pigtail. For use with GSD8 series DC drives. Mounting hardware and (3) magnets included.	All GSD8 drives, GSDA-DP-D, GSD4A drive with GSDA-RTU-4A
<u>GSDA-RTU-4A</u>	<--->	IronHorse GSD4A series communication module, Modbus RTU, 1 port, (1) RS-485 (3-pin terminal) port(s). For use with IronHorse GSD4A-240-2C and GSD4A-240-6C DC drives.	All GSD4A drives

NOTE: All GSDA Accessories are RoHS compliant.

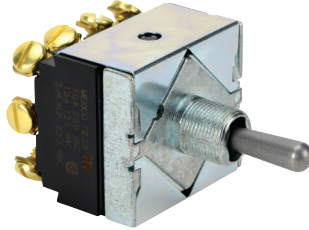
GSD Series DC Drives Accessories

GSDA-MREV

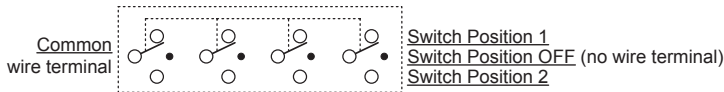
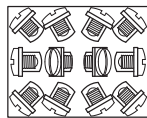
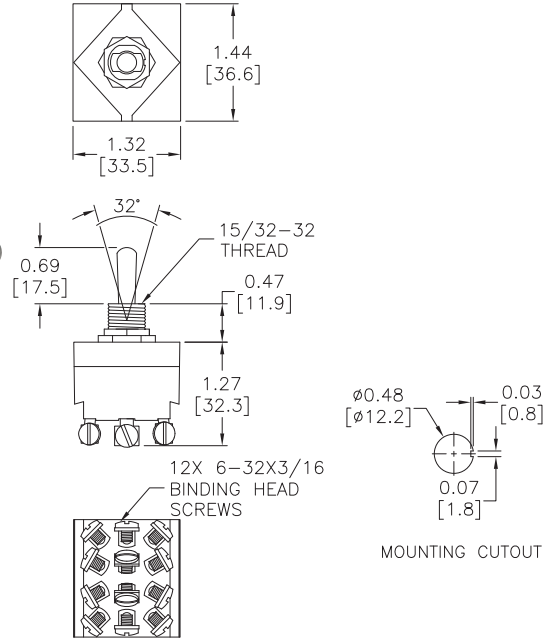
For use with DC drives: *GSD3 (all), GSD4/4a (all), GSD5 (all), GSD8 (all)*

The GSDA-MREV Manual Reversing Switch is a 4PDT 10A-rated center-blocked manual switch that can be used with IronHorse GSD series DC drives to manually reverse the direction of a DC motor. When switched between the Forward and Reverse positions, the blocked center position causes a delay which protects the DC drive from any voltage that may be on the motor armature terminals. The center position is OFF/NEUTRAL and is not connected to a wiring terminal. If GSDA-MREV is used in conjunction with a NEMA4x model drive, a user supplied enclosure separate from the drive must be used.

Use the GSDA-MREV switch to manually reverse a DC motor without damaging the drive.



Dimensions (in [mm])



GSDA-PU2E/GSDA-PU2R

For use with all GSD8 drives, GSDA-DP-D, and GSD4A drives with GSDA-RTU-4A

The PU2E and PU2R pickups are an economical way to monitor motor speed. The PU2E is designed for indoor use, while the PU2R is for wash down or outdoor use. Both provide one pulse per revolution. They operate from a +5V power supply, producing a 5V square wave whose frequency is proportional to speed. This signal is fed into the device speed control as a speed or position reference for the microprocessor.

GSDA-PU2E/PU2R installation and wiring information is included in the GSDA-PU2E/PU2R Accessory Data Sheet.



GSDA-RTU-4A

For use with all GSD4A DC drives

The GSDA-RTU-4A option card utilizes Modbus RTU, an RS-485 serial communication protocol, to establish master-slave communication between the GSD4A DC Drives and a variety of intelligent devices. A single master device can send commands to individually addressed GSD4A DC Drives that are wired together. Commands include set speed, acceleration, deceleration, inhibit, power up configuration settings, and a variety of diagnostic features.

GSDA-RTU-4A installation and wiring information is included in the GSDA-RTU-4A User Manual.

