



Grooved Shafts

303 Stainless Steel



Features

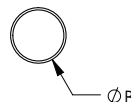
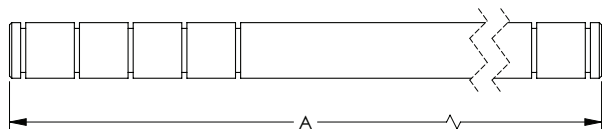
- Retaining ring grooved
- Groove spacing to fit typical bearings
- RB-83 Hardness
- 10RMS Surface Finish
- ± 0.010" length tolerance
- + 0.0000" / - 0.0002" diameter tolerance for 0.250 to 0.500
- + 0.0000" / - 0.0004" diameter tolerance for 0.625 to 1.000



Grooved Shafts - 303 Stainless Steel						
Part Number	Groove Spacing	Number of Grooves	A	ØB	Price	Weight (lb)
GSS04-3	0.250	7	3.0	0.250	Retired	0.04
GSS04-6			6.0		Retired	0.08
GSS04-10			10.0		Retired	0.14
GSS04-12			12.0		Retired	0.17
GSS06-3	0.375	7	3.0	0.375	Retired	0.10
GSS06-6			6.0		Retired	0.19
GSS06-10			10.0		Retired	0.32
GSS06-12			12.0		Retired	0.38
GSS08-3	0.437	7	3.0	0.500	Retired	0.17
GSS08-6			6.0		Retired	0.34
GSS08-10			10.0		Retired	0.57
GSS08-12			12.0		Retired	0.68
GSS10-3	0.500	6	3.0	0.625	Retired	0.26
GSS10-6		7	6.0		Retired	0.52
GSS10-10			10.0		Retired	0.87
GSS10-12			12.0		Retired	1.05
GSS12-3	0.562	6	3.0	0.750	Retired	0.38
GSS12-6			6.0		Retired	0.75
GSS12-10		7	10.0		Retired	1.25
GSS12-12			12.0		Retired	1.50
GSS16-3	0.562	6	3.0	1.000	Retired	0.67
GSS16-6			6.0		Retired	1.33
GSS16-10		7	10.0		Retired	2.22
GSS16-12			12.0		Retired	2.67

Note: All measurements in inches

Dimensions



See our website www.AutomationDirect.com for complete Engineering drawings.

Grooved Shafts

Accessories



Features

- 15-7 PH Stainless Steel E-rings
- Stainless Steel shims



Grooved Shaft Accessories			
Part Number	Description	Price	Weight (lb)
<u>GSS04-RPK</u>	6 Retainer Rings and 6 Shims for GSS04-xx series Grooved Shafts	Retired	0.02
<u>GSS06-RPK</u>	6 Retainer Rings and 6 Shims for GSS06-xx series Grooved Shafts	Retired	0.03
<u>GSS08-RPK</u>	6 Retainer Rings and 6 Shims for GSS08-xx series Grooved Shafts	Retired	0.04
<u>GSS10-RPK</u>	6 Retainer Rings and 6 Shims for GSS10-xx series Grooved Shafts	Retired	0.04
<u>GSS12-RPK</u>	6 Retainer Rings and 6 Shims for GSS12-xx series Grooved Shafts	Retired	0.05
<u>GSS16-RPK</u>	6 Retainer Rings and 6 Shims for GSS16-xx series Grooved Shafts	Retired	0.05