



301 Series Water Valves (Stainless Steel)



NS301YF24C3BC9
Valve Shown

GC Valves 301 Series water valves are an excellent choice for potable water applications up to 400psi. Valves have 303 stainless steel bodies with 1/4 inch NPT ports. They are available with three orifice sizes and solenoid voltages of 120VAC, 24VAC or 24VDC solenoids.

Features

- 2-Ports (2-way), 2-position
- Normally closed (N.C.) configuration
- Direct acting operator
- Zero differential action
- 18mm (DIN 43650A) style wiring plug
- 1/4" NPT ports
- 120VAC, 24VAC or 24VDC solenoids
- Made in the USA



Also, see our website
www.AutomationDirect.com
for a variety of fitting options



Certified to
NSF/ANSI 61



Made
in the
USA

301 Series Water Valves									
Model	NS301YF02C3BEZ	NS301YF02C3BD5	NS301YF02C3BC9	NS301YF24C3BEZ	NS301YF24C3BD5	NS301YF24C3BC9	NS301YF16C3BEZ	NS301YF16C3BD5	NS301YF16C3BC9
Price									
Weight (lbs)	1.2	1.2	1.2	1.2	1.2	1.2	1.2	1.2	1.2
Valve Type	2-Ports (2-way), 2-position								
Acting	Direct acting, normally closed								
Port Size	1/4" FNPT	1/4" FNPT	1/4" FNPT	1/4" FNPT	1/4" FNPT	1/4" FNPT	1/4" FNPT	1/4" FNPT	1/4" FNPT
Orifice Size	1/4"	1/8"	3/32"	1/4"	1/8"	3/32"	1/4"	1/8"	3/32"
Cv	0.85	0.36	0.21	0.85	0.36	0.21	0.85	0.36	0.21
Media	Water								
Pressure Range	0-50 psi	0-200 psi	0-400 psi	0-50 psi	0-200 psi	0-400 psi	0-20 psi	0-140 psi	0-200 psi
Voltage (± 10%)	120/110 VAC 50/60 Hz	120/110 VAC 50/60 Hz	120/110 VAC 50/60 Hz	24VAC 50/60 Hz	24VAC 50/60 Hz	24VAC 50/60 Hz	24VDC	24VDC	24VDC
Inrush AC	54VA						-		
Power Consumption	10W	10W	10W	10W	10W	10W	10W	10W	10W
Max Freq	Cannot be used in PWM (pulse width modulation) applications								
Insulation	Class N (200°C - 392°F)								
Min Response	5-15 ms						8-23 ms		
Temperature	32°F to 125°F (0°C to 51.7°C); Max. Fluid Temp. 295°F (146.1°C)								
Lubrication	Not required								
Protection	NEMA 4/4X Encapsulated								
Connection	18mm (DIN 43650A) terminal								
Construction	303 Stainless steel body; NSF Approved EPDM seals; Stainless Steel orifice								
Life Cycle	5 Million								
Agency Approvals	NSF/ANSI - 61-G/NSF-372, CE, CSA, UL Recognized								

* To obtain the most current agency approval information, see the Agency Approval Checklist section on the specific part number's web page.

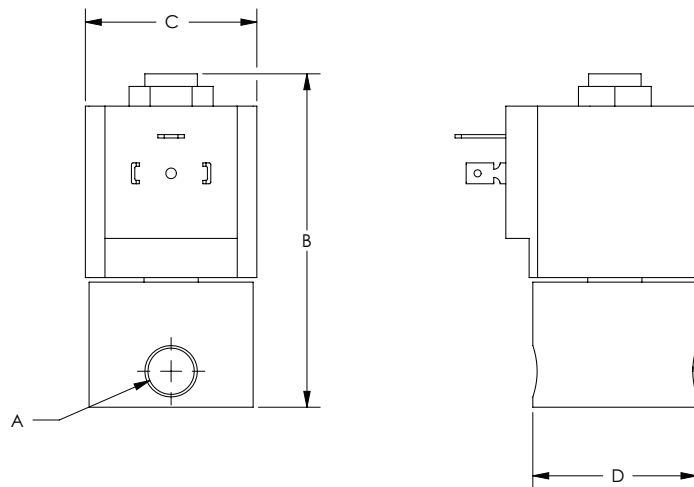


301 Series Water Valves (Stainless Steel)

Dimensions

inches [mm]




301 Series Water Valve Dimensions				
Part No.	A	B	C	D
<u>NS301YF02C3BE7</u>	1/4 NPT	3.15 [80.0]	1.62 [41.1]	1.55 [39.4]
<u>NS301YF02C3BD5</u>	1/4 NPT	3.15 [80.0]	1.62 [41.1]	1.55 [39.4]
<u>NS301YF02C3BC9</u>	1/4 NPT	3.15 [80.0]	1.62 [41.1]	1.55 [39.4]
<u>NS301YF24C3BE7</u>	1/4 NPT	3.15 [80.0]	1.62 [41.1]	1.55 [39.4]
<u>NS301YF24C3BD5</u>	1/4 NPT	3.15 [80.0]	1.62 [41.1]	1.55 [39.4]
<u>NS301YF24C3BC9</u>	1/4 NPT	3.15 [80.0]	1.62 [41.1]	1.55 [39.4]
<u>NS301YF16C3BE7</u>	1/4 NPT	3.22 [81.8]	1.62 [41.1]	1.55 [39.4]
<u>NS301YF16C3BD5</u>	1/4 NPT	3.22 [81.8]	1.62 [41.1]	1.55 [39.4]
<u>NS301YF16C3BC9</u>	1/4 NPT	3.22 [81.8]	1.62 [41.1]	1.55 [39.4]



See our website www.AutomationDirect.com for complete Engineering drawings.






301 Series Water Valve Accessories

301 Series Water Valve Accessories				
Kit Photo	Part No.	Description	Price	Weight (lbs)
	<u>KS301AF02E7-NSF</u>	GC Valves rebuild kit, for use with NS301 series valves ending BE7, includes plunger-seat disc-spring assembly, plunger tube, operator o-ring and body o-ring.		0.3
	<u>KS301AF02C3-NSF</u>	GC Valves rebuild kit, for use with NS301 series valves ending BC9 and BD5, includes plunger-seat disc-spring assembly, plunger tube, operator o-ring and body o-ring.		0.3
	<u>K301C3-NSF</u>	GC Valves repair kit, for use with NS301 series valves ending BC9 and BD5, includes seat disc, body o-ring and operator o-ring.		0.2



Water Valve Accessories - Replacement Coils

Water Valve Accessory Coils									
Coil Photo	Part No.	Voltage Rating	Power Rating	Insulation	Connection	Cable Length	Fits Valve Series	Price	Weight (lbs)
	<u>HS4YN02</u>	120VAC	10W	Class N (200°C - 392°F)	18mm (DIN 43650A) style wiring plug	N/A	NS201 and NS301 valves		0.6
	<u>HS4YN04</u>	240VAC	10W	Class N (200°C - 392°F)	18mm (DIN 43650A) style wiring plug	N/A	NS201 and NS301 valves		0.6
	<u>HS4YN24</u>	24VAC	10W	Class N (200°C - 392°F)	18mm (DIN 43650A) style wiring plug	N/A	NS201 and NS301 valves		0.6
	<u>HS4YN16</u>	24VDC	10W	Class N (200°C - 392°F)	18mm (DIN 43650A) style wiring plug	N/A	NS201, NS211 DC and NS301 valves		0.6
	<u>HS4GN02A24</u>	120VAC	10W	Class N (200°C - 392°F)	1/2 in conduit 24in 18AWG pigtail	24.0 in	NS201 and NS301 valves		0.6
	<u>HS4GN04A24</u>	240VAC	10W	Class N (200°C - 392°F)	1/2 in conduit 24in 18AWG pigtail	24.0 in	NS201 and NS301 valves		0.6
	<u>HS4GN24A24</u>	24VAC	10W	Class N (200°C - 392°F)	1/2 in conduit 24in 18AWG pigtail	24.0 in	NS201 and NS301 valves		0.6
	<u>HS4GN16A24</u>	24VDC	10W	Class N (200°C - 392°F)	1/2 in conduit 24in 18AWG pigtail	24.0 in	NS201, NS211 DC and NS301 valves		0.6
	<u>HS3YN02</u>	120VAC	8W	Class N (200°C - 392°F)	18mm (DIN 43650A) style wiring plug	N/A	NS211 AC valves		0.5
	<u>HS3YN04</u>	240VAC	8W	Class N (200°C - 392°F)	18mm (DIN 43650A) style wiring plug	N/A	NS211 AC valves		0.5
	<u>HS3YN24</u>	24VAC	8W	Class N (200°C - 392°F)	18mm (DIN 43650A) style wiring plug	N/A	NS211 AC valves		0.5
	<u>HS3GN02A24</u>	120VAC	88W	Class N (200°C - 392°F)	1/2 in conduit 24in 18AWG pigtail	24.0 in	NS211 AC valves		0.5
	<u>HS3GN04A24</u>	240VAC	8W	Class N (200°C - 392°F)	1/2 in conduit 24in 18AWG pigtail	24.0 in	NS211 AC valves		0.5
	<u>HS3GN24A24</u>	24VAC	8W	Class N (200°C - 392°F)	1/2 in conduit 24in 18AWG pigtail	24.0 in	NS211 AC valves		0.5