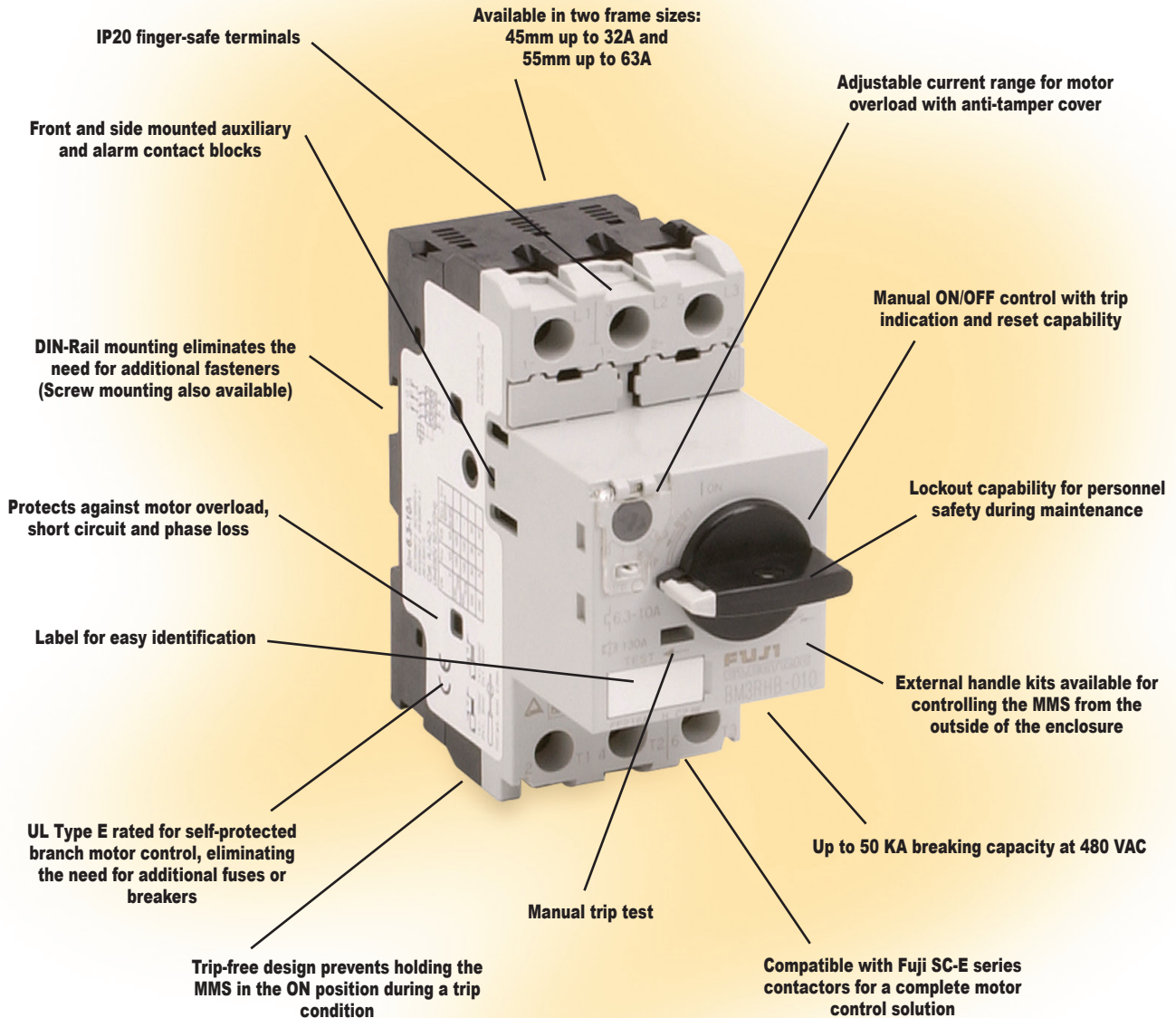


Fuji Duo Series Manual Motor Starters

The manual motor starter is a protective device for motor use that provides optimal protection by integrating the functions of a molded case circuit breaker and thermal overload relay into a compact unit. Since Fuji's MMS is UL listed for Category E self-protected motor control, it can be used for motor branch circuit protection without the need for additional protection such as

fuses or molded case circuit breakers. The MMS is available in a 32A version with a 45mm frame width, and a 63A version with a 55mm frame width. Both MMS versions have high breaking capacities, up to 100,000A in some ranges. A wide range of accessories is available, including shunt trips and undervoltage releases.



Auxiliary and alarm contact blocks



Shunt trips and undervoltage releases



MMS external handles



MMS Busbars

Accessories

Fuji Duo Series Manual Motor Starters

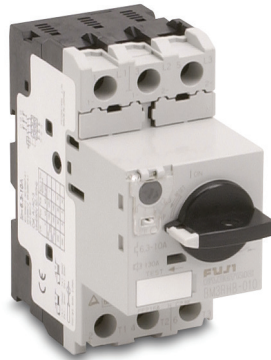
General Information

Features

- Adjustable thermal-magnetic trip
- Available in two frame sizes, 45mm width and 55mm width
- A wide motor capacity range up to 40 hp, 3-phase (440/480 VAC, 63A); 60 hp @ 600V
- Rotary handle operators
- On/Off and trip state indicators for all frames
- Max. breaking capacity of 100 kA (240 VAC)
- Common accessories to reduce inventory
- A wide rated operational current range of up to 32A for the 45mm wide and 63A for the 55mm wide starters
- ON/OFF and trip indicators for instant status recognition
- Accessories such as auxiliary contact blocks, shunt trip devices, and undervoltage trip devices are compatible with the 45mm and 55mm wide frame sizes
- External operating handles are available as optional accessories
- Lockout/tagout feature

Standards

- UL listed, file E163944, Standard UL 508
- cUL listed, file E163944, CSA C22.2 No.14
- TÜV, CE
- cULus listed for group installation per NEC 430-53(c)



BM3RHB-xxx Models (45mm wide)

Rated current: 0.16 to 32A

Rated insulation voltage: 690V

Operation handle: Rotary

Short circuit current rating:

- 100 kA at 240 VAC
- 50 kA at 480 VAC

NOTE: When using BM3RHB-xxx MMS in a UL Type E application, you must also use part numbers BZ0TKUAB (short-circuit contact block) and BZ0TCRE (line side terminal cover).



BM3VHB-xxx Models (55mm wide)

Rated current: 10 to 63A

Rated insulation voltage: 1000V

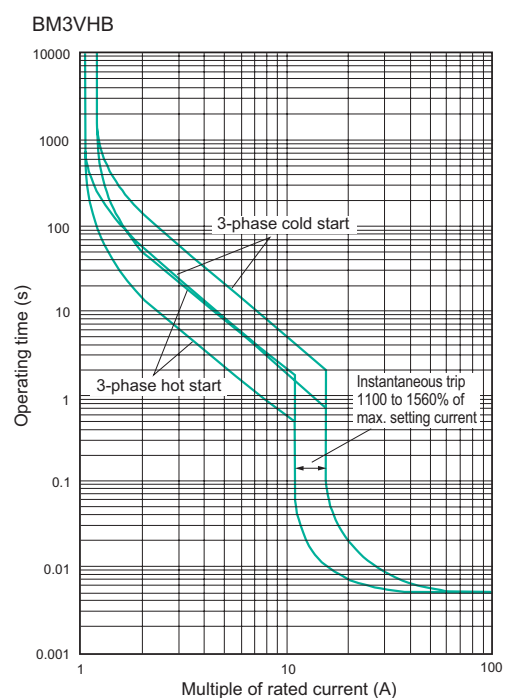
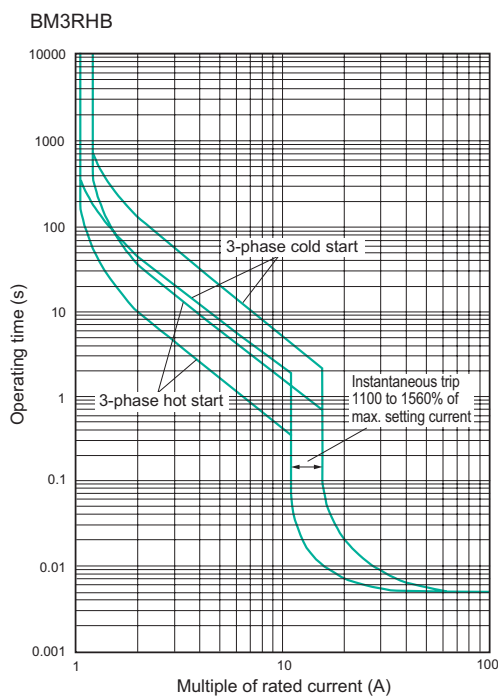
Operation handle: Rotary

Short circuit current rating:

- 100 kA at 240 VAC
- 50 kA at 480 VAC

NOTE: When using BM3VHB-xxx MMS in a UL Type E application, you must also use part number BZ0TKUAB (short-circuit contact block).

Characteristic curves



Fuji Duo Series Manual Motor Starters

BM3RHB-xxx Specifications



General Specifications: 45mm Frame Width - BM3RHB-xxx Series													
Part Number	Price	Adjustable Current Range	UL/CSA 3-Phase HP Rating ¹				Instantaneous Trip Current (A)	UL/CSA Short Circuit Current Rating (kA) ²			Max. Listed Branch Circuit Protection - Fuse or MCCB (A) ²		
		I _e : Min.-Max. (A)	200-208 VAC	220-240 VAC	440-480 VAC	550-600 VAC		240 VAC	480 VAC	600 VAC			
BM3RHB-P16		0.1-0.16	Rated to motor full-load amperage				In accordance with motor full-load current	2.1	100	50	10	500	
BM3RHB-P25		0.16-0.25						3.3	100	50	10	500	
BM3RHB-P40		0.25-0.4						5.2	100	50	10	500	
BM3RHB-P63		0.4-0.63						8.2	100	50	10	500	
BM3RHB-001		0.63-1						1/2	13	100	50	10	500
BM3RHB-1P6		1-1.6					3/4	3/4	20.8	100	50	10	500
BM3RHB-2P5		1.6-2.5	1/2	1/2	1	1-1/2	32.5	100	50	10	500		
BM3RHB-004		2.5-4	3/4	3/4	2	3	52	100	50	10	500		
BM3RHB-6P3		4-6.3	1	1-1/2	3	5	81.9	100	50	10	500		
BM3RHB-010		6.3-10	2	3	5	7-1/2	130	100	50	10	500		
BM3RHB-013		9-13	3	3	7-1/2	10	169	100	50	10	500		
BM3RHB-016		11-16	3	5	10	10	208	100	50	10	500		
BM3RHB-020		14-20	5	5	10	15	260	100	50	10	500		
BM3RHB-025		19-25	7-1/2	7-1/2	15	20	325	100	50	10	500		
BM3RHB-032		24-32	10	10	20	30	416	100	50	10	500		

Note 1: BM3RHB-xxx are cUL listed as HP rated motor controllers. Note 2: BM3RHB-xxx are cUL listed for group installation per NEC430-53(C).

General Specifications: 45mm Frame Width - BM3RHB-xxx Series - continued	
Features	Adjustable thermal-magnetic trip type
Number of Poles	3
Handle Type	Rotary
Rated Current I _e (A)	0.16 to 32
Rated Operational Voltage U _e (V)	200 to 690
Rated Frequency (Hz)	50/60
Rated insulation Voltage U _i (V)	690
Rated Impulse Withstand Voltage U _{imp} (kV)	6
Utilization Category	IEC 60947-2 Circuit Breaker IEC 60947-4-1 Motor Starter
Trip Class IEC 60947-4-1	Cat. A AC-3
Instantaneous Trip Characteristic	10
Power Loss (total of 3-pole)	13 x I _e max.
Mechanical Durability (operations)	7W: I _n =0.16 to 25A 8.5W: I _n =32A
Electrical Durability (operations)	100,000: I _n =0.16 to 25A 70,000: I _n =32A
Max. Operations per Hour (motor start-up)	100,000: I _n =0.16 to 25A 70,000: I _n =32A
Phase-loss Protection	25
Trip Indicator	Provided
Test Trip Function	Provided
Dimensions (mm) WxHxD	Provided
Weight (oz [g])	45x90x79
Optional Accessories	13.05 [370]
Auxiliary Contact Block	Yes
Alarm Contact Block	Yes
Auxiliary and Alarm Contact Block	Yes
Short-Circuit Alarm Contact Block	Yes
Shunt Trip Device	Yes
Undervoltage Trip Device	Yes
External Operating Handle	Yes
Standards & Agency Approvals	IEC 60947-1, 60947-2, 60947-4-1, UL 508 file E163944, CSA C22.2 No.14 file 20479

Fuji Duo Series Manual Motor Starters

BM3VHB-xxx Specifications

General Specifications: 55mm Frame Width - BM3VHB-xxx Series											
Part Number	Price	Adjustable Current Range I _e : Min.-Max. (A)	UL/CSA 3-Phase hp Rating ¹				Instantaneous Trip Current (A)	UL/CSA Short Circuit Current Rating (kA) ²			Max. Listed Branch Circuit Protection - Fuse or MCCB (A) ²
			200-208 VAC	220-240 VAC	440-480 VAC	550-600 VAC		240 VAC	480 VAC	600 VAC	
BM3VHB-010		6.3-10	2	3	5	7-1/2	130	100	50	10	600
BM3VHB-013		9-13	3	3	7-1/2	10	169	100	50	10	600
BM3VHB-016		11-16	3	5	10	10	208	100	50	10	600
BM3VHB-020		14-20	5	5	10	15	260	100	50	10	600
BM3VHB-025		19-25	7-1/2	7-1/2	15	20	325	100	50	10	600
BM3VHB-032		24-32	10	10	20	30	416	100	50	10	600
BM3VHB-040		28-40	10	10	30	30	520	100	50	10	600
BM3VHB-050		35-50	15	15	30	40	650	100	50	10	600
BM3VHB-063		45-63	20	20	40	60	819	100	50	10	600

Note 1: BM3VHB-xxx are cUL listed as HP rated motor controllers. Note 2: BM3VHB-xxx are cUL listed for group installation per NEC430-53(C).

General Specifications: 55mm Frame Width - BM3VHB-xxx Series - continued		
Features		Adjustable thermal-magnetic trip type
Number of Poles		3
Handle Type		Rotary
Rated Current I_e (A)		10 to 63
Rated Operational Voltage U_e (V)		200 to 690
Rated Frequency (Hz)		50/60
Rated Insulation Voltage U_i (V)		1,000
Rated Impulse Withstand Voltage U_{imp} (kV)		8
Utilization Category	IEC 60947-2 Circuit Breaker	Cat. A
	IEC 60947-4-1 Motor Starter	AC-3
Trip Class IEC 60947-4-1		10
Instantaneous Trip Characteristic		13 x I _e max.
Power Loss (total of 3-pole)		11W: I _n = 10 to 32A 15W: I _n = 40 to 50A 17W: I _n = 63A
Mechanical Durability (operations)		50,000
Electrical Durability (operations)		25,000
Max. Operations per Hour (motor start-up)		25
Phase-Loss Protection		Provided
Trip Indicator		Provided
Test Trip Function		Provided
Dimensions (mm) WxHxD		55x110x96
Weight (oz [g])		27.51 [780]
Optional Accessories	Auxiliary Contact Block	Yes
	Alarm Contact Block	Yes
	Auxiliary and Alarm Contact Block	Yes
	Short-Circuit Alarm Contact Block	Yes
	Shunt Trip Device	Yes
	Undervoltage Trip Device	Yes
	External Operating Handle	Yes
Standards & Agency Approvals		IEC 60947-1, 60947-2, 60947-4-1, UL 508 file E163944, CSA C22.2 No.14 file 20479

Fuji Duo Series Manual Motor Starters

DIN-rail mounting

The MMS can be mounted to a 35mm DIN rail. Secure the rail with screws at mounting pitch of less than 400mm for the BM3R type and less than 300mm for the BM3V type.

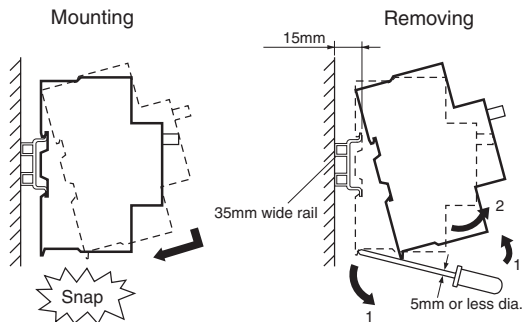
Applicable rail:

Use a 15mm-high DIN rail, such as our DN-R35HS1, which conforms to EN-50022 and IEC715.

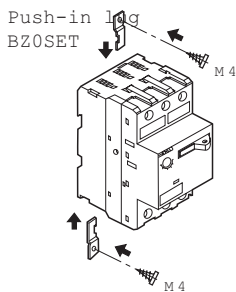
The standard DIN rail mounting direction is horizontal. When using the MMS on vertically mounted DIN rail, use end clamps.

Screw mounting

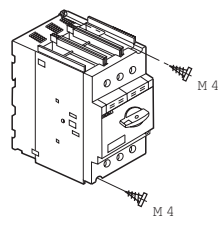
The separately sold push-in lug (BZ0SET) is required for screw mounting the BM3R frame. The BM3V frame can be screw mounted directly to the panel.



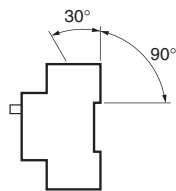
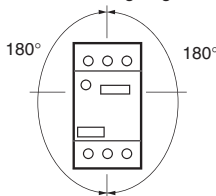
BM3RHB -xxx



BM3VHB-xxx



Mounting angle



Wiring

While pressing the wire with a screwdriver, tighten the screw to the specified tightening torque.

Environmental Specifications

Ambient Temperature	Operating: -5 to +55 °C Storage: -40 to +65 °C	No sudden temperature changes resulting in condensation or icing.
Humidity	45 to 85%RH	
Altitude	2000m or lower	
Atmosphere	No excessive dust, smoke, corrosive gases, flammable gases, steam or salt.	
Vibration	10 to 55 Hz 15 m/s ²	No abnormal shock or vibration.
Shock	50 m/s ²	

Wiring Specifications

Wire Size and Tightening Torque

Type	BM3RHB-xxx	BM3VHB-xxx	BZ0 Accessories
Solid Wire (mm)	1.6 to 2.6 dia.	1.6 to 2.6 dia.	1 to 1.6 dia.
Stranded Wire (mm²)	Single-wire	1 to 10	0.5 to 2.5
	2-wire	1 to 6	0.5 to 2.5
AWG	Single-wire	18 to 8	18 to 14
	2-wire	18 to 10	18 to 14
Sheath Stripping Length (mm)	Approx.10	Approx.13	Approx.10
Terminal Screw	Pan head screw (PZ2) M4	Pan head screw (PZ2) M6	Pan head screw (PZ2) M3.5
Tightening Torque (N·m)	2	4	0.8

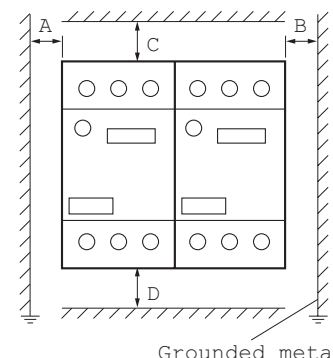
Note: There is no need for a crimp terminal or any other terminal on the end of the connection wire.

Arc Space Requirements

Arc Space Requirements

Part Number	Rated operational voltage U_e	Minimum distance to grounded metal (mm)	
	(V)	A,B	C,D
BM3RHB-xxx	Up to 500	15	30
	Up to 690	40	50
BM3VHB-xxx	Up to 500	15	40
	Up to 690	40	50

When frames are mounted side-by-side, operating conditions such as a high ambient temperature or using the maximum setting for continuous carrying current may cause slight changes in operating characteristics due to temperature rises. Under such conditions, it is recommended that the frames be separated by at least 5mm.



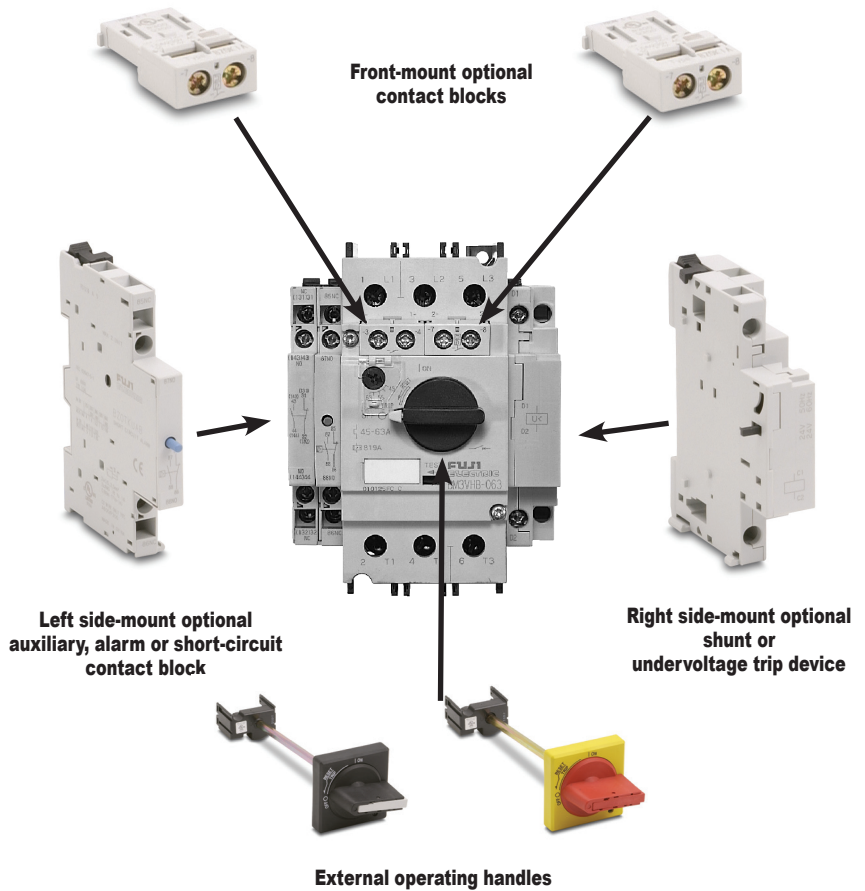
Fuji Duo Series Manual Motor Starters Accessories

Optional accessories

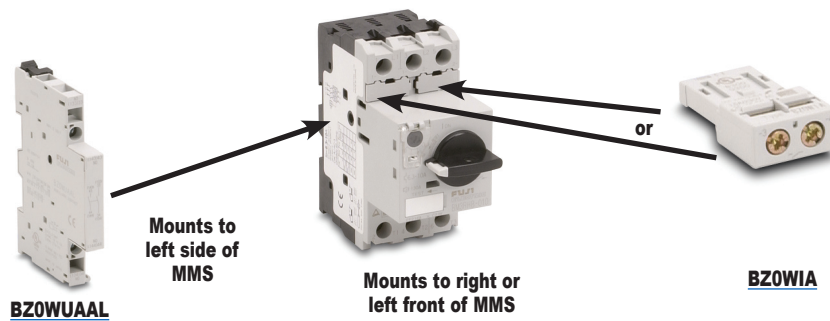
- All accessories can be used with BM3R (45mm wide) and BM3V (55mm wide) frames
- Accessories are easily mounted
- Internally-mountable auxiliary contact blocks and alarm contact blocks can be front mounted
- Side-mountable auxiliary contact blocks can be mounted on the left side
- Shunt trip and undervoltage trip devices are available in a wide operating coil voltage range and mount on the right side
- Standard and emergency external handles are available
- IP20 terminal cover helps prevent accidental contact with electrically charged parts
- Optional front mounted contact and alarm blocks eliminate horizontal space needed with the DIN rail



Installation of optional contact blocks and trip devices



Auxiliary contact blocks



Auxiliary Contact Blocks						
Part Number	Price	Description	Starter Type	Mounting	Contact Arrangement	Weight (g [lb])
<u>BZ0WIA</u>		These contact blocks do not discriminate between OFF, overload, phase-loss, or short circuit. The blocks are linked to the ON/OFF operation of the MMS, and also operate in the event of an overload, phase-loss, or short circuit. Up to two contact blocks can be mounted to the right/left front, and up to two contact blocks can be mounted to the left sides.	BM3RHB-xxx BM3VHB-xxx	Front	1 N.O.	9 [0.02]
<u>BZ0WIB</u>					1 N.C.	
<u>BZ0WUAAAL</u>				Left side	2 N.O.	45 [0.1]
<u>BZ0WUABL</u>					1 N.O. + 1 N.C.	
<u>BZ0WUBBL</u>					2 N.C.	

Fuji Duo Series Manual Motor Starters Accessories



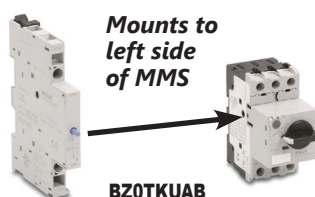
Accessories (continued)

Alarm contact blocks



Alarm Contact Blocks						
Part Number	Price	Description	Starter Type	Mounting	Contact Arrangement	Weight (g [lb])
BZ0KIA		This block operates when the MMS trips due to overload, phase-loss, or short-circuit. It is not linked to the ON/OFF operation of the MMS. Note: Operation can be checked with the test trip function.	BM3RHB-xxx BM3VHB-xxx	Front (Right side only)	1 N.O.	9 [0.02]
BZ0KIB	1 N.C.					

Short-circuit alarm contact blocks



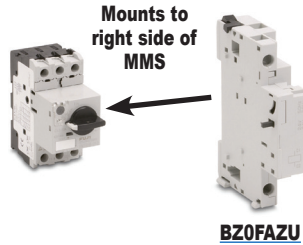
Note 1: Required when using MMS in a UL Type E application.
Note 2: Do not configure this with an auxiliary contact block; the contact will only close when a short circuit occurs.

Short-Circuit Alarm Contact Block						
Part Number	Price	Description	Starter Type	Mounting	Contact Arrangement	Weight (g [lb])
BZ0TKUAB		<ul style="list-style-type: none"> The contacts operate only when the MMS has tripped due to a short-circuit (cannot be checked with trip test function). When these contacts operate, the blue reset button extends out, and a trip indication is displayed. The power to the MMS can be turned ON after pressing the reset button. Note: Be sure to press the reset button before mounting to the MMS. 	BM3RHB-xxx BM3VHB-xxx	Left	1 N.O. + 1 N.C.	45 [0.1]

Contact Status					
Contact Type		Device Condition			
		OFF	ON	Tripped	
				Overload or Phase-loss	Short Circuit
AUX CONTACT BZ0WIA , BZ0WIB , BZ0WUAAL , BZ0WUBBL , BZ0WUABL	N.O.	Open	Closed	Opens	
	N.C.	Closed	Open	Closes	
ALARM CONTACT BZ0KIA , BZ0KIB	N.O.	Open (no change)	Open (no change)	Closes	
	N.C.	Closed (no change)	Closed (no change)	Opens	
SHORT-CIRCUIT CONTACT BZ0TKUAB	N.O.	Open (no change)	Open (no change)	Open (no change)	Closes
	N.C.	Closed (no change)	Closed (no change)	Closed (no change)	Opens

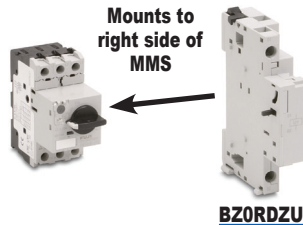
Fuji Duo Series Manual Motor Starters Accessories

Accessories (continued)



Shunt trip devices

Shunt Trip Devices						
Part Number	Price	Description	Starter Type	Mounting	Contact Arrangement	Weight (g [lb])
<u>BZ0FAZU</u> <u>BZ0FDZU</u>		This device is used to remotely trip the MMS. Notes: • This device cannot be used together with an undervoltage trip device. • When the MMS has been tripped with the shunt trip device, press the reset button before turning ON the power.	BM3RHB-xxx BM3VHB-xxx	Right	110-127V 50 Hz/120V 60 Hz	115 [0.25]
<u>BZ0FKZUD</u>					24-60VDC (time rating of coil is 5s)	



Undervoltage trip devices

Undervoltage Trip Devices						
Part Number	Price	Description	Starter Type	Mounting	Contact Arrangement	Weight (g [lb])
<u>BZ0RDZU</u>		This device automatically trips the MMS when the control circuit voltage drops below the specified value. Notes: This device cannot be used together with a shunt trip device. When the MMS has been tripped with the undervoltage trip device, press the reset button before turning ON the power.	BM3RHB-xxx BM3VHB-xxx	Right	110-127V 50 Hz/120V 60 Hz	115 [0.25]
<u>BZ0R4ZU</u>					415-440V 50 Hz/460-480V 60 Hz	



Push-in lug

Push-in Lug				
Part Number	Price	Description	Starter type	Weight (g [lb])
<u>BZ0SET</u>		Push-in mounting lug. Required for screw mounting of MMS; qty: 10/pkg	BM3RHB-xxx	2.0 [0.004]

Note: See page MRC-tMRC-73 for installation instructions



Terminal Cover

Terminal Cover			
Part Number	Price	Description	Starter Type
<u>BZ0TCRE</u>		Line side terminal cover.	BM3RHB-xxx

Notes: BZ0TCRE required only when using BM3RHB-xxx MMS in a UL Type E application (along with short circuit alarm contact block [BZ0TKUAB](#)).
 If using BZ0TCRE terminal cover with BM3R series MMS, the busbar system and front mounted contacts cannot be used.

Fuji Duo Series Manual Motor Starters Accessories

Accessories (continued)

External operating handles



BZ0VBBL

External Operating Handles					
Part Number	Price	Description	Starter Type	Handle Type	Weight (g [lb])
<u>BZ0VBBL</u>		<ul style="list-style-type: none"> Used to operate an MMS installed inside a panel, from the outside of the panel. Equipped with an interlock mechanism that prevents someone from mistakenly opening the panel door when the MMS is in the ON state. The shaft can be cut to match the distance between the MMS and the panel door. Door interlock function OFF lock function Can be locked OFF with up to three padlocks. Note: Padlocks are to be provided by the customer. Release screw allows the door to be opened with the handle in the ON position. IP54 enclosure 	BM3RHB-xxx	Standard (black)	160 [0.35]
<u>BZ0VBBM</u>			BM3VHB-xxx	Standard (black)	160 [0.35]
<u>BZ0VYRM</u>			Emergency (red/yellow)	160 [0.35]	

NOTE: Premade MMS enclosures are currently not available.

Accessory Specifications

Trip Device Specifications			
Accessory Type and Part Number		Shunt trip device	Undervoltage device
		BZ0Fxxx	BZ0Rxxx
Standard		IEC 60947-1, UL 508	
Rated Insulation Voltage (VAC)	IEC 60947	690	
	UL 508	600	
No. of ON-OFF Operations		5000	
Operating Time (ms)		20	
Power Consumption	Inrush (VA/W)	21/12	
	Sealed (VA/W)	8/1.2	
Voltage Range	Tripping Voltage (V)	0.7 to 1.1 Ue	0.35 to 0.7 Ue
	Closing Voltage (V)	-	0.85 to 1.1 Ue
Time Rating of Coil (s)	AC: Continuous		AC: Continuous
	DC: 5		

Fuji Duo Series Manual Motor Starters Accessories

Accessory specifications (continued)

Contact Block Specifications					
Accessory Type and Part Number		Auxiliary contact block/front	Auxiliary contact block/side	Alarm contact block	Short-circuit alarm contact block
		<u>BZOWIA, BZOWIB</u> (note 3)	<u>BZOWUAA</u> <u>BZOWUABL</u> <u>BZOWUBBL</u>	<u>BZOKIA, BZOKIB</u> (note 3)	<u>BZOTKUAB</u>
Standard		IEC 60947-5-1, UL 508			
Rated Operational Current (A)	48 VAC AC-15 (note 2)	5	6	5	6
	125 VAC	3	4	3	4
	230 VAC	1.5	4	1.5	4
	400 VAC	(note 3)	2.2	(note 3)	2.2
	500 VAC		1.5		1.5
	690 VAC		0.6		0.6
	48 VDC DC-13 (note 2)	1.38	5	1.38	5
	110 VDC	0.55	1.3	0.55	1.3
220 VDC	0.27	0.5	0.27	0.5	
Contact Rating Code UL 508 (note 1)	AC	B300	A600	B300	A600
	DC	Q300	P300	Q300	P300
Min. Voltage and Current		17V / 5 mA			

Note 1: NEMA ICS 5-2000. For more information, refer to Control Circuit Contact Electrical Ratings, page MRC-tMRC-130.

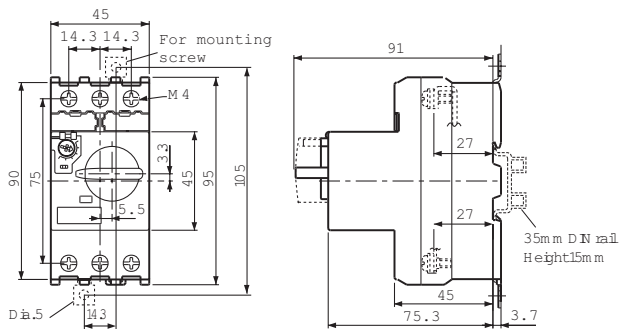
Note 2: IEC utilization category. For more information, refer to page MRC-tMRC-131.

Note 3: The indicated contacts should not be used in control circuits higher than 300V.

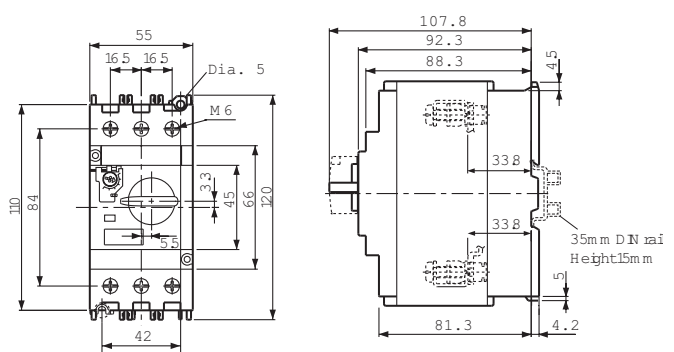
Dimensions [mm]

Manual motor starters

Rotary handle types BM3RHB-xxx



Rotary handle type BM3VHB-xxx



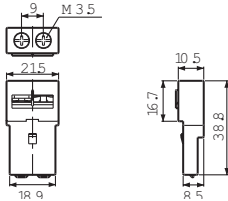
Fuji Duo Series Manual Motor Starters Accessories

Dimensions (continued) [mm]

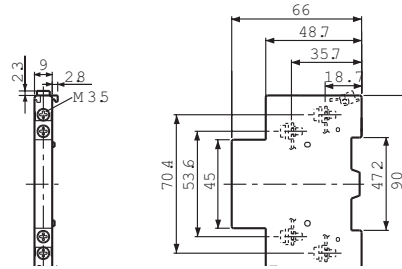


Accessories

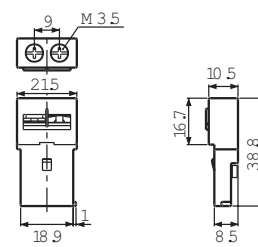
Auxiliary contact blocks, front mount.
BZ0WIA, BZ0WIB



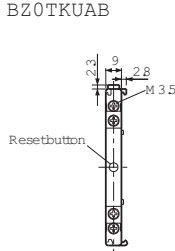
Auxiliary contact blocks, side mount.
BZ0WUAA, BZ0WUAB, BZ0WUBB



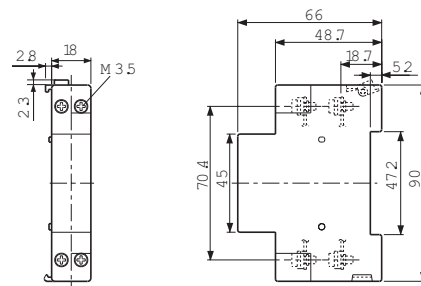
Alarm contact blocks, front mount.
BZ0KIA, BZ0KIB



Short-circuit alarm contact block
BZ0TKUAB

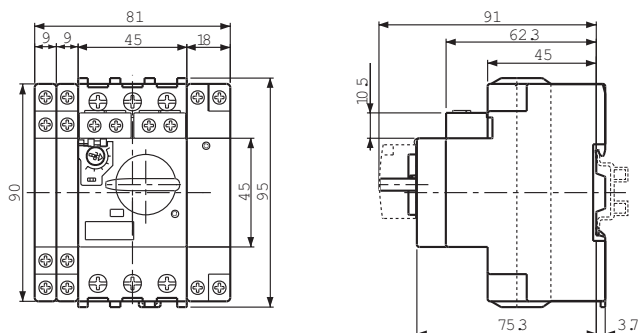


Shunt trip devices BZ0Fxxxx
Undervoltage trip devices BZ0Vxxxx

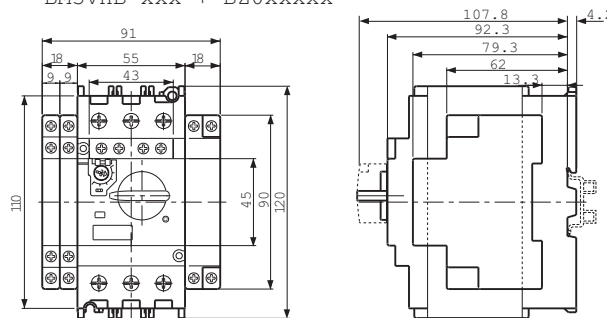


MMS with accessories

BM3RHB-xxx + BZ0xxxxxx



BM3VHB-xxx + BZ0xxxxxx



Fuji Duo Series Manual Motor Starters Accessories

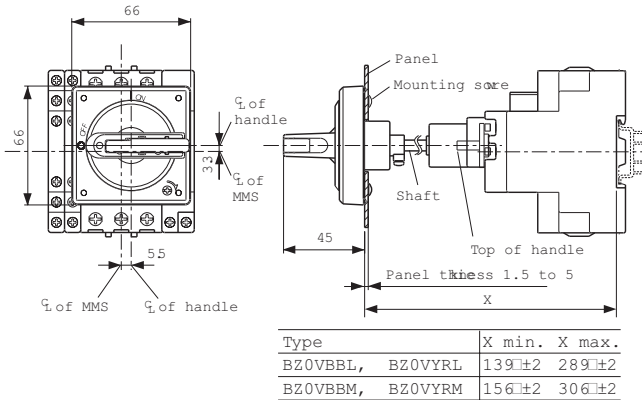


Dimensions (continued)

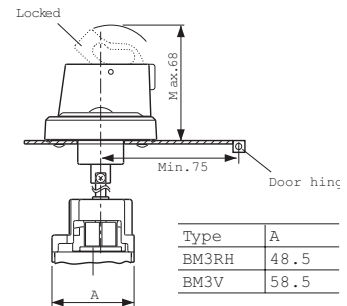
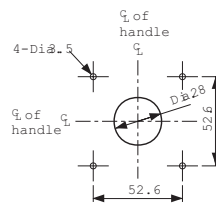
[mm]

Accessories

External operation handle BZ0Vxxx

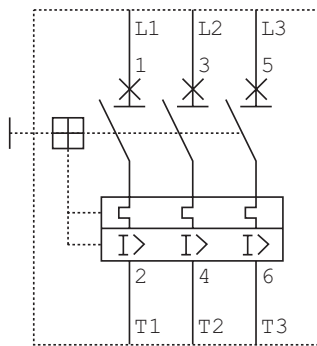


Panel drilling



Wiring Diagrams

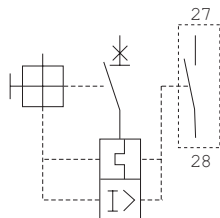
MMS



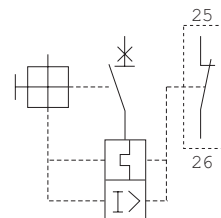
Alarm contact blocks

Front mounting

BZ0KIA



BZ0KIB



For control circuit design, see design standards such as NEC 430 "Electrical Arrangement of control Circuits" or UL 508A Section 38 "Wiring methods, wire routing, and separation of circuits for internal wiring of a control circuit."

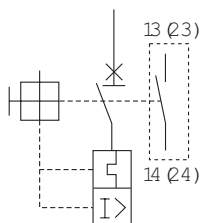
Fuji Duo Series Manual Motor Starters Accessories

Wiring Diagrams (continued)

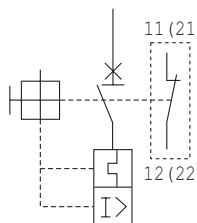
Auxiliary contact blocks

Front mounting

BZ0W A

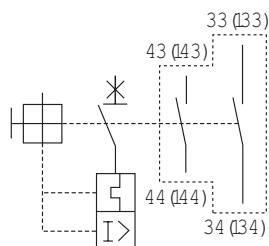


BZ0W B

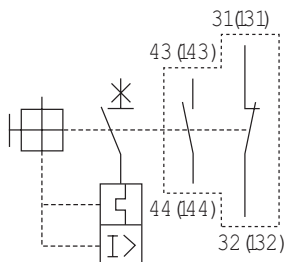


Side mounting

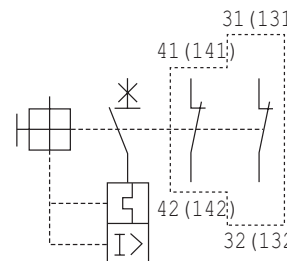
BZ0WU AAL



BZ0WU ABL

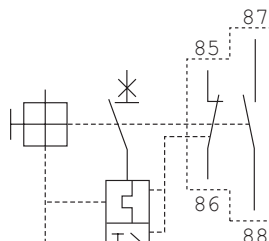


BZ0WU BBL



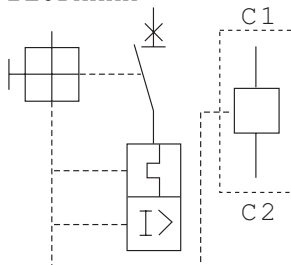
Short-circuit & contact blocks

BZ0TKUAB



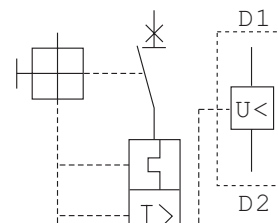
Shunt trip device

BZ0Fxxxx



Undervoltage trip

BZ0Rxxxx



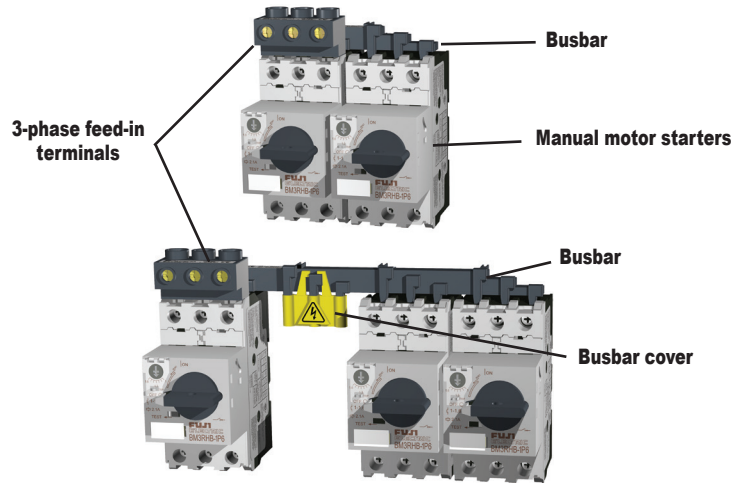
For control circuit design, see design standards such as NEC 430 "Electrical Arrangement of control Circuits" or UL 508A section 38 "Wiring methods, wire routing, and separation of circuits for internal wiring of a control circuit."

Fuji Duo Series Manual Motor Starters Accessories

Busbar system

Features

- The busbar system reduces wiring time and saves floor space.
- The busbar makes it easy to power from 2 to 5 manual motor starters, with no wiring needed.
- The 3-phase feed-in terminals are used to connect the wire for the power supply circuit.
- The busbar cover guards against accidental touching of non-connected busbar terminals (charged parts).
- If using BZ0TCRE terminal cover with BM3R series MMS, the busbar system can not be used.



Note: Busbar photos continued on next page.



BZ0BFRA



BZ0BFVA



BZ0BCRA



BZ0BCVA

Busbar System Components and Ratings							
Part Number	Price	Description	Used with	Specifications		Weight (g)	
BZ0BR02A		Busbar	BM3R	Continuous current: 64A max. pin connection	2-BM3R, modular space: 45mm	30	
BZ0BR03A					3-BM3R, modular space: 45mm	50	
BZ0BR04A					4-BM3R, modular space: 45mm	70	
BZ0BR05A					5-BM3R, modular space: 45mm	90	
BZ0BR12A					2-BM3R, modular space: 54mm	30	
BZ0BR13A			BM3R+ 1 external accessory, 9mm wide		3-BM3R, modular space: 54mm	55	
BZ0BR14A					4-BM3R, modular space: 54mm	80	
BZ0BR15A					5-BM3R, modular space: 54mm	105	
BZ0BV02A					BM3V	2-BM3V, modular space: 55mm	140
BZ0BV03A						3-BM3V, modular space: 55mm	240
BZ0BV04A			4-BM3V, modular space: 55mm			340	
BZ0BV12A			BM3V + 1 external accessory, 9mm wide			2-BM3V, modular space: 64mm	150
BZ0BV13A						3-BM3V, modular space: 64mm	270
BZ0BV14A					4-BM3V, modular space: 64mm	380	
BZ0BFRA					3-phase feed-in terminal	BM3R	Continuous current: 64A max. Applicable cable size: 25 mm ² max.
BZ0BFVA		BM3V	Continuous current: 126A max. Applicable cable size: 50 mm ² max.	170			
BZ0BCRA		Busbar cover	BZ0BR	For pin connection	10		
BZ0BCVA			BZ0BV	NOTE: Some fine tuning and fitting adjustments may be needed.	5		

Fuji Duo Series Combination Starter Selection Table - 45mm

Use this selection table to select 45mm frame width (A) Manual Motor Starter, (B) Contactor, (C) Link Module, and (D) Base Plate for a Combination Starter

Combination Starter Selection Table - 45mm										
Three Phase Motor				Manual Motor Starter Adjustable Current Range (A)	A Manual Motor Starter See Note 2 below for UL Type E applications.	B Contactor The contactor part number needs the coil voltage suffix. See Note 3 below.	C Link Module	D Base Plate	SCCR at 480Y/277 VAC (kA) type F coordination	
220-240V		440-480V								
Motor Horsepower (hp) See Note 1 below	Motor Full-Load Amperage (FLA) See Note 4 below	Motor Horsepower (hp) See Note 1 below	Motor Full-Load Amperage (FLA) See Note 4 below							
-	-	-	-	0.1 to 0.16	BM3RHB-P16	SC-E02-110VAC SC-E02G-24VDC	BZ0LRE22AA BZ0LRE22GA	BZ0BPRE22A	65	
-	-	-	-	0.16 to 0.25	BM3RHB-P25	SC-E02-110VAC SC-E02G-24VDC	BZ0LRE22AA BZ0LRE22GA		65	
-	-	-	-	0.25 to 0.4	BM3RHB-P40	SC-E02-110VAC SC-E02G-24VDC	BZ0LRE22AA BZ0LRE22GA		65	
-	-	-	-	0.4 to 0.63	BM3RHB-P63	SC-E02-110VAC SC-E02G-24VDC	BZ0LRE22AA BZ0LRE22GA		65	
-	-	-	-	0.63 to 1.0	BM3RHB-001	SC-E02-110VAC SC-E02G-24VDC	BZ0LRE22AA BZ0LRE22GA		65	
-	-	0.75	1.6	1.0 to 1.6	BM3RHB-1P6	SC-E02-110VAC SC-E02G-24VDC	BZ0LRE22AA BZ0LRE22GA		65	
0.5	2.2	1	2.1	1.6 to 2.5	BM3RHB-2P5	SC-E02-110VAC SC-E02G-24VDC	BZ0LRE22AA BZ0LRE22GA		65	
0.75	3.2	2	3.4	2.5 to 4.0	BM3RHB-004	SC-E02-110VAC SC-E02G-24VDC	BZ0LRE22AA BZ0LRE22GA		65	
1.5	6	3	4.8	4.0 to 6.3	BM3RHB-6P3	SC-E02-110VAC SC-E02G-24VDC	BZ0LRE22AA BZ0LRE22GA		65	
-	-	5	7.6	6.3 to 10	BM3RHB-010	SC-E02-110VAC SC-E02G-24VDC	BZ0LRE22AA BZ0LRE22GA		65	
3	9.6	7.5	11	9 to 13	BM3RHB-013	SC-E03-110VAC SC-E03G-24VDC	BZ0LRE22AA BZ0LRE22GA		65	
5	15.2	10	14	11 to 16	BM3RHB-016	SC-E04-110VAC SC-E04G-24VDC	BZ0LRE22AA BZ0LRE22GA		65	
5	15.2	10	14	14 to 20	BM3RHB-020	SC-E04-110VAC SC-E04G-24VDC	BZ0LRE22AA BZ0LRE22GA		65	
7.5	22	15	21	19 to 25	BM3RHB-025	SC-E05-110VAC SC-E05G-24VDC	BZ0LRE22AA BZ0LRE22GA		50	
10	28	20	27	24 to 32	BM3RHB-032	SC-E1-110VAC SC-E1G-24VDC	BZ0LRE32AA BZ0LRE32GA		BZ0BPRE32A	50

Note 1: When a horsepower rating is listed on two rows, the motor full-load amperage must be known so you can select the MMS with the best adjustable current range for your application. For example, if you have a 230V, 5 hp, 15.2A motor, you can select a MMS with either a 11-16A range or a 14-20A range. Consult the motor data plate or motor manufacturer.

Note 2: When using BM3RHB-xxx MMS in a UL Type E application, you must also use part numbers [BZ0TKUAB](#) (short-circuit contact block) and [BZ0TCRE](#) (line side terminal cover).

Note 3: For AC coil voltages other than 110 VAC, substitute the "110VAC" in the part number with "220VAC" for 220/240 VAC coils or "24VAC" for 24 VAC coils. For example, if the table lists a SC-E02-110VAC contactor for your application and you need a contactor with a 220 VAC coil, use contactor SC-E02-220VAC.

Note 4: Per NEC 2005 Table 430.250

Note 5: The table above also include the Fuji part numbers with (P). Example: SC-E02-110VAC = SC-E02P-110VAC.

Fuji Duo Series Combination Starter Selection Table - 55mm



Use this selection table to select 55mm frame width (A) Manual Motor Starter, (B) Contactor, (C) Link Module, and (D) Base Plate for a Combination Starter

Combination Starter Selection Table - 55mm									
Three Phase Motor				Manual Motor Starter Adjustable Current Range (A)	A	B	C	D	SCCR at 480Y/277 VAC (kA) type F coordination
220-240V		440-480V			Manual Motor Starter	Contactor	Link Module	Base Plate	
Motor horsepower (hp) See Note 1 below	Motor Full-Load Amperage (FLA) See Note 4 below	Motor Horsepower (hp) See Note 1 below	Motor Full-Load Amperage (FLA) See Note 4 below		See Note 2 below for UL Type E applications.	The contactor part number needs the coil voltage suffix. See Note 3 below.			
3	9.6	5	7.6	6.3 to 10	BM3VHB-010	SC-E1-110VAC	BZ0LVE51AA	BZ0BPVE51A	65
						SC-E1G-24VDC	BZ0LVE51GA		
3	9.6	7.5	11	9 to 13	BM3VHB-013	SC-E1-110VAC	BZ0LVE51AA		65
						SC-E1G-24VDC	BZ0LVE51GA		
5	15.2	10	14	11 to 16	BM3VHB-016	SC-E1-110VAC	BZ0LVE51AA		65
						SC-E1G-24VDC	BZ0LVE51GA		
5	15.2	10	14	14 to 20	BM3VHB-020	SC-E1-110VAC	BZ0LVE51AA		65
						SC-E1G-24VDC	BZ0LVE51GA		
7.5	22	15	21	19 to 25	BM3VHB-025	SC-E1-110VAC	BZ0LVE51AA		65
						SC-E1G-24VDC	BZ0LVE51GA		
10	28	20	27	24 to 32	BM3VHB-032	SC-E1-110VAC	BZ0LVE51AA		65
						SC-E1G-24VDC	BZ0LVE51GA		
10	28	30	40	28 to 40	BM3VHB-040	SC-E2-110VAC	BZ0LVE51AA		65
						SC-E2G-24VDC	BZ0LVE51GA		
15	42	30	40	35 to 50	BM3VHB-050	SC-E2S-110VAC	BZ0LVE51AA		65
						SC-E2SG-24VDC	BZ0LVE51GA		
20	54	40	52	45 to 63	BM3VHB-063	SC-E3-110VAC	BZ0LVE65AA	BZ0BPVE65A	65
						SC-E3G-24VDC	BZ0LVE65GA		

Note 1: When a horsepower rating is listed on two rows, the motor full-load amperage must be known so you can select the MMS with the best adjustable current range for your application. For example, if you have a 230V, 10 hp, 28A motor, you can select a MMS with either a 24-32A range or a 28-40A range. Consult the motor data plate or motor manufacturer.

Note 2: When using BM3VHB-xxx MMS in a UL Type E application, you must also use part number [BZ0TKUAB](#) (short-circuit contact block).

Note 3: For AC coil voltages other than 110 VAC, substitute the "110VAC" in the part number with "220VAC" for 220/240 VAC coils or "24VAC" for 24 VAC coils. For example, if the table lists a SC-E1-110VAC contactor for your application and you need a contactor with a 220 VAC coil, use contactor SC-E1-220VAC.

Note 4: Per NEC 2005 Table 430.250