

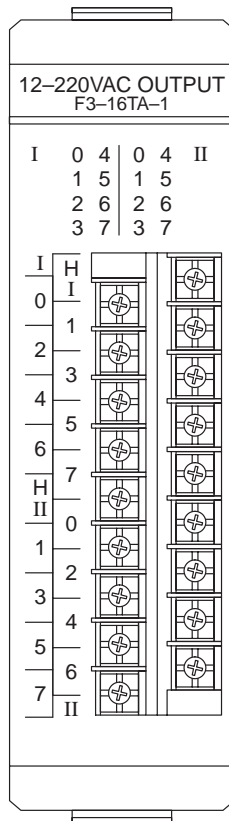
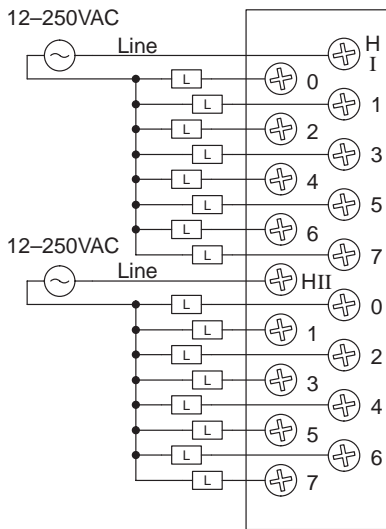
F3-16TA-1, 12-220 VAC Output Module

Outputs per module	16	Minimum load	0.5 mA
Commons per module	2 (isolated)	Base power required	9V 10mA / ON pt. 160mA Max. 24V N/A
Operating voltage	12-125 VAC 125-250 VAC requires external fuses	OFF to ON response	8 ms Max
Output type	SSR Array (TRIAC)	ON to OFF response	8 ms Max
Peak voltage	540 VAC	Terminal type	Removable
AC frequency	20 - 500 Hz	Status indicators	Logic Side
ON voltage drop	1 VAC @ 1A	Weight	6.2 oz. (176 g)
Max current	1A / point	Fuses	(4) fast blow One 5A (125V fast blow) per each group of four outputs User replaceable
Max leakage current	10 μ A @ 240 VAC		
Max inrush current*	20A for 16 ms 3A for 100 ms		

Discrete Output Modules

*Fuse blows at 20 Amp surge

Motor starters up to and including a NEMA size 3 can be used with this module.



Derating Chart for F3-16TA-1

