

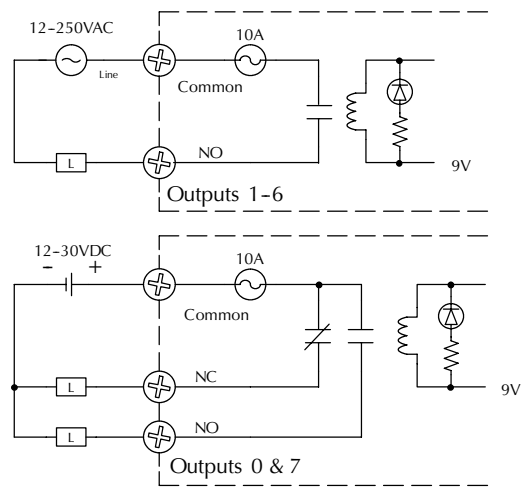
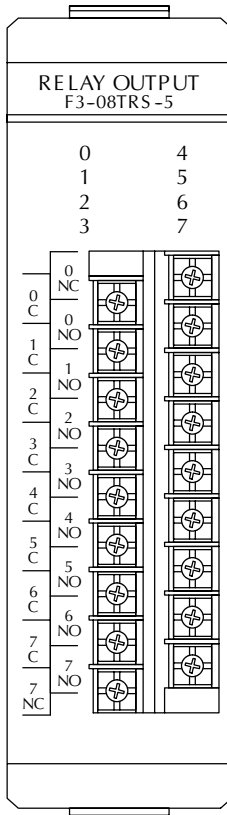
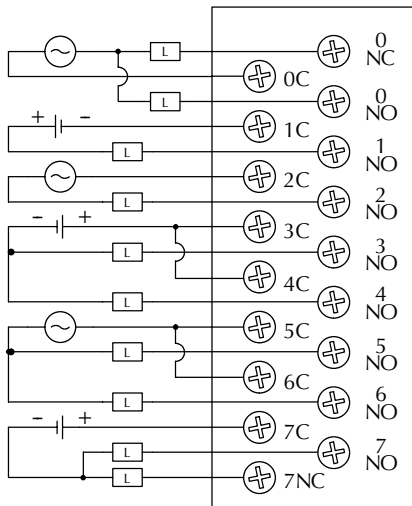
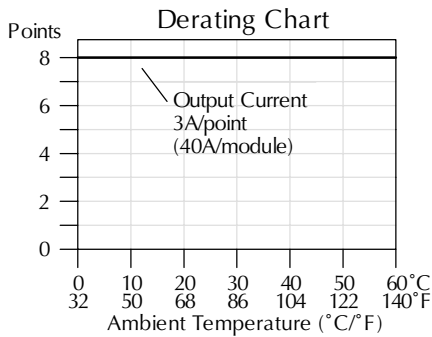
# RELAY OUTPUT MODULES

F3-08TRS-5 Relay Output (Class 1, Div 2)	
<b>Outputs per Module</b>	8
<b>Commons per Module</b>	8 (isolated)
<b>Operating Voltage*</b>	12-250VAC 12-30VDC
<b>Output Type</b>	6 Form A (SPST), 2 Form C (SPDT)
<b>Peak Voltage</b>	265VAC/120VDC
<b>AC Frequency</b>	47-63Hz
<b>ON Voltage Drop</b>	N/A
<b>Max Current (Resistive)</b>	3A/point AC/DC, 24A/module AC/DC
<b>Max Leakage Current</b>	N/A

<b>Max Inrush Current</b>	10A inductive
<b>Minimum Load</b>	100mA @ 12VDC
<b>Base Power Required</b>	9V 37mA/ON pt. (296 mA Max), 24V N/A
<b>OFF to ON Response</b>	13ms max
<b>ON to OFF Response</b>	9ms max
<b>Terminal Type</b>	Removable
<b>Status Indicators</b>	Logic side
<b>Weight</b>	9oz. (255 g)
<b>Fuses</b>	8 fuses (10A, 125V), replaceable Order D3-FUSE-6 (5 per pack) or use 19379-K-10A Wickman

Typical Relay Life			
Max. Resistive or Inductive Inrush Load Current	Operating Voltage		
	28VDC	120VAC	240VAC
5.0A	200K	100K	
3.0A	325K	125K	50K
0.5A	>50M		

www.automationdirect.com/dl305



\*Maximum DC voltage rating is 120 VDC at .5 Amp, 30,000 cycles typical

Motor starters up to and including a NEMA size 3 can be used with this module.