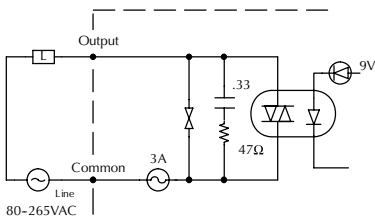
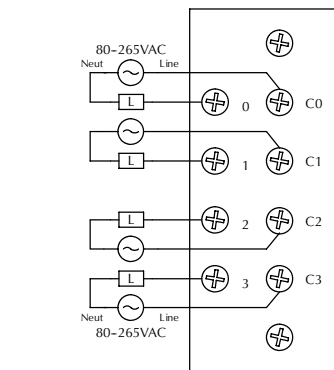
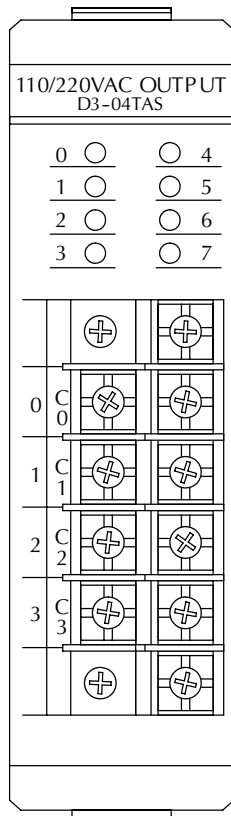
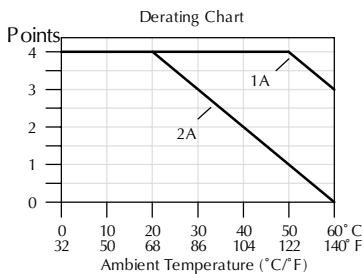


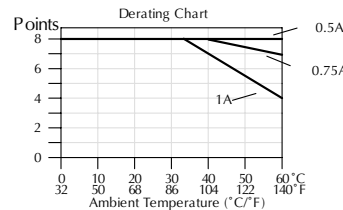
AC Output Modules

D3-04TAS AC Output <--->	
Outputs per Module	4
Commons per Module	4 (isolated)
Operating Voltage	80-265VAC
Output Type	Triac
Peak Voltage	265VAC
AC Frequency	47-63Hz
ON Voltage Drop	1.5VAC @ 2A
Max. Current	2A/point 2A/common
Max Leakage Current	7mA @ 220VAC 3.5mA @ 110VAC
Max Inrush Current	20A for 16ms 10A for 100ms
Minimum Load	10mA
Base Power Required	9V 12mA max 24V N/A
OFF to ON Response	1ms max
ON to OFF Response	10ms max
Terminal Type	Non-removable
Status Indicators	Logic side
Weight	6.4oz. (180g)
Fuses	4 (1 per common) 3A Order D3-FUSE-2 (5 per pack) <--->

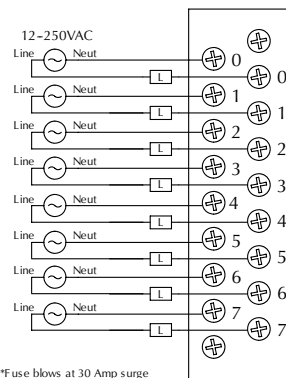
F3-08TAS AC Output <--->	
Outputs per Module	8 (500V point to point isolation)
Commons per Module	8 (isolated)
Operating Voltage	12-125VAC 125-250VAC (requires external fuses)
Output Type	SSR array (Triac)
Peak Voltage	400VAC
AC Frequency	47-440Hz
ON Voltage Drop	1VAC @ 1A
Maximum Current	1A/point
Maximum Leakage Current	10µ @ 240VAC
Max Inrush Current*	20A for 16ms 3A for 100ms
Minimum Load	0.5mA
Base Power Required	9V, 10mA/ON pt. (80mA max) 24V N/A
OFF to ON Response	8ms max
ON to OFF Response	8ms max
Terminal Type	Removable
Status Indicators	Logic side
Weight	6.3oz. (179g)
Fuses	8 (1 per common) 5A, 125V fast blow Order D3-FUSE-4 (5 per pack) <--->



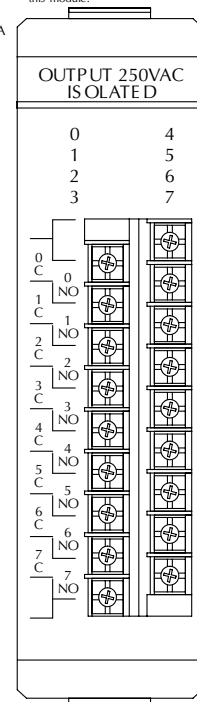
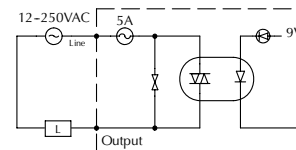
See the Terminal Blocks & Wiring section in this catalog for part numbers of ZIPLinks cables and terminal blocks compatible with this module.



Motor starters up to and including a NE MA size 3 can be used with this module.



*Fuse blows at 30 Amp surge



- PLC Overview
- DL05/06 PLC
- DL105 PLC
- DL205 PLC
- DL305 PLC**
- DL405 PLC
- Field I/O
- Software
- C-more HMIs
- Other HMI
- AC Drives
- Motors
- Steppers/Servos
- Motor Controls
- Proximity Sensors
- Photo Sensors
- Limit Switches
- Encoders
- Pushbuttons/Lights
- Process
- Relays/Timers
- Comm.
- TB's & Wiring
- Power
- Enclosures
- Appendix
- Part Index