

Filter Fan Kits



Features

- All models are 115V with an expected service life of 30,000 hours
- High-performance fan motors and finger guards
- Polycarbonate fire retardant plastic grilles, UL94-VO
- Durable, reusable filter mat included
- Patented “Click and Fit” system allows for rapid filter fan and exhaust filter installation without screws (This time-saving feature cuts installation time by up to 30 minutes when compared to traditional box fan packages)
- Cutout template provided with every unit
- Filter fan or exhaust filter simply snaps into cutout opening
- Connector type: WPF10 Series 2 has 12-inch wires. WPF20-WPF60 Series has terminal strip.

Standards

- cUL Recognized/CSA fan motor
- NEMA 1 (NEMA 12 with optional WPFG series gasket)
- IP43 (IP54 with optional WPFG Series gasket)

Accessories

- Gaskets (WPFG Series) recommended if installing on enclosure with textured finish
- Replacement Filters (WPFM Series)



Applications

- Most innovative technology for fan cooling and pressurizing of industrial enclosures.
- Provides a high quality, economical method of cooling enclosures
- Filtered passive ventilation can be provided by an exhaust filter for either convection cooling or in combination with a fan in forced air cooling
- Slim line design allows grille to protrude from enclosure surface less than one quarter inch
- Maintains aesthetics of enclosure

Part Number	Price	Amps at 50/60 Hz	Rated Voltage	Power Consumption at 50/60 Hz	Free Flow Air Delivery (CFM) ¹	Air Delivery with Exhaust (CFM) ¹	Max. Static Press. (PA)	Ambient Temp. Degree F Max/Min	Filter Density (G/M2)	Filtering Level	Sound Level (dB)	Required Cutout Sizes
WPF10-115BK	\$194.00	0.15/0.15	115V	12/12 Watts	16	10	29	140/14	150	67%	39	3.62x3.62 (92x92)
WPF20-115BK	\$250.00	0.25/0.25	115V	19/19 Watts	38	28	69	122/14	350	83%	49	4.92x4.92 (125x125)
WPF25-115BK	\$342.00	0.25/0.25	115V	18/18 Watts	89	62	57	122/14	350	83%	53	8.78x8.78 (223x223)
WPF30-115BK	\$435.00	0.5/0.5	115V	43/44 Watts	169	142	89	122/14	350	83%	55	8.78x8.78 (223x223)
WPF50-115BK²	\$461.00	0.6/0.7	115V	63/76 Watts	324	249	205	122/14	350	83%	69	11.46x11.46 (291x291)
WPF60-115BK²	\$517.00	1.2/1.6	115V	122/173 Watts	410	295	225	122/14	350	83%	71	11.46x11.46 (291x291)

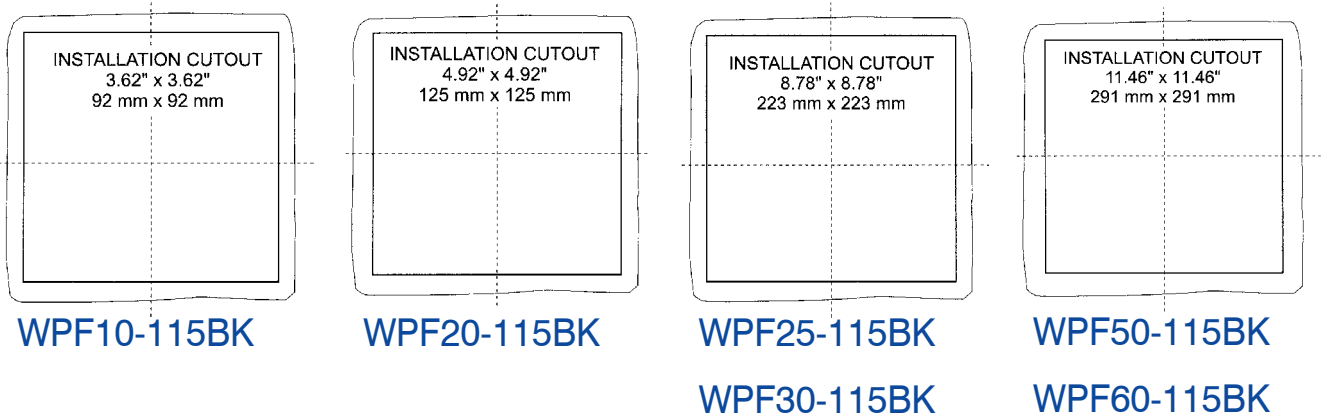
Note 1: For operation at 50Hz, reduce CFM by 15%.

Note 2: Intake fan use only
Dimensions in inches (millimeters)

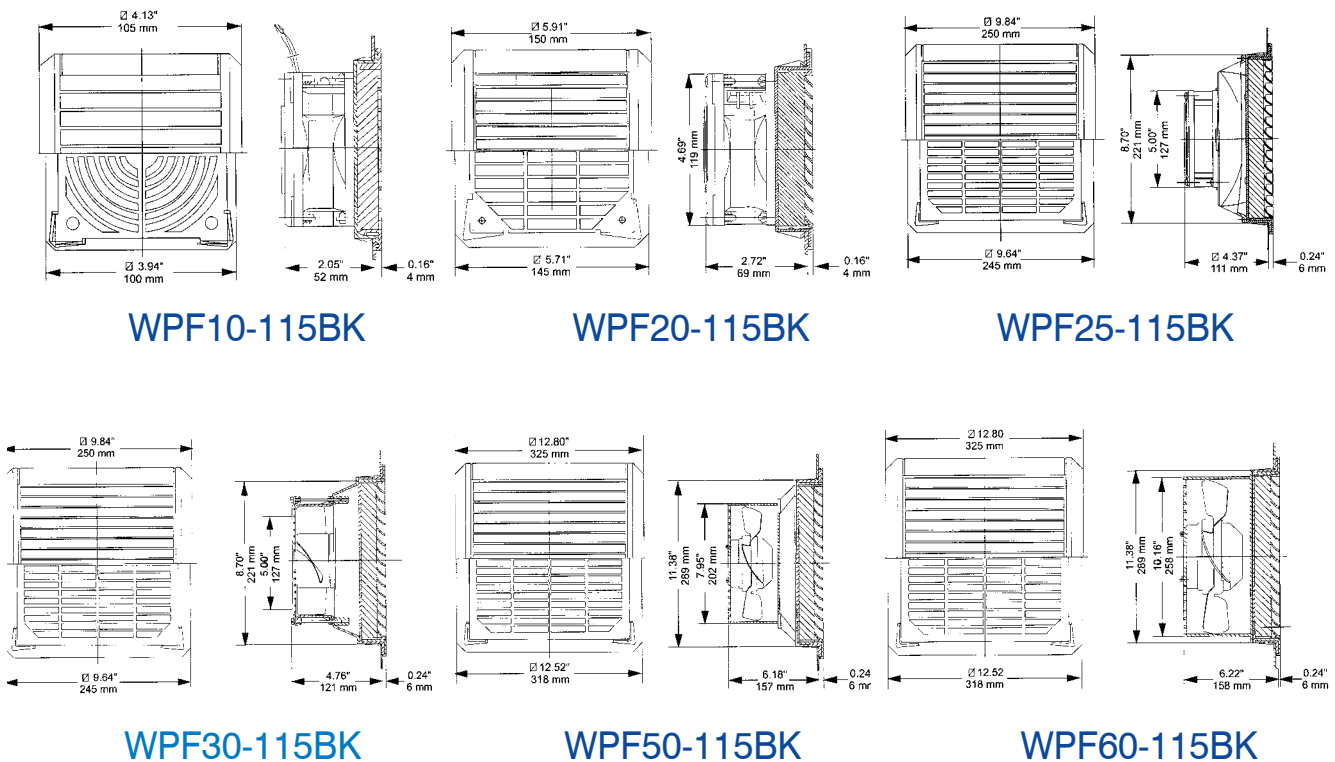
Filter Fan Kit Cutouts and Dimensions



Installation cutouts



Dimensions



Exhaust Grille and Filter Accessories



Part Number	Price	Filter Density (G/M2)	Mass Filter Level %	Required Cutout Dimensions
WPFA10BK	\$46.00	150	67%	3.62x3.62 (92x92)
WPFA20BK	\$65.00	350	83%	4.92x4.92 (125x125)
WPFA25-30BK	\$81.00	350	83%	8.78x8.78 (223x223)
WPFA50-60BK	\$87.00	350	83%	11.46x11.46 (291x291)

Dimensions in inches (millimeters)

Exhaust grille

Features

- Polycarbonate fire retardant plastic grilles, UL94-VO
- Durable, reusable filter mat included

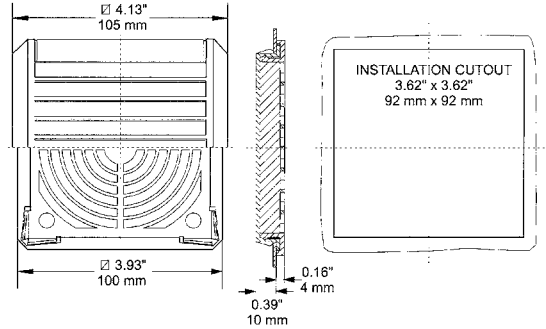
Standards

- NEMA 1 (NEMA 12 with optional WPFG Series gasket)
- IP43 (IP54 with optional WPFG Series gasket)

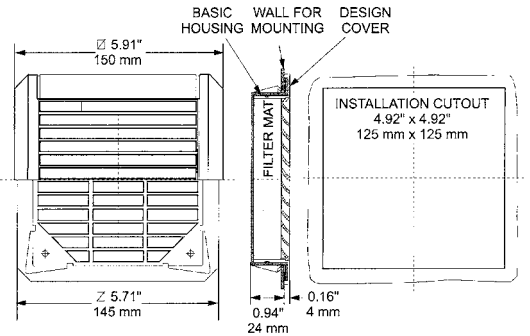
Accessories

- Gaskets (WPFG Series) recommended if installing on enclosure with textured finish

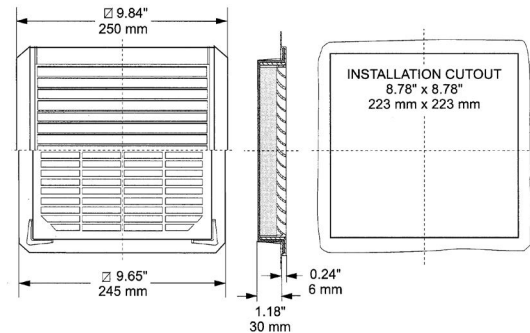
WPFA10BK



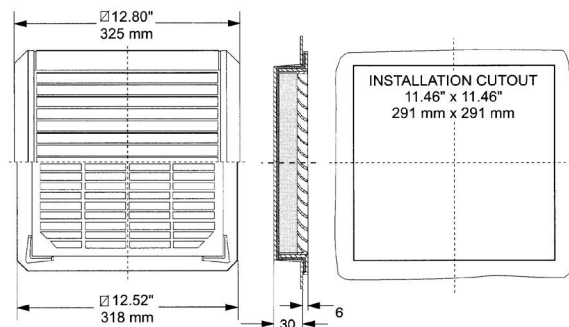
WPFA20BK



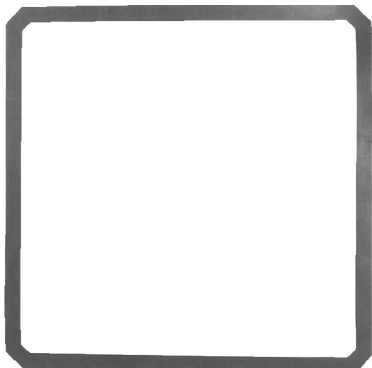
WPFA25-30BK



WPFA50-60BK



Exhaust Grille and Filter Accessories



Rubber gaskets for filter fans and exhaust grilles

Replacement filter mats

Applications

- Replacement filter mats for WPF series filterfans and WPFA series exhaust grilles

Features

- Made of washable synthetic fibers
- Reusable up to 20 times
- 100% resistant to humidity



Features

- Packaged individually
- Provide added sealing protection between enclosure and fan housing
- Recommended when fans or exhaust grilles are installed on enclosures with textured finishes

Standards

- Changes filterfan rating (WPF series) from NEMA 1 to NEMA 12 when installed

Replacement Filter Mats							
Part Number	Price	Use With This Filterfan Kit Part Number	Price	Use With This Exhaust Grille and Filter Part Number	Price	Mass Filter Lever %	Dimensions HxW
WPFM10	\$17.50	WPF10-115BK	\$194.00	WPFA10BK	\$46.00	67	3.40x3.40 (85x85)
WPFM20	\$38.50	WPF20-115BK	\$250.00	WPFA20BK	\$65.00	83	4.50x4.50 (115x115)
WPFM25-30	\$32.50	WPF25-115BK	\$342.00	WPFA25-30BK	\$81.00	83	8.30x8.30 (210x210)
		WPF30-115BK	\$435.00				
WPFM50-60	\$48.00	WPF50-115BK	\$461.00	WPFA50-60BK	\$87.00	83	11x11 (280x280)
		WPF60-115BK	\$517.00				

Rubber Gaskets					
Part Number	Price	Use With Filterfan Kit Part Number	Price	Use With Exhaust Grille Part Number	Price
WPFG10	\$11.50	WPF10-115BK	\$194.00	WPFA10BK	\$46.00
WPFG20	\$17.50	WPF20-115BK	\$250.00	WPFA20BK	\$65.00
WPFG25-30	\$20.50	WPF25-115BK	\$342.00	WPFA25-30BK	\$81.00
		WPF30-115BK	\$435.00		
WPFG50-60	\$22.00	WPF50-115BK	\$461.00	WPFA50-60BK	\$87.00
		WPF60-115BK	\$517.00		

Enclosure Shipping Schedule		
Same day	1 - 7 days	1 -10 days
Color indicates shipping lead time in business days.		

Industrial strength cooling options for your enclosure from AutomationDirect



Filter Fan Kits

- Easy filter change
- Outer door lock for outdoor models
- Impact resistant
- Weather/UV resistant -f1
- Flammability Rating: UL94V-0
- No-screw installation - except outdoor models
- Low noise
- 120VAC and 24VDC models available

Filter Fan Plus

- Easy filter change
- Hinged cover
- Impact resistant
- Weather/UV resistant-UL-f1
- Flammability Rating: UL94V-0
- No-screw installation - unique ratchet mechanism
- Low noise
- 120, 230VAC and 12, 24, 48VDC models available



Fan Kits



- All models are 115V with an expected service life of 30,000 hours
- High-performance fan motors and finger guards
- Polycarbonate fire retardant plastic grilles, UL94-V0
- Durable, reusable filter mat included
- Patented "Click and Fit" system allows for rapid filter fan and exhaust filter installation without screws

Industrial strength cooling options for your enclosure from AutomationDirect



Heat Exchangers

- For NEMA 4 and 4X enclosures
- Closed loop cooling
- Energy efficient: uses approximately the same power as a filtered fan system
- 120VAC and 24VDC models available

Air Conditioning Units

- For NEMA 12, 4, 4X type enclosures
- Digital temperature controller
- Active condensate evaporation system
- High unit efficiency
- Tough industrial construction
- Compressor protection system



Made
in the
USA



Enclosure Vortex Coolers



- For NEMA 12, 4, 4X type enclosures
- Operates on compressed air
- Stainless steel construction
- No moving parts, no maintenance required
- Vortex coolers can be “resized” for changing applications by simply replacing the generator inside the cooler. No need to purchase a new unit
- Replacing the vortex generator takes minutes