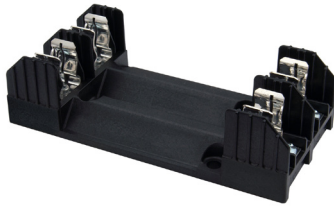


Fuse Blocks for Class RK Fuses



R60030-2SR

Description

For use with Edison LESRK and ECSR, R600, Class R fuses

Terminal type:

- SR = Screw type, clip with re-inforced spring.
- CR = Box lug type, clip with reinforced spring

Agency Approvals

- UL Listed, UL 512, Guide IZLT, File E14853
- CSA, Certified, C22.2 No.39 Class 6225-01, File 47235



R60600-3CR

Specifications

Construction: Thermoplastic
UL Flammability: 94V-0

Voltage Ratings:
R600: 600 Volts AC

Ampere Ratings: 0.10 - 600 Amps

Short-circuit current Rating: 200,000 RMS Symmetrical Amps

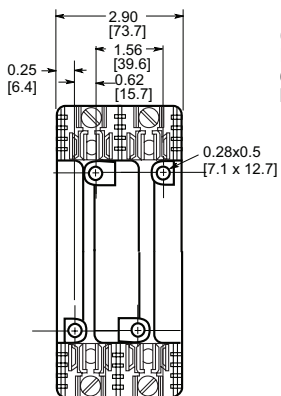
R600 Series Fuse Blocks (600V)						
Part Number	Amps	Poles	Maximum Wire Size	Pcs/Pkg	Wt. (lbs.)	Price
R60030-2SR	0.1 to 30	2	#10-18 Cu only	1	0.44	
R60600-3CR*	401 to 600	3	(2) 500MCM-4/0 Cu-Al		17.30	

* Not UL

Dimensions

inches (mm)

R60030-2SR



R60600-3CR

