

Fuse Blocks for Class J Fuses



Description

For use with Edison JDL class J fuses

Terminal type:

- C = Box lug type
- CR = Box lug type, with retaining clip
- P = Pressure plate. Clip reinforcing springs are standard on fuseblocks rated 100A and above.

Specifications

Construction: Thermoplastic,
UL Flammability; 94V-0

Voltage Ratings: 600 Volts AC

Ampere Ratings: 0.50 - 600 Amps

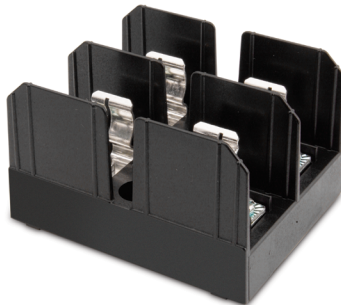
Short-circuit current Rating: 200,000 RMS
Symmetrical Amps

Agency Approvals

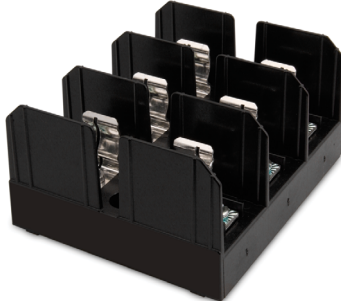
- UL Listed, UL 512, Guide IZLT, File E14853
- CSA, certified, C22.2 No. 39, Class 6225-01, File 47235



J60060-1C



J60030-2P



J60030-3P

Class J Fuse Blocks							
Part Number	Amps	Poles	Maximum Wire Size	Fig #	Pcs/Pkg	Wt. (lbs.)	Price
J60030-1P	0.5 to 30	1	#10-14 Cu	1	1	0.44	\$18.50
J60030-2P		2		2		0.35	\$32.00
J60030-3P		3		3		0.45	\$48.50
J60060-1C	31 to 60	1	#2-14 Cu-Al	1		0.44	\$20.50
J60060-2C		2		2		0.35	\$39.00
J60060-3C		3		3		0.55	\$50.00
J60100-1CR	61 to 100	1	1/0-8 Cu-Al	4		0.98	\$34.50
J60100-3CR		3		5		1.55	\$89.00
J60200-1CR	101 to 200	1	250MCM-6 Cu-Al	6		1.70	\$133.00
J60200-3CR		3		9		6.70	\$396.00
J60400-1CR	201 to 400	1	500MCM-4 Cu-Al	7		3.10	\$202.00
J60400-3CR		3		10	14.0	\$568.00	
J60600-3CR*	401 to 600	3	(2) 500MCM-4/0 Cu-Al	11	8.0	\$969.00	

* Not UL

Class J Fuseholder Dimensions

0.5 Amp to 60 Amp

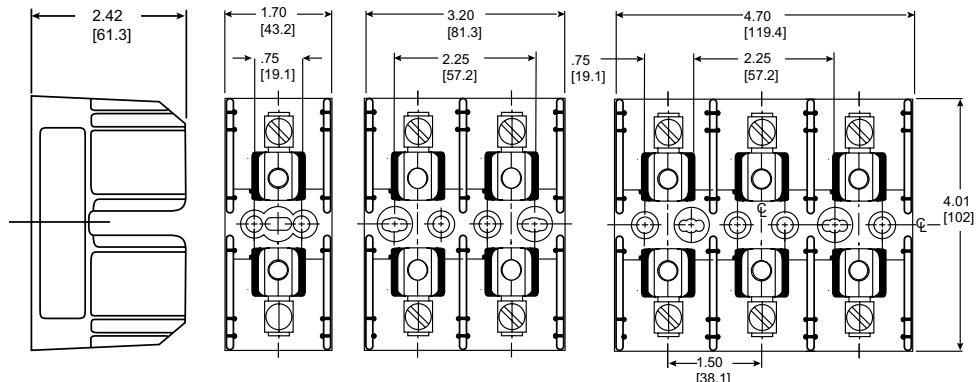


Figure 1

Figure 2

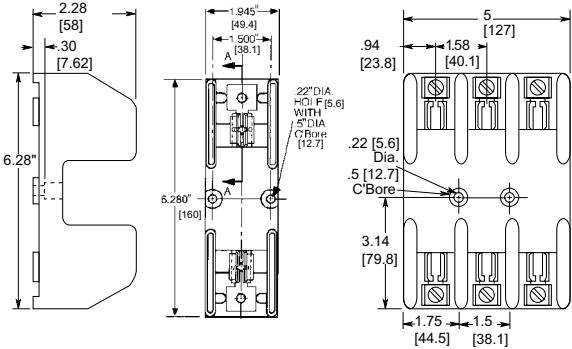
Figure 3

Note: All dimensions shown in inches [mm]

Fuse Blocks for Class J Fuses



61 Amp to 100 Amp



101 Amp to 200 Amp

Figure 4 Figure 5

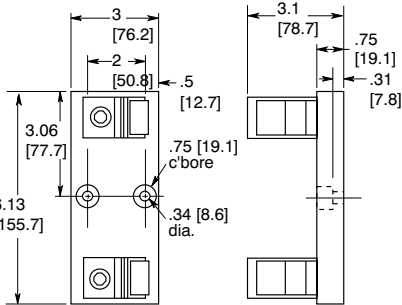


Figure 6

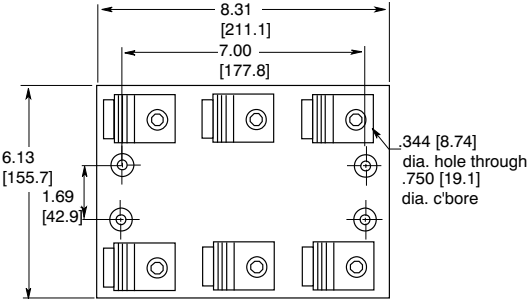
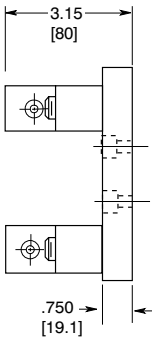


Figure 7



201 Amp to 400 Amp

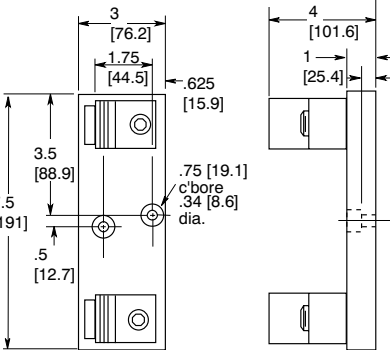


Figure 8

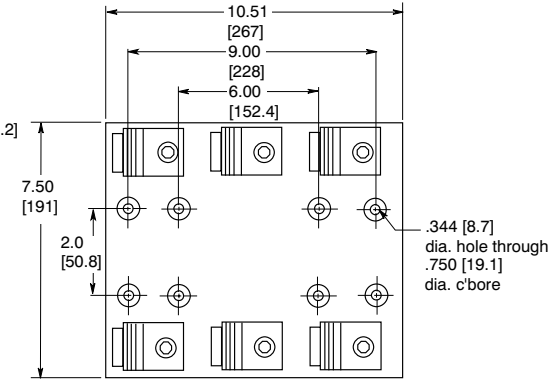
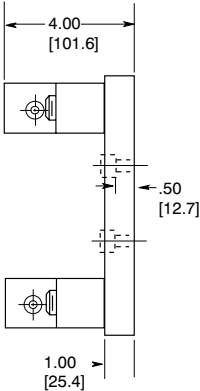


Figure 9



401 Amp to 600 Amp

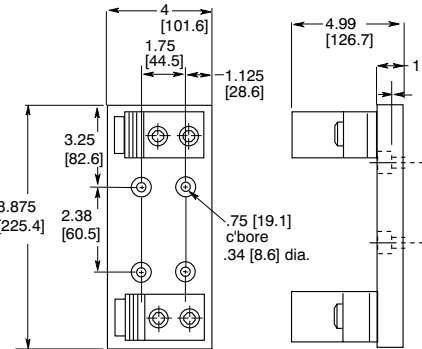


Figure 10

Note: All dimensions shown in inches [mm]

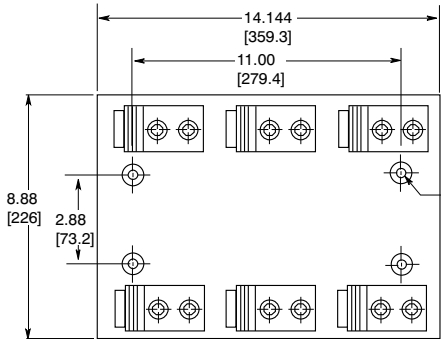


Figure 11

