

# Modular Ferrule Fuse Blocks for Midget Class and CC Fuses



## Description

BCM Series for use with Class CC fuses EDCC, HCTR and HCLR  
BMM Series for use with Midget Class Midget fuses  
MCL, MEQ, MEN & MOL

## Mounting

35mm DIN rail or panel mount

## Specifications

### Materials:

Base – Thermoplastic

Terminals – Tin-plated bimetallic copper

Covers – Thermoplastic

Screws and pressure plates – Zinc-plated steel

SCCR: 200kA

### Flammability rating:

Blocks – UL 94V0, self-extinguishing

Covers – UL 94HB, self-extinguishing

### Operating and storage temp range:

Blocks – -40° to 120°C [-40° to 248°F]

Covers – indicating -20° to 90°C [-4° to 194°F]

non-indicating -40° to 120°C [-40° to 248°F]

### Wire:

Cu – 75°/90°C [167°/194°F]

Ring or Fork terminal to fit a #10-32 screw

## Agency Approvals

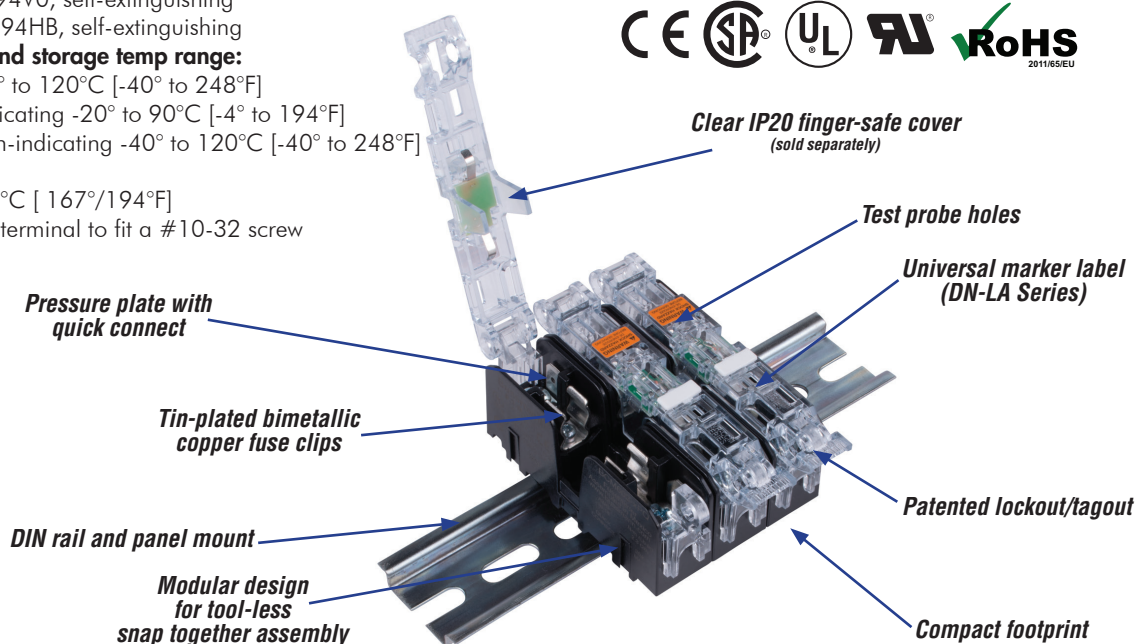
### Fuse Blocks

- BCM – UL<sup>\*</sup> Listed E14853 - IZLT  
BMM and BCCM UL Recognized E14853-IZLT2
- CSA<sup>\*</sup> Certified 47235-6225-01
- CE
- RoHS Compliant
- Conflict mineral free
- REACH Compliant

### Covers

- Covers are included in the overall UL Listing/Recognition and CSA Certification
- IP20 finger-safe
- RoHS compliant
- REACH Compliant

To obtain the most current agency approval information, see the Agency Approval Checklist section on the specific part number's web page.



Pressure Plate (with Quick Connect**) Modular Ferrule Fuse Blocks for Midget Class and CC Fuses													
Class	Part Number	Pc/ pkg	Price	Volts	Amps	Poles	Wire Range <sup>1</sup>		Torque lb-in [N·m]	Wt. lb [kg]	Covers* (Sold Separately)		
							solid and stranded	fine stranded			w/o Indication	w/ Indication <sup>3</sup>	Pc/ pkg
Midget	BMM603-1PQ	15		600V AC/DC	30	1	18-10 AWG	18-10 AWG	20 [2.3]	0.05 [0.04]	CVR-CCM-QC	CVRI-CCM-QC	3
	BMM603-2PQ	5				2				0.15 [0.06]			
	BMM603-3PQ	5				3				0.20 [0.10]			
	BMM603-1PQ-1	1				1				0.05 [0.04]			
CC	BCM603-1PQ	15				1				0.05 [0.04]			
	BCM603-2PQ	5				2				0.15 [0.06]			
	BCM603-3PQ	5				3				0.20 [0.10]			
	BCM603-1PQ-1	1				1				0.05 [0.04]			
Combo	BCCMM603-3PQ <sup>2</sup>	5				3				0.20 [0.10]			

<sup>1</sup> Ratings are for copper wire only.

<sup>2</sup> Combination modular fuse block for use with transformers. Accepts two (2) Class CC and one (1) Midget class fuse.

<sup>3</sup> Open fuse indication requires 90V minimum and closed circuit to operate.

\*Once installed, the cover cannot be removed.

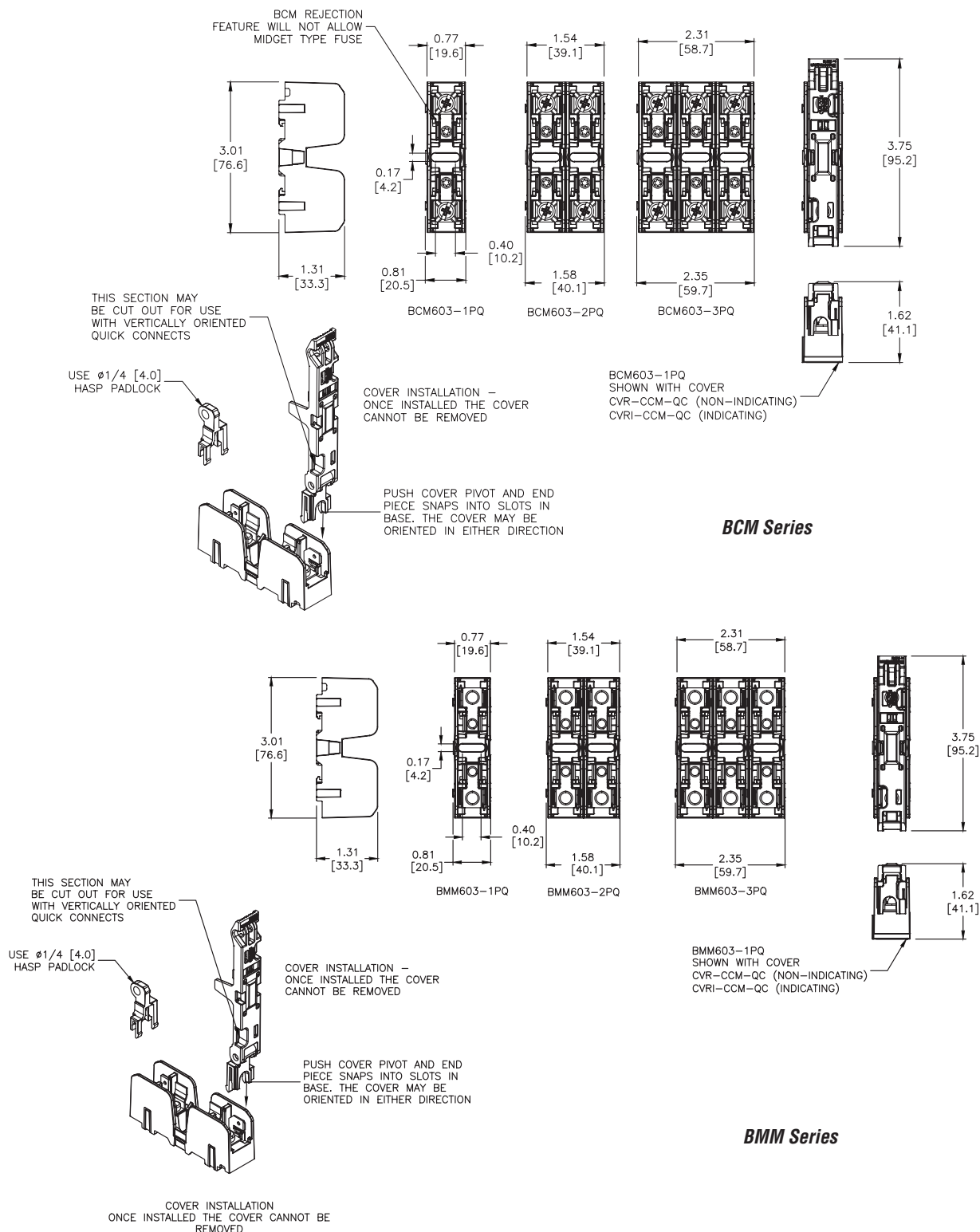
\*\*Quick connect terminal rated for 20A maximum.

# Modular Ferrule Fuse Blocks for Midget Class and CC Fuses



## Dimensions

in [mm]



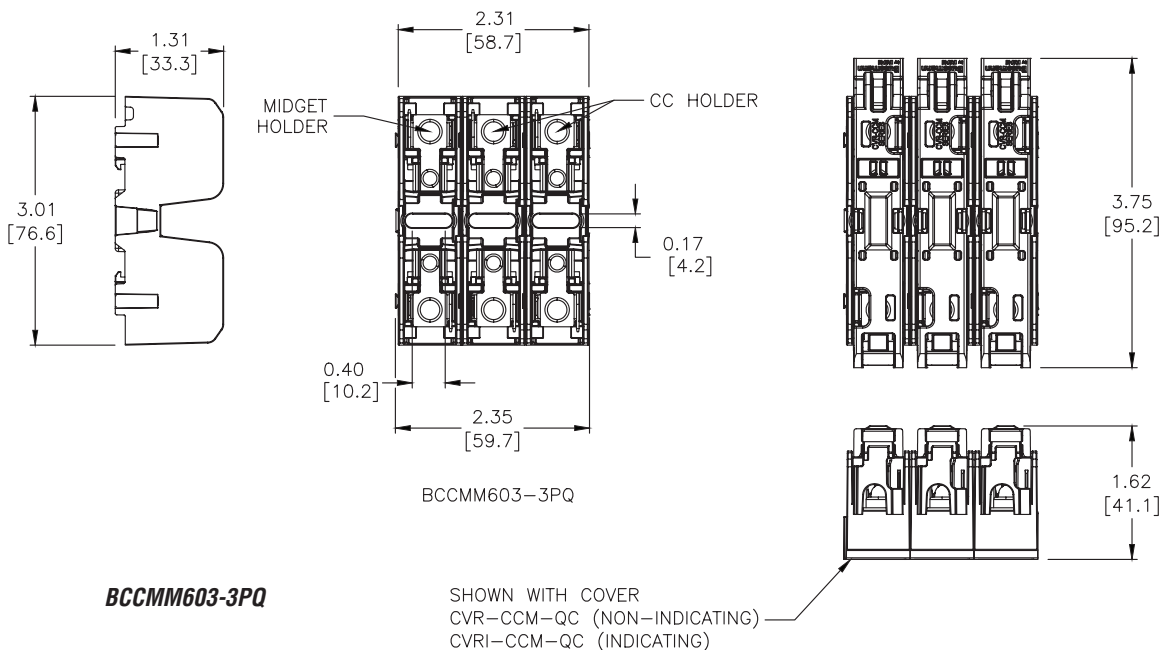
Please see our website [www.AutomationDirect.com](http://www.AutomationDirect.com) for complete engineering drawings. Dimensions are approximate. Not for construction purposes.

# Modular Ferrule Fuse Blocks for Midget Class and CC Fuses



## Dimensions

in [mm]



**BCCMM603-3PQ**

Please see our website [www.AutomationDirect.com](http://www.AutomationDirect.com) for complete engineering drawings. Dimensions are approximate. Not for construction purposes.

# Fuse Blocks for Class CC and Midget Class Fuses



## Description

These panel-mount fuse blocks are for use with Class CC Fuses (Edison EDCC, HCTR and HCLR).



## Specifications

Terminal type: Pressure plate with quick connect terminal

Base: Thermoplastic

Clips: Bright tin-plated bronze

UL Flammability: 94V-0

Ratings: 600 VAC, 30 Amps

## Agency Approvals

- UL listed to 512, Guide IZLT, File 14853
- CSA C22.2 No. 39 Class 6225-01, File LR47235
- CE Compliant

BC Series Fuseblocks						
Part Number	Amps	Poles	AWG	Pcs/Pkg	Wt. (lbs.)	Price
BC6031PQ	0.1 to 30	1	18 - 8	10	0.1	
BC6032PQ		2		8	0.16	
BC6033PQ		3		6	0.22	

CROSS REFERENCE				
EDISON	OLD EDISON	BUSSMANN	GOULD	LITTELFUSE
BC6031PQ	EMR631-77	BC6031PQ	30321R	L60030C-1PQ
BC6032PQ	EMR632-77	BC6032PQ	30322R	L60030C-2PQ
BC6033PQ	EMR633-77	BC6033PQ	30323R	L60030C-3PQ

## Description

These panel-mount fuse blocks are for use with any 13/32" x 1-1/2" Class M Fuses (Edison MCL, MEQ, MEN and MOL).



## Specifications

Terminal type: Pressure plate with quick connect terminal

Base: Thermoplastic

Clips: Bright tin-plated bronze

UL Flammability: 94V-0

Ratings: 600 VAC, 30 Amps

## Agency Approvals

- UL Recognized to 512, Guide IZLT2, File E14853
- CSA C22.2, No.39, Class 6225-01, File 47235

BM Series Fuseblocks						
Part Number	Amps	Poles	AWG	Pcs/Pkg	Wt. (lbs.)	Price
BM6031PQ	0.1 to 30	1	18 - 8	10	0.1	
BM6032PQ		2		8	0.16	
BM6033PQ		3		6	0.22	

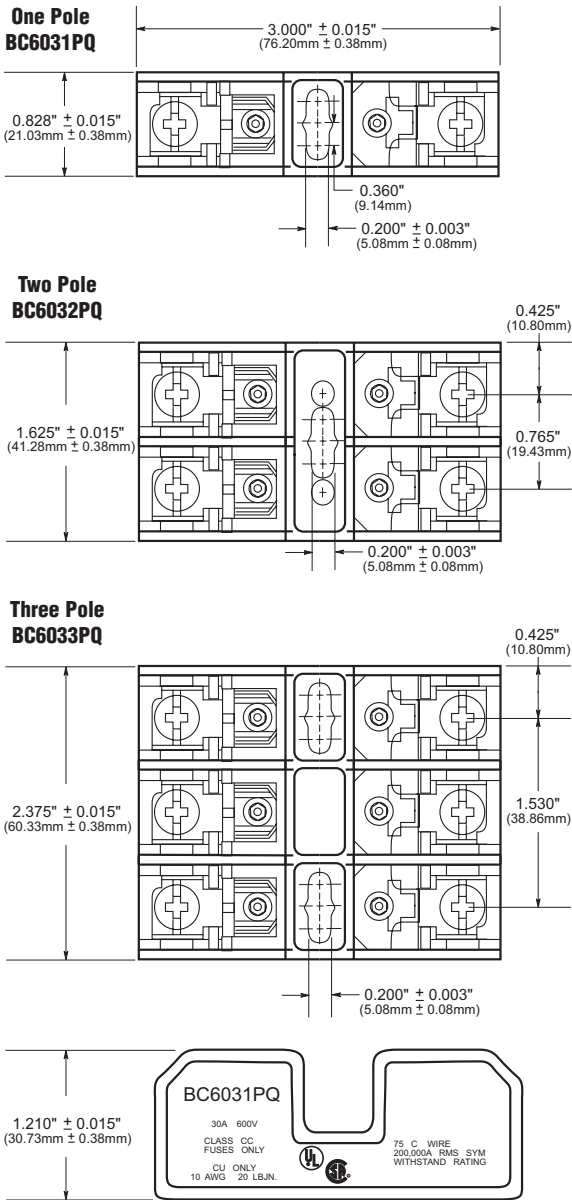
CROSS REFERENCE				
EDISON	OLD EDISON	BUSSMANN	GOULD	LITTELFUSE
BM6031PQ	EM631-44	BM6031PQ	30321	L60030M-1PQ
BM6032PQ	EM632-44	BM6032PQ	30322	L60030M-2PQ
BM6033PQ	EM633-44	BM6033PQ	30323	L60030M-3PQ



# Fuse Blocks for Class CC and Midget Class Fuses

## CC Class Dimensions -

inches(mm)



## M Class Dimensions

inches(mm)

