

## Two-position key switches



## Three-position key switches



Key Switches			Price
<b>Two-position Key Switch</b>			
(A) Key	<b>E22KB53A</b>	Selector switch, black bezel, 2-position key, "OFF ON" with <b>one N.O.</b> contact block	<--->
(A) Key	<b>E22KB62A</b>	Selector switch, black bezel, 2-position key, <b>spring from right</b> "OFF ON" with <b>one N.O.</b> contact block	<--->
<b>Three-position Key Switch</b>			
(B) Key	<b>E22KBG7RR</b>	Selector switch, black bezel, 3-position key, "ON ON ON" with two contact blocks, each having <b>one N.O. and one N.C.</b> contact. (Contact part number E22B11)	<--->
(B) Key	<b>E22KBG7D</b>	Selector switch, black bezel, 3-position key, "HAND OFF AUTO" with <b>two N.O.</b> contact blocks	<--->

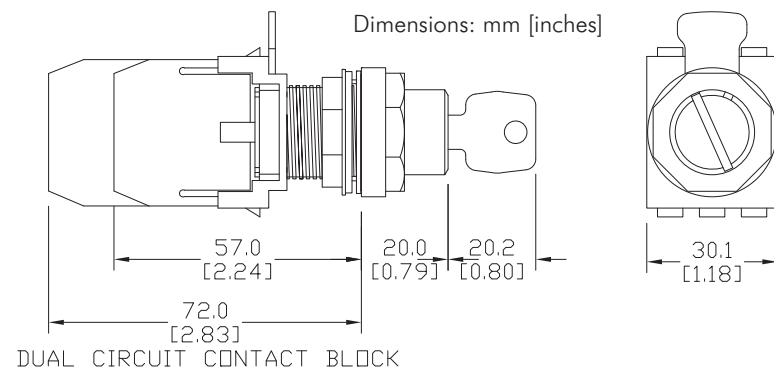
See specifications and mounting data at the beginning of this E22 series section.

**Notes:**

All E22 series key switches are keyed alike. The key is not compatible with the metal 22 mm key switches.

All E22 series key switches will hold only one single row of (2) contacts (non-stackable).

Key can be removed in all positions.



Spare keys available: part no. E22KS2

See dimensions for "back-of-panel extensions" at the beginning of this E22 series section.

## Accessories — replacement contact blocks

Replacement Contact Blocks			Price
<b>Contact Blocks</b>	<b>One block contains:</b>		
<b>E22B1*</b>	One N.C. contact (Direct Opening Action)		<--->
<b>E22B2</b>	One N.O. contact		<--->
<b>E22B11*</b>	One N.O., One N.C. contact (N.C. Direct Opening Action)		<--->
<b>E22B20</b>	Two N.O. contacts		<--->
<b>E22CB1M*</b>	Self-monitoring contact block (N.C. Direct Opening Action)		<--->

Note: See contact electrical ratings on E22 series mounting and contact ratings page in this E22 series section.

\*All N.C. contact blocks are EN 418 compliant when used with compliant operators.

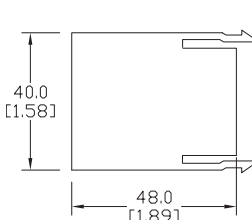
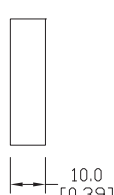
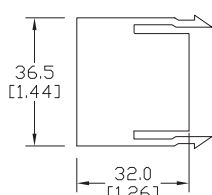
**E22B1**

**E22B2**

**E22CB1M**

**E22B11**

**E22B20**



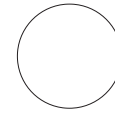
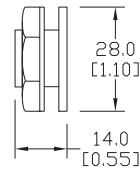
Dimensions: mm [inches]

# E22 Accessories

## Octagonal wrench



## Hole plug



Dimensions: mm [inches]

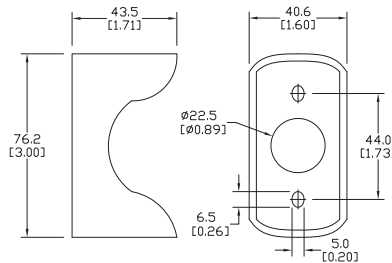
## Bulb removal tool



## Guard for E22 E-stop



Accessories		
Part number	Description	Price
<b>HT8WRENCH</b>	Octagonal wrench for tightening back-of-panel mounting nut on all Cutler-Hammer operators.	<--->
<b>E22BHP</b>	Hole plug for unused 22 mm panel holes.	<--->
<b>E22KS2</b>	Spare key for all Cutler-Hammer 22 mm selector switches (not shown)	<--->
<b>HT8LAMPTOOL</b>	Lamp extraction tool for removing lamps from switches, indicators and stacklights	<--->
<b>E22MGTA</b>	22mm yellow guard for E22LTA2QB and E22LPB2B for emergency stop applications.	<--->



Dimensions: mm [inches]

## Replacement incandescent bulbs



Replacement Incandescent Bulbs				
Part Number	Rating	Description	Quantity	Price
<b>ECX1900-5</b>	6V, 1.2 watts	6V replacement bulb for 22 mm switches and indicators. Miniature bayonet base T31/4.	pkg. of 5 bulbs	<--->
<b>ECX1902-5</b>	24V@ 80mA	24V replacement bulb for 22 mm switches and indicators. Miniature bayonet base T31/4.	pkg. of 5 bulbs	<--->
<b>ECX1904-5</b>	130V@20mA	120V replacement bulb for 22 mm switches and indicators. Miniature bayonet base T31/4.	pkg. of 5 bulbs	<--->
<b>W1121</b>	120V@20mA	Replacement bulb for Cutler-Hammer E22 full voltage indicators and switches. Does not replace the LED monoblock indicators.	pkg. of 4 bulbs	<--->
<b>W1226</b>	60V@20mA	Replacement bulb for Cutler-Hammer E22 resistor indicators, switches and pushbuttons. Does not replace the LED monoblock indicators.	pkg. of 4 bulbs	<--->
<b>W1819</b>	24V@20mA	Replacement bulb for Cutler-Hammer E22 indicators and pushbuttons. Does not rbulbeplace the LED monoblock indicators.	pkg. of 4 bulbs	<--->

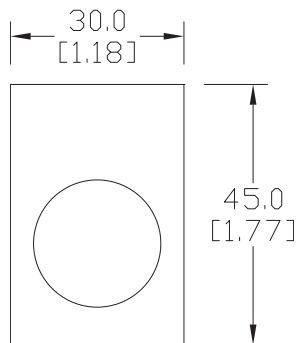
## Replacement LED lamps



Replacement LED Lamps					
Part Number	Color	Rating	Description	Quantity	Price
<b>ECX1911-2</b>	Red	24V@26mA	LED replacement lamp for miniature bayonet bases	pkg. of 2 LED bulbs	<--->
<b>ECX1912-2</b>	Green				<--->
<b>ECX1913-2</b>	Yellow				<--->
<b>ECX1914-2</b>	Blue				<--->
<b>ECX1915-2</b>	White				<--->
<b>ECX1921-2</b>	Red	120V@5mA	Works with 22 mm switches and indicators, but illumination will not be as even when used with the ECX 22 mm indicators		<--->
<b>ECX1922-2</b>	Green				<--->
<b>ECX1923-2</b>	Yellow				<--->
<b>ECX1924-2</b>	Blue				<--->
<b>ECX1925-2</b>	White				<--->

## Legend plates

Aluminum legend plates feature a plastisol backing to help prevent rotation of the operator.



Dimensions: mm [inches]

## E22VA8



Legend Plates			
Color	Part Number	Legend	Price
Black	<b>E22NS11</b>	"CLOSE"	<--->
Black	<b>E22NS12</b>	"DOWN"	<--->
Red	<b>E22NS13</b>	"EMERG. STOP"	<--->
Black	<b>E22NS15</b>	"FORWARD"	<--->
Black	<b>E22NS19</b>	"JOG"	<--->
Black	<b>E22NS25</b>	"ON"	<--->
Black	<b>E22NS26</b>	"OPEN"	<--->
Black	<b>E22NS30</b>	"REVERSE"	<--->
Black	<b>E22NS31</b>	"RUN"	<--->
Black	<b>E22NS33</b>	"START"	<--->
Red	<b>E22NS34</b>	"STOP"	<--->
Black	<b>E22NS35</b>	"UP"	<--->
Black	<b>E22NS36</b>	Blank plate	<--->
Red	<b>E22NS37</b>	Blank plate	<--->
Black	<b>E22NS38</b>	"FOR-REV"	<--->
Black	<b>E22NS39</b>	"HAND-AUTO"	<--->
Black	<b>E22NS41</b>	"JOG-RUN"	<--->
Black	<b>E22NS42</b>	"OFF-ON"	<--->
Black	<b>E22NS43</b>	"OPEN-CLOSE"	<--->
Black	<b>E22NS48</b>	"UP-DOWN"	<--->
Black	<b>E22NS50</b>	"FOR-OFF-REV"	<--->
Black	<b>E22NS51</b>	"HAND-OFF-AUTO"	<--->
Black	<b>E22NS80</b>	"POWER ON"	<--->
Black	<b>E22NS81</b>	"MOTOR RUN"	<--->
Black	<b>E22NS82</b>	"MOTOR STOP"	<--->
Black	<b>E22NL36</b>	Jumbo alum. blank plate (1.57 in wide x 1.85 in tall)	<--->
Red	<b>E22NL37</b>	Jumbo alum. blank plate (1.57 in wide x 1.85 in tall)	<--->
Red /black	<b>E22NSP77</b>	Plastic blank plate; red on one side, black on other side; either side can have letters engraved down into white plastic	<--->
Yellow	<b>E22VA8</b>	"EMERGENCY STOP" oversize yellow legend plate, 2.76" (70mm), printed	<--->

**NOTE: Legend plates also work with the GCX/ECX series 22 mm metal switches. The removal of the locator tab on the legend plate is required. This is easily accomplished with a round file or small grinder.**