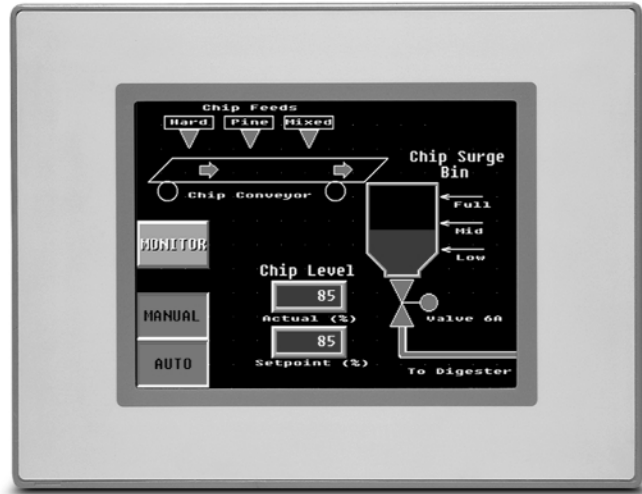




DirectTouch Panel

Overview

The DP-M321 and DP-C321 are fully programmable touch panels, providing power and flexibility through a rich set of features. The back-lit LCD display is available in either monochrome (DP-M321) or color (DP-C321). The **DirectTouch** Panel is configured using the ScreenCreator software. The software is a graphics editor with built-in panel parts such as number keypads, push-buttons, indicator lights, meters and graphs.



Features

- 64 pre-built parts: keypads, meters, graphs and number, text and time display fields, etc.
- Separate Compile and Download functions
- 5.7 inch display
- Floating Toolbars: Standard, Drawing, Control and Part
- Build custom panel parts for your specific applications
- Part Libraries: for custom and built-in parts
- Snap Grid
- Fast Compile and Download
- Windows 95/98/2000/NT compatible
- 1,048 pre-drawn ISO symbols to use in building new parts
- Upload from the Panel
- Up to 1,024 screens limited by 1Mb of screen data (typical screens are 1 to 3 K)
- Built-in Battery-backed Clock/Calendar
- Two-port Communication: RS232 and RS422 for PC and PLC at the same time (with certain PLCs)
- Communicate with multiple **DirectLogic** PLCs (RS422)
- Built-in Fault (Alarm) Screens
- Built-in Keypads: 10-key for numbers and keyboard for text
- Screen Password Protection
- 16-level Undo and Redo
- Import and Edit Bitmaps

| Specification | DirectTouch Panel Model | |
|------------------------------|--|-----------------------------------|
| | 6" Monochrome DP-M321 | 6" Color DP-C321 |
| Display Type | Backlit LCD (Blue and Gray) | Backlit LCD 16/256 |
| Display Size | 5.7" diagonal | 5.7" diagonal |
| Resolution | 320 x 240 | 320 x 240 |
| Display Brightness | 140 nits | |
| Touch Screen | 192 resistive touch cells (16x12) | 192 resistive touch cells (16x12) |
| Service Power | 24VDC (20.5-28.8VDC operating range) | |
| Power Consumption | 14 Watts @ 24VDC | |
| Enclosure | IEC standard IP65F (NEMA 4) | |
| Agency Approval | UL,CUL,CE | |
| Operating Temperature | 0° to 50° C (32 to 122°F) | |
| Storage Temperature | -10° to 60° C (14 to +140°F) | |
| Humidity | 15-85% R.H. (non-condensing) | |
| Withstand Voltage | 1000kVDC (1 minute), between power supply and protective ground (FG) | |
| Vibration | 5 to 55Hz 2G for 2 hours in the X, Y, and X axis | |
| Shock | 10G for under 12ms in the X, Y, and Z axis | |
| User Memory | 512K System Ram Memory 1 Mb Screen Data Memory | |
| Number of Screens | Up to 1024 limited by memory | |
| Real Time Clock | Standard | |
| Serial Communication | 1 - RS-232, 1 - RS422 | |
| Dimensions | 5.906"x7.402"x1.85" (150x188x47 mm) | |
| Weight | 1.4 lbs | |

Operator Interface

Cables

Regardless of which PLC you are using, you will need two cables:

- **DP-PGMCBL:** This cable is used to configure and program the panel. This is a 9-pin female to 9-pin male cable that connects your personal computer to the **DirectTouch Panel**.
- **PLC Cable:** You will also need the appropriate cable to connect your PLC to the **DirectTouch Panel**. Use the chart shown to the right to choose the correct communications cable.

Dimensions and Installation

It is important to understand the installation requirements for operator interfaces. Sometimes the size alone can dictate your choice of unit. This is especially true with respect to the depth of the unit. Please make sure you consider the space required for proper access to cables, power wiring, etc. Also, you may need to consider the environmental requirements, agency approvals, etc. for your application.

| Cables for <i>DirectTouch Panel</i> -to-PLC Connections | | | |
|---|------------------------------------|----------------------|--------------------------|
| Family | PLC (or other device) | Port | Cable |
| DirectLOGIC DL05/DL105 | DL05: D0-05 | DL05: both | DP-2CBL-A |
| | DL105: F1-130 | DL105: only one | |
| DirectLOGIC DL205 | D2-230 | Only one | DP-2CBL-A |
| | D2-240 | Top port | DP-2CBL-A |
| | | Bottom port | DP-2CBL-A |
| | D2-250 | Top port | DP-2CBL-1 |
| | | Bottom port | DP-DSCBL-2 |
| D2-DCM (module) | Only one | DP-3CBL-2 | |
| DirectLOGIC DL305 | D3-330/330P | Requires DCU* | DP-3CBL-2 |
| | D3-340 | Top port | DP-3CBL |
| | | Bottom port | DP-3CBL |
| | D3-350 | Top port | DP-2CBL |
| | | Bottom port | DP-3CBL-2 |
| DirectLOGIC DL405 | D4-430 | Top port (15-pin) | DP-4CBL |
| | | Bottom port (25-pin) | DP-3CBL-2 |
| | D4-440 | Top port | DP-4CBL |
| | | Bottom port | DP-3CBL-2 |
| | D4-450 | Phone Jack | DP-2CBL-A |
| | | Top port (15-pin) | DP-4CBL |
| | | Bottom port (25-pin) | DP-3CBL-2 |
| D4-DCM (module) | Only one | DP-3CBL-2 | |
| Allen-Bradley SLC 500 | 5/03, 5/04 Micrologix 1000/1500 | Bottom port | DP-ABCBL-1 DP-ABCBL-2 |

