

# Direct LOGIC PLUS

Due to the popularity of our *Direct*LOGIC driver object and other features included in the Lookout*Direct* software package, we are pleased to offer *Direct*LOGIC PLUS for National Instruments Lookout.

## Overview

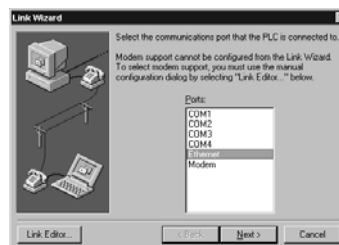
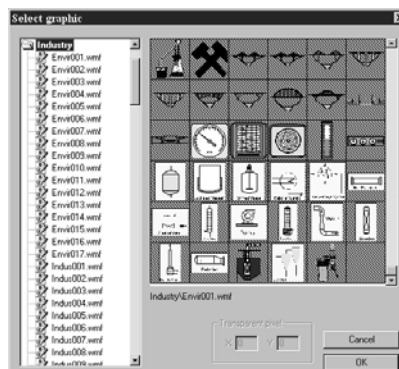
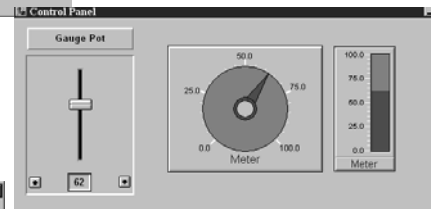
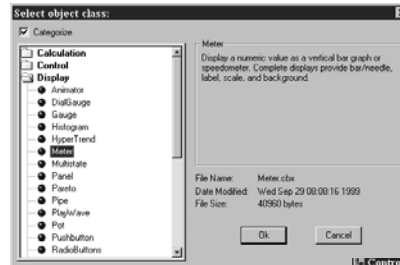
*Direct*LOGIC PLUS enables National Instruments Lookout users to add on the exclusive features of Lookout*Direct*. The main features included are:

- *Direct*LOGIC Driver Object — this enables users to connect to *Direct*LOGIC PLCs via Ethernet and serial using either K-sequence or *Direct*Net protocol.
- Meter Object — an easy-to-use and scalable dial gauge or bar graph type display for monitoring any numeric signal.
- Over 300 graphics — additional graphics install into the appropriately defined folders in a scalable .wmf format.

## DirectLOGIC driver object features

The Driver Object is the biggest feature and the driving force behind this product. The Ethernet connection to ECOM modules that is included is the best feature because of the high speed and flexibility it provides your application.

- Allows for connection to DL05/06 DL205 and DL405 ECOMs
- Connection to DL105 and DL305 PLCs
- Capability of using *Direct*SOFT and Lookout simultaneously over the same cable (driver versions must match)
- Link Wizard automatically identifies CPU and configures your settings



Part Number	Price	Description
PC-DL-PLUS	<-->	<i>Direct</i> LOGIC PLUS Driver Object for National Instruments Lookout Software. Allows for connection from Lookout to the <i>Direct</i> LOGIC line of PLCs

# LookoutDirect System Requirements



One of the nice things about LookoutDirect software is that it can easily run on industrial PCs or inexpensive, off-the-shelf PCs. The software comes on CD-ROM so your development system PC will need a CD-ROM drive. Run-time systems do not require a CD-ROM drive, but if they don't have one they will need a network connection to load the run-time engine and application.

## System requirements

- Windows 98/2000, XP-compatible (2000 or XP Pro recommended) (Does not support Windows Vista.)

### Minimum:

Pentium/Celeron 233 Mhz  
32MB RAM

### Recommended:

- Pentium/Celeron 333 Mhz
- 64 MB RAM or greater
- 50 MB available hard drive disk space
- CD-ROM drive
- Color monitor, with at least 640x480 resolution
- USB port

## Ordering the software

**Development package** — includes one Development Environment license, one Run-time Engine license, one key that supports development or runtime, and all drivers.

**Run-time package** — includes one run-time engine license, one run-time key, and all drivers.

*You need to purchase one Development Package for each PC used for application development.*

*If the PC used in your run-time application is not your development PC, you also need to purchase a Runtime Package for the HMI PC.*

**Hardware key** — The hardware key must be connected to a USB port for the software to run.

## Defining the software pieces

**Development environment** — is used to develop and debug the control application program (like DirectSOFT in the case of PLCs). You can use the Development Software on one PC to create many different projects which can run on many Runtime Engines.

**Run-time engine** — is like the firmware in the CPU of a PLC. This software will run the application for your process.

Part Number	Price	Description
<b>PC-LKD-DEV</b>	<--->	LookoutDirect Development package
<b>PC-LKD-RTE</b>	<--->	LookoutDirect Runtime package
<b>PC-LKD-DEVUPG (See description below)</b>	<--->	LookoutDirect Development package upgrade
<b>PC-LKD-RTEUPG (See description below)</b>	<--->	LookoutDirect Runtime package upgrade
<b>PC-DL-PLUS</b>	<--->	DirectLOGIC Plus Driver Object for National Instruments Lookout Software. Allows for connection from Lookout to the DirectLOGIC line of PLCs

**PC-LKD-DEVUPG** — LookoutDirect Version 4.5 Development Package upgrade. Upgrade development package for any LookoutDirect 3.8.x to Version 4.51 or higher. Includes software on CD-ROM and manual.

**PC-LKD-RTEUPG** — LookoutDirect Version 4.5 Runtime Package upgrade. Upgrade runtime package for any LookoutDirect 3.8.x to Version 4.5 or higher. Includes software on CD-ROM and manual.

- PLC Overview
- DL05/06 PLC
- DL105 PLC
- DL205 PLC
- DL305 PLC
- DL405 PLC
- Field I/O
- Software
- C-more HMIs
- Other HMI
- AC Drives
- Motors
- Steppers/Servos
- Motor Controls
- Proximity Sensors
- Photo Sensors
- Limit Switches
- Encoders
- Current Sensors
- Pushbuttons/Lights
- Process
- Relays/Timers
- Comm.
- TB's & Wiring
- Power
- Circuit Protection
- Enclosures
- Appendix
- Part Index