

# Wiring Accessories – Wiring Kits

## Wiring ferrule, connector, and terminal kits

Kit	Description	Price
<b>BM-80409</b>	Connector assortment kit; Includes: assorted PVC ring, fork, and butt connectors; case; BM-534 crimping tool	
<b>BM-80418</b>	Ferrule assortment kit; Includes: assorted ferrules; case; ferrule crimping tool (tool not sold separately)	

BM-80409 Contents	
Part #	Quantity
<b>BM-00119</b>	25
<b>BM-00125</b>	25
<b>BM-00120</b>	25
<b>BM-00126</b>	25
<b>BM-00160</b>	25
<b>BM-00170</b>	25
<b>BM-00225</b>	25
<b>BM-00220</b>	25
<b>BM-00226</b>	25
<b>BM-00260</b>	25
<b>BM-00319</b>	25
<b>BM-00325</b>	25
<b>BM-00326</b>	25
<b>BM-00360</b>	25
<b>BM-00270</b>	25
<b>BM-00370</b>	25
<b>BM-534</b>	1

BM-80418 Contents	
Part #	Quantity
<b>BM-00501</b>	50
<b>BM-00502</b>	50
<b>BM-00503</b>	50
<b>BM-00504</b>	50
<b>BM-005041</b>	50
<b>BM-00506</b>	50
<b>BM-005061</b>	50
<b>BM-00508</b>	50
<b>BM-005081</b>	50
<b>BM-541 * (crimp tool)</b>	1

*\* BM-541 crimping tool not sold separately*

**BM-80418  
ferrule kit**



**Crimping tool included!**

**BM-80409  
PVC ring, fork, butt terminal kit**



**Crimping tool included!**

## Ferrule - Wire Size chart for AutomationDirect PLCs

Ferrule - Wire Size Chart for AutomationDirect PLCs						
Wire Size (AWG)		20	18	16	14	12
<b>PLC Terminals</b>	<b>Ferrule Part #</b>	<b>BM-00502</b>	<b>BM-00503</b>	<b>BM-00504</b>	<b>BM-00506</b>	<b>BM-00508</b>
	<b>Crimping Tool</b>	<b>DN-CT-xxx tool with DN-CT-D4 die - or - BM-537 tool</b>				
	CLICK	Y	Y	N	N	N
	DL05	Y	N	N	N	N
	DL06	Y	Y	N	N	N
	DL105	Y	Y	N	N	N
	205 8 pt	Y	Y	Y	N	N
	205 16 pt	Y	Y	N	N	N
	305 8 pt	Y	Y	Y	Y	N
	305 16 pt	Y	Y*	N	N	N
	405 8 pt	Y	Y	Y	Y	N
	405 16 pt	Y	Y	Y	Y	N
	Terminator I/O screwless**	Y	Y	Y	Y	N
	Terminator I/O screw	Y	Y	Y	Y	N

**\*Note: Y for D3 Series; N for F3 series**  
**\*\*Orient ferrule with crimp flat side facing outward from terminal block to prevent pop-out.**

# Wiring Accessories



## Crimping Tools

Crimping Tools			
Part Number	Description	Weight	Price
<b>K70ZA000113</b>	Crimping tool for use with single ferrules AWG 20 - 10 (0.5 - 6 mm <sup>2</sup> ) and twin ferrules AWG 2 x 18 - 2 x 12 (2 x 0.75 - 2 x 4 mm <sup>2</sup> ). 5 crimping positions. With and without insulating collar. Conforms to DIN 46228 part 1 and 2.	0.74 lb (335g)	
<b>K70ZA000117</b>	Crimping tool for use with single ferrules AWG 10 - 4 (6 - 25 mm <sup>2</sup> ) and twin ferrules AWG 2 x 12 - 2 x 8 (2 x 4 - 2 x 10 mm <sup>2</sup> ). 4 crimping positions. Conforms to DIN 46228 part 1 and 4.	1.19 lb (540g)	
<b>K70ZA000118</b>	Crimping tool for use with single ferrules AWG 2 - 1 (35 - 50 mm <sup>2</sup> ) and twin ferrules AWG 2 x 6 (2 x 16 mm <sup>2</sup> ). 2 crimping positions. Conforms to DIN 46228 part 1 and 4.	1.19 lb (540g)	
<b>K70ZA000130</b>	Crimping tool for PVC-insulated terminals AWG 20 - 10 (0.5 - 6 mm <sup>2</sup> ). 3 crimping positions.	1.12 lb (510g)	

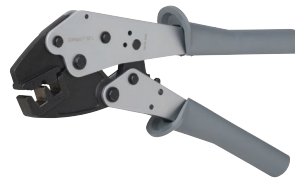
**K70ZA000113**



**K70ZA000130**



**K70ZA000118**



**K70ZA000117**



*Note: Z&F crimping tools recommended by the ferrule manufacturer before terminating in terminal blocks, wire connectors, or end-product terminals (such as starters, etc.).*

Crimping Tools Cross Reference					
	Part Number		K70ZA000113	K70ZA000117	K70ZA000118
	Standard	DIN			
Single Ferrules	V30AE000006	V30AE000038	✓		
	V30AE000009	V30AE000041	✓		
	V30AE000013	V30AE000045	✓		
	V30AE000016	V30AE000048	✓		
	V30AE000017	V30AE000049	✓		
	V30AE000052	V30AE000052	✓		
	V30AE000053	V30AE000053	✓		
	V30AE000055	V30AE000055	✓		
	V30AE000056	V30AE000056	✓		
	V30AE000025	V30AE000058	✓	✓	
	V30AE000026	V30AE000059	✓	✓	
	V30AE000027	V30AE000060		✓	
	V30AE000028	V30AE000061		✓	
	V30AE000029	V30AE000062		✓	
	V30AE000030	V30AE000063		✓	
	V30AE000031	V30AE000064		✓	
V30AE000033	V30AE000067			✓	
V30AE000035	V30AE000070			✓	
Twin Ferrules	V30AE001134	V30AE001145	✓		
	V30AE000606	V30AE000607	✓		
	V30AE000733	V30AE000734	✓		
	V30AE000608	V30AE000609	✓		
	V30AE000735	V30AE000736	✓		
	V30AE000623	V30AE000625	✓		
	V30AE000737	V30AE000738	✓		
	V30AE000611	V30AE000611	✓		
	V30AE000748	V30AE000748	✓		
	V30AE001148	V30AE001148	✓	✓	
	V30AE001139	V30AE001150		✓	
	V30AE001141	V30AE001152		✓	
	V30AE001143	V30AE001154			✓

# Wiring Accessories – Crimping Tools

## Crimping Tools Overview

Our high-quality industrial crimping tools are designed to crimp a wide range of insulated and non-insulated crimping terminals, ferrules, and connectors. They feature ergonomic handles and

controlled-cycle ratcheting mechanisms to guarantee a uniform crimp every time. Choose from fixed or interchangeable die tools, or tool/die sets with multiple dies.

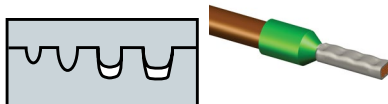


**BM-53x Crimping Tool**

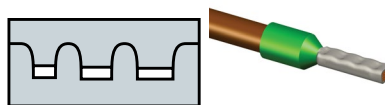


**BM-5345 Crimping tool and die set**

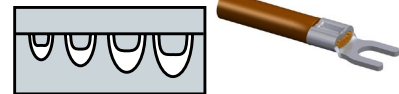
Fixed-Die Crimping Tools				
Part #	Description	Fig.	Pcs/Pkg	Price Each
<b>BM-537</b>	Ferrule crimping tool: 22 to 12 AWG for ferrules 0.5-4 mm <sup>2</sup>	1	1	
<b>BM-539</b>	Ferrule crimping tool: 10 to 6 AWG for ferrules 6-16 mm <sup>2</sup>	2	1	
<b>BM-533</b>	Ferrule crimping tool: 8 to 2 AWG for ferrules 10-35 mm <sup>2</sup>	3	1	
<b>BM-534</b>	Connector crimping tool: 22 to 10 AWG, for ring, spade, and disconnect terminals	4	1	
<b>BM-5345</b>	Crimping tool & Die set; includes crimping tool, case, and 5 die sets. (BM-537, BM-539, BM-535, BM-534 and BM-531 (Fig. 5) See below for descriptions.	N/A	1	



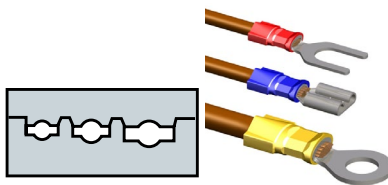
**Fig. 1 (BM-537) End Sleeve Terminals 22-12 AWG (0.5-4 mm<sup>2</sup>)**



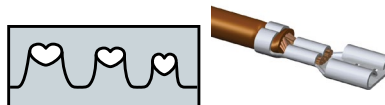
**Fig. 2 (BM-539) End Sleeve Terminals 10-6 AWG (6-16mm<sup>2</sup>)**



**Fig. 3 (BM-535) Uninsulated Copper Terminals 20-8 AWG (0.5-10 mm<sup>2</sup>)**



**Fig. 4 (BM-534) Insulated Terminals 22-10 AWG (0.25-6 mm<sup>2</sup>)**



**Fig. 5 (BM-531) Barrel Open Terminals 20-10 AWG (0.5-6 mm<sup>2</sup>)**

Interchangeable-Die Crimping Tools			
Part #	Description *	Pcs /Pkg	Price Each
<b>DN-CT-HDL</b>	Crimping tool handle for DN-CT-Dx dies (dies NOT included) Approximate dimensions: 9.75 x 2.52 x 0.95 in (234 x 64 x 24 mm); 16.2 oz (460g)	1	
<b>DN-CT-D1</b>	Die set for DN-CT-HDL; 26-22 & 12-10 AWG (0.1-0.4 & 4-6 mm <sup>2</sup> ) green & yellow insulated terminals	1	
<b>DN-CT-D2</b>	Die set for DN-CT-HDL; 22-14 AWG (0.5-2.5 mm <sup>2</sup> ) red & blue insulated terminals	1	
<b>DN-CT-D3</b>	Die set for DN-CT-HDL; 22-10 AWG (0.5-6 mm <sup>2</sup> ) non-insulated terminals	1	
<b>DN-CT-D4</b>	Die set for DN-CT-HDL; 24-8 AWG (0.25-10 mm <sup>2</sup> ) wire ferrules	1	
<b>DN-CT-D5</b>	Die set for DN-CT-HDL; 6-4 AWG (16-25 mm <sup>2</sup> ) wire ferrules	1	
<b>DN-CT-D6</b>	Die set for DN-CT-HDL; 2-1/0 AWG (35-50 mm <sup>2</sup> ) wire ferrules	1	
<b>DN-CT-D7</b>	Die set for DN-CT-HDL; 22-10 AWG (0.5-6 mm <sup>2</sup> ) open barrel non-insulated terminals	1	
<b>DN-CT-D8</b>	Die set for DN-CT-HDL; 8-pin (RJ45) modular plugs	1	
<b>DN-CT-D9</b>	Die set for DN-CT-HDL; 6-pin (RJ11/RJ12) modular plugs	1	
<b>DN-CT-SET</b>	Crimping tool modular system; includes handle and three die sets (DN-CT-HDL + DN-CT-D2 + DN-CT-D4 + DN-CT-D5) The die pairs are held together for easy handling, and interchange without separate tools.	1	

\* The DN-CT-xx series features a crimping tool with multiple interchangeable dies separately available. The die pairs are held together for easy handling, and can be interchanged without separate tools.



**DN-CT-HDL Crimping Tool**

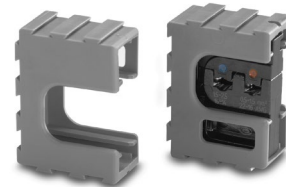


**DN-CT-SET Crimping Tool & Die Set**

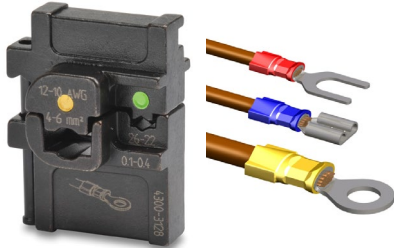
# Wiring Accessories – Crimping Tool

## DN-CT-Dx Interchangeable Crimping Dies (for DN-CT-xxx crimping tool only)

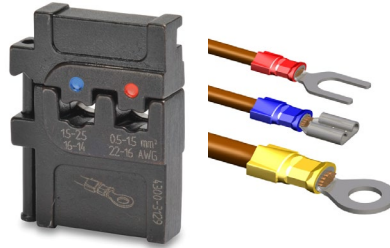
*These dies are held together for easy handling, and can be interchanged without additional tools. All DN-CT-Dx dies have been tested on leading brands of connectors to ensure quality connections. Dies come in modular holders that can be connected together when not in use.*



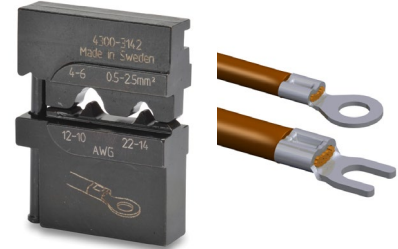
**DN-CT-Dx die & holder**



**DN-CT-D1** (4300-3128)  
Insulated Terminals & Connectors  
26–22 AWG & 12–10 AWG  
[Green & Yellow] (0.1–0.4 & 4–6 mm<sup>2</sup>)



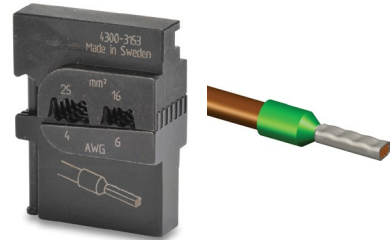
**DN-CT-D2** (4300-3129)  
Insulated Terminals & Connectors  
22–14 AWG  
[Red & Blue] (0.5–2.5 mm<sup>2</sup>)



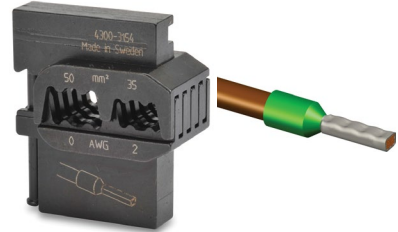
**DN-CT-D3** (4300-3142)  
Non-Insulated Terminals & Connectors  
22–10 AWG (0.5–6 mm<sup>2</sup>)



**DN-CT-D4** (4300-3127)  
Wire Ferrules  
24–8 AWG (0.25–10 mm<sup>2</sup>)



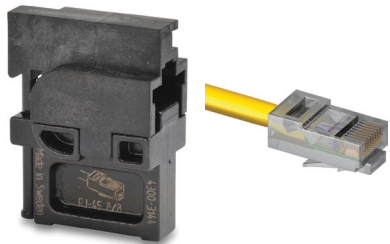
**DN-CT-D5** (4300-3153)  
Wire Ferrules  
6–4 AWG (16–25 mm<sup>2</sup>)



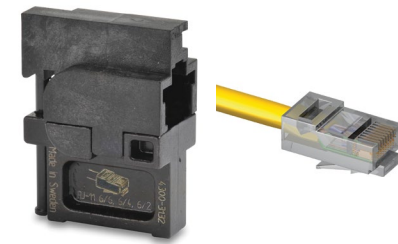
**DN-CT-D6** (4300-3154)  
Wire Ferrules  
2–1/0 AWG (35–50 mm<sup>2</sup>)



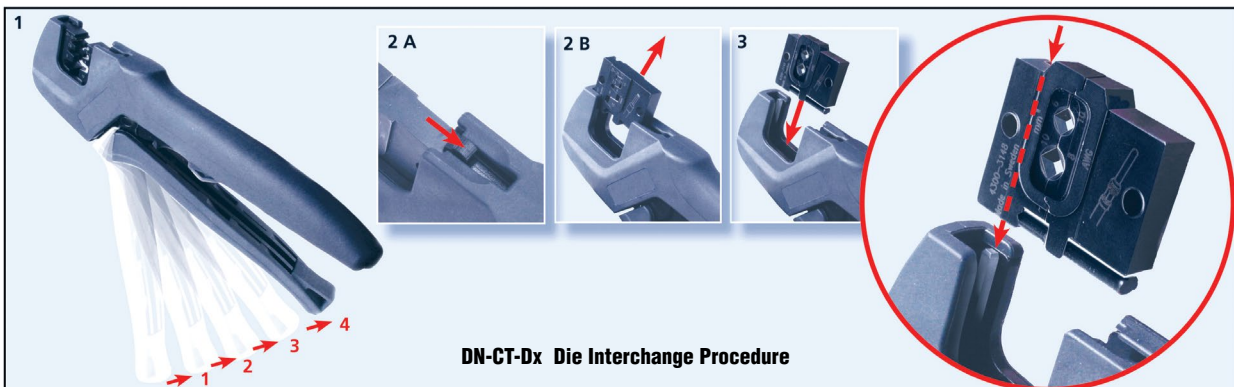
**DN-CT-D7** (4300-3146)  
Non-Insulated Open-Barrel Terminals  
22–10 AWG (0.5–6 mm<sup>2</sup>)



**DN-CT-D8** (4300-3144)  
8-pin Modular Plugs  
RJ45



**DN-CT-D9** (4300-3132)  
6-pin Modular Plugs  
RJ11/RJ12



**DN-CT-Dx Die Interchange Procedure**

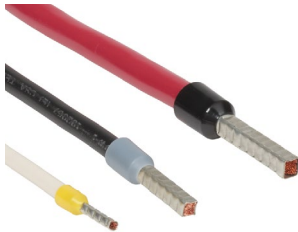


# Wiring Accessories – Self-Adjusting Crimping Tools

Lightweight, compact, comfortable and self-adjusting tool for crimping ferrules/wire end sleeves.



**Square  
DN-FE-16S**



**Hexagonal  
DN-FE-16H**



## Features

- Ratchet (with emergency release) to ensure crimps are completed according to specification
- Well balanced to avoid slipping out of the hand
- Non-slip grip pad for applying pressure against a surface
- Ergonomically shaped handles with hardness and surface textures selected for comfortable frequent use
- Low handle force for larger ferrule sizes
- Compact and light-weight design for easy access within confined spaces
- Hole for attaching a safety strap
- Square or Hexagonal crimp profile

Self-Adjusting Crimping Tools Specifications	
<b>Connectors</b>	Insulated and non-insulated ferrules/wire end sleeves
<b>Capacity</b>	0.14 - 10.0 mm <sup>2</sup> /AWG 26-8
<b>Crimp Length</b>	Up to 0.47 in [12mm]
<b>Lifespan</b>	Tested to 50,000 cycles
<b>Length</b>	6.93 in [176mm]
<b>Width</b>	1.02 in [26mm]
<b>Height</b>	2.44 in [62mm]
<b>Handle spread (closed)</b>	1.81 in [46mm]
<b>Handle spread (open)</b>	5.59 in [142mm]
<b>Weight</b>	Square: 0.80 lb [362g] Hexagonal: 0.81 lb [371g]

Self-Adjusting Crimping Tools		
Part #	Description	Price Each
<b>DN-FE-16S</b>	Wire crimping tool, self-adjusting, square profile, 26 to 8 AWG capacity. For use with insulated and non-insulated wire ferrules.	
<b>DN-FE-16H</b>	Wire crimping tool, self-adjusting, hexagonal profile, 26 to 8 AWG capacity. For use with insulated and non-insulated wire ferrules.	

The finished square and hexagonal crimps have the same cross-sectional area. Choosing between the square and hexagonal crimp tools depends on the shape of the hole where the wire will be inserted. Square crimps fit better in rectangular holes while hexagonal crimps fit better in round holes.

