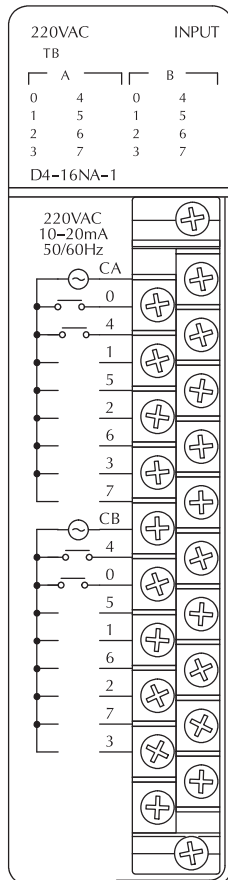
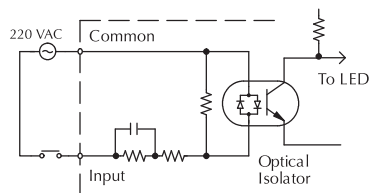
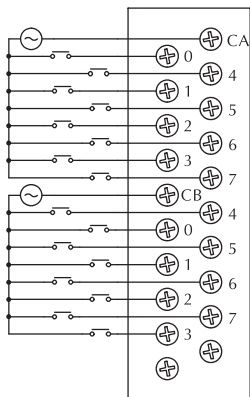
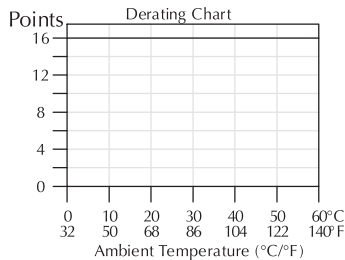


AC and AC/DC Input Modules

D4-16NA-1 AC Input <--->	
Inputs per Module	16
Commons per Module	2 (isolated)
Input Voltage Range	187-238VAC
Peak Voltage	265VAC
AC Frequency	47-63Hz
ON Voltage Level	>150V
OFF Voltage Level	<40V
Input Impedance	22KΩ
Input Current	10.0mA @ 220VAC
Minimum ON Current	7mA
Maximum OFF Current	2mA
Base Power Required 5V	150mA max
OFF to ON Response	5-30ms
ON to OFF Response	10-50ms
Terminal Type (included)	Removable (D4-16IOCON)
Status Indicators	Logic side
Weight	9.2oz. (260g)

See the Terminal Blocks & Wiring Solutions section in this catalog for part numbers of ZIPLink cables and terminal blocks compatible with this module.



D4-16NE3 AC/DC Input <--->	
Inputs per Module	16 (sink/source)
Commons per Module	2 (isolated)
Input Voltage Range	10.2-26.4VAC/VDC
Peak Voltage	37.5VAC/VDC
AC Frequency	47-63Hz
ON Voltage Level	>9.5V
OFF Voltage Level	<3.0V
Input Impedance	3.2 KΩ @ 12V 2.9 KΩ @ 24V
Input Current	3.8mA @ 12V 8.3mA @ 24V
Minimum ON Current	4mA
Maximum OFF Current	1.5mA
Base Power Required 5V	150mA max
OFF to ON Response	5-40ms
ON to OFF Response	10-50ms
Terminal Type (included)	Removable (D4-16IOCON)
Status Indicators	Logic side
Weight	8.8oz. (250g)

See the Terminal Blocks & Wiring Solutions section in this catalog for part numbers of ZIPLink cables and terminal blocks compatible with this module.

