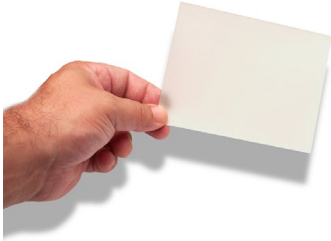


# C-more Micro 4-inch EA1 Panel Accessories

## Clear Screen Overlay

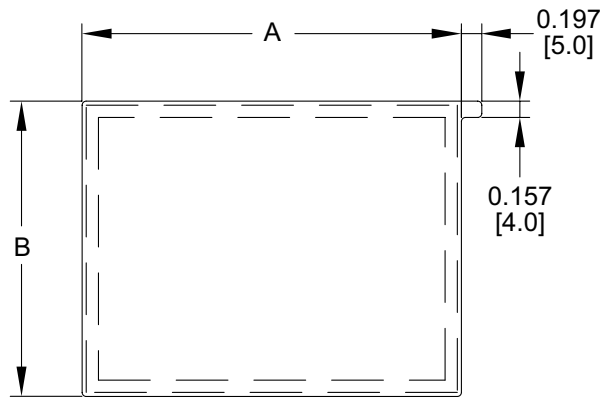
Optional clear screen overlay used to protect **C-more** Micro displays from minor scratches and wear. Package contains 3 clear screen overlays.

Part No. [EA-4-COV2](#)



### Dimensions

Units: inches [mm]



Part Number	Dimensions - inch [mm]	
	A	B
<b><i>EA-4-COV2</i></b>	3.66 [93.0]	2.85 [72.5]

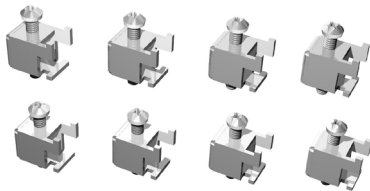
# C-more Micro 4-inch EA1 Replacement Parts

The optional replacement parts can be used to replace damaged, worn or lost EA1-T4CL components.

## Replacement parts at a glance:

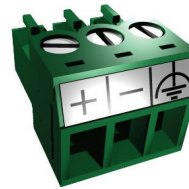
Part Number	Description	Price
<a href="#"><u>EA-MG-BZ2-BRK</u></a>	<b>C-more</b> Micro panel mounting brackets, replacement. Package of 8. For use with <b>C-more</b> Micro 4in and 6in panels, all 6in bezels, and 3in bezel EA-MG-BZ2.	
<a href="#"><u>EA-MG-DC-CON</u></a>	<b>C-more</b> Micro DC 3-terminal power connector, replacement. Package of 5. For use with all <b>C-more</b> Micro 4in, 6in, 8in and 10in panels, and power adapters EA-MG-P1 and EA-MG-SP1.	
<a href="#"><u>EA-MG4-FKL</u></a>	<b>C-more</b> Micro function key label insert, replacement. Package of 4. For use with <b>C-more</b> Micro EA1-T4CL 4in HMIs. (3) blank label inserts and (1) landscape F1-F5 label insert included.	

**Panel Mounting Clips**  
Part No. [EA-MG-BZ2-BRK](#)



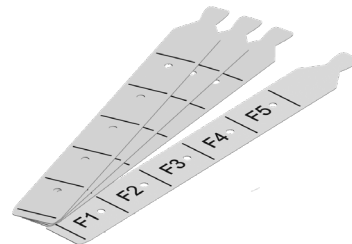
(pk of 8)

**DC Power Connector**  
Part No. [EA-MG-DC-CON](#)



(pk of 5)

**Function Keys Label Inserts**  
Part No. [EA-MG4-FKL](#)



(pk of 4; 3 blank, 1 F1-F5 for landscape)