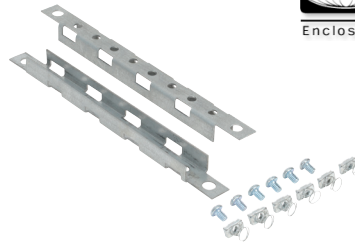


Enclosure Accessories - Channel, Grid Straps, and DIN Rail Mounting



HFWMC12C



HFWGS12C

Mounting Channel

Mounting Channels can be used when installing DIN rails, grid straps, and rack mounting angles in Ultimate Series NEMA 412 enclosures. Channels can be mounted both vertically or horizontally to collar studs, or they may be mounted to Adjustable Depth Mounting Kits. Each kit includes two channels with white polyester powder finish.

Grid Straps

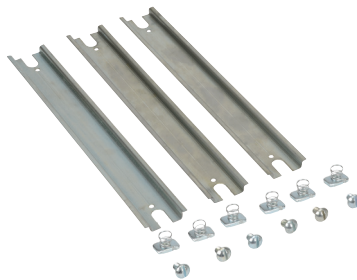
Grid straps are used when a flexible means of installing components in Ultimate Series NEMA 412 enclosures is required. Straps are available in single or three hole widths. Straps can be mounted both vertically or horizontally to collar studs, or they may be mounted to Adjustable Depth Mounting Kits. Each kit contains two straps and mounting hardware. Fasteners for attaching equipment to the grid straps [HFWGSHC] must be ordered separately.

| Mounting Channels | Price | For Enclosure Parallel Dimension in (mm) | Wt. [lb] |
|-------------------|----------|--|----------|
| HFWMC12C | \$54.00 | 12 [304] | 1 |
| HFWMC16C | \$60.00 | 16 [406] | |
| HFWMC20C | \$67.00 | 20 [508] | |
| HFWMC24C | \$73.00 | 24 [609] | |
| HFWMC30C | \$83.00 | 30 [762] | |
| HFWMC36C | \$93.00 | 36 [914] | 2 |
| HFWMC42C | \$103.00 | 42 [1066] | 3 |
| HFWMC48C | \$113.00 | 48 [1219] | |
| HFWMC60C | \$132.00 | 60 [1524] | |

| Grid Straps | Price | For Enclosure Parallel Dimension in (mm) | Wt. [lb] |
|-----------------|---------|--|----------|
| HFWGS12C | \$42.00 | 12 [304] | 1 |
| HFWGS16C | \$45.00 | 16 [406] | |
| HFWGS20C | \$48.50 | 20 [508] | 2 |
| HFWGS24C | \$52.00 | 24 [609] | |
| HFWGS30C | \$56.00 | 30 [762] | 3 |
| HFWGS36C | \$79.00 | 36 [914] | 5 |
| HFWGS42C | \$85.00 | 42 [1066] | 6 |
| HFWGS48C | \$92.00 | 48 [1219] | 7 |
| HFWGS60C | \$99.00 | 60 [1524] | 9 |

DIN Rail Kit

DIN rails supply mounting surfaces for DIN mount snap-on devices. Rails can be mounted both vertically or horizontally to collar studs in Ultimate Series NEMA 412 enclosures, or they may be mounted to Adjustable Depth Mounting Kits. Kit includes three rails with painted finish and mounting hardware.



HFWDR12C

| DIN Rail Kit | Price | For Enclosure Parallel Dimension in (mm) | Wt. [lb] |
|-----------------|---------|--|----------|
| HFWDR12C | \$69.00 | 12 [304] | 1 |
| HFWDR16C | \$77.00 | 16 [406] | |
| HFWDR20C | \$87.00 | 20 [508] | 2 |
| HFWDR24C | \$96.00 | 24 [609] | 0.1 |

Enclosure Shipping Schedule

1 -10 days

Color indicates shipping lead time in business days.

See our website: www.AutomationDirect.com for complete engineering drawings.