

Ethernet Patch Cables

Cat5e STP Ethernet Patch Cables

Connectivity

Ethernet is a networking technology that includes the protocol, port, cable, and computer chip needed to interconnect intelligent devices on to a local area network.

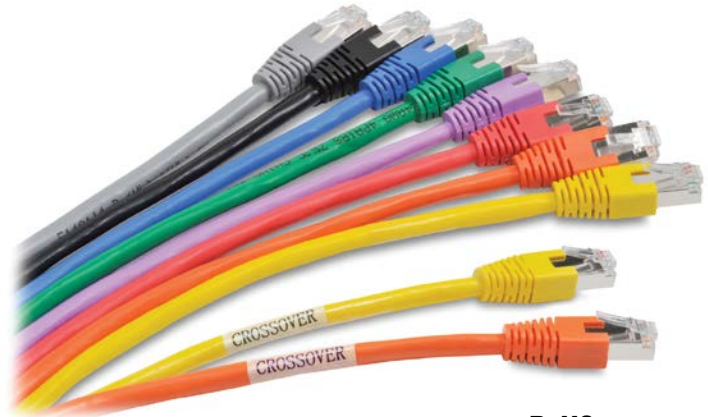
Designed for Industrial Use

The noise interference radiated from electrical components that is often associated with factory floor environments can result in partial or complete data loss. This may result in delays or complete communication loss in extremely noisy environments.

Our Ethernet patch cables are designed to reduce the effects of (EMI) electromagnetic interference by incorporating a single metal foil shield that wraps around the entire set of 8 wires in the Cat5e cable. The RJ45 connectors are also shielded against electrical interference and designed to be robust. Our 350 MHz cables exceed all Cat5e TIA/EIA standards, and drastically reduce both impedance and structural return loss (SRL) when compared to standard 100 MHz cables.

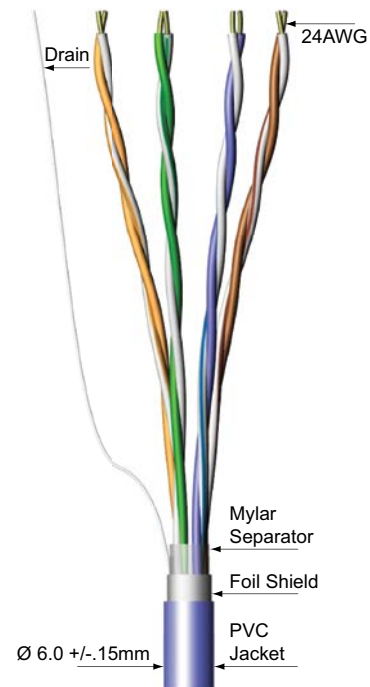
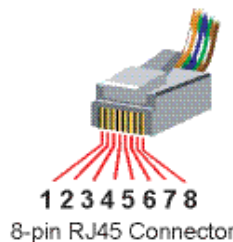
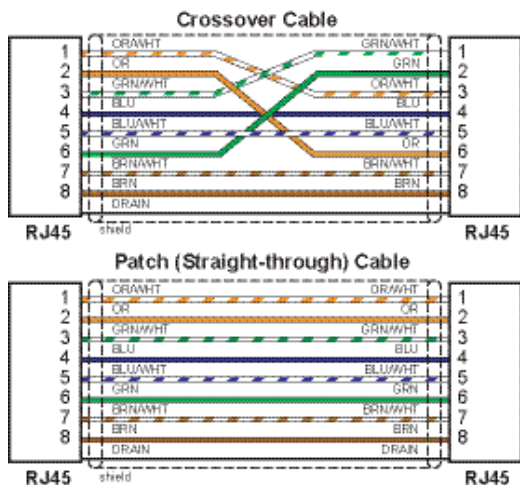
The cables comply with the PoE+ standard to deliver an enhanced 30W of power.

With several colors and lengths to choose from at great pricing, these cables should help you in creating solid, reliable Ethernet networks with any application.



Features

- Connector; 50-micron gold plated RJ45 male plugs
- Conductor; 4-pair 24 AWG stranded copper
- Overall foil shielded cable for industrial applications
- Crossover cables have "crossover" label on each end.
- Exceeds Category 5e specifications, 350MHz
- 30W Power over Ethernet (PoE+)
- Multiple lengths and colors
- CM rated, suitable for general use other than plenum spaces
- RoHS compliant



Ethernet Patch Cables

Cat 5e Straight Through Patch Cables				
Part Number	Color	Description	Length	Price
<u>C5E-STPBK-S3</u>	Black	AutomationDirect Cat5e Ethernet straight-through patch cable, STP (overall foil shield), RJ45 male to RJ45 male. For use with 10/100/1000 Mbps networks. Exceeds Category 5e cable specifications.	3' [0.91 m]	
<u>C5E-STPBL-S3</u>	Blue			
<u>C5E-STPGN-S3</u>	Green			
<u>C5E-STPGY-S3</u>	Gray			
<u>C5E-STPOR-S3</u>	Orange			
<u>C5E-STPPL-S3</u>	Purple			
<u>C5E-STPRD-S3</u>	Red			
<u>C5E-STPYL-S3</u>	Yellow			
<u>C5E-STPBK-S7</u>	Black	AutomationDirect Cat5e Ethernet straight-through patch cable, STP (overall foil shield), RJ45 male to RJ45 male. For use with 10/100/1000 Mbps networks. Exceeds Category 5e cable specifications.	7' [2.13 m]	
<u>C5E-STPBL-S7</u>	Blue			
<u>C5E-STPGN-S7</u>	Green			
<u>C5E-STPGY-S7</u>	Gray			
<u>C5E-STPOR-S7</u>	Orange			
<u>C5E-STPPL-S7</u>	Purple			
<u>C5E-STPRD-S7</u>	Red			
<u>C5E-STPYL-S7</u>	Yellow			
<u>C5E-STPBK-S10</u>	Black	AutomationDirect Cat5e Ethernet straight-through patch cable, STP (overall foil shield), RJ45 male to RJ45 male. For use with 10/100/1000 Mbps networks. Exceeds Category 5e cable specifications.	10' [3.05 m]	
<u>C5E-STPBL-S10</u>	Blue			
<u>C5E-STPGN-S10</u>	Green			
<u>C5E-STPGY-S10</u>	Gray			
<u>C5E-STPOR-S10</u>	Orange			
<u>C5E-STPPL-S10</u>	Purple			
<u>C5E-STPRD-S10</u>	Red			
<u>C5E-STPYL-S10</u>	Yellow			
<u>C5E-STPBK-S14</u>	Black	AutomationDirect Cat5e Ethernet straight-through patch cable, STP (overall foil shield), RJ45 male to RJ45 male. For use with 10/100/1000 Mbps networks. Exceeds Category 5e cable specifications.	14' [4.3 m]	
<u>C5E-STPBL-S14</u>	Blue			
<u>C5E-STPGN-S14</u>	Green			
<u>C5E-STPGY-S14</u>	Gray			
<u>C5E-STPPL-S14</u>	Purple			
<u>C5E-STPRD-S14</u>	Red			
<u>C5E-STPYL-S14</u>	Yellow			
<u>C5E-STPBK-S25</u>	Black			AutomationDirect Cat5e Ethernet straight-through patch cable, STP (overall foil shield), RJ45 male to RJ45 male. For use with 10/100/1000 Mbps networks. Exceeds Category 5e cable specifications.
<u>C5E-STPBL-S25</u>	Blue			
<u>C5E-STPGN-S25</u>	Green			
<u>C5E-STPGY-S25</u>	Gray			
<u>C5E-STPOR-S25</u>	Orange			
<u>C5E-STPRD-S25</u>	Red			
<u>C5E-STPYL-S25</u>	Yellow			
<u>C5E-STPBK-S50</u>	Black	AutomationDirect Cat5e Ethernet straight-through patch cable, STP (overall foil shield), RJ45 male to RJ45 male. For use with 10/100/1000 Mbps networks. Exceeds Category 5e cable specifications.	50' [15.2 m]	
<u>C5E-STPBL-S50</u>	Blue			
<u>C5E-STPGN-S50</u>	Green			
<u>C5E-STPGY-S50</u>	Gray			
<u>C5E-STPOR-S50</u>	Orange			
<u>C5E-STPPL-S50</u>	Purple			
<u>C5E-STPRD-S50</u>	Red			
<u>C5E-STPYL-S50</u>	Yellow			

Ethernet Patch Cables

Cat5e Crossover Patch Cables				
Part Number	Color	Description	Length	Price
C5E-STPOR-C3	Orange	AutomationDirect Cat5e Ethernet crossover patch cable, STP (overall foil shield), RJ45 male to RJ45 male. For use with 10/100/1000 Mbps networks. Labeled as CROSSOVER on both ends. Exceeds Category 5e cable specifications.	3' [0.91 m]	
C5E-STPYL-C3	Yellow			
C5E-STPOR-C7	Orange		7' [2.13 m]	
C5E-STPYL-C7	Yellow			
C5E-STPOR-C10	Orange		10' [3.05 m]	
C5E-STPYL-C10	Yellow			
C5E-STPOR-C14	Orange		14' [4.3 m]	
C5E-STPYL-C14	Yellow			
C5E-STPOR-C25	Orange		25' [7.6 m]	
C5E-STPYL-C25	Yellow			
C5E-STPOR-C50	Orange		50' [15.2 m]	
C5E-STPYL-C50	Yellow			

Cat5e Cable Specifications	
Transfer Parameters	Cat5e
Transfer Rate	Up to 1 Gbit/s full duplex
Temperature Range	Bare cable temperature rating is 75°C
Protection Degree	RJ45 connector: IP20
Outer Diameter	6.0 mm ±0.2 mm
Bend Radius	60mm (10 x outer diameter)
Connection	Shielded RJ45 plug
Wire Material	Stranded copper
Approvals	Bare cable is cULus Recognized (file number E132276)

