



Control Distribution Blocks for AVS Series Solenoid Valves



NITRA pneumatic control distribution blocks are a convenient way to connect a bank of valves to a controller. Replace all the wiring connectors supplied with the solenoid valves with this distribution block, and replace a bundle of solenoid cables with one DB15 cable. Each block matches up with a manifold of two to eight stations and includes built-in surge suppression and LED indication.

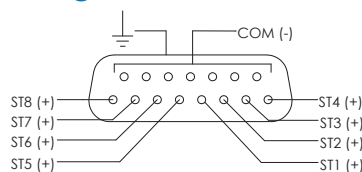
Features

- Single DB15 wiring connection
- Built-in surge suppression
- LED indication
- IP 65 rating
- 2 to 8 stations
- Use AVPS1-BP or AVPS2-BP plugs for any unused stations
- Mounting hardware and gaskets included
- Made in USA

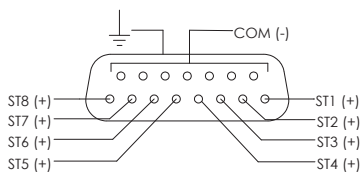


| Control Distribution Block Technical Specifications | | |
|---|--|------------|
| Specification | VDC Units | VAC Units |
| Voltage Range | 12-24 VDC | 24-120 VAC |
| Temperature Range | 0°F to 120°F (-20°C to 49°C) | |
| Max. Coil Power | 4W | 4VA |
| Electrical Connection | 15-Pin D-Sub (DB15) Male | |
| Circuit Protection | N4004 Diode | MOV |
| Enclosure Rating | IP 65 | |
| LED Indicator | Yes | |
| Material | ABS (Acrylonitrile butadiene styrene) Body | |

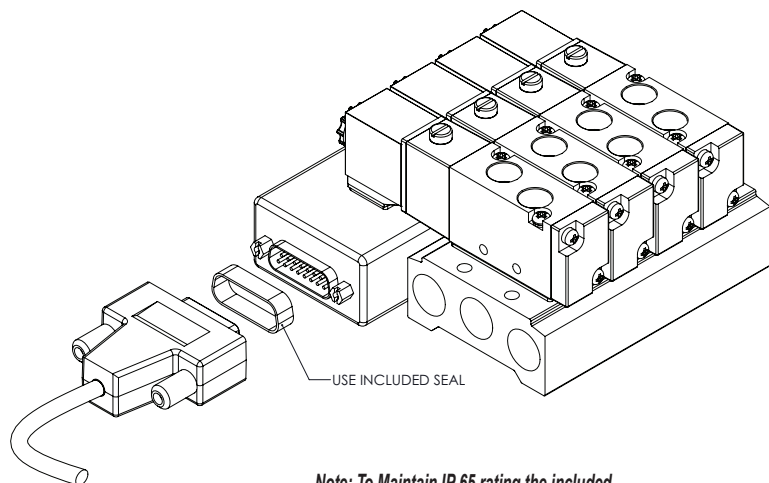
Wiring



Control Distribution Block Pinout
AVPS1 Series Distribution Blocks



Control Distribution Block Pinout
AVPS2 / 3 / 4 Series Distribution Blocks



Note: To Maintain IP 65 rating the included DB15 Connector Seal must be used.



AVS-31 and AVS-51 Series Control Distribution Blocks



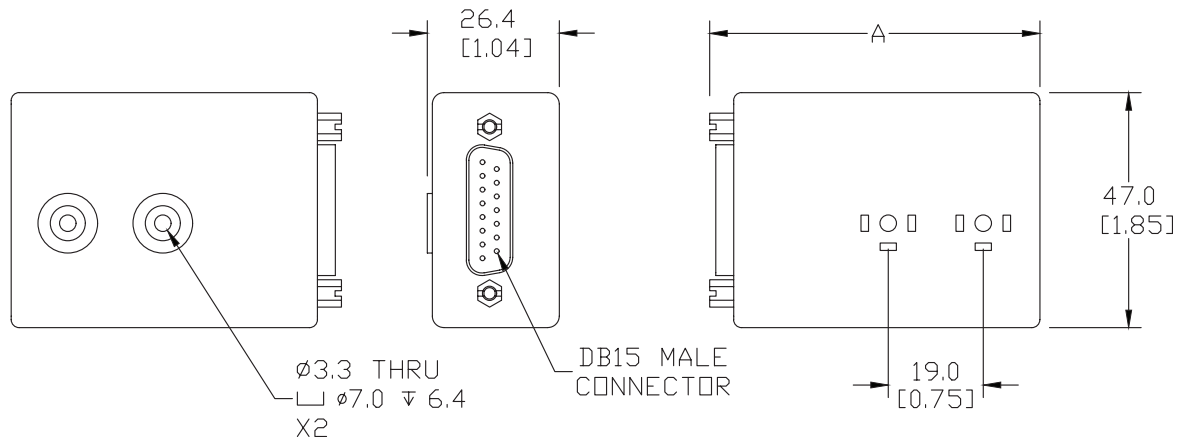
Part No. AVPS1-6A

| AVS-31 and AVS-51 Series Control Distribution Blocks | | | | | |
|--|---------|----------|-----------------------|-------|--------------|
| Part No. | Voltage | Stations | Dimension "A" in [mm] | Price | Weight (lbs) |
| <u>AVPS1-2A</u> | AC | 2 | 2.60 [66.0] | | 0.2 |
| <u>AVPS1-2D</u> | DC | | | | 0.2 |
| <u>AVPS1-4A</u> | AC | 4 | 4.09 [104.0] | | 0.3 |
| <u>AVPS1-4D</u> | DC | | | | 0.3 |
| <u>AVPS1-6A</u> | AC | 6 | 5.59 [142.0] | | 0.3 |
| <u>AVPS1-6D</u> | DC | | | | 0.3 |
| <u>AVPS1-8A</u> | AC | 8 | 7.09 [180.0] | | 0.4 |
| <u>AVPS1-8D</u> | DC | | | | 0.4 |

Dimensions

mm [inches]

AVPS1-XX Series



See our website www.AutomationDirect.com for complete Engineering drawings.



AVS-32 and AVS-52 Series Control Distribution Blocks



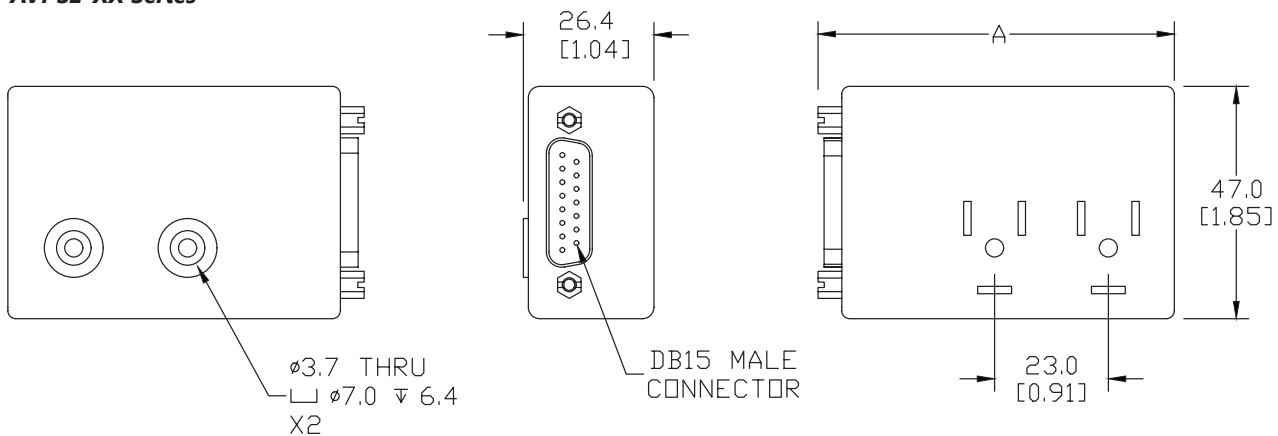
Part No. [AVPS2-6A](#)

| AVS-32 and AVS-52 Series Control Distribution Blocks | | | | | |
|--|---------|----------|-----------------------|-------|--------------|
| Part No. | Voltage | Stations | Dimension "A" in [mm] | Price | Weight (lbs) |
| AVPS2-2A | AC | 2 | 2.84 [72.1] | | 0.2 |
| AVPS2-2D | DC | | | | 0.2 |
| AVPS2-4A | AC | 4 | 4.65 [118.1] | | 0.3 |
| AVPS2-4D | DC | | | | 0.3 |
| AVPS2-6A | AC | 6 | 6.46 [164.1] | | 0.3 |
| AVPS2-6D | DC | | | | 0.3 |
| AVPS2-8D | DC | 8 | 8.27 [210.1] | | 0.4 |

Dimensions

mm [inches]

AVPS2-XX Series



See our website www.AutomationDirect.com for complete Engineering drawings.



AVS-33 and AVS-53 Series Control Distribution Blocks

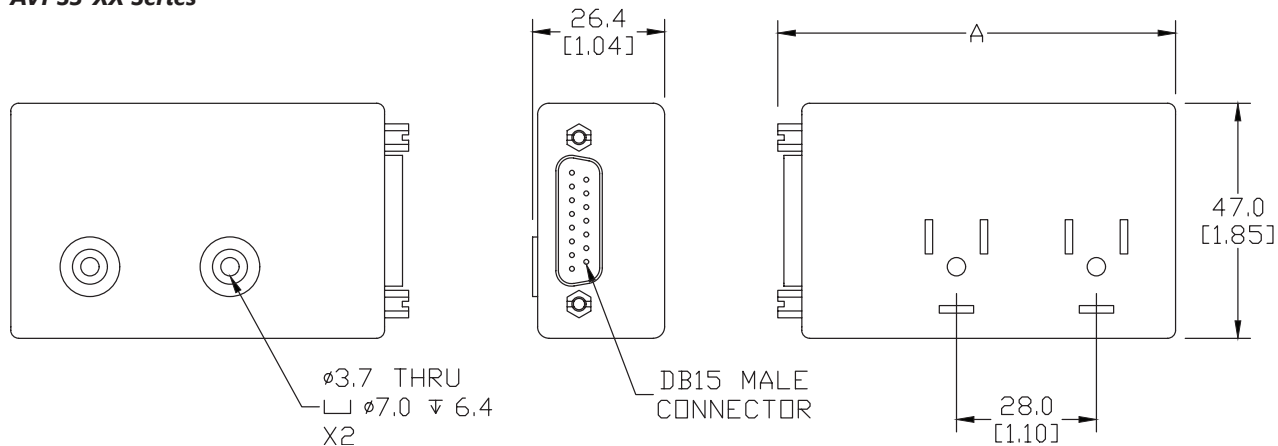


| AVS-33 and AVS-53 Series Control Distribution Blocks | | | | | |
|--|---------|----------|-----------------------|-------|--------------|
| Part No. | Voltage | Stations | Dimension "A" in [mm] | Price | Weight (lbs) |
| AVPS3-2A | AC | 2 | 3.13 [79.5] | | 0.2 |
| AVPS3-2D | DC | | | | 0.2 |
| AVPS3-4A | AC | 4 | 5.33 [135.5] | | 0.3 |
| AVPS3-4D | DC | | | | 0.3 |
| AVPS3-6D | DC | 6 | 7.54 [191.5] | | 0.3 |
| AVPS3-8A | AC | 8 | 9.74 [247.5] | | 0.4 |
| AVPS3-8D | DC | | | | 0.4 |

Dimensions

mm [inches]

AVPS3-XX Series



See our website www.AutomationDirect.com for complete Engineering drawings.



AVS-54 Series Control Distribution Blocks



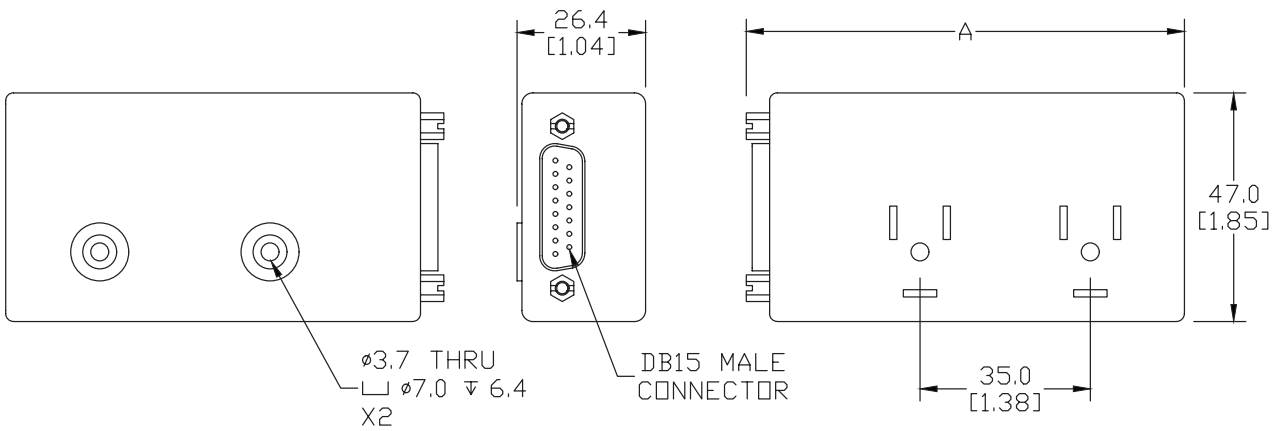
Part No. [AVPS4-6A](#)

| AVS-54 Series Control Distribution Blocks | | | | | |
|---|---------|----------|-----------------------|-------|--------------|
| Part No. | Voltage | Stations | Dimension "A" in [mm] | Price | Weight (lbs) |
| AVPS4-2A | AC | 2 | 3.54 [90.0] | | 0.2 |
| AVPS4-2D | DC | | | | 0.2 |
| AVPS4-4A | AC | 4 | 6.30 [160.0] | | 0.3 |
| AVPS4-4D | DC | | | | 0.3 |
| AVPS4-6A | AC | 6 | 9.06 [230.0] | | 0.3 |
| AVPS4-6D | DC | | | | 0.3 |
| AVPS4-8A | AC | 8 | 11.81 [300.0] | | 0.4 |
| AVPS4-8D | DC | | | | 0.4 |

Dimensions

mm [inches]

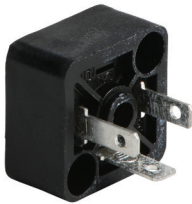
AVPS4-XX Series



See our website www.AutomationDirect.com for complete Engineering drawings.



AVPS Series Control Distribution Blocks Accessories



Part No. [AVPS1-BP](#)



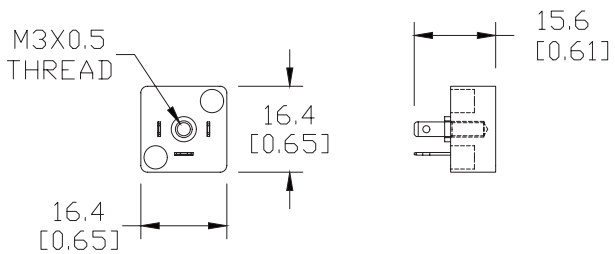
Part No. [AVPS2-BP](#)

| AVPS Series Control Distribution Blocks Accessories | | | |
|---|---|-------|--------------|
| Part No. | Description | Price | Weight (lbs) |
| AVPS1-BP | NITRA blanking plug, for use with AVPS1-x control distribution blocks. | | 0.2 |
| AVPS2-BP | NITRA blanking plug, for use with AVPS2-x, AVPS3-x and AVPS4-x control distribution blocks. | | 0.3 |

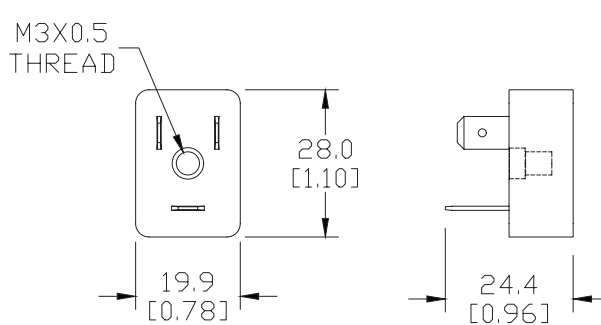
Dimensions

mm [inches]

AVPS1-BP



AVPS2-BP



See our website www.AutomationDirect.com for complete Engineering drawings.