

MachoBox Series – Fiberglass Enclosures – Extra Deep

Extra-Deep Single-Door with Padlocking Twist-Lock Latches



M10088SSH



Construction

- Hot compression molded fiberglass reinforced polyester (thermoset)
- Poured polyurethane seamless gasket provides watertight, dust-tight environmental seal
- 304 stainless steel used on all external hardware
- Rounded edges, minimal protrusions or exposed pocket area for accumulation of dust or debris
- Molded-in flange for easy mounting
- Raised bosses with brass inserts accepting #10-32 screws for optional panel mounting
- Panel mounting points inside the door correspond to rear subpanel size
- Workable material cuts, drills, punches and saws with ease and accuracy
- Clamshell-style cover
- Full length, stainless steel, hinged door with padlockable twist-lock latches
- Full 180° door opening
- Non-conductive, UV-resistant
- 216 lb-in impact resistance per UL746C
- Smooth surface, no color variations, swirls or color pockets, no voids
- Color: Gray

Listings

- UL/cUL File E64358
- NEMA Ratings 1, 3, 4X, and 12 [UL508A, UL50 and UL50e]
- IEC 60529 Ratings IP66 per UL File E362920
- UL 1741 File E333478
- CSA Std. C22.2 1, 3, 4X, and 12 per CSA File LR069014
- Temperature Range (-76°F to +274°F) (-60°C to +134°C)
- Flammability Rating UL94-5V
- NFPA No. 101 Flame Spread Class A (1)
- Impact Rating IK10

Certifications

- cULus, IEC, REACH, RoHS
- Outdoor UV Exposure (UL 746C) (f1) Rated



Shipping Schedule

Same day	1 - 5 days	1 - 7 days	1 - 15 days	1 - 20 days
----------	------------	------------	-------------	-------------

Color indicates shipping lead time in business days.

MachoBox Series – Fiberglass Enclosures – Extra-Deep Single-Door with Padlocking Twist-Lock Latches

Part Number	Price	Enclosure Overall Size (HxWxD)	Wt.	No. Latches	Carbon Steel Subpanel	Fiberglass Subpanel	Aluminum Subpanel	Drawing Link
M8068SSH	<--->	9.63 x 6.85 x 9.06 [245 x 174 x 230]	4.5 [2.0]	1	BP86CS	BP86FG	BP86A	PDF
M8088SSH	<--->	9.56 x 8.84 x 9.44 [243 x 225 x 240]	4.8 [2.2]	1	BP88CS	—	—	PDF
M10088SSH	<--->	11.63 x 8.84 x 8.09 [295 x 225 x 205]	10.4 [4.7]	1	BP108CS	BP108FG	BP108A	PDF
M121010SSH	<--->	13.56 x 10.93 x 10.06 [344 x 278 x 256]	7.5 [3.4]	1	BP1210CS	BP1210FG	BP1210A	PDF
M141212SSH	<--->	15.50 x 12.83 x 12.06 [394 x 326 x 306]	11.3 [5.1]	2	BP1412CS	BP1412FG	BP1412A	PDF
M161412SSH	<--->	17.53 x 14.94 x 12.07 [445 x 379 x 307]	15.0 [6.8]	2	BP1614CS	BP1614FG	BP1614A	PDF
M181617SSH	<--->	19.63 x 16.92 x 17.19 [499 x 430 x 437]	21.6 [9.8]	2	BP1816CS	BP1816FG	BP1816A	PDF
M201617SSH	Retired	22.00 x 17.00 x 17.21 [559 x 432 x 437]	23.3 [10.6]	2	BPM2016CS	—	BPM2016A	PDF

Notes: Subpanels must be ordered separately.

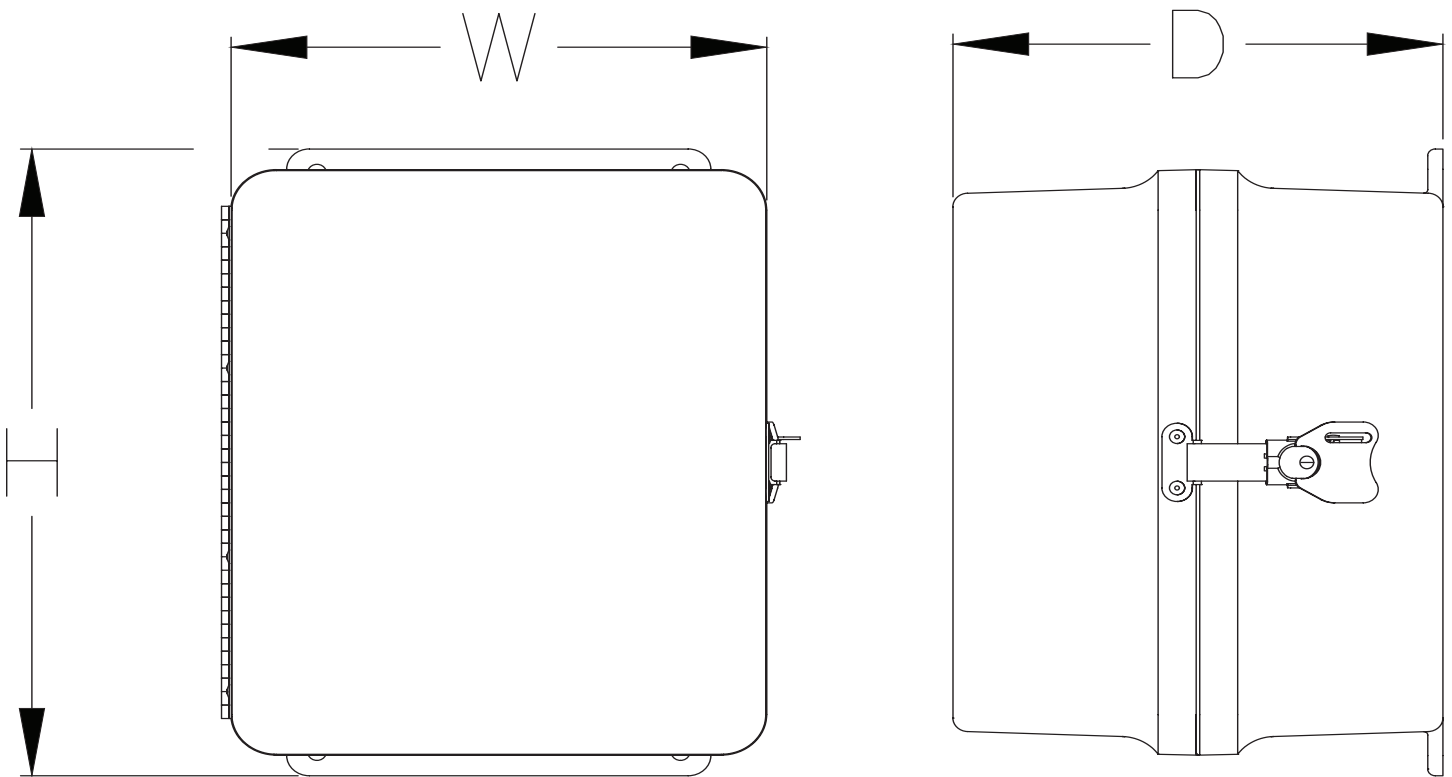
Dimensions in inches [millimeters].

Weight in pounds [kilograms].

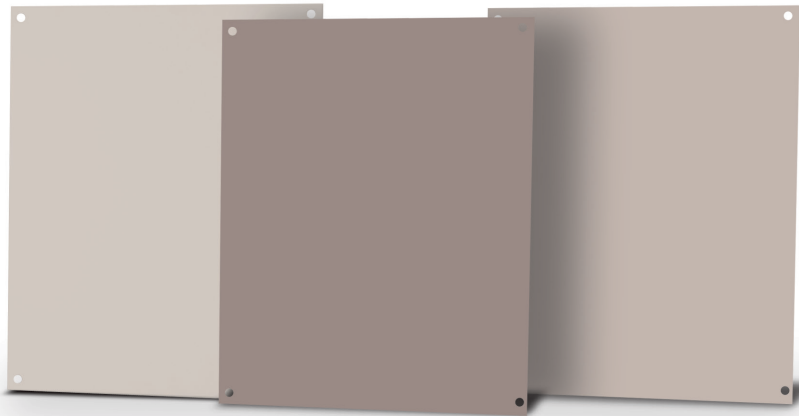
MachoBox Series – Fiberglass Enclosures – Extra Deep



Dimensions



Subpanels for Freedom, MachoBox and Centurion Series Fiberglass Enclosures



Carbon steel subpanels

- Material: Carbon steel
- Finish: White polyester powder finish

Fiberglass subpanels

- Material: Fiberglass reinforced polyester (FRP)
- Color: Gray

Part Number	Price	Subpanel Size HxWxD	Enclosure Nominal Size HxW	Wt(lb)
BP64CS	<--->	4.88 x 2.88 x 0.075 [124 x 73 x 1.9]	6 x 4	0.3
BP66CS	<--->	4.88 x 4.88 x 0.075 [124 x 124 x 1.9]	6 x 6	0.5
BP76CS	Retired	6.00 x 4.88 x 0.075 [152 x 124 x 1.9]	7 x 6	0.6
BP86CS	<--->	6.75 x 4.88 x 0.075 [152 x 124 x 1.9]	8 x 6	0.8
BP88CS	<--->	6.88 x 6.88 x 0.075 [175 x 175 x 1.9]	8 x 8	0.8
BP96CS	Retired	8.25 x 4.88 x 0.075 [175 x 124 x 1.9]	9 x 6	0.9
BP108CS	<--->	8.75 x 6.88 x 0.075 [225 x 175 x 1.9]	10 x 8	1.3
BP1210CS	<--->	10.88 x 8.75 x 0.075 [276 x 225 x 1.9]	12 x 10	2.1
BP1412CS	<--->	12.88 x 10.88 x 0.075 [327 x 276 x 1.9]	14 x 12	3.0
BP1614CS	<--->	14.88 x 12.88 x 0.075 [378 x 327 x 1.9]	16 x 14	4.1
BP1816CS	<--->	16.88 x 14.88 x 0.075 [429 x 378 x 1.9]	18 x 16	5.4
BPM2016CS	<--->	18.88 x 14.88 x 0.075 [479 x 378 x 1.9]	20 x 16	6.1
BPM2020CS	<--->	18.00 x 18.00 x 0.105 [457 x 457 x 2.7]	20 x 20	9.4
BPM2420CS	<--->	22.00 x 18.00 x 0.105 [558 x 457 x 2.7]	24 x 20	11
BPM2424CS	<--->	22.00 x 22.00 x 0.105 [558 x 558 x 2.7]	24 x 24	22

Note: Dimensions in inches [millimeters].

Part Number	Price	Subpanel Size HxWxD	Enclosure Nominal Size HxW	Wt.(lb)
BP64FG	Retired	4.88 x 2.88 x 0.13 [124 x 73 x 3.2]	6 x 4	0.1
BP66FG	Retired	4.88 x 4.88 x 0.13 [124 x 124 x 3.2]	6 x 6	0.2
BP86FG	Retired	6.88 x 4.88 x 0.13 [175 x 124 x 3.2]	8 x 6	0.3
BP88FG	Retired	6.88 x 6.88 x 0.13 [175 x 175 x 3.2]	8 x 8	0.3
BP108FG	<--->	8.88 x 6.88 x 0.13 [225 x 175 x 3.2]	10 x 8	0.5
BP1210FG	<--->	10.88 x 8.88 x 0.13 [276 x 225 x 3.2]	12 x 10	0.9
BP1412FG	<--->	12.88 x 10.88 x 0.13 [327 x 276 x 3.2]	14 x 12	1.0
BP1614FG	<--->	14.88 x 12.88 x 0.13 [378 x 327 x 3.2]	16 x 14	0.8
BP1816FG	<--->	16.88 x 14.88 x 0.13 [429 x 378 x 3.2]	18 x 16	2.0
BPM2016FG	Retired	18.88 x 14.88 x 0.13 [479 x 378 x 3.2]	20 x 16	2.2
BPM2020FG	Retired	18.00 x 18.00 x 0.13 [457 x 457 x 3.2]	20 x 20	2.3
BPM2420FG	Retired	22.00 x 18.00 x 0.13 [558 x 457 x 3.2]	24 x 20	2.8
BPM2424FG	Retired	22.00 x 22.00 x 0.13 [558 x 558 x 3.2]	24 x 24	3.5

Note: Dimensions in inches [millimeters].

Subpanels for Freedom, MachoBox and Centurion Series Fiberglass Enclosures

Shipping Schedule

Same day 1 - 5 days 1 - 7 days 1 - 15 days 1 - 20 days

Color indicates shipping lead time in business days.



AttaBox
A ROBROY ENCLOSURES™ BRAND

Aluminum subpanels

- Material: 3003H14 aluminum
- Finish: Mill

Part Number	Price	Subpanel Size HxWxD	Enclosure Nominal Size HxW	Wt. (lb)
BP64A	<--->	4.88 x 2.88 x 0.081 [124 x 73 x 2.0]	6 x 4	0.1
BP66A	<--->	4.88 x 4.88 x 0.081 [124 x 124 x 2.0]	6 x 6	0.2
BP86A	<--->	6.88 x 4.88 x 0.081 [175 x 124 x 2.0]	8 x 6	0.3
BP108A	<--->	8.88 x 6.88 x 0.081 [225 x 175 x 2.0]	10 x 8	0.5
BP1010A	<--->	8.88 x 8.88 x 0.081 [225 x 225 x 2.0]	10 x 10	4.3
BP1210A	<--->	10.88 x 8.88 x 0.081 [276 x 225 x 2.0]	12 x 10	0.8
BP1412A	<--->	12.88 x 10.88 x 0.081 [327 x 276 x 2.0]	14 x 12	1.1
BP1614A	<--->	14.88 x 12.88 x 0.081 [378 x 327 x 2.0]	16 x 14	1.5
BP1816A	<--->	16.88 x 14.88 x 0.081 [429 x 378 x 2.0]	18 x 16	2.5
BPM2016A	<--->	18.88 x 14.88 x 0.081 [479 x 378 x 2.0]	20 x 16	2.4
BPM2020A	<--->	18.00 x 18.00 x 0.129 [457 x 457 x 3.3]	20 x 20	3.7
BPM2420A	<--->	22.00 x 18.00 x 0.129 [558 x 457 x 3.3]	24 x 20	4.5
BPM2424A	<--->	22.00 x 22.00 x 0.129 [558 x 558 x 3.3]	24 x 24	5.4
BPM3024A	<--->	27.00 x 21.00 x 0.129 [686 x 533 x 3.3]	30 x 24	7.0



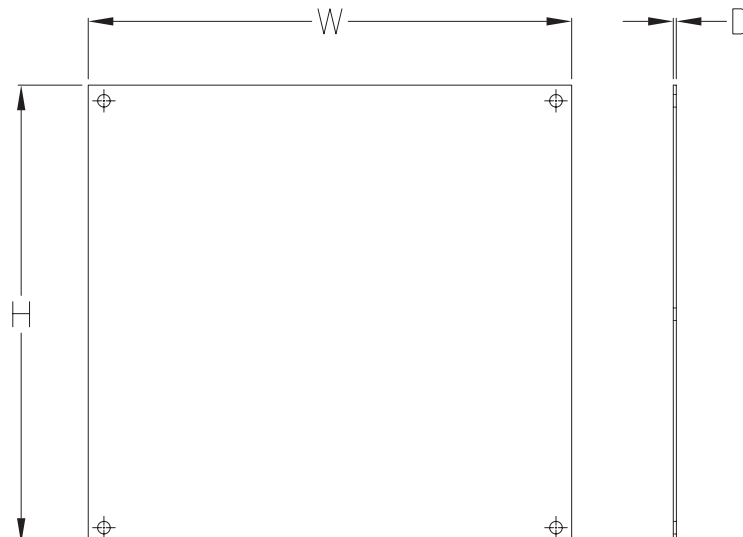
Note: Dimensions in inches (millimeters).

Aluminum swing-out panel

- Swing-out panel with 8 swing-panel mounts
- Works with 30 x 24 in [762 x 610 mm] and 24 x 30 in [610 x 762 mm] MachoBox series enclosures

Part Number	Price	Panel Size HxWxD	Enclosure Nominal Size HxW	Wt. (lb)
M3024SPK	Retired	27.00 x 21.00 X 0.129 [686 X 533 X 3.3]	30 x 24	11

Dimensions



Enclosure Accessories – Hole Seals and Plugs



Hole Plugs for Non-Metal Enclosures

Designed to seal extra pushbutton holes, conduit openings, and knockout openings in AttaBox fiberglass enclosures from dirt, dust, oil, and water. Conduit hole sizes are nominal trade sizes, not actual hole sizes. (Example: 1 in [25 mm] conduit actual diameter = 1.315 in [33.4 mm]).

Shipping Schedule				
Same day	1 - 5 days	1 - 7 days	1 - 15 days	1 - 20 days
Color indicates shipping lead time in business days.				



REHPSERIES1



REHPSERIES3



Hole Plugs for Non-Metal Enclosures				
Hole Plugs	Price	Description	Nominal Hole Diameter Range	Wt [oz]
REHPSERIES1	<--->	Fiberglass-reinforced polyester (FRP), closed-cell neoprene gasket, for 1/2 to 3/4-inch hole.	0.50 - 0.81 [12.7 - 20.6]	2
REHPSERIES1.5	<--->	Fiberglass-reinforced polyester (FRP), closed-cell neoprene gasket. For use with 1/2in conduit holes.	0.88 [22.4]	2
REHPSERIES2	<--->	Fiberglass-reinforced polyester (FRP), closed-cell neoprene gasket, for 1/2- to 3/4-inch conduit holes and 22 or 30mm [1.18 in] pushbutton holes.	0.88 - 1.28 [22.4 - 32.5]	2
REHPSERIES3	<--->	Fiberglass-reinforced polyester (FRP), closed-cell neoprene gasket, for 1 to 1-1/4 inch conduit holes.	1.38 - 1.75 [35.1 - 44.5]	2
REHPSERIES4	<--->	Fiberglass-reinforced polyester (FRP), closed-cell neoprene gasket, for 1-1/2 to 2-inch conduit holes.	2.00 - 2.56 [50.1 - 65.0]	2
REHPSERIES5	Retired	Fiberglass-reinforced polyester (FRP), closed-cell neoprene gasket. For use with 2-1/2in conduit holes.	3.00 [76.2]	2
REHPSERIES6	Retired	Fiberglass-reinforced polyester (FRP), closed-cell neoprene gasket. For use with 3in conduit holes.	3.62 [92.0]	2
REHPSERIES7	Retired	Fiberglass-reinforced polyester (FRP), closed-cell neoprene gasket. For use with 3-1/2in conduit holes.	4.12 [104.7]	2
REHPSERIES8	Retired	Fiberglass-reinforced polyester (FRP), closed-cell neoprene gasket. For use with 4in conduit holes.	4.62 [117.4]	2

Note: Dimensions in inches [millimeters].

Agency Approvals

- Fiberglass hole plug for UL 1, 3R, 4, 4X, 6, 6P, 12 Industrial control panel enclosures. [UL File E64358]
- CSA 1, 12, 3, 3R, 4, 4X, 6, 6P:IEC Code IP66, IP67, IP68[CSA File LR069014]



Vents and Louvers for Non-Metallic Enclosures



Drain/Breather Vents



REDVK3KIT



REBV4XKIT

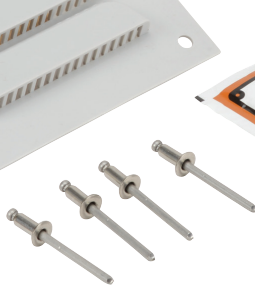
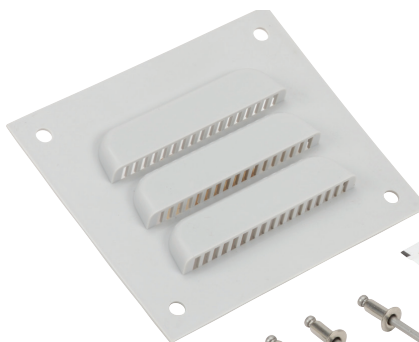


REDV4KIT

Shipping Schedule				
Same day	1 - 5 days	1 - 7 days	1 - 15 days	1 - 20 days
Color indicates shipping lead time in business days.				

Part Number	Price	Description	Wt.[oz]
<u>REDV1PVC</u>	<--->	AttaBox single drain vent, PVC. For use on non-metallic enclosures. Includes drain vent and silicone adhesive/sealant.	2
<u>REDVK3KIT</u>	<--->	AttaBox single drain vent kit, PVC. Includes drain vent and silicone adhesive/sealant.	2
<u>REBV4XKIT</u>	<--->	AttaBox single breather vent kit allows enclosure to "breathe" while maintaining UL Type 4X enclosure rating.	4.8
<u>REDV4XKIT</u>	<--->	AttaBox single drain vent kit properly drains unwanted moisture while maintaining ULType 4X enclosure rating.	3.2

Louver Vent



RELPK3KIT

Part Number	Price	Description	Wt.[oz]
<u>RELP1</u>	<--->	Louver vent, for ventilation in non-metallic enclosure, polypropylene, 4.5 inch wide x 4.0 inch high. For 3 inch x 3 inch cutout.	2
<u>RELPK3KIT</u>	<--->	Louver vent kit, for ventilation in non-metallic enclosure. Includes 4.5 inch wide x 4.0 inch high polypropylene louver vent, rivets and silicone adhesive/sealant. For 3 inch x 3 inch cutout.	2