

# MachoBox Series – Fiberglass Enclosures

## Screw Cover



**AttaBox**  
A ROBROY ENCLOSURES™ BRAND



*M1008WA Crowned Cover Model Shown*

## Construction

- Hot compression molded fiberglass reinforced polyester (thermoset)
- Poured polyurethane seamless gasket provides watertight, dust-tight environmental seal
- 304 stainless used on all external hardware
- Rounded edges, minimal protrusions or exposed pocket area for accumulation of dust or debris
- Molded in flange for easy mounting
- Raised bosses with brass inserts accepting #10-32 screws for optional panel mounting
- Stainless steel beaded cover retention chain
- Workable material cuts, drills, punches and saws with ease and accuracy
- Submersible, non-corrosive environmental design
- Lift-off cover
- Non-conductive, UV-resistant
- 216 lb-in impact resistance per UL746C
- Smooth surface, no color variations, swirls or color pockets, no voids
- Color: Gray

## Listings

- UL/cUL File E64358 NEMA Ratings 1, 3R, 4X, 6P, and 12 [UL508A, UL50 and UL50e]
- IEC 60529 Ratings IP66 per UL File E362920
- UL 1741 File E333478
- CSA Std. C22.2 1, 3R, 4X, 6P, and 12 per CSA File LR069014
- Temperature Range (-76°F to +274°F) (-60°C to +134°C)
- Flammability Rating UL94-5V
  - Self-extinguishing
  - Non-halogenated
  - Non-flame propagating
- NFPA No. 101 Flame Spread Class A (1)
- Impact Rating IK10

## Certifications

- cULus, IEC, REACH, RoHS
- Outdoor UV Exposure (UL 746C) (f1) Rated



## Shipping Schedule

Same day 1 - 5 days 1 - 7 days 1 - 15 days 1 - 20 days

Color indicates shipping lead time in business days.

## MachoBox Series Fiberglass Enclosures – Screw Cover

Part Number	Price	Enclosure Overall Size HxWxD	Wt.	Carbon Steel Subpanel	Fiberglass Subpanel	Aluminum Subpanel
<b>M604W</b>		7.50 x 5.43 x 4.75 [191 x 138 x 121]	2.5 [1.1]	<b>BP64CS</b>	—	<b>BP64A</b>
<b>M606W</b>		7.50 x 7.50 x 4.75 [191 x 191 x 121]	2.5 [1.1]	<b>BP66CS</b>	—	<b>BP66A</b>
<b>M806W</b>		9.62 x 7.50 x 4.74 [244 x 191 x 120]	3.2 [1.5]	<b>BP86CS</b>	<b>BP86FG</b>	<b>BP86A</b>
<b>M808W</b>		9.56 x 9.38 x 4.87 [243 x 238 x 124]	3.4 [1.5]	<b>BP88CS</b>	—	—
<b>M1008W</b>		11.62 x 9.41 x 4.25 [295 x 239 x 108]	4.0 [1.8]	<b>BP108CS</b>	<b>BP108FG</b>	<b>BP108A</b>
<b>M1008WA*</b>		11.62 x 9.37 x 5.06 [295 x 238 x 129]	4.1 [1.9]	<b>BP108CS</b>	<b>BP108FG</b>	<b>BP108A</b>
<b>M100806W</b>		11.97 x 9.42 x 6.50 [304 x 239 x 165]	4.6 [2.1]	<b>BP108CS</b>	<b>BP108FG</b>	<b>BP108A</b>
<b>M1210W</b>		13.56 x 11.43 x 5.21 [344 x 290 x 132]	5.8 [2.6]	<b>BP1210CS</b>	<b>BP1210FG</b>	<b>BP1210A</b>
<b>M1412W</b>		15.50 x 13.50 x 6.25 [394 x 343 x 159]	8.4 [3.8]	<b>BP1412CS</b>	<b>BP1412FG</b>	<b>BP1412A</b>
<b>M1614W</b>		17.53 x 15.46 x 6.23 [445 x 393 x 158]	10.4 [4.7]	<b>BP1614CS</b>	<b>BP1614FG</b>	<b>BP1614A</b>
<b>M1816W</b>		19.62 x 17.61 x 8.82 [498 x 447 x 224]	17.6 [8.0]	<b>BP1816CS</b>	<b>BP1816FG</b>	<b>BP1816A</b>
<b>M2016W</b>		22.00 x 17.68 x 8.83 [559 x 449 x 224]	19.9 [9.0]	<b>BPM2016CS</b>	—	<b>BPM2016A</b>

Notes: Subpanels must be ordered separately.

Dimensions in inches [millimeters].

Weight in pounds [kilograms].

\*Crowned Cover

In crowned cover units, the center of the cover is raised 0.75in [19 mm].

Crowned cover is available only in 10 x 8 x 5 in [254 x 203 x 127 mm] enclosure.

# MachoBox Series – Fiberglass Enclosures

## Hinged Screw Cover



**AttaBox**  
A ROBROY ENCLOSURES™ BRAND



M1412HW

### Construction

- Hot compression molded fiberglass reinforced polyester (thermoset)
- Poured polyurethane seamless gasket provides watertight, dust-tight environmental seal
- 304 stainless used on all external hardware
- Rounded edges, minimal protrusions or exposed pocket area for accumulation of dust or debris
- Molded in flange for easy mounting
- Raised bosses with brass inserts accepting #10-32 screws for optional panel mounting
- Workable material cuts, drills, punches and saw with ease and accuracy
- Submersible, non-corrosive environmental design
- Full length stainless steel hinged cover with two screws
- Full 180° door opening
- Non-conductive, UV-resistant
- 216 lb-in impact resistance per UL746C
- Smooth surface, no color variations, swirls or color pockets, no voids
- Color: Gray

### Listings

- UL/cUL File E64358
- NEMA Ratings 1, 3R, 4X, 6P, and 12 [UL508A, UL50 and UL50e]
- IEC 60529 Ratings IP66 per UL File E362920
- UL 1741 File E333478
- CSA Std. C22.2 1, 3R, 4X, 6P, and 12 per CSA File LR069014
- Temperature Range (-76°F to +274°F) (-60°C to +134°C)
- Flammability Rating UL94-5V
  - Self-extinguishing
  - Non-halogenated
  - Non-flame propagating
- NFPA No. 101 Flame Spread Class A (1)
- Impact Rating IK10

### Certifications

- cULus, IEC, REACH, RoHS
- Outdoor UV Exposure (UL 746C) (f1) Rated



### Shipping Schedule

Same day 1 - 5 days 1 - 7 days 1 - 15 days 1 - 20 days

Color indicates shipping lead time in business days.

## MachoBox Series Fiberglass Enclosures – Hinged Screw Cover

Part Number	Price	Enclosure Overall Size HxWxD	Wt.	Carbon Steel Subpanel	Fiberglass Subpanel	Aluminum Subpanel
<u>M604HW</u>		7.50 x 5.43 x 4.75 [191 x 138 x 121]	2.5 [1.1]	<u>BP64CS</u>	—	<u>BP64A</u>
<u>M606HW</u>		7.50 x 7.50 x 4.75 [191 x 191 x 121]	2.5 [1.1]	<u>BP66CS</u>	—	<u>BP66A</u>
<u>M806HW</u>		9.62 x 7.50 x 4.74 [244 x 191 x 120]	3.2 [1.5]	<u>BP86CS</u>	<u>BP86FG</u>	<u>BP86A</u>
<u>M808HW</u>		11.62 x 9.41 x 4.25 [295 x 239 x 108]	3.4 [1.5]	<u>BP88CS</u>	—	—
<u>M1008HW</u>		11.62 x 9.37 x 5.06 [295 x 238 x 129]	4.0 [1.8]	<u>BP108CS</u>	<u>BP108FG</u>	<u>BP108A</u>
<u>M1008HWA</u>		13.56 x 11.43 x 5.21 [344 x 290 x 132]	4.1 [1.9]	<u>BP108CS</u>	<u>BP108FG</u>	<u>BP108A</u>
<u>M100806HW*</u>		9.56 x 9.38 x 4.87 [243 x 238 x 124]	4.6 [2.1]	<u>BP108CS</u>	<u>BP108FG</u>	<u>BP108A</u>
<u>M1210HW</u>		15.50 x 13.50 x 6.25 [394 x 343 x 159]	5.8 [2.6]	<u>BP1210CS</u>	<u>BP1210FG</u>	<u>BP1210A</u>
<u>M1412HW</u>		11.97 x 9.42 x 6.50 [304 x 239 x 165]	8.4 [3.8]	<u>BP1412CS</u>	<u>BP1412FG</u>	<u>BP1412A</u>
<u>M1614HW</u>		17.53 x 15.46 x 6.23 [445 x 393 x 158]	10.4 [4.7]	<u>BP1614CS</u>	<u>BP1614FG</u>	<u>BP1614A</u>
<u>M1816HW</u>		19.62 x 17.61 x 8.82 [498 x 447 x 224]	17.6 [8.0]	<u>BP1816CS</u>	<u>BP1816FG</u>	<u>BP1816A</u>
<u>M2016HW</u>		22.00 x 17.68 x 8.83 [559 x 449 x 224]	19.9 [9.0]	<u>BPM2016CS</u>	—	<u>BPM2016A</u>

Notes: Subpanels must be ordered separately.

Dimensions in inches [millimeters].

Weight in pounds [kilograms].

\*Crowned Cover

In crowned cover units, the center of the cover is raised 0.75in [19 mm].

Crowned cover is available only in 10 x 8 x 5 in [254 x 203 x 127 mm] enclosure.

# MachoBox Series – Fiberglass Enclosures

## Single-Door with Twist-Lock Latches



**M1210HLL**

### Construction

- Hot compression molded fiberglass reinforced polyester (thermoset)
- Poured polyurethane seamless gasket provides watertight, dust-tight environmental seal
- 304 stainless steel used on all external hardware
- Rounded edges, minimal protrusions or exposed pocket area for accumulation of dust or debris
- Molded in flange for easy mounting
- Raised bosses with brass inserts accepting #10-32 screws for optional panel mounting
- Workable material cuts, drills, punches and saws with ease and accuracy
- Full length, stainless steel, hinged cover with twist-lock latches
- Full 180° door opening
- Non-conductive, UV-resistant
- 216 lb-in impact resistance per UL746C
- Smooth surface, no color variations, swirls or color pockets, no voids
- Submersible, non-corrosive environmental design
- Color: Gray

### Listings

- UL/cUL File E64358
- NEMA Ratings 1, 3R, 4X, 6P, and 12 [UL508A, UL50 and UL50e]
- IEC 60529 Ratings IP66 per UL File E362920
- UL 1741 File E333478
- CSA Std. C22.2 1, 3R, 4X, 6P, and 12 per CSA File LR069014
- Temperature Range (-76°F to +274°F) (-60°C to +134°C)
- Flammability Rating UL94-5V
  - Self-extinguishing
  - Non-halogenated
  - Non-flame propagating
- NFPA No. 101 Flame Spread Class A (1)
- Impact Rating IK10

### Certifications

- cULus, IEC, REACH, RoHS
- Outdoor UV Exposure (UL 746C) (f1) Rated



### Shipping Schedule

Same day 1 - 5 days 1 - 7 days 1 - 15 days 1 - 20 days

Color indicates shipping lead time in business days.

### MachoBox Series Fiberglass Enclosures – Single-Door with Twist-Lock Latches

Part Number	Price	Enclosure Overall Size HxWxD	Wt.	No. Latches	Carbon Steel Subpanel	Fiberglass Subpanel	Aluminum Subpanel
<a href="#">M604HLL</a>		7.47 x 5.45 x 4.70 [190 x 138 x 119]	2.2 [1.0]	1	<a href="#">BP64CS</a>	—	<a href="#">BP64A</a>
<a href="#">M606HLL</a>		7.50 x 7.53 x 4.82 [191 x 191 x 122]	2.6 [1.2]	1	<a href="#">BP66CS</a>	—	<a href="#">BP66A</a>
<a href="#">M806HLL</a>		9.63 x 7.52 x 4.70 [245 x 191 x 119]	3.1 [1.4]	1	<a href="#">BP86CS</a>	<a href="#">BP86FG</a>	<a href="#">BP86A</a>
<a href="#">M808HLL</a>		9.56 x 9.38 x 4.87 [243 x 238 x 124]	3.3 [1.5]	1	<a href="#">BP88CS</a>	—	—
<a href="#">M1008HLL</a>		11.63 x 9.41 x 4.22 [295 x 239 x 107]	4.0 [1.8]	2	<a href="#">BP108CS</a>	<a href="#">BP108FG</a>	<a href="#">BP108A</a>
<a href="#">M1008HALL*</a>		11.63 x 9.37 x 5.08 [295 x 238 x 129]	4.3 [2.0]	2	<a href="#">BP108CS</a>	<a href="#">BP108FG</a>	<a href="#">BP108A</a>
<a href="#">M100806HLL</a>		11.97 x 9.42 x 6.50 [304 x 239 x 165]	4.6 [2.1]	1	<a href="#">BP108CS</a>	<a href="#">BP108FG</a>	<a href="#">BP108A</a>
<a href="#">M1210HLL</a>		13.56 x 11.43 x 5.22 [344 x 290 x 133]	5.8 [2.6]	2	<a href="#">BP1210CS</a>	<a href="#">BP1210FG</a>	<a href="#">BP1210A</a>
<a href="#">M1412HLL</a>		15.50 x 13.48 x 6.20 [394 x 342 x 157]	9.2 [4.2]	2	<a href="#">BP1412CS</a>	<a href="#">BP1412FG</a>	<a href="#">BP1412A</a>
<a href="#">M1614HLL</a>		17.53 x 15.46 x 6.21 [445 x 393 x 158]	9.5 [4.3]	2	<a href="#">BP1614CS</a>	<a href="#">BP1614FG</a>	<a href="#">BP1614A</a>
<a href="#">M1816HLL</a>		19.63 x 17.61 x 8.81 [499 x 447 x 224]	17.3 [7.8]	2	<a href="#">BP1816CS</a>	<a href="#">BP1816FG</a>	<a href="#">BP1816A</a>
<a href="#">M2016HLL</a>		22.00 x 17.68 x 8.81 [559 x 449 x 224]	19.0 [8.6]	2	<a href="#">BPM2016CS</a>	—	<a href="#">BPM2016A</a>

Notes: Subpanels must be ordered separately.

Dimensions in inches [millimeters].

Weight in pounds [kilograms].

\*Crowned Cover

In crowned cover units, the center of the cover is raised 0.75in [19 mm].

Crowned cover is available only in 10 x 8 x 5 in [254 x 203 x 127 mm] enclosure.

# MachoBox Series – Fiberglass Enclosures

## Single-Door with Quick-Release Latches



**AttaBox**  
A ROBROY ENCLOSURES™ BRAND



M1210HPL

### Construction

- Hot compression molded fiberglass reinforced polyester (thermoset)
- Poured polyurethane seamless gasket provides watertight, dust-tight environmental seal
- 304 stainless steel used on all external hardware
- Rounded edges, minimal protrusions or exposed pocket areas for accumulation of dust or debris
- Molded in flange for easy mounting
- Raised bosses with brass inserts accepting #10-32 screws for optional panel mounting
- Workable material cuts, drills, punches and saws with ease and accuracy
- Full length, stainless steel, hinged cover with padlockable quick-release latches
- Full 180° door opening
- Non-conductive, UV-resistant
- 216 lb-in impact resistance per UL746C
- Smooth surface, no color variations, swirls or color pockets, no voids
- Submersible, non-corrosive environmental design
- Color: Gray

### Listings

- UL/cUL File E64358
- NEMA Ratings 1, 3R, 4X, 6P, and 12 [UL508A, UL50 and UL50e]
- IEC 60529 Ratings IP66 per UL File E362920
- UL 1741 File E333478
- CSA Std. C22.2 1, 3R, 4X, 6P, and 12 per CSA File LR069014
- Temperature Range (-76°F to +274°F) (-60°C to +134°C)
- Flammability Rating UL94-5V
  - Self-extinguishing
  - Non-halogenated
  - Non-flame propagating
- NFPA No. 101 Flame Spread Class A (1)
- Impact Rating IK10

### Certifications

- cULus, IEC, REACH, RoHS
- Outdoor UV Exposure (UL 746C) (f1) Rated



### Shipping Schedule

Same day	1 - 5 days	1 - 7 days	1 - 15 days	1 - 20 days
----------	------------	------------	-------------	-------------

Color indicates shipping lead time in business days.

### MachoBox Series Fiberglass Enclosures – Single-Door with Quick-Release Latches

Part Number	Price	Enclosure Overall Size HxWxD	Wt.	No. Latches	Carbon Steel Subpanel	Fiberglass Subpanel	Aluminum Subpanel
<u>M604HPL</u>		7.50 x 5.43 x 4.75 [191 x 138 x 121]	2.1 [0.95]	1	<u>BP64CS</u>	—	<u>BP64A</u>
<u>M606HPL</u>		7.50 x 7.50 x 4.75 [191 x 191 x 121]	2.5 [1.1]	1	<u>BP66CS</u>	—	<u>BP66A</u>
<u>M806HPL</u>		9.62 x 7.50 x 4.74 [244 x 191 x 120]	3.2 [1.5]	1	<u>BP86CS</u>	<u>BP86FG</u>	<u>BP86A</u>
<u>M808HPL</u>		9.56 x 9.38 x 4.87 [243 x 238 x 124]	3.3 [1.5]	1	<u>BP88CS</u>	—	—
<u>M1008HPL</u>		11.62 x 9.41 x 4.25 [295 x 239 x 108]	4.1 [1.9]	2	<u>BP108CS</u>	<u>BP108FG</u>	<u>BP108A</u>
<u>M1008HAPL*</u>		11.62 x 9.37 x 5.06 [295 x 238 x 129]	4.1 [1.9]	2	<u>BP108CS</u>	<u>BP108FG</u>	<u>BP108A</u>
<u>M100806HPL</u>		11.97 x 9.42 x 6.50 [304 x 239 x 165]	4.6 [2.1]	1	<u>BP108CS</u>	<u>BP108FG</u>	<u>BP108A</u>
<u>M1210HPL</u>		13.56 x 11.43 x 5.21 [344 x 290 x 132]	5.8 [2.6]	2	<u>BP1210CS</u>	<u>BP1210FG</u>	<u>BP1210A</u>
<u>M1412HPL</u>		15.50 x 13.50 x 6.25 [394 x 343 x 159]	8.4 [3.8]	2	<u>BP1412CS</u>	<u>BP1412FG</u>	<u>BP1412A</u>
<u>M1614HPL</u>		17.53 x 15.46 x 6.23 [445 x 393 x 158]	10.0 [4.5]	2	<u>BP1614CS</u>	<u>BP1614FG</u>	<u>BP1614A</u>
<u>M1816HPL</u>		19.62 x 17.61 x 8.82 [498 x 447 x 224]	18.0 [8.2]	2	<u>BP1816CS</u>	<u>BP1816FG</u>	<u>BP1816A</u>
<u>M2016HPL</u>		22.00 x 17.68 x 8.83 [559 x 449 x 224]	20.0 [9.0]	2	<u>BPM2016CS</u>	—	<u>BPM2016A</u>
<u>M2020HPL**</u>		23.50 x 22.12 x 11.70 [597 x 562 x 297]	26.0 [11.8]	4	<u>BPM2020CS</u>	—	<u>BPM2020A</u>
<u>M2420HPL**</u>		27.50 x 22.12 x 11.70 [699 x 562 x 297]	32.0 [14.5]	4	<u>BPM2420CS</u>	—	<u>BPM2420A</u>
<u>M2424HPL**</u>		27.50 x 26.12 x 11.70 [699 x 663 x 297]	37.0 [16.8]	4	<u>BPM2424CS</u>	—	<u>BPM2424A</u>
<u>M2430HPL</u>		26.19 x 32.19 x 12.29 [665 x 818 x 312]	46.0 [20.9]	5	—	—	<u>BPM3024A</u>
<u>M3024HPL</u>		32.19 x 26.18 x 12.26 [818 x 665 x 311]	46.0 [20.9]	5	—	—	<u>BPM3024A</u>

Notes: Subpanels must be ordered separately.

Dimensions in inches [millimeters].

Weight in pounds [kilograms]

\*Crowned Cover

In crowned cover units, the center of the cover is raised 0.75 in. [19 mm].

Crowned cover is available only in 10 x 8 x 5 in. [254 x 203 x 127 mm] enclosure.

\*\*NEMA RATING 13.

# MachoBox Series – Fiberglass Enclosures

## White Single-Door with Quick-Release Latches



WH-M1412HPL

### Construction

- Hot compression molded fiberglass reinforced polyester (thermoset)
- Poured polyurethane seamless gasket provides watertight, dust-tight environmental seal
- 304 stainless used on all external hardware
- Rounded edges, minimal protrusions or exposed pocket area for accumulation of dust or debris
- Molded in flange for easy mounting
- Raised bosses with brass inserts accepting #10-32 screws for optional panel mounting
- Workable material cuts, drills, punches and saw with ease and accuracy
- Submersible, non-corrosive environmental design
- Full length stainless steel hinged cover with padlockable quick-release latches
- Full 180° door opening
- Non-conductive, UV-resistant
- 216 lb-in impact resistance per UL746C
- Smooth surface, no color variations, swirls or color pockets, no voids
- Color: White

### Listings

- UL/cUL File E64358
- NEMA Ratings 1, 3R, 4X, 6P, and 12 [UL508A, UL50 and UL50e]
- IEC 60529 Ratings IP66 per UL File E362920
- UL 1741 File E333478
- CSA Std. C22.2 1, 3R, 4X, 6P, and 12 per CSA File LR069014
- Temperature Range (-76°F to +274°F) (-60°C to +134°C)
- Flammability Rating UL94-5V
  - Self-extinguishing
  - Non-halogenated
  - Non-flame propagating
- NFPA No. 101 Flame Spread Class A (1)
- Impact Rating IK10

### Certifications

- cULus, IEC, REACH, RoHS Outdoor



### Shipping Schedule

Same day 1 - 5 days 1 - 7 days 1 - 15 days 1 - 20 days

Color indicates shipping lead time in business days.

### MachoBox Series Fiberglass Enclosures – White Single-Door with Quick Release Latches

Part Number	Price	Enclosure Overall Size HxWxD	Wt.	No. Latches	Carbon Steel Subpanel	Fiberglass Subpanel	Aluminum Subpanel
<u>WH-M604HPL</u>		7.47 x 5.45 x 4.70 [190 x 138 x 119]	2.1 [0.95]	1	<u>BP64CS</u>	—	<u>BP64A</u>
<u>WH-M606HPL</u>		7.50 x 7.53 x 4.82 [191 x 191 x 122]	2.4 [1.1]	1	<u>BP66CS</u>	—	<u>BP66A</u>
<u>WH-M806HPL</u>		9.63 x 7.52 x 4.70 [245 x 191 x 119]	3.1 [1.4]	1	<u>BP86CS</u>	<u>BP86FG</u>	<u>BP86A</u>
<u>WH-M1008HPL</u>		11.63 x 9.41 x 4.22 [295 x 239 x 107]	4.1 [1.9]	2	<u>BP108CS</u>	<u>BP108FG</u>	<u>BP108A</u>
<u>WH-M1210HPL</u>		13.56 x 11.43 x 5.22 [344 x 290 x 133]	5.9 [2.7]	2	<u>BP1210CS</u>	<u>BP1210FG</u>	<u>BP1210A</u>
<u>WH-M1412HPL</u>		15.50 x 13.48 x 6.20 [394 x 342 x 157]	8.7 [3.9]	2	<u>BP1412CS</u>	<u>BP1412FG</u>	<u>BP1412A</u>
<u>WH-M1614HPL</u>		17.53 x 15.46 x 6.21 [445 x 393 x 158]	10.7 [4.9]	2	<u>BP1614CS</u>	<u>BP1614FG</u>	<u>BP1614A</u>
<u>WH-M1816HPL</u>		19.63 x 17.61 x 8.81 [499 x 447 x 224]	17.5 [8.0]	2	<u>BP1816CS</u>	<u>BP1816FG</u>	<u>BP1816A</u>
<u>WH-M2016HPL</u>		22.00 x 17.68 x 8.81 [559 x 449 x 224]	19.8 [9.0]	2	<u>BPM2016CS</u>	—	<u>BPM2016A</u>

Notes: Subpanels must be ordered separately.  
Dimensions in inches [millimeters].  
Weight in pounds [kilograms].

# MachoBox Series – Fiberglass Enclosures

## Single-Door with Acrylic Window and Twist-Lock Latches



**AttaBox**  
A ROBROY ENCLOSURES™ BRAND



MW1210HLL

### Construction

- Hot compression molded fiberglass reinforced polyester (thermoset)
- Poured polyurethane seamless gasket provides watertight, dust-tight environmental seal
- 304 stainless steel used on all external hardware
- Rounded edges, minimal protrusions or exposed pocket area for accumulation of dust or debris
- Molded in flange for easy mounting
- Raised bosses with brass inserts accepting #10-32 screws for optional panel mounting
- Workable material cuts, drills, punches and saws with ease and accuracy
- Scratch- and abrasion-resistant UVA acrylic flush bonded window
- Submersible, non-corrosive environmental design
- Full 180° door opening
- Non-conductive, UV-resistant
- 216 lb-in impact resistance per UL746C
- Smooth surface, no color variations, swirls or color pockets, no voids
- Full length stainless steel hinged cover with twist-lock latches
- Color: Gray

### Listings

- UL/cUL File E64358
- NEMA Ratings 1, 3R, 4X, 6P, and 12 [UL508A, UL50 and UL50e]
- IEC 60529 Ratings IP66 per UL File E362920
- UL 1741 File E333478
- CSA Std. C22.2 1, 3R, 4X, 6P, and 12 per CSA File LR069014
- Temperature Range (-76°F to +274°F) (-60°C to +134°C)
- Window Temperature Range: -26°F to 170°F (-32°C to 76°C)
- Flammability Rating UL94-5V Flammability Rating window: UL94V-HB
- Flammability Rating UL94-5V
  - Self-extinguishing
  - Non-halogenated
  - Non-flame propagating
- NFPA No. 101 Flame Spread Class A (1)
- Impact Rating IK10

### Certifications

- cULus, IEC, REACH, RoHS
- Outdoor UV Exposure (UL 746C) (f1) Rated



### Shipping Schedule

Same day	1 - 5 days	1 - 7 days	1 - 15 days	1 - 20 days
----------	------------	------------	-------------	-------------

Color indicates shipping lead time in business days.

### MachoBox Series Fiberglass Enclosures – Single-Door with Acrylic Window and Twist-Lock Latches

Part Number	Price	Enclosure Overall Size HxWxD	Wt.	No. Latches	Carbon Steel Subpanel	Fiberglass Subpanel	Aluminum Subpanel	Drawing Link
<a href="#">MW604HLL</a>		7.50 x 5.43 x 4.75 [191 x 138 x 121]	2.5 [1.1]	1	<a href="#">BP64CS</a>	—	<a href="#">BP64A</a>	<a href="#">PDF</a>
<a href="#">MW806HLL</a>		9.62 x 7.50 x 4.74 [244 x 191 x 120]	3.5 [1.6]	1	<a href="#">BP86CS</a>	<a href="#">BP86FG</a>	<a href="#">BP86A</a>	<a href="#">PDF</a>
<a href="#">MW1008HLL</a>		11.62 x 9.41 x 4.25 [295 x 239 x 108]	5.0 [2.3]	2	<a href="#">BP108CS</a>	<a href="#">BP108FG</a>	<a href="#">BP108A</a>	<a href="#">PDF</a>
<a href="#">MW100806HLL</a>		11.97 x 9.42 x 6.50 [304 x 239 x 165]	4.6 [2.1]	2	<a href="#">BP108CS</a>	<a href="#">BP108FG</a>	<a href="#">BP108A</a>	<a href="#">PDF</a>
<a href="#">MW1210HLL</a>		13.56 x 11.43 x 5.21 [344 x 290 x 132]	6.5 [2.9]	2	<a href="#">BP1210CS</a>	<a href="#">BP1210FG</a>	<a href="#">BP1210A</a>	<a href="#">PDF</a>
<a href="#">MW1412HLL</a>		15.50 x 13.50 x 6.25 [394 x 343 x 159]	8.5 [3.9]	2	<a href="#">BP1412CS</a>	<a href="#">BP1412FG</a>	<a href="#">BP1412A</a>	<a href="#">PDF</a>
<a href="#">MW1614HLL</a>		17.53 x 15.46 x 6.23 [445 x 393 x 158]	11.5 [5.2]	2	<a href="#">BP1614CS</a>	<a href="#">BP1614FG</a>	<a href="#">BP1614A</a>	<a href="#">PDF</a>
<a href="#">MW1816HLL</a>		19.62 x 17.61 x 8.82 [498 x 447 x 224]	19.25 [8.73]	2	<a href="#">BP1816CS</a>	<a href="#">BP1816FG</a>	<a href="#">BP1816A</a>	<a href="#">PDF</a>
<a href="#">MW2016HLL</a>		22.00 x 17.68 x 8.83 [559 x 449 x 224]	20.25 [9.19]	2	<a href="#">BPM2016CS</a>	—	<a href="#">BPM2016A</a>	<a href="#">PDF</a>

Notes: Subpanels must be ordered separately.  
Dimensions in inches [millimeters].  
Weight in pounds [kilograms].

# MachoBox Series – Fiberglass Enclosures

## Single-Door with Acrylic Window and Quick-Release Latches



**AttaBox**  
A ROBROY ENCLOSURES™ BRAND



MW604HPL

### Construction

- Hot compression molded fiberglass reinforced polyester (thermoset)
- Poured polyurethane seamless gasket provides watertight, dust-tight environmental seal
- 304 stainless steel used on all external hardware
- Rounded edges, minimal protrusions or exposed pocket area for accumulation of dust or debris
- Molded-in flange for easy mounting
- Raised bosses with brass inserts accepting #10-32 screws for optional panel mounting
- Workable material cuts, drills, punches and saws with ease and accuracy
- Scratch- and abrasion-resistant UVA acrylic flush bonded window
- Submersible, non-corrosive environmental design
- Full 180° door opening
- Non-conductive, UV-resistant
- 216 lb-in impact resistance per UL746C
- Smooth surface, no color variations, swirls or color pockets, no voids
- Full length stainless steel hinged cover with padlockable quick-release latches
- Color: Gray

### Listings

- UL/cUL File E64358
- NEMA Ratings 1, 3R, 4X, 6P, and 12 [UL508A, UL50 and UL50e]
- IEC 60529 Ratings IP66 per UL File E362920
- UL 1741 File E333478
- CSA Std. C22.2 1, 3R, 4X, 6P, and 12 per CSA File LR069014
- Temperature Range (-76°F to +274°F) (-60°C to +134°C)
- Window Temperature Range: -26°F to 170°F (-32°C to 76°C)
- Flammability Rating UL94-5VFlammability Rating window: UL94V-HB
- Flammability Rating UL94-5V
  - Self-extinguishing
  - Non-halogenated
  - Non-flame propagating
- NFPA No. 101 Flame Spread Class A (1)
- Impact Rating IK10

### Certifications

- cULus, IEC, REACH, RoHS
- Outdoor UV Exposure (UL 746C) (f1) Rated



### Shipping Schedule

Same day | 1 - 5 days | 1 - 7 days | 1 - 15 days | 1 - 20 days

Color indicates shipping lead time in business days.

## MachoBox Series – Fiberglass Enclosures Single-Door with Acrylic Window and Quick-Release Latches

Part Number	Price	Enclosure Overall Size HxWxD	Wt.	No. Latches	Carbon Steel Subpanel	Fiberglass Subpanel	Aluminum Subpanel	Drawing Link
<u>MW604HPL</u>		7.50 x 5.43 x 4.75 [191 x 138 x 121]	2.5 [1.1]	1	<u>BP64CS</u>	—	<u>BP64A</u>	<u>PDF</u>
<u>MW606HPL</u>		7.50 x 7.50 x 4.75 [191 x 191 x 121]	2.8 [1.3]	1	<u>BP66CS</u>	—	<u>BP66A</u>	<u>PDF</u>
<u>MW806HPL</u>		9.62 x 7.50 x 4.74 [244 x 191 x 120]	3.5 [1.6]	1	<u>BP86CS</u>	<u>BP86FG</u>	<u>BP86A</u>	<u>PDF</u>
<u>MW1008HPL</u>		11.62 x 9.41 x 4.25 [295 x 239 x 108]	5.0 [2.3]	2	<u>BP108CS</u>	<u>BP108FG</u>	<u>BP108A</u>	<u>PDF</u>
<u>MW100806HPL</u>		11.97 x 9.42 x 6.50 [304 x 239 x 165]	5.3 [2.4]	2	<u>BP108CS</u>	<u>BP108FG</u>	<u>BP108A</u>	<u>PDF</u>
<u>MW1210HPL</u>		13.56 x 11.43 x 5.21 [344 x 290 x 132]	6.5 [2.9]	2	<u>BP1210CS</u>	<u>BP1210FG</u>	<u>BP1210A</u>	<u>PDF</u>
<u>MW1412HPL</u>		15.50 x 13.50 x 6.25 [394 x 343 x 159]	8.5 [3.9]	2	<u>BP1412CS</u>	<u>BP1412FG</u>	<u>BP1412A</u>	<u>PDF</u>
<u>MW1614HPL</u>		17.53 x 15.46 x 6.23 [445 x 393 x 158]	11.5 [5.2]	2	<u>BP1614CS</u>	<u>BP1614FG</u>	<u>BP1614A</u>	<u>PDF</u>
<u>MW1816HPL*</u>		19.62 x 17.61 x 8.82 [498 x 447 x 224]	19.3 [8.8]	2	<u>BP1816CS</u>	<u>BP1816FG</u>	<u>BP1816A</u>	<u>PDF</u>

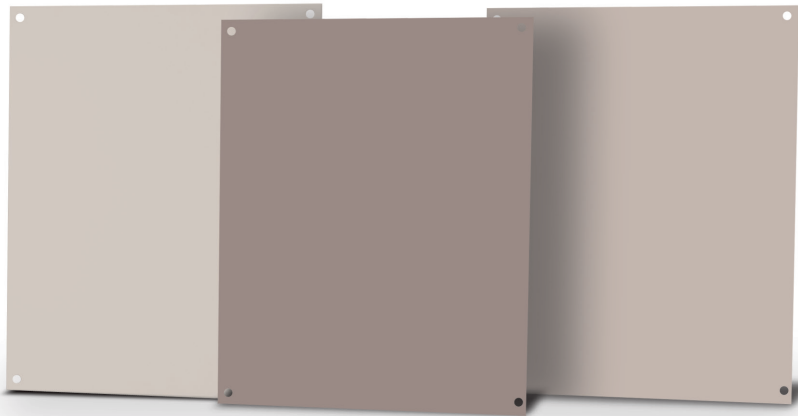
Notes: Subpanels must be ordered separately.

Dimensions in inches [millimeters].

Weight in pounds [kilograms].

\*1816 size is not 6P rated.

# Subpanels for Freedom, MachoBox and Centurion Series Fiberglass Enclosures



## Carbon steel subpanels

- Material: Carbon steel
- Finish: White polyester powder finish

## Fiberglass subpanels

- Material: Fiberglass reinforced polyester (FRP)
- Color: Gray

Part Number	Price	Subpanel Size HxWxD	Enclosure Nominal Size HxW	Wt(lb)
<a href="#">BP64CS</a>		4.88 x 2.88 x 0.075 [124 x 73 x 1.9]	6 x 4	0.3
<a href="#">BP66CS</a>		4.88 x 4.88 x 0.075 [124 x 124 x 1.9]	6 x 6	0.5
<a href="#">BP76CS</a>		6.00 x 4.88 x 0.075 [152 x 124 x 1.9]	7 x 6	0.6
<a href="#">BP86CS</a>		6.75 x 4.88 x 0.075 [152 x 124 x 1.9]	8 x 6	0.8
<a href="#">BP88CS</a>		6.88 x 6.88 x 0.075 [175 x 175 x 1.9]	8 x 8	0.8
<a href="#">BP96CS</a>		8.25 x 4.88 x 0.075 [175 x 124 x 1.9]	9 x 6	0.9
<a href="#">BP108CS</a>		8.75 x 6.88 x 0.075 [225 x 175 x 1.9]	10 x 8	1.3
<a href="#">BP1210CS</a>		10.88 x 8.75 x 0.075 [276 x 225 x 1.9]	12 x 10	2.1
<a href="#">BP1412CS</a>		12.88 x 10.88 x 0.075 [327 x 276 x 1.9]	14 x 12	3.0
<a href="#">BP1614CS</a>		14.88 x 12.88 x 0.075 [378 x 327 x 1.9]	16 x 14	4.1
<a href="#">BP1816CS</a>		16.88 x 14.88 x 0.075 [429 x 378 x 1.9]	18 x 16	5.4
<a href="#">BPM2016CS</a>		18.88 x 14.88 x 0.075 [479 x 378 x 1.9]	20 x 16	6.1
<a href="#">BPM2020CS</a>		18.00 x 18.00 x 0.105 [457 x 457 x 2.7]	20 x 20	9.4
<a href="#">BPM2420CS</a>		22.00 x 18.00 x 0.105 [558 x 457 x 2.7]	24 x 20	11
<a href="#">BPM2424CS</a>		22.00 x 22.00 x 0.105 [558 x 558 x 2.7]	24 x 24	22

Note: Dimensions in inches [millimeters].

Part Number	Price	Subpanel Size HxWxD	Enclosure Nominal Size HxW	Wt.(lb)
<a href="#">BP64FG</a>		4.88 x 2.88 x 0.13 [124 x 73 x 3.2]	6 x 4	0.1
<a href="#">BP66FG</a>		4.88 x 4.88 x 0.13 [124 x 124 x 3.2]	6 x 6	0.2
<a href="#">BP86FG</a>		6.88 x 4.88 x 0.13 [175 x 124 x 3.2]	8 x 6	0.3
<a href="#">BP88FG</a>		6.88 x 6.88 x 0.13 [175 x 175 x 3.2]	8 x 8	0.3
<a href="#">BP108FG</a>		8.88 x 6.88 x 0.13 [225 x 175 x 3.2]	10 x 8	0.5
<a href="#">BP1210FG</a>		10.88 x 8.88 x 0.13 [276 x 225 x 3.2]	12 x 10	0.9
<a href="#">BP1412FG</a>		12.88 x 10.88 x 0.13 [327 x 276 x 3.2]	14 x 12	1.0
<a href="#">BP1614FG</a>		14.88 x 12.88 x 0.13 [378 x 327 x 3.2]	16 x 14	0.8
<a href="#">BP1816FG</a>		16.88 x 14.88 x 0.13 [429 x 378 x 3.2]	18 x 16	2.0
<a href="#">BPM2016FG</a>		18.88 x 14.88 x 0.13 [479 x 378 x 3.2]	20 x 16	2.2
<a href="#">BPM2020FG</a>		18.00 x 18.00 x 0.13 [457 x 457 x 3.2]	20 x 20	2.3
<a href="#">BPM2420FG</a>		22.00 x 18.00 x 0.13 [558 x 457 x 3.2]	24 x 20	2.8
<a href="#">BPM2424FG</a>		22.00 x 22.00 x 0.13 [558 x 558 x 3.2]	24 x 24	3.5

Note: Dimensions in inches [millimeters].

# Subpanels for Freedom, MachoBox and Centurion Series Fiberglass Enclosures

## Shipping Schedule

Same day 1 - 5 days 1 - 7 days 1 - 15 days 1 - 20 days

Color indicates shipping lead time in business days.



**AttaBox**  
A ROBROY ENCLOSURES™ BRAND

## Aluminum subpanels

- Material: 3003H14 aluminum
- Finish: Mill

Part Number	Price	Subpanel Size HxWxD	Enclosure Nominal Size HxW	Wt. (lb)
<a href="#">BP64A</a>		4.88 x 2.88 x 0.081 [124 x 73 x 2.0]	6 x 4	0.1
<a href="#">BP66A</a>		4.88 x 4.88 x 0.081 [124 x 124 x 2.0]	6 x 6	0.2
<a href="#">BP86A</a>		6.88 x 4.88 x 0.081 [175 x 124 x 2.0]	8 x 6	0.3
<a href="#">BP108A</a>		8.88 x 6.88 x 0.081 [225 x 175 x 2.0]	10 x 8	0.5
<a href="#">BP1010A</a>		8.88 x 8.88 x 0.081 [225 x 225 x 2.0]	10 x 10	4.3
<a href="#">BP1210A</a>		10.88 x 8.88 x 0.081 [276 x 225 x 2.0]	12 x 10	0.8
<a href="#">BP1412A</a>		12.88 x 10.88 x 0.081 [327 x 276 x 2.0]	14 x 12	1.1
<a href="#">BP1614A</a>		14.88 x 12.88 x 0.081 [378 x 327 x 2.0]	16 x 14	1.5
<a href="#">BP1816A</a>		16.88 x 14.88 x 0.081 [429 x 378 x 2.0]	18 x 16	2.5
<a href="#">BPM2016A</a>		18.88 x 14.88 x 0.081 [479 x 378 x 2.0]	20 x 16	2.4
<a href="#">BPM2020A</a>		18.00 x 18.00 x 0.129 [457 x 457 x 3.3]	20 x 20	3.7
<a href="#">BPM2420A</a>		22.00 x 18.00 x 0.129 [558 x 457 x 3.3]	24 x 20	4.5
<a href="#">BPM2424A</a>		22.00 x 22.00 x 0.129 [558 x 558 x 3.3]	24 x 24	5.4
<a href="#">BPM3024A</a>		27.00 x 21.00 x 0.129 [686 x 533 x 3.3]	30 x 24	7.0

Note: Dimensions in inches (millimeters).

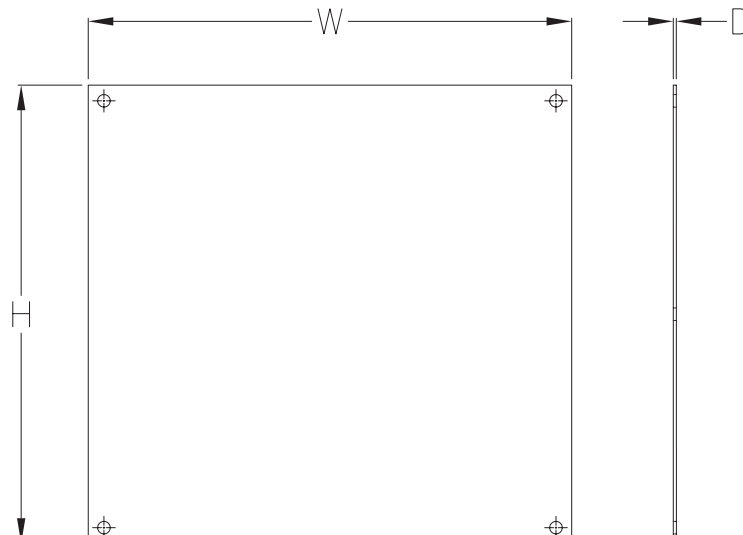


## Aluminum swing-out panel

- Swing-out panel with 8 swing-panel mounts
- Works with 30 x 24 in [762 x 610 mm] and 24 x 30 in [610 x 762 mm] MachoBox series enclosures

Part Number	Price	Panel Size HxWxD	Enclosure Nominal Size HxW	Wt. (lb)
<a href="#">M3024SPK</a>		27.00 x 21.00 X 0.129 [686 X 533 X 3.3]	30 x 24	11

## Dimensions



# Enclosure Accessories – Hole Seals and Plugs



## Hole Plugs for Non-Metal Enclosures

Designed to seal extra pushbutton holes, conduit openings, and knockout openings in AttaBox fiberglass enclosures from dirt, dust, oil, and water. Conduit hole sizes are nominal trade sizes, not actual hole sizes. (Example: 1 in [25 mm] conduit actual diameter = 1.315 in [33.4 mm]).

Shipping Schedule				
Same day	1 - 5 days	1 - 7 days	1 - 15 days	1 - 20 days
Color indicates shipping lead time in business days.				



**REHPSERIES1**



**REHPSERIES3**



Hole Plugs for Non-Metal Enclosures				
Hole Plugs	Price	Description	Nominal Hole Diameter Range	Wt [oz]
<b>REHPSERIES1</b>		Fiberglass-reinforced polyester (FRP), closed-cell neoprene gasket, for 1/2 to 3/4-inch hole.	0.50 - 0.81 [12.7 - 20.6]	2
<b>REHPSERIES1.5</b>		Fiberglass-reinforced polyester (FRP), closed-cell neoprene gasket. For use with 1/2in conduit holes.	0.88 [22.4]	2
<b>REHPSERIES2</b>		Fiberglass-reinforced polyester (FRP), closed-cell neoprene gasket, for 1/2- to 3/4-inch conduit holes and 22 or 30mm [1.18 in] pushbutton holes.	0.88 - 1.28 [22.4 - 32.5]	2
<b>REHPSERIES3</b>		Fiberglass-reinforced polyester (FRP), closed-cell neoprene gasket, for 1 to 1-1/4 inch conduit holes.	1.38 - 1.75 [35.1 - 44.5]	2
<b>REHPSERIES4</b>		Fiberglass-reinforced polyester (FRP), closed-cell neoprene gasket, for 1-1/2 to 2-inch conduit holes.	2.00 - 2.56 [50.1 - 65.0]	2
<b>REHPSERIES5</b>		Fiberglass-reinforced polyester (FRP), closed-cell neoprene gasket. For use with 2-1/2in conduit holes.	3.00 [76.2]	2
<b>REHPSERIES6</b>		Fiberglass-reinforced polyester (FRP), closed-cell neoprene gasket. For use with 3in conduit holes.	3.62 [92.0]	2
<b>REHPSERIES7</b>		Fiberglass-reinforced polyester (FRP), closed-cell neoprene gasket. For use with 3-1/2in conduit holes.	4.12 [104.7]	2
<b>REHPSERIES8</b>		Fiberglass-reinforced polyester (FRP), closed-cell neoprene gasket. For use with 4in conduit holes.	4.62 [117.4]	2

**Note: Dimensions in inches [millimeters].**

## Agency Approvals

- Fiberglass hole plug for UL 1, 3R, 4, 4X, 6, 6P, 12 Industrial control panel enclosures. [UL File E64358]
- CSA 1, 12, 3, 3R, 4, 4X, 6, 6P:IEC Code IP66, IP67, IP68[CSA File LR069014]



# Vents and Louvers for Non-Metallic Enclosures



## Drain/Breather Vents



REDVK3KIT



REB4XKIT

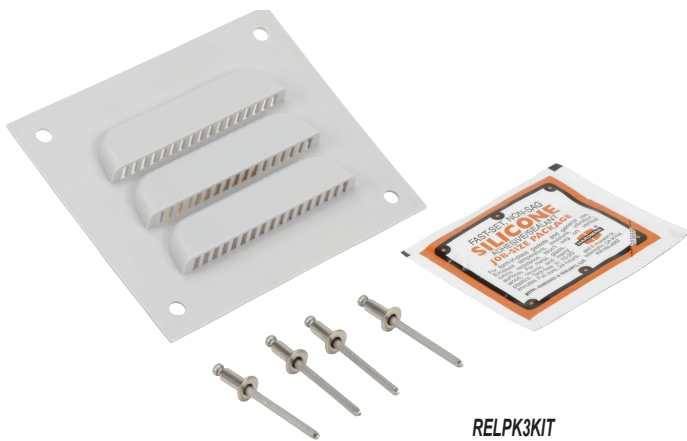


REDV4KIT

Shipping Schedule				
Same day	1 - 5 days	1 - 7 days	1 - 15 days	1 - 20 days
Color indicates shipping lead time in business days.				

Part Number	Price	Description	Wt.[oz]
<a href="#"><u>REDV1PVC</u></a>		AttaBox single drain vent, PVC. For use on non-metallic enclosures. Includes drain vent and silicone adhesive/sealant.	2
<a href="#"><u>REDVK3KIT</u></a>		AttaBox single drain vent kit, PVC. Includes drain vent and silicone adhesive/sealant.	2
<a href="#"><u>REB4XKIT</u></a>		AttaBox single breather vent kit allows enclosure to "breathe" while maintaining UL Type 4X enclosure rating.	4.8
<a href="#"><u>REDV4XKIT</u></a>		AttaBox single drain vent kit properly drains unwanted moisture while maintaining ULType 4X enclosure rating.	3.2

## Louver Vent



RELPK3KIT

Part Number	Price	Description	Wt.[oz]
<a href="#"><u>RELP1</u></a>		Louver vent, for ventilation in non-metallic enclosure, polypropylene, 4.5 inch wide x 4.0 inch high. For 3 inch x 3 inch cutout.	2
<a href="#"><u>RELPK3KIT</u></a>		Louver vent kit, for ventilation in non-metallic enclosure. Includes 4.5 inch wide x 4.0 inch high polypropylene louver vent, rivets and silicone adhesive/sealant. For 3 inch x 3 inch cutout.	2