

MachoBox Series – Fiberglass Enclosures

Screw Cover



AttaBox
A ROBROY ENCLOSURES™ BRAND



M1008WA Crowned Cover Model Shown

Construction

- Hot compression molded fiberglass reinforced polyester (thermoset)
- Poured polyurethane seamless gasket provides watertight, dust-tight environmental seal
- 304 stainless used on all external hardware
- Rounded edges, minimal protrusions or exposed pocket area for accumulation of dust or debris
- Molded in flange for easy mounting
- Raised bosses with brass inserts accepting #10-32 screws for optional panel mounting
- Stainless steel beaded cover retention chain
- Workable material cuts, drills, punches and saws with ease and accuracy
- Submersible, non-corrosive environmental design
- Lift-off cover
- Non-conductive, UV-resistant
- 216 lb-in impact resistance per UL746C
- Smooth surface, no color variations, swirls or color pockets, no voids
- Color: Gray

Listings

- UL/cUL File E64358 NEMA Ratings 1, 3R, 4X, 6P, and 12 [UL508A, UL50 and UL50e]
- IEC 60529 Ratings IP66 per UL File E362920
- UL 1741 File E333478
- CSA Std. C22.2 1, 3R, 4X, 6P, and 12 per CSA File LR069014
- Temperature Range (-76°F to +274°F) (-60°C to +134°C)
- Flammability Rating UL94-5V
 - Self-extinguishing
 - Non-halogenated
 - Non-flame propagating
- NFPA No. 101 Flame Spread Class A (1)
- Impact Rating IK10

Certifications

- cULus, IEC, REACH, RoHS
- Outdoor UV Exposure (UL 746C) (f1) Rated



Shipping Schedule

Same day 1 - 5 days 1 - 7 days 1 - 15 days 1 - 20 days

Color indicates shipping lead time in business days.

MachoBox Series Fiberglass Enclosures – Screw Cover

Part Number	Price	Enclosure Overall Size HxWxD	Wt.	Carbon Steel Subpanel	Fiberglass Subpanel	Aluminum Subpanel
M604W	Retired	7.50 x 5.43 x 4.75 [191 x 138 x 121]	2.5 [1.1]	BP64CS	—	BP64A
M606W	Retired	7.50 x 7.50 x 4.75 [191 x 191 x 121]	2.5 [1.1]	BP66CS	—	BP66A
M806W	Retired	9.62 x 7.50 x 4.74 [244 x 191 x 120]	3.2 [1.5]	BP86CS	BP86FG	BP86A
M808W	Retired	9.56 x 9.38 x 4.87 [243 x 238 x 124]	3.4 [1.5]	BP88CS	—	—
M1008W	Retired	11.62 x 9.41 x 4.25 [295 x 239 x 108]	4.0 [1.8]	BP108CS	BP108FG	BP108A
M1008WA*	Retired	11.62 x 9.37 x 5.06 [295 x 238 x 129]	4.1 [1.9]	BP108CS	BP108FG	BP108A
M100806W	Retired	11.97 x 9.42 x 6.50 [304 x 239 x 165]	4.6 [2.1]	BP108CS	BP108FG	BP108A
M1210W	Retired	13.56 x 11.43 x 5.21 [344 x 290 x 132]	5.8 [2.6]	BP1210CS	BP1210FG	BP1210A
M1412W	Retired	15.50 x 13.50 x 6.25 [394 x 343 x 159]	8.4 [3.8]	BP1412CS	BP1412FG	BP1412A
M1614W	Retired	17.53 x 15.46 x 6.23 [445 x 393 x 158]	10.4 [4.7]	BP1614CS	BP1614FG	BP1614A
M1816W	Retired	19.62 x 17.61 x 8.82 [498 x 447 x 224]	17.6 [8.0]	BP1816CS	BP1816FG	BP1816A
M2016W	Retired	22.00 x 17.68 x 8.83 [559 x 449 x 224]	19.9 [9.0]	BPM2016CS	—	BPM2016A

Notes: Subpanels must be ordered separately.
 Dimensions in inches [millimeters].
 Weight in pounds [kilograms].
 *Crowned Cover
 In crowned cover units, the center of the cover is raised 0.75in [19 mm].
 Crowned cover is available only in 10 x 8 x 5 in [254 x 203 x 127 mm] enclosure.

MachoBox Series – Fiberglass Enclosures

Hinged Screw Cover



AttaBox
A ROBROY ENCLOSURES™ BRAND



M1412HW

Construction

- Hot compression molded fiberglass reinforced polyester (thermoset)
- Poured polyurethane seamless gasket provides watertight, dust-tight environmental seal
- 304 stainless used on all external hardware
- Rounded edges, minimal protrusions or exposed pocket area for accumulation of dust or debris
- Molded in flange for easy mounting
- Raised bosses with brass inserts accepting #10-32 screws for optional panel mounting
- Workable material cuts, drills, punches and saw with ease and accuracy
- Submersible, non-corrosive environmental design
- Full length stainless steel hinged cover with two screws
- Full 180° door opening
- Non-conductive, UV-resistant
- 216 lb-in impact resistance per UL746C
- Smooth surface, no color variations, swirls or color pockets, no voids
- Color: Gray

Listings

- UL/cUL File E64358
- NEMA Ratings 1, 3R, 4X, 6P, and 12 [UL508A, UL50 and UL50e]
- IEC 60529 Ratings IP66 per UL File E362920
- UL 1741 File E333478
- CSA Std. C22.2 1, 3R, 4X, 6P, and 12 per CSA File LR069014
- Temperature Range (-76°F to +274°F) (-60°C to +134°C)
- Flammability Rating UL94-5V
 - Self-extinguishing
 - Non-halogenated
 - Non-flame propagating
- NFPA No. 101 Flame Spread Class A (1)
- Impact Rating IK10

Certifications

- cULus, IEC, REACH, RoHS
- Outdoor UV Exposure (UL 746C) (f1) Rated



Shipping Schedule

Same day 1 - 5 days 1 - 7 days 1 - 15 days 1 - 20 days

Color indicates shipping lead time in business days.

MachoBox Series Fiberglass Enclosures – Hinged Screw Cover

Part Number	Price	Enclosure Overall Size HxWxD	Wt.	Carbon Steel Subpanel	Fiberglass Subpanel	Aluminum Subpanel
<u>M604HW</u>	Retired	7.50 x 5.43 x 4.75 [191 x 138 x 121]	2.5 [1.1]	<u>BP64CS</u>	—	<u>BP64A</u>
<u>M606HW</u>	Retired	7.50 x 7.50 x 4.75 [191 x 191 x 121]	2.5 [1.1]	<u>BP66CS</u>	—	<u>BP66A</u>
<u>M806HW</u>	Retired	9.62 x 7.50 x 4.74 [244 x 191 x 120]	3.2 [1.5]	<u>BP86CS</u>	<u>BP86FG</u>	<u>BP86A</u>
<u>M808HW</u>	Retired	11.62 x 9.41 x 4.25 [295 x 239 x 108]	3.4 [1.5]	<u>BP88CS</u>	—	—
<u>M1008HW</u>	Retired	11.62 x 9.37 x 5.06 [295 x 238 x 129]	4.0 [1.8]	<u>BP108CS</u>	<u>BP108FG</u>	<u>BP108A</u>
<u>M1008HWA</u>	Retired	13.56 x 11.43 x 5.21 [344 x 290 x 132]	4.1 [1.9]	<u>BP108CS</u>	<u>BP108FG</u>	<u>BP108A</u>
<u>M100806HW*</u>	Retired	9.56 x 9.38 x 4.87 [243 x 238 x 124]	4.6 [2.1]	<u>BP108CS</u>	<u>BP108FG</u>	<u>BP108A</u>
<u>M1210HW</u>	Retired	15.50 x 13.50 x 6.25 [394 x 343 x 159]	5.8 [2.6]	<u>BP1210CS</u>	<u>BP1210FG</u>	<u>BP1210A</u>
<u>M1412HW</u>	Retired	11.97 x 9.42 x 6.50 [304 x 239 x 165]	8.4 [3.8]	<u>BP1412CS</u>	<u>BP1412FG</u>	<u>BP1412A</u>
<u>M1614HW</u>	Retired	17.53 x 15.46 x 6.23 [445 x 393 x 158]	10.4 [4.7]	<u>BP1614CS</u>	<u>BP1614FG</u>	<u>BP1614A</u>
<u>M1816HW</u>	Retired	19.62 x 17.61 x 8.82 [498 x 447 x 224]	17.6 [8.0]	<u>BP1816CS</u>	<u>BP1816FG</u>	<u>BP1816A</u>
<u>M2016HW</u>	Retired	22.00 x 17.68 x 8.83 [559 x 449 x 224]	19.9 [9.0]	<u>BPM2016CS</u>	—	<u>BPM2016A</u>

Notes: Subpanels must be ordered separately.

Dimensions in inches [millimeters].

Weight in pounds [kilograms].

*Crowned Cover

In crowned cover units, the center of the cover is raised 0.75in [19 mm].

Crowned cover is available only in 10 x 8 x 5 in [254 x 203 x 127 mm] enclosure.

MachoBox Series – Fiberglass Enclosures

Single-Door with Twist-Lock Latches



M1210HLL

Construction

- Hot compression molded fiberglass reinforced polyester (thermoset)
- Poured polyurethane seamless gasket provides watertight, dust-tight environmental seal
- 304 stainless steel used on all external hardware
- Rounded edges, minimal protrusions or exposed pocket area for accumulation of dust or debris
- Molded in flange for easy mounting
- Raised bosses with brass inserts accepting #10-32 screws for optional panel mounting
- Workable material cuts, drills, punches and saws with ease and accuracy
- Full length, stainless steel, hinged cover with twist-lock latches
- Full 180° door opening
- Non-conductive, UV-resistant
- 216 lb-in impact resistance per UL746C
- Smooth surface, no color variations, swirls or color pockets, no voids
- Submersible, non-corrosive environmental design
- Color: Gray

Listings

- UL/cUL File E64358
- NEMA Ratings 1, 3R, 4X, 6P, and 12 [UL508A, UL50 and UL50e]
- IEC 60529 Ratings IP66 per UL File E362920
- UL 1741 File E333478
- CSA Std. C22.2 1, 3R, 4X, 6P, and 12 per CSA File LR069014
- Temperature Range (-76°F to +274°F) (-60°C to +134°C)
- Flammability Rating UL94-5V
 - Self-extinguishing
 - Non-halogenated
 - Non-flame propagating
- NFPA No. 101 Flame Spread Class A (1)
- Impact Rating IK10

Certifications

- cULus, IEC, REACH, RoHS
- Outdoor UV Exposure (UL 746C) (f1) Rated



Shipping Schedule

Same day	1 - 5 days	1 - 7 days	1 - 15 days	1 - 20 days
----------	------------	------------	-------------	-------------

Color indicates shipping lead time in business days.

MachoBox Series Fiberglass Enclosures – Single-Door with Twist-Lock Latches

Part Number	Price	Enclosure Overall Size HxWxD	Wt.	No. Latches	Carbon Steel Subpanel	Fiberglass Subpanel	Aluminum Subpanel
M604HLL	Retired	7.47 x 5.45 x 4.70 [190 x 138 x 119]	2.2 [1.0]	1	BP64CS	—	BP64A
M606HLL	Retired	7.50 x 7.53 x 4.82 [191 x 191 x 122]	2.6 [1.2]	1	BP66CS	—	BP66A
M806HLL	Retired	9.63 x 7.52 x 4.70 [245 x 191 x 119]	3.1 [1.4]	1	BP86CS	BP86FG	BP86A
M808HLL	Retired	9.56 x 9.38 x 4.87 [243 x 238 x 124]	3.3 [1.5]	1	BP88CS	—	—
M1008HLL	Retired	11.63 x 9.41 x 4.22 [295 x 239 x 107]	4.0 [1.8]	2	BP108CS	BP108FG	BP108A
M1008HALL*	Retired	11.63 x 9.37 x 5.08 [295 x 238 x 129]	4.3 [2.0]	2	BP108CS	BP108FG	BP108A
M100806HLL	Retired	11.97 x 9.42 x 6.50 [304 x 239 x 165]	4.6 [2.1]	1	BP108CS	BP108FG	BP108A
M1210HLL	Retired	13.56 x 11.43 x 5.22 [344 x 290 x 133]	5.8 [2.6]	2	BP1210CS	BP1210FG	BP1210A
M1412HLL	Retired	15.50 x 13.48 x 6.20 [394 x 342 x 157]	9.2 [4.2]	2	BP1412CS	BP1412FG	BP1412A
M1614HLL	Retired	17.53 x 15.46 x 6.21 [445 x 393 x 158]	9.5 [4.3]	2	BP1614CS	BP1614FG	BP1614A
M1816HLL	Retired	19.63 x 17.61 x 8.81 [499 x 447 x 224]	17.3 [7.8]	2	BP1816CS	BP1816FG	BP1816A
M2016HLL	Retired	22.00 x 17.68 x 8.81 [559 x 449 x 224]	19.0 [8.6]	2	BPM2016CS	—	BPM2016A

Notes: Subpanels must be ordered separately.
 Dimensions in inches [millimeters].
 Weight in pounds [kilograms].
 *Crowned Cover
 In crowned cover units, the center of the cover is raised 0.75in [19 mm].
 Crowned cover is available only in 10 x 8 x 5 in [254 x 203 x 127 mm] enclosure.

MachoBox Series – Fiberglass Enclosures

Single-Door with Quick-Release Latches



AttaBox
A ROBROY ENCLOSURES™ BRAND



M1210HPL

Construction

- Hot compression molded fiberglass reinforced polyester (thermoset)
- Poured polyurethane seamless gasket provides watertight, dust-tight environmental seal
- 304 stainless steel used on all external hardware
- Rounded edges, minimal protrusions or exposed pocket areas for accumulation of dust or debris
- Molded in flange for easy mounting
- Raised bosses with brass inserts accepting #10-32 screws for optional panel mounting
- Workable material cuts, drills, punches and saws with ease and accuracy
- Full length, stainless steel, hinged cover with padlockable quick-release latches
- Full 180° door opening
- Non-conductive, UV-resistant
- 216 lb-in impact resistance per UL746C
- Smooth surface, no color variations, swirls or color pockets, no voids
- Submersible, non-corrosive environmental design
- Color: Gray

Listings

- UL/cUL File E64358
- NEMA Ratings 1, 3R, 4X, 6P, and 12 [UL508A, UL50 and UL50e]
- IEC 60529 Ratings IP66 per UL File E362920
- UL 1741 File E333478
- CSA Std. C22.2 1, 3R, 4X, 6P, and 12 per CSA File LR069014
- Temperature Range (-76°F to +274°F) (-60°C to +134°C)
- Flammability Rating UL94-5V
 - Self-extinguishing
 - Non-halogenated
 - Non-flame propagating
- NFPA No. 101 Flame Spread Class A (1)
- Impact Rating IK10

Certifications

- cULus, IEC, REACH, RoHS
- Outdoor UV Exposure (UL 746C) (f1) Rated



Shipping Schedule

Same day	1 - 5 days	1 - 7 days	1 - 15 days	1 - 20 days
----------	------------	------------	-------------	-------------

Color indicates shipping lead time in business days.

MachoBox Series Fiberglass Enclosures – Single-Door with Quick-Release Latches

Part Number	Price	Enclosure Overall Size HxWxD	Wt.	No. Latches	Carbon Steel Subpanel	Fiberglass Subpanel	Aluminum Subpanel
<u>M604HPL</u>	Retired	7.50 x 5.43 x 4.75 [191 x 138 x 121]	2.1 [0.95]	1	<u>BP64CS</u>	—	<u>BP64A</u>
<u>M606HPL</u>	Retired	7.50 x 7.50 x 4.75 [191 x 191 x 121]	2.5 [1.1]	1	<u>BP66CS</u>	—	<u>BP66A</u>
<u>M806HPL</u>	Retired	9.62 x 7.50 x 4.74 [244 x 191 x 120]	3.2 [1.5]	1	<u>BP86CS</u>	<u>BP86FG</u>	<u>BP86A</u>
<u>M808HPL</u>	Retired	9.56 x 9.38 x 4.87 [243 x 238 x 124]	3.3 [1.5]	1	<u>BP88CS</u>	—	—
<u>M1008HPL</u>	Retired	11.62 x 9.41 x 4.25 [295 x 239 x 108]	4.1 [1.9]	2	<u>BP108CS</u>	<u>BP108FG</u>	<u>BP108A</u>
<u>M1008HAPL*</u>	Retired	11.62 x 9.37 x 5.06 [295 x 238 x 129]	4.1 [1.9]	2	<u>BP108CS</u>	<u>BP108FG</u>	<u>BP108A</u>
<u>M100806HPL</u>	Retired	11.97 x 9.42 x 6.50 [304 x 239 x 165]	4.6 [2.1]	1	<u>BP108CS</u>	<u>BP108FG</u>	<u>BP108A</u>
<u>M1210HPL</u>	Retired	13.56 x 11.43 x 5.21 [344 x 290 x 132]	5.8 [2.6]	2	<u>BP1210CS</u>	<u>BP1210FG</u>	<u>BP1210A</u>
<u>M1412HPL</u>	Retired	15.50 x 13.50 x 6.25 [394 x 343 x 159]	8.4 [3.8]	2	<u>BP1412CS</u>	<u>BP1412FG</u>	<u>BP1412A</u>
<u>M1614HPL</u>	Retired	17.53 x 15.46 x 6.23 [445 x 393 x 158]	10.0 [4.5]	2	<u>BP1614CS</u>	<u>BP1614FG</u>	<u>BP1614A</u>
<u>M1816HPL</u>	Retired	19.62 x 17.61 x 8.82 [498 x 447 x 224]	18.0 [8.2]	2	<u>BP1816CS</u>	<u>BP1816FG</u>	<u>BP1816A</u>
<u>M2016HPL</u>	Retired	22.00 x 17.68 x 8.83 [559 x 449 x 224]	20.0 [9.0]	2	<u>BPM2016CS</u>	—	<u>BPM2016A</u>
<u>M2020HPL**</u>	Retired	23.50 x 22.12 x 11.70 [597 x 562 x 297]	26.0 [11.8]	4	<u>BPM2020CS</u>	—	<u>BPM2020A</u>
<u>M2420HPL**</u>	Retired	27.50 x 22.12 x 11.70 [699 x 562 x 297]	32.0 [14.5]	4	<u>BPM2420CS</u>	—	<u>BPM2420A</u>
<u>M2424HPL**</u>	Retired	27.50 x 26.12 x 11.70 [699 x 663 x 297]	37.0 [16.8]	4	<u>BPM2424CS</u>	—	<u>BPM2424A</u>
<u>M2430HPL</u>	Retired	26.19 x 32.19 x 12.29 [665 x 818 x 312]	46.0 [20.9]	5	—	—	<u>BPM3024A</u>
<u>M3024HPL</u>	Retired	32.19 x 26.18 x 12.26 [818 x 665 x 311]	46.0 [20.9]	5	—	—	<u>BPM3024A</u>

Notes: Subpanels must be ordered separately.
 Dimensions in inches [millimeters].
 Weight in pounds [kilograms]
 *Crowned Cover
 In crowned cover units, the center of the cover is raised 0.75 in. [19 mm].
 Crowned cover is available only in 10 x 8 x 5 in. [254 x 203 x 127 mm] enclosure.
 **NEMA RATING 13.

MachoBox Series – Fiberglass Enclosures

White Single-Door with Quick-Release Latches



WH-M1412HPL

Construction

- Hot compression molded fiberglass reinforced polyester (thermoset)
- Poured polyurethane seamless gasket provides watertight, dust-tight environmental seal
- 304 stainless used on all external hardware
- Rounded edges, minimal protrusions or exposed pocket area for accumulation of dust or debris
- Molded in flange for easy mounting
- Raised bosses with brass inserts accepting #10-32 screws for optional panel mounting
- Workable material cuts, drills, punches and saw with ease and accuracy
- Submersible, non-corrosive environmental design
- Full length stainless steel hinged cover with padlockable quick-release latches
- Full 180° door opening
- Non-conductive, UV-resistant
- 216 lb-in impact resistance per UL746C
- Smooth surface, no color variations, swirls or color pockets, no voids
- Color: White

Listings

- UL/cUL File E64358
- NEMA Ratings 1, 3R, 4X, 6P, and 12 [UL508A, UL50 and UL50e]
- IEC 60529 Ratings IP66 per UL File E362920
- UL 1741 File E333478
- CSA Std. C22.2 1, 3R, 4X, 6P, and 12 per CSA File LR069014
- Temperature Range (-76°F to +274°F) (-60°C to +134°C)
- Flammability Rating UL94-5V
 - Self-extinguishing
 - Non-halogenated
 - Non-flame propagating
- NFPA No. 101 Flame Spread Class A (1)
- Impact Rating IK10

Certifications

- cULus, IEC, REACH, RoHS Outdoor



Shipping Schedule				
Same day	1 - 5 days	1 - 7 days	1 - 15 days	1 - 20 days
Color indicates shipping lead time in business days.				

MachoBox Series Fiberglass Enclosures – White Single-Door with Quick Release Latches							
Part Number	Price	Enclosure Overall Size HxWxD	Wt.	No. Latches	Carbon Steel Subpanel	Fiberglass Subpanel	Aluminum Subpanel
<u>WH-M604HPL</u>	Retired	7.47 x 5.45 x 4.70 [190 x 138 x 119]	2.1 [0.95]	1	<u>BP64CS</u>	—	<u>BP64A</u>
<u>WH-M606HPL</u>	Retired	7.50 x 7.53 x 4.82 [191 x 191 x 122]	2.4 [1.1]	1	<u>BP66CS</u>	—	<u>BP66A</u>
<u>WH-M806HPL</u>	Retired	9.63 x 7.52 x 4.70 [245 x 191 x 119]	3.1 [1.4]	1	<u>BP86CS</u>	<u>BP86FG</u>	<u>BP86A</u>
<u>WH-M1008HPL</u>	Retired	11.63 x 9.41 x 4.22 [295 x 239 x 107]	4.1 [1.9]	2	<u>BP108CS</u>	<u>BP108FG</u>	<u>BP108A</u>
<u>WH-M1210HPL</u>	Retired	13.56 x 11.43 x 5.22 [344 x 290 x 133]	5.9 [2.7]	2	<u>BP1210CS</u>	<u>BP1210FG</u>	<u>BP1210A</u>
<u>WH-M1412HPL</u>	Retired	15.50 x 13.48 x 6.20 [394 x 342 x 157]	8.7 [3.9]	2	<u>BP1412CS</u>	<u>BP1412FG</u>	<u>BP1412A</u>
<u>WH-M1614HPL</u>	Retired	17.53 x 15.46 x 6.21 [445 x 393 x 158]	10.7 [4.9]	2	<u>BP1614CS</u>	<u>BP1614FG</u>	<u>BP1614A</u>
<u>WH-M1816HPL</u>	Retired	19.63 x 17.61 x 8.81 [499 x 447 x 224]	17.5 [8.0]	2	<u>BP1816CS</u>	<u>BP1816FG</u>	<u>BP1816A</u>
<u>WH-M2016HPL</u>	Retired	22.00 x 17.68 x 8.81 [559 x 449 x 224]	19.8 [9.0]	2	<u>BPM2016CS</u>	—	<u>BPM2016A</u>

Notes: Subpanels must be ordered separately.
 Dimensions in inches [millimeters].
 Weight in pounds [kilograms].

MachoBox Series – Fiberglass Enclosures

Single-Door with Acrylic Window and Twist-Lock Latches



AttaBox
A ROBROY ENCLOSURES™ BRAND



MW1210HLL

Construction

- Hot compression molded fiberglass reinforced polyester (thermoset)
- Poured polyurethane seamless gasket provides watertight, dust-tight environmental seal
- 304 stainless steel used on all external hardware
- Rounded edges, minimal protrusions or exposed pocket area for accumulation of dust or debris
- Molded in flange for easy mounting
- Raised bosses with brass inserts accepting #10-32 screws for optional panel mounting
- Workable material cuts, drills, punches and saws with ease and accuracy
- Scratch- and abrasion-resistant UVA acrylic flush bonded window
- Submersible, non-corrosive environmental design
- Full 180° door opening
- Non-conductive, UV-resistant
- 216 lb-in impact resistance per UL746C
- Smooth surface, no color variations, swirls or color pockets, no voids
- Full length stainless steel hinged cover with twist-lock latches
- Color: Gray

Listings

- UL/cUL File E64358
- NEMA Ratings 1, 3R, 4X, 6P, and 12 [UL508A, UL50 and UL50e]
- IEC 60529 Ratings IP66 per UL File E362920
- UL 1741 File E333478
- CSA Std. C22.2 1, 3R, 4X, 6P, and 12 per CSA File LR069014
- Temperature Range (-76°F to +274°F) (-60°C to +134°C)
- Window Temperature Range: -26°F to 170°F (-32°C to 76°C)
- Flammability Rating UL94-5V Flammability Rating window: UL94V-HB
- Flammability Rating UL94-5V
 - Self-extinguishing
 - Non-halogenated
 - Non-flame propagating
- NFPA No. 101 Flame Spread Class A (1)
- Impact Rating IK10

Certifications

- cULus, IEC, REACH, RoHS
- Outdoor UV Exposure (UL 746C) (f1) Rated



Shipping Schedule

Same day	1 - 5 days	1 - 7 days	1 - 15 days	1 - 20 days
----------	------------	------------	-------------	-------------

Color indicates shipping lead time in business days.

MachoBox Series Fiberglass Enclosures – Single-Door with Acrylic Window and Twist-Lock Latches

Part Number	Price	Enclosure Overall Size HxWxD	Wt.	No. Latches	Carbon Steel Subpanel	Fiberglass Subpanel	Aluminum Subpanel	Drawing Link
<u>MW604HLL</u>	Retired	7.50 x 5.43 x 4.75 [191 x 138 x 121]	2.5 [1.1]	1	<u>BP64CS</u>	—	<u>BP64A</u>	<u>PDF</u>
<u>MW806HLL</u>	Retired	9.62 x 7.50 x 4.74 [244 x 191 x 120]	3.5 [1.6]	1	<u>BP86CS</u>	<u>BP86FG</u>	<u>BP86A</u>	<u>PDF</u>
<u>MW1008HLL</u>	Retired	11.62 x 9.41 x 4.25 [295 x 239 x 108]	5.0 [2.3]	2	<u>BP108CS</u>	<u>BP108FG</u>	<u>BP108A</u>	<u>PDF</u>
<u>MW100806HLL</u>	Retired	11.97 x 9.42 x 6.50 [304 x 239 x 165]	4.6 [2.1]	2	<u>BP108CS</u>	<u>BP108FG</u>	<u>BP108A</u>	<u>PDF</u>
<u>MW1210HLL</u>	Retired	13.56 x 11.43 x 5.21 [344 x 290 x 132]	6.5 [2.9]	2	<u>BP1210CS</u>	<u>BP1210FG</u>	<u>BP1210A</u>	<u>PDF</u>
<u>MW1412HLL</u>	Retired	15.50 x 13.50 x 6.25 [394 x 343 x 159]	8.5 [3.9]	2	<u>BP1412CS</u>	<u>BP1412FG</u>	<u>BP1412A</u>	<u>PDF</u>
<u>MW1614HLL</u>	Retired	17.53 x 15.46 x 6.23 [445 x 393 x 158]	11.5 [5.2]	2	<u>BP1614CS</u>	<u>BP1614FG</u>	<u>BP1614A</u>	<u>PDF</u>
<u>MW1816HLL</u>	Retired	19.62 x 17.61 x 8.82 [498 x 447 x 224]	19.25 [8.73]	2	<u>BP1816CS</u>	<u>BP1816FG</u>	<u>BP1816A</u>	<u>PDF</u>
<u>MW2016HLL</u>	Retired	22.00 x 17.68 x 8.83 [559 x 449 x 224]	20.25 [9.19]	2	<u>BPM2016CS</u>	—	<u>BPM2016A</u>	<u>PDF</u>

Notes: Subpanels must be ordered separately.
Dimensions in inches [millimeters].
Weight in pounds [kilograms].

MachoBox Series – Fiberglass Enclosures

Single-Door with Acrylic Window and Quick-Release Latches



AttaBox
A ROBROY ENCLOSURES™ BRAND



MW604HPL

Construction

- Hot compression molded fiberglass reinforced polyester (thermoset)
- Poured polyurethane seamless gasket provides watertight, dust-tight environmental seal
- 304 stainless steel used on all external hardware
- Rounded edges, minimal protrusions or exposed pocket area for accumulation of dust or debris
- Molded-in flange for easy mounting
- Raised bosses with brass inserts accepting #10-32 screws for optional panel mounting
- Workable material cuts, drills, punches and saws with ease and accuracy
- Scratch- and abrasion-resistant UVA acrylic flush bonded window
- Submersible, non-corrosive environmental design
- Full 180° door opening
- Non-conductive, UV-resistant
- 216 lb-in impact resistance per UL746C
- Smooth surface, no color variations, swirls or color pockets, no voids
- Full length stainless steel hinged cover with padlockable quick-release latches
- Color: Gray

Listings

- UL/cUL File E64358
- NEMA Ratings 1, 3R, 4X, 6P, and 12 [UL508A, UL50 and UL50e]
- IEC 60529 Ratings IP66 per UL File E362920
- UL 1741 File E333478
- CSA Std. C22.2 1, 3R, 4X, 6P, and 12 per CSA File LR069014
- Temperature Range (-76°F to +274°F) (-60°C to +134°C)
- Window Temperature Range: -26°F to 170°F (-32°C to 76°C)
- Flammability Rating UL94-5VFlammability Rating window: UL94V-HB
- Flammability Rating UL94-5V
 - Self-extinguishing
 - Non-halogenated
 - Non-flame propagating
- NFPA No. 101 Flame Spread Class A (1)
- Impact Rating IK10

Certifications

- cULus, IEC, REACH, RoHS
- Outdoor UV Exposure (UL 746C) (f1) Rated



Shipping Schedule

Same day | 1 - 5 days | 1 - 7 days | 1 - 15 days | 1 - 20 days

Color indicates shipping lead time in business days.

MachoBox Series – Fiberglass Enclosures Single-Door with Acrylic Window and Quick-Release Latches

Part Number	Price	Enclosure Overall Size HxWxD	Wt.	No. Latches	Carbon Steel Subpanel	Fiberglass Subpanel	Aluminum Subpanel	Drawing Link
<u>MW604HPL</u>	Retired	7.50 x 5.43 x 4.75 [191 x 138 x 121]	2.5 [1.1]	1	<u>BP64CS</u>	—	<u>BP64A</u>	<u>PDF</u>
<u>MW606HPL</u>	Retired	7.50 x 7.50 x 4.75 [191 x 191 x 121]	2.8 [1.3]	1	<u>BP66CS</u>	—	<u>BP66A</u>	<u>PDF</u>
<u>MW806HPL</u>	Retired	9.62 x 7.50 x 4.74 [244 x 191 x 120]	3.5 [1.6]	1	<u>BP86CS</u>	<u>BP86FG</u>	<u>BP86A</u>	<u>PDF</u>
<u>MW1008HPL</u>	Retired	11.62 x 9.41 x 4.25 [295 x 239 x 108]	5.0 [2.3]	2	<u>BP108CS</u>	<u>BP108FG</u>	<u>BP108A</u>	<u>PDF</u>
<u>MW100806HPL</u>	Retired	11.97 x 9.42 x 6.50 [304 x 239 x 165]	5.3 [2.4]	2	<u>BP108CS</u>	<u>BP108FG</u>	<u>BP108A</u>	<u>PDF</u>
<u>MW1210HPL</u>	Retired	13.56 x 11.43 x 5.21 [344 x 290 x 132]	6.5 [2.9]	2	<u>BP1210CS</u>	<u>BP1210FG</u>	<u>BP1210A</u>	<u>PDF</u>
<u>MW1412HPL</u>	Retired	15.50 x 13.50 x 6.25 [394 x 343 x 159]	8.5 [3.9]	2	<u>BP1412CS</u>	<u>BP1412FG</u>	<u>BP1412A</u>	<u>PDF</u>
<u>MW1614HPL</u>	Retired	17.53 x 15.46 x 6.23 [445 x 393 x 158]	11.5 [5.2]	2	<u>BP1614CS</u>	<u>BP1614FG</u>	<u>BP1614A</u>	<u>PDF</u>
<u>MW1816HPL*</u>	Retired	19.62 x 17.61 x 8.82 [498 x 447 x 224]	19.3 [8.8]	2	<u>BP1816CS</u>	<u>BP1816FG</u>	<u>BP1816A</u>	<u>PDF</u>

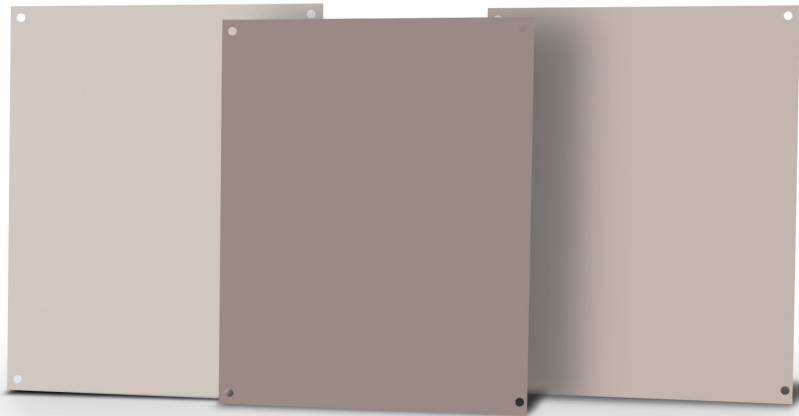
Notes: Subpanels must be ordered separately.

Dimensions in inches [millimeters].

Weight in pounds [kilograms].

*1816 size is not 6P rated.

Subpanels for Freedom, MachoBox and Centurion Series Fiberglass Enclosures



Carbon steel subpanels

- Material: Carbon steel
- Finish: White polyester powder finish

Fiberglass subpanels

- Material: Fiberglass reinforced polyester (FRP)
- Color: Gray

Part Number	Price	Subpanel Size HxWxD	Enclosure Nominal Size HxW	Wt(lb)
BP64CS	—	4.88 x 2.88 x 0.075 [124 x 73 x 1.9]	6 x 4	0.3
BP66CS	—	4.88 x 4.88 x 0.075 [124 x 124 x 1.9]	6 x 6	0.5
BP76CS	Retired	6.00 x 4.88 x 0.075 [152 x 124 x 1.9]	7 x 6	0.6
BP86CS	—	6.75 x 4.88 x 0.075 [152 x 124 x 1.9]	8 x 6	0.8
BP88CS	—	6.88 x 6.88 x 0.075 [175 x 175 x 1.9]	8 x 8	0.8
BP96CS	Retired	8.25 x 4.88 x 0.075 [175 x 124 x 1.9]	9 x 6	0.9
BP108CS	—	8.75 x 6.88 x 0.075 [225 x 175 x 1.9]	10 x 8	1.3
BP1210CS	—	10.88 x 8.75 x 0.075 [276 x 225 x 1.9]	12 x 10	2.1
BP1412CS	—	12.88 x 10.88 x 0.075 [327 x 276 x 1.9]	14 x 12	3.0
BP1614CS	—	14.88 x 12.88 x 0.075 [378 x 327 x 1.9]	16 x 14	4.1
BP1816CS	—	16.88 x 14.88 x 0.075 [429 x 378 x 1.9]	18 x 16	5.4
BPM2016CS	Retired	18.88 x 14.88 x 0.075 [479 x 378 x 1.9]	20 x 16	6.1
BPM2020CS	—	18.00 x 18.00 x 0.105 [457 x 457 x 2.7]	20 x 20	9.4
BPM2420CS	—	22.00 x 18.00 x 0.105 [558 x 457 x 2.7]	24 x 20	11
BPM2424CS	—	22.00 x 22.00 x 0.105 [558 x 558 x 2.7]	24 x 24	22

Note: Dimensions in inches [millimeters].

Part Number	Price	Subpanel Size HxWxD	Enclosure Nominal Size HxW	Wt.(lb)
BP64FG	Retired	4.88 x 2.88 x 0.13 [124 x 73 x 3.2]	6 x 4	0.1
BP66FG	Retired	4.88 x 4.88 x 0.13 [124 x 124 x 3.2]	6 x 6	0.2
BP86FG	—	6.88 x 4.88 x 0.13 [175 x 124 x 3.2]	8 x 6	0.3
BP88FG	—	6.88 x 6.88 x 0.13 [175 x 175 x 3.2]	8 x 8	0.3
BP108FG	—	8.88 x 6.88 x 0.13 [225 x 175 x 3.2]	10 x 8	0.5
BP1210FG	—	10.88 x 8.88 x 0.13 [276 x 225 x 3.2]	12 x 10	0.9
BP1412FG	—	12.88 x 10.88 x 0.13 [327 x 276 x 3.2]	14 x 12	1.0
BP1614FG	—	14.88 x 12.88 x 0.13 [378 x 327 x 3.2]	16 x 14	0.8
BP1816FG	—	16.88 x 14.88 x 0.13 [429 x 378 x 3.2]	18 x 16	2.0
BPM2016FG	Retired	18.88 x 14.88 x 0.13 [479 x 378 x 3.2]	20 x 16	2.2
BPM2020FG	Retired	18.00 x 18.00 x 0.13 [457 x 457 x 3.2]	20 x 20	2.3
BPM2420FG	Retired	22.00 x 18.00 x 0.13 [558 x 457 x 3.2]	24 x 20	2.8
BPM2424FG	Retired	22.00 x 22.00 x 0.13 [558 x 558 x 3.2]	24 x 24	3.5

Note: Dimensions in inches [millimeters].

Subpanels for Freedom, MachoBox and Centurion Series Fiberglass Enclosures

Shipping Schedule

Same day 1 - 5 days 1 - 7 days 1 - 15 days 1 - 20 days

Color indicates shipping lead time in business days.



AttaBox
A ROBROY ENCLOSURES™ BRAND

Aluminum subpanels

- Material: 3003H14 aluminum
- Finish: Mill

Part Number	Price	Subpanel Size HxWxD	Enclosure Nominal Size HxW	Wt. (lb)
BP64A	Retired	4.88 x 2.88 x 0.081 [124 x 73 x 2.0]	6 x 4	0.1
BP66A	—	4.88 x 4.88 x 0.081 [124 x 124 x 2.0]	6 x 6	0.2
BP86A	—	6.88 x 4.88 x 0.081 [175 x 124 x 2.0]	8 x 6	0.3
BP108A	—	8.88 x 6.88 x 0.081 [225 x 175 x 2.0]	10 x 8	0.5
BP1010A	—	8.88 x 8.88 x 0.081 [225 x 225 x 2.0]	10 x 10	4.3
BP1210A	—	10.88 x 8.88 x 0.081 [276 x 225 x 2.0]	12 x 10	0.8
BP1412A	—	12.88 x 10.88 x 0.081 [327 x 276 x 2.0]	14 x 12	1.1
BP1614A	—	14.88 x 12.88 x 0.081 [378 x 327 x 2.0]	16 x 14	1.5
BP1816A	—	16.88 x 14.88 x 0.081 [429 x 378 x 2.0]	18 x 16	2.5
BPM2016A	Retired	18.88 x 14.88 x 0.081 [479 x 378 x 2.0]	20 x 16	2.4
BPM2020A	—	18.00 x 18.00 x 0.129 [457 x 457 x 3.3]	20 x 20	3.7
BPM2420A	—	22.00 x 18.00 x 0.129 [558 x 457 x 3.3]	24 x 20	4.5
BPM2424A	—	22.00 x 22.00 x 0.129 [558 x 558 x 3.3]	24 x 24	5.4
BPM3024A	—	27.00 x 21.00 x 0.129 [686 x 533 x 3.3]	30 x 24	7.0

Note: Dimensions in inches (millimeters).

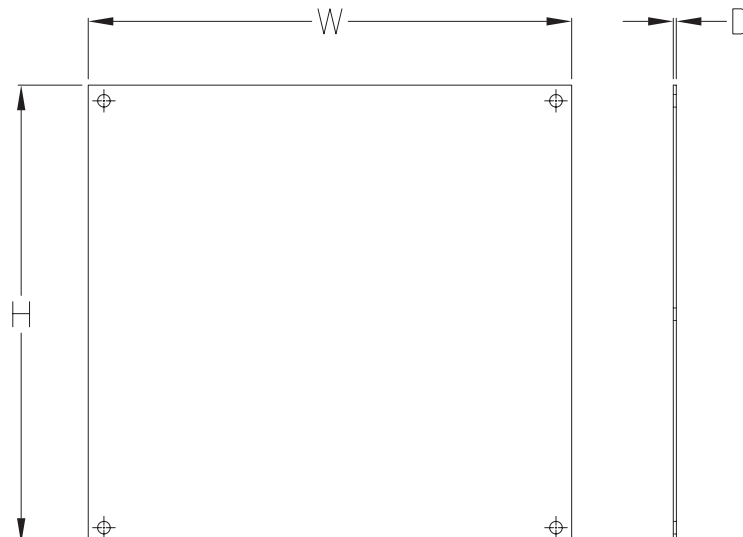


Aluminum swing-out panel

- Swing-out panel with 8 swing-panel mounts
- Works with 30 x 24 in [762 x 610 mm] and 24 x 30 in [610 x 762 mm] MachoBox series enclosures

Part Number	Price	Panel Size HxWxD	Enclosure Nominal Size HxW	Wt. (lb)
M3024SPK	Retired	27.00 x 21.00 X 0.129 [686 X 533 X 3.3]	30 x 24	11

Dimensions



Enclosure Accessories – Hole Seals and Plugs



Hole Plugs for Non-Metal Enclosures

Designed to seal extra pushbutton holes, conduit openings, and knockout openings in AttaBox fiberglass enclosures from dirt, dust, oil, and water. Conduit hole sizes are nominal trade sizes, not actual hole sizes. (Example: 1 in [25 mm] conduit actual diameter = 1.315 in [33.4 mm]).

Shipping Schedule				
Same day	1 - 5 days	1 - 7 days	1 - 15 days	1 - 20 days
Color indicates shipping lead time in business days.				



REHPSERIES1



REHPSERIES3



Hole Plugs for Non-Metal Enclosures				
Hole Plugs	Price	Description	Nominal Hole Diameter Range	Wt [oz]
REHPSERIES1	—	Fiberglass-reinforced polyester (FRP), closed-cell neoprene gasket, for 1/2 to 3/4-inch hole.	0.50 - 0.81 [12.7 - 20.6]	2
REHPSERIES1.5	—	Fiberglass-reinforced polyester (FRP), closed-cell neoprene gasket. For use with 1/2in conduit holes.	0.88 [22.4]	2
REHPSERIES2	—	Fiberglass-reinforced polyester (FRP), closed-cell neoprene gasket, for 1/2- to 3/4-inch conduit holes and 22 or 30mm [1.18 in] pushbutton holes.	0.88 - 1.28 [22.4 - 32.5]	2
REHPSERIES3	—	Fiberglass-reinforced polyester (FRP), closed-cell neoprene gasket, for 1 to 1-1/4 inch conduit holes.	1.38 - 1.75 [35.1 - 44.5]	2
REHPSERIES4	—	Fiberglass-reinforced polyester (FRP), closed-cell neoprene gasket, for 1-1/2 to 2-inch conduit holes.	2.00 - 2.56 [50.1 - 65.0]	2
REHPSERIES5	Retired	Fiberglass-reinforced polyester (FRP), closed-cell neoprene gasket. For use with 2-1/2in conduit holes.	3.00 [76.2]	2
REHPSERIES6	Retired	Fiberglass-reinforced polyester (FRP), closed-cell neoprene gasket. For use with 3in conduit holes.	3.62 [92.0]	2
REHPSERIES7	Retired	Fiberglass-reinforced polyester (FRP), closed-cell neoprene gasket. For use with 3-1/2in conduit holes.	4.12 [104.7]	2
REHPSERIES8	Retired	Fiberglass-reinforced polyester (FRP), closed-cell neoprene gasket. For use with 4in conduit holes.	4.62 [117.4]	2

Note: Dimensions in inches [millimeters].

Agency Approvals

- Fiberglass hole plug for UL 1, 3R, 4, 4X, 6, 6P, 12 Industrial control panel enclosures. [UL File E64358]
- CSA 1, 12, 3, 3R, 4, 4X, 6, 6P:IEC Code IP66, IP67, IP68[CSA File LR069014]



Vents and Louvers for Non-Metallic Enclosures



Drain/Breather Vents



REDVK3KIT



REB4XKIT

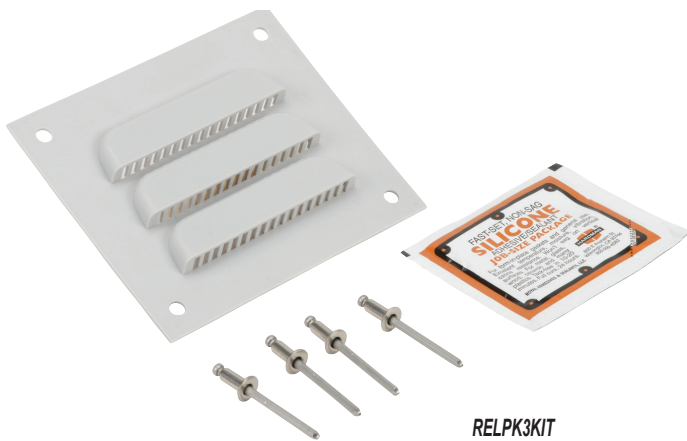


REDV4KIT

Shipping Schedule				
Same day	1 - 5 days	1 - 7 days	1 - 15 days	1 - 20 days
Color indicates shipping lead time in business days.				

Part Number	Price	Description	Wt.[oz]
<u>REDV1PVC</u>	—	AttaBox single drain vent, PVC. For use on non-metallic enclosures. Includes drain vent and silicone adhesive/sealant.	2
<u>REDVK3KIT</u>	—	AttaBox single drain vent kit, PVC. Includes drain vent and silicone adhesive/sealant.	2
<u>REB4XKIT</u>	—	AttaBox single breather vent kit allows enclosure to "breathe" while maintaining UL Type 4X enclosure rating.	4.8
<u>REDV4XKIT</u>	—	AttaBox single drain vent kit properly drains unwanted moisture while maintaining ULType 4X enclosure rating.	3.2

Louver Vent



RELPK3KIT

Part Number	Price	Description	Wt.[oz]
<u>REL1</u>	—	Louver vent, for ventilation in non-metallic enclosure, polypropylene, 4.5 inch wide x 4.0 inch high. For 3 inch x 3 inch cutout.	2
<u>RELPK3KIT</u>	—	Louver vent kit, for ventilation in non-metallic enclosure. Includes 4.5 inch wide x 4.0 inch high polypropylene louver vent, rivets and silicone adhesive/sealant. For 3 inch x 3 inch cutout.	2