

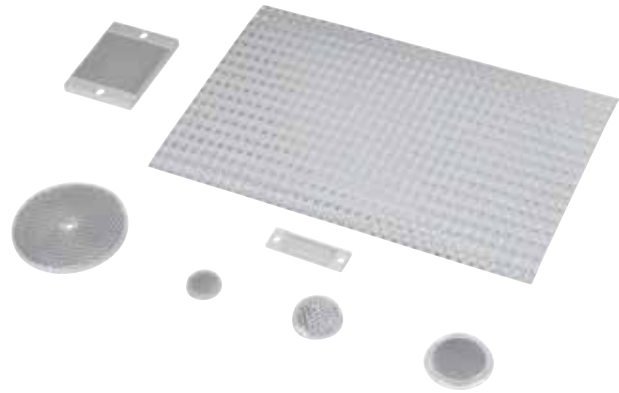
Reflectors

RL Series Reflectors for Polarized Reflective Photoelectric Sensors (All Models)

- Suitable for use with polarized light photoelectric sensors
- Shapes and sizes for most applications
- Miniature types for close mounting in multiple sensor installations
- Single hole, dual hole and self-adhesive mounting types available
- Single and 10-packs available

Installation Notes

- Keep the reflector surface clean to ensure peak detection performance. This is especially true when the maximum sensing range is being used. Clean using a damp cloth.
- When selecting a reflector, it is important to consider the ambient conditions it will be exposed to. Dusty or high humidity conditions may reduce the sensing range as much as 90%.
- Reflectors should be positioned at a 90° angle to the optical axis with a tolerance of $\pm 15^\circ$.



Specifications						
Model	Price	Quantity	Dimensions	Degree of Protection	Mounting	Materials
RL102	\$35.00	10 per pack	25mm [0.98 in]	IEC IP67	Customer-supplied adhesive or other mounting method required	Reflective face: PMMA Polymethylmethacrylate (acrylic) Base material: ABS (Acrylonitrile-butadiene-styren)
RL102-1	\$3.75	1 per pack				
RL103	\$40.00	10 per pack	34.5 mm [1.36 in]			
RL103-1	\$4.25	1 per pack				
RL104	\$40.00	10 per pack	46mm [1.81 in]			
RL104-1	\$4.25	1 per pack				
RL105 *	\$35.00	10 per pack	90 x 40 mm [3.54 x 1.58 in]		Two 4.3 mm holes	
RL105-1 *	\$3.75	1 per pack				
RL105G *	\$35.00	10 per pack	95 x 38 mm [3.74 x 1.50 in]		Two 6mm holes	
RL105G-1 *	\$3.75	1 per pack				
RL106G	\$40.00	10 per pack	182 x 42 mm [7.17 x 1.65 in]		One 5mm hole	
RL106G-1	\$4.25	1 per pack				
RL110	\$18.00	10 per pack	84mm [3.31 in]		Two 3mm holes	
RL110-1	\$2.00	1 per pack				
RL116	\$18.00	10 per pack	41 x 60 mm [3.54 x 2.36 in]		Self-adhesive	
RL116-1	\$2.00	1 per pack				
RL100DA4	\$32.50	1 per pack	200 x 300 mm [7.87 x 11.81 in]		Paper (Acrylic tape with micro prism)	
RL100DC4	\$10.00	1 per pack	50 x 300 mm [1.97 x 11.81 in]			
RL100DQ1	\$7.50	1 per pack	100 x 100 mm [3.94 x 3.94 in]		Two 3mm slots	
RL111G	\$52.00	10 per pack	22.5 x 47 mm [0.89 x 21.85 in]			
RL111G-1	\$6.00	1 per pack				
RL112G	\$40.00	10 per pack	19 x 73 mm [0.75 x 2.87 in]			
RL112G-1	\$4.25	1 per pack		Two 4mm slots		
RL113G	\$46.00	10 per pack	51.4 x 60.3 mm [2.02 x 2.37 in]			
RL113G-1	\$5.00	1 per pack				

Not recommended for applications involving moist air environments or water immersion.

** Note: RL105 and RL105-1 reflectors are being replaced by the RL105G and RL105G-1 models, and will no longer be available once our current stock is depleted.*

The new reflectors function the same but the dimensions are slightly different. Compare the outside dimensions shown in this table and the dimensional drawings on the next page.

Reflectors

RL Series Reflectors for Polarized Reflective Laser Photoelectric Sensors (FALN series)

- Suitable for use with polarized light laser photoelectric sensors
- Sizes for most applications
- Miniature types for close mounting in multiple sensor installations
- Single and 5-packs available

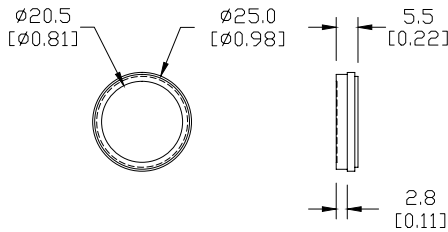
Specifications						
Model	<i>RL201</i>	<i>RL201-1</i>	<i>RL203</i>	<i>RL203-1</i>	<i>RL204</i>	<i>RL204-1</i>
Price	\$32.00	\$7.00	\$30.00	\$6.50	\$26.00	\$5.75
Quantity (per package)	5	1	5	1	5	1
Dimensions	60 x 82 mm 2.36 x 3.23 in		19 x 6mm 0.75 x 2.36 in		20mm x 32mm 0.80 in x 1.26 in	
Degree of Protection ¹	IEC IP67					
Mounting	Two 0.4 mm holes		Two 0.4 mm holes		Two 0.3 mm holes	
Materials	Acrylic/polycarbonate					

¹ Not recommended for applications involving moist air environments or water immersion.

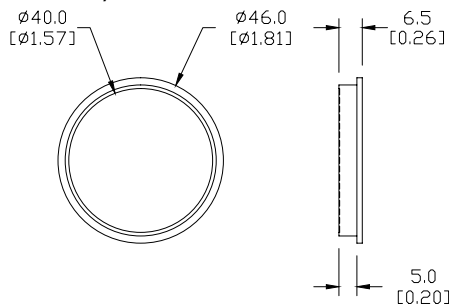
Dimensions

mm [inches]

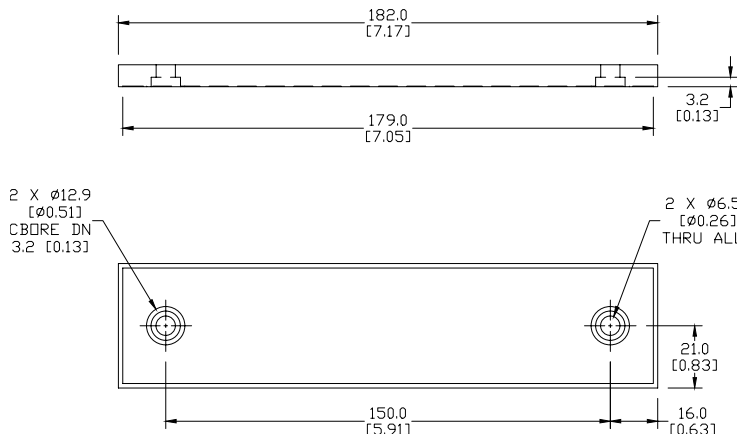
RL102/RL102-1



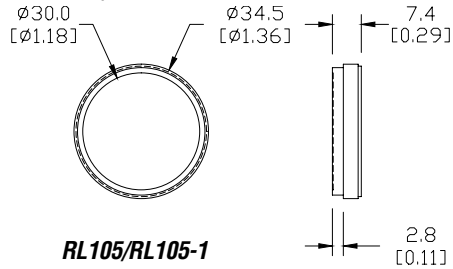
RL104/RL104-1



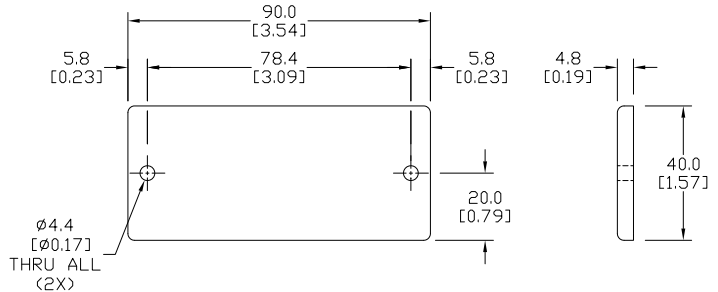
RL106G/RL106G-1



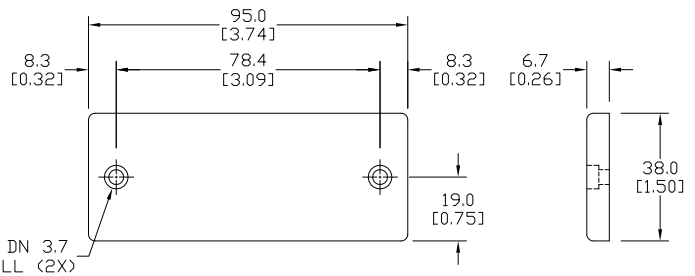
RL103/RL103-1



RL105/RL105-1



RL105G/RL105G-1



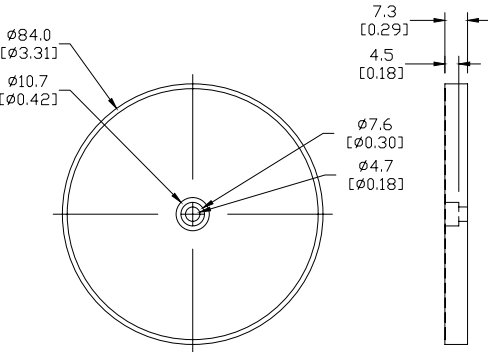
See our website: www.AutomationDirect.com for complete engineering drawings

Reflectors

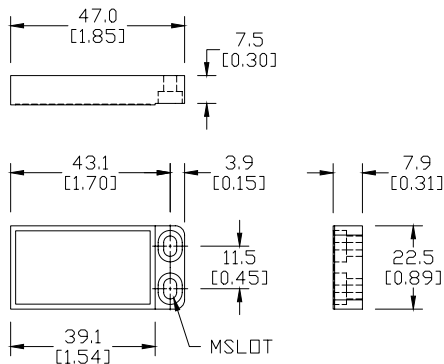
Dimensions

mm [inches]

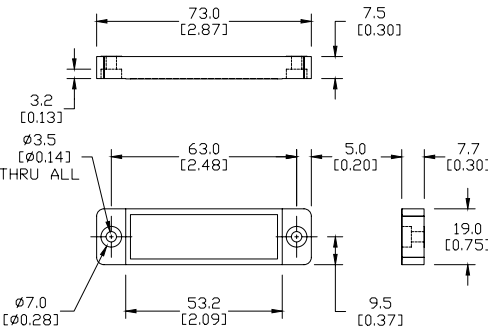
RL110/RL110-1



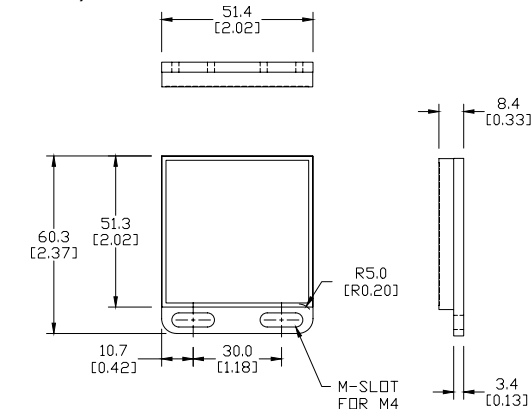
RL111G/RL111G-1



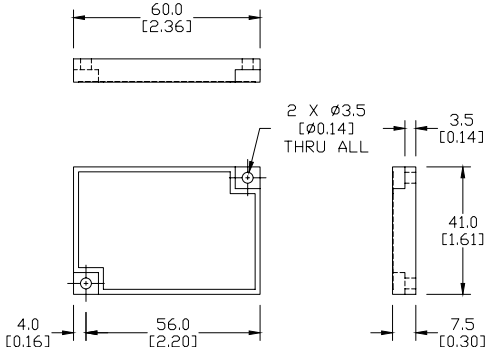
RL112G/RL112G-1



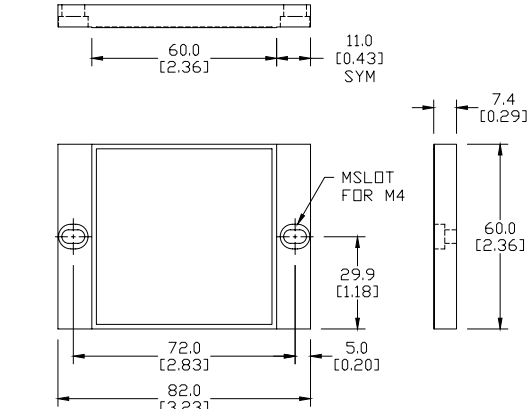
RL113G/RL113G-1



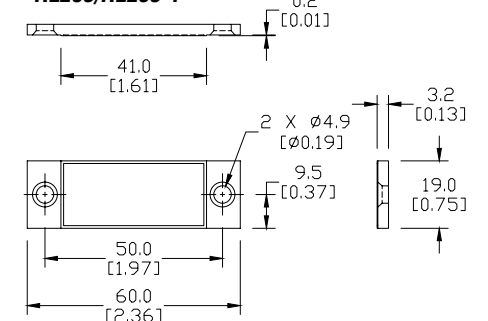
RL116/RL116-1



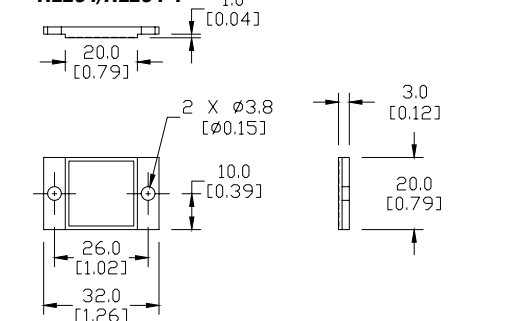
RL201/RL201-1



RL203/RL203-1



RL204/RL204-1



See our website: www.AutomationDirect.com for complete engineering drawings

Reflectors

Reflector for Photoelectric Laser Sensor

Accessories for OPT Series Photoelectric Sensors			
Part Number	Price	Description	Weight [lb]
OPT2030	\$11.00	Reflector, for photoelectric laser sensors, square, 100 x 100 mm. Plastic.	0.20

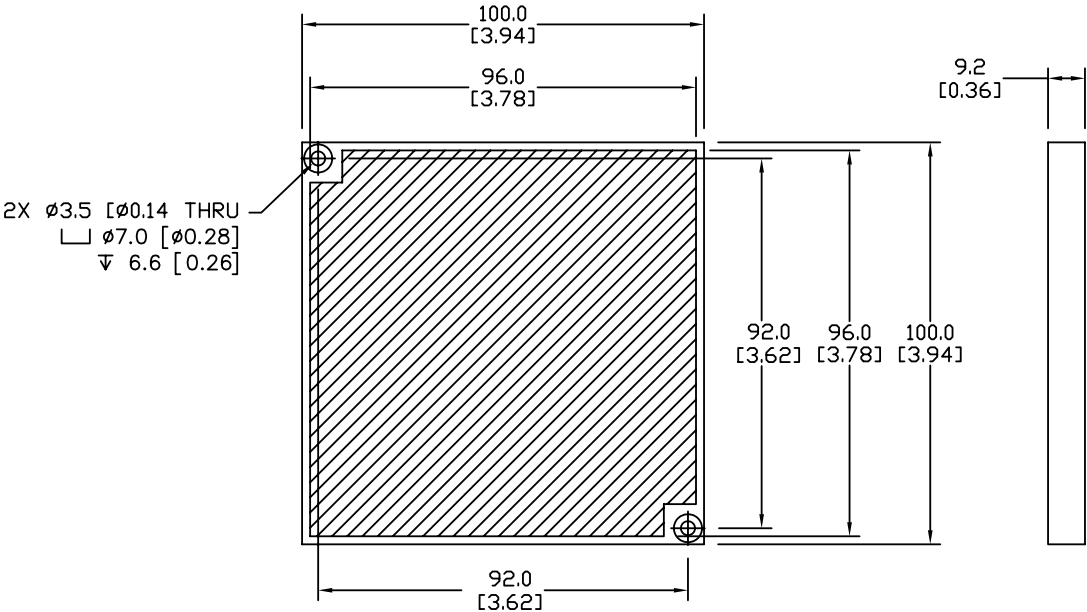
Note: OPT2015 requires purchase of OPT2030 reflector. <50m sensing distance requires 1 reflector. 50-100 m sensing distance requires 4 reflectors.



OPT2030

Dimensions

mm [inches]



See our website: www.AutomationDirect.com for complete engineering drawings