

Quadritalia OK Series Modular Enclosures



Quadritalia's OK Series represents a revolutionary approach to electrical enclosures. Unlike traditional welded cabinets, the OK Series modular system uses an innovative dismantable frame that allows the user to configure exactly what is needed.

Think of it as building blocks for industrial-grade electrical protection. Start with a frame, add the components you need now, and easily expand or reconfigure later as your needs change.

How the System Works

The exploded view diagram shows the four main assembly components that make up every Quadritalia enclosure:

1. Frame Assembly

The foundation of your enclosure comprising the vertical rails and base/roof sets. Made from high-strength galvanized steel profiles with patented corner joints that join together for exceptional rigidity—no welding needed.

2. Subpanel Assembly

Full or partial sized subpanels or optional inner mounting systems (TMK modular frame) let you position equipment anywhere inside the enclosure.

3. Exterior Panels Assembly

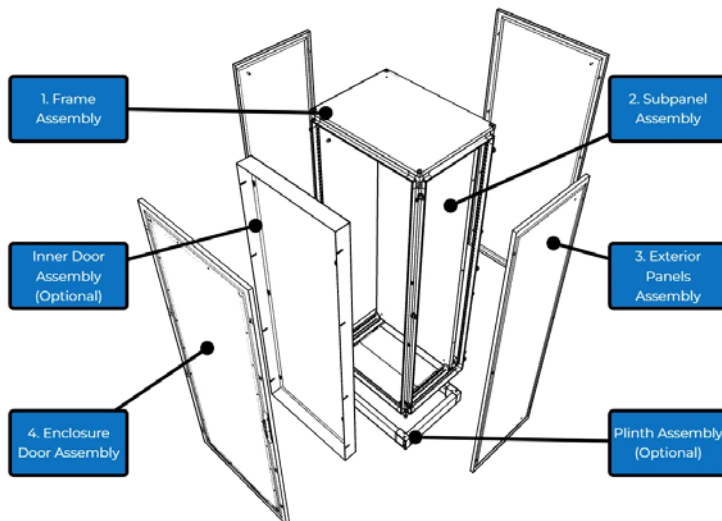
Side panels and rear panels mount to the frame. They can also be removed and another OK Series enclosure join to the side or back to create a multiple bay enclosure.

4. Enclosure Door Assembly

Main access doors with multiple latching points. Add inner doors or side doors for compartmentalized access to different zones within the same enclosure.

5. Plinth Assembly (Optional)

Optional OK Series plinth assemblies raise the enclosure off the floor and provide bottom cable entry access.



Why Choose a Modular System?

Flexibility for Your Project

Configure interior layouts exactly as you need them or create compartments with modular covers and partitions.

Grows as You Grow

Start simple and expand later. Need to add an inner door? More mounting space? Different access points? The modular design means you can upgrade without replacing the entire enclosure.

Cost-Effective Solutions

Buy only what you need today. The flat-pack storage and shipping saves on costs, and the easy assembly means you don't need specialized installation services.

Easy to Modify

Panels can be removed for easier modifications like AC or fan cutouts. Subpanels and partitions can be moved and added as new components require. Perfect for evolving projects or changing equipment needs.

Key Features & Specifications

Innovative Construction

- Sendzimir Galvanized steel profiles
- Patented zamak corner joints
- RAL 7035 powder coat finish

Protection Ratings

- IP55 rated
- IK10 impact resistance
- NEMA Type 12
- UL/CSA certified

Available Options

- Multiple heights, widths & depths
- Opaque or glazed window doors
- Side doors
- Upgraded latch handles



OK Series Base and Roof Sets



Application

Each set provides the base and roof for one OK Series enclosure.

Requires the following compatible components for a completed OK Series enclosure:

- OK Series Enclosure Vertical Rails
- [OK Series Exterior Side Panels](#) or [OK Series Side Doors and Access Panels](#)
- [OK Series Doors](#)
- [OK Series Exterior Rear Panels](#) or additional [OK Series Doors](#)
- Optional internal accessories include: [OK Series Subpanels](#), [OK Series Interior Modular Covers and Panels](#), or [OK Series 19-inch Rack Systems](#)

Features

- Bases have removable flanges for easy cable and wire entry.
- Roof bolts can be replaced with eyebolts (GLF812-K4 for enclosure lifting).
- Base is compatible with [OK Series plinth assemblies](#) for cable ingress and management.
- Vertical rails are connected with included hardware.

*Assembly requires a T30 bit.

Material and Finish

- Sendzimir galvanized frame rails
- Zamak corner joints
- Top panel is RAL7035 light gray textured powder coat finish

Listings

- Fully-assembled OK Series Enclosures are rated as follows:
 - UL 508a Type 12 [UL File E503249]
 - CSA Type 12 [CSA File 115232]
- Complies with
 - NEMA Type 12
 - IEC EN60529 IP55



Easily find compatible OK Series parts for your enclosure using the link button or QR code below:

[Configuration Tool](#)



Base and Roof Sets			
Part Number	Price	Enclosure Size WxD	Drawing Link
OKKTB6040	\$369.00	600 x 400 [23.62 x 15.75]	PDF
OKKTB6060	\$483.00	600 x 600 [23.62 x 23.62]	PDF
OKKTB6080	\$623.00	600 x 800 [23.62 x 31.50]	PDF
OKKTB8040	\$431.00	800 x 400 [31.50 x 15.75]	PDF
OKKTB8060	\$487.00	800 x 600 [31.50 x 23.62]	PDF
OKKTB8080	\$635.00	800 x 800 [31.50 x 31.50]	PDF
OKKTB1040	\$460.00	1000 x 400 [39.37 x 15.75]	PDF
OKKTB1060	\$528.00	1000 x 600 [39.37 x 23.62]	PDF
OKKTB1080	\$695.00	1000 x 800 [39.37 x 31.50]	PDF
OKKTB1240	\$653.00	1200 x 400 [47.24 x 15.75]	PDF
OKKTB1260	\$722.00	1200 x 600 [47.24 x 23.62]	PDF
OKKTB1280	\$930.00	1200 x 800 [47.24 x 31.50]	PDF
Note: Dimensions in millimeters [inches].			



OK Series Enclosure Vertical Rails



Application

Each set provides the vertical structure for one OK Series enclosure.

Requires the following compatible components for a completed OK Series enclosure:

- [OK Series Base and Roof Sets](#)
- [OK Series Exterior Side Panels](#) or [OK Series Side Doors and Access Panels](#)
- [OK Series Doors](#)
- [OK Series Exterior Rear Panels](#) or additional [OK Series Doors](#)
- Optional internal accessories include: [OK Series Subpanels](#), [OK Series Interior Modular Covers and Panels](#), or [OK Series 19-inch Rack Systems](#)

Features

- Package includes four rails.
- Pre-punched holes on interior surfaces accept M6 cage nuts and M5 self-threading screws.

Easily find compatible OK Series parts for your enclosure using the link button or QR code below:

Configuration Tool



Material

- Sendzimir galvanized steel

Listings

- Fully-assembled OK Series Enclosure is rated:
 - UL 508a Type 12 [UL File E503249]
 - CSA Type 12 [CSA File 115232]
- Complies with
 - NEMA Type 12
 - IEC EN60529 IP55



OK Series Enclosure Rails				
Part Number	Price	Qty	Enclosure Height	Drawing Link
MTK180-4	\$286.00	4	1800 [70.87]	PDF
MTK200-4	\$312.00	4	2000 [78.74]	PDF
MTK220-4	\$415.00	4	2200 [86.61]	PDF
Note: Dimensions in millimeters [inches].				

OK Series Exterior Side Panels



Application

Each exterior panel provides two side exterior surfaces for an OK Series enclosure.

Requires the following compatible components for a completed OK Series enclosure:

- [OK Series Enclosure Vertical Rails](#)
- [OK Series Base and Roof Sets](#)
- [OK Series Exterior Side Panels](#) or [OK Series Side Doors and Access Panels](#)
- [OK Series Doors](#)
- [OK Series Exterior Rear Panels](#) or additional [OK Series Doors](#)
- Optional internal accessories include: [OK Series Subpanels](#), [OK Series Interior Modular Covers and Panels](#), or [OK Series 19-inch Rack Systems](#)

Multiple enclosure extensions bayed together can be sealed with a single set of side panels.

Material

- 1.5 mm carbon steel

Finish

- RAL 7035 light gray
- Textured powder coat finish

Features

- Package of two side panels
- Poured-in-place polyurethane gasket
- Includes mounting clips, screws, and gaskets ([CLK013-KIT2F](#))

Listings

- Fully-assembled OK Series Enclosures are rated as follows:
 - UL 508a Type 12 [UL File E503249]
 - CSA Type 12 [CSA File 115232]
- Complies with the following:
 - NEMA Type 12
 - IEC EN60529 IP55



Easily find compatible OK Series parts for your enclosure using the link button or QR code below:

[Configuration Tool](#)



Exterior Side Panels			
Part Number	Price	Fits Enclosure Size HxD	Drawing Link
DLK184	\$104.00	1800 x 400 [70.87 x 15.75]	PDF
DLK186	\$150.00	1800 x 600 [70.87 x 23.62]	PDF
DLK188	\$200.00	1800 x 800 [70.87 x 31.50]	PDF
DLK204	\$114.00	2000 x 400 [78.74 x 15.75]	PDF
DLK206	\$163.00	2000 x 600 [78.74 x 23.62]	PDF
DLK208	\$212.00	2000 x 800 [78.74 x 31.50]	PDF
DLK224	\$130.00	2200 x 400 [86.61 x 15.75]	PDF
DLK226	\$187.00	2200 x 600 [86.61 x 23.62]	PDF
Note: Dimensions in millimeters [inches].			

OK Series Exterior Rear Panels



Application

Each rear exterior panel provides the rear surface for one OK Series enclosure.

Requires the following compatible components for a completed OK Series enclosure:

- [OK Series Enclosure Vertical Rails](#)
- [OK Series Base and Roof Sets](#)
- [OK Series Exterior Side Panels](#) or [OK Series Side Doors and Access Panels](#)
- [OK Series Doors](#)
- Optional internal accessories include: [OK Series Subpanels](#), [OK Series Interior Modular Covers and Panels](#), or [OK Series 19-inch Rack Systems](#)

An additional door may be used in lieu of a rear exterior panel to create a dual access enclosure.

Material

- 2.0 mm carbon steel

Finish

- RAL 7035 light gray
- Textured powder coat finish

Features

- Poured-in-place polyurethane gasket
- Includes mounting clips, screws, and gaskets ([CLK013-KIT2F](#))

Listings

- Fully-assembled OK Series Enclosures are rated as follows:
 - UL 508a Type 12 [UL File E503249]
 - CSA Type 12 [CSA File 115232]
- Complies with the following:
 - NEMA Type 12
 - EC EN60529 IP55



Easily find compatible OK Series parts for your enclosure using the link button or QR code below:

[Configuration Tool](#)



Exterior Rear Panels

Part Number	Price	Fits Enclosure Size HxW	Drawing Link
RPE186	\$114.00	1800 x 600 [70.87 x 23.62]	PDF
RPE188	\$141.00	1800 x 800 [70.87 x 31.50]	PDF
RPE18A	\$169.00	1800 x 1000 [70.87 x 39.37]	PDF
RPE18C	\$195.00	1800 x 1200 [70.87 x 47.24]	PDF
RPE206	\$138.00	2000 x 600 [78.74 x 23.62]	PDF
RPE208	\$158.00	2000 x 800 [78.74 x 31.50]	PDF
RPE20A	\$178.00	2000 x 1000 [78.74 x 39.37]	PDF
RPE20C	\$208.00	2000 x 1200 [78.74 x 47.24]	PDF
RPE226	\$178.00	2200 x 600 [86.61 x 23.62]	PDF
RPE228	\$198.00	2200 x 800 [86.61 x 31.50]	PDF
RPE22A	\$217.00	2200 x 1000 [86.61 x 39.37]	PDF
RPE22C	\$236.00	2200 x 1200 [86.61 x 47.24]	PDF
Note: Dimensions in millimeters [inches].			

OK Series Doors



Easily find compatible OK Series parts for your enclosure using the link button or QR code below:

[Configuration Tool](#)



Application

Each door provides interior access to an OK Series enclosure.

Requires the following compatible components for a completed OK Series enclosure:

- [OK Series Enclosure Vertical Rails](#)
- [OK Series Base and Roof Sets](#)
- [OK Series Exterior Side Panels](#) or [OK Series Side Doors and Access Panels](#)
- [OK Series Exterior Rear Panels](#) or additional [OK Series Doors](#)
- Optional internal accessories include: [OK Series Subpanels](#), [OK Series Interior Modular Covers and Panels](#), or [OK Series 19-inch Rack Systems](#)
- Subpanel

Material

- 2.0 mm carbon steel

Finish

- RAL 7035 light gray
- Textured powder coat finish

Features

- Fully reversible (handle can be oriented on the left or right side)
- 120° opening
- Four hinges
- 3.0 mm double-bar 4-point latch with double-bit key
- Poured-in-place two-component polyurethane gasket, foamed on a perimeter external to the latch points
- Doors include a Sendzimir galvanized inner stiffening frame with Zamak zinc alloy corner pieces

Listings

- Fully-assembled OK Series Enclosures are rated as follows:
 - UL 508a Type 12 [UL File E503249]
 - CSA Type 12 [CSA File 115232]
- Complies with the following:
 - NEMA Type 12
 - IEC EN60529 IP55



Single-Door			
Part Number	Price	Size HxW	Drawing Link
DBE186	\$264.00	1800 x 600 [70.87 x 23.62]	PDF
DBE188	\$318.00	1800 x 800 [70.87 x 31.50]	PDF
DBE18A	\$342.00	1800 x 1000 [70.87 x 39.37]	PDF
DBE206	\$285.00	2000 x 600 [78.74 x 23.62]	PDF
DBE208	\$338.00	2000 x 800 [78.74 x 31.50]	PDF
DBE20A	\$386.00	2000 x 1000 [78.74 x 39.37]	PDF
DBE226	\$408.00	2200 x 600 [86.61 x 23.62]	PDF
DBE228	\$435.00	2200 x 800 [86.61 x 31.50]	PDF
DBE22A	\$474.00	2200 x 1000 [86.61 x 39.37]	PDF
Note: Dimensions in millimeters [inches].			

Double-Door			
Part Number	Price	Size HxW	Drawing Link
DBE18C	\$435.00	1800 x 1200 [70.87 x 47.24]	PDF
DBE20C	\$468.00	2000 x 1200 [78.74 x 47.24]	PDF
DBE22C	\$603.00	2200 x 1200 [86.61 x 47.24]	PDF
Note: Dimensions in millimeters [inches]. Double-door sets consist of a master door and slave door which are packaged separately.			

OK Series Doors with Window



Easily find compatible OK Series parts for your enclosure using the link button or QR code below:

Configuration Tool



Application

Each door provides interior access to an OK Series enclosure.

Requires the following compatible components for a completed OK Series enclosure:

- [OK Series Enclosure Vertical Rails](#)
- [OK Series Base and Roof Sets](#)
- [OK Series Exterior Side Panels](#) or [OK Series Side Doors and Access Panels](#)
- [OK Series Exterior Rear Panels](#) or additional [OK Series Doors](#)
- Optional internal accessories include: [OK Series Subpanels](#), [OK Series Interior Modular Covers and Panels](#), or [OK Series 19-inch Rack Systems](#)

Material

- 2.0 mm carbon steel
- 4.0 mm acrylic window

Finish

- RAL 7035 light gray
- Textured powder coat finish

Features

- Fully reversible
- 120° opening
- Four hinges
- 3.0 mm double-bar 4-point latch with double-bit key
- Poured-in-place two-component polyurethane gasket, foamed on a perimeter external to the latch points
- Doors include a Sendzimir galvanized inner stiffening frame with Zamak zinc alloy corner pieces.

Listings

- Fully-assembled OK Series Enclosures are rated as follows:
 - UL 508a Type 12 [UL File E503249]
 - CSA Type 12 [CSA File 115232]
- Complies with the following:
 - NEMA Type 12
 - IEC EN60529 IP55



Doors with Window			
Part Number	Price	Size HxWxD	Drawing Link
DTE188	\$598.00	1800 x 800 [70.87 x 31.50]	PDF
DTE18A	\$702.00	1800 x 1000 [70.87 x 39.37]	PDF
DTE208	\$676.00	2000 x 800 [78.74 x 31.50]	PDF
DTE20A	\$790.00	2000 x 1000 [78.74 x 39.37]	PDF
DTE186	\$510.00	1800 x 600 [70.87 x 23.62]	PDF
DTE206	\$573.00	2000 x 600 [78.74 x 23.62]	PDF
DTE226	\$651.00	2200 x 600 [86.61 x 23.62]	PDF
DTE228	\$765.00	2200 x 800 [86.61 x 31.50]	PDF
DTE22A	\$895.00	2200 x 1000 [86.61 x 39.37]	PDF
Note: Dimensions in millimeters [inches].			



OK Series Side Doors and Access Panels



Application

Side access doors provide additional entry points to OK Series enclosures, ideal for installations where front and rear access is limited or when creating multi-compartment systems. Side doors mount to the enclosure side panels using included hardware and feature the same security and sealing features as front doors.

Multi-Access Configurations:

- Side doors replace standard side panels (DLKxxx part numbers)
- Side doors can be combined with front doors for dual-access enclosures
- Side doors can be used on both sides for tri-access configurations
- Side doors cannot be installed on bayed enclosure joints

Depth Matching:

- Side door width must match enclosure depth dimension
- Example: 600 mm deep enclosure requires FPKxx6 door (where xx = height code)

Material

- 2.0 mm carbon steel

Finish

- RAL 7035 light gray
- Textured powder coat finish

Features

- Hinges on right-hand side
- 180° opening angle
- Three hinges for stability
- 3.0 mm double-bar 4-point latch with double-bit key
- Poured-in-place two-component polyurethane gasket
- Inner stiffening frame with Zamak zinc alloy corner pieces
- Includes mounting hardware
- (1) Yale-type key included






Listings

- Fully-assembled with side doors maintain enclosure ratings:
 - UL 508a Type 12 [UL File E503249]
 - CSA Type 12 [CSA File 115232]
- Complies with:
 - NEMA Type 12
 - IEC EN60529 IP55

Side Doors			
Part Number	Price	Door Size HxD	Drawing Link
FPK184	\$301.00	1800 x 400 [70.87 x 15.75]	PDF
FPK186	\$319.00	1800 x 600 [70.87 x 23.62]	PDF
FPK188	\$373.00	1800 x 800 [70.87 x 31.50]	PDF
FPK204	\$332.00	2000 x 400 [78.74 x 15.75]	PDF
FPK206	\$339.00	2000 x 600 [78.74 x 23.62]	PDF
FPK208	\$393.00	2000 x 800 [78.74 x 31.50]	PDF
FPK224	\$427.00	2200 x 400 [86.61 x 15.75]	PDF
FPK226	\$463.00	2200 x 600 [86.61 x 23.62]	PDF
FPK228	\$490.00	2200 x 800 [86.61 x 31.50]	PDF
Note: Dimensions in millimeters [inches].			



OK Series Door Control Hardware

Door Control Hardware				
Part Number	Price	Description	Image	Drawing Link
<u>BCK100-M</u>	\$77.00	Quadritalia mechanical interlock allows opening of one door only after main door has been opened. For use with OK series enclosures.		PDF
<u>BCO170-M</u>	\$123.00	Quadritalia mechanical interlock allows closing of one door only after main door has been closed. For use with OK series enclosures.		PDF
<u>BCO110-M</u>	\$77.00	Quadritalia door stay, carbon steel. For use with OK series enclosures.		PDF
<u>MIC250</u>	\$84.00	Quadritalia door switch, (3) N.C. contact(s), screw terminal.		PDF
<u>MIC250-S</u>	\$27.50	Quadritalia door switch mounting bracket, galvanized steel. For use with MIC250 door switch.		PDF

OK Series Subpanels



Easily find compatible OK Series parts for your enclosure using the link button or QR code below:

[Configuration Tool](#)



Application

Provides the primary subpanel for an OK Series enclosure.

Requires the following compatible components for a completed OK Series enclosure:

- [OK Series Enclosure Vertical Rails](#)
- [OK Series Base and Roof Sets](#)
- [OK Series Exterior Side Panels](#) or [OK Series Side Doors and Access Panels](#)
- [OK Series Doors](#)
- [OK Series Exterior Rear Panels](#) or additional [OK Series Doors](#)

Subpanel can be mounted at variable depths or flush mounted. Multiple subpanels can be used in a Dual access enclosure.

Subpanels may also be recess mounted on one or both sides for use as side-mounted panels or to form a barrier between two adjacent bays. For side-mount applications, match subpanel nominal width to enclosure depth.

APK110 (sold separately) required for all recess mounting applications

Material

- 2.5 mm Sendzimir galvanized steel

Features

- Includes installation hardware ([PPK100](#)).



Subpanels

Part Number	Price	Fits Enclosure Size HxW	Drawing Link
PNA186	\$127.00	1800 x 600 [70.87 x 23.62]	PDF
PNA188	\$146.00	1800 x 800 [70.87 x 31.50]	PDF
PNA18A	\$167.00	1800 x 1000 [70.87 x 39.37]	PDF
PNA18C	\$192.00	1800 x 1200 [70.87 x 47.24]	PDF
PNA206	\$143.00	2000 x 600 [78.74 x 23.62]	PDF
PNA208	\$176.00	2000 x 800 [78.74 x 31.50]	PDF
PNA20A	\$205.00	2000 x 1000 [78.74 x 39.37]	PDF
PNA20C	\$237.00	2000 x 1200 [78.74 x 47.24]	PDF
PNA226	\$168.00	2200 x 600 [86.61 x 23.62]	PDF
PNA228	\$211.00	2200 x 800 [86.61 x 31.50]	PDF
PNA22A	\$260.00	2200 x 1000 [86.61 x 39.37]	PDF
PNA22C	\$304.00	2200 x 1200 [86.61 x 47.24]	PDF
Note: Dimensions in millimeters [inches].			

OK Series Swing Panels



Application

Provides an interior mounting surface just behind the exterior door. Panel can swing open to allow access to the interior of the enclosure.

Material

- 2.0 mm carbon steel

Finish

- RAL 7035 light gray
- Textured powder coat finish

Features

- Includes hinges, screws, and bolts
- Zinc alloy corner pieces.
- 110° swing radius

Listings

- IP44



Easily find compatible OK Series parts for your enclosure using the link button or QR code below:

[Configuration Tool](#)



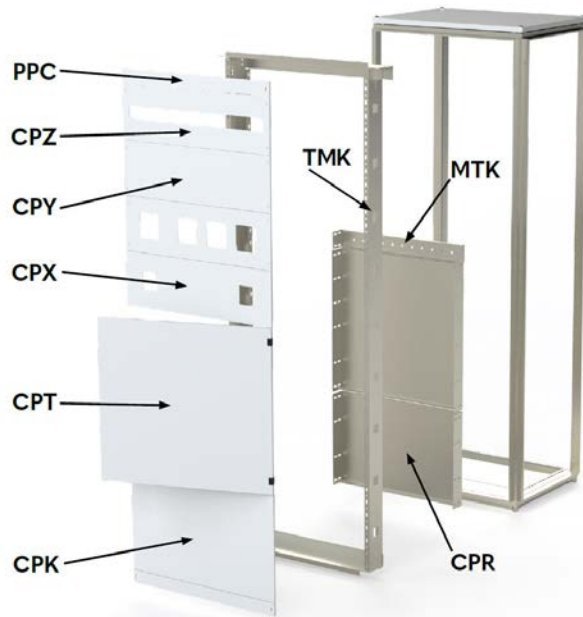
Swing Panels			
Part Number	Price	Fits Enclosure Size HxW	Drawing Link
DBI186	\$292.00	1800 x 600 [70.87 x 23.62]	PDF
DBI188	\$343.00	1800 x 800 [70.87 x 31.50]	PDF
DBI18A	\$404.00	1800 x 1000 [70.87 x 39.37]	PDF
DBI206	\$336.00	2000 x 600 [78.74 x 23.62]	PDF
DBI208	\$395.00	2000 x 800 [78.74 x 31.50]	PDF
DBI20A	\$457.00	2000 x 1000 [78.74 x 39.37]	PDF
DBI226	\$390.00	2200 x 600 [86.61 x 23.62]	PDF
DBI228	\$442.00	2200 x 800 [86.61 x 31.50]	PDF
DBI22A	\$546.00	2200 x 1000 [86.61 x 39.37]	PDF

Note: Dimensions in millimeters [inches].

Swing panels kits consist of a panel and a mounting frame; each packaged separately.



OK Series Interior Modular Covers and Panels



Easily find compatible OK Series parts for your enclosure using the link button or QR code below:

Configuration Tool

Interior Modular Covers and Panels						
Part Number	Price	Fits Inner Modular Frame	Height	Number of Cutouts	Cutout Size	Drawing Link
PPC						
PPC560	\$35.00	TMKxx6	50.00mm	N/A	N/A	PDF
PPC860	\$44.00		50.00mm			PDF
CPY						
CPY560	\$31.00	TMKxx6	198.00mm	N/A	N/A	PDF
CPY860	\$38.50	TMKxx8	198.00mm			PDF
CPK						
CPK561	\$46.00	TMKxx6	398.00mm	N/A	N/A	PDF
CPK861	\$55.00	TMKxx8	398.00mm			PDF
CPT						
CPT560	\$59.00	TMKxx6	598.00mm	N/A	N/A	PDF
CPT860	\$74.00	TMKxx8	598.00mm			PDF
CPZ						
CPZ5422	\$38.50	TMKxx6	198.00mm	1	47 x 430mm [1.85 x 16.93in]	PDF
CPZ8422	\$48.00	TMKxx8	198.00mm		47 x 630mm [1.85 x 24.80in]	PDF
CPX						
CPX5272	\$40.50	TMKxx6	198.00mm	2	67 x 67mm [2.64 x 2.64in]	PDF
CPX5296	\$40.50		198.00mm		92 x 92mm [3.62 x 3.62in]	PDF
CPX5472	\$42.50		198.00mm	4	67 x 67mm [2.64 x 2.64in]	PDF
CPX8272	\$49.50	TMKxx8	198.00mm	2		PDF
CPX8296	\$49.50		198.00mm		92 x 92mm [3.62 x 3.62in]	PDF
CPX8472	\$53.00		198.00mm	4	67 x 67mm [2.64 x 2.64in]	PDF
CPX8496	\$55.00		198.00mm		92 x 92mm [3.62 x 3.62in]	PDF
Note: Dimensions in millimeters [inches].						

Application

Interior modular covers and panels provide flexible mounting solutions and operator protections within OK Series enclosures. These components can be mounted within the enclosure to create modular compartments, equipment mounting surfaces, and cable management solutions. Covers and Panels require TMK inner modular frames and OK Series vertical rails.

Material

- 2.0 mm carbon steel (covers)
- 2.5 mm Sendzimir galvanized steel (compensation panels)

Finish

- RAL 7035 light gray
- Textured powder coat finish

Features

- Pre-punched mounting holes for M6 cage nuts
- Multiple cutout configurations for equipment mounting
- Compatible with standard 67 mm and 92 mm device cutouts
- Gaskets included where applicable

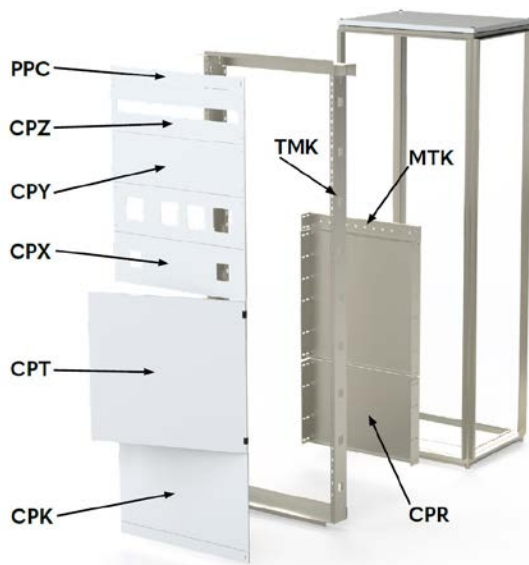
Listings

- IP44 (when properly installed with PPC panels at top and bottom)





OK Series Interior Modular Frames



Inner Modular Frame Kits

Application

The TMK inner modular frame system creates an independent mounting structure within the OK Series enclosure. This system allows for flexible positioning of modular covers, adjustable mounting plates, and equipment panels at various depths. The frame consists of vertical uprights and horizontal rails that mount to the OK Series frame elements using cage nuts.

Features

- Creates independent mounting plane within enclosure
- Accepts modular covers (CPK, CPT, CPX, CPY, CPZ series)
- Compatible with adjustable mounting plates (CPR series)
- Includes mounting hardware

Material

- 2.5 mm cold-rolled steel

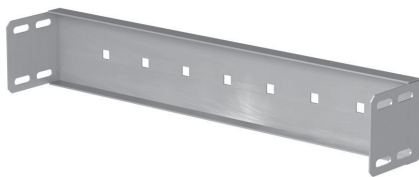
Finish

- Galvanized Steel

Inner Modular Frame Kits			
Part Number	Price	Fits Enclosure	Drawing Link
TMK186	\$182.00	1800 x 600mm OK series	PDF
TMK188	\$202.00	1800 x 800mm OK series	PDF
TMK206	\$195.00	2000 x 600mm OK series	PDF
TMK208	\$215.00	2000 x 800mm OK series	PDF
TMK226	\$210.00	2200 x 600mm OK series	PDF
TMK228	\$228.00	2200 x 800mm OK series	PDF

Adjustable Modular Mounting Plates					
Part Number	Price	Fits Inner Modular Frame	Width	Height	Drawing Link
CPR602	\$46.00	TMKxx6	425.00 [16.73]	194.00 [7.64]	PDF
CPR603	\$59.00			294.00 [11.57]	PDF
CPR604	\$66.00			394.00 [15.51]	PDF
CPR605	\$83.00			494.00 [19.45]	PDF
CPR606	\$90.00			594.00 [23.39]	PDF
CPR802	\$55.00	TMKxx8	625.00 [24.61]	194.00 [7.64]	PDF
CPR803	\$72.00			294.00 [11.57]	PDF
CPR804	\$79.00			394.00 [15.51]	PDF
CPR805	\$97.00			494.00 [19.45]	PDF
CPR806	\$105.00			594.00 [23.39]	PDF

Note: Dimensions in millimeters [inches].



DIN Rail Support Brackets				
Part Number	Price	Fits Enclosure	Length	Drawing Link
MTK600	\$31.00	600mm width TMK inner modular frame	425 [16.73]	PDF
MTK800	\$35.00	800mm width TMK inner modular frame	625 [24.61]	PDF

Note: Dimensions in millimeters [inches].

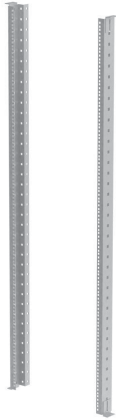


DIN Rail			
Part Number	Price	Length	Drawing Link
CPP344	\$20.00	170 (6.69)	PDF
CPP444	\$20.00	270 (10.63)	PDF
CPP544	\$22.00	370 (14.57)	PDF
CPP644	\$22.00	490 (19.29)	PDF
CPP844	\$27.50	690 (27.17)	PDF

Note: Dimensions in millimeters [inches].



OK Series 19-inch Rack Systems



Easily find compatible OK Series parts for your enclosure using the link button or QR code below:

Configuration Tool



Application

Fixed 19-inch rack uprights provide standard EIA-310-D compliant equipment mounting within OK Series enclosures. The system uses horizontal mounting rails on non 600mm wide enclosures (STR-T series, sold separately) that attach to the OK Series frame elements, with vertical rack uprights mounting to these rails. Suitable for mounting servers, network equipment, and standard 19-inch rackmount devices.

Material

- Vertical uprights: 2.5 mm cold-rolled steel
- Horizontal rails (STR-T): Sendzimir galvanized steel

Finish

- RAL 7035 light gray
- Textured powder coat finish

Features

- EIA-310-D compliant square hole mounting pattern
- Adjustable depth positioning
- Includes fixing brackets and hardware
- Compatible with all standard 19-inch rack equipment
- Pre-punched for M6 cage nuts
- Rack unit capacity
 - STR180K: Up to 36U
 - STR200K: Up to 42U
 - STR220K: Up to 47U
- Load capacity up to 200 kg (440 lbs) per rack when properly installed

Listings

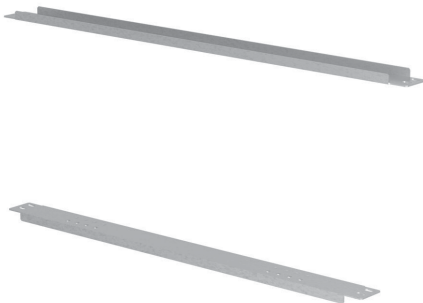
- IP44 (when properly installed)



Fixed Rack Rail Kits				
Part Number	Price	Fits Enclosure	Includes	Drawing Link
STR180K	\$118.00	1800mm height OK Series	(2) vertical rack uprights with square hole pattern (4) fixing brackets Installation hardware Assembly instructions	PDF
STR200K	\$131.00	2000mm height OK Series		PDF
STR220K	\$153.00	2200mm height OK Series		PDF

Application

Horizontal rails provide the mounting interface between the OK Series frame and the fixed 19-inch rack uprights. The horizontal rails have variable cutouts allowing for different rack mount sizes. Two rails are required per rack installation (top and bottom). Enclosures 600mm wide do not require horizontal mounting rails.



Horizontal Mounting Rails				
Part Number	Price	Fits Enclosure	Includes	Drawing Link
STR800-T	\$153.00	800mm width OK Series	(8) flanged cage nuts (per pair of rails) (8) M6 x 16 hex screws (8) M6 washers	PDF
STR1000-T	\$189.00	1000mm width OK Series		PDF



OK Series 19-inch Rack Systems



Rack Mounting Swing Frame				
Part Number	Price	Fits Enclosure	Includes	Drawing Link
<u>TRI188</u>	\$474.00	1800 x 800mm OK series	(1) swinging rack frame with square hole pattern (1) top mounting rail (1) bottom mounting rail (with 90° support flange)	<u>PDF</u>
<u>TRI208</u>	\$522.00	2000 x 800mm OK series	(4) conic pins (4) M6 nuts (8) cage nuts	<u>PDF</u>
<u>TRI228</u>	\$570.00	2200 x 800mm OK series	(8) M6 x 16 hex screws (12) M6 washers Assembly instructions	<u>PDF</u>

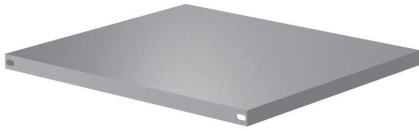


OK Series Inner Partitions

Horizontal Inner Partitions

Application

Horizontal inner partitions divide the enclosure into separate upper and lower compartments. Partitions mount directly to the OK Series vertical frame rails using included hardware. Ideal for separating different voltage systems, creating equipment zones, or improving cable management.



Features

- Direct mount to OK Series frame rails
- Creates sealed compartments when properly installed
- Pre-punched mounting holes
- Mounting hardware included
- Can be combined with vertical partitions

Material

- 2.5 mm Sendzimir galvanized steel

Horizontal Inner Partitions			
Part Number	Price	Fits Enclosure	Drawing Link
SOAK606	\$95.00	600 x 600mm (W x D) OK series	PDF
SOAK804	\$96.00	800 x 400mm (W x D) OK series	PDF
SOAK806	\$115.00	800 x 600mm (W x D) OK series	PDF
SOAK808	\$149.00	800 x 800mm (W x D) OK series	PDF

Vertical Inner Partitions

Application

Vertical inner partitions create side-by-side compartments within a single enclosure or can be used to separate two enclosures coupled side-by-side.



Features

- Non-sealed version for basic compartmentalization
- Mounts to OK Series vertical frame rails
- Can be combined with horizontal partitions
- Pre-punched mounting holes
- Mounting hardware included

Material

- 2.5 mm Sendzimir galvanized steel

Vertical Inner Partitions			
Part Number	Price	Fits Enclosure	Drawing Link
SVNK184	\$143.00	1800 x 400mm (H x D) OK series	PDF
SVNK186	\$163.00	1800 x 600mm (H x D) OK series	PDF
SVNK188	\$178.00	1800 x 800mm (H x D) OK series	PDF
SVNK204	\$166.00	2000 x 400mm (H x D) OK series	PDF
SVNK206	\$200.00	2000 x 600mm (H x D) OK series	PDF
SVNK208	\$217.00	2000 x 800mm (H x D) OK series	PDF
SVNK226	\$225.00	2200 x 600mm (H x D) OK series	PDF
SVNK228	\$239.00	2200 x 800mm (H x D) OK series	PDF



OK Series Plinths

**ZAK081****ZAK082**

Description

Components for custom-designed plinths for OK Series enclosures.

Material

- 2.0 mm carbon steel

Finish

- RAL 7024 graphite gray
- Textured powder coat finish

Features

- Both front/rear plates and side flanges are sold in pairs.
- Mix and match front/rear plates and side flanges to match enclosure WxD dimensions.
- Use two sets of 100 mm [3.94 in] height side flanges with 200 mm [7.87 in] height front/rear plate sets.
- Plinth assemblies can be stacked to form greater plinth heights.



Easily find compatible OK Series parts for your enclosure using the link button or QR code below:

Configuration Tool



View assembly guide with the link button or QR code below:

Assembly Guide



Plinth Front and Rear Plate Sets

Part Number	Price	Size HxW	Drawing Link
ZAK061	\$82.00	100 x 600 [3.94 x 23.62]	PDF
ZAK062	\$164.00	200 x 600 [7.87 x 23.62]	PDF
ZAK081	\$105.00	100 x 800 [3.94 x 31.50]	PDF
ZAK082	\$210.00	200 x 800 [7.87 x 31.50]	PDF
ZAK0A1	\$120.00	100 x 1000 [3.94 x 39.37]	PDF
ZAK0A2	\$241.00	200 x 1000 [7.87 x 39.37]	PDF
ZAK0C1	\$123.00	100 x 1200 [3.94 x 47.24]	PDF
ZAK0C2	\$245.00	200 x 1200 [7.87 x 47.24]	PDF

Note: Dimensions in millimeters [inches].

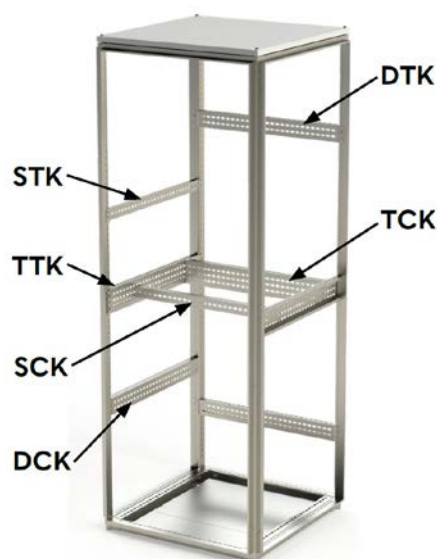
**FLK16**

Plinth Side Flanges

Part Number	Price	Size HxD	Drawing Link
FLK14	\$6.50	100 x 400 [3.94 x 15.75]	PDF
FLK16	\$8.50	100 x 600 [3.94 x 23.62]	PDF
FLK18	\$9.75	100 x 800 [3.94 x 31.50]	PDF
FLK24	\$13.00	200 x 400 [7.87 x 15.75]	PDF
FLK26	\$17.00	200 x 600 [7.87 x 23.62]	PDF
FLK28	\$19.00	200 x 800 [7.87 x 31.50]	PDF

Note: Dimensions in millimeters [inches].

OK Series Mounting Profiles



Application

Mounting profiles create additional mounting positions at any location inside the OK Series enclosure. They can be connected to the inner frame rails or span between other mounting profiles in either vertical or horizontal orientation. Multiple profile heights available to suit different equipment mounting requirements.

Material

- Sendzimir galvanized steel

Features

- Pre-punched holes accept M6 cage nuts and M5 self-threading screws
- Can be oriented vertically or horizontally
- Direct mounting to OK Series frame rails
- Multiple lengths to match enclosure dimensions



SCK Closed-End Mounting Channels

Part Number	Price	Fits Enclosure	Length	Drawing Link
SCK407	\$18.50	400mm width/depth	302 [11.89]	PDF
SCK607	\$22.00	600mm width/depth	502 [19.76]	PDF
SCK807	\$24.00	800mm width/depth	702 [27.64]	PDF
SCKA07	\$30.50	1000mm width/depth	902 [35.51]	PDF
SCKC07	\$37.00	1200mm width	1102 [43.39]	PDF

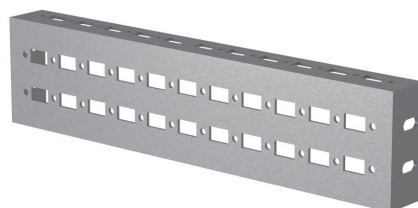
Note: Dimensions in millimeters [inches].



STK Flanged Mounting Channels

Part Number	Price	Fits Enclosure	Length	Drawing Link
STK445	\$18.50	400mm width/depth	300 [11.81]	PDF
STK645	\$22.00	600mm width/depth	500 [19.69]	PDF
STK845	\$24.00	800mm width/depth	700 [27.56]	PDF
STKA45	\$30.50	1000mm width/depth	900 [35.43]	PDF

Note: Dimensions in millimeters [inches].



DCK Series Mounting Profile

Part Number	Price	Fits Enclosure	Length	Drawing Link
DCK407	\$45.50	400mm width/depth OK Series	302 [11.89]	PDF
DCK607	\$68.00	600mm width/depth OK Series	502 [19.76]	PDF
DCK807	\$77.00	800mm width/depth OK Series	702 [27.64]	PDF
DCKA07	\$90.00	1000mm width/depth OK Series	902 [35.51]	PDF
DCKC07	\$97.00	1200mm width/depth OK Series	1102 [43.39]	PDF

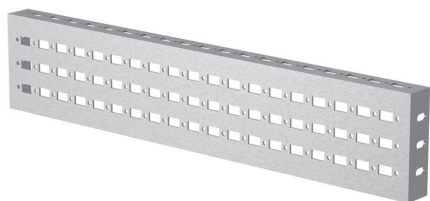
Note: Dimensions in millimeters [inches].

OK Series Mounting Profiles



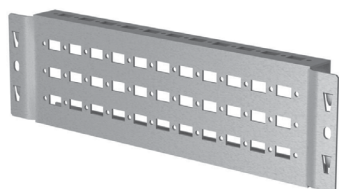
DTK Series Mounting Profile				
Part Number	Price	Fits Enclosure	Length	Drawing Link
<u>DTK870</u>	\$52.00	800mm width/depth OK Series	700 [27.56]	<u>PDF</u>

Note: Dimensions in millimeters [inches].



TCK Series Mounting Profile				
Part Number	Price	Fits Enclosure	Length	Drawing Link
<u>TCK601</u>	\$65.00	600mm width/depth OK Series	502 [19.76]	<u>PDF</u>
<u>TCK801</u>	\$72.00	800mm width/depth OK Series	702 [27.64]	<u>PDF</u>
<u>TCKA01</u>	\$90.00	1000mm width/depth OK Series	902 [35.51]	<u>PDF</u>
<u>TCKC01</u>	\$97.00	1200mm width/depth OK Series	1102 [43.39]	<u>PDF</u>

Note: Dimensions in millimeters [inches].



TTK Series Mounting Profile				
Part Number	Price	Fits Enclosure	Length	Drawing Link
<u>TTK410</u>	\$65.00	400mm width/depth OK Series	300 [11.81]	<u>PDF</u>
<u>TTK610</u>	\$74.00	600mm width/depth OK Series	500 [19.69]	<u>PDF</u>
<u>TTK810</u>	\$81.00	800mm width/depth OK Series	700 [27.56]	<u>PDF</u>
<u>TTKA10</u>	\$90.00	1000mm width/depth OK Series	900 [35.43]	<u>PDF</u>

Note: Dimensions in millimeters [inches].



OK Series Accessories

Drip Shields

Applications

Designed to offer protection from rain in outdoor applications.

Material

- Carbon steel

Finish

- RAL 7035 light gray
- Textured powder coat finish

Features

- Gasket and mounting hardware included

Easily find compatible OK Series parts for your enclosure using the link button or QR code below:

Configuration Tool



Drip Shields			
Part Number	Price	Length	Drawing Link
<u>PFR060</u>	\$108.00	600 [23.62]	<u>PDF</u>
<u>PFR080</u>	\$113.00	800 [31.50]	<u>PDF</u>
<u>PFR100</u>	\$118.00	1000 [39.37]	<u>PDF</u>
<u>PFR120</u>	\$123.00	1200 [47.24]	<u>PDF</u>
Note: Dimensions in millimeters [inches].			



PFR060



OK Series Accessories

Folding Desk

Features

- Mounting hardware included
- Installs inside or outside of enclosure.

Configuration Tool



CSTK70



LIP600

Folding Desk

Part Number	Price	Size HxW	Drawing Link
<u>CSTK70</u>	\$526.00	539 x 352 [21.22 x 13.86]	PDF

Note: Dimensions in millimeters [inches].

Workstation Shelf

Part Number	Price	Size HxW	Drawing Link
<u>LIP600</u>	\$134.00	430 x 300 [16.93 x 11.81]	PDF
<u>LIP800</u>	\$153.00	530 x 300 [20.87 x 11.81]	PDF

Note: Dimensions in millimeters [inches].

Workstation Shelf Brackets

Part Number	Price	Description	Drawing Link
<u>LIP-S</u>	\$53.00	Quadritalia door mounted shelf brackets, carbon steel. For use with OK Series doors.	PDF

OK Series Accessories

Baying Hardware Kit

Application

Baying kit is used to connect two or more enclosure bays together to form a single multi-door enclosure. Fits all sizes of OK Series enclosures.



Side-to-Side Baying Hardware Kit

Part Number	Price	Includes
<u>UTK700</u>	\$40.50	Brackets, gaskets, and fasteners



[URR700](#)

Back-to-Back Baying Kit

Part Number	Price	Description	Drawing Link
<u>URR700</u>	\$44.00	Quadritalia back-to-back baying kit, includes brackets, gaskets and fasteners.	<u>PDF</u>

Filler Plates

Application

Used to fill the gap between the subpanels or roof plates of two joined enclosure bays. Not required for all applications.

Features

Mounting hardware included.

Subpanel Filler Plates

Part Number	Price	Fits Enclosure Height	Description	Drawing Link
<u>FUP188</u>	\$105.00	1800 [70.87]	Quadritalia OK Series subpanel filler plate, galvanized steel.	<u>PDF</u>
<u>FUP208</u>	\$116.00	2000 [78.74]		<u>PDF</u>
<u>FUP228</u>	\$136.00	2200 [86.61]		<u>PDF</u>

Note: Dimensions in millimeters [inches].



Roof Filler Plates

Part Number	Price	Fits Enclosures Depth	Description	Drawing Link
<u>TTP040</u>	\$13.00	400 [15.75]	Quadritalia OK Series roof panel filler plate, carbon steel, RAL 7035 light gray, textured powder coat finish.	<u>PDF</u>
<u>TTP060</u>	\$13.50	600 [23.62]		<u>PDF</u>
<u>TTP080</u>	\$16.00	800 [31.50]		<u>PDF</u>

Note: Dimensions in millimeters [inches].





OK Series Accessories

Subpanel Mounting Hardware Kits

Application

PPK100 is included with each subpanel and is used to mount the subpanel within the enclosure.

Subpanel Mounting Hardware Kits		
Part Number	Price	Includes
PPK100	\$51.00	Brackets, sliders, conic pins, and fasteners included.



Easily find compatible OK Series parts for your enclosure using the link button or QR code below:

Configuration Tool



Application

APK110 allows the subpanel to be recess mounted flush within the frame rails of the enclosure for maximizing interior space, for side-mounting subpanels, or to form a barrier between adjacent bays.

Subpanel Mounting Hardware Kits		
Part Number	Price	Includes
APK110	\$20.50	Brackets, sliders, conic pins, and fasteners included.



OK Series Accessories



Cage Nuts

Part Number	Price	Description	Qty
<u>DGM800</u>	\$77.00	M8 cage nut	100
<u>DGM600</u>	\$40.50	M6 zinc plated finish cage nut	100
<u>DGM901</u>	\$48.00	M6 outdoor cage nut	100



Screws

Part Number	Price	Description	Qty
<u>VTR500</u>	\$35.00	screw, M5 x 10mm, Phillips countersunk head, zinc plated steel	100
<u>VTR510</u>	\$41.50	screw, M5 x 8mm, Phillips pan head, zinc plated steel	100
<u>VBC612</u>	\$67.00	screw, M6 x 12mm, T30 Torx head, zinc plated steel	100
<u>VBC614</u>	\$42.00	screw, M6 x 14mm, T30 Torx head	100
<u>VBC616</u>	\$41.50	screw, M6 x 16mm, T30 Torx head	100
<u>VTS616</u>	\$42.50	screw, M6 x 16mm, T30 Torx pan head	100
<u>VTD600</u>	\$68.00	screw and flange nut, M6 x 8mm, hex head, zinc plated steel	100
<u>VTD616</u>	\$68.00	screw and flange nut, M6 x 16mm, hex head, zinc plated steel	100
<u>VTD800</u>	\$83.00	screw and flange nut, M8 x 16mm, hex head, zinc plated steel	100
<u>VTM903</u>	\$51.00	screw, M8 x 16mm, T30 Torx head, zinc plated steel	100
<u>VTC122</u>	\$96.00	screw, M12 x 20mm, 8mm Allen flat head	100



Flange Nuts

Part Number	Price	Description	Drawing Link
<u>DDM600</u>	\$33.00	Quadritalia flange nut, M6, hex head, zinc plated steel. Package of 100.	<u>PDF</u>
<u>DDM800</u>	\$38.50	Quadritalia flange nut, M8, hex head, zinc plated steel. Package of 100.	<u>PDF</u>



Easily find compatible OK Series parts for your enclosure using the link button or QR code below:

[Configuration Tool](#)



OK Series Accessories



Latch Handle			
Part Number	Price	Description	Drawing Link
<u>SRR773B</u>	\$107.00	Quadritalia enclosure latch handle, replacement, keylocking, foldaway. (1) Yale-type key included.	<u>PDF</u>



Eyebolts and Lifting Lugs				
Part Number	Price	Description	Qty	Drawing Link
<u>GLF812-K4</u>	\$38.50	Quadritalia eyebolt, M12 x 1.5mm x 22mm, galvanized steel.	4	<u>PDF</u>
<u>GLP830</u>	\$46.00	Quadritalia bolt-on lifting lug, galvanized steel.	1	

[GLF812-K4](#)[GLP830](#)

Application

Mounting clips are used to attach side and rear panels to the vertical rails.

* Assembly requires a T30 bit.

Mounting Clips			
Part Number	Price	Includes	Qty
<u>CLK013-KIT2F</u>	\$58.00	M6 hex nut and gasket included	12



Easily find compatible OK Series parts for your enclosure using the link button or QR code below:

[Configuration Tool](#)



OK Series Accessories



[PTR600P](#)

Transformer Support			
Part Number	Price	Description	Drawing Link
<u>PTR600P</u>	\$86.00	Quadritalia transformer support, galvanized steel. For use with 600mm width OK series enclosures.	<u>PDF</u>
<u>PTR800P</u>	\$90.00	Quadritalia transformer support, galvanized steel. For use with 800mm width OK Series enclosures.	<u>PDF</u>
<u>PTR681</u>	\$29.50	Quadritalia transformer support inserts, galvanized steel. For use with transformer supports PTRx00P.	<u>PDF</u>



[SGK060](#)

DIN Rail Mounting Brackets			
Part Number	Price	Description	Drawing Link
<u>SGK060</u>	\$31.00	Quadritalia adjustable depth DIN rail mounting bracket, carbon steel, 60mm, zinc plated finish. For use with OK series enclosures.	<u>PDF</u>
<u>SGK150</u>	\$35.00	Quadritalia adjustable depth DIN rail mounting bracket, carbon steel, 150mm, zinc plated finish. For use with OK series enclosures.	<u>PDF</u>