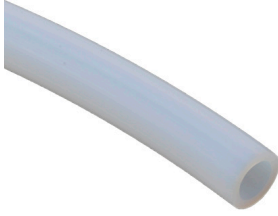




PTFE Pneumatic Tubing



NITRA PTFE tubing is made from the highest quality, 100% virgin raw materials and has a hardness specification of Shore D 55. PTFE tubing is an excellent choice for many high heat applications. It has exceptional resistance to degradation of mechanical properties under severe conditions. NITRA PTFE tubing does not support combustion and has very good dielectric properties. NITRA PTFE is ideal for use with NITRA stainless steel push-to-connect fittings.

Features

- Inch and metric sizes available
- Natural color
- 100 foot package sizes
- Shore D 55 hardness
- High working pressure and temperature/chemical resistance
- Made in USA

PTFE 1/4 in. x 1/8 in. Tubing Specifications					
<i>Outside Diameter (in.)</i>	0.250	<i>Working Pressure (psi) @ 70°F</i>	372	<i>Temp. Range</i>	-454°F to +500°F (-270°C to +260°C)
<i>Inside Diameter (in.)</i>	0.125	<i>Burst Pressure (psi)</i>	1488	<i>Hardness</i>	Shore D 55
<i>Wall Thickness (in.)</i>	0.063	<i>Vacuum Rating</i>	To 28" Hg	<i>Bend Radius (in.)</i>	1.18
100 ft. Package Length					
<i>Part Number</i>	<i>Price</i>	<i>Color</i>	<i>Package Weight (lbs)</i>		
PT14-18NAT100	\$229.00	Natural	2.29		

PTFE 1/4 in. x 5/32 in. Tubing Specifications					
<i>Outside Diameter (in.)</i>	0.250	<i>Working Pressure (psi) @ 70°F</i>	275	<i>Temp. Range</i>	-454°F to +500°F (-270°C to +260°C)
<i>Inside Diameter (in.)</i>	0.156	<i>Burst Pressure (psi)</i>	1100	<i>Hardness</i>	Shore D 55
<i>Wall Thickness (in.)</i>	0.047	<i>Vacuum Rating</i>	To 28" Hg	<i>Bend Radius (in.)</i>	1.97
100 ft. Package Length					
<i>Part Number</i>	<i>Price</i>	<i>Color</i>	<i>Package Weight (lbs)</i>		
PT14-532NAT100	\$178.00	Natural	2.02		

PTFE 1/4 in. x 3/16 in. Tubing Specifications					
<i>Outside Diameter (in.)</i>	0.250	<i>Working Pressure (psi) @ 70°F</i>	174	<i>Temp. Range</i>	-454°F to +500°F (-270°C to +260°C)
<i>Inside Diameter (in.)</i>	0.188	<i>Burst Pressure (psi)</i>	696	<i>Hardness</i>	Shore D 55
<i>Wall Thickness (in.)</i>	0.031	<i>Vacuum Rating</i>	To 28" Hg	<i>Bend Radius (in.)</i>	2.56
100 ft. Package Length					
<i>Part Number</i>	<i>Price</i>	<i>Color</i>	<i>Package Weight (lbs)</i>		
PT14-316NAT100	\$137.00	Natural	1.75		



PTFE Pneumatic Tubing

PTFE 3/8 in. x 1/4 in. Tubing Specifications					
<i>Outside Diameter (in.)</i>	0.375	<i>Working Pressure (psi) @ 70°F</i>	240	<i>Temp. Range</i>	-454°F to +500°F (-270°C to +260°C)
<i>Inside Diameter (in.)</i>	0.250	<i>Burst Pressure (psi)</i>	960	<i>Hardness</i>	Shore D 55
<i>Wall Thickness (in.)</i>	0.063	<i>Vacuum Rating</i>	To 28" Hg	<i>Bend Radius (in.)</i>	4.33
100 ft. Package Length					
<i>Part Number</i>	<i>Price</i>	<i>Color</i>	<i>Package Weight (lbs)</i>		
PT38NAT100	\$386.00	Natural	5.84		

PTFE 1/2 in. x 3/8 in. Tubing Specifications					
<i>Outside Diameter (in.)</i>	0.500	<i>Working Pressure (psi) @ 70°F</i>	150	<i>Temp. Range</i>	-454°F to +500°F (-270°C to +260°C)
<i>Inside Diameter (in.)</i>	0.375	<i>Burst Pressure (psi)</i>	600	<i>Hardness</i>	Shore D 55
<i>Wall Thickness (in.)</i>	0.063	<i>Vacuum Rating</i>	To 28" Hg	<i>Bend Radius (in.)</i>	6.50
100 ft. Package Length					
<i>Part Number</i>	<i>Price</i>	<i>Color</i>	<i>Package Weight (lbs)</i>		
PT12NAT100	\$442.00	Natural	6.5		

PTFE 4 mm x 2.5 mm Tubing Specifications					
<i>Outside Diameter (mm)</i>	4.0	<i>Working Pressure (psi) @ 70°F</i>	292	<i>Temp. Range</i>	-454°F to +500°F (-270°C to +260°C)
<i>Inside Diameter (mm)</i>	2.5	<i>Burst Pressure (psi)</i>	1168	<i>Hardness</i>	Shore D 55
<i>Wall Thickness (mm)</i>	0.75	<i>Vacuum Rating</i>	To 28" Hg	<i>Bend Radius (mm)</i>	25.0
100 ft. Package Length					
<i>Part Number</i>	<i>Price</i>	<i>Color</i>	<i>Package Weight (lbs)</i>		
PT4MNAT100	\$173.00	Natural	1.51		

PTFE 6 mm x 4 mm Tubing Specifications					
<i>Outside Diameter (mm)</i>	6.0	<i>Working Pressure (psi) @ 70°F</i>	275	<i>Temp. Range</i>	-454°F to +500°F (-270°C to +260°C)
<i>Inside Diameter (mm)</i>	4.0	<i>Burst Pressure (psi)</i>	1100	<i>Hardness</i>	Shore D 55
<i>Wall Thickness (mm)</i>	1.0	<i>Vacuum Rating</i>	To 28" Hg	<i>Bend Radius (mm)</i>	40.0
100 ft. Package Length					
<i>Part Number</i>	<i>Price</i>	<i>Color</i>	<i>Package Weight (lbs)</i>		
PT6MNAT100	\$238.00	Natural	2.29		



PTFE Pneumatic Tubing

PTFE 8 mm x 6 mm Tubing Specifications					
Outside Diameter (mm)	8.0	Working Pressure (psi) @ 70°F	138	Temp. Range	-454°F to +500°F (-270°C to +260°C)
Inside Diameter (mm)	6.0	Burst Pressure (psi)	552	Hardness	Shore D 70
Wall Thickness (mm)	1.0	Vacuum Rating	To 28" Hg	Bend Radius (mm)	60.0
100 ft. Package Length					
Part Number	Price	Color	Package Weight (lbs)		
PT8MNAT100	\$307.00	Natural	3.20		

PTFE 10 mm x 8 mm Tubing Specifications					
Outside Diameter (mm)	10.0	Working Pressure (psi) @ 70°F	112	Temp. Range	-454°F to +500°F (-270°C to +260°C)
Inside Diameter (mm)	8.0	Burst Pressure (psi)	448	Hardness	Shore D 70
Wall Thickness (mm)	1.0	Vacuum Rating	To 28" Hg	Bend Radius (mm)	100.0
100 ft. Package Length					
Part Number	Price	Color	Package Weight (lbs)		
PT10MNAT100	\$373.00	Natural	4.13		

PTFE 12 mm x 10 mm Tubing Specifications					
Outside Diameter (mm)	12.0	Working Pressure (psi) @ 70°F	105	Temp. Range	-454°F to +500°F (-270°C to +260°C)
Inside Diameter (mm)	10.0	Burst Pressure (psi)	420	Hardness	Shore D 70
Wall Thickness (mm)	1.0	Vacuum Rating	To 28" Hg	Bend Radius (mm)	100.0
100 ft. Package Length					
Part Number	Price	Color	Package Weight (lbs)		
PT12MNAT100	\$454.00	Natural	6.0		

NITRA Pneumatic Tubing Accessories

Pneumatic Tubing Cutter				
Part Number	Description	Pcs/Pkg	Package Weight (lbs)	Price
TC-12	NITRA pneumatic tubing cutter for use with 1/8 to 1/2 inch and 4 to 12 mm outside diameter flexible plastic tubing.	1	0.1	\$4.00
TC-20	NITRA pneumatic heavy duty tubing cutter for use with polyurethane, nylon and other flexible tubing up to 2 inch [50mm] outside diameter.	1	0.2	\$7.75



TC-12



TC-20