



F-Series All Stainless Steel Pneumatic Cylinders - 3/4 inch Bore

3/4 in. Bore, Double-acting, Double End Mount, Magnetic Piston



Part no. F12030DD-M

NITRA pneumatic stainless steel round body, interchangeable, non-repairable cylinder, 3/4 inch bore, 1/8 inch female NPT ports, double acting, double end mount, magnetic piston.

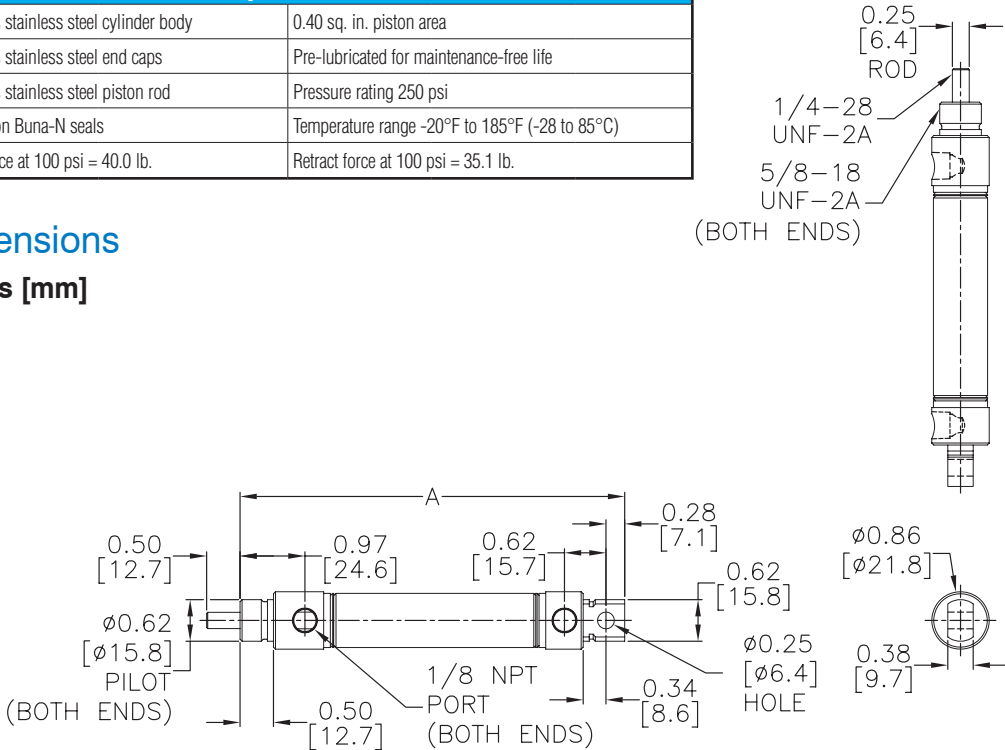
| All Stainless Steel Cylinder 3/4 in. bore, double acting, double end mount, magnetic piston | | | | |
|--|---------------------|-----------|--------------|----------|
| Part Number | Stroke Length (in.) | "A" (in.) | Weight (lbs) | Price |
| F12010DD-M | 1.0 | 4.75 | 0.3 | \$98.00 |
| F12020DD-M | 2.0 | 5.75 | 0.5 | \$104.00 |
| F12030DD-M | 3.0 | 6.75 | 0.5 | \$102.00 |
| F12040DD-M | 4.0 | 7.75 | 0.5 | \$107.00 |
| F12050DD-M | 5.0 | 8.75 | 0.6 | \$104.00 |
| F12060DD-M | 6.0 | 9.75 | 0.6 | \$107.00 |
| F12080DD-M | 8.0 | 11.75 | 0.8 | \$110.00 |
| F12100DD-M | 10.0 | 13.75 | 0.8 | \$113.00 |
| F12120DD-M | 12.0 | 15.75 | 0.9 | \$116.00 |

| Specifications | |
|--|--|
| 300 series stainless steel cylinder body | 0.40 sq. in. piston area |
| 300 series stainless steel end caps | Pre-lubricated for maintenance-free life |
| 300 series stainless steel piston rod | Pressure rating 250 psi |
| Low friction Buna-N seals | Temperature range -20°F to 185°F (-28 to 85°C) |
| Extend force at 100 psi = 40.0 lb. | Retract force at 100 psi = 35.1 lb. |

| Mount Style | Bracket | Nut |
|------------------|---------|----------|
| Front Nose Mount | FMB-6 | FN-58-18 |
| Rear Pivot Mount | FPBP-2 | - |
| Double End Mount | Front | FMB-6 |
| | Rear | FMB-6 |

Cylinder rod clevis FRC-14-28
See end of F-series section for Accessories

Dimensions inches [mm]





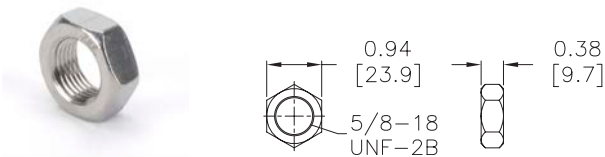
F-Series All Stainless Steel Pneumatic Cylinder Accessories

| F-Series All Stainless Steel Pneumatic Cylinder Accessories | | | | |
|---|---|---------|---------|---------|
| Part Number | Description | Pcs/Pkg | Wt (lb) | Price |
| FN-58-18 | Cylinder mounting nut with 5/8-18 UNF-2B threads, stainless steel, used to mount 3/4 and 1-1/16 inch bore NITRA F-series round body air cylinders | 1 | 0.1 | \$2.50 |
| FN-34-16 | Cylinder mounting nut with 3/4-16 UNF-2B threads, stainless steel, used to mount 1-1/2 inch bore NITRA F-series round body air cylinders | 1 | 0.1 | \$3.25 |
| FN-114-12 | Cylinder mounting nut with 1-1/4-12 UNF-2B threads, stainless steel, used to mount 2 inch bore NITRA F-series round body air cylinders | 1 | 0.3 | \$7.75 |
| FMB-6 | Cylinder mounting bracket, stainless steel, used to mount 3/4 and 1-1/16 inch bore NITRA F-series round body air cylinders | 1 | 0.1 | \$7.25 |
| FMB-7 | Cylinder mounting bracket, stainless steel, used to mount 1-1/2 inch bore NITRA F-series round body air cylinders | 1 | 0.2 | \$21.00 |
| FMB-11 | Cylinder mounting bracket, stainless steel, used to mount 2 inch bore NITRA F-series round body air cylinders | 1 | 0.5 | \$31.00 |
| FPBP-2 | Cylinder pivot mounting bracket with pivot pin, stainless steel, used to mount 3/4 and 1-1/16 inch bore NITRA F-series round body air cylinders | 1 | 0.1 | \$19.50 |
| FPBP-3 | Cylinder pivot mounting bracket with pivot pin, stainless steel, used to mount 1-1/2 inch bore NITRA F-series round body air cylinders | 1 | 0.2 | \$24.00 |
| FPBP-4 | Cylinder pivot mounting bracket with pivot pin, stainless steel, used to mount 2 inch bore NITRA F-series round body air cylinders | 1 | 0.3 | \$30.00 |
| FRC-14-28 | Cylinder rod clevis and hex nut, stainless steel, 1/4-28 thread, for use with 3/4 inch bore NITRA F-series round body air cylinders | 1 | 0.1 | \$24.50 |
| FRC-516-24 | Cylinder rod clevis and hex nut, stainless steel, 5/16-24 thread, for use with 1-1/16 inch bore NITRA F-series round body air cylinders | 1 | 0.1 | \$28.50 |
| FRC-716-20 | Cylinder rod clevis and hex nut, stainless steel, 7/16-20 thread, for use with 1-1/2 inch bore NITRA F-series round body air cylinders | 1 | 0.2 | \$35.00 |
| FRC-12-20 | Cylinder rod clevis and hex nut, stainless steel, 1/2-20 thread, for use with 2 inch bore NITRA F-series round body air cylinders | 1 | 0.2 | \$41.50 |

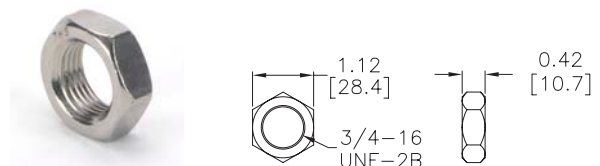
Dimensions

inches [mm]

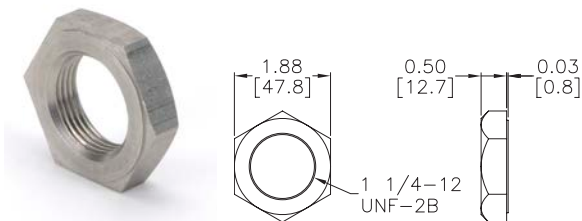
FN-58-18



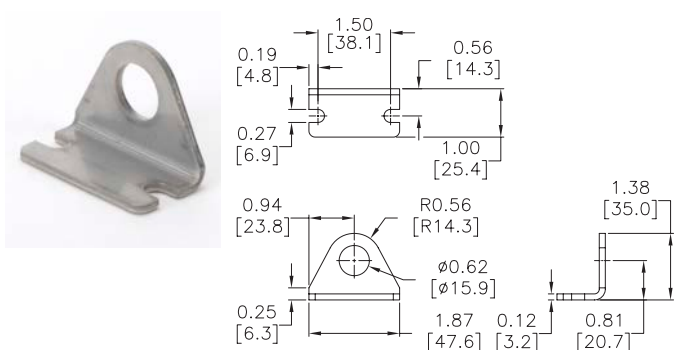
FN-34-16



FN-114-12



FMB-6



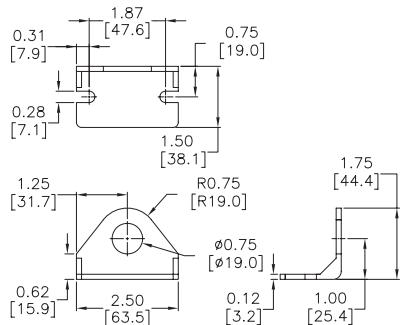


F-Series All Stainless Steel Pneumatic Cylinder Accessories

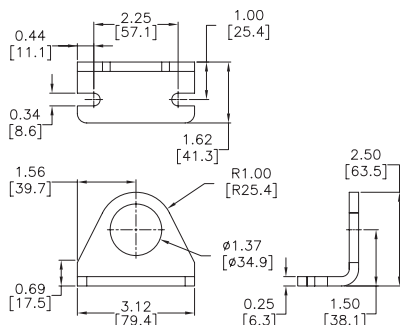
Dimensions

inches [mm]

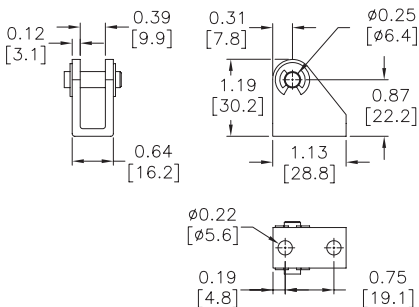
FMB-7



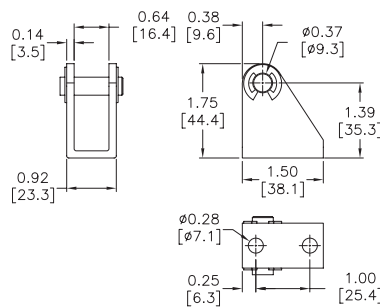
FMB-11



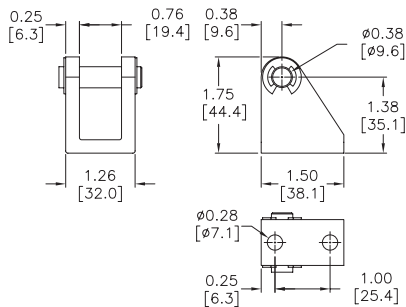
FPBP-2



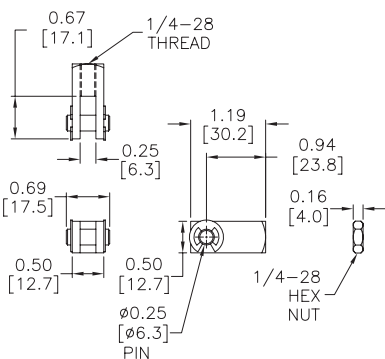
FPBP-3



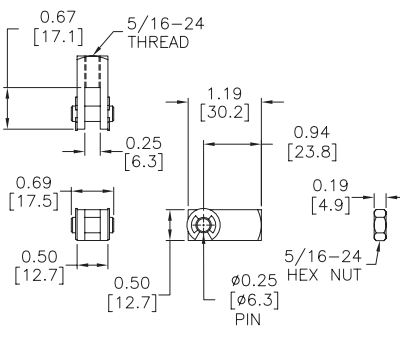
FPBP-4



FRC-14-28



FRC-516-24



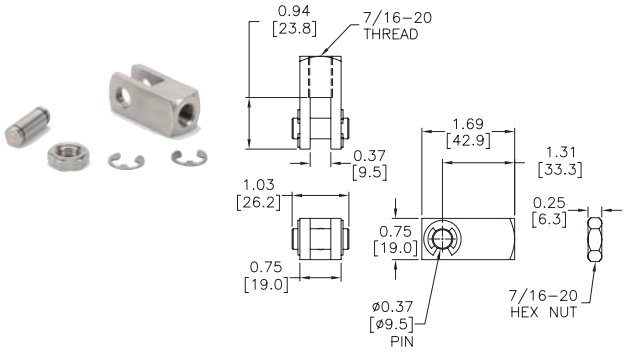


F-Series All Stainless Steel Pneumatic Cylinder Accessories

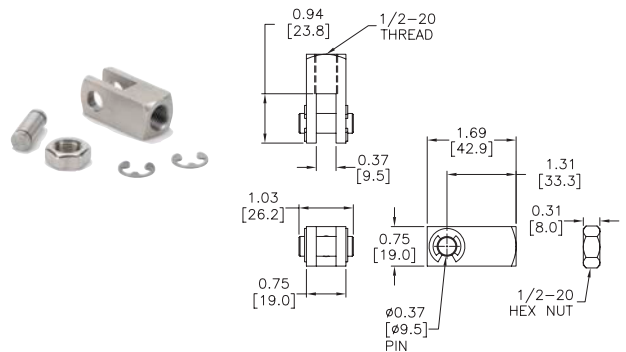
Dimensions

inches [mm]

FRC-716-20




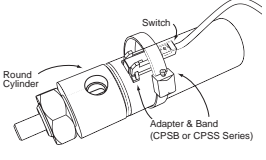
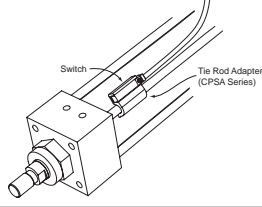

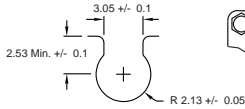
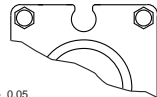

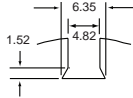
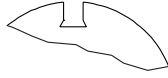

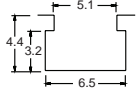
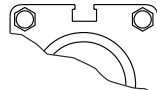

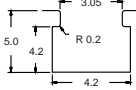
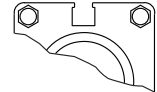

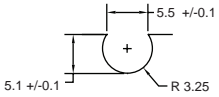


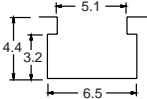
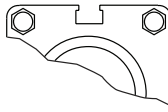

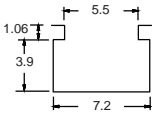
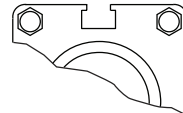
FRC-12-20





CPS Series Cylinder Position Switches

Position Switch Cross Reference Chart

| NITRA Switch Type | Cylinder Brand (may fit some of these cylinders) | Photo Example | Groove Illustration | |
|-----------------------------------|---|---|--|---|
| <p>CPS CPSF</p> | <p>NITRA A-Series, D-Series, F-Series</p> |  |  |  |
| <p>CPS9C</p> | <p>DE-STA-CO Robohand SMC Compact Air</p> |  |  |  |
| <p>CPS9D</p> | <p>Fabco Numatics Rotomation</p> |  |  |  |
| <p>CPS9F</p> | <p>NITRA G-Series Fabco Festo Numatics Rotomation</p> |  |  |  |
| <p>CPS9H</p> | <p>NITRA E-Series NITRA H-Series</p> |  |  |  |
| <p>CPS9M</p> | <p>Norgren</p> |  |  |  |
| <p>CPS9Q</p> | <p>NITRA G-Series Parker</p> |  |  |  |
| <p>CPS9T</p> | <p>SMC</p> |  |  |  |