



F-Series All Stainless Steel Pneumatic Cylinders - 2 inch Bore

2 in. Bore, Double-acting, Front Nose Mount



NITRA pneumatic stainless steel round body, interchangeable, non-repairable cylinder, 2 inch bore, 1/4 inch female NPT ports, double acting, front nose mount.

All Stainless Steel Cylinder 2 in. bore, double acting, front nose mount				
Part Number	Stroke Length (in.)	Weight (lbs)	Price	Drawing Link
F32010DN	1.0	2.4	\$147.00	PDF
F32020DN	2.0	2.6	\$152.00	PDF
F32030DN	3.0	2.9	\$157.00	PDF
F32040DN	4.0	3.0	\$160.00	PDF
F32050DN	5.0	3.3	\$165.00	PDF
F32060DN	6.0	3.5	\$169.00	PDF
Specifications				
300 series stainless steel cylinder body		3.1 sq. in. piston area		
Rod diameter 5/8 in.		Rod thread 1/2-20		
300 series stainless steel end caps		Pre-lubricated for maintenance-free life		
300 series stainless steel piston rod		Pressure rating 250 psi		
Low friction Buna-N seals		Temperature range -20°F to 200°F (-28 to 93°C)		
Extend force at 100 psi = 310.0 lb.		Retract force at 100 psi = 279.3 lb.		

Mount Style	Bracket	Nut
Front Nose Mount	FMB-11	FN-114-12
Rear Pivot Mount	—	—
Double End Mount	Front	—
	Rear	—

Cylinder rod clevis FRC-12-20

See end of F-series section for Accessories



F-Series All Stainless Steel Pneumatic Cylinders - 2 inch Bore

2 in. Bore, Double-acting, Double End Mount



NITRA pneumatic stainless steel round body, interchangeable, non-repairable cylinder, 2 inch bore, 1/4 inch female NPT ports, double acting, double end mount.

All Stainless Steel Cylinder 2 in. bore, double acting, double end mount				
Part Number	Stroke Length (in.)	Weight (lbs)	Price	Drawing Link
F32010DD	1.0	2.7	\$169.00	PDF
F32020DD	2.0	2.8	\$174.00	PDF
F32030DD	3.0	3.2	\$178.00	PDF
F32040DD	4.0	3.3	\$182.00	PDF
F32050DD	5.0	3.6	\$187.00	PDF
F32060DD	6.0	3.8	\$190.00	PDF
F32080DD	8.0	4.2	\$199.00	PDF
F32100DD	10.0	4.6	\$208.00	PDF
F32120DD	12.0	5.1	\$215.00	PDF
F32140DD	14.0	5.6	\$145.00	PDF
F32160DD	16.0	6.0	\$233.00	PDF
F32180DD	18.0	6.5	\$242.00	PDF
Specifications				
300 series stainless steel cylinder body		3.1 sq. in. piston area		
Rod diameter 5/8 in.		Rod thread 1/2-20		
300 series stainless steel end caps		Pre-lubricated for maintenance-free life		
300 series stainless steel piston rod		Pressure rating 250 psi		
Low friction Buna-N seals		Temperature range -20°F to 200°F (-28 to 93°C)		
Extend force at 100 psi = 310.0 lb.		Retract force at 100 psi = 279.3 lb.		

Mount Style	Bracket	Nut
Front Nose Mount	FMB-11	FN-114-12
Rear Pivot Mount	FPBP-4	—
Double End Mount	Front	FMB-11 FN-114-12
	Rear	FMB-11 FN-114-12

Cylinder rod clevis [FRC-12-20](#)

See end of F-series section for Accessories



F-Series All Stainless Steel Pneumatic Cylinders - 2 inch Bore

2 in. Bore, Double-acting, Double End Mount, Magnetic Piston



NITRA pneumatic stainless steel round body, interchangeable, non-repairable cylinder, 2 inch bore, 1/4 inch female NPT ports, double acting, double end mount, magnetic piston.

All Stainless Steel Cylinder 2 in. bore, double acting, double end mount, magnetic piston				
Part Number	Stroke Length (in.)	Weight (lbs)	Price	Drawing Link
F32010DD-M	1.0	2.7	\$192.00	PDF
F32020DD-M	2.0	2.8	\$196.00	PDF
F32030DD-M	3.0	3.2	\$204.00	PDF
F32040DD-M	4.0	3.3	\$205.00	PDF
F32050DD-M	5.0	3.6	\$209.00	PDF
F32060DD-M	6.0	3.8	\$213.00	PDF
F32080DD-M	8.0	4.2	\$221.00	PDF
F32100DD-M	10.0	4.6	\$231.00	PDF
F32120DD-M	12.0	5.0	\$238.00	PDF
F32140DD-M	14.0	5.6	\$248.00	PDF
F32160DD-M	16.0	6.0	\$256.00	PDF
F32180DD-M	18.0	6.5	\$264.00	PDF
Specifications				
300 series stainless steel cylinder body		3.10 sq. in. piston area		
Rod diameter 5/8 in.		Rod thread 1/2-20		
300 series stainless steel end caps		Pre-lubricated for maintenance-free life		
300 series stainless steel piston rod		Pressure rating 250 psi		
Low friction Buna-N seals		Temperature range -20°F to 185°F (-28 to 85°C)		
Extend force at 100 psi = 310 lb.		Retract force at 100 psi = 279.3 lb.		

Mount Style	Bracket	Nut
Front Nose Mount	FMB-11	FN-114-12
Rear Pivot Mount	FPBP-4	—
Double End Mount	Front	FMB-11 FN-114-12
	Rear	FMB-11 FN-114-12

Cylinder rod clevis [FRC-12-20](#)
See end of F-series section for Accessories



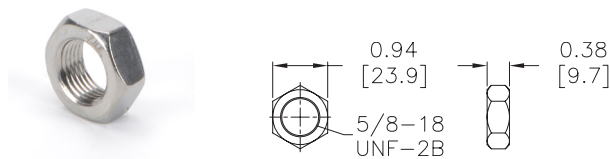
F-Series All Stainless Steel Pneumatic Cylinder Accessories

F-Series All Stainless Steel Pneumatic Cylinder Accessories				
Part Number	Description	Pcs/Pkg	Wt (lb)	Price
FN-58-18	Cylinder mounting nut with 5/8-18 UNF-2B threads, stainless steel, used to mount 3/4 and 1-1/16 inch bore NITRA F-series round body air cylinders	1	0.1	\$3.50
FN-34-16	Cylinder mounting nut with 3/4-16 UNF-2B threads, stainless steel, used to mount 1-1/2 inch bore NITRA F-series round body air cylinders	1	0.1	\$4.50
FN-114-12	Cylinder mounting nut with 1-1/4-12 UNF-2B threads, stainless steel, used to mount 2 inch bore NITRA F-series round body air cylinders	1	0.3	\$11.00
FMB-6	Cylinder mounting bracket, stainless steel, used to mount 3/4 and 1-1/16 inch bore NITRA F-series round body air cylinders	1	0.1	\$10.00
FMB-7	Cylinder mounting bracket, stainless steel, used to mount 1-1/2 inch bore NITRA F-series round body air cylinders	1	0.2	\$30.50
FMB-11	Cylinder mounting bracket, stainless steel, used to mount 2 inch bore NITRA F-series round body air cylinders	1	0.5	\$44.00
FPBP-2	Cylinder pivot mounting bracket with pivot pin, stainless steel, used to mount 3/4 and 1-1/16 inch bore NITRA F-series round body air cylinders	1	0.1	\$28.00
FPBP-3	Cylinder pivot mounting bracket with pivot pin, stainless steel, used to mount 1-1/2 inch bore NITRA F-series round body air cylinders	1	0.2	\$35.00
FPBP-4	Cylinder pivot mounting bracket with pivot pin, stainless steel, used to mount 2 inch bore NITRA F-series round body air cylinders	1	0.3	\$43.00
FRC-14-28	Cylinder rod clevis and hex nut, stainless steel, 1/4-28 thread, for use with 3/4 inch bore NITRA F-series round body air cylinders	1	0.1	\$36.00
FRC-516-24	Cylinder rod clevis and hex nut, stainless steel, 5/16-24 thread, for use with 1-1/16 inch bore NITRA F-series round body air cylinders	1	0.1	\$40.50
FRC-716-20	Cylinder rod clevis and hex nut, stainless steel, 7/16-20 thread, for use with 1-1/2 inch bore NITRA F-series round body air cylinders	1	0.2	\$50.00
FRC-12-20	Cylinder rod clevis and hex nut, stainless steel, 1/2-20 thread, for use with 2 inch bore NITRA F-series round body air cylinders	1	0.2	\$59.00

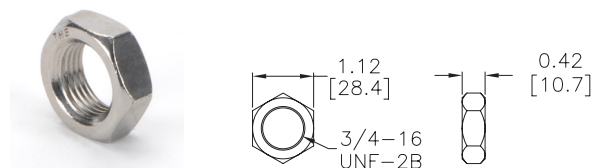
Dimensions

inches [mm]

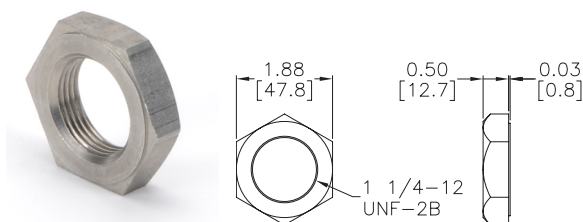
[**FN-58-18**](#)



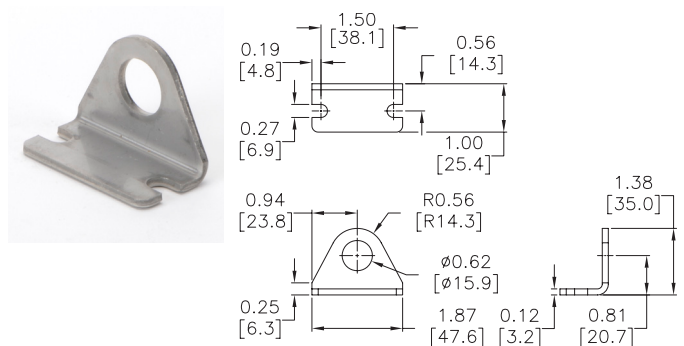
[**FN-34-16**](#)



[**FN-114-12**](#)



[**FMB-6**](#)



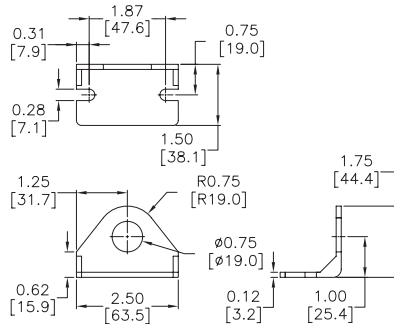


F-Series All Stainless Steel Pneumatic Cylinder Accessories

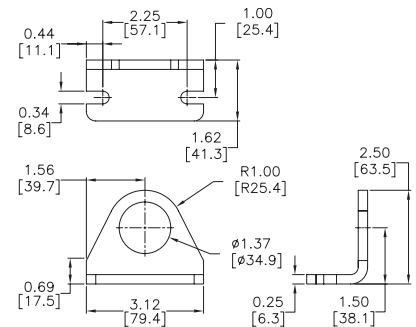
Dimensions

inches [mm]

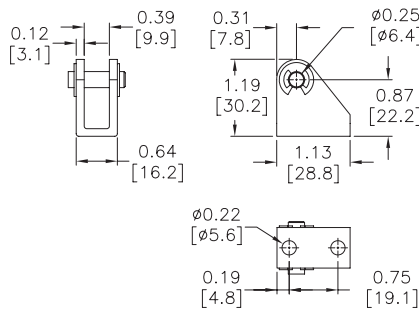
FMB-7



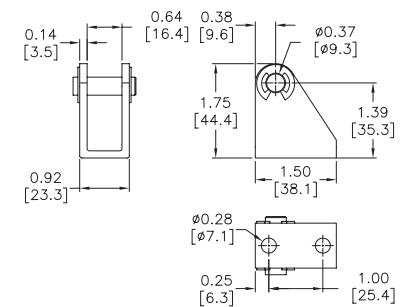
FMB-11



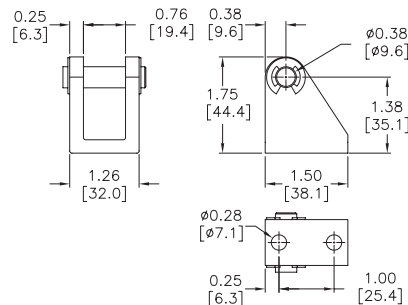
FPBP-2



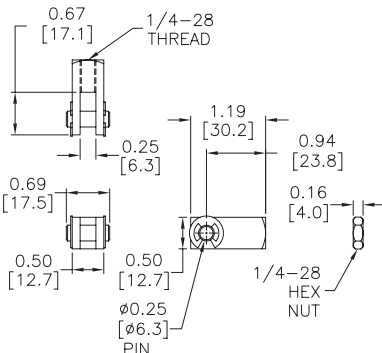
FPBP-3



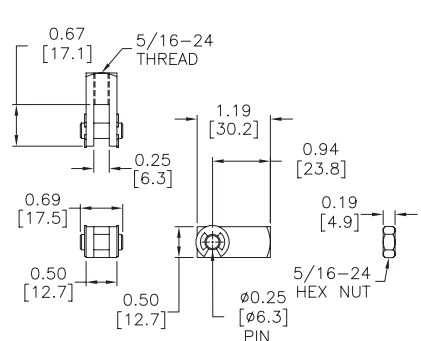
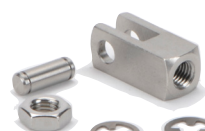
FPBP-4



FRC-14-28



FRC-516-24



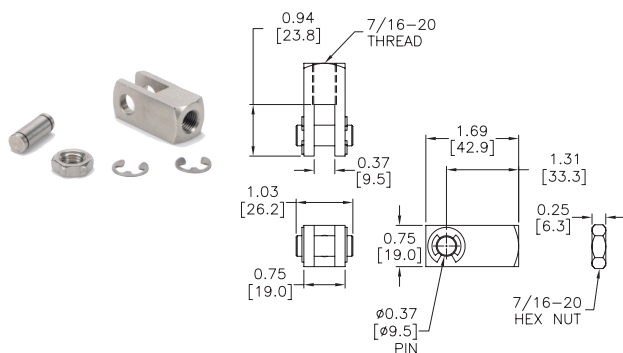


F-Series All Stainless Steel Pneumatic Cylinder Accessories

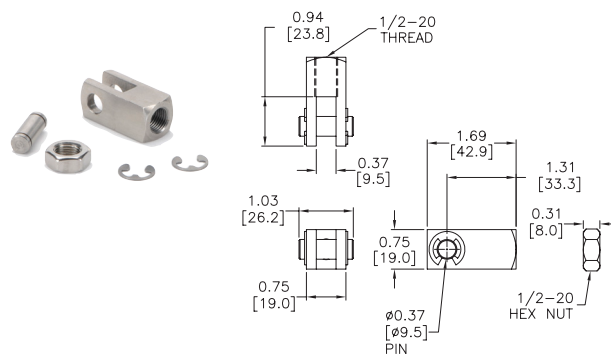
Dimensions

inches [mm]

FRC-716-20



FRC-12-20





CPS Series Cylinder Position Switches

Position Switch Cross Reference Chart

NITRA Switch Type	Cylinder Brand (may fit some of these cylinders)	Photo Example	Groove Illustration	
CPS CPSF	NITRA A-Series NITRA D-Series NITRA F-Series			
CPS9C	DE-STA-CO Robohand SMC Compact Air Bimba Fabco			
CPS9D	NITRA L-Series Fabco Numatics Rotomation			
CPS9E	NITRA L-Series Fabco Numatics Rotomation			
CPS9F	NITRA G-Series Fabco Festo Numatics Rotomation			
CPS9H	NITRA E-Series NITRA H-Series			
CPS9M	Norgren			
CPS9Q	NITRA L-Series NITRA G-Series Parker Fabco Festo Numatics Rotomation			