



F-Series All Stainless Steel Pneumatic Cylinders - 1-1/16 inch Bore

1-1/16 in. Bore, Double-acting, Front Nose Mount



Part no. F17030DN

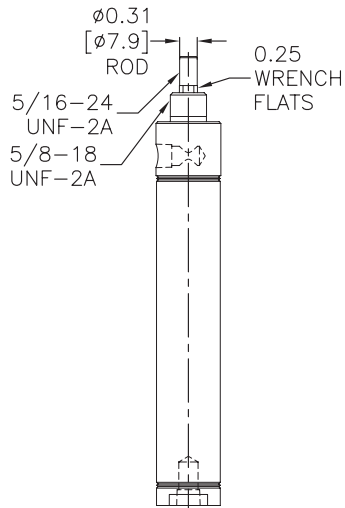
NITRA pneumatic stainless steel round body, interchangeable, non-repairable cylinder, 1-1/16 inch bore, 1/8 inch female NPT ports, double acting, front nose mount.

All Stainless Steel Cylinder 1-1/16 in. bore, double acting, front nose mount				
Part Number	Stroke Length (in.)	"A" (in.)	Weight (lbs)	Price
F17005DN	0.5	3.75	0.6	\$82.00
F17010DN	1.0	4.25	0.6	\$84.00
F17020DN	2.0	5.25	0.6	\$85.00
F17030DN	3.0	6.25	0.8	\$87.00
F17040DN	4.0	7.25	0.8	\$88.00
F17050DN	5.0	8.25	0.9	\$89.00
F17060DN	6.0	9.25	0.9	\$91.00
F17080DN	8.0	11.25	1.1	\$94.00
F17100DN	10.0	13.25	1.2	\$94.00
F17120DN	12.0	15.25	1.4	\$101.00

Specifications	
300 series stainless steel cylinder body	0.90 sq. in. piston area
300 series stainless steel end caps	Pre-lubricated for maintenance-free life
300 series stainless steel piston rod	Pressure rating 250 psi
Low friction Buna-N seals	Temperature range -20°F to 200°F (-28 to 93°C)
Extend force at 100 psi = 90.0 lb.	Retract force at 100 psi = 82.3 lb.

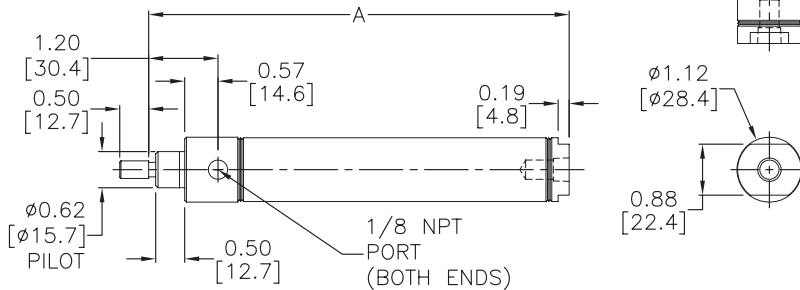
Mount Style	Bracket	Nut
Front Nose Mount	FMB-6	FN-58-18
Rear Pivot Mount	-	-
Double End Mount	Front	-
	Rear	-

Cylinder rod clevis FRC-516-24
See end of F-series section for Accessories



Dimensions

inches [mm]





F-Series All Stainless Steel Pneumatic Cylinders - 1-1/16 inch Bore

1-1/16 in. Bore, Double-acting, Double End Mount



Part no. F17030DD

NITRA pneumatic stainless steel round body, interchangeable, non-repairable cylinder, 1-1/16 inch bore, 1/8 inch female NPT ports, double acting, double end mount.

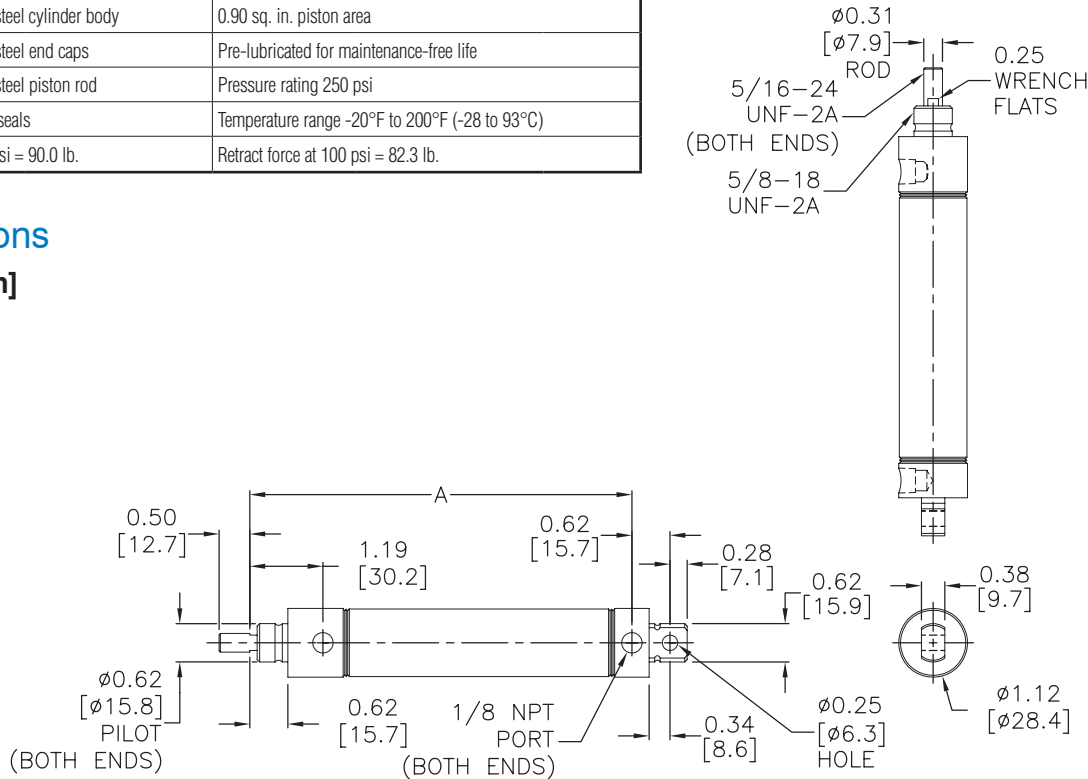
All Stainless Steel Cylinder 1-1/16 in. bore, double acting, double end mount				
Part Number	Stroke Length (in.)	"A" (in.)	Weight (lbs)	Price
F17010DD	1.0	4.84	0.6	\$99.00
F17020DD	2.0	5.84	0.6	\$101.00
F17030DD	3.0	6.84	0.8	\$103.00
F17040DD	4.0	7.84	0.8	\$105.00
F17050DD	5.0	8.84	0.9	\$101.00
F17060DD	6.0	9.84	0.9	\$107.00
F17080DD	8.0	11.84	1.1	\$110.00
F17100DD	10.0	13.84	1.2	\$113.00
F17120DD	12.0	15.84	1.4	\$116.00

Specifications	
300 series stainless steel cylinder body	0.90 sq. in. piston area
300 series stainless steel end caps	Pre-lubricated for maintenance-free life
300 series stainless steel piston rod	Pressure rating 250 psi
Low friction Buna-N seals	Temperature range -20°F to 200°F (-28 to 93°C)
Extend force at 100 psi = 90.0 lb.	Retract force at 100 psi = 82.3 lb.

Mount Style	Bracket	Nut
Front Nose Mount	FMB-6	FN-58-18
Rear Pivot Mount	FPBP-2	-
Double End Mount	Front	FMB-6
	Rear	FMB-6

Cylinder rod clevis FRC-516-24
See end of F-series section for Accessories

Dimensions inches [mm]





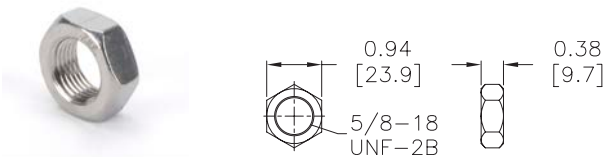
F-Series All Stainless Steel Pneumatic Cylinder Accessories

F-Series All Stainless Steel Pneumatic Cylinder Accessories				
Part Number	Description	Pcs/Pkg	Wt (lb)	Price
FN-58-18	Cylinder mounting nut with 5/8-18 UNF-2B threads, stainless steel, used to mount 3/4 and 1-1/16 inch bore NITRA F-series round body air cylinders	1	0.1	\$2.50
FN-34-16	Cylinder mounting nut with 3/4-16 UNF-2B threads, stainless steel, used to mount 1-1/2 inch bore NITRA F-series round body air cylinders	1	0.1	\$3.25
FN-114-12	Cylinder mounting nut with 1-1/4-12 UNF-2B threads, stainless steel, used to mount 2 inch bore NITRA F-series round body air cylinders	1	0.3	\$7.75
FMB-6	Cylinder mounting bracket, stainless steel, used to mount 3/4 and 1-1/16 inch bore NITRA F-series round body air cylinders	1	0.1	\$7.25
FMB-7	Cylinder mounting bracket, stainless steel, used to mount 1-1/2 inch bore NITRA F-series round body air cylinders	1	0.2	\$21.00
FMB-11	Cylinder mounting bracket, stainless steel, used to mount 2 inch bore NITRA F-series round body air cylinders	1	0.5	\$31.00
FPBP-2	Cylinder pivot mounting bracket with pivot pin, stainless steel, used to mount 3/4 and 1-1/16 inch bore NITRA F-series round body air cylinders	1	0.1	\$19.50
FPBP-3	Cylinder pivot mounting bracket with pivot pin, stainless steel, used to mount 1-1/2 inch bore NITRA F-series round body air cylinders	1	0.2	\$24.00
FPBP-4	Cylinder pivot mounting bracket with pivot pin, stainless steel, used to mount 2 inch bore NITRA F-series round body air cylinders	1	0.3	\$30.00
FRC-14-28	Cylinder rod clevis and hex nut, stainless steel, 1/4-28 thread, for use with 3/4 inch bore NITRA F-series round body air cylinders	1	0.1	\$24.50
FRC-516-24	Cylinder rod clevis and hex nut, stainless steel, 5/16-24 thread, for use with 1-1/16 inch bore NITRA F-series round body air cylinders	1	0.1	\$28.50
FRC-716-20	Cylinder rod clevis and hex nut, stainless steel, 7/16-20 thread, for use with 1-1/2 inch bore NITRA F-series round body air cylinders	1	0.2	\$35.00
FRC-12-20	Cylinder rod clevis and hex nut, stainless steel, 1/2-20 thread, for use with 2 inch bore NITRA F-series round body air cylinders	1	0.2	\$41.50

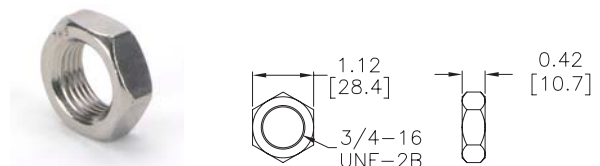
Dimensions

inches [mm]

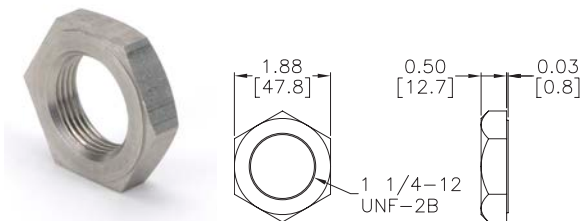
FN-58-18



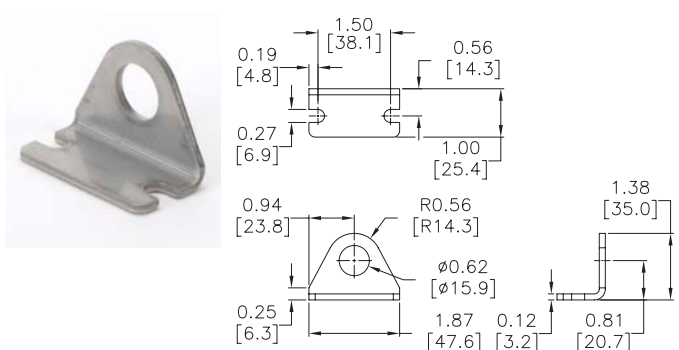
FN-34-16



FN-114-12



FMB-6



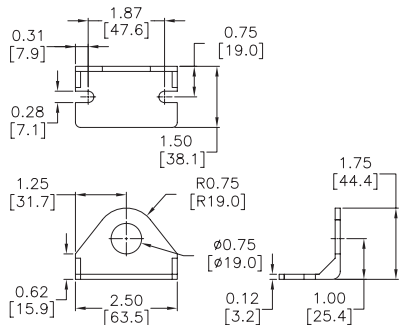


F-Series All Stainless Steel Pneumatic Cylinder Accessories

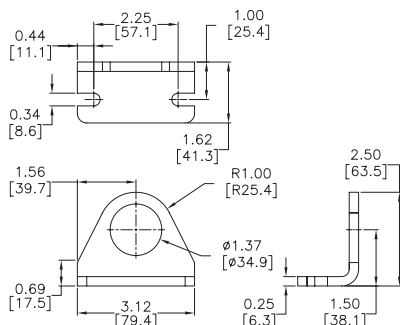
Dimensions

inches [mm]

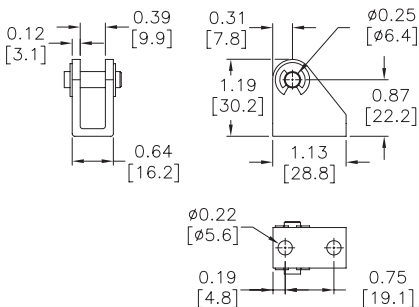
FMB-7



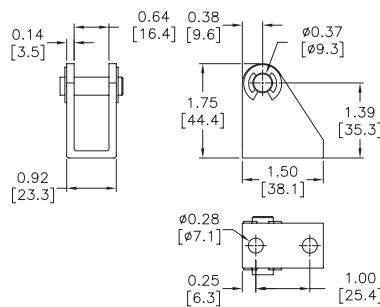
FMB-11



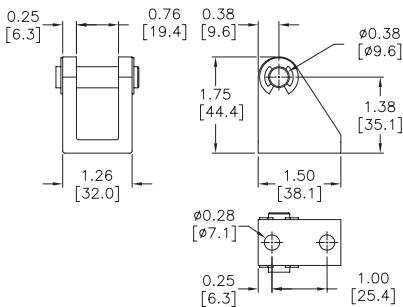
FPBP-2



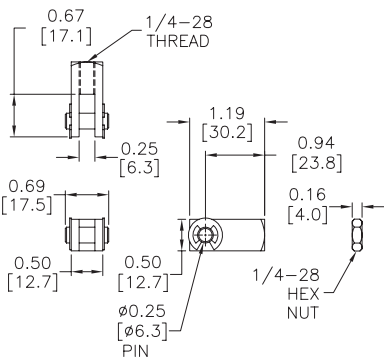
FPBP-3



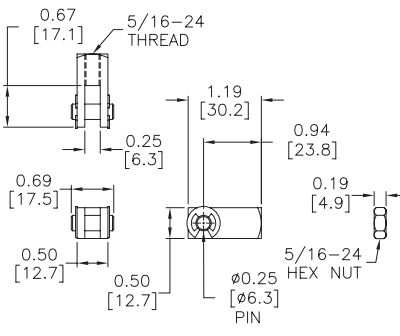
FPBP-4



FRC-14-28



FRC-516-24



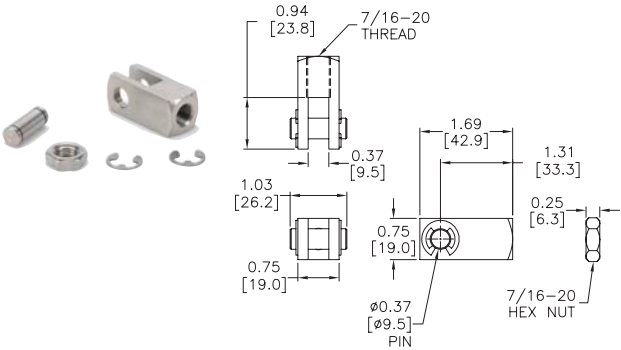


F-Series All Stainless Steel Pneumatic Cylinder Accessories

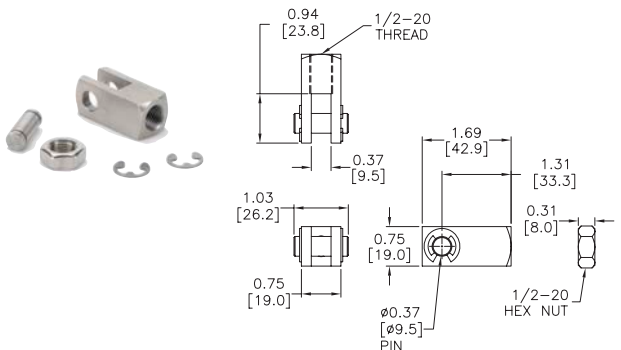
Dimensions

inches [mm]

FRC-716-20



FRC-12-20





CPS Series Cylinder Position Switches

Position Switch Cross Reference Chart			
NITRA Switch Type	Cylinder Brand (may fit some of these cylinders)	Photo Example	Groove Illustration
CPS CPSF	NITRA A-Series, D-Series, F-Series		
CPS9C	DE-STA-CO Robohand SMC Compact Air		
CPS9D	Fabco Numatics Rotomation		
CPS9F	NITRA G-Series Fabco Festo Numatics Rotomation		
CPS9H	NITRA E-Series NITRA H-Series		
CPS9M	Norgren		
CPS9Q	NITRA G-Series Parker		
CPS9T	SMC		