



# F-Series All Stainless Steel Pneumatic Cylinders - 1-1/2 inch Bore

## 1-1/2 in. Bore, Double-acting, Front Nose Mount



Part no. F24030DN

NITRA pneumatic stainless steel round body, interchangeable, non-repairable cylinder, 1-1/2 inch bore, 1/8 inch female NPT ports, double acting, front nose mount.

All Stainless Steel Cylinder 1-1/2 in. bore, double acting, front nose mount				
Part Number	Stroke Length (in.)	"A" (in.)	Weight (lbs)	Price
F24010DN	1.0	4.69	1.2	\$92.00
F24015DN	1.5	5.19	1.2	\$93.00
F24020DN	2.0	5.69	1.4	\$94.00
F24030DN	3.0	6.69	1.4	\$97.00
F24040DN	4.0	7.69	1.5	\$99.00
F24050DN	5.0	8.69	1.6	\$102.00
F24060DN	6.0	9.69	1.8	\$105.00
F24080DN	8.0	11.69	2.0	\$105.00
F24100DN	10.0	13.69	2.3	\$113.00
F24120DN	12.0	15.69	2.5	\$119.00

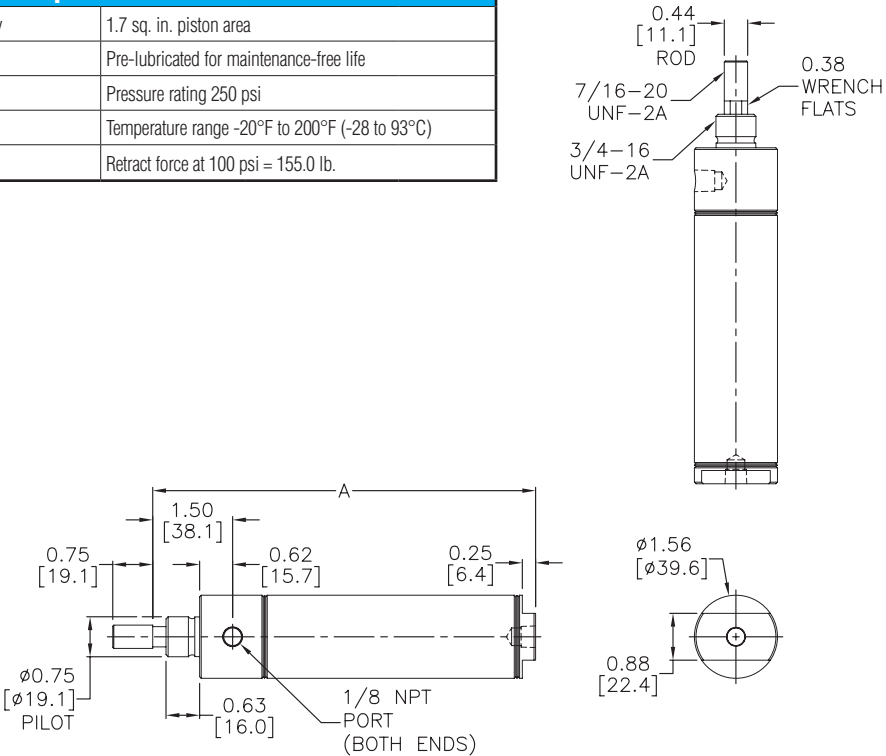
Specifications	
300 series stainless steel cylinder body	1.7 sq. in. piston area
300 series stainless steel end caps	Pre-lubricated for maintenance-free life
300 series stainless steel piston rod	Pressure rating 250 psi
Low friction Buna-N seals	Temperature range -20°F to 200°F (-28 to 93°C)
Extend force at 100 psi = 170.0 lb.	Retract force at 100 psi = 155.0 lb.

Mount Style	Bracket	Nut
Front Nose Mount	FMB-7	FN-34-16
Rear Pivot Mount	-	-
Double End Mount	Front	-
	Rear	-

Cylinder rod clevis FRC-716-20  
See end of F-series section for Accessories

### Dimensions

inches [mm]





# F-Series All Stainless Steel Pneumatic Cylinders - 1-1/2 inch Bore

## 1-1/2 in. Bore, Double-acting, Double End Mount



Part no. F24030DD

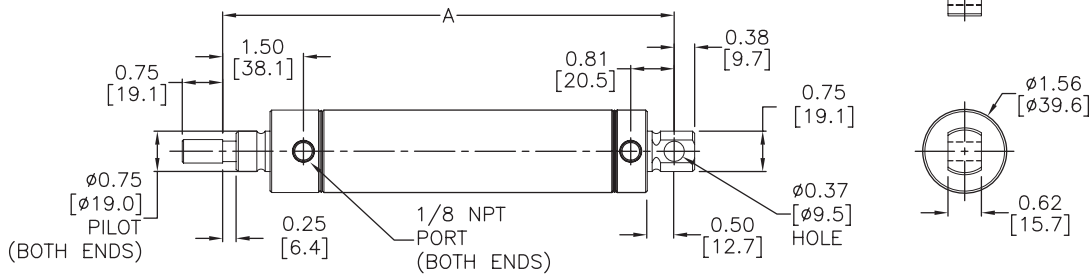
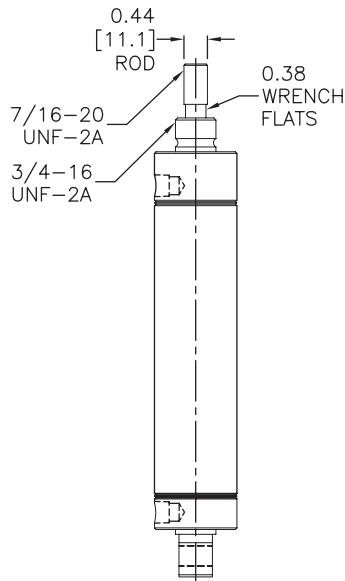
NITRA pneumatic stainless steel round body, interchangeable, non-repairable cylinder, 1-1/2 inch bore, 1/8 inch female NPT ports, double acting, double end mount.

All Stainless Steel Cylinder 1-1/2 in. bore, double acting, double end mount				
Part Number	Stroke Length (in.)	"A" (in.)	Weight (lbs)	Price
F24010DD	1.0	5.38	1.2	\$106.00
F24020DD	2.0	6.38	1.4	\$108.00
F24030DD	3.0	7.38	1.5	\$110.00
F24040DD	4.0	8.38	1.7	\$112.00
F24050DD	5.0	9.38	1.7	\$115.00
F24060DD	6.0	10.38	1.8	\$119.00
F24080DD	8.0	12.38	2.1	\$124.00
F24100DD	10.0	14.38	2.3	\$129.00
F24120DD	12.0	16.38	2.6	\$133.00

Specifications	
300 series stainless steel cylinder body	1.7 sq. in. piston area
300 series stainless steel end caps	Pre-lubricated for maintenance-free life
300 series stainless steel piston rod	Pressure rating 250 psi
Low friction Buna-N seals	Temperature range -20°F to 200°F (-28 to 93°C)
Extend force at 100 psi = 170.0 lb.	Retract force at 100 psi = 155.0 lb.

Mount Style	Bracket	Nut
Front Nose Mount	FMB-7	FN-34-16
Rear Pivot Mount	FPBP-3	-
Double End Mount	Front	FMB-7 FN-34-16
	Rear	FMB-7 FN-34-16

Cylinder rod clevis FRC-716-20  
See end of F-series section for Accessories





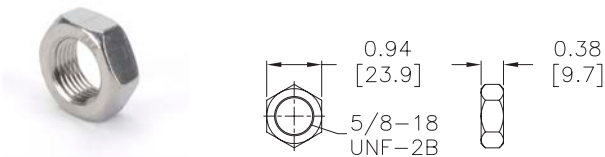
# F-Series All Stainless Steel Pneumatic Cylinder Accessories

F-Series All Stainless Steel Pneumatic Cylinder Accessories				
Part Number	Description	Pcs/Pkg	Wt (lb)	Price
<b>FN-58-18</b>	Cylinder mounting nut with 5/8-18 UNF-2B threads, stainless steel, used to mount 3/4 and 1-1/16 inch bore NITRA F-series round body air cylinders	1	0.1	\$2.50
<b>FN-34-16</b>	Cylinder mounting nut with 3/4-16 UNF-2B threads, stainless steel, used to mount 1-1/2 inch bore NITRA F-series round body air cylinders	1	0.1	\$3.25
<b>FN-114-12</b>	Cylinder mounting nut with 1-1/4-12 UNF-2B threads, stainless steel, used to mount 2 inch bore NITRA F-series round body air cylinders	1	0.3	\$7.75
<b>FMB-6</b>	Cylinder mounting bracket, stainless steel, used to mount 3/4 and 1-1/16 inch bore NITRA F-series round body air cylinders	1	0.1	\$7.25
<b>FMB-7</b>	Cylinder mounting bracket, stainless steel, used to mount 1-1/2 inch bore NITRA F-series round body air cylinders	1	0.2	\$21.00
<b>FMB-11</b>	Cylinder mounting bracket, stainless steel, used to mount 2 inch bore NITRA F-series round body air cylinders	1	0.5	\$31.00
<b>FPBP-2</b>	Cylinder pivot mounting bracket with pivot pin, stainless steel, used to mount 3/4 and 1-1/16 inch bore NITRA F-series round body air cylinders	1	0.1	\$19.50
<b>FPBP-3</b>	Cylinder pivot mounting bracket with pivot pin, stainless steel, used to mount 1-1/2 inch bore NITRA F-series round body air cylinders	1	0.2	\$24.00
<b>FPBP-4</b>	Cylinder pivot mounting bracket with pivot pin, stainless steel, used to mount 2 inch bore NITRA F-series round body air cylinders	1	0.3	\$30.00
<b>FRC-14-28</b>	Cylinder rod clevis and hex nut, stainless steel, 1/4-28 thread, for use with 3/4 inch bore NITRA F-series round body air cylinders	1	0.1	\$24.50
<b>FRC-516-24</b>	Cylinder rod clevis and hex nut, stainless steel, 5/16-24 thread, for use with 1-1/16 inch bore NITRA F-series round body air cylinders	1	0.1	\$28.50
<b>FRC-716-20</b>	Cylinder rod clevis and hex nut, stainless steel, 7/16-20 thread, for use with 1-1/2 inch bore NITRA F-series round body air cylinders	1	0.2	\$35.00
<b>FRC-12-20</b>	Cylinder rod clevis and hex nut, stainless steel, 1/2-20 thread, for use with 2 inch bore NITRA F-series round body air cylinders	1	0.2	\$41.50

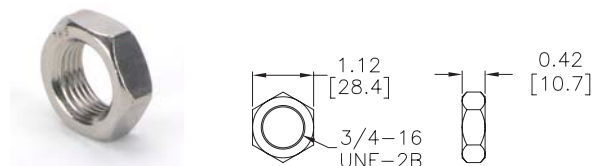
## Dimensions

inches [mm]

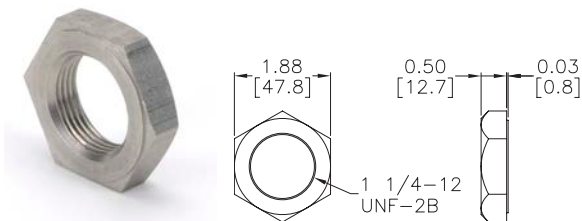
### FN-58-18



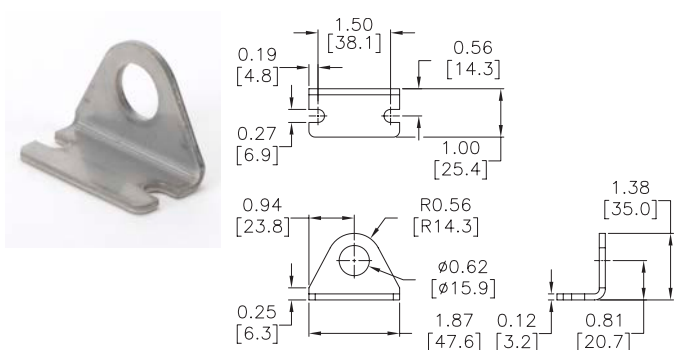
### FN-34-16



### FN-114-12



### FMB-6



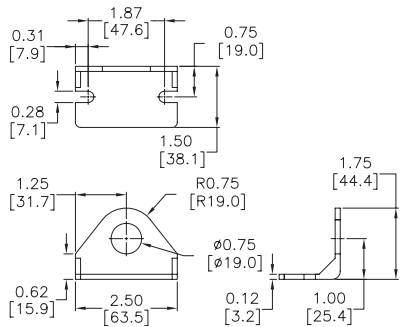


# F-Series All Stainless Steel Pneumatic Cylinder Accessories

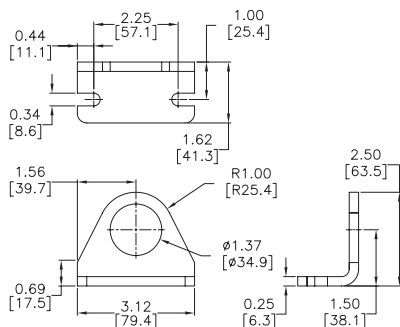
## Dimensions

inches [mm]

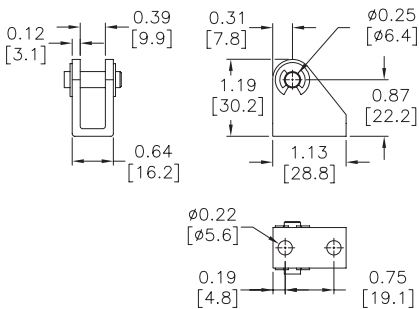
### FMB-7



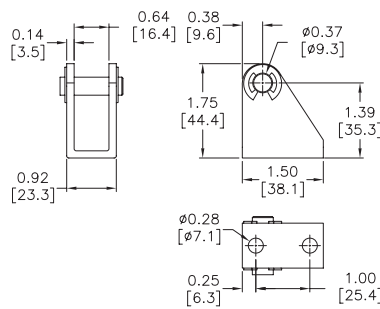
### FMB-11



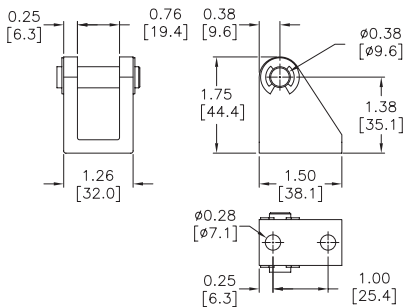
### FPBP-2



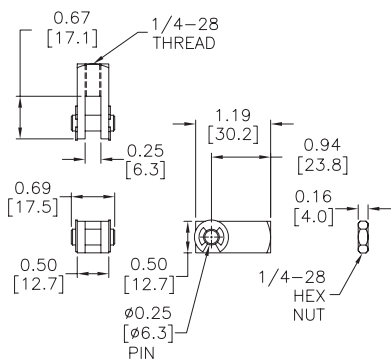
### FPBP-3



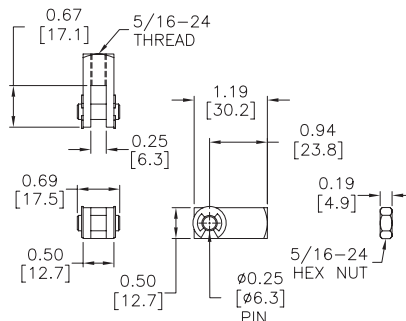
### FPBP-4



### FRC-14-28



### FRC-516-24



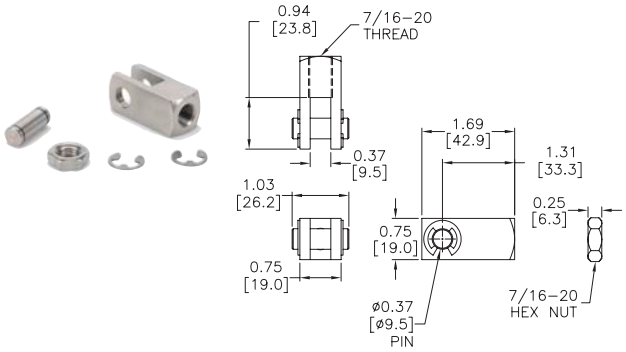


# F-Series All Stainless Steel Pneumatic Cylinder Accessories

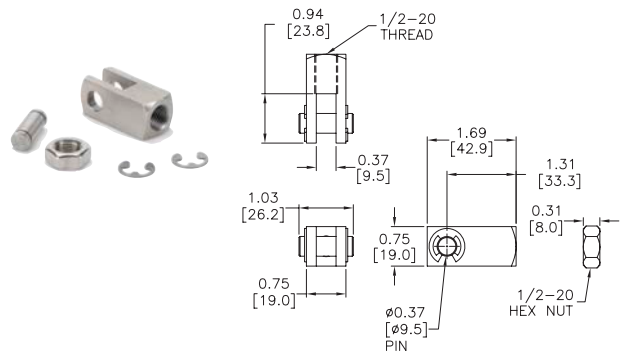
## Dimensions

inches [mm]

### FRC-716-20




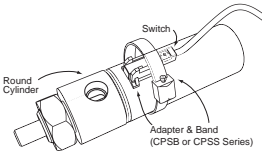
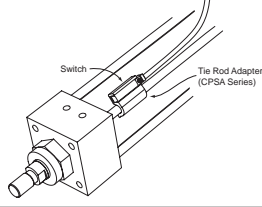

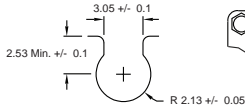
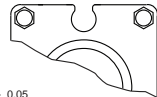

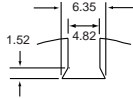
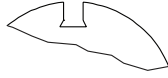

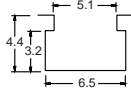
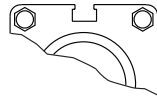

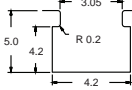
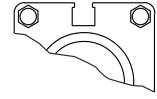

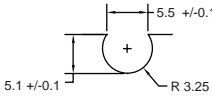


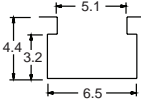
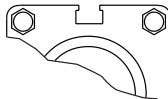
### FRC-12-20





# CPS Series Cylinder Position Switches

**Position Switch Cross Reference Chart**

NITRA Switch Type	Cylinder Brand (may fit some of these cylinders)	Photo Example	Groove Illustration	
<p><b>CPS</b> <b>CPSF</b></p>	<p>NITRA A-Series, D-Series, F-Series</p>			
<p><b>CPS9C</b></p>	<p>DE-STA-CO Robohand SMC Compact Air</p>			
<p><b>CPS9D</b></p>	<p>Fabco Numatics Rotomation</p>			
<p><b>CPS9F</b></p>	<p>NITRA G-Series Fabco Festo Numatics Rotomation</p>			
<p><b>CPS9H</b></p>	<p>NITRA E-Series NITRA H-Series</p>			
<p><b>CPS9M</b></p>	<p>Norgren</p>			
<p><b>CPS9Q</b></p>	<p>NITRA G-Series Parker</p>			
<p><b>CPS9T</b></p>	<p>SMC</p>	